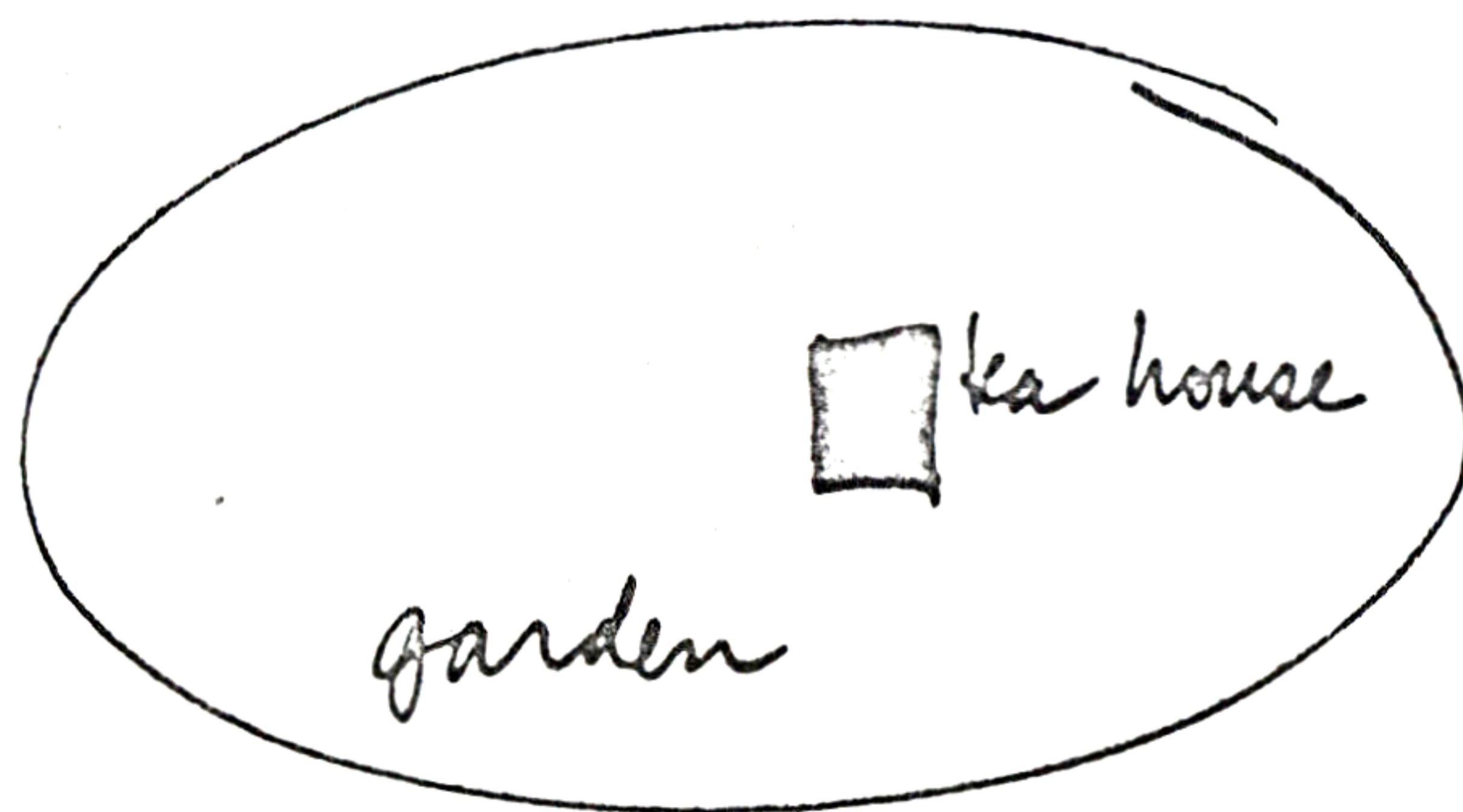


1

SECLUDED TEA HOUSE

The tea house is in a quiet garden.

SECLUDED TEA HOUSE

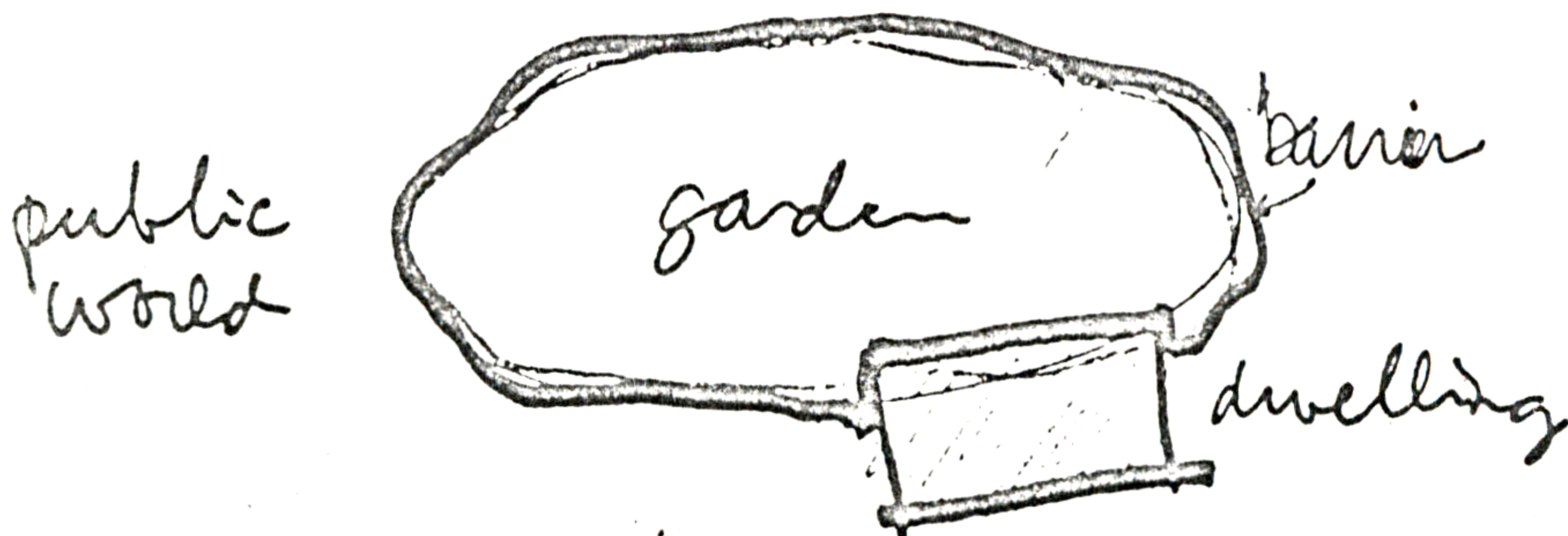


~~tea~~ tea house definition

GARDEN BARRIER

Some kind of barrier surrounds the entire garden: from inside the garden the public world is not visible, and hardly audible. If there is a family dwelling associated with the tea house, the dwelling may act as part of the barrier.

GARDEN BARRIER



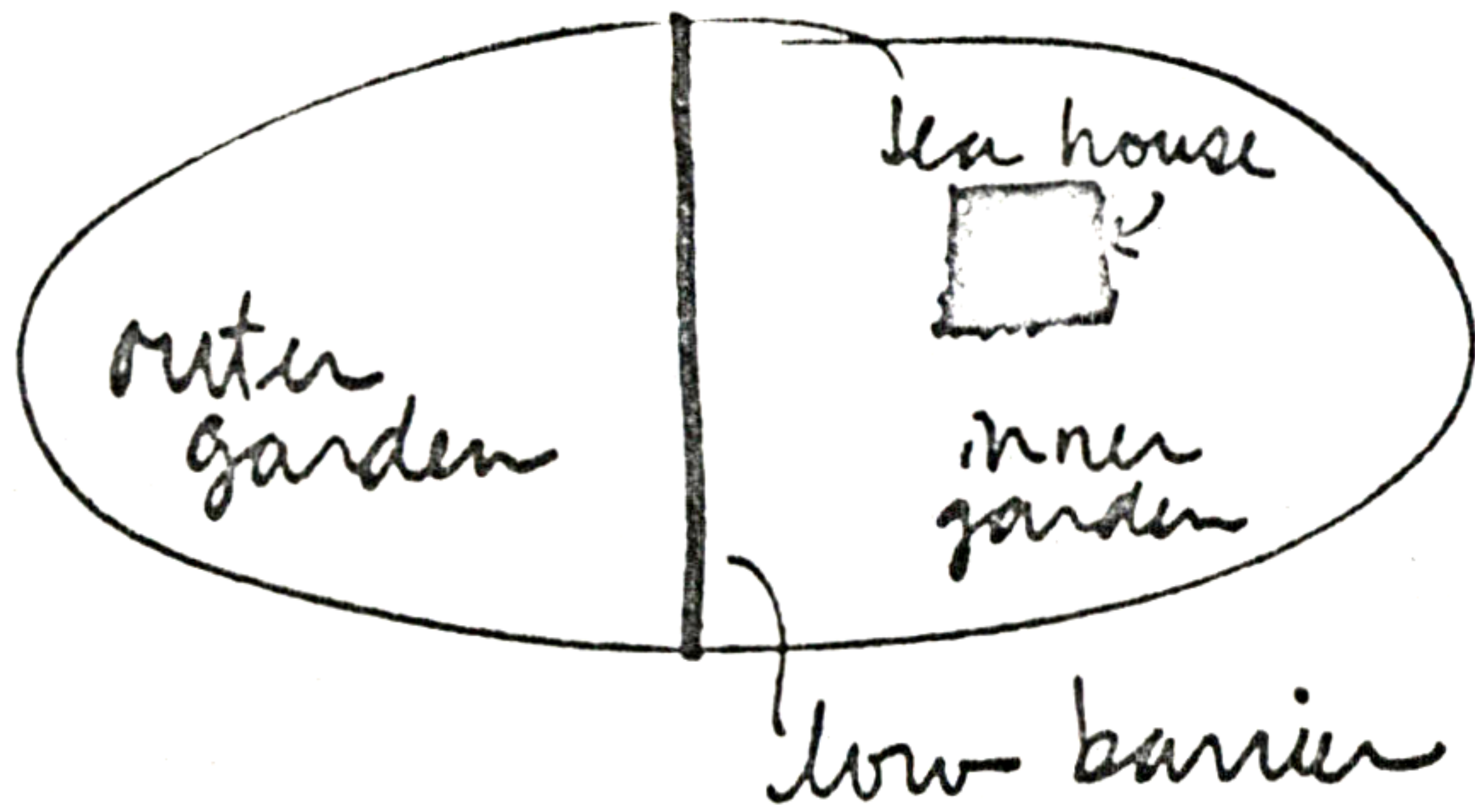
Secluded garden

3

INNER & OUTER GARDEN

A low barrier divides the garden into 2 parts: the inner garden and the outer garden. The tea house is in the inner garden.

INNER & OUTER GARDEN

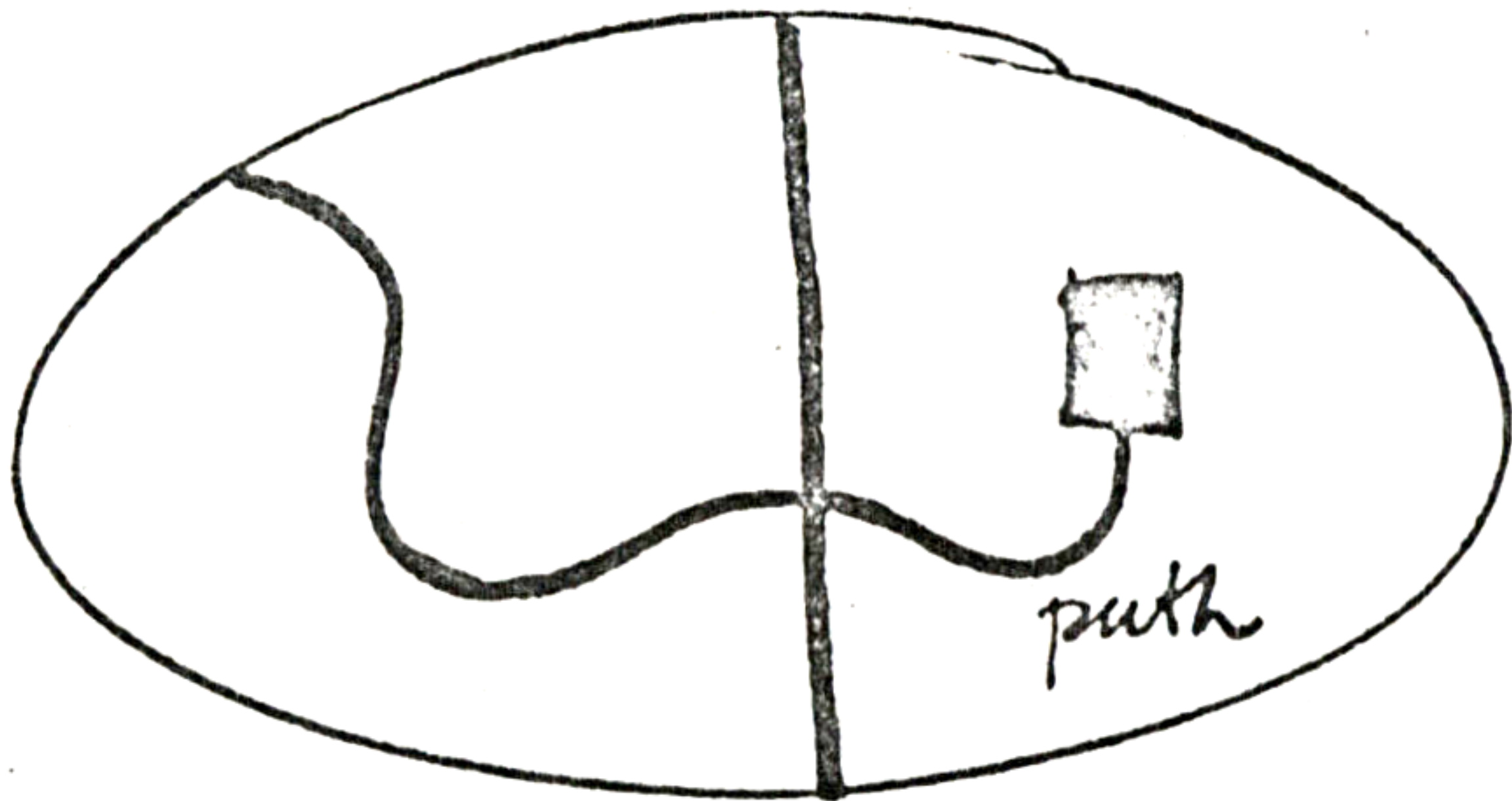


Secret Garden

GARDEN PATH

There is a slightly meandering garden path running through the outer garden, past the low barrier, and through the inner garden to the tea house.

GARDEN PATH



inner outer garden

5

STONE PATH

The meandering garden path is composed of mossy stepping stones, and is loosely bordered by trees and bushes.

STONE PATH



Stepping stones

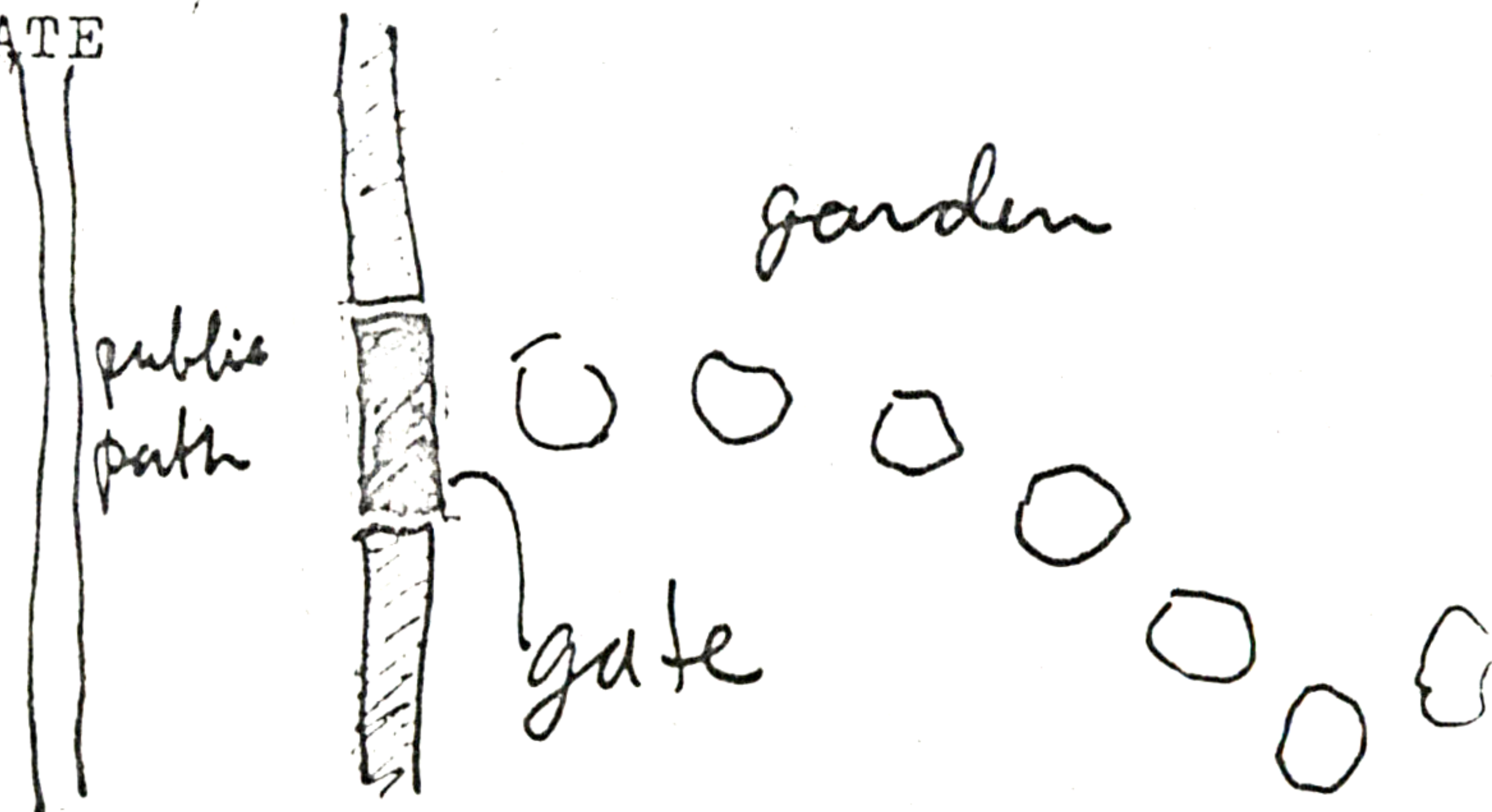
Garden Path

6

OUTER GATE

Where the garden path meets the edge of the outer garden there is a gate, connecting the outer garden path to a public walk. The gate is opaque; there are no direct views into the outer garden from the public path.

OUTER GATE



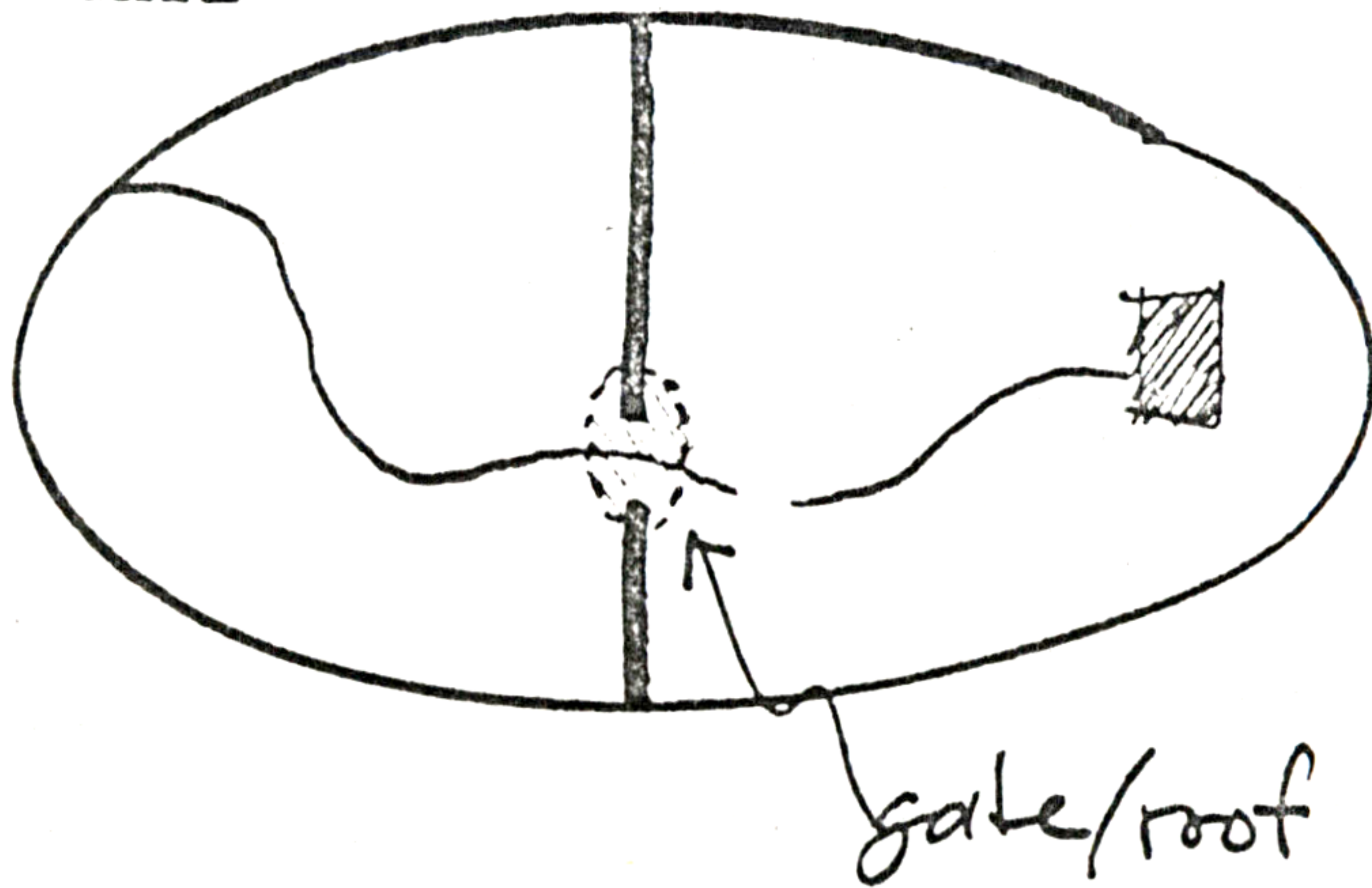
Garden Barrier
Garden Path
Inner outer garden

67

MIDDLE GATE

Where the garden path crosses the low barrier, between the inner garden and the outer garden, there is a gate, called the middle gate. The middle gate is small with a roof or a low door on hinges.

MIDDLE GATE



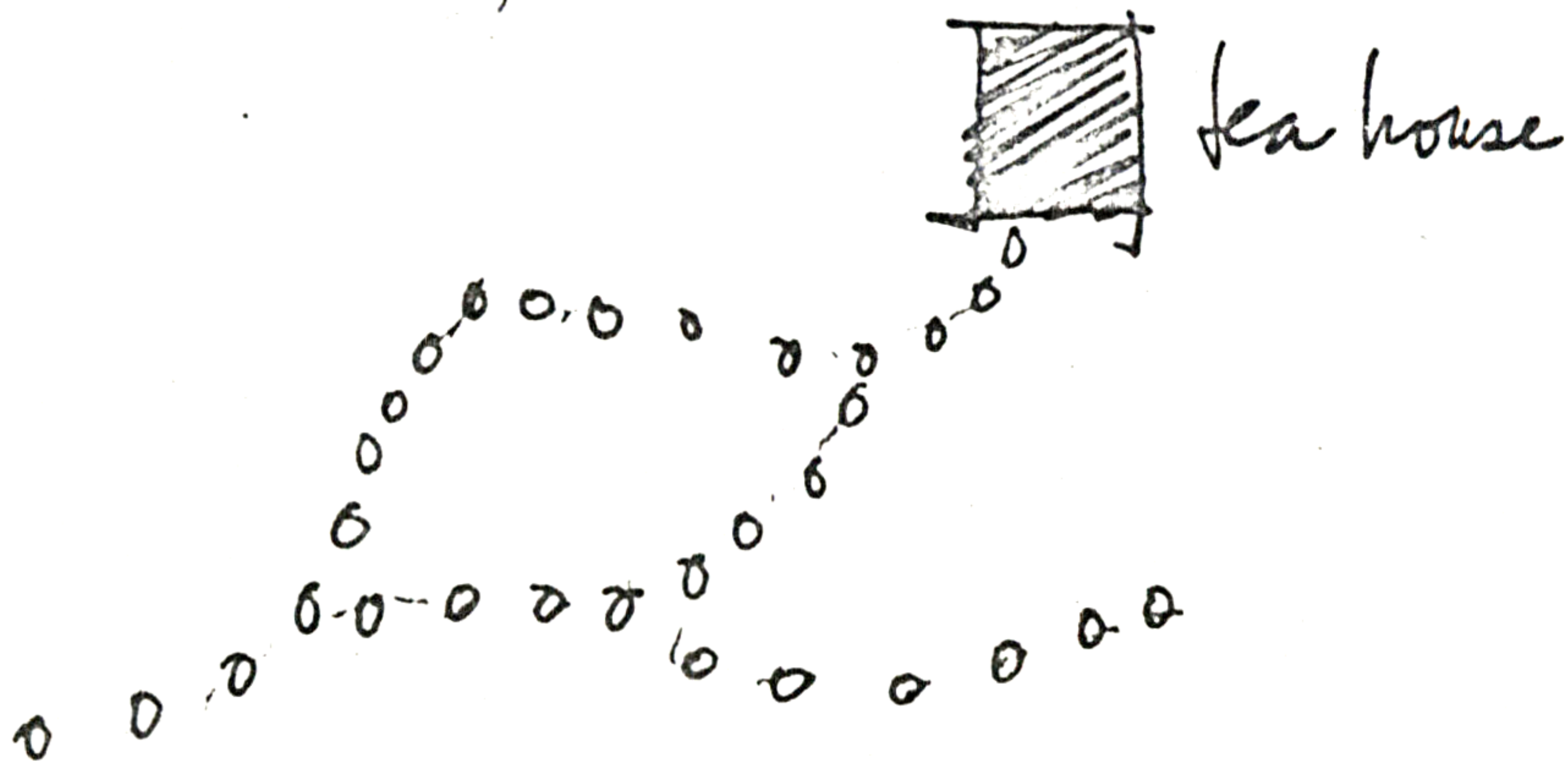
~~the~~ inner gate
Garden path

BRANCHING PATHS

In the outer garden,
The garden path may branch in several places along its length; any given branching path may or may not lead eventually to the tea house.

~~8~~
8

BRANCHING PATHS

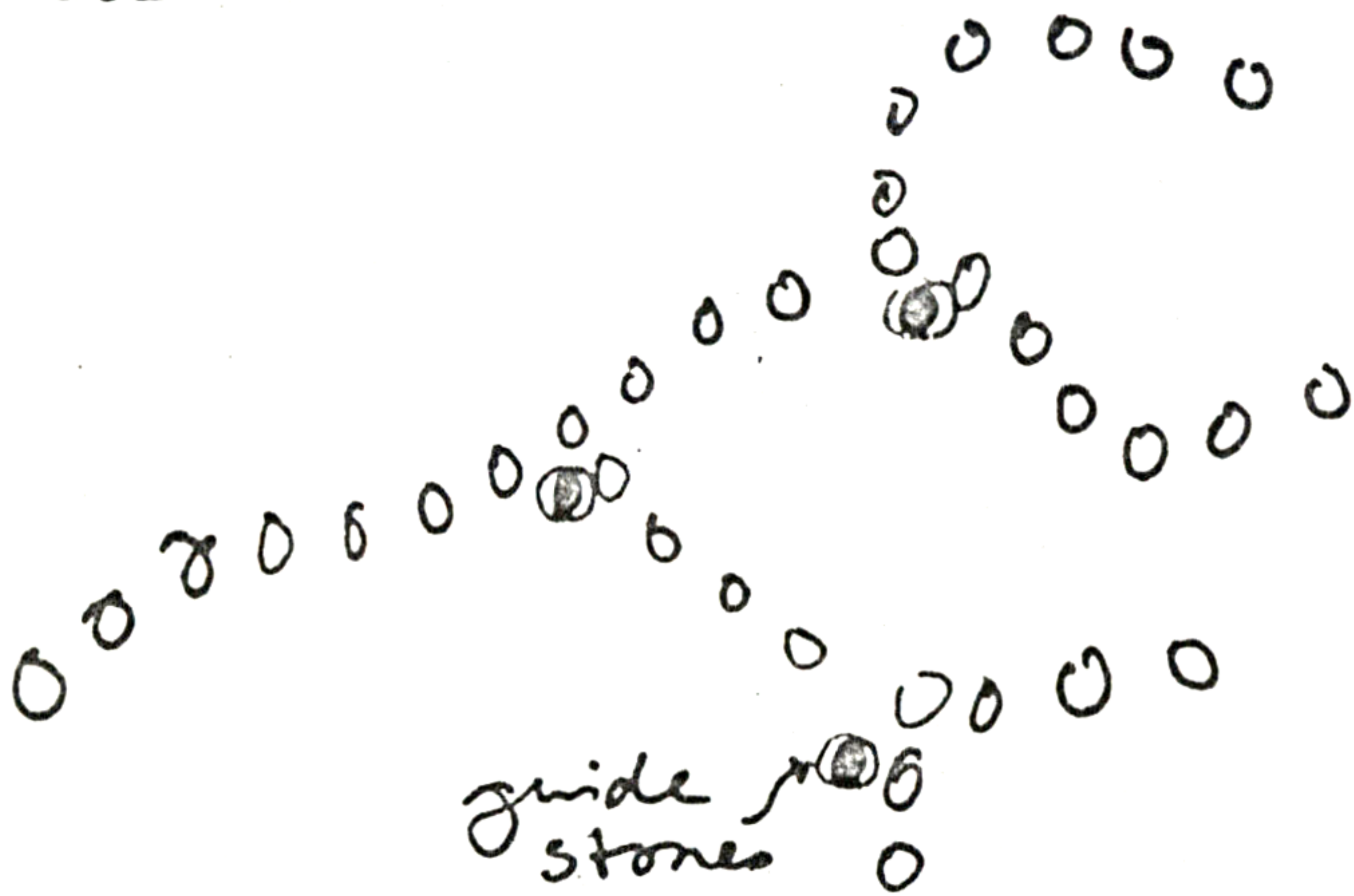


Ten Hara / Secluded Garden
Garden Path

GUIDE STONES

The garden path may branch in several directions; where the path branches there are guide stones set near the stepping stones. The host closes off a route by placing the guide stone at the branching point, on the ~~same~~ stepping stone. On a given day there is only one open path through the garden to the tea house.

GUIDE STONES



Branching paths

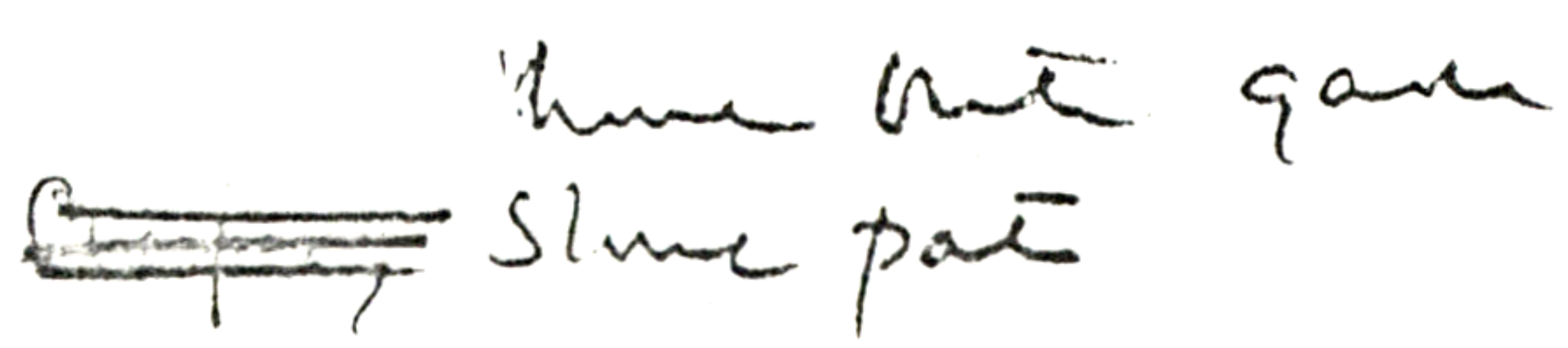
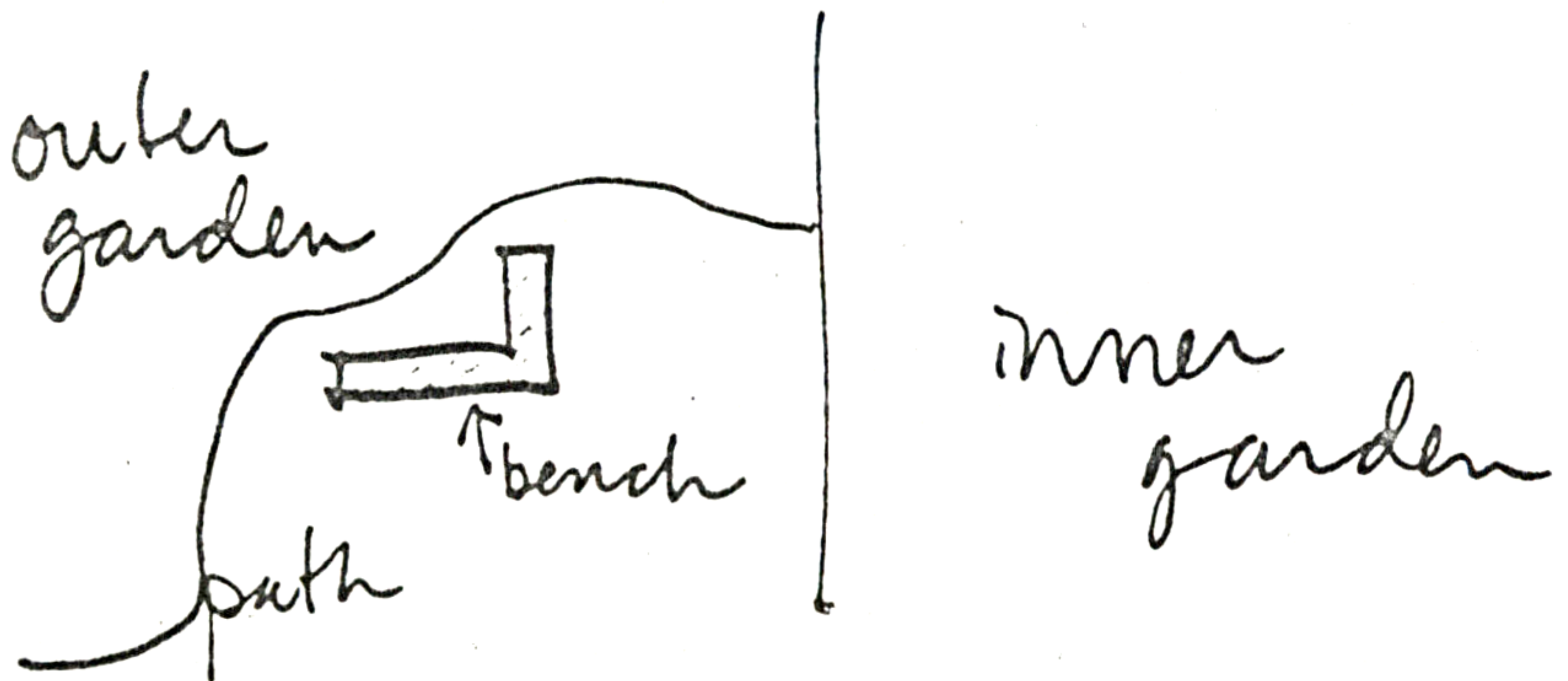
~~7~~ 10

WAITING BENCH

Along the stone path in the outer garden there is a waiting bench. The bench is roughly 7' long ~~and~~ and may be covered.

near the middle gate,

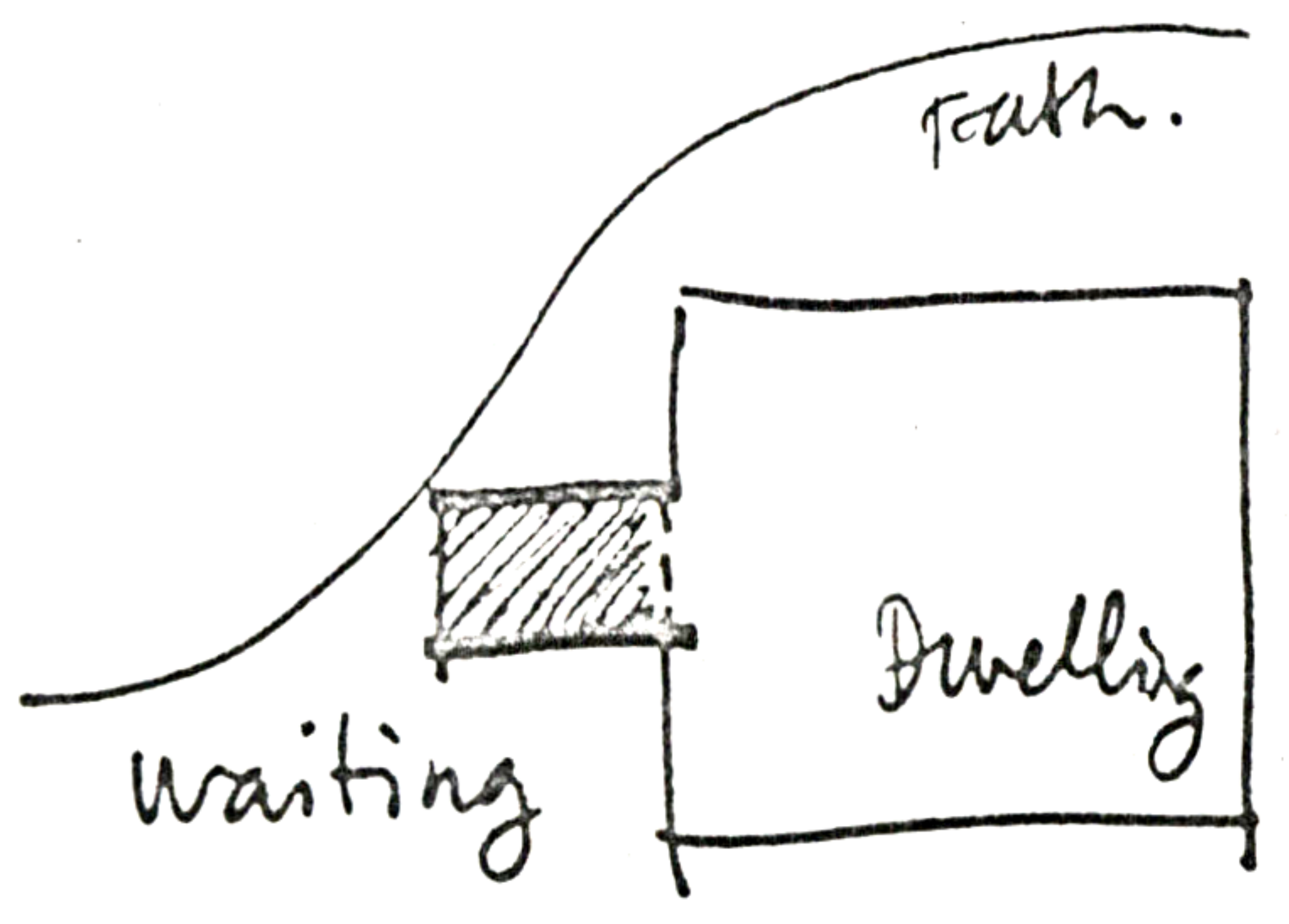
WAITING BENCH



WAITING NEAR HOUSE

If there is a family dwelling associated with the tea house, then the waiting bench area is near the dwelling and may be accessed from the dwelling; in fact, ~~the~~ the waiting area may be connected to the dwelling's physical structure.

WAITING NEAR HOUSE



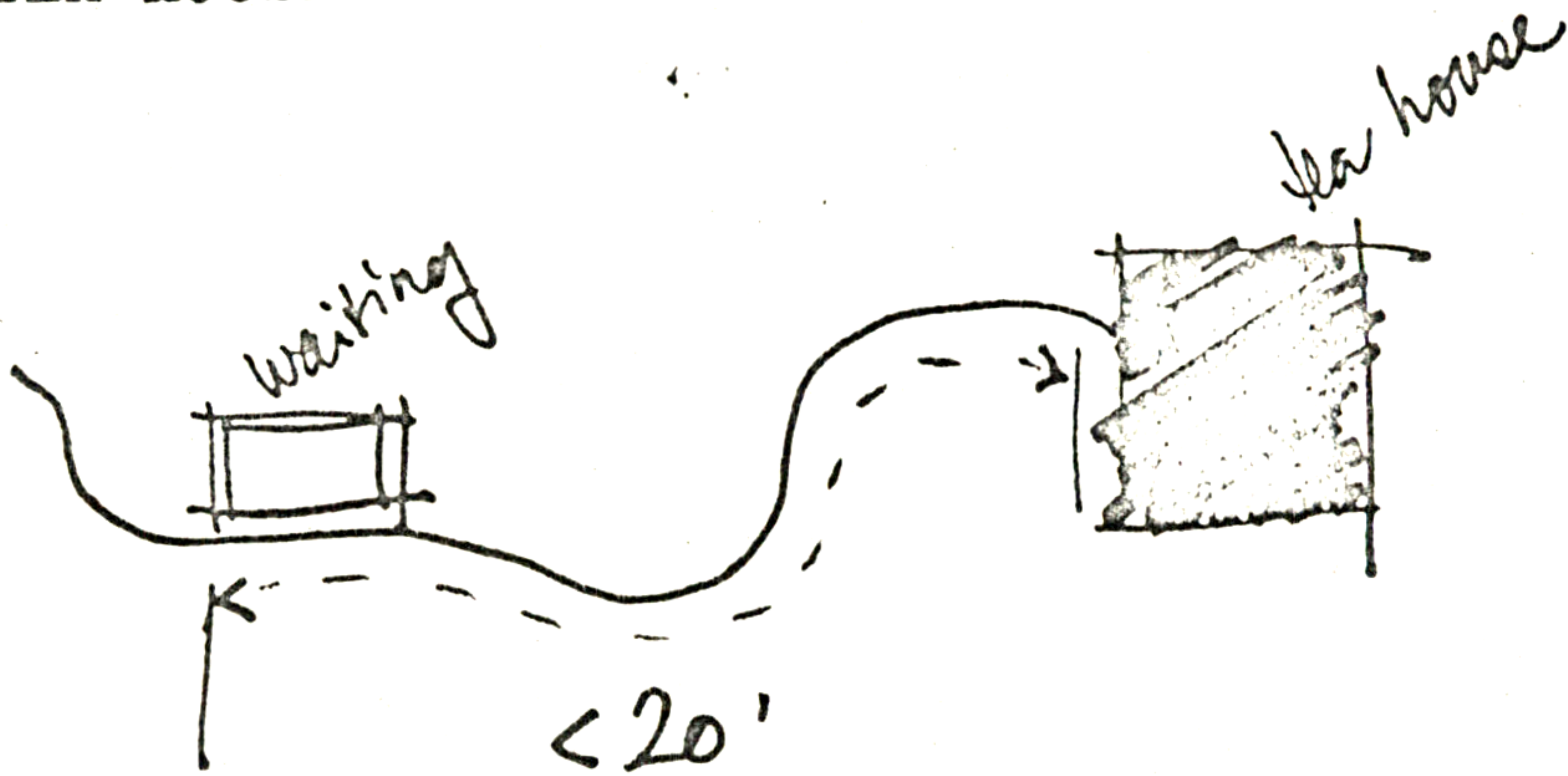
Goodman
Wally Belmont

TEA-HOUSE APPROACH

From the waiting bench to the tea house the garden path is never longer than 20'.

The length of the path from the waiting bench to the tea house is never more than 20'

TEA HOUSE APPROACH



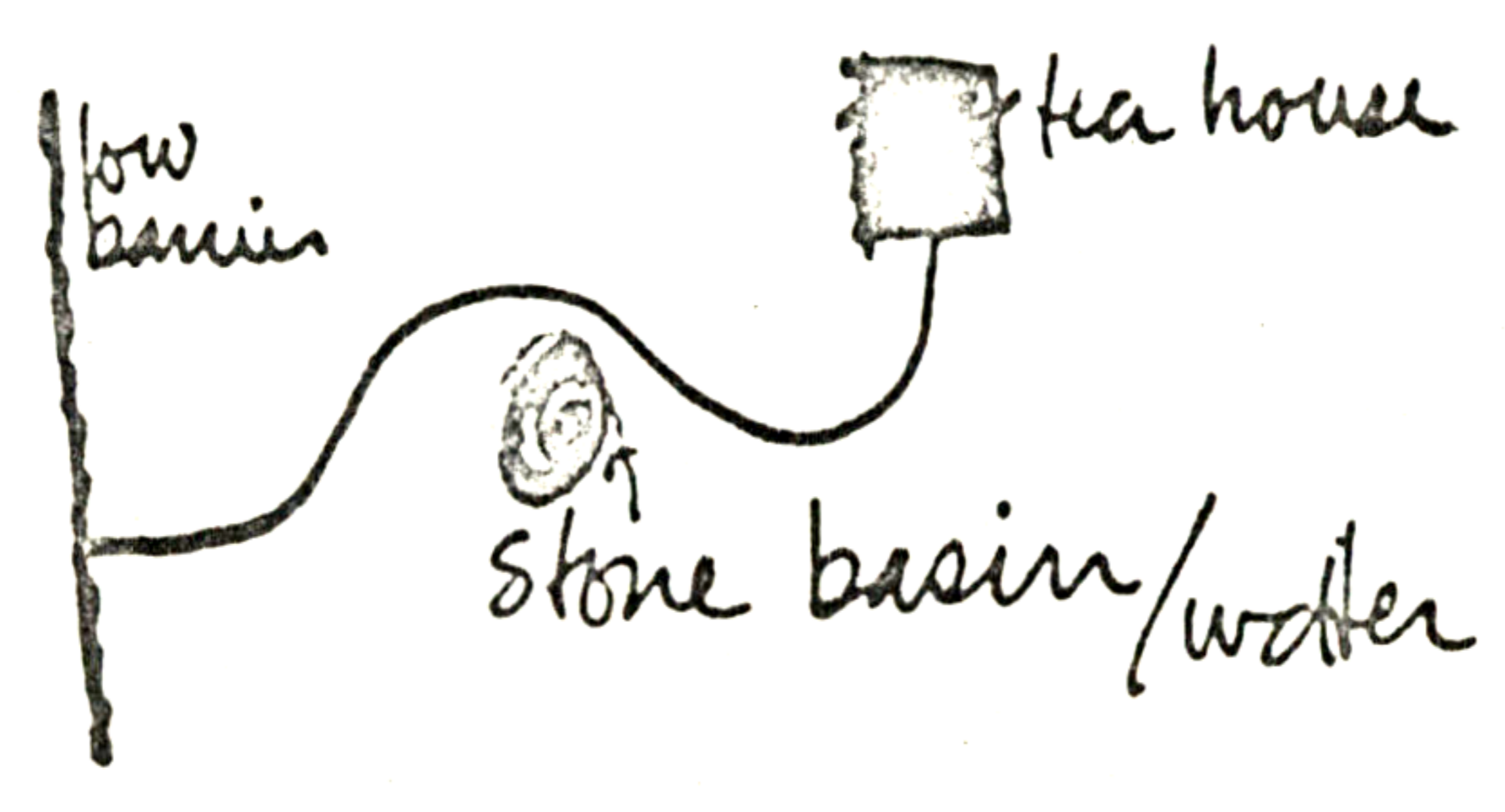
Middle gate
Garden path

13

STONE WATER BASIN

Somewhere along the path through the inner garden, between the low barrier and the tea house, there is a stone water basin and running water.

STONE WATER BASIN

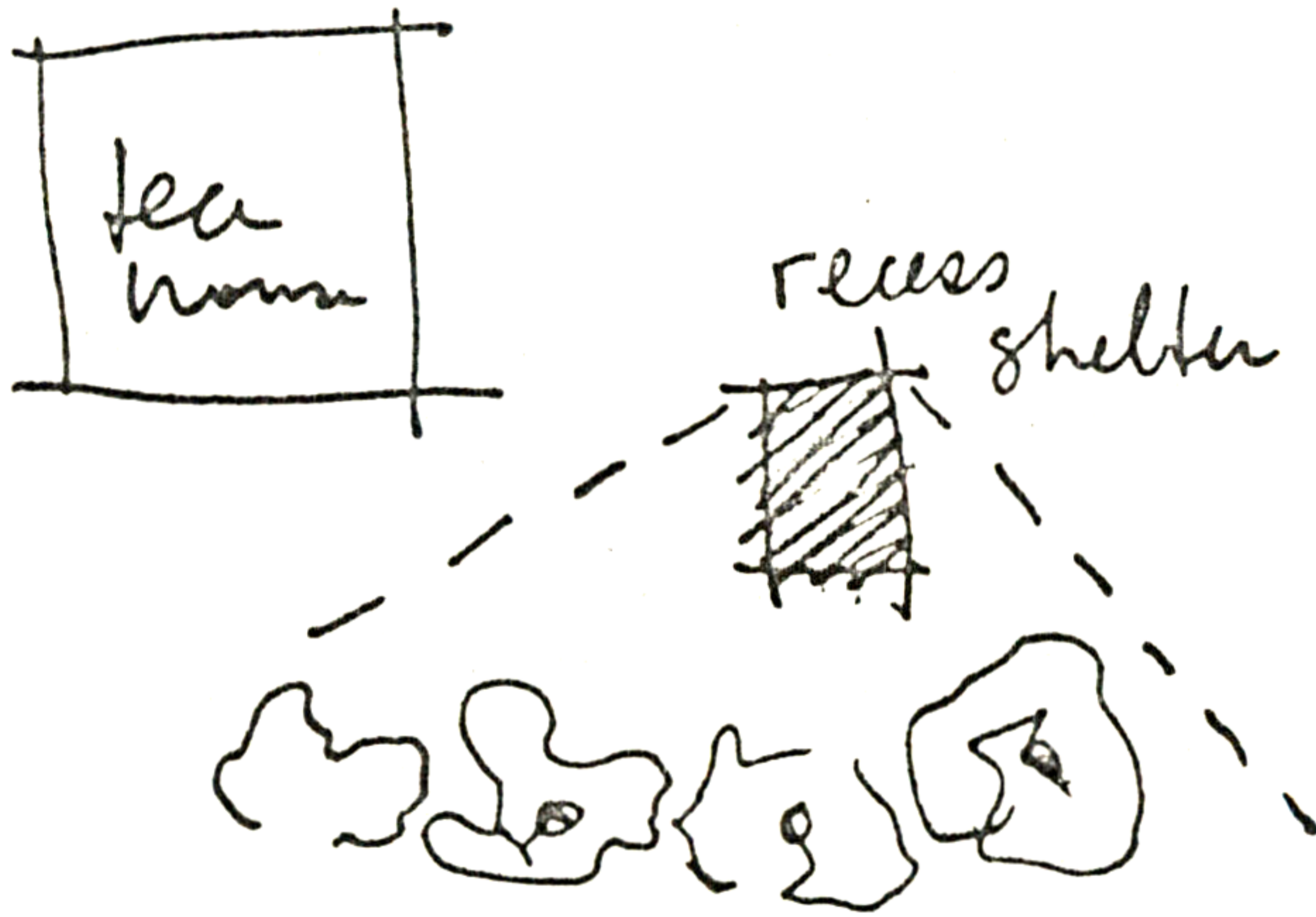


Some Path
Inner Outer Garden
Stone

RECESS SHELTER

If the tea house is to accommodate long "meal" sessions, then there is a covered bench a few steps away from the tea house, where people can sit and view the garden.

RECESS SHELTER



view onto garden
Tea House Approach
Tea House

~~10~~ 15

KNEELING-IN ENTRANCE

Where the stone path meets the tea house there is a window-like entrance - a small opening in the face of the tea house. The entrance is roughly 2' high and 2' wide, and 2' above the path: thus a man entering must stoop down and kneel in.

KNEELING-IN
ENTRANCE



Stone Path

Tea House approach

Tea House 3 parts

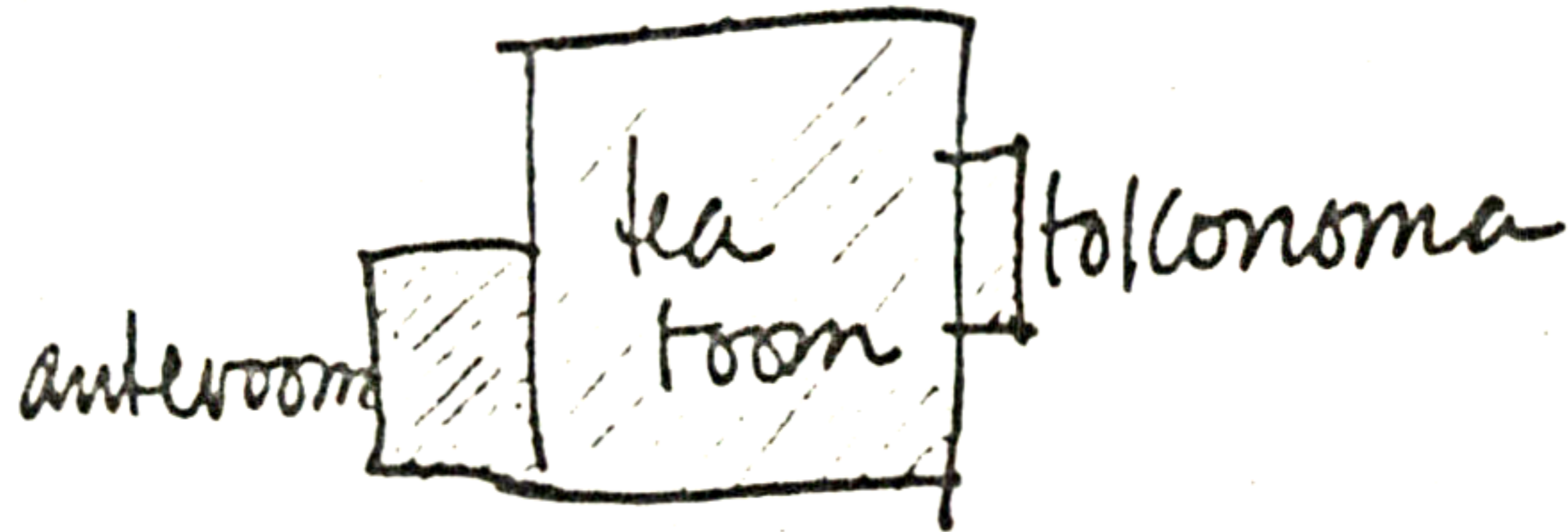
TEA HOUSE HAS THREE PARTS

The tea house is made up of three parts, in plan: the tea-room proper, an anteroom, & the tokonoma.

The tea-room is the largest part - it is where the guests gather and the tea ritual occurs. The anteroom is a tiny area off the tea-room where equipment is kept and some preparation is made. The tokonoma is a shallow alcove off the tea-room where art objects are displayed.

16

TEA HOUSE HAS THREE PARTS



example configuration

Tea House Def.

SIZE OF THE TEA HOUSE

The floor-area of the tea house ^{room} is limited to four sizes: the 1.5 mat, the 2 mat, the 3 mat, and the 4.5 mat. (The unit size of one mat is roughly 6' x 3'.)

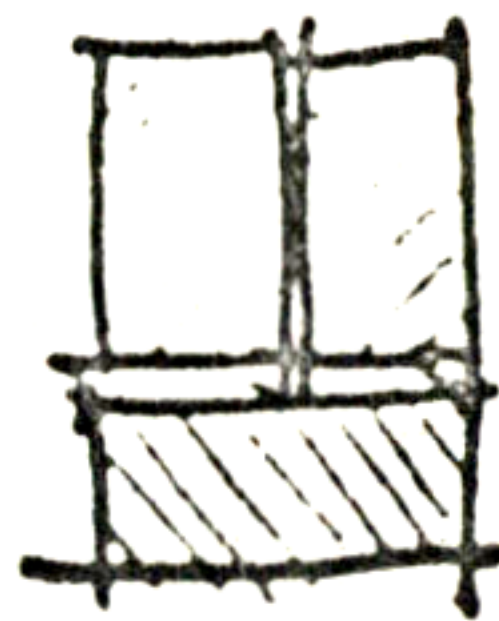
SIZE OF THE TEA HOUSE



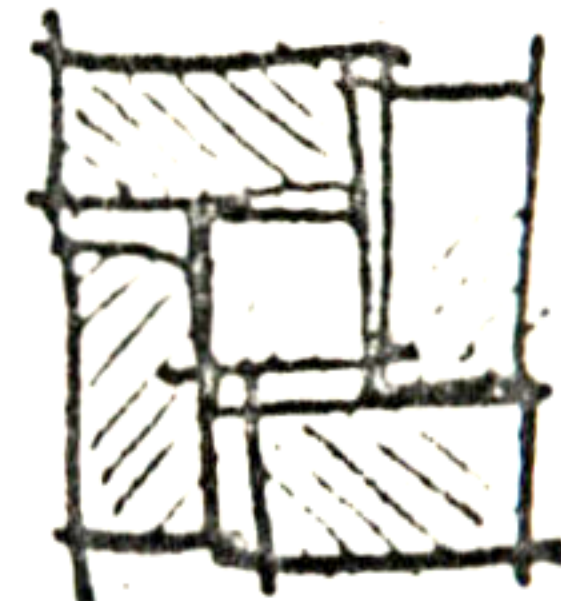
1.5



2



3



4.5

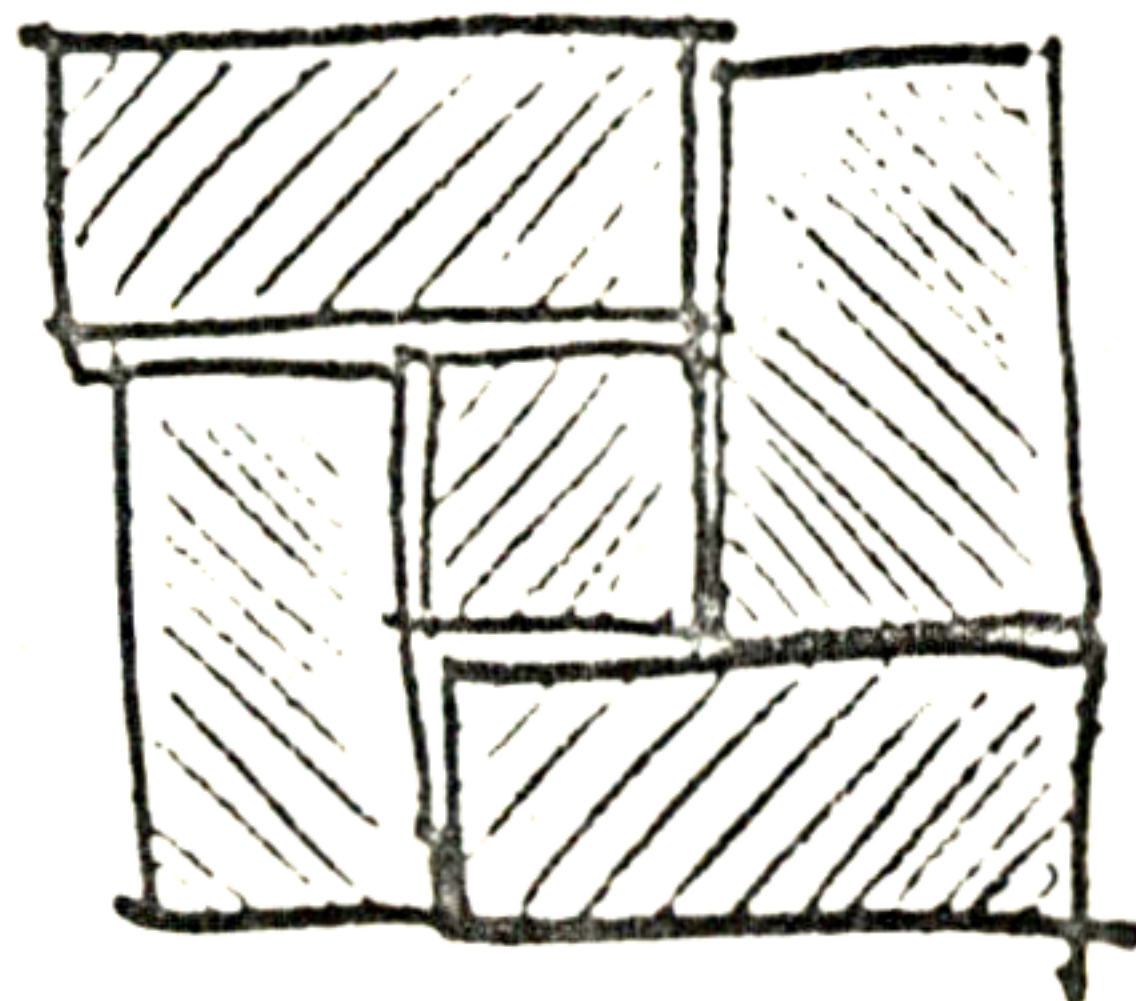
typical configurations

Tea house 3 parts

4½ MAT CONFIGURATION

In the 4½ mat tea house, the ½ mat is placed in the center and the 4 mats laid evenly around it.

4½ MAT CONFIGURATION

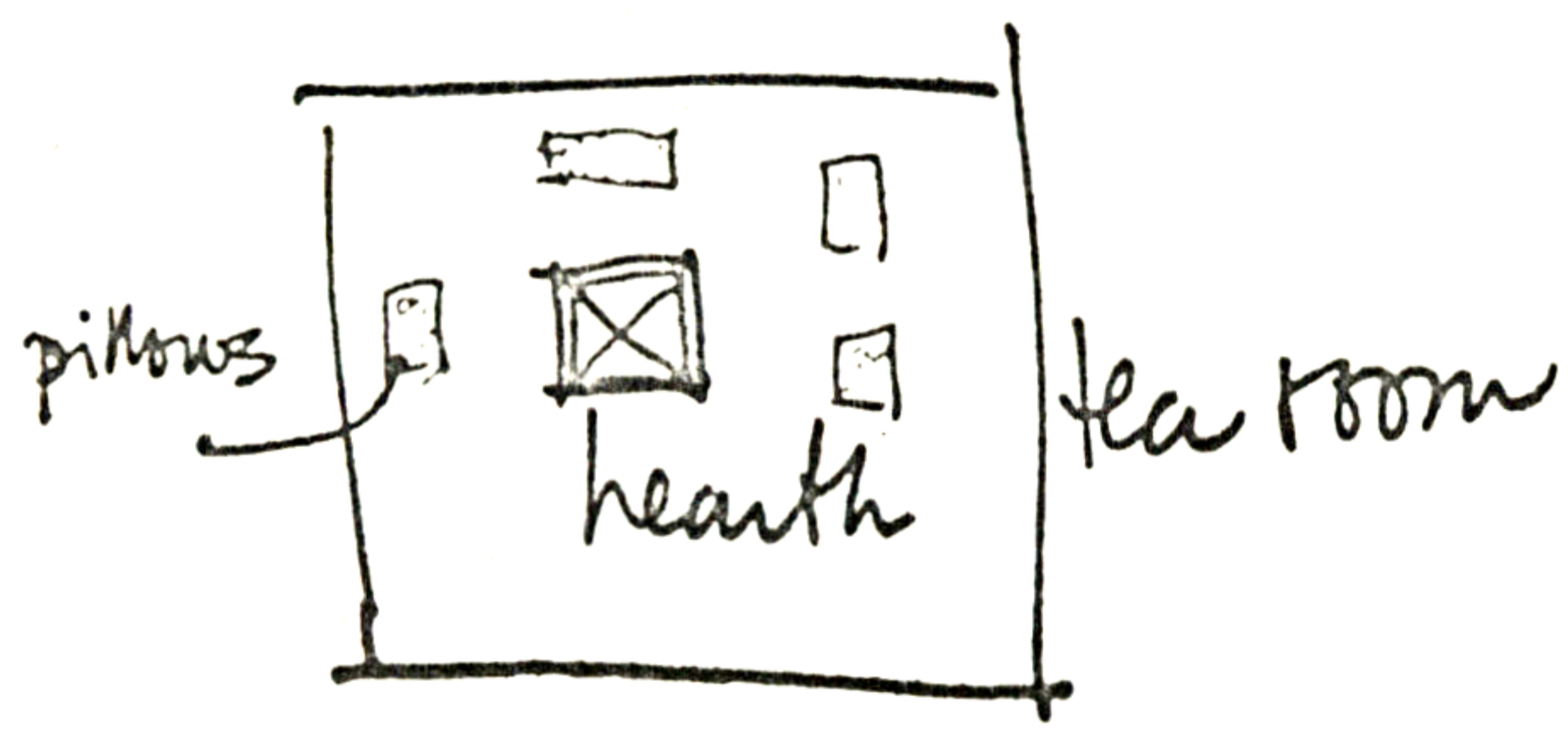


Ten Han Sire

CENTRAL HEARTH

A small square hearth is fitted into the floor at approximately the center of the tea room. Guests sit on pillows around the hearth.

CENTRAL HEARTH.

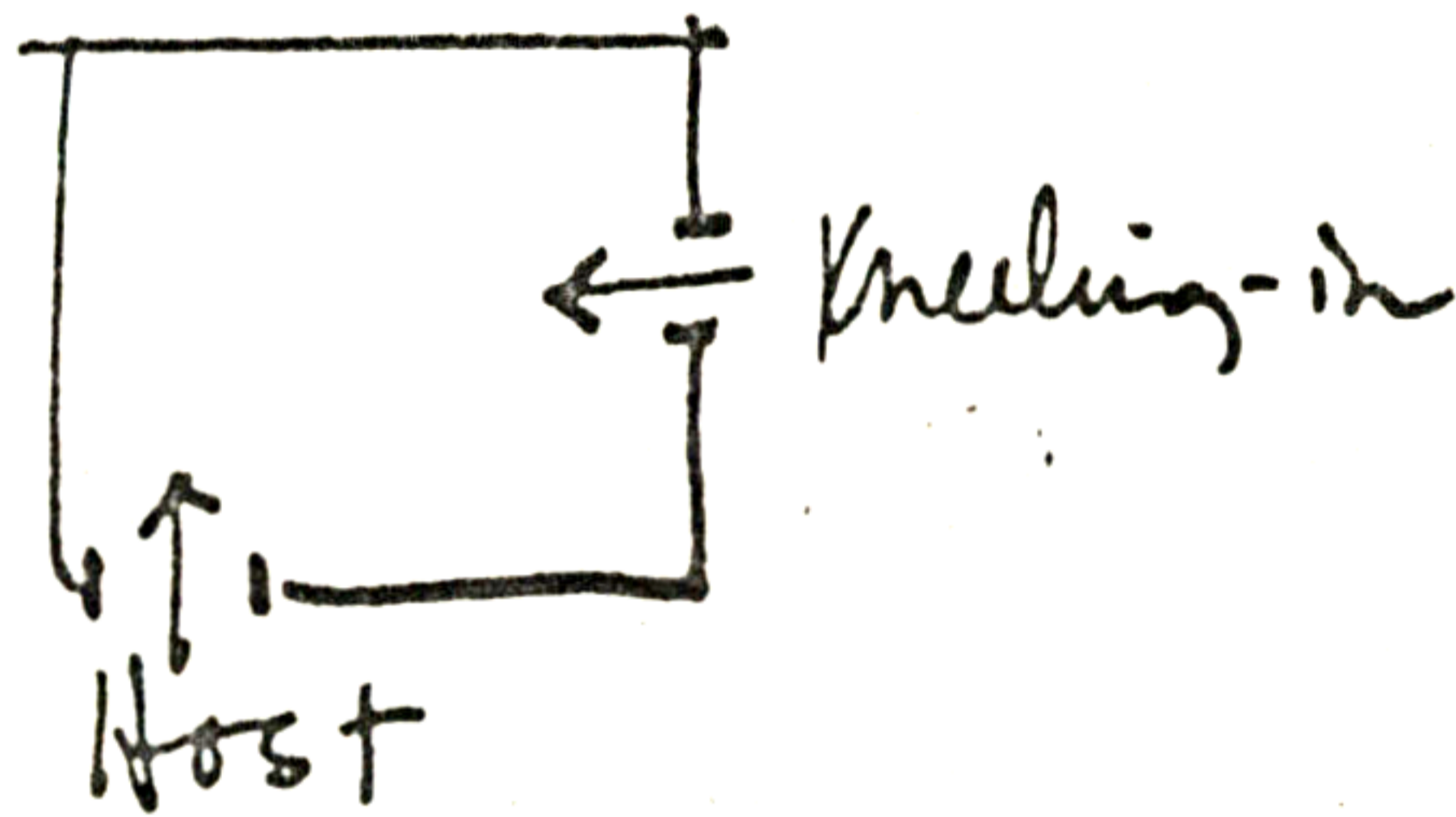


Tea Room 2 parts

HOST'S ENTRANCE

The host enters the tea house through a sliding screen door. The host's entrance is always through a different wall than the "kneeling-in entrance".

HOST'S ENTRANCE



~~From the kneeling-in entrance~~
Kneeling entrance

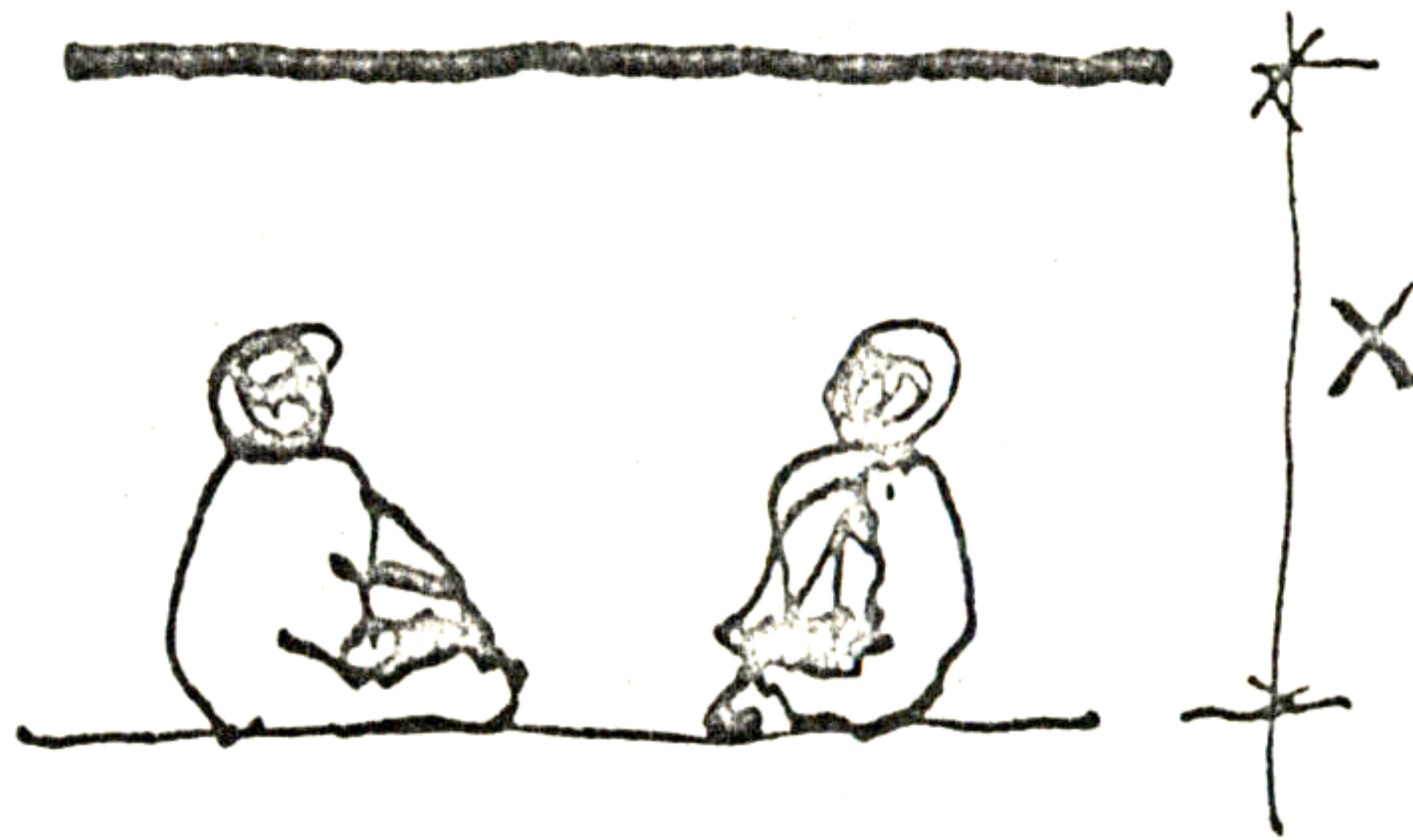
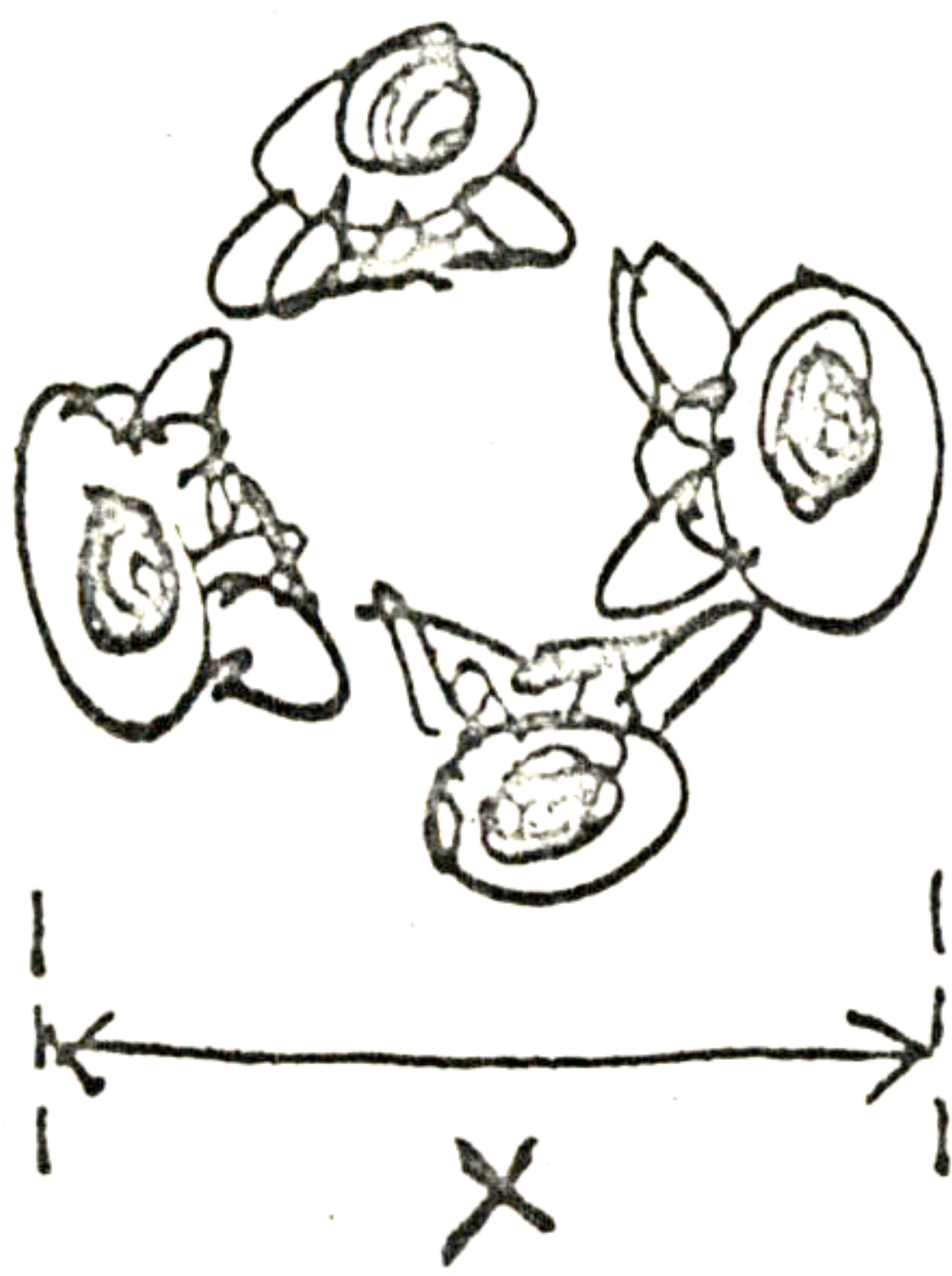
21

CEILING HEIGHTS

From Norm 6 1/2' ceiling

Where a space is to contain a social situation of roughly x feet social diameter, then the ceiling height over the social situation is of the same order of magnitude as x .

CEILING HEIGHTS



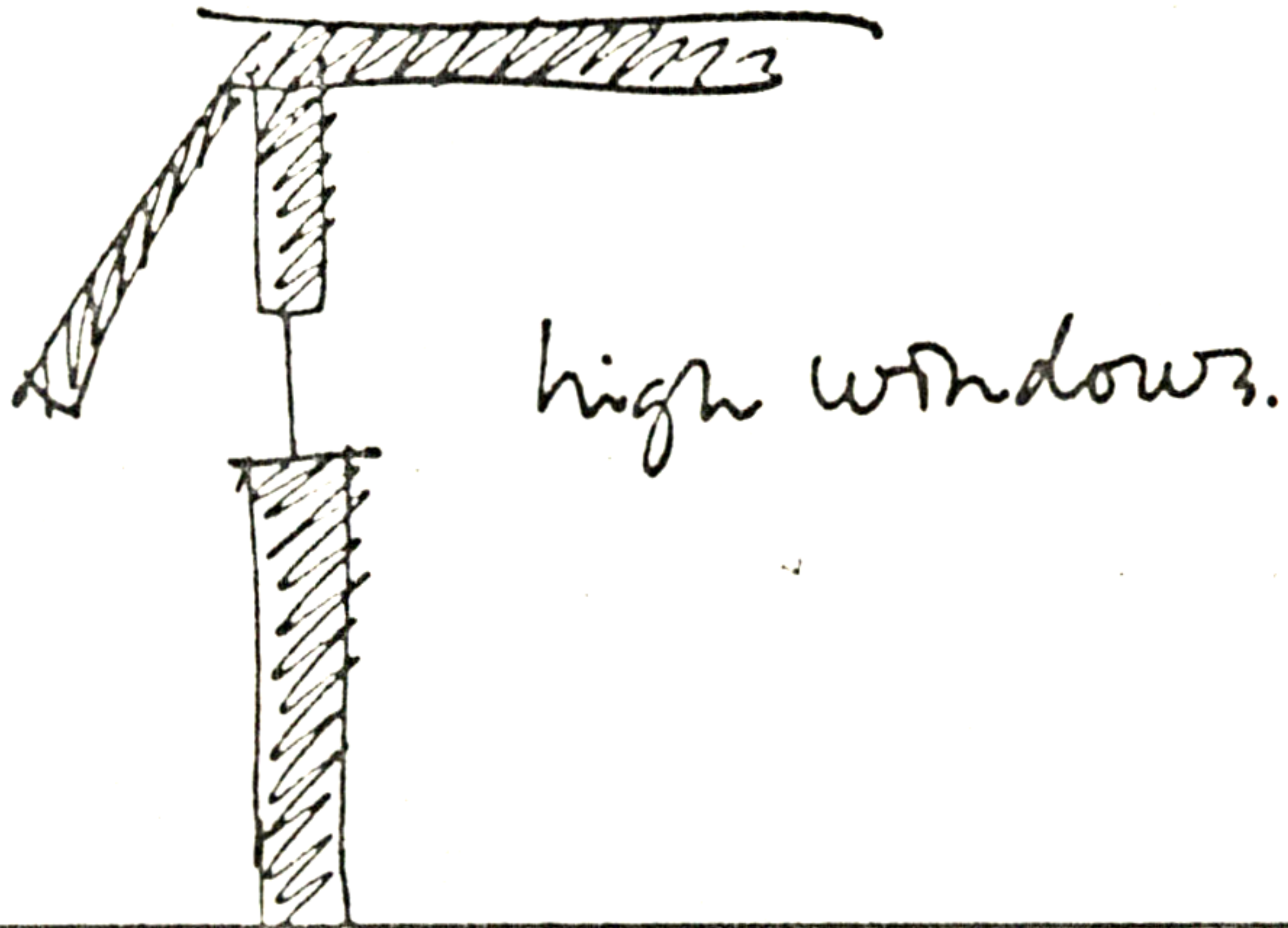
Then from Norm 3 feet

22

DIM LIGHTING

There are very few windows in the tea house walls. Where there are windows they are high, near the ceiling - and spaced to give a dim, indirect light throughout the tea house.

DIM LIGHTING



Ceiling height

TOKONOMA

In the tea house there is a small alcove called the tokonoma. It is a shallow alcove, for the display of art objects, and is visible upon entering the tea house. The size of the tokonoma varies with the size of the tea house: In the smallest tea house the tokonoma is simply a curve in the wall.

23

TOKONOMA

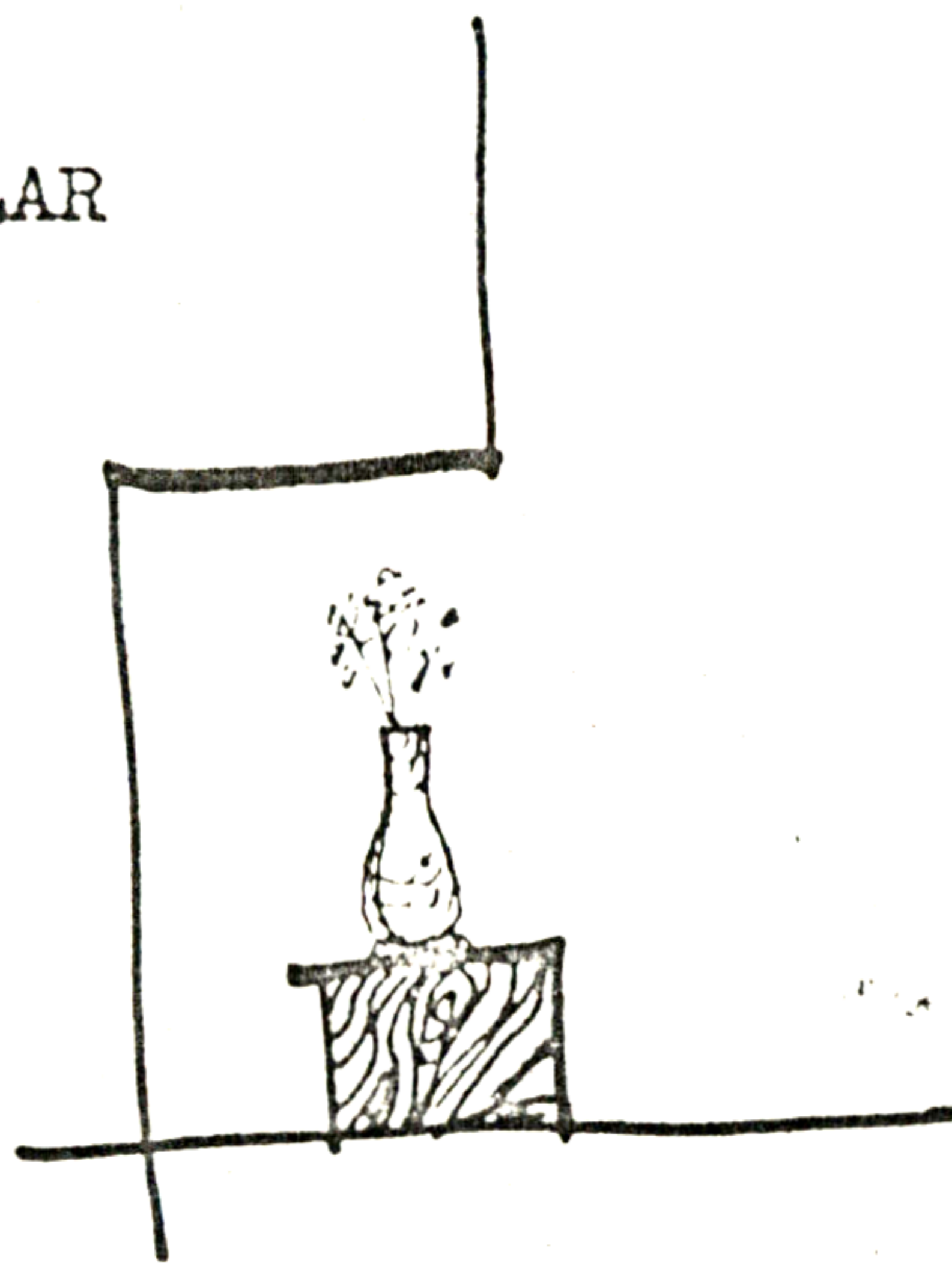


Tea House has two parts
Tea Room size

TOKONOMA PILLAR

The tokonoma contains a small pillar on which art objects may be placed. The pillar is made of wood - a kind of wood not used in the rest of the tea-house.

TOKONOMA PILLAR



Tea House has 3 parts
tokonoma?