

Sum

1. Complete the site development. (Tuesday 10th)
2. Without stakes at all, go through remaining patterns, to make a complete working house. (next few days)

~~substantive knowledge of the construction process~~

3. Knowledge of general approach to be taken in construction is needed, but not detailed knowledge.
4. Walk one of us through the plan, still without stakes.  
Thursday ~~12~~<sup>19</sup>th and Tuesday 17th  
(At meeting to be arranged individually with one of three of us)
5. When it is approved, then ~~you must~~ place stakes, with intention that each stake will be a column, in the final construction of the house.

6. Show complete ~~1/4~~ 1/4 drawings of plan, based on stakes; and 1/4 scale sections. Show no elevations at this stage.  
Be ready to show these drawings at class crit on Thursday ~~19~~<sup>24</sup>th.

09/28/78

SITE REPAIR

SOUTH FACING OUTDOORS

POSITIVE OUTDOOR SPACE

WINGS OF LIGHT

MAIN ENTRANCE

HALF HIDDEN GARDEN

CAR CONNECTION

ENTRANCE TRANSITION

HIERARCHY OF OPEN SPACE

COURTYARDS WHICH LIVE

CASCADE OF ROOFS

SHELTERING ROOF

ROOF GARDEN

INTIMACY GRADIENT

COMMON AREAS AT THE HEART

ENTRANCE ROOM

COUPLES REALM

CHILDRENS REALM

Have these patterns  
done by the time we visit  
you on site

Have these patterns also  
done by Tuesday Oct 10,  
and make a 1/16 scale  
~~max~~ balsa sketch model

Also complete a 1/4 drawing  
of site, with stakes giving  
outlines of building shown

week 2 at the end

Codes & Inspection

644-6550

644-6528

on Milvia St. & Addison  
Bankcroft to Milvia (right)  
two blocks (?)

Alexander 841-6166

Davis 843-1278

King 843-3229

PATTERN LANGUAGE FOR PLACING ROOMS IN THE HOUSE

~~COMMON AREAS AT THE HEART~~

INTIMACY GRADIENT

INDOOR SUNLIGHT

COMMON AREAS AT THE HEART

ENTRANCE ROOM

~~ENTRANCE ROOM~~

STAIRCASE AS A STAGE

ZEN VIEW

TAPESTRY OF LIGHT AND DARK

COUPLES REALM

CHILDRENS REALM

SLEEPING TO THE EAST

FARMHOUSE KITCHEN

PRIVATE TERRACE ON THE STREET

A ROOM OF ONES OWN

SEQUENCE OF SITTING SPACES

BED CLUSTER

BATHING ROOM

TEENAGERS COTTAGE

OLD AGE COTTAGE

LIGHT ON TWO SIDES OF EVERY ROOM

BUILDING EDGE

SUNNY PLACE

OUTDOOR ROOM

GALLERY SURROUND  
~~MMMMMMMMMMMM~~

SIX FOOT BALCONY

CONNECTION TO THE EARTH

TERRACED SLOPE

FRUIT TREES

GARDEN WALL

TRELLISED WALK

GARDEN SEAT

ALCOVES

WINDOW PLACE

BED ALCOVE

DRESSING ROOM

CEILING HEIGHT VARIETY

THE SHAPE OF INDOOR SPACE

W HALF OPEN WALL

INTERIOR WINDOWS

CORNER DOORS

THICK WALLS

CLOSETS BETWEEN ROOMS

STRUCTURE FOLLOWS SOCIAL SPACES

COLUMNS AT THE CORNERS

## WOOD COLUMN AND BEAM BUILDING SYSTEM

### 1. PLACE STAKES

### 2. DIG POST HOLES

Dig one hole for each stake.

### 3. PLACE MAIN COLUMNS

Place 6x6 columns in post holes and pour concrete around column. Use treated wood, or pressure dip the lower end of the column. Columns are cut to length (for one or two storeys).

### 4. NOTCH COLUMNS

Rout a 3/4" notch in columns to receive beam.

### — 5. PLACE FIRST FLOOR BEAM

Set 4x10 beams, from column to column, into the 3/4" routed notches, and secure with metal support angles.

### 6. ROUGH PLUMBING LINES

Lay rough plumbing lines from supply to the house, and stub-up at appropriate locations.

7. PLACE SECONDARY BEARING POSTS  
Set additional 4x4's, at 4' intervals (maximum), to support the first floor beams. Set into concrete, poured into posts holes.
8. PLACE SECONDARY FLOOR BEAMS  
Set 3x8's at 4' centers (maximum) to span floor beams. Use metal joist hangers, setting 3x8's flush with the bottom of 4x10 floor beams.
9. LAY FIRST FLOOR  
Set 2x6 T&G plank flooring over 3x8 secondary beams.
10. NOTCH COLUMNS (repeat step 4)
11. PLACE SECOND FLOOR BEAMS/ FIRST FLOOR EAVE BEAMS  
Set 4x10 beams into 3/4" notches for second floor. If only one storey, set 4x8 beams as eave.
12. PLACE WINDOW AND DOOR POSTS AT FIRST FLOOR  
Locate all windows and doors. Place a 4x4 posts on both sides of each location. Secure each post to floor beam with metal angles.
13. COMPLETE PLACEMENT OF SECONDARY COLUMNS AT FIRST FLOOR  
If there are any spans of more than 6 feet remaining, insert additional secondary posts (4x4's) to support second floor beams/eave beams. Secure as in step 12.

14. PLACE SECONDARY FLOOR BEAMS AT SECOND FLOOR (repeat step 8)

15. LAY SECOND FLOOR (repeat step 9)

16. PLACE DORMER POSTS

Locate second floor dormers and place 4x4's on both sides of the window location. Use metal angles to secure posts to 4x10 floor beams.

17. NOTCH COLUMNS (repeat step 4)

Where dormers are encountered, place metal support angles on each post to form eave beam seat.

18. PLACE SECOND FLOOR EAVE BEAMS

Set 4x8's into 3/4" routed notches (and angles at dormer posts) as in step 5.

19. PLACE WINDOW AND DOOR POSTS AT SECOND FLOOR (repeat step 12)

20. COMPLETE PLACEMENT OF SECONDARY COLUMNS AT SECOND FLOOR  
(repeat step 13)

21. PLACE RAFTER BEAMS

Set 3x8 roof beams at 4' centers (maximum), similar to step 8. Notch rafter beams at eave, and lean on central ridge board.

22. PLACE TIE BEAMS

Place 1x6's on both sides of each 3x8 rafter beam spanning between opposing rafter beams. Set 1x6's halfway up the beam.

23. LAY ROOF DECK/CEILING

Place 2x6 T&G planks, first over tie beams for ceiling, and then over rafters for roof decking.

24. COMPLETE ROOF

Set tiles, shingles, shakes, or built-up roofing over the appropriate underlayment.

25. PLACE WALL FRAME INFILL

Add 2x3 frames (at 2' centers maximum) between all secondary posts. Secure by toenailing as in conventional framing.

26. EXTERIOR SHEATHING AND TRIM

Place 1x6 T&G wall sheathing over frame. Complete trim on exterior: 1x10 vertical trim boards at each major column, and 1x\_\_ trim at roof eaves and gables.

27. INSTALL PREHUNG WINDOWS AND DOORS

Set prehung windows and doors into openings with the exterior trim in place.



28. INSTALL ELECTRICAL WIRING AND BOXES

Drill wall frames for wiring and set electrical boxes into frame wall.

29. INSTALL FINISH PLUMBING

30. INSTALL INSULATION

Foam urea formaldehyde into wall cavity formed by wall framing and exterior sheathing.

31. APPLY 1/2" GYPSUM BOARD/SHEETROCK

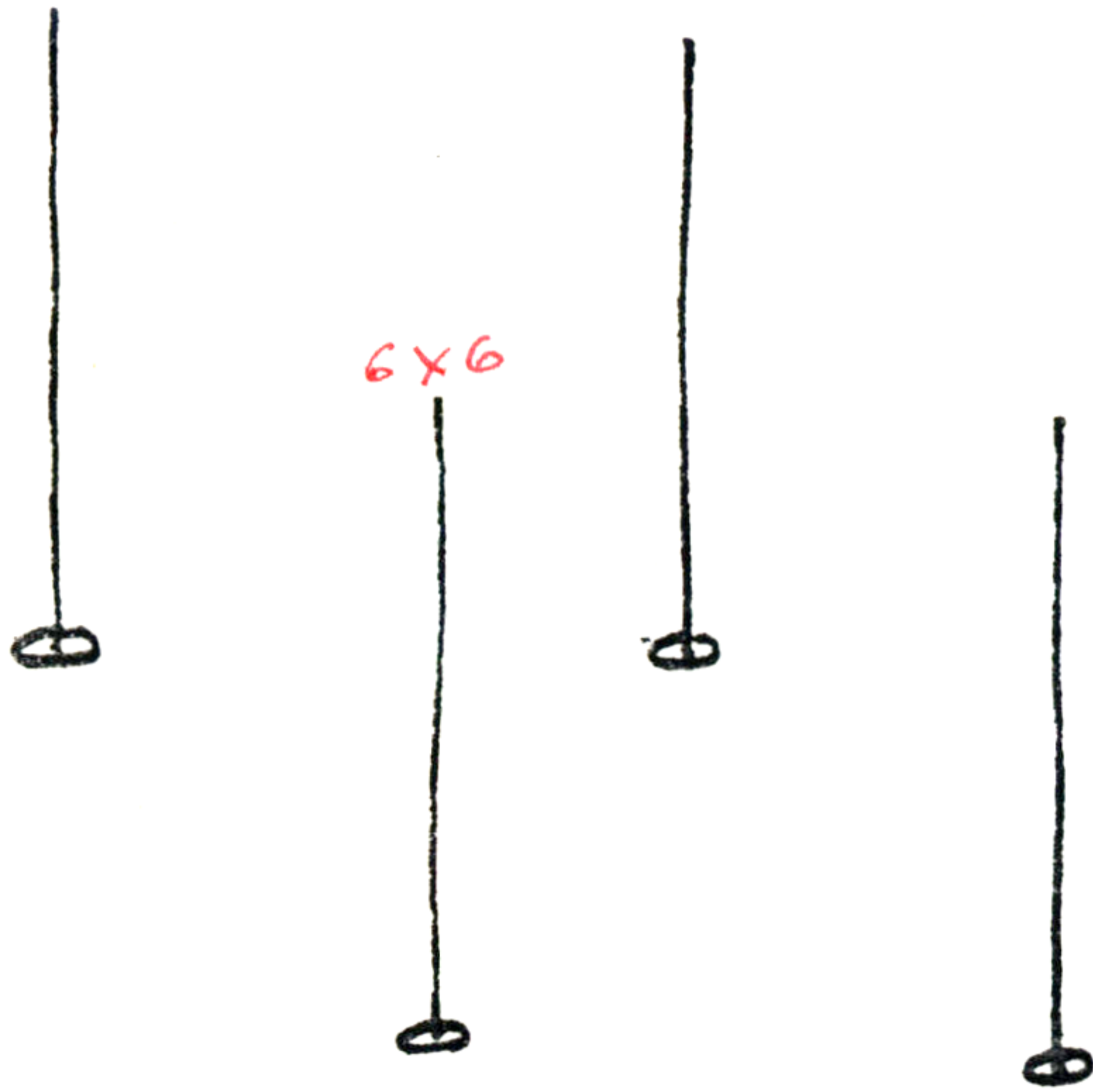
32. PAINT

33. COMPLETE INTERIOR TRIM

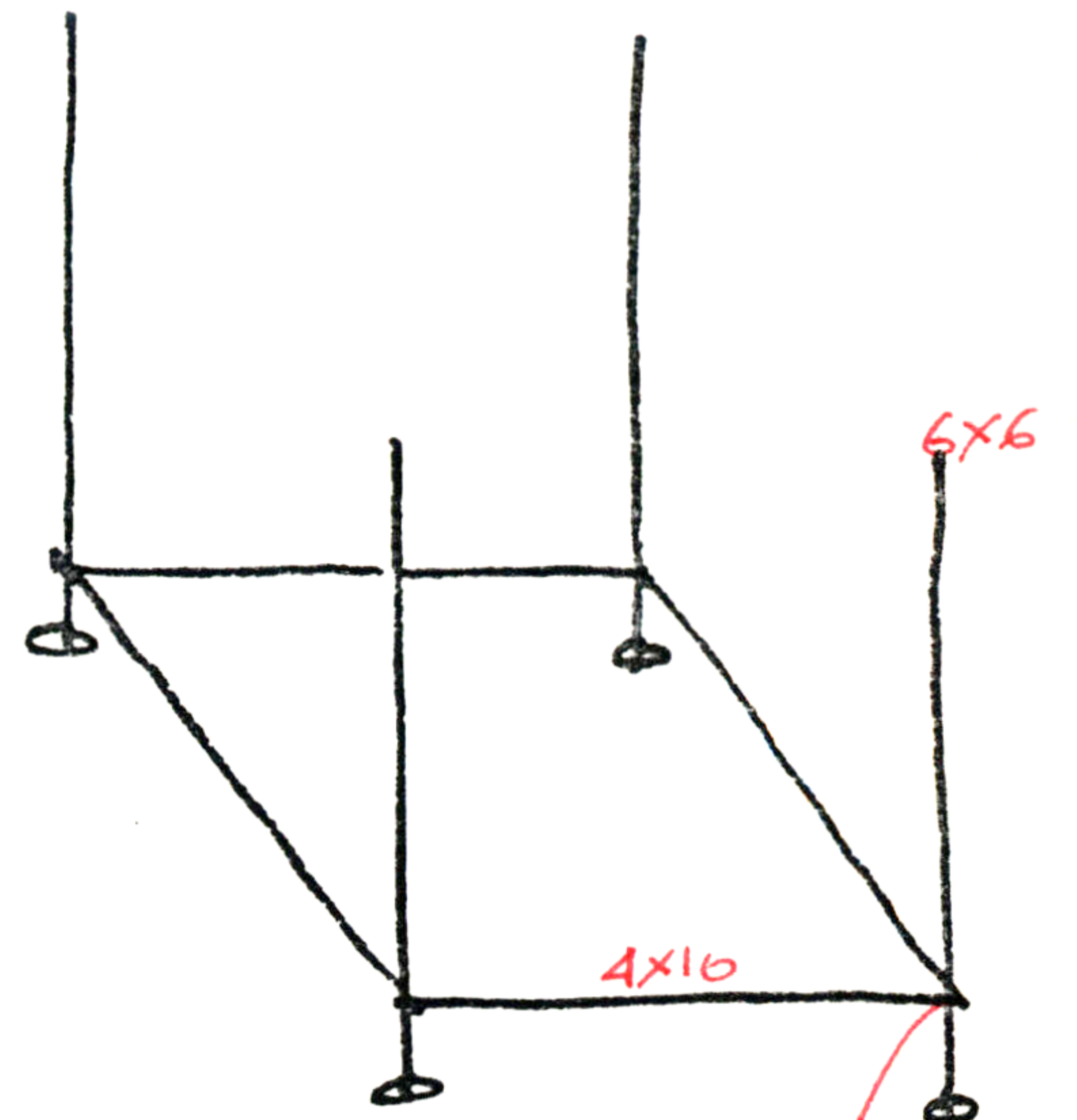
Apply interior trim at doors, windows, baseboard, etc.

# PARTIAL SEQUENCE

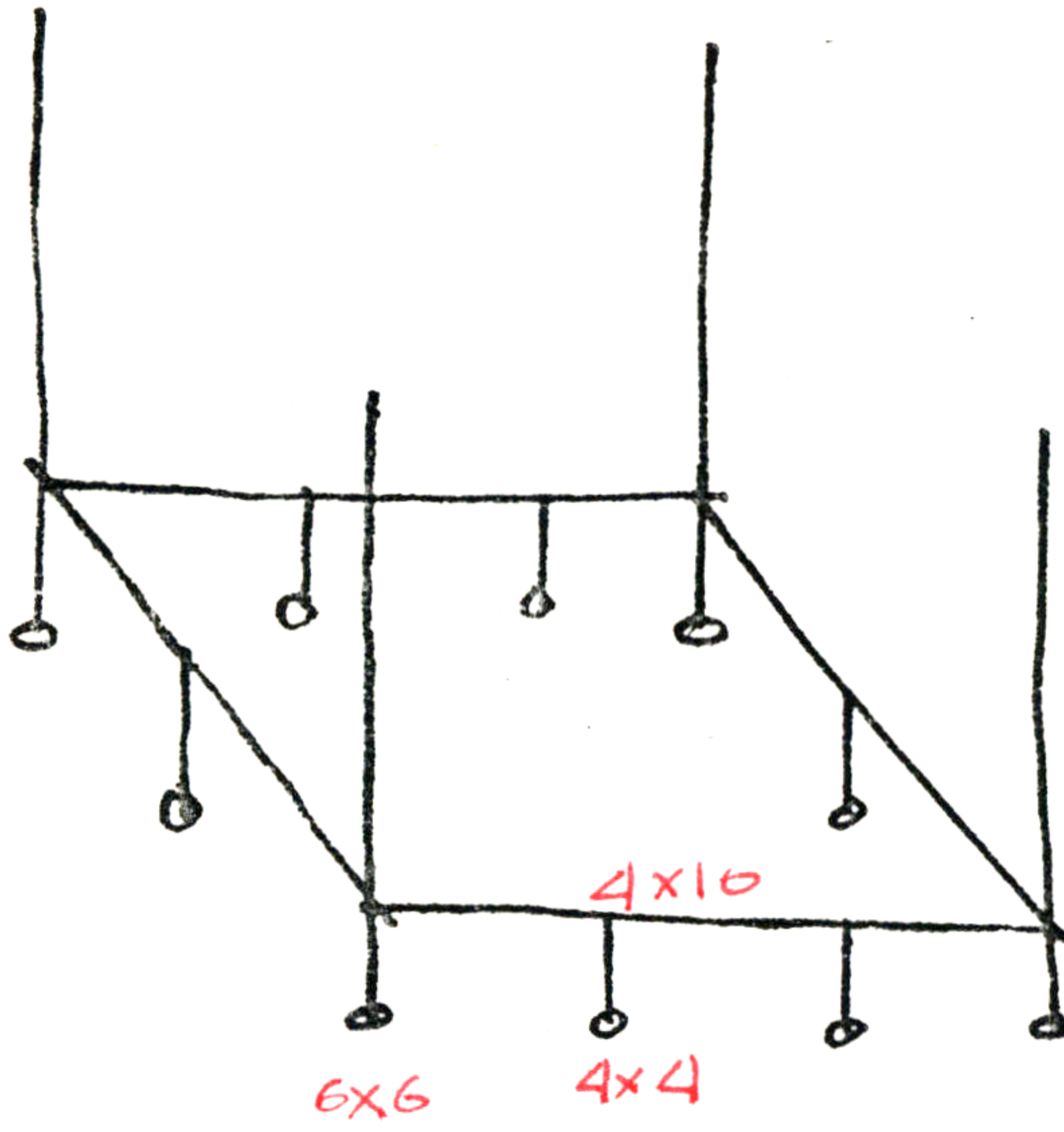
3.



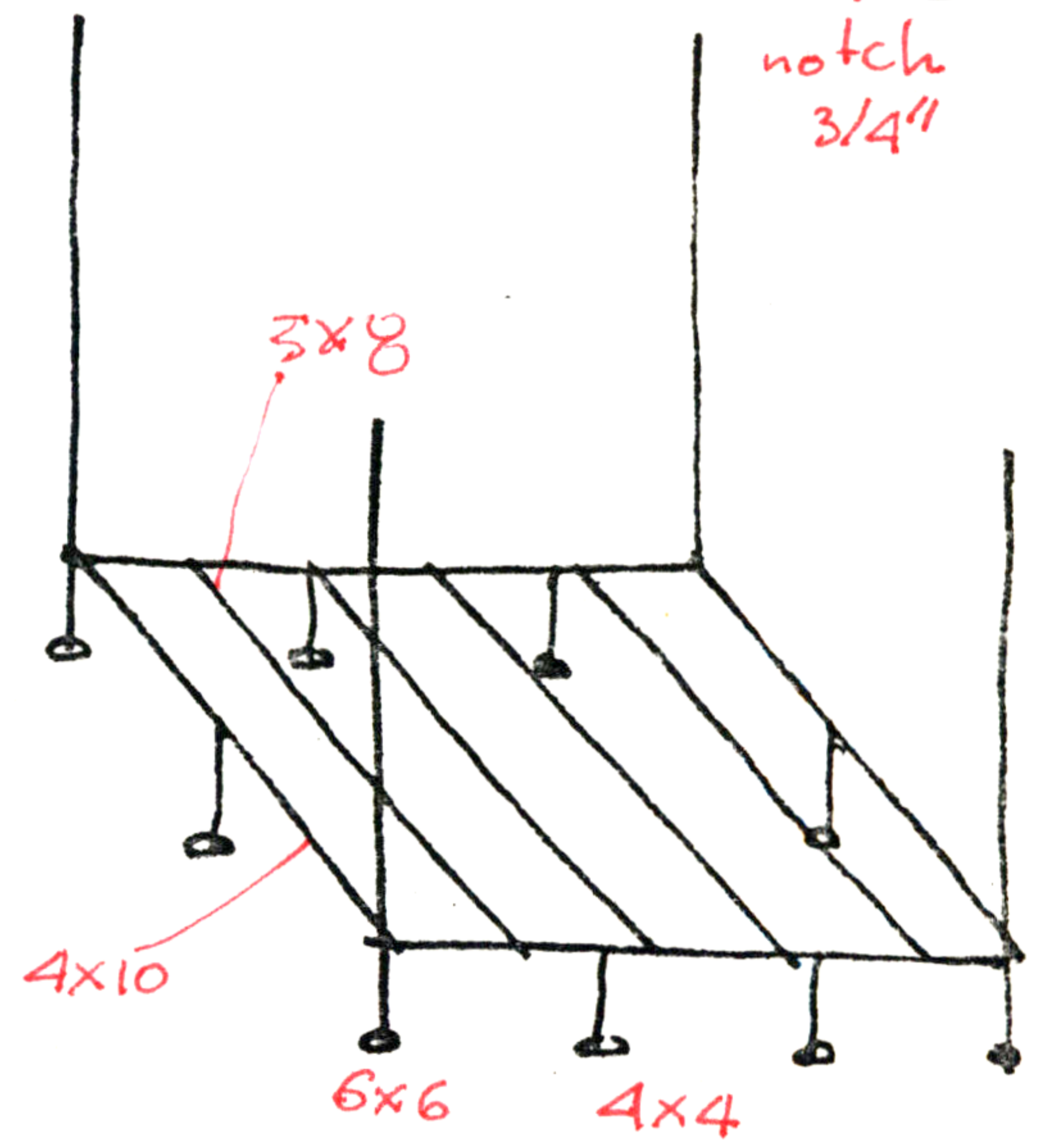
5.



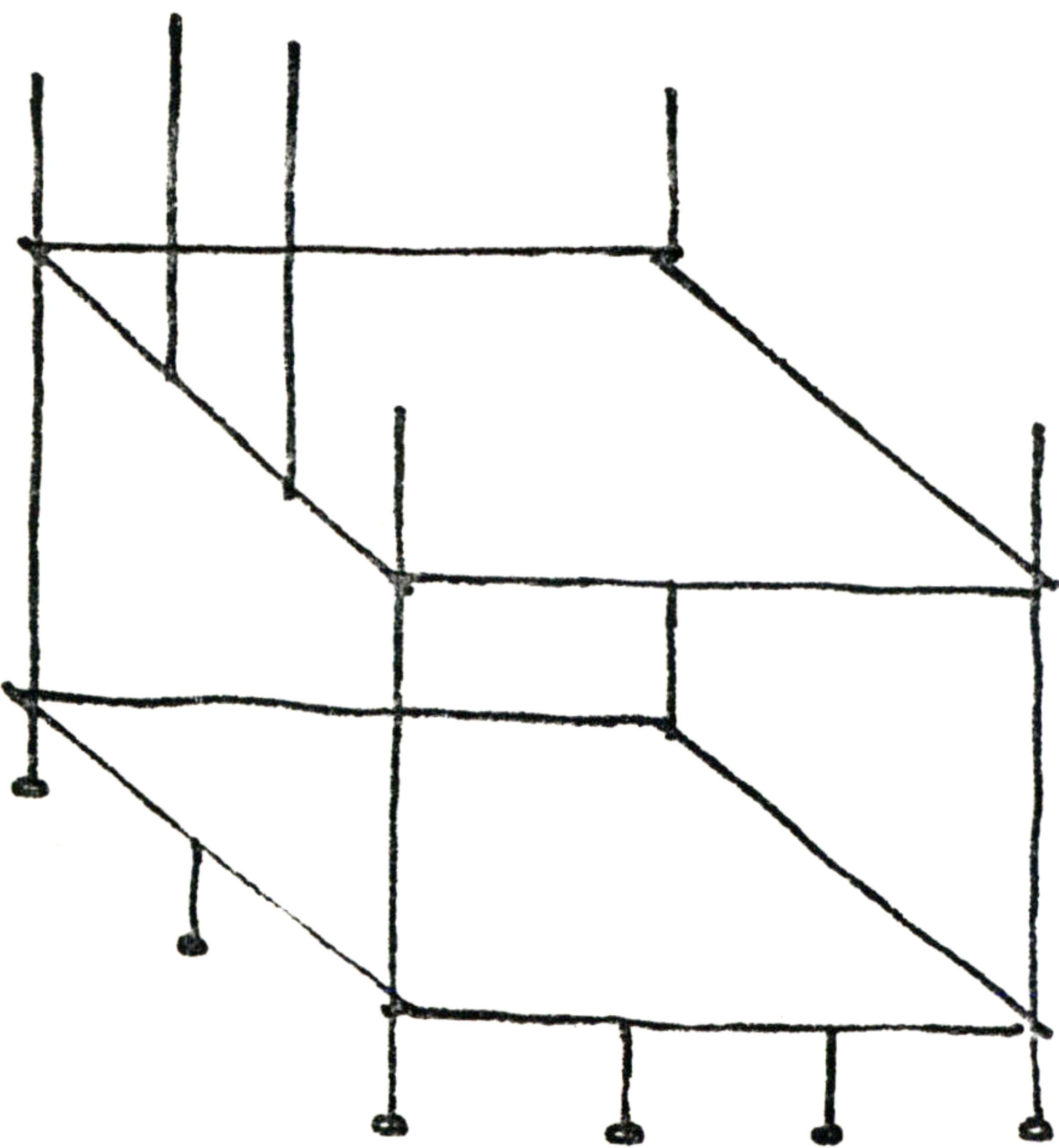
7.



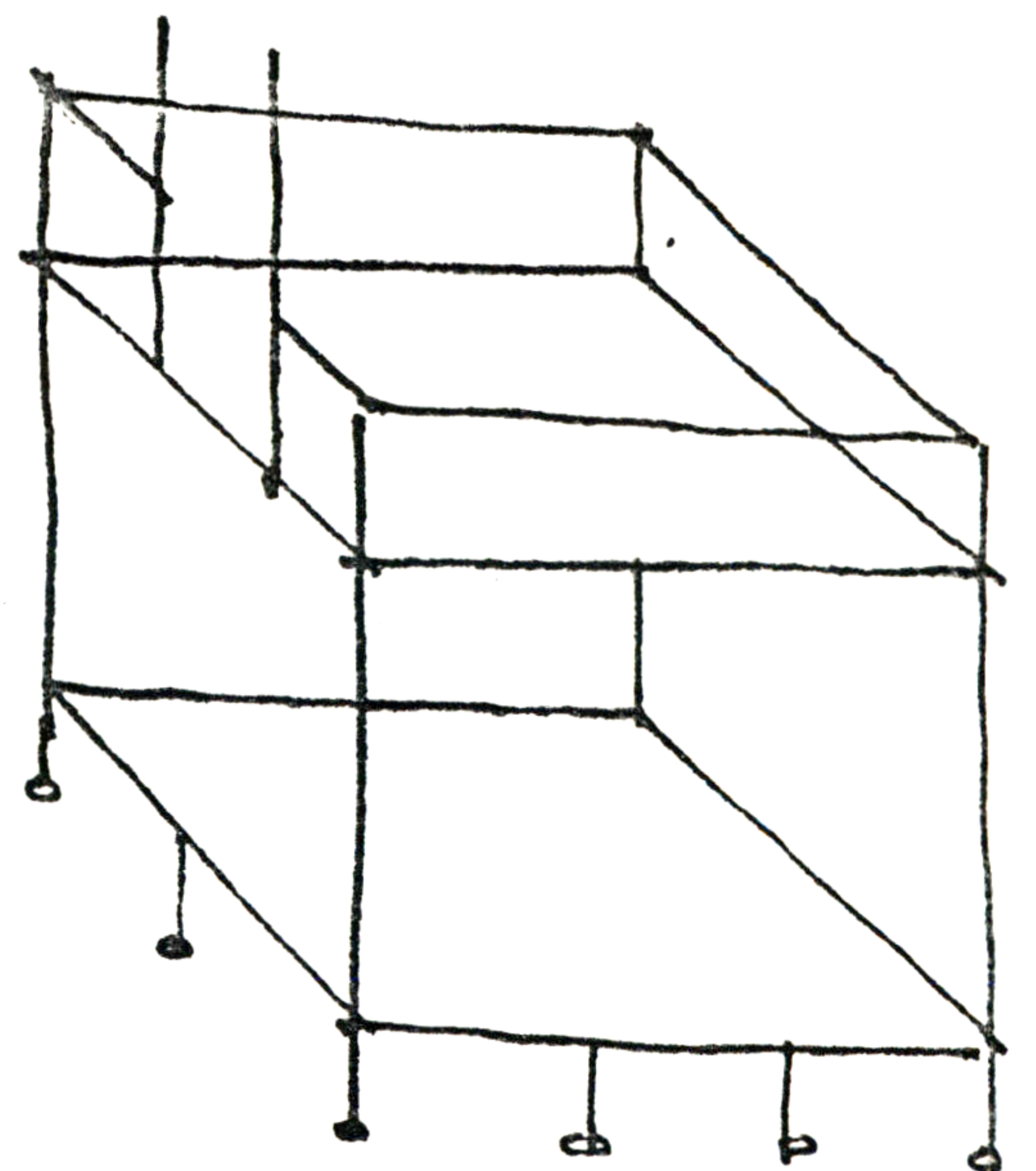
8.



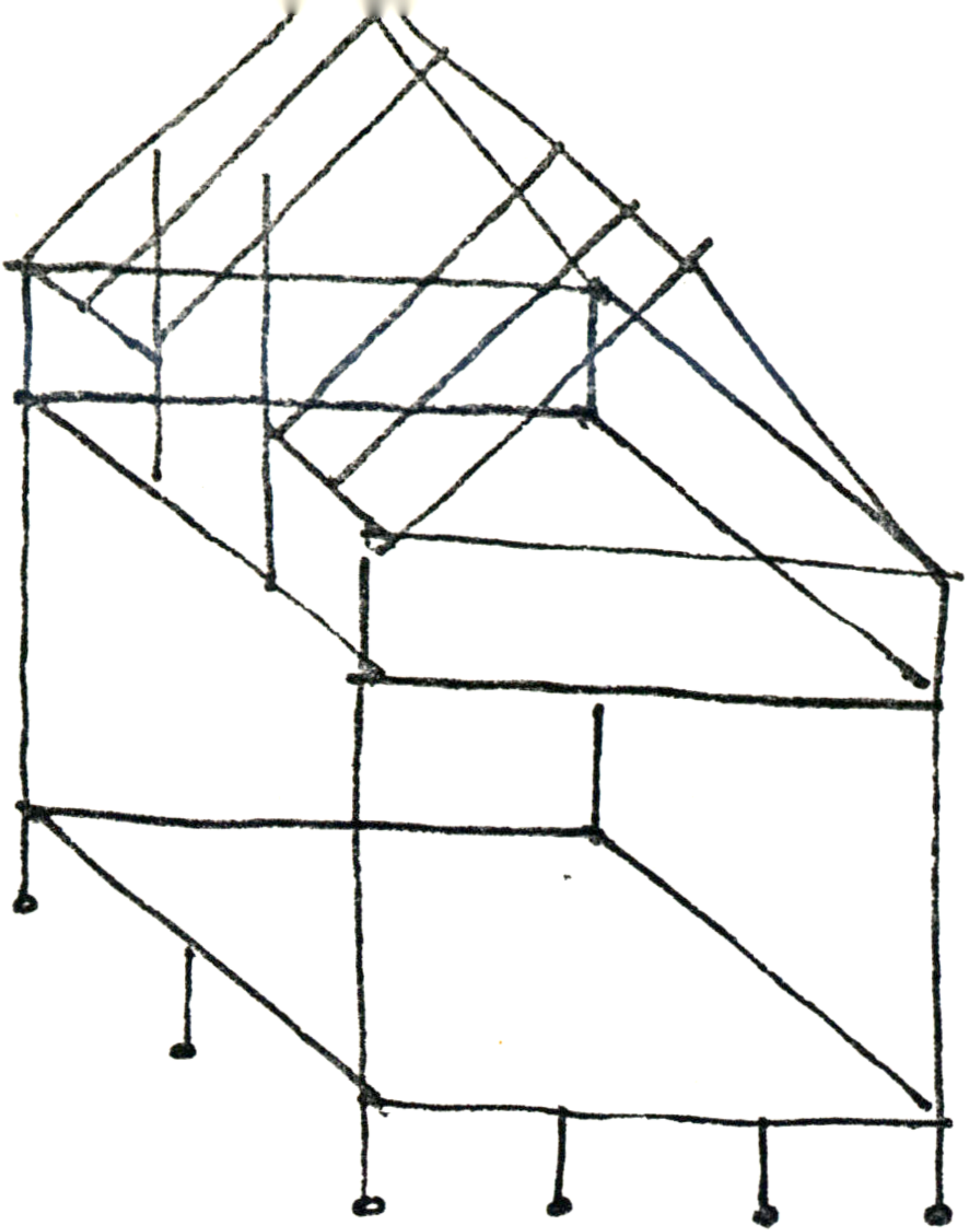
16.



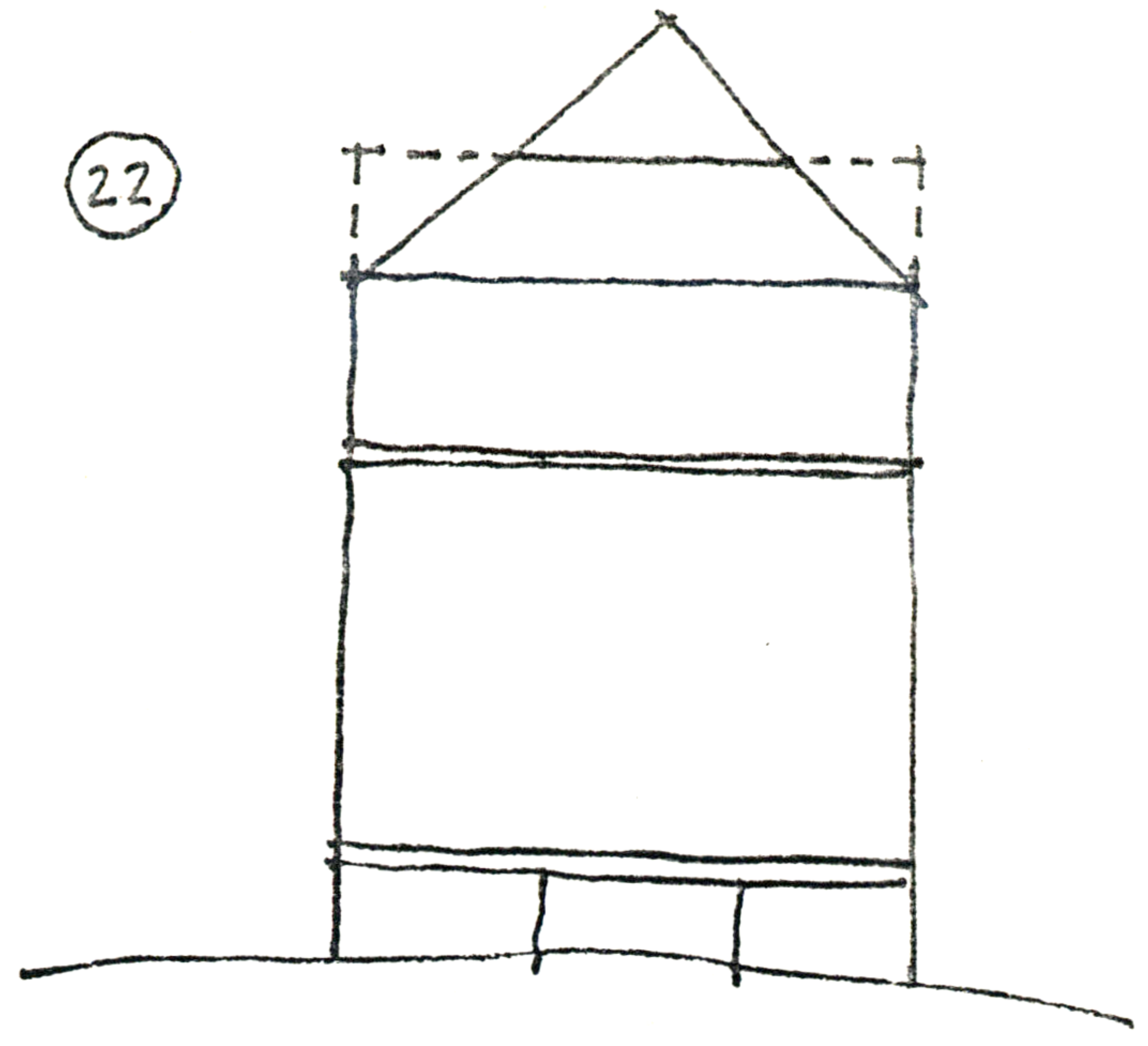
18.



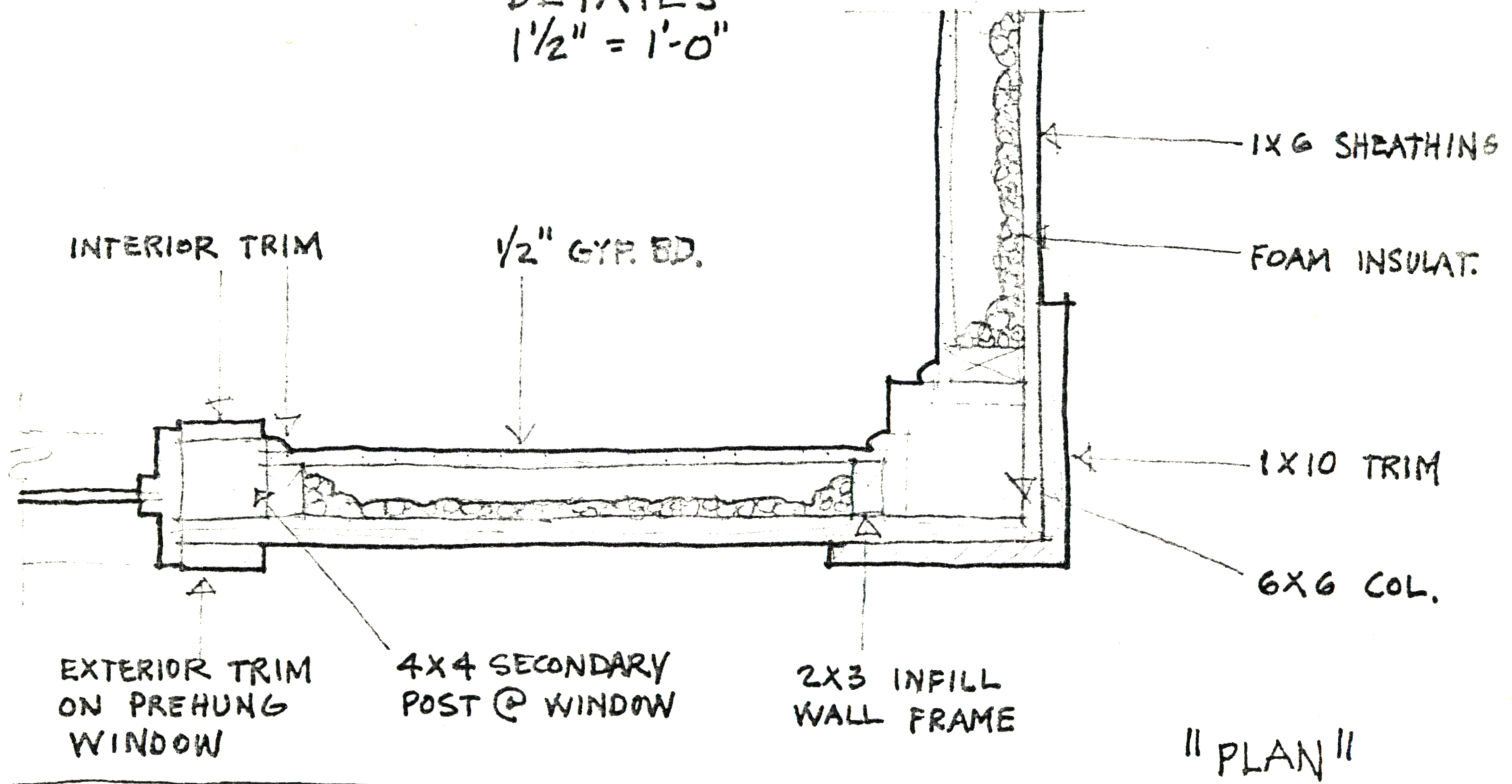
21.



22.



DETAILS  
 $1\frac{1}{2}'' = 1'-0''$



6x6 COL. BEYOND

4x10 SECONDARY BEAM

