

Entrance Shape

If the entrance is not shaped so you can see it, as you approach along the building, it will be annoying to find.

A person approaching a building must be able to see the entrance clearly. Yet, many of the people approaching the building are walking along the front of the building, and parallel to it. Their angle of approach is acute. From this angle, many entrances are hardly visible.

An entrance will be visible from an acute angled approach if:

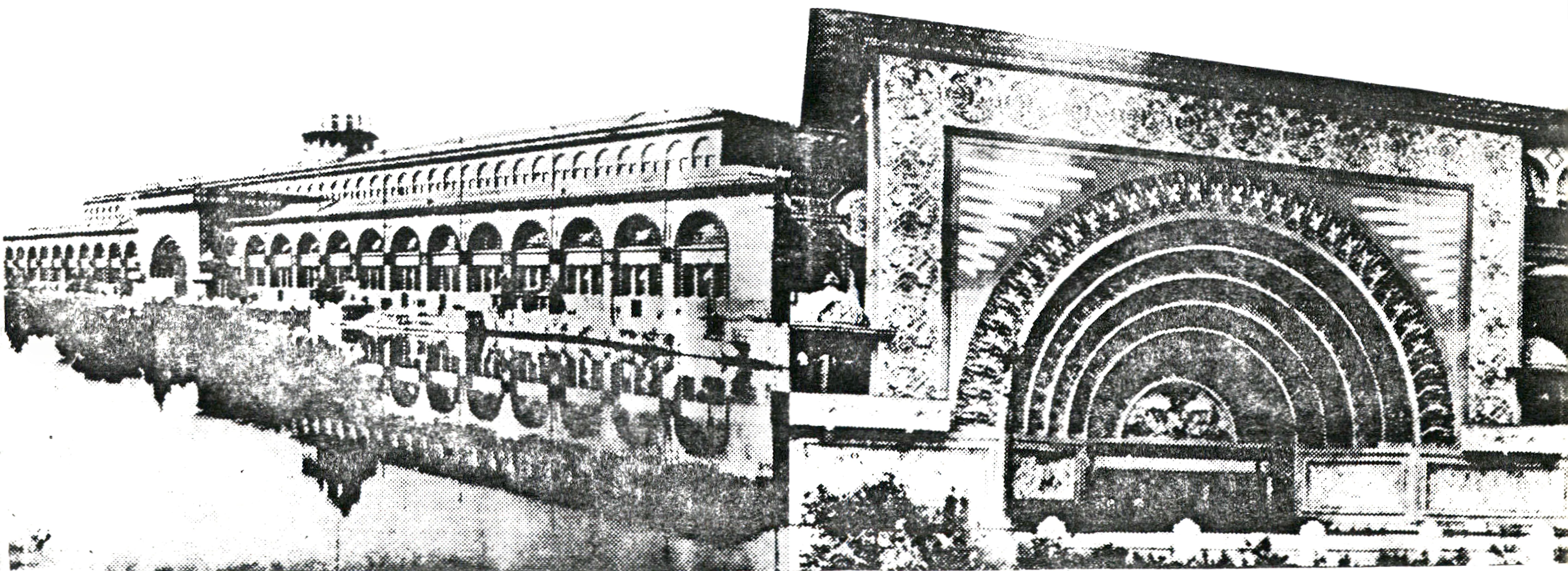
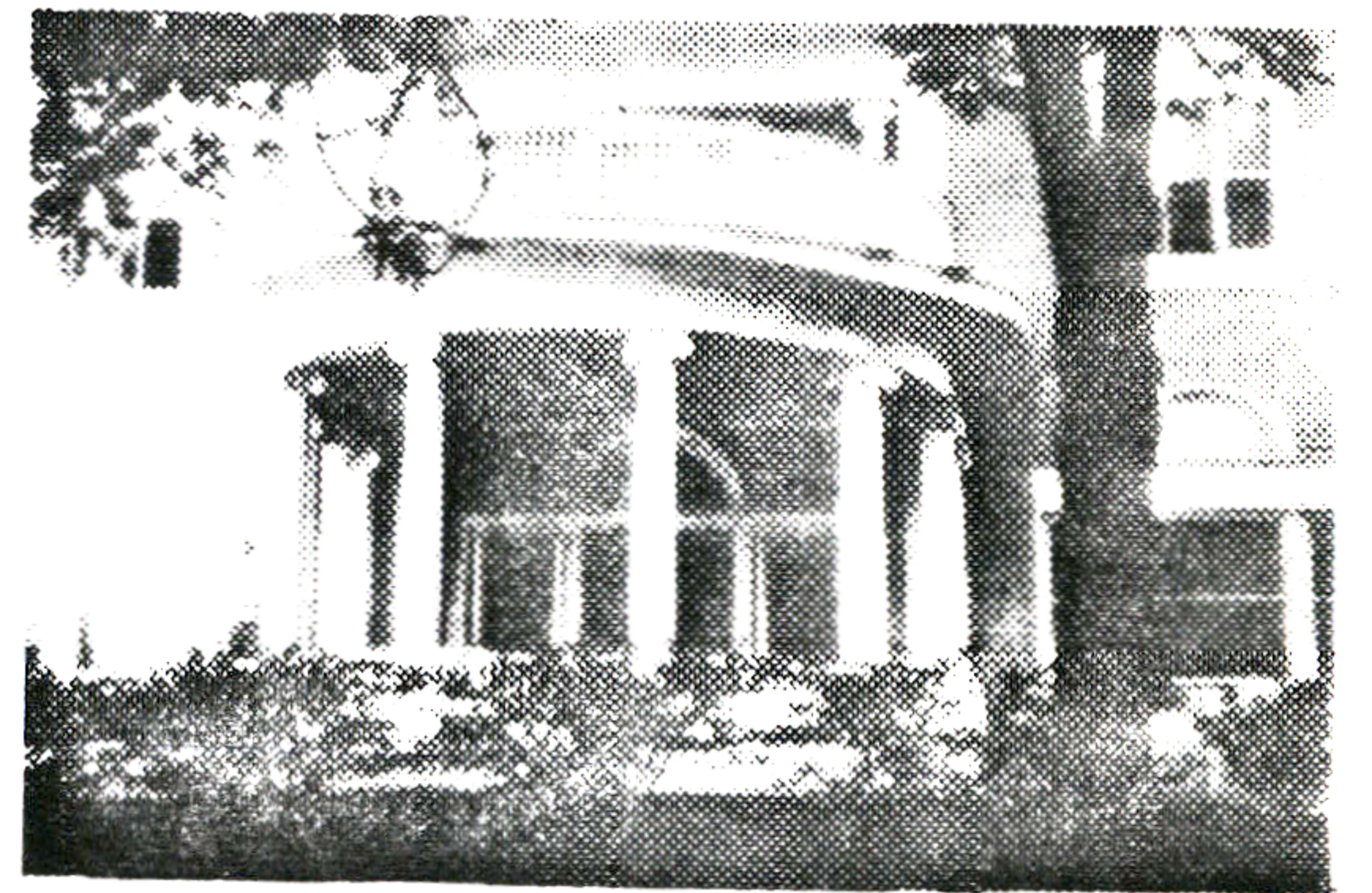
1. The entrance sticks out beyond the building line.
2. The entrance is so deeply recessed, that the void is visible from this angle. In this case, it will help

further, if the recess is flared, so that the far side of the recess shows up as a source of differentiation.

3. The building front flares back gently, and the entrance sticks out into the recess so created. This will be useful, if the building is built all the way forward to the building line.
- (continued over)



Therefore: Either project the entrance strongly beyond the building front; or set the entrance back into a flared recess; or create some combination of the above.



Entrance Shape

Problem (continued)

Although the heart of the pattern lies in these relationships there are many important refinements which are, for the moment, too hard to pin down. The relative color of the entrance, the light and shade immediately around it, the presence of mouldings and ornaments, may all play a part. Above all, it is important that the entrance be strongly differentiated from its immediate surroundings.

Context

This pattern applies to any public building on a street where there is not a path leading specifically to the entrance.

By: Christopher Alexander, Sara Ishikawa and Murray Silverstein.

July 1968 revised September 1970

This pattern is tentative. If you have any evidence to support or refute its current formulation, please send it to the Center for Environmental Structure, P.O. Box 5156, Berkeley, California 94705; we will add your comments to the next edition.