

Accessible Bathrooms

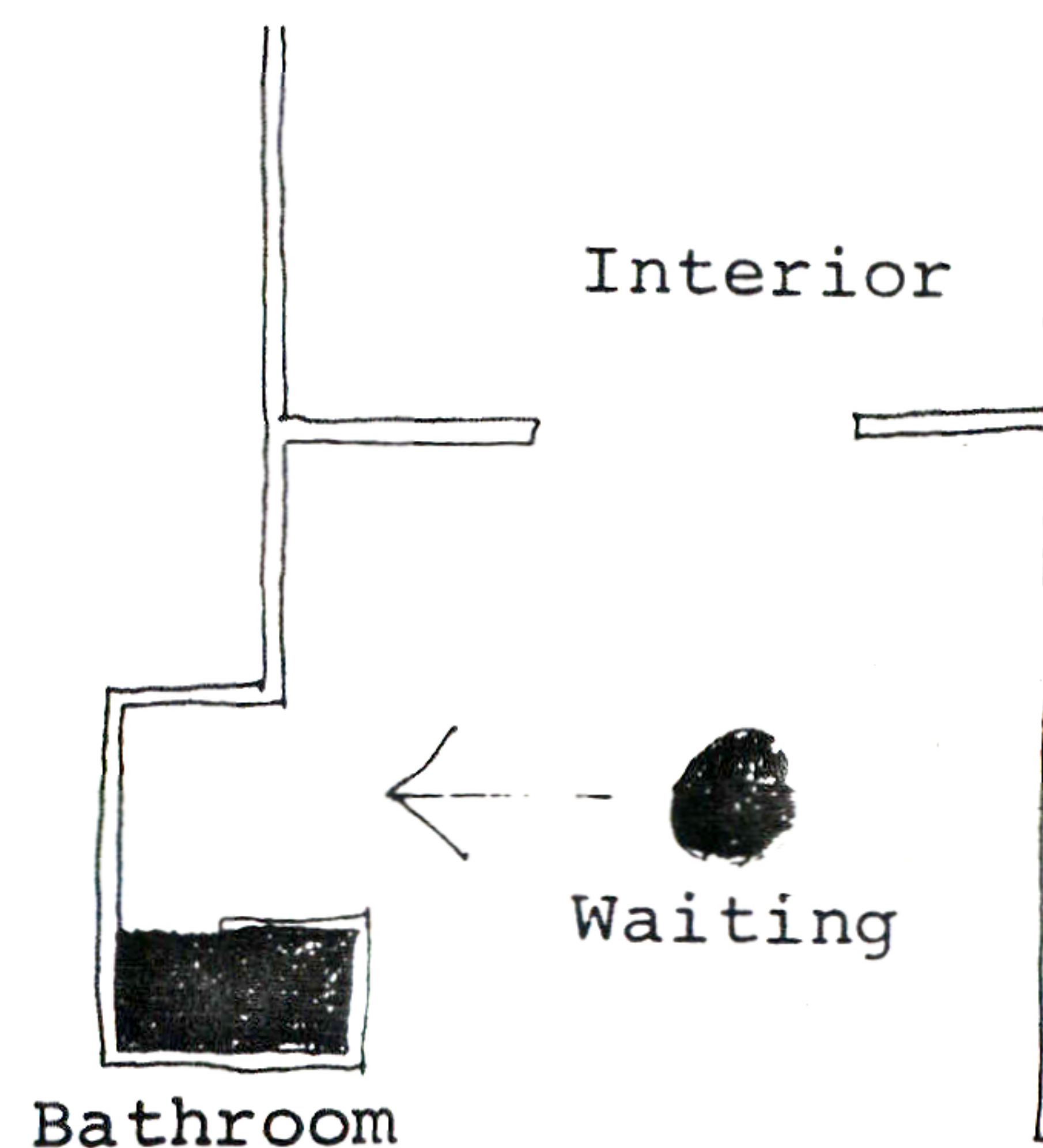
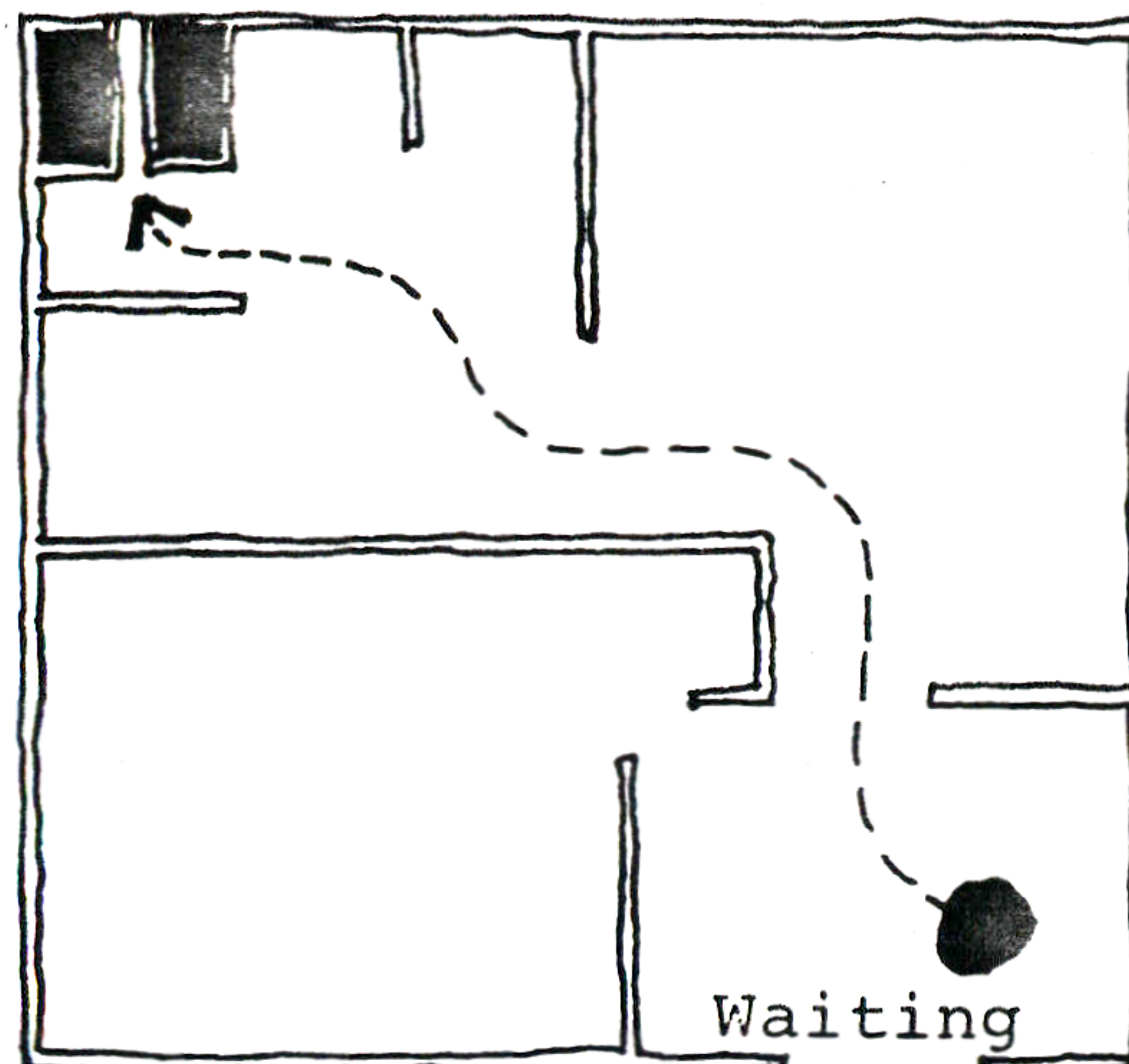
While people are waiting for an appointment they will want to use the bathroom; they shouldn't have to traipse over half the building to find it.

Bathrooms will, of course, be scattered through the building to serve the staff. If the public is forced to search around for these facilities there are two effects: First, it is simply a nuisance to the public; it puts them off. Second, in many cases they will have to wander through office pools to get to the bathroom, and this makes the staff nervous. If there is ever a theft of any kind, staff-community relations are threatened. Yet a community building cannot deny the use of bathrooms to the general public.

(continued over)

Therefore: Locate the public bathrooms immediately beside the waiting areas, so people do not have to walk through the interior of the building to get to them.

Bathroom



Accessible Bathrooms

Context

Any building which provides public services, and requires its clients to wait for these services, in open waiting areas.

By: Christopher Alexander, Sara Ishikawa, Murray Silverstein.

July 1968 revised June 1970

This pattern is tentative. If you have any evidence to support or refute its current formulation, please send it to the Center for Environmental Structure, P.O. Box 5156, Berkeley, California 94705; we will add your comments to the next edition.