

Day Care Home Base

Day care patients need a place they feel they belong to.

While they are at the mental health center, day care patients socialize with each other, have group meetings and meet with the staff. They therefore need a place where they can all come together, a place with a family room atmosphere so the

patients can feel at home. Other activities which may go on there include, making coffee, having bag lunches, having a birthday party, reading. In addition a bed should be provided for a patient who may need a short rest. The "home base"

should be capable of supporting at least three different activities at the same time.

Lockers for each patient, telephones and toilets should be accessible from "home base".

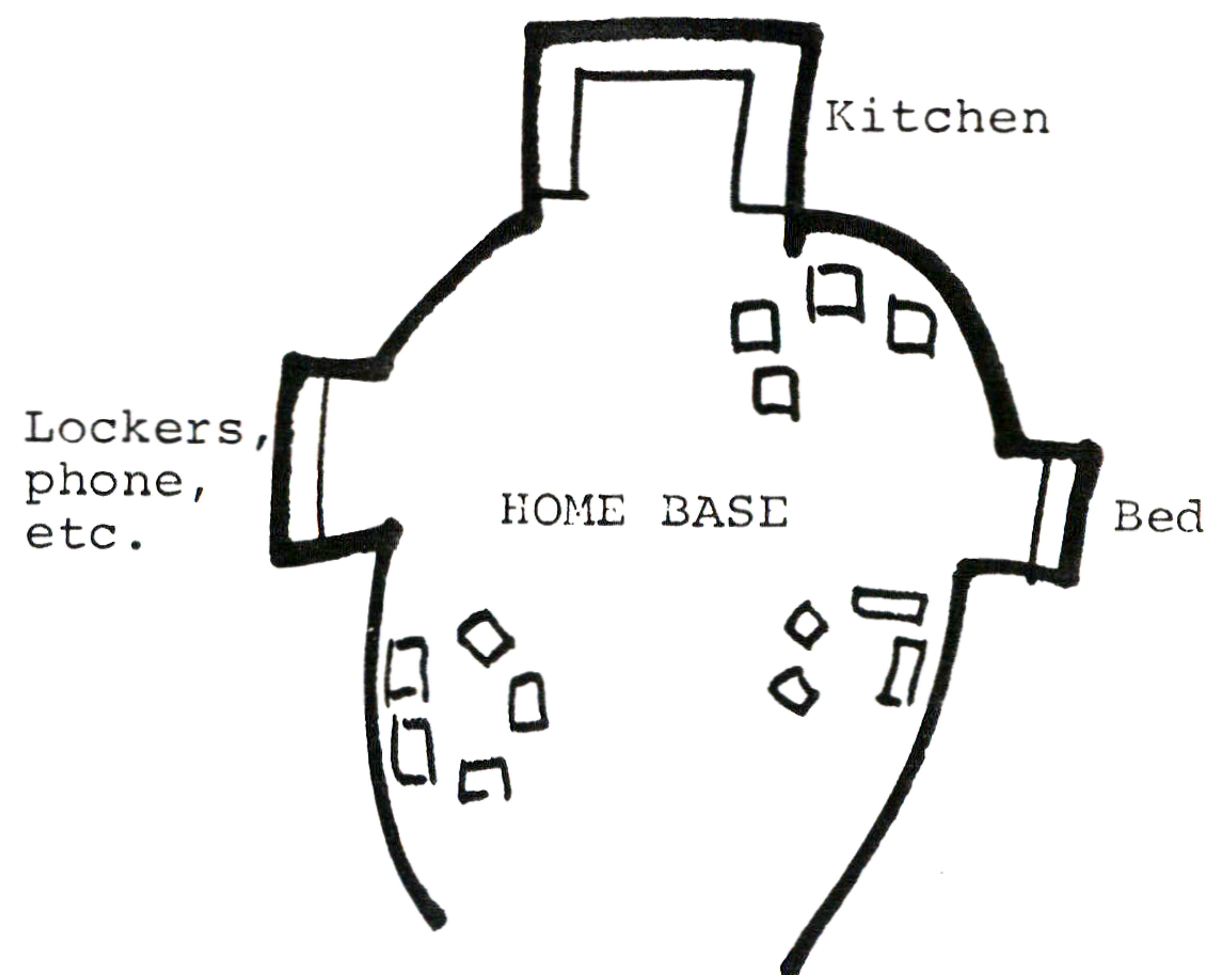
Therefore, in and near the front of the day care area provide:

1. A family room space with flexible seating arrangements for small and group discussions, and capable of supporting three activities at the same time.

2. A domestic type kitchen which allows a minimum of four people to serve and prepare food.

3. A public telephone, toilets, and lockers for each day care patient (large enough for coat, overshoes, purse and small articles adjacent to the "home base".) The locker should be lockable by a combination type lock.

4. A bed for any patient who needs to rest.



Day Care Home Base

By: Clyde Dorsett and Friedner Wittman

February 1970, revised November 1970

This pattern is tentative. If you have any evidence to support or refute its current formulation, please send it to the Center for Environmental Structure, P.O. Box 5156, Berkeley, California 94705; we will add your comments to the next edition.