

# *Light Is Information*

*If the places where the light falls are not the places you are meant to go towards, you will inevitably be confused.*

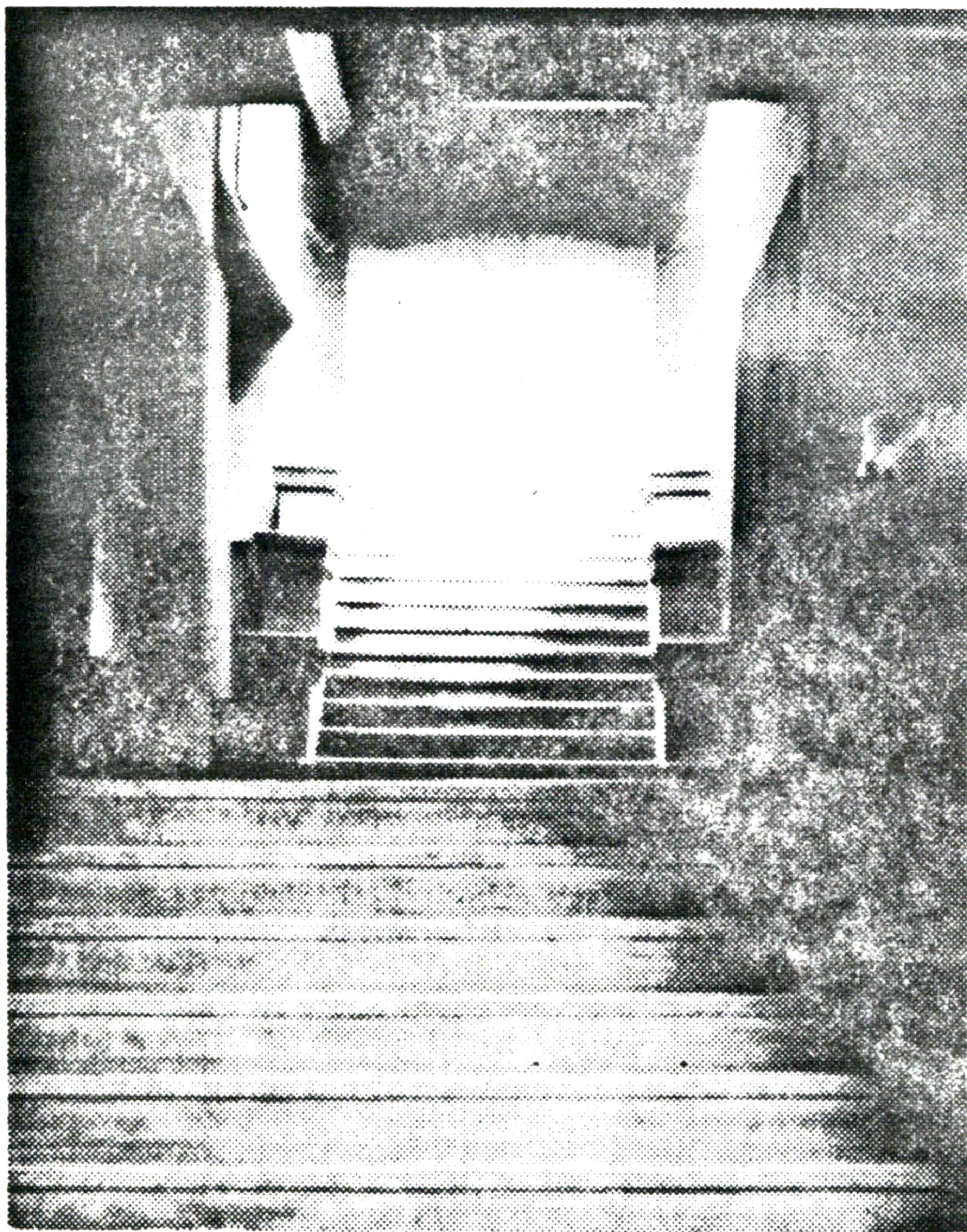
People are phototropic—they tend to move towards light, especially natural light.

When the light is uniform, or the arrangement of light and dark is different from this pattern, the environment is giving information which contradicts its own meaning. The environment can only function in a single-hearted manner, as information, when the lighter spots coincide with the points of maximum impor-

tance, or maximum information, or goals, in the circulation system.

This has the effect of enormously increasing the legibility of the environment—the light and dark function as sources. The arrangement of light and dark provides a prime source of information about the way the environment is to be used.

**Context** Any circulation system.



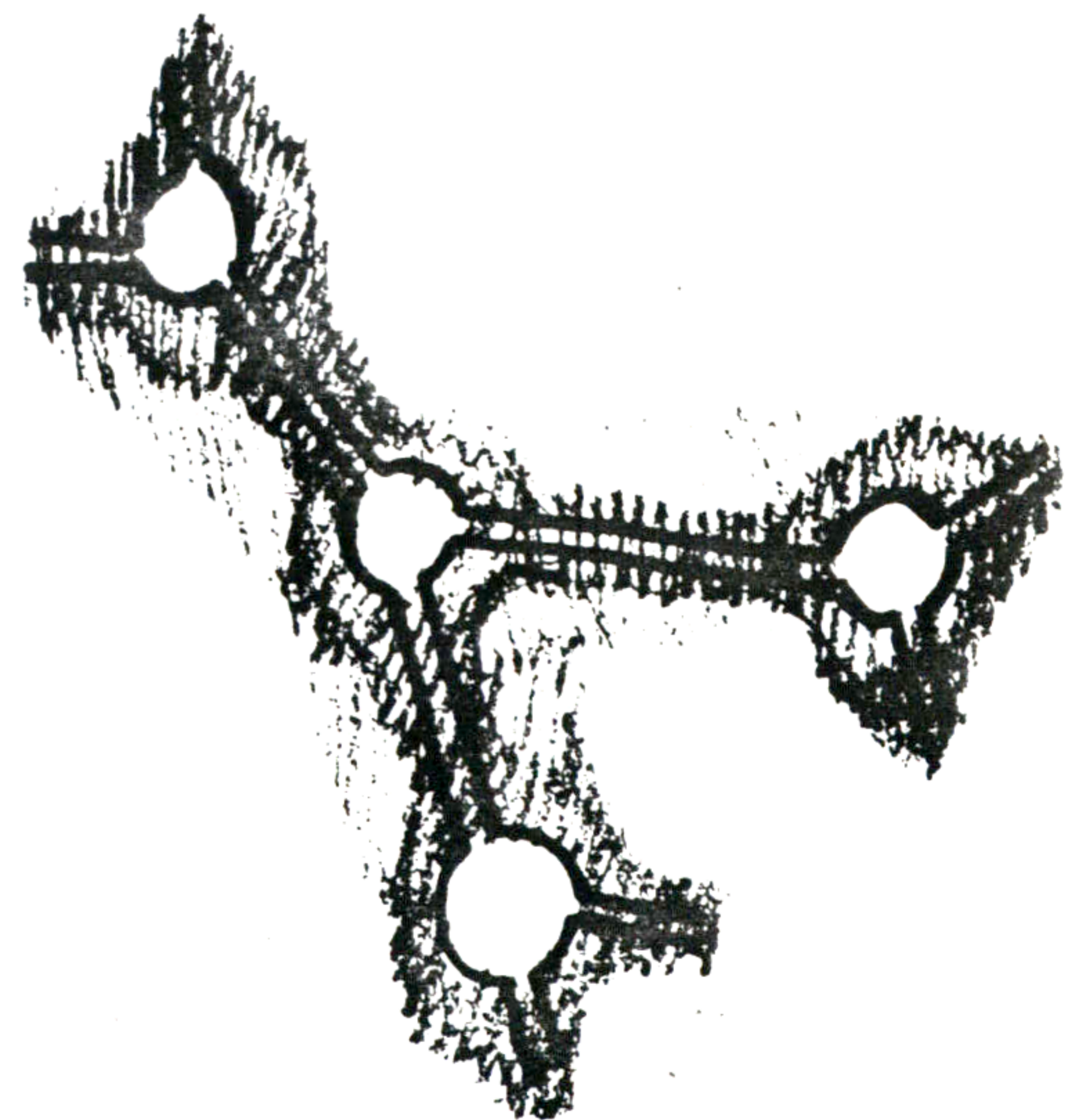
John Galen Howard and William C. Hays, Old Architecture Hall, U.C. Berkeley



Le Corbusier, Flat, 1930

*Therefore:*

*In the circulation system give all the nodes which function as targets for people to walk towards (receptionists, entrances, access points, coffee, information) higher light intensity than the surrounding areas and than the passages between them.*



# *Light is Information*

---

*By: Friedner Wittman.*

*June 1970*

---

*This pattern is tentative. If you have any evidence to support or refute its current formulation, please send it to the Center for Environmental Structure, P.O. Box 5156, Berkeley, California 94705; we will add your comments to the next edition.*