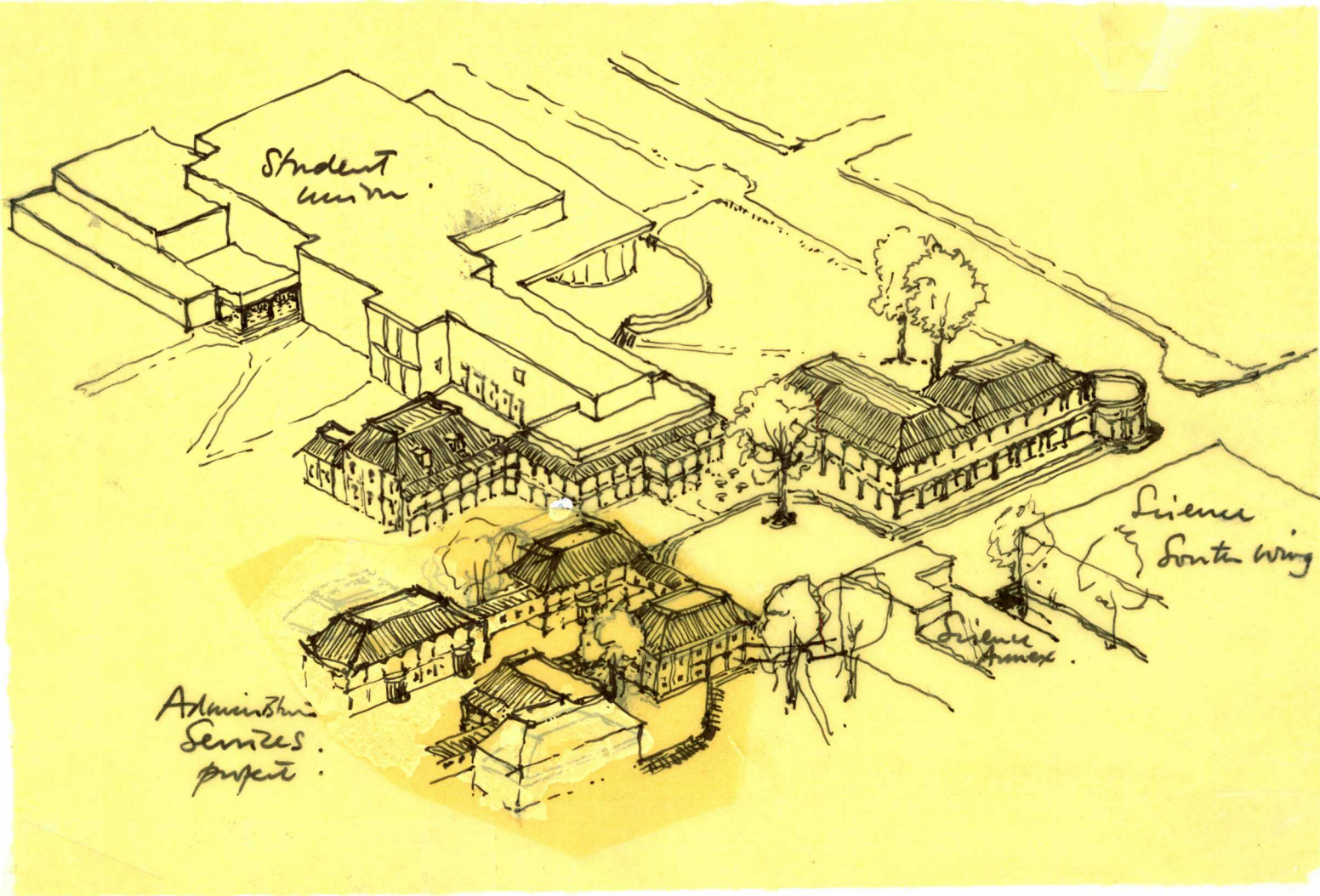


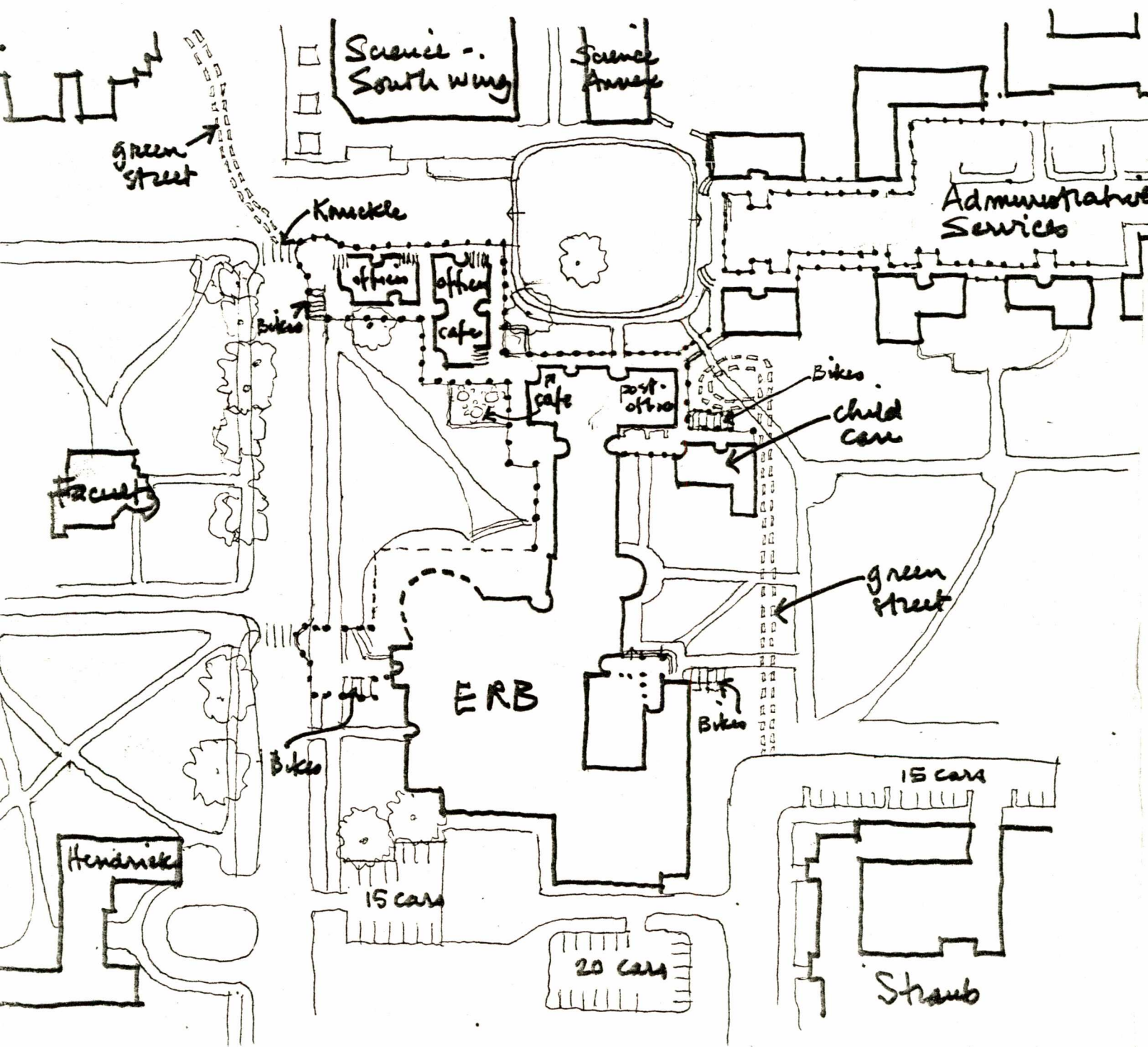
PROPOSAL FOR ADDITION TO ERB MEMORIAL STUDENT UNION



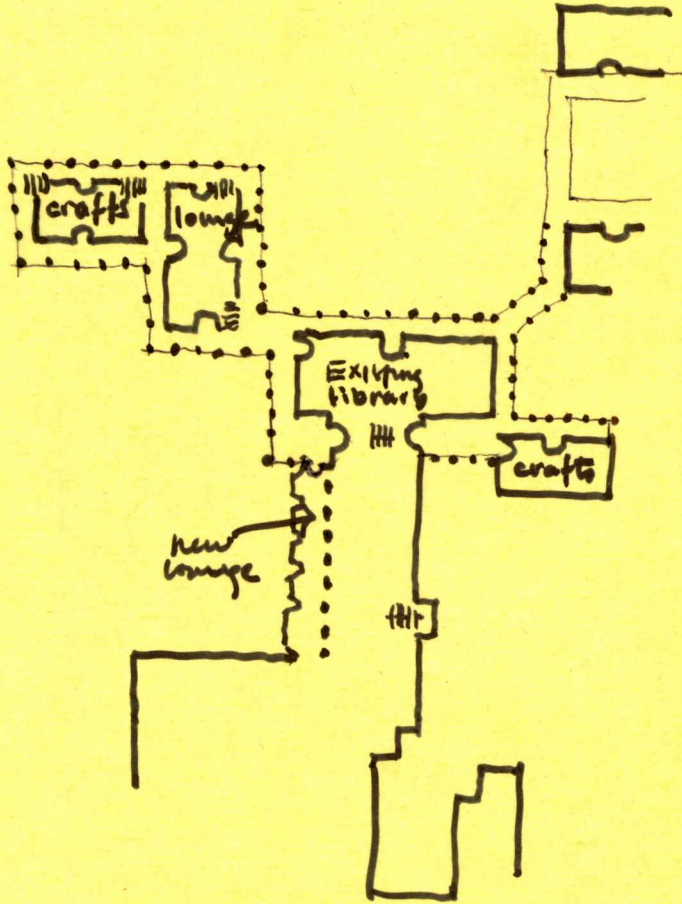
We propose to add approximately 13,000 square feet of offices, child center, craft shop, and assembly/lounge space to the existing student union, and we propose that the additional dining and food service, store, and lounge/exhibit spaces which are presently needed, be spread about on the campus in five satellites, according to the pattern, No Isolated Student Union.

This proposal is intended to be an alternative to the student union addition proposal which is now being considered. This proposal provides the same spaces as called for in the present plan, and essentially rearranges them to conform to the patterns which apply to the project.

FINAL PLAN - GROUND FLOOR



FINAL PLAN - SECOND FLOOR



We now show the evolution of our plan for the Erb Memorial Student Union addition in eight steps, according to the demands of the master plan. The eight steps are:

STUDENT GATHERING

PUBLIC BUILDING

PARKING

LOCAL ROADS

OUTDOOR PLACES

PEDESTRIAN PATHS

BIKE PATHS

ENTRANCES

STUDENT GATHERING

The sketch on this page portrays the impact of the following patterns on the design:

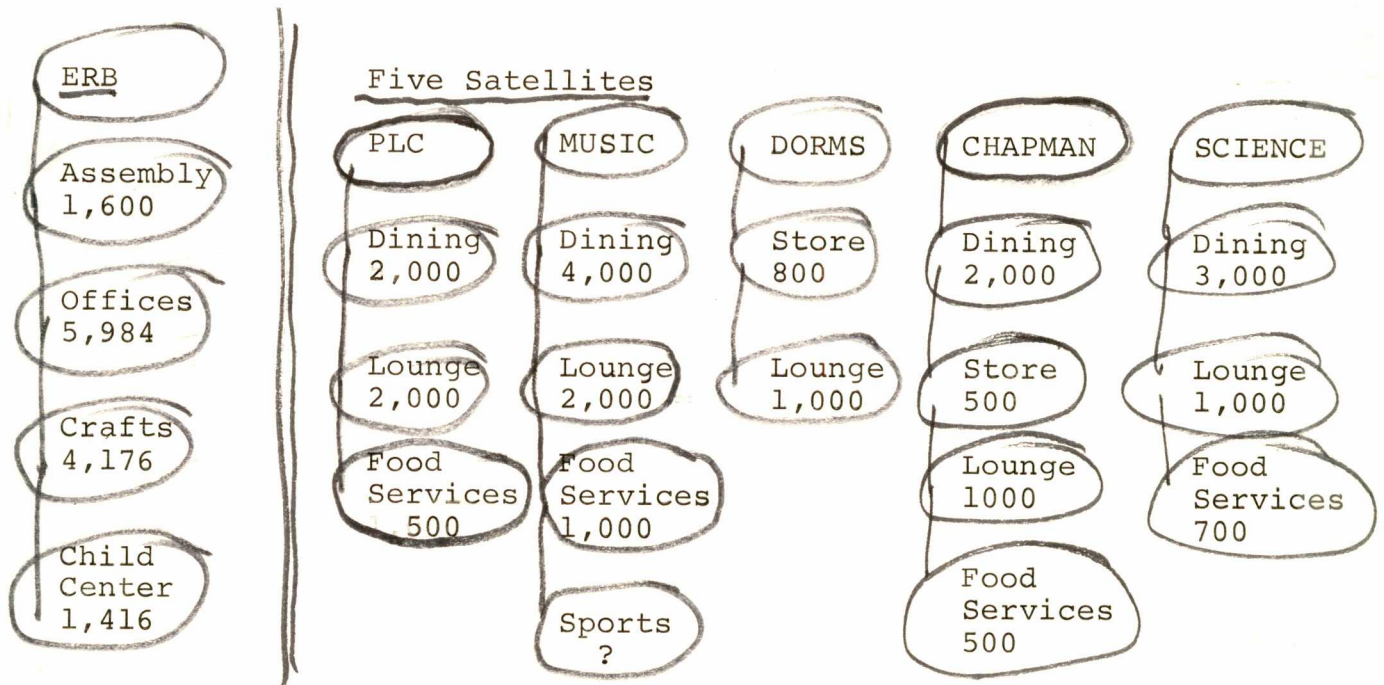
Activity Nuclei

No Isolated Student Union

The present plan for the addition to ERB calls for the following additional spaces:

Dining and Meeting	12,369
Lounges and Exhibit	8,285
Assembly	1,600
Offices	5,984
Craft Shop	4,176
Child Center	1,416
Food Services	2,718
Store	1,354
Miscellaneous	1,940
	<u>39,842 sq.ft.</u>

We propose to split this square footage in the following way:



This proposal discusses only the addition to the main building. See the proposal for the above student union satellites for full discussions on each one of them.

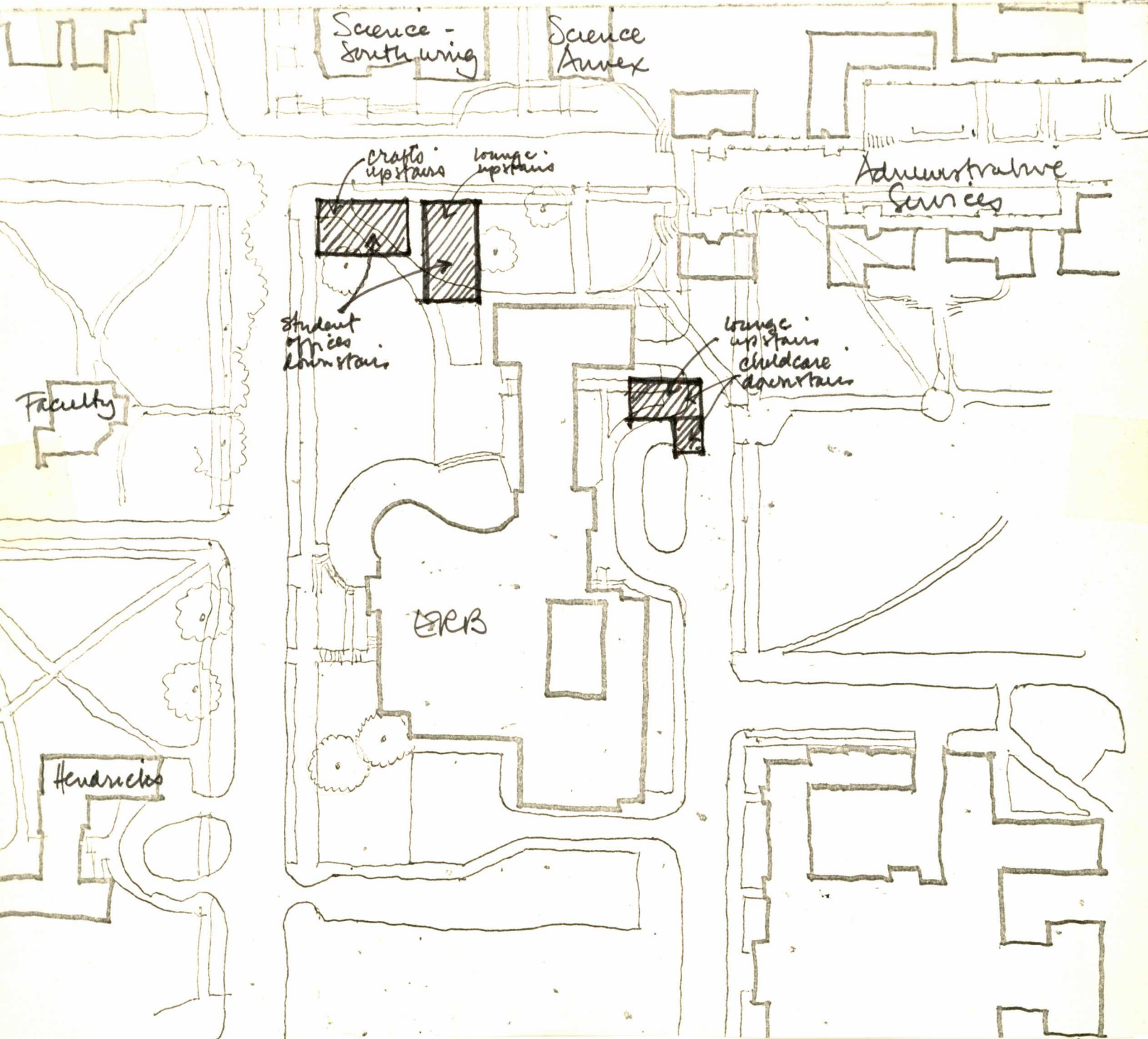
PUBLIC BUILDING

The sketch on this page adds the following patterns to the design:

Human Scale in Public Buildings

Buildings Shaped For Light

Horizontal Office Building



PARKING

The sketch on this page adds the following patterns to the design:

University Parking

Nine Percent Parking

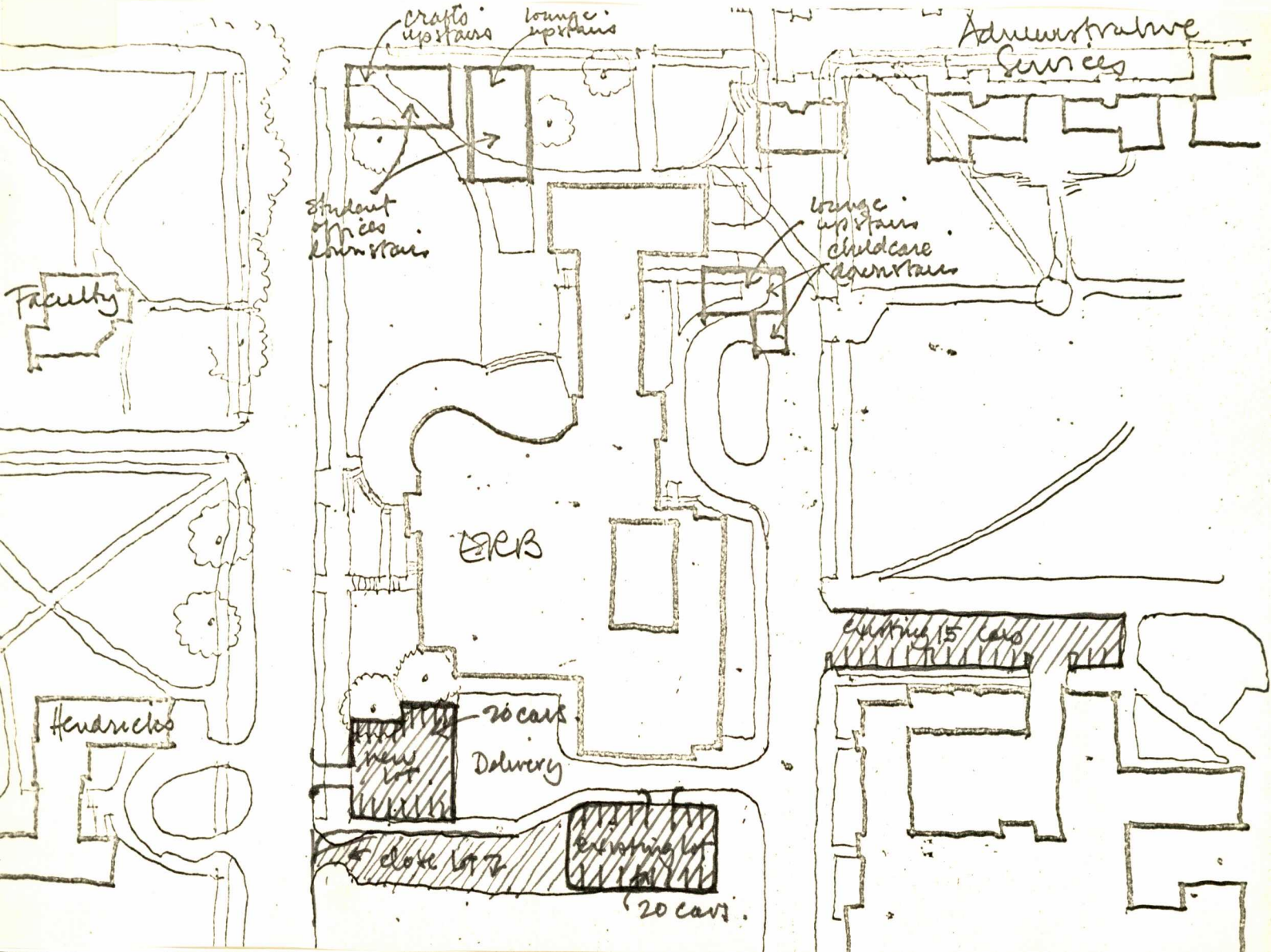
Short term Parking

Tiny Parking Lots

The ERB Memorial Student Union generates the need for approximately:

30 short term parking spaces

10 commuter parking spaces



LOCAL ROADS

The sketch on this page adds the following patterns to the design:

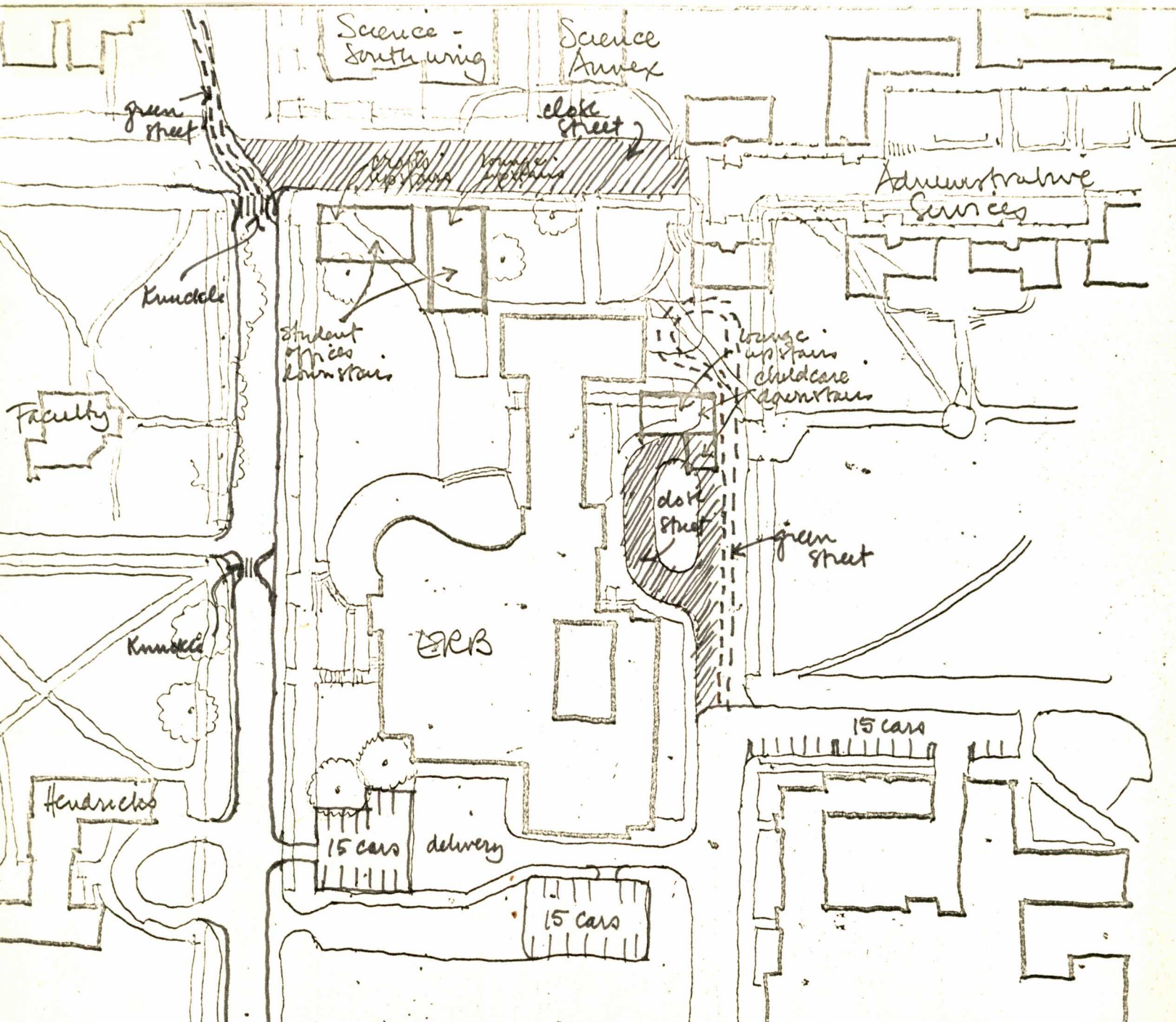
Continuous Crusign Loop

Looped Local Roads

Car-Pedestrian Symbiosis

T.Junctions

Paths Interrupt Roads



OUTDOOR PLACES

The sketch on this page adds the following patterns to the design:

Access to a Green

Convex Connected Outdoor Spaces

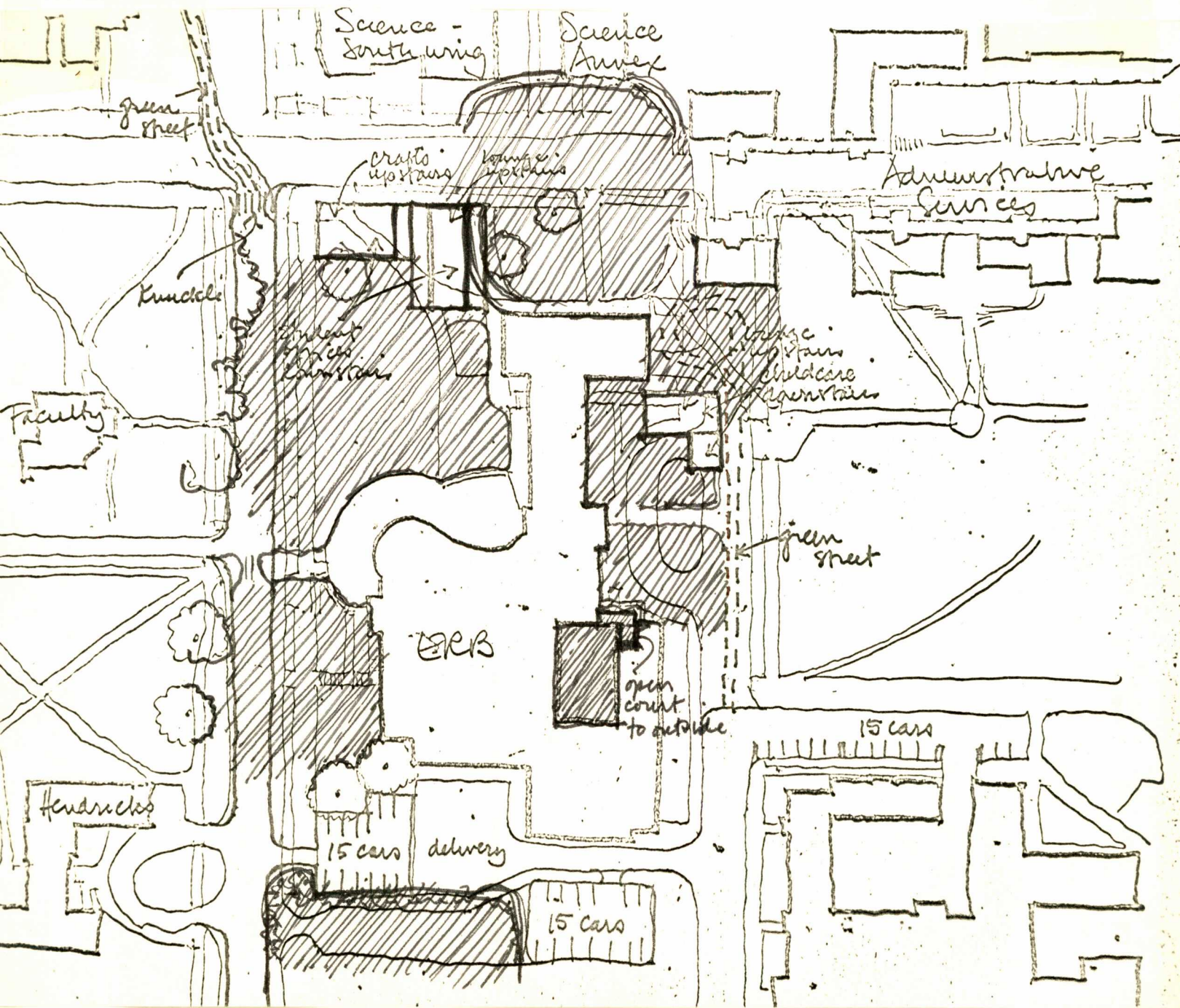
South Facing Open Space

Small Open Spacew

Patios which Live

Trees Must Stay

Places at the Edges of Buildings



PEDESTRIAN PATHS

The sketch on this page adds the following patterns to the design:

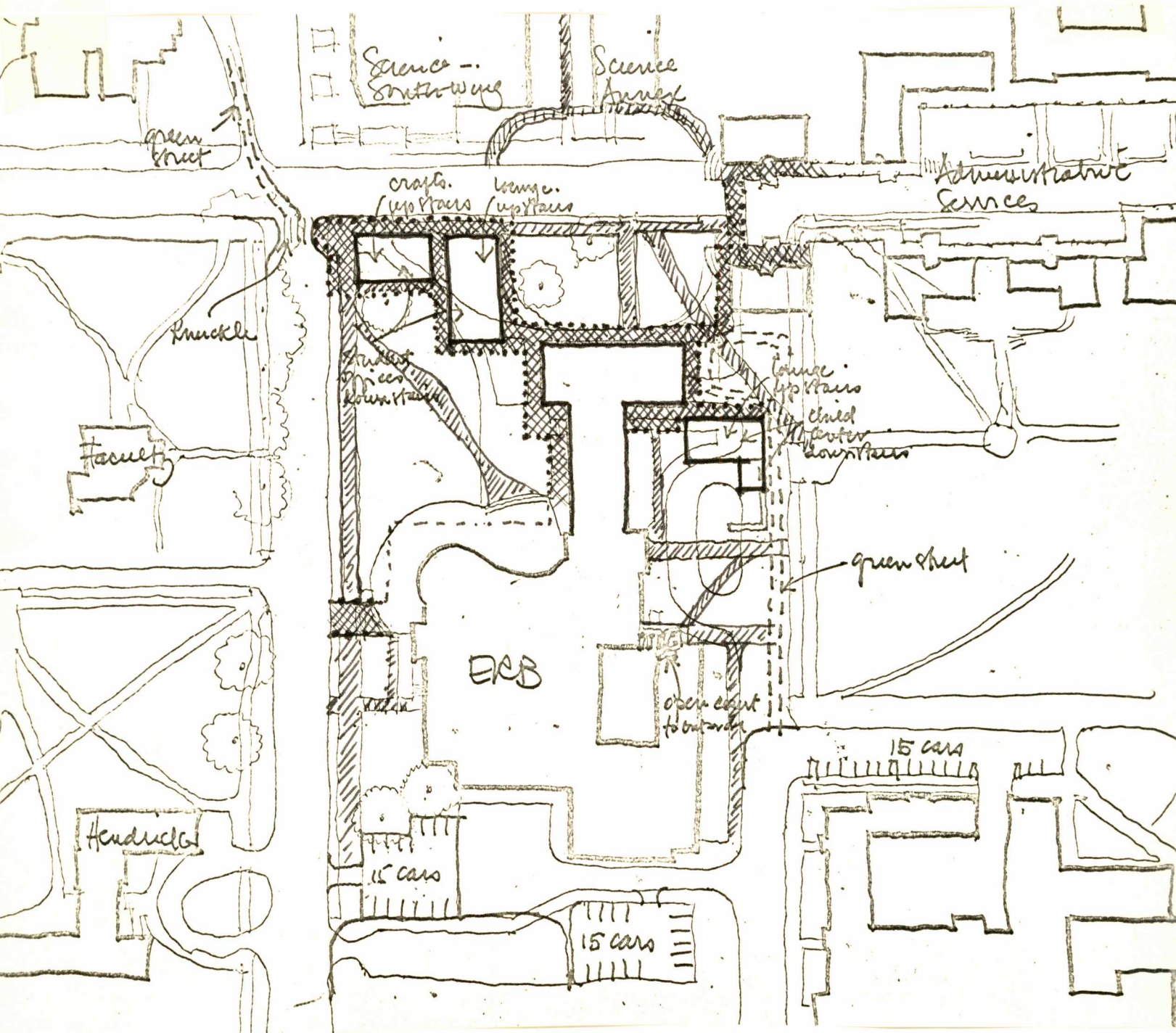
Territorial Ambiguity

University as a Marketplace

Paths Interrupt Roads

Centripetal Pedestrian Paths

Street Lighting



ENTRANCES

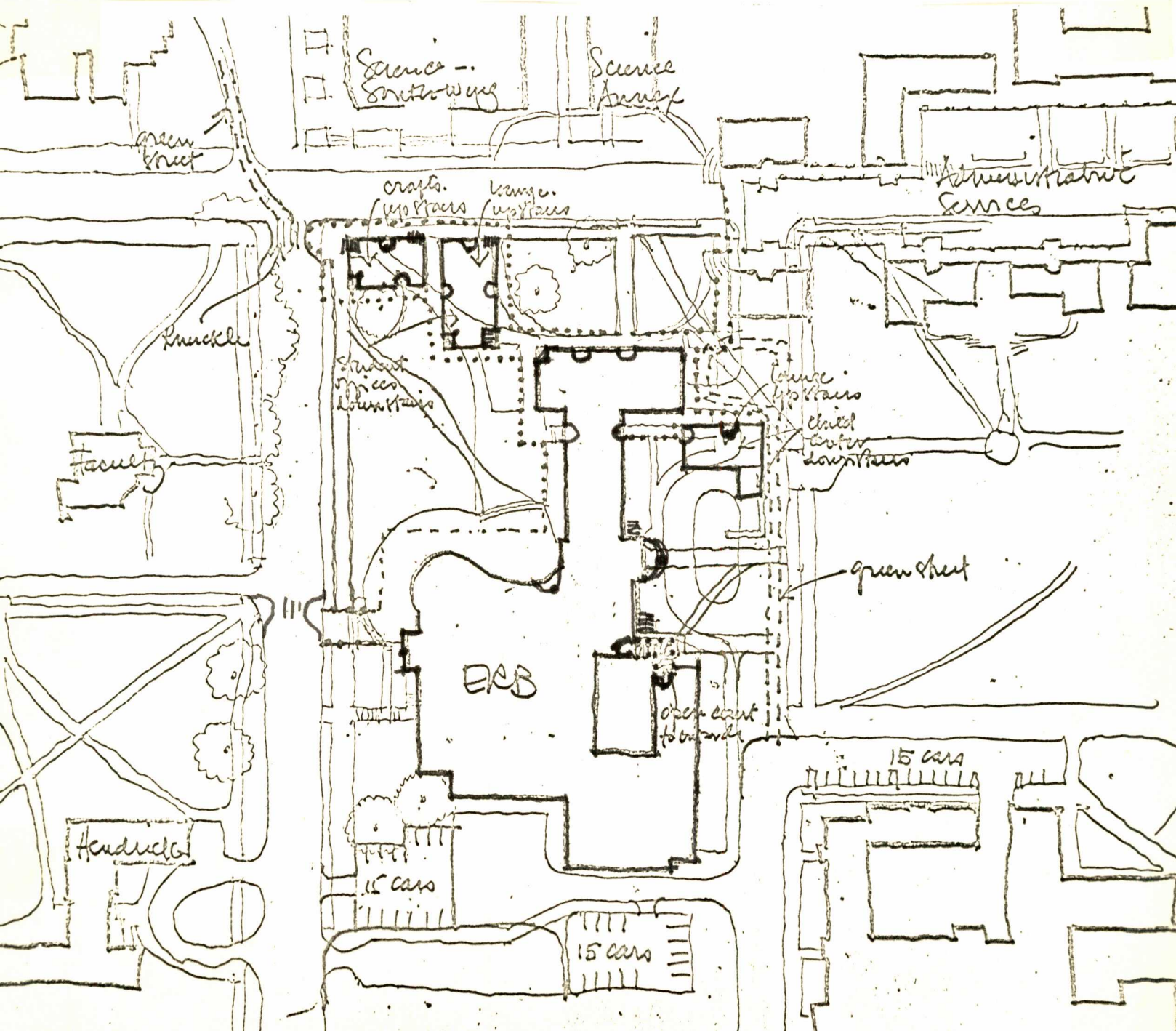
The sketch on this page adds the following patterns to the design:

Entrance Location

Circulation Realms

Territorial Ambiguity

Entrance Shape



BIKE PATHS

The sketch on this page adds the following patterns to the design:
Bike Paths and Racks

