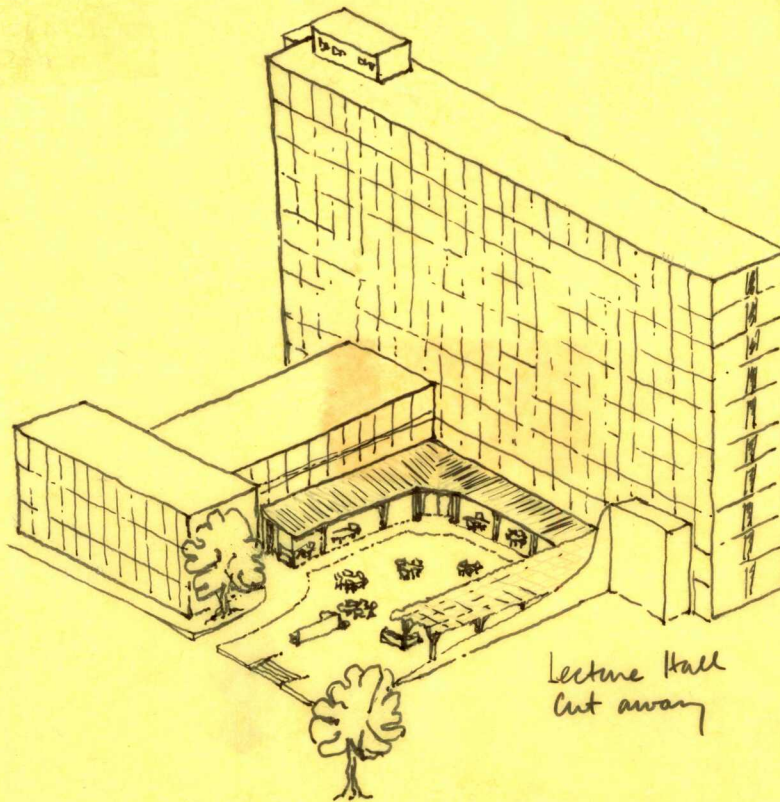


PROPOSAL FOR SATELLITE STUDENT UNION:
PRINCE LUCIEN CAMPBELL HALL

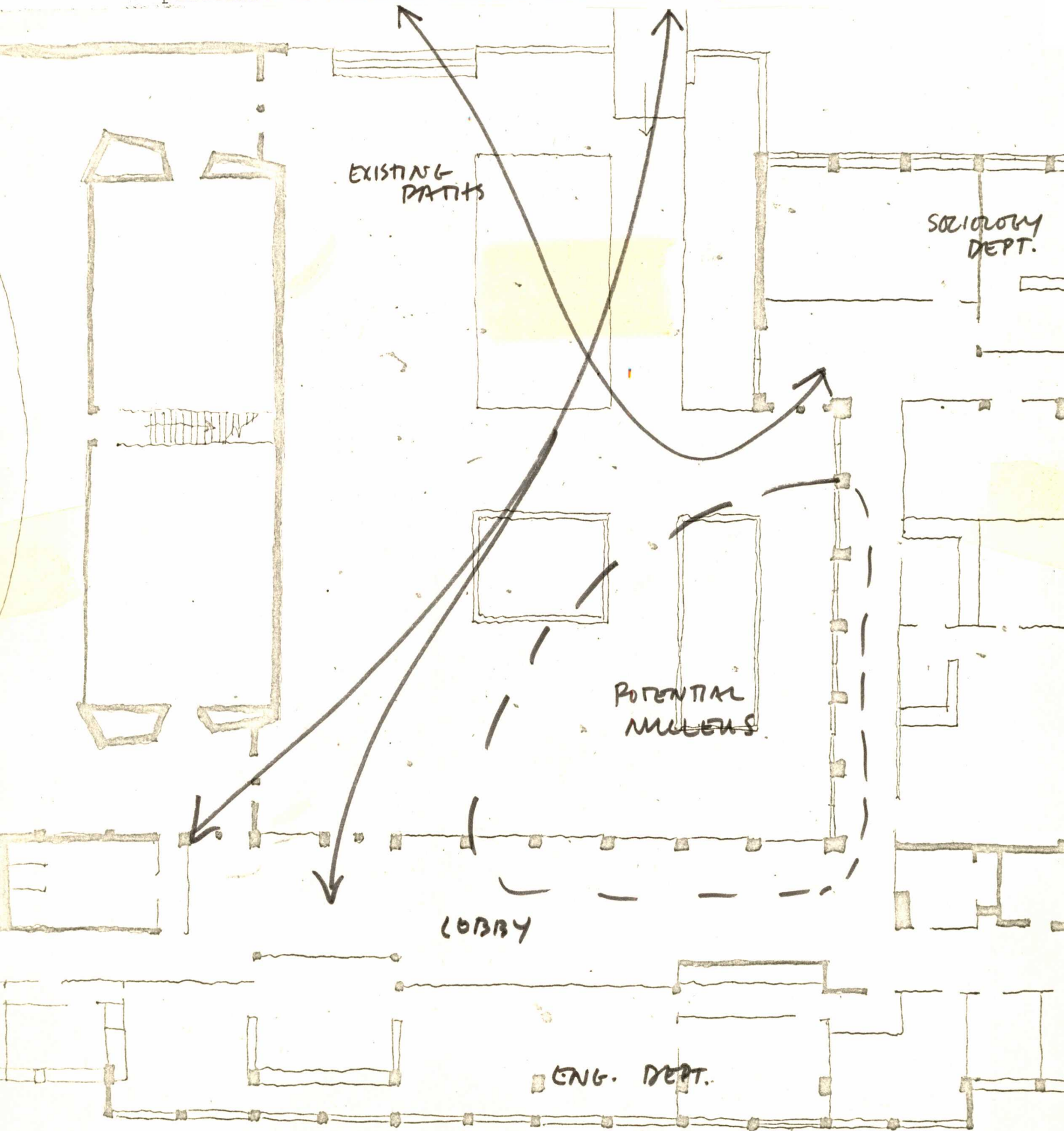


This is a project proposal for a student union satellite in the courtyard and on the first floor of Prince Lucien Campbell Hall. This project is part of the package of five satellites that we are offering as an alternative to the current proposal for additions to Erb Memorial Student Union.

This satellite union creates 4400 net square feet of student union space at a cost of approximately \$27/sq.ft.

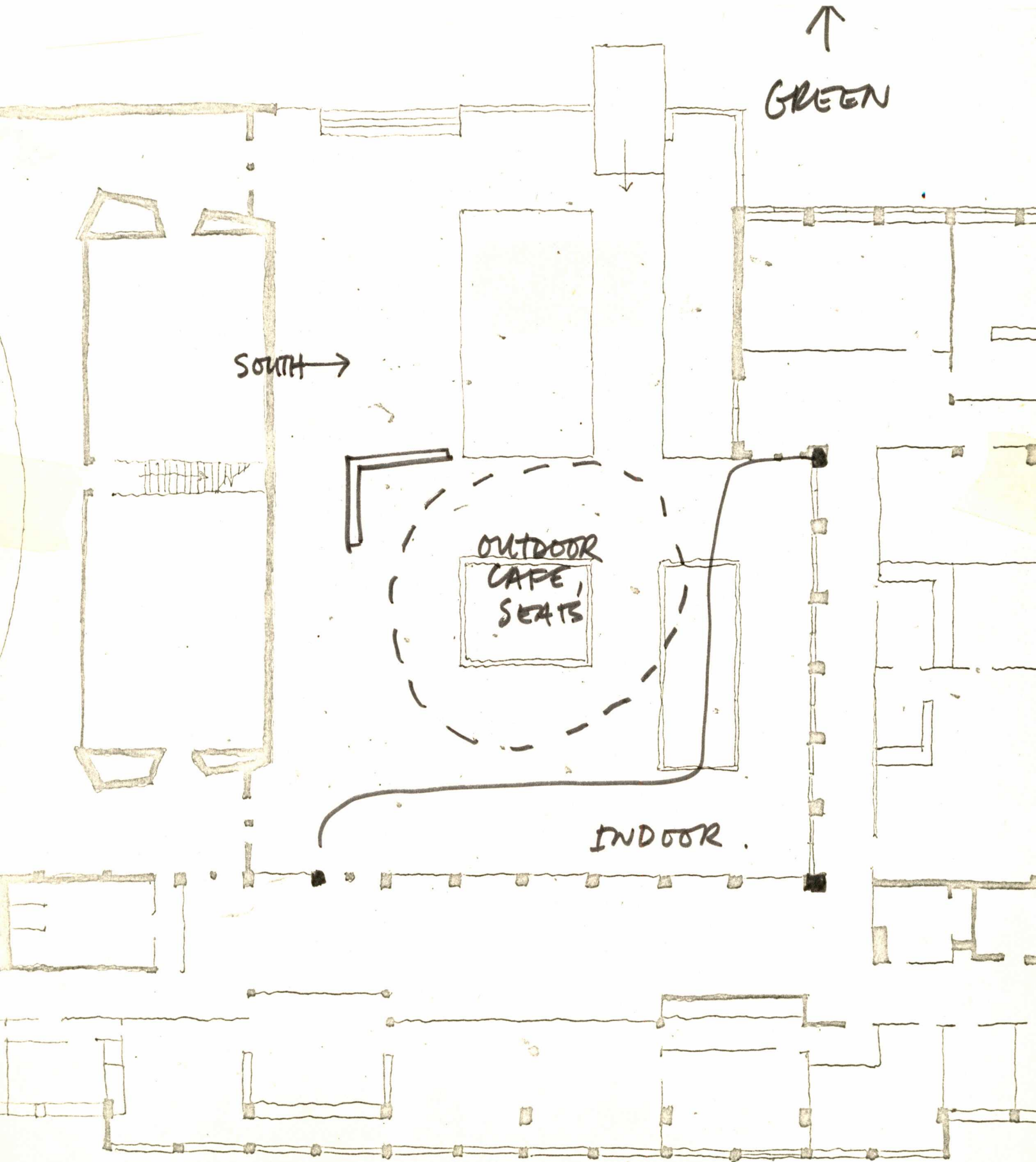
STUDENT GATHERING

The sketch on this page has been generated by the following patterns: No isolated student union; activity nuclei.



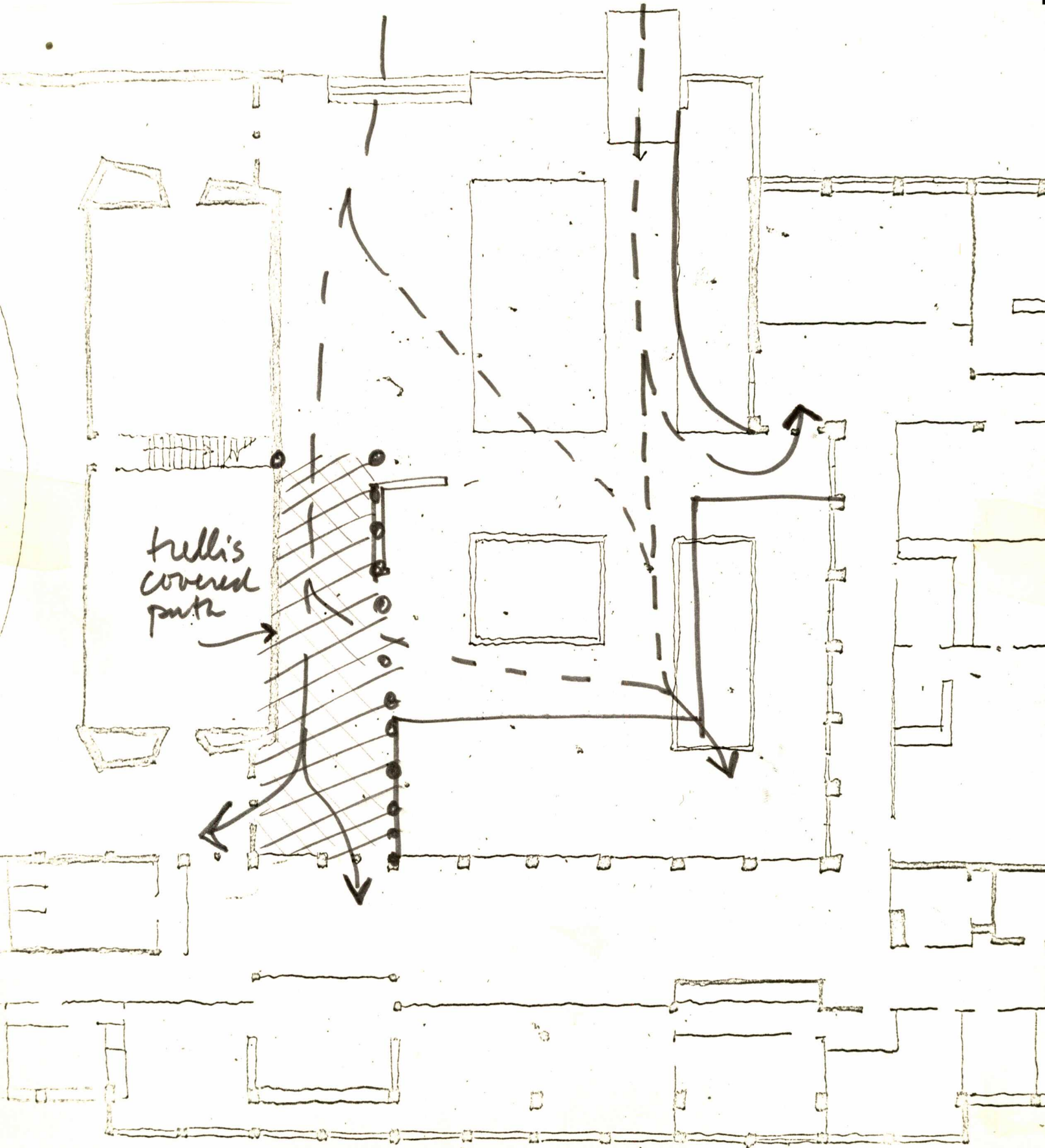
OUTDOOR PLACES

The sketch on this page adds the following patterns to the design: Access to green; South facing open space; Convex connected open space; Places to the edge of buildings.



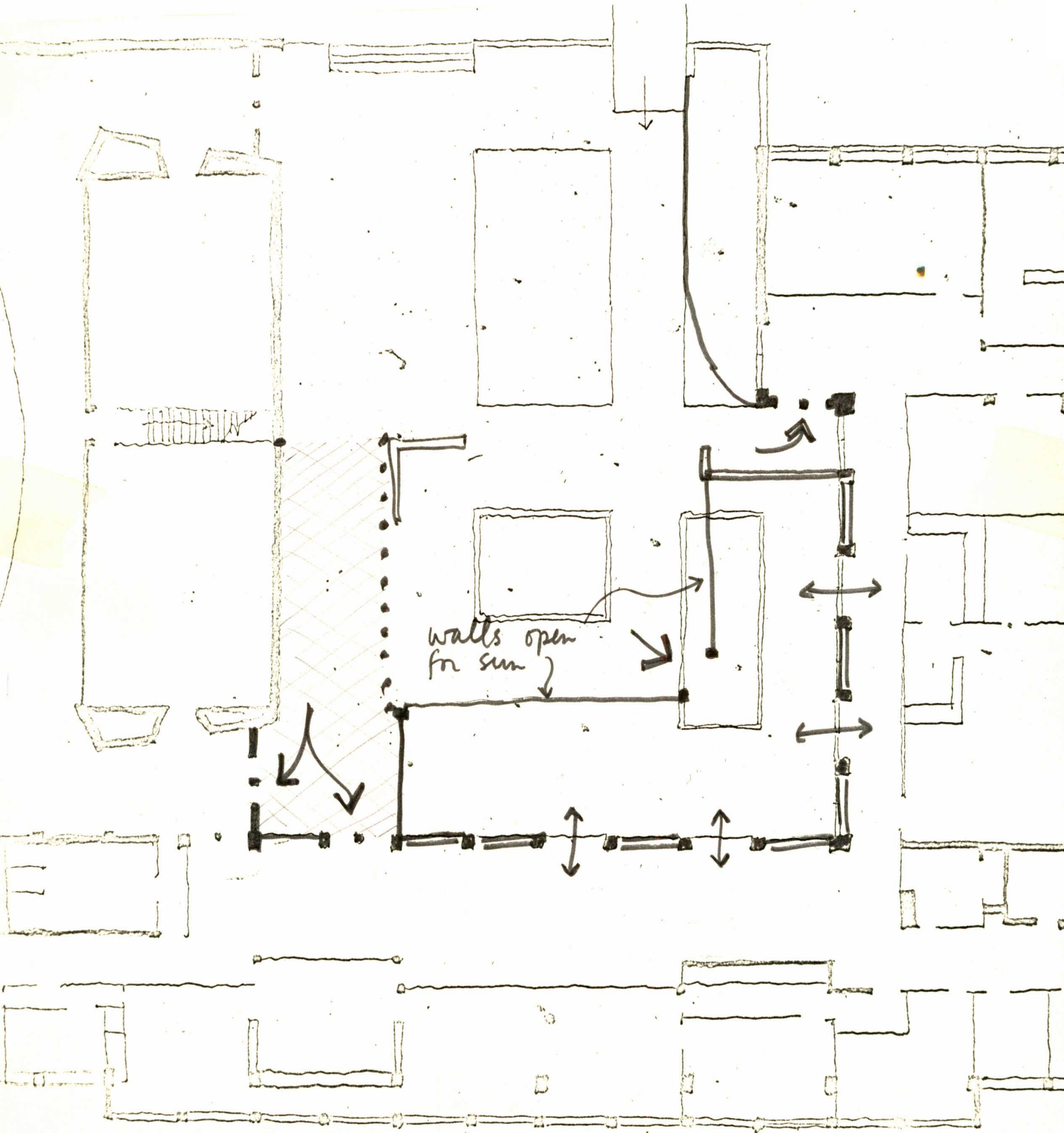
PATHS

The sketch on this page adds the following patterns to the design:
Territorial ambiguity; University as a marketplace; Street
lighting.



ENTRANCES

The sketch on this page adds the following patterns to the design:
Entrance location; Entrance shape; Entrance transition.

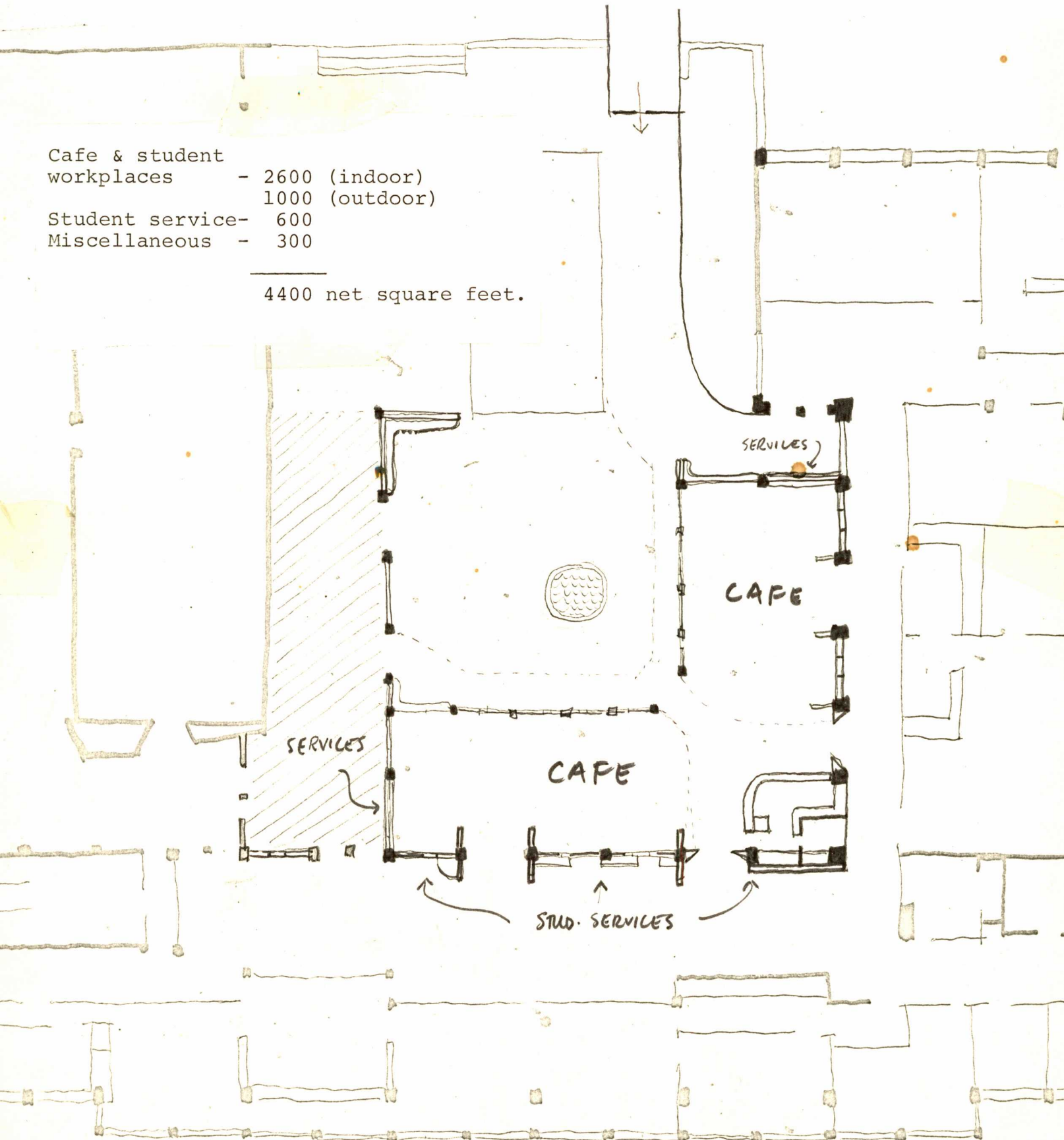


CAFES

The sketch on this page adds the following patterns to the design:
Learning in cafes; Space assignment; Student workplaces.

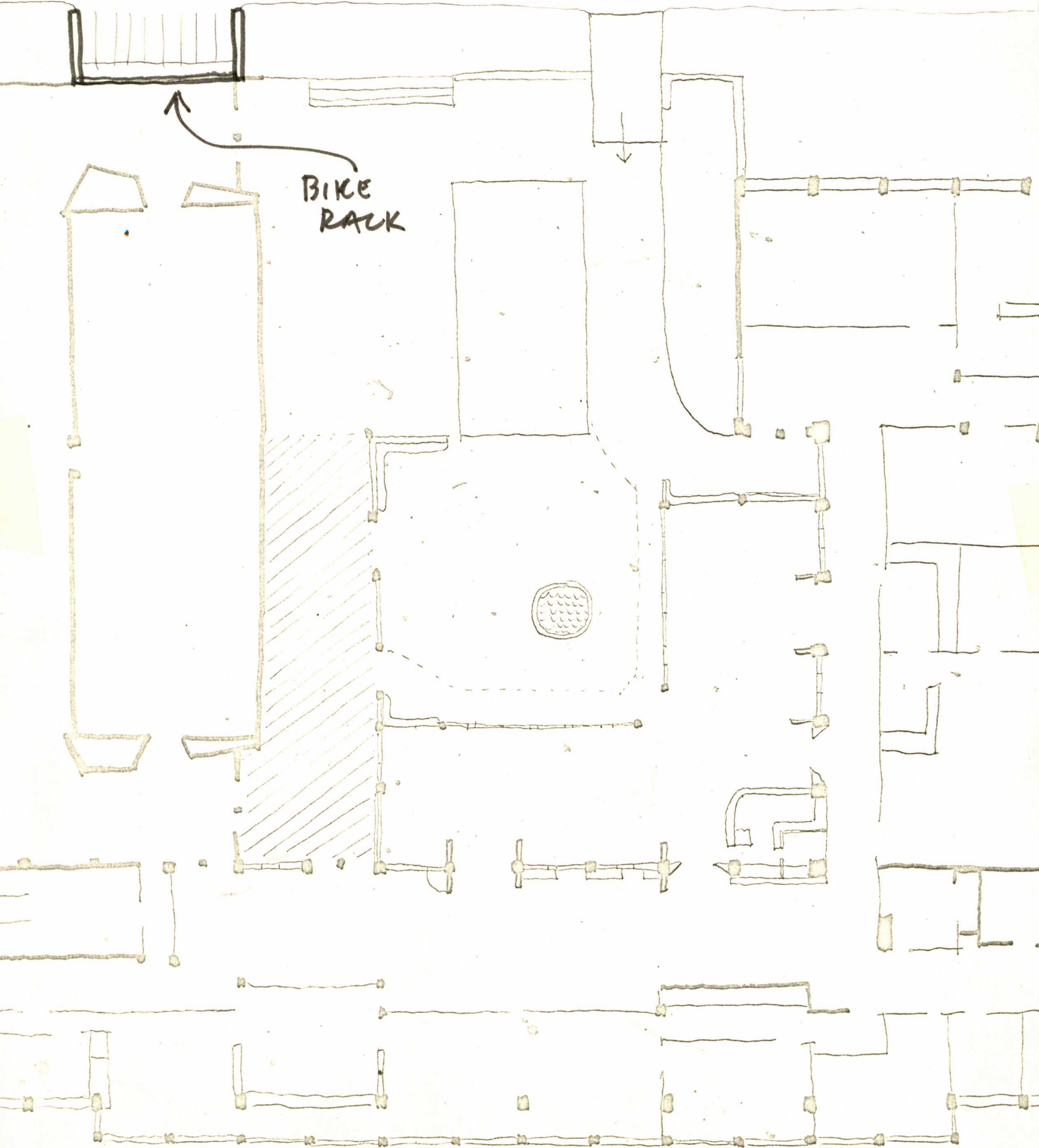
Cafe & student workplaces	- 2600 (indoor)
	1000 (outdoor)
Student service-	600
Miscellaneous -	300

4400 net square feet.



BICYCLE

The sketch on this page adds the following pattern to the design:
Bike racks and paths.



FINAL PLAN

