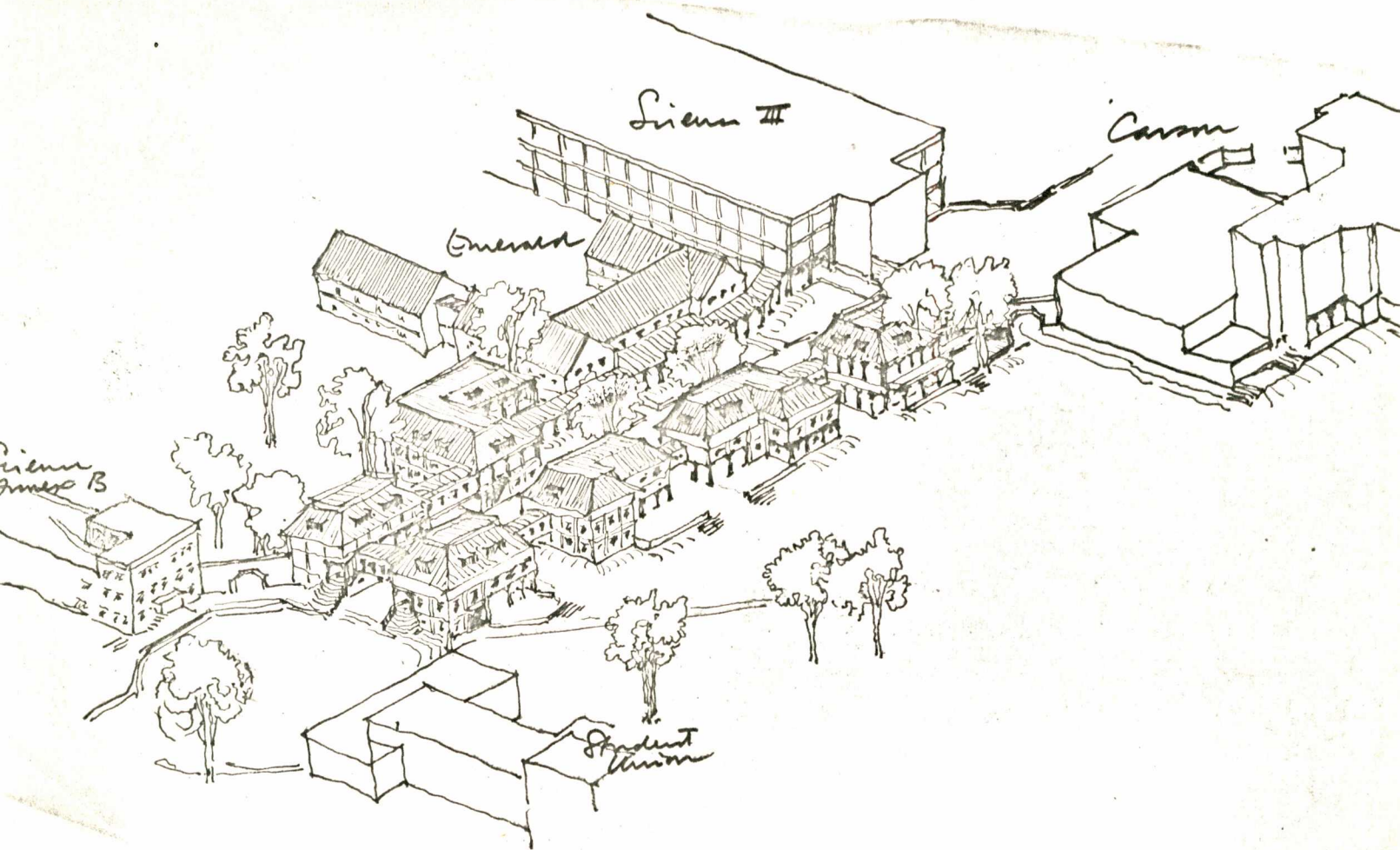


PROPOSAL FOR ADMINISTRATIVE SERVICES BUILDING



We propose to provide six small buildings between Emerald, Carson, Erb and Science Annex B, to house those Administrative Services now in Emerald Hall and some overflow from other buildings. This project is intended as an alternative to the university's current project. Cost and area comparisons are given below.

	Gross area	Unit cost	Total direct construction cost
This proposal	59,200 sq.ft.	\$27	\$1,600,000
Current proposal	69,700 sq.ft.	\$33	\$2,300,000

The two proposals provide for exactly the same functions. However, the current proposal provides extra area for certain functions. Our proposal is based on a strict application of State Board standards to all areas covered by those standards. Our proposal also has a lower unit cost because of differences in construction (See discussion under Education project).

We now show the evolution of our plan for Administrative services, in ten steps, according to the demands of the master plan. The ten steps are:

ADMINISTRATION

PUBLIC BUILDING

PARKING

LOCAL ROADS

OUTDOOR PLACES

PEDESTRIAN PATHS

ENTRANCES

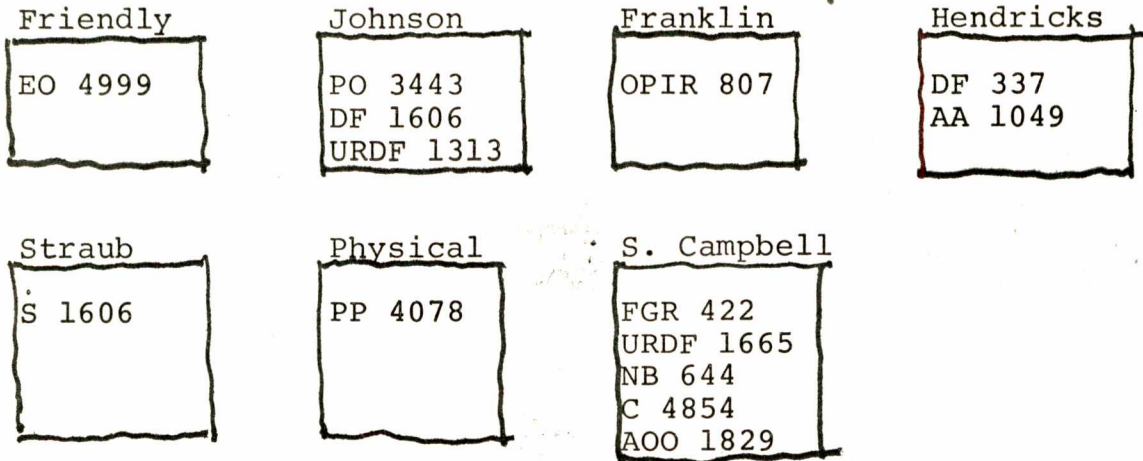
BIKE PATHS

STUDENT GATHERING

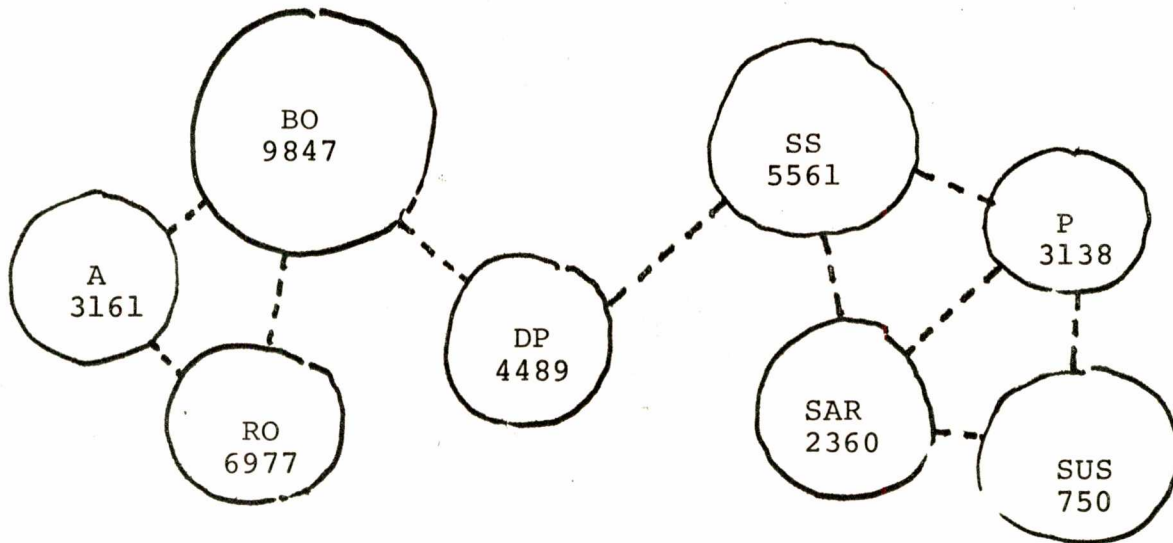
CAFES AND SHOPS

ADMINISTRATION

The sketch on this page portrays the impact of the following patterns on the design: Administration Decentralized; Small Services without Red Tape; Proximity Analysis; Departmental Space Standards.



These services stay in the buildings where they are now located.



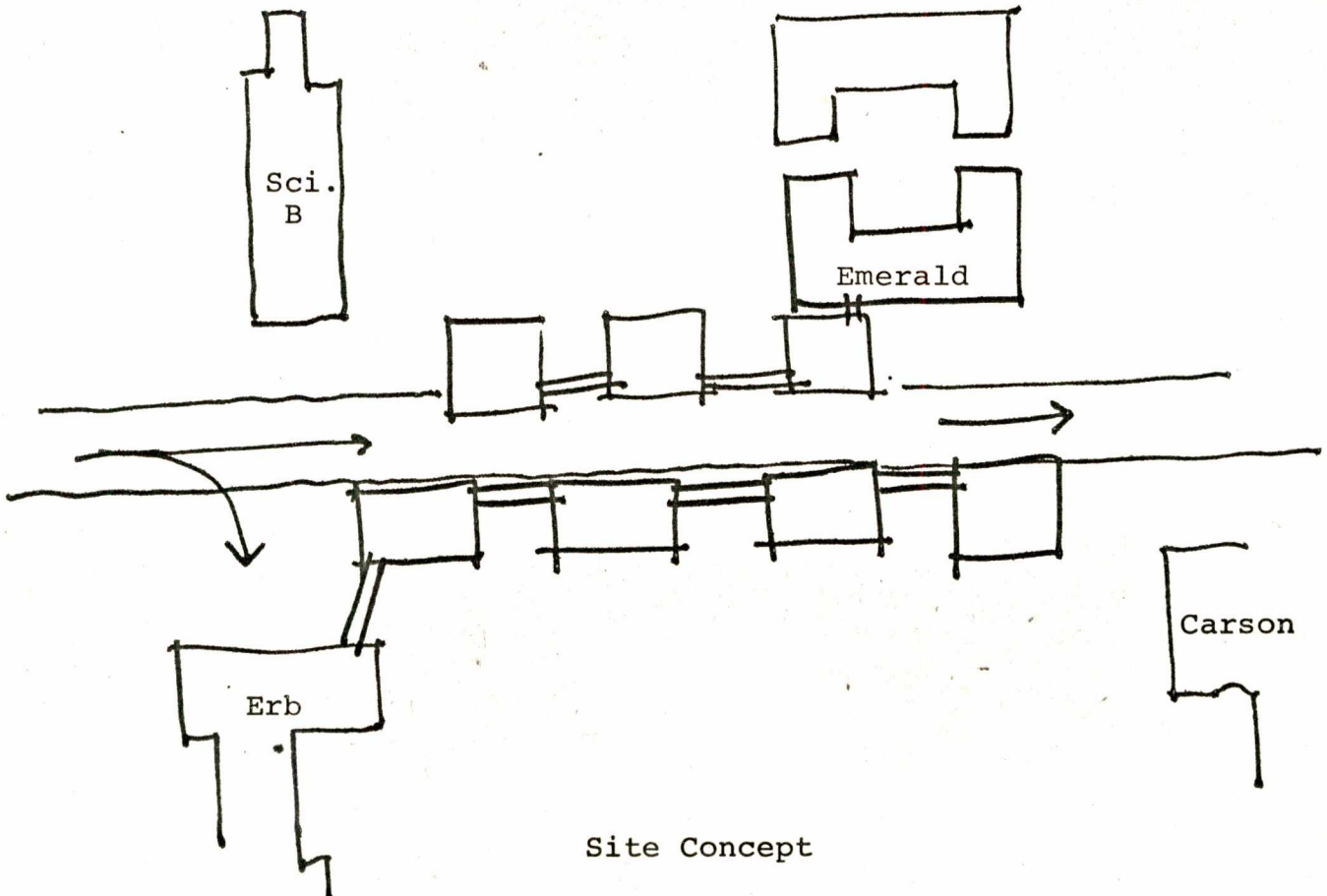
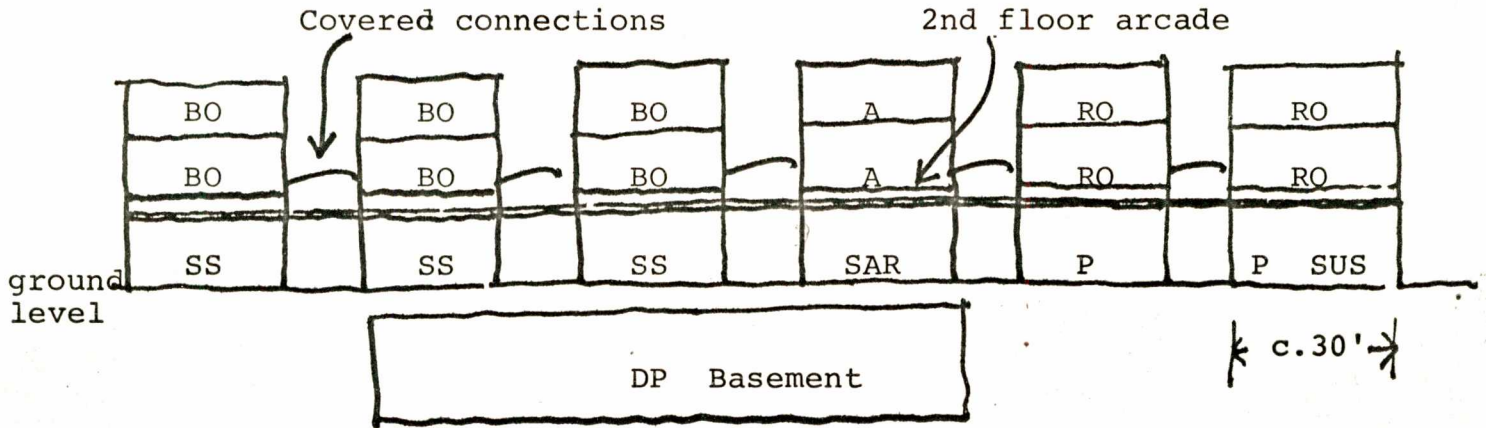
These services require new space. The adjacencies in this diagram are essentially taken from the notes of Don Rhodes, Dean of Administrative Services.

All figures shown represent net square feet.

- | | | |
|-----------------------|-------------------------|------------------------|
| A-Admissions | DP-Data Processing | PB-Phys.Plant |
| AA-Academic Advising | EO-Education Office | S-Security |
| AOO-Alumni Old Oregon | FGR-Fed.Gov't.Relation | SAR-Stud.Aff.Res. |
| BO-Business Office | NB-News Bureau | SS-Stud.Services |
| C-Counseling | OPIR-Off.Plan.Int. Res. | SUS-Support Serv. |
| DF-Dean of Faculty | P-Placement | URDF-Univ.Rel.Dev.Fund |
| | | RO-Registrar's Off. |

PUBLIC BUILDING

The sketch on this page adds the following patterns to the design:
Human Scale in Public Buildings; Buildings Shaped for Light;
Horizontal Office Buildings.

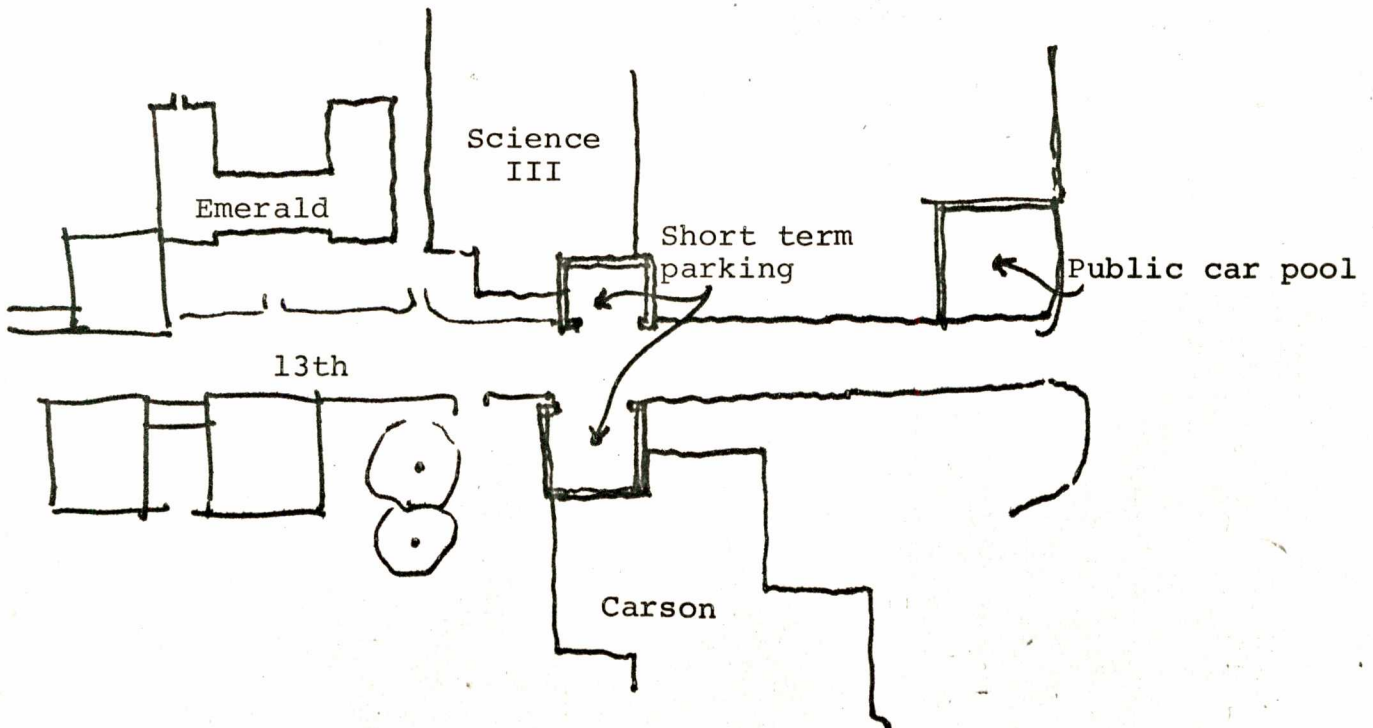


PARKING

The sketch on this page adds the following patterns to the design: University parking; Nine percent parking; Short term parking; Tiny parking lots.

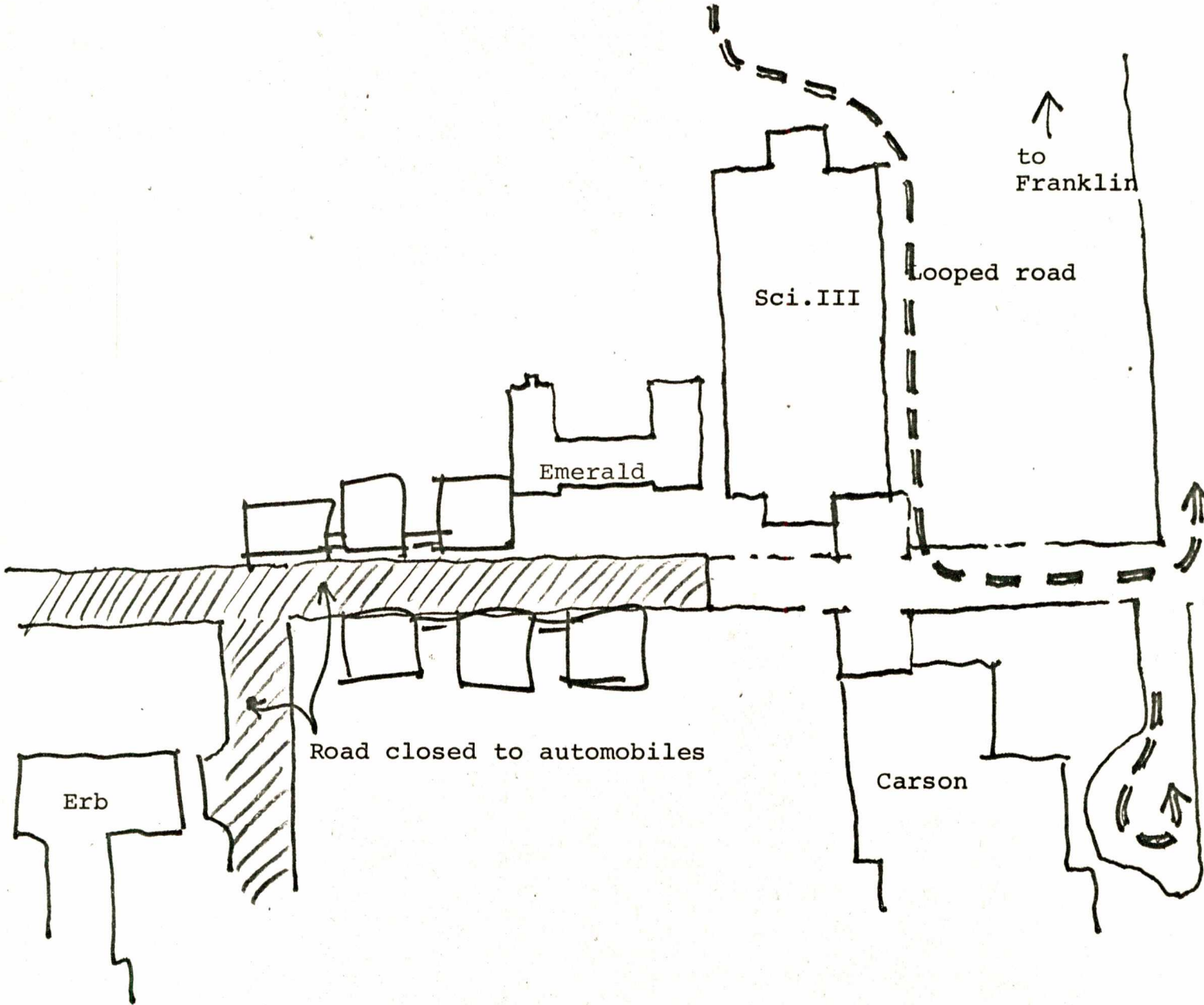
The Administration complex generates the need for approximately 21 Short term parking spaces, and 135 Commuter parking spaces.

For the short term spaces we provide two small parking lots along 13th Street, east of Science III. For the commute parking we make two simultaneous provisions. First, to cut back on the need for commuter parking, we provide a pool of thirty pay-as-you-go campus cars, for use in this part of the campus. These cars are available to faculty and staff who either walk, bike, take the bus, or come to the campus in car pools, and who require cars during the day for short local trips around the campus and the town. We propose this as an experimental program. If it works to reduce the demand for commuter parking, we shall suggest the use of such pools in other parts of the campus. Meanwhile, as a second and transitional provision, we shall use the parking lot north of Student Health Services, and the Columbia Street lot, for Administration commuter parking.



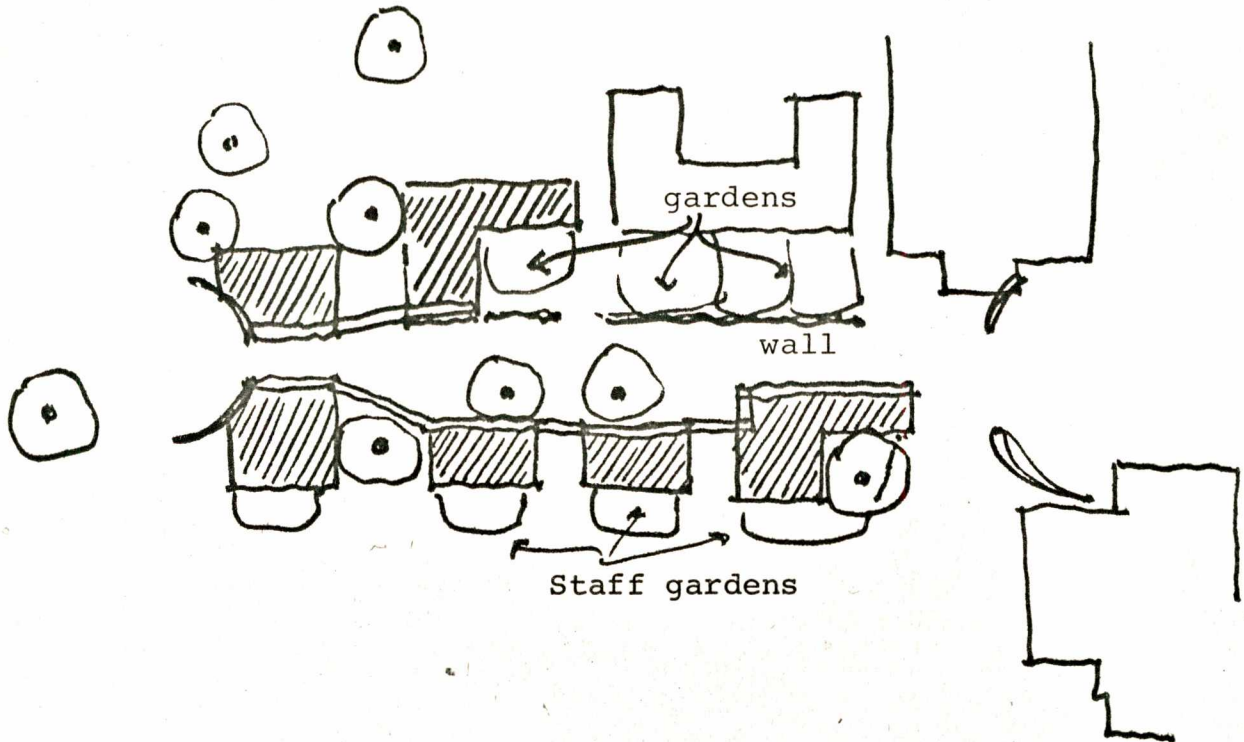
LOCAL ROADS

The sketch on this page adds the following patterns to the design:
Continuous cruising loop; Looped local roads; Car-pedestrian symbiosis;
T-junctions; Paths interrupt roads.



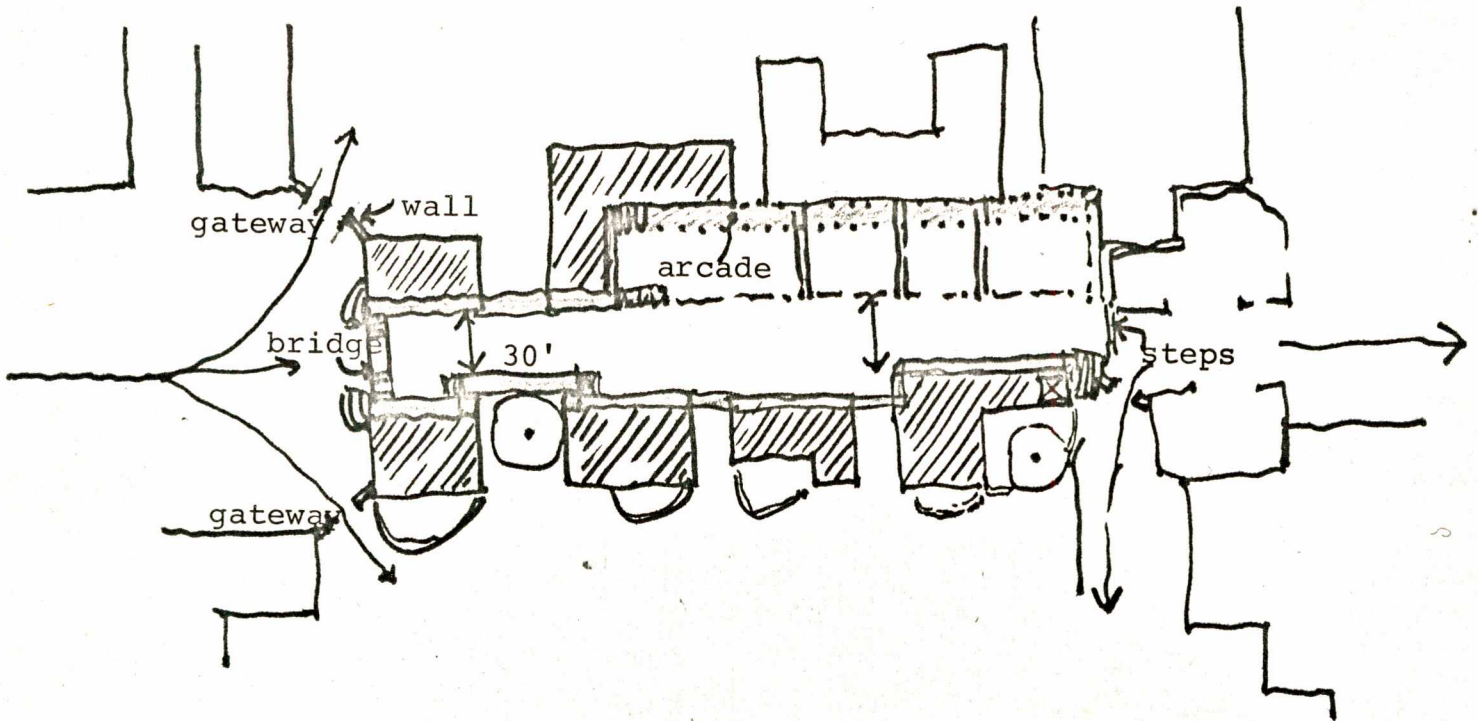
OUTDOOR PLACES

The sketch on this page adds the following patterns to the design:
Access to a green; Convex connected outdoor spaces; South facing open space; Small open spaces; Patios which live; Trees must stay; Places at the edge of buildings.



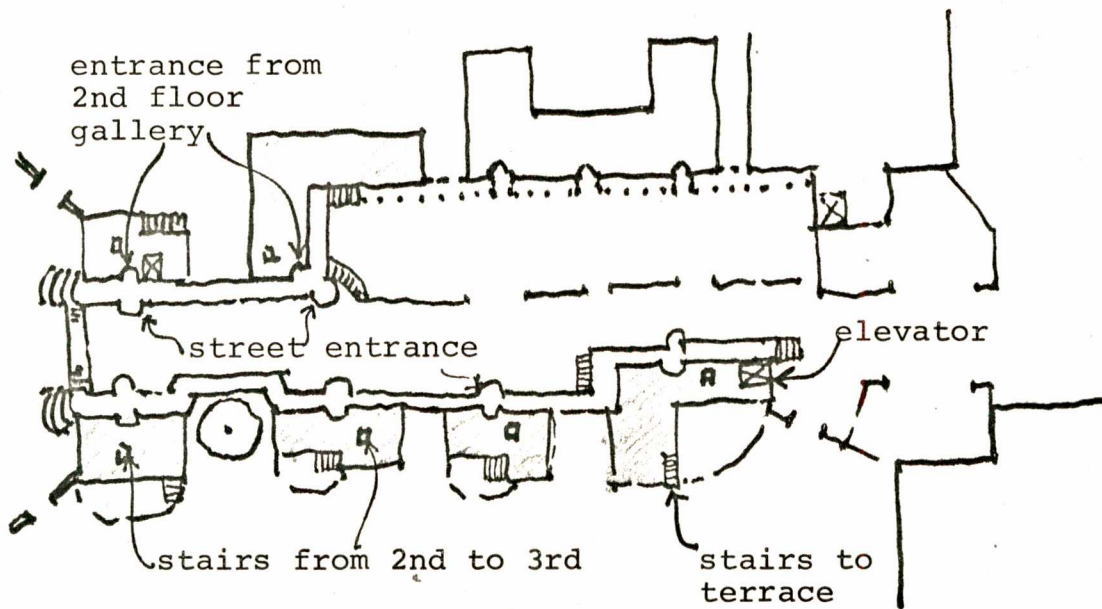
PEDESTRIAN PATHS

The sketch on this page adds the following patterns to the design:
Territorial ambiguity; University as a marketplace; Paths interrupt roads; Centripetal pedestrian paths; Street lighting.



ENTRANCES

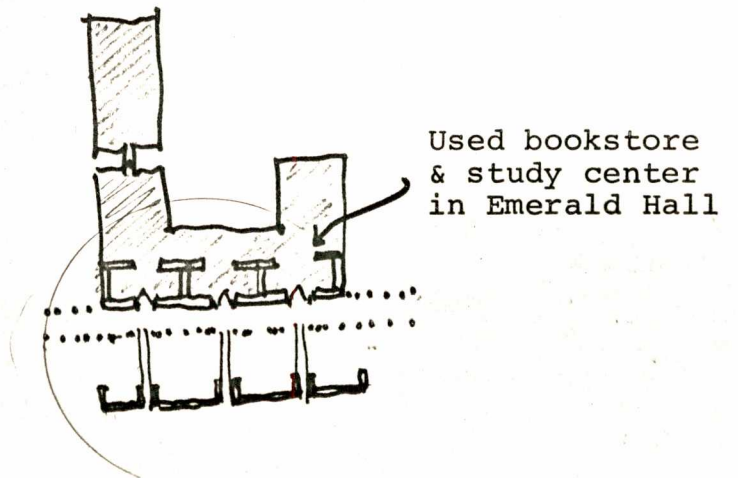
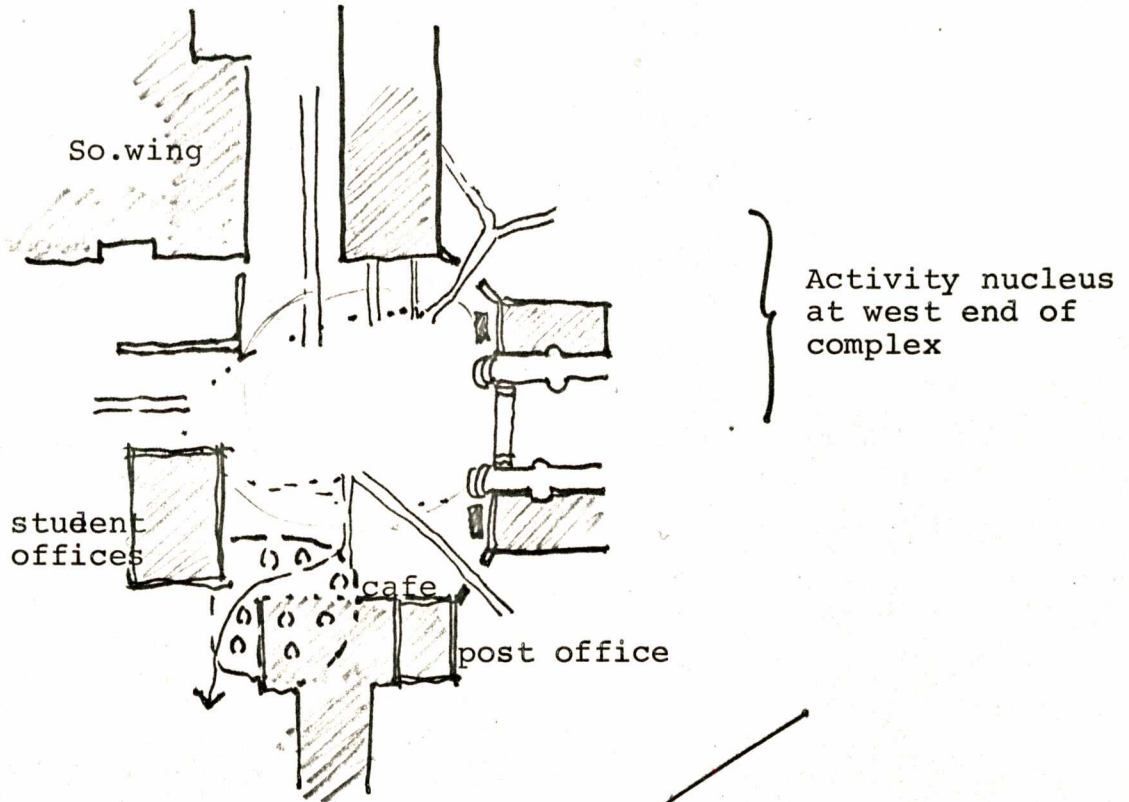
The sketch on this page adds the following patterns to the design: Entrance location; Circulation realms; Territorial ambiguity; Entrance shape.



Street entrances set forward; entrances on the 2nd floor gallery are recessed.

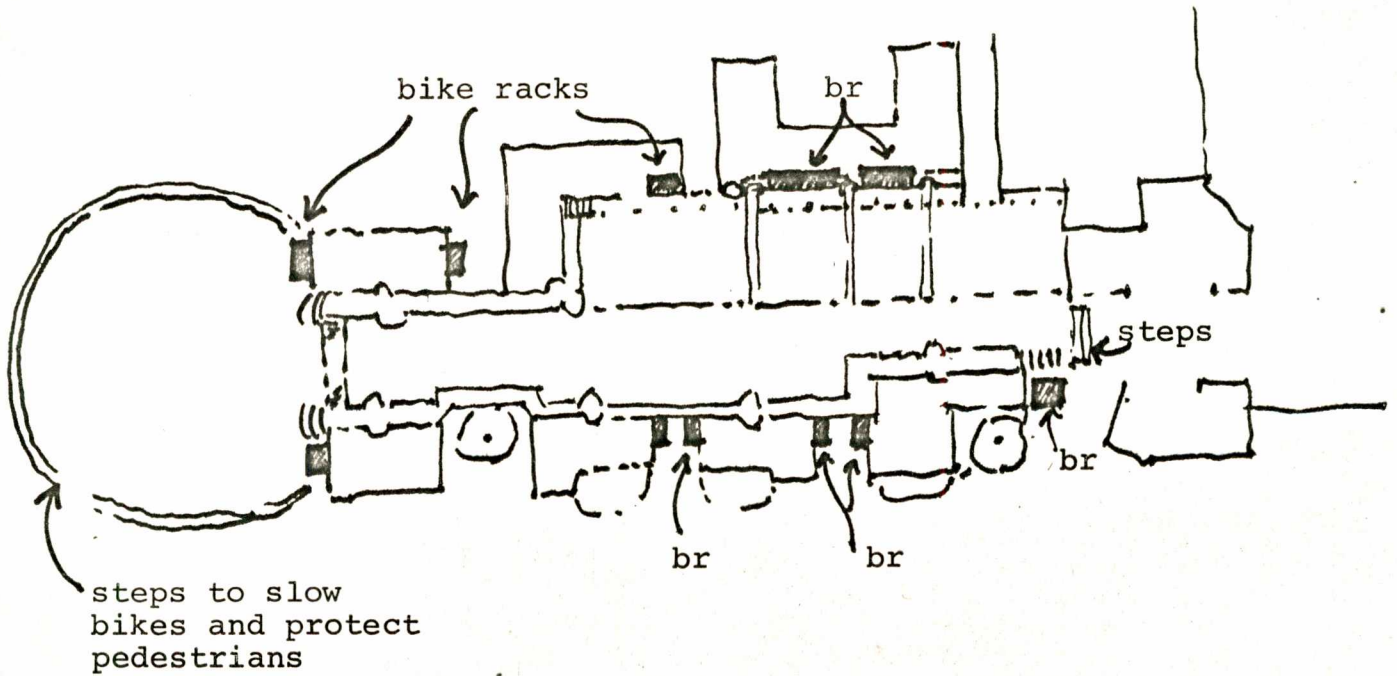
STUDENT GATHERING

The sketch on this page adds the following patterns to the design:
No isolated student union; Activity nuclei; and CAFES AND SHOPS:
Town integrated with university; Learning in cafes.



BIKE PATHS

The sketch on this page adds the following pattern to the design:
Bike paths and racks.



FINAL PLAN

