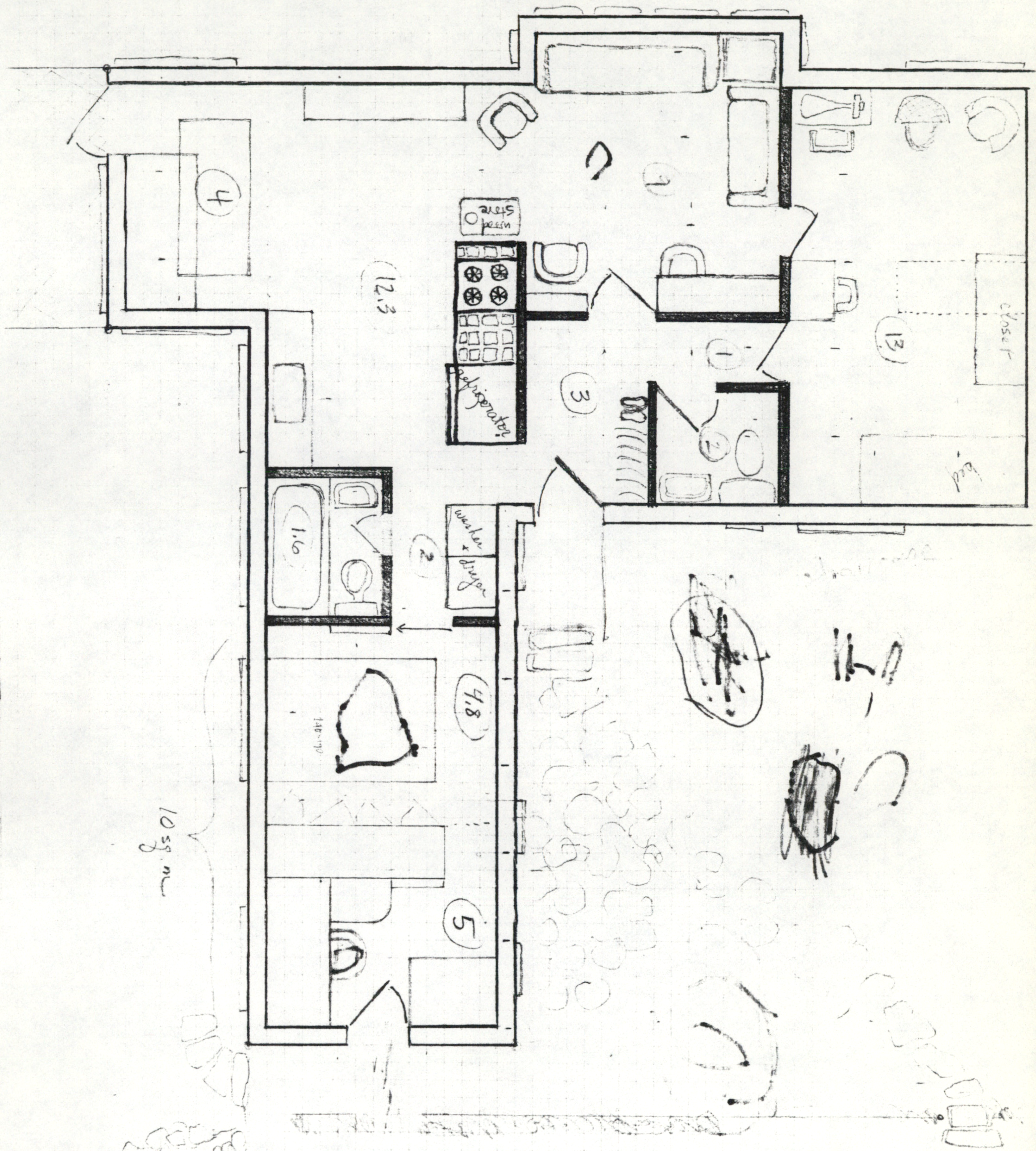
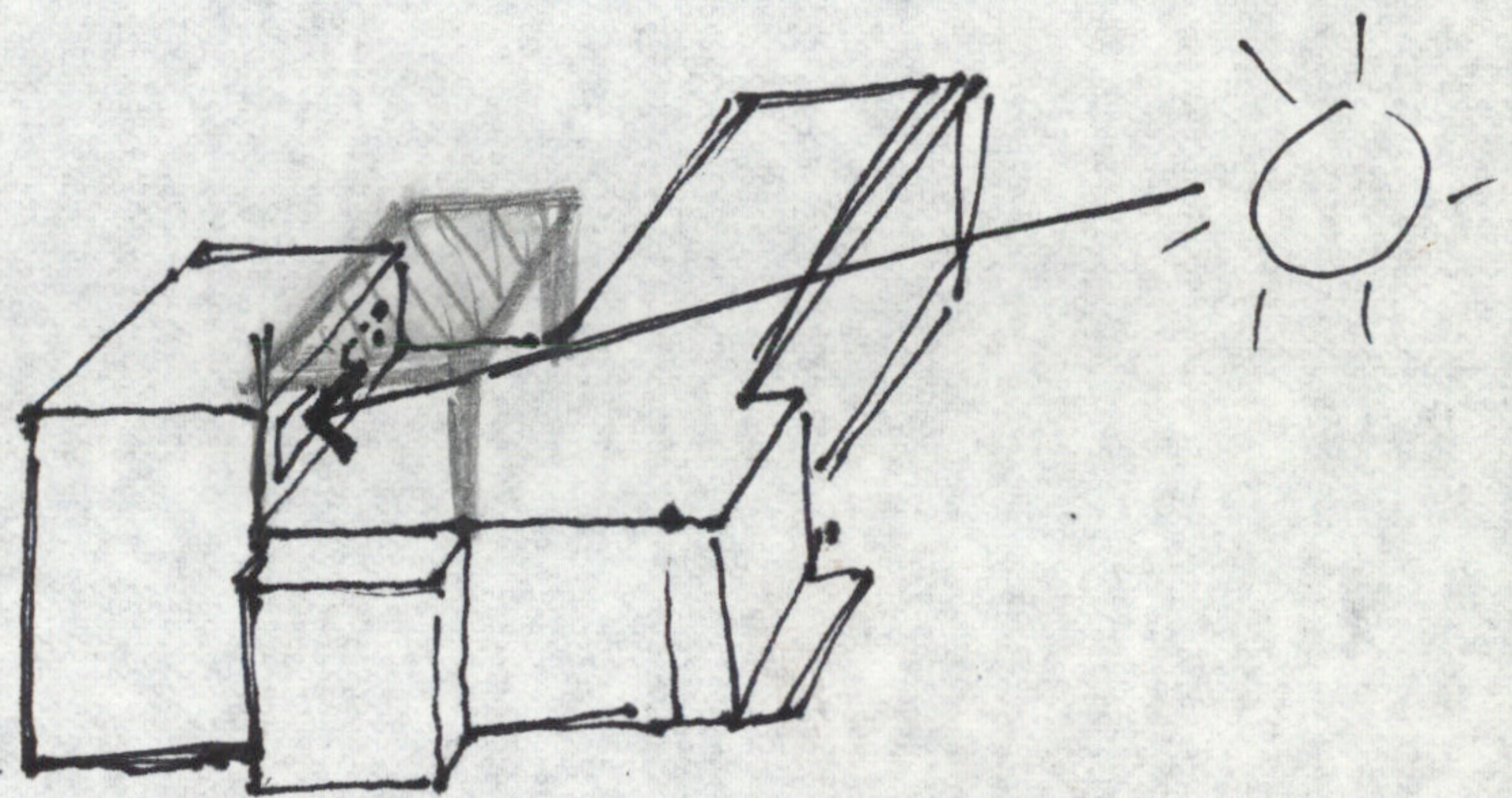
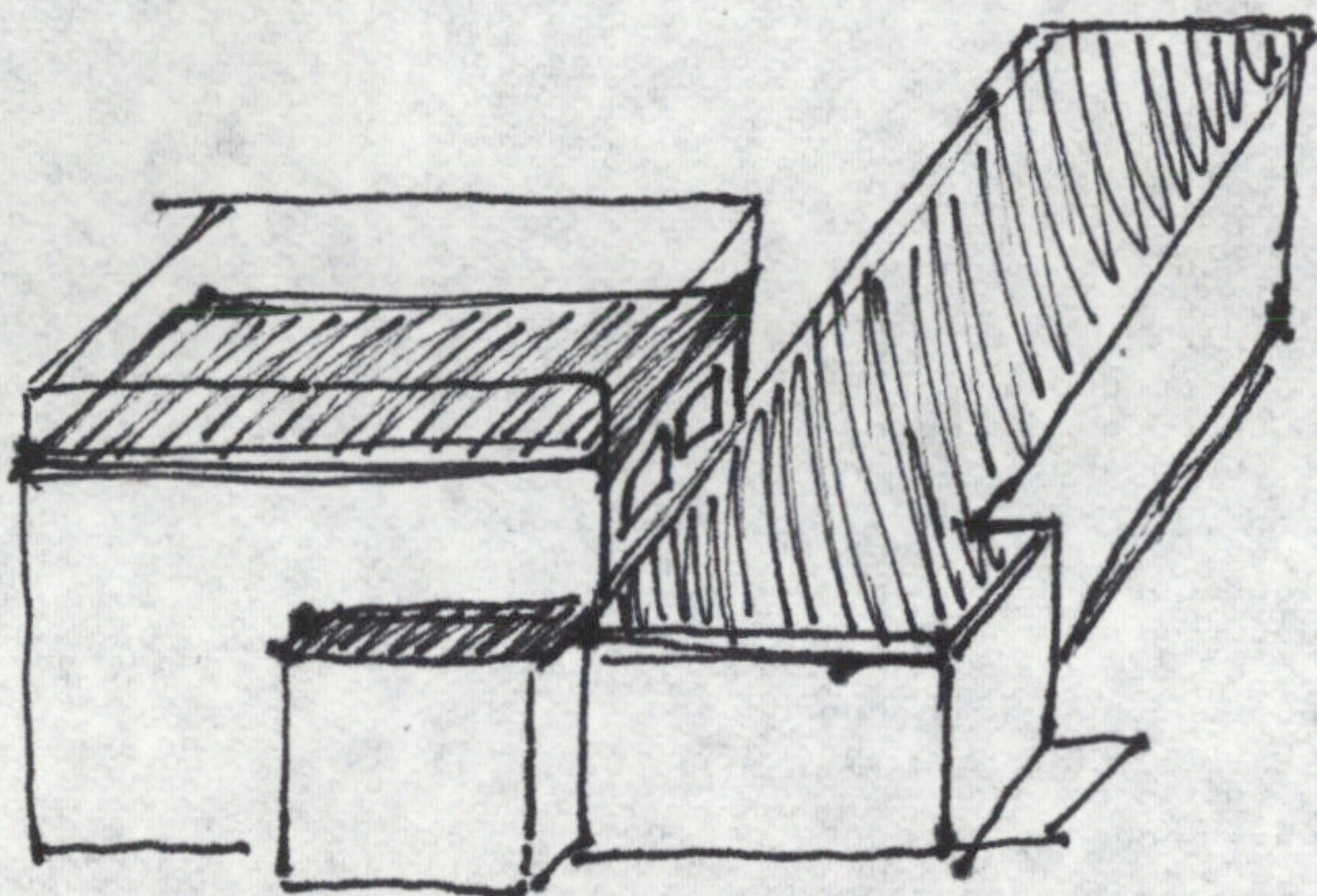
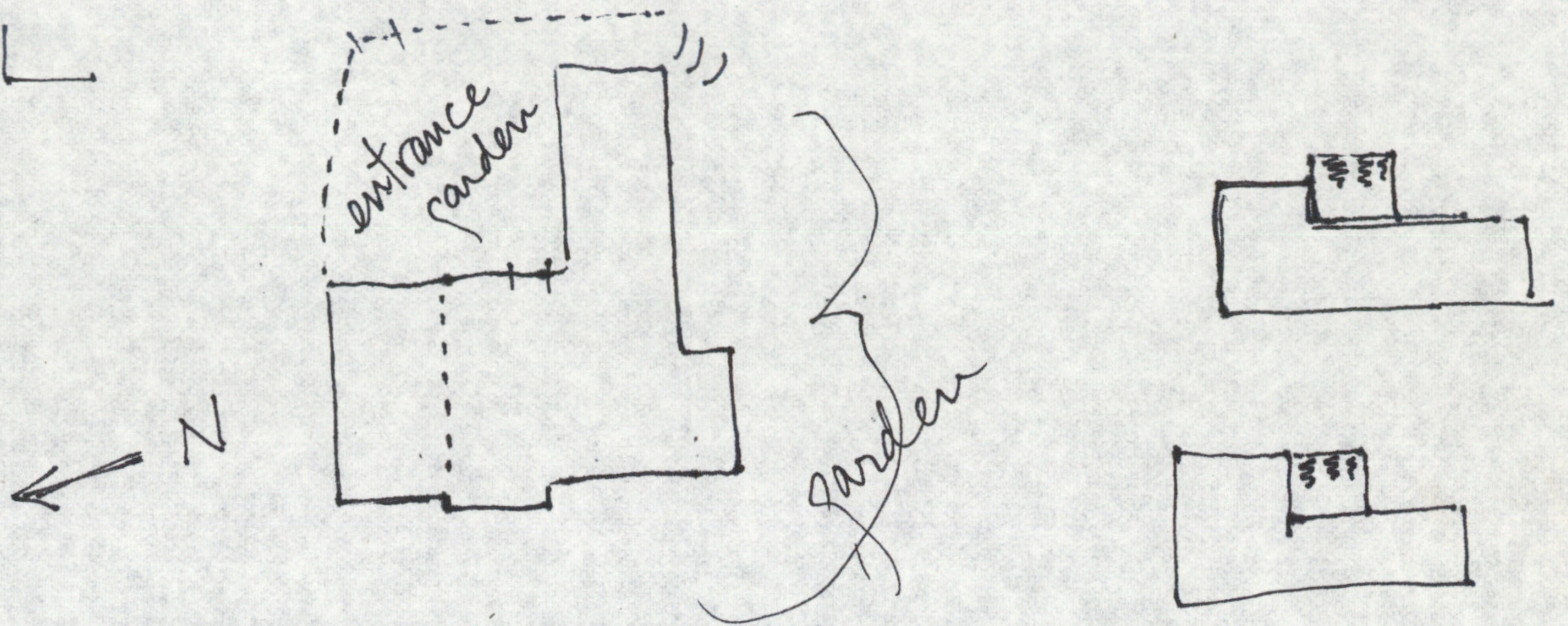


1. Main room and eating alcove windows must be low (to see out when sitting down).
2. all windows should be lower than usual.
(out of deference to short people! I can't see out of the kitchen windows in Shechanya!!)
3. Kitchen windows should come down almost to the level of the sink, counters, etc.
4. Window in the bath should be very low, just over the bath, so you can see out while sitting in the tub.

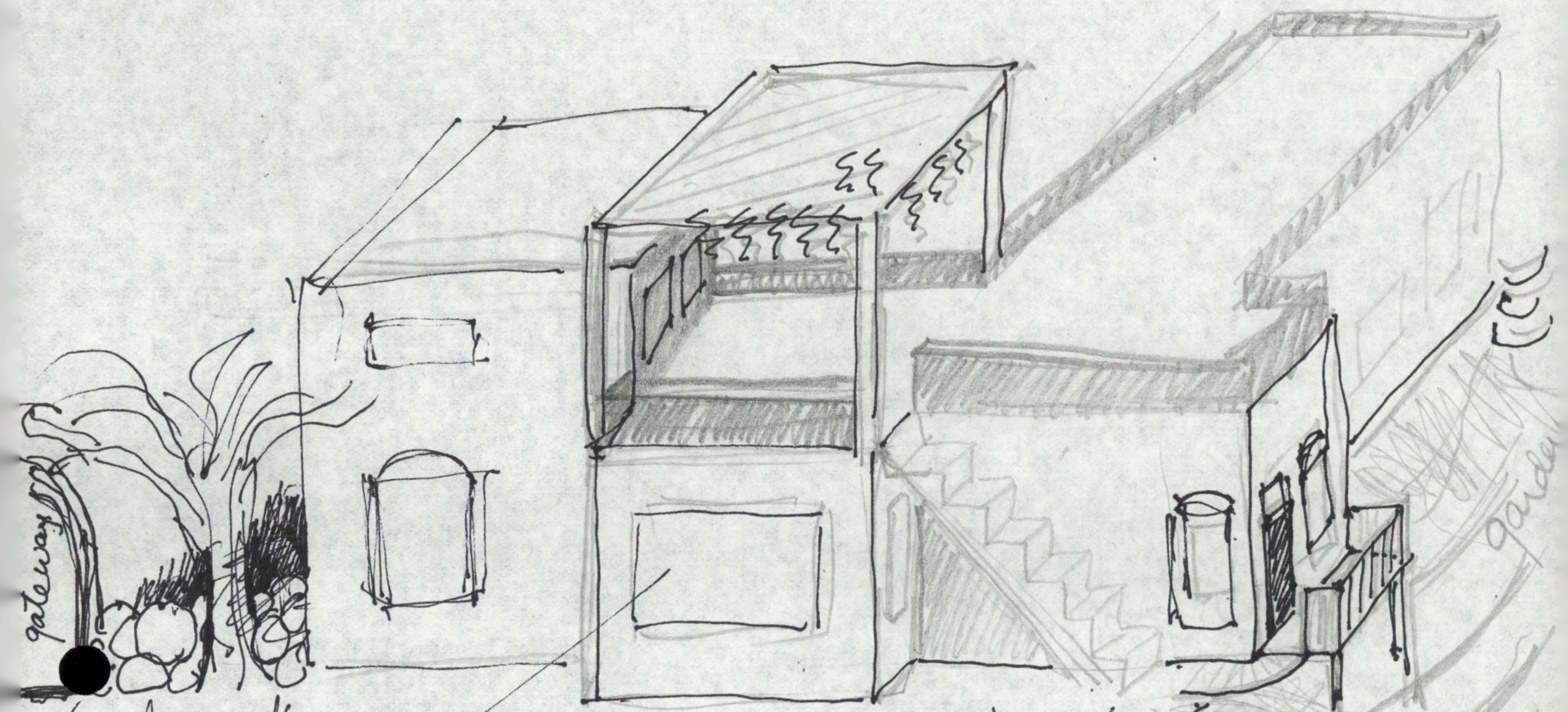
→ If it is not possible to raise the roof of only the northern room of the northern volume, I would like to put an interior window in the wall between the main room and the north room + a clerestory window over the door to that room.



DASKAL



- Southern volume: roof as low as allowed
- We would prefer to raise only the ^{roof of the} northern room as high as possible. We are thinking of a loft in here but our main concern is that this room get south light and heat by raising this roof and putting windows in on the south side. (The living room will get light from the kitchen). Also, the living room ceiling should be dropped anyway. On the roof of the living room, we will build a trellis + grape arbor. This will protect the north room in the summer but let sun in in the winter.



gateway

low wall

living room alcove
window for West
evening view

garden

vegetable
garden

maybe stairs to roof should
be on this side, leading from
kitchen (eating alcove door)
Also here are more stone
steps down to
vegetable garden

Daskal

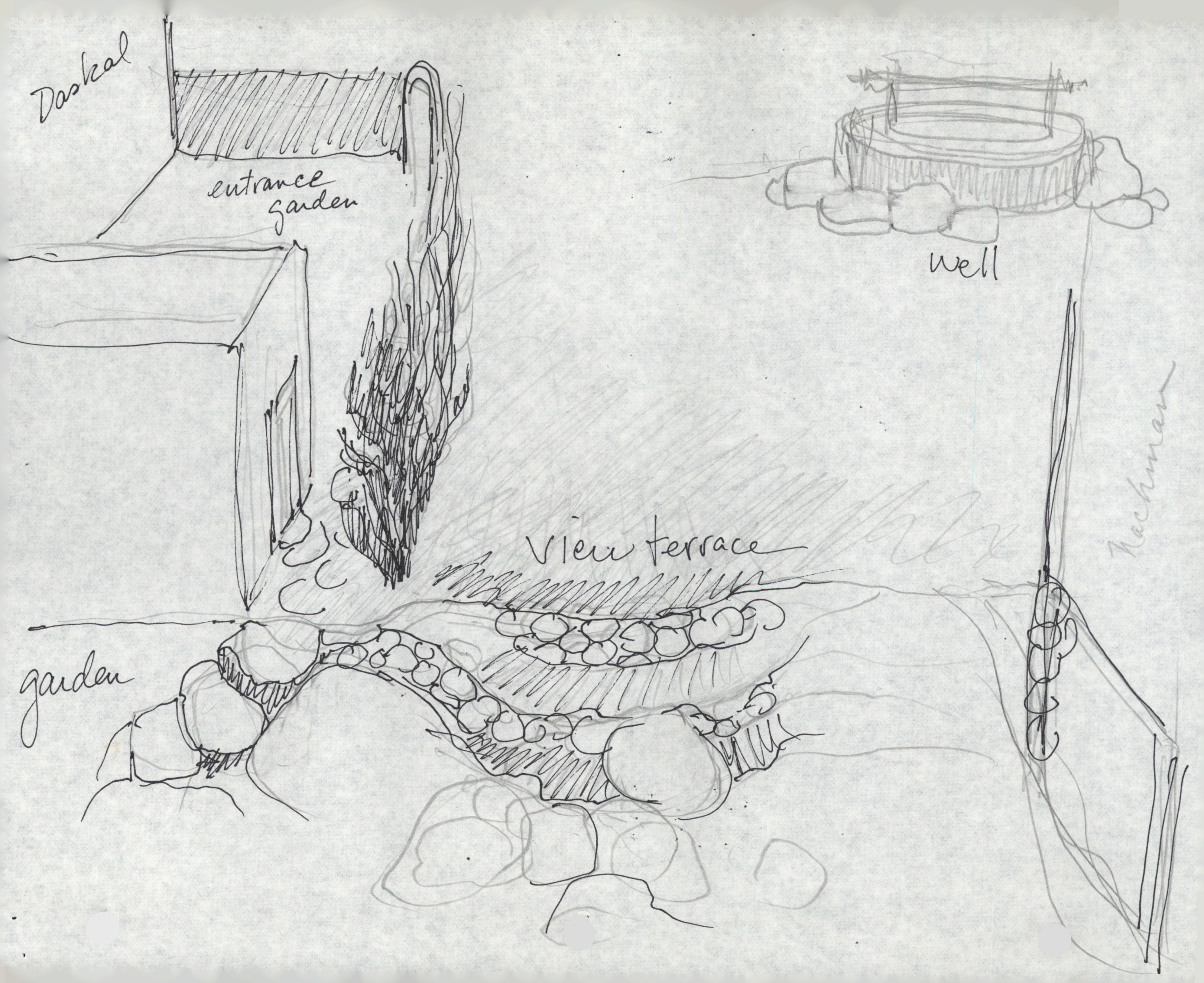
entrance
garden

well

view terrace

garden

Kachman



hills + tool
shed

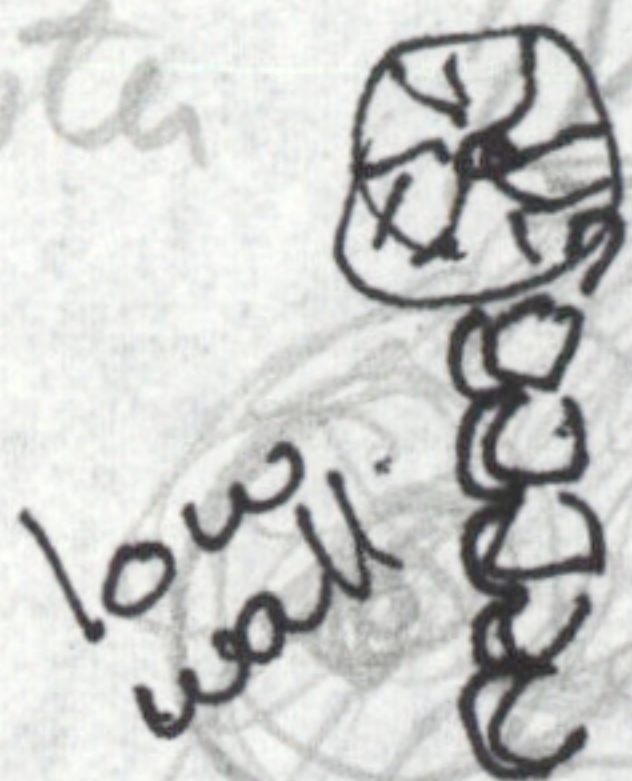
arbor



entrance
to
cluster

gate

path



planting

plant near house
so path won't be
directly under the
windows

well

entrance
garden

