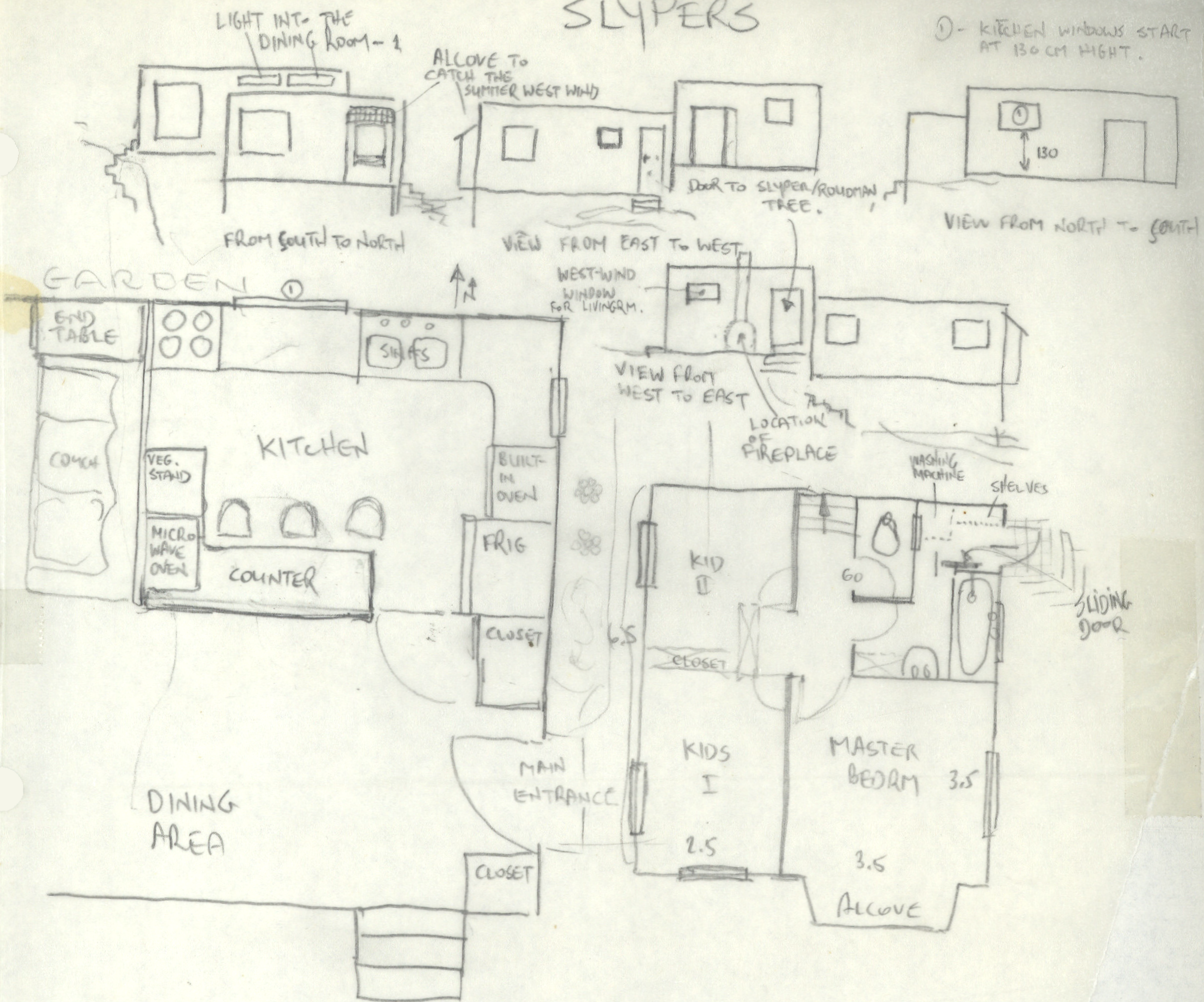


SLYPER'S 6-20-82

- 1) TOTAL PLAN AREA -  $7 \times 5 + 7.5 \times 6 =$  ALGOTIVE WITHOUT BALCONY  $\approx 78$  sqm
- 2) THE LOWER BLOCK WAS FINALLY DECIDED TO BE VERTICAL TO THE UPPER ON (THAT WAS THE REASON FOR ALGOTIVE: CATCH W. WIND.)
- 3) THE KITCHEN DOES NOT REFLECT THE LAYOUT WE AGREED W ARTA. IF IT WAS NOT GOOD WE EXPECT TO GET FEED BACK & EXPLANATION BUT NOT ANOTHER PLAN, PERIOD. WE'LL DISCUSS DETAILS WHEN YOU'RE HERE. THE SAME CASE W CHANGES YOU MADE FOR UNEXPLAINED REASONS IN THE LIVING ROOM, SERVICE ROOM (NR. BATHROOM)
- 4) WE ARE CONCERNED ABOUT "NICETIES" ADDED WHICH DO NOT REFLECT ANY OF OUR TASTE, NEEDS OR IMAGE OF THE MOSHAV BUT ARE VERY LIKELY TO ADD COST. WE DON'T SEE ANY STEPS TAKEN TO SAVE COSTS BUT ADD VALUE - ONLY ADD SOME FEATURES AND COSTS TOO. ALL THIS NEEDS EXPLANATIONS AND "DRY DRAWINGS" WILL NOT MAKE IT.

Slypera

# SLYPERS



WHEN WE EXPAND IT WILL MOST LIKELY BE ABOVE THE LOWER BLOCK. SHOULD ANY PRERARATIONS FOR STAIRS BE DONE NOW?

THE WINDOWS AND THE BED RMS SHOULD START AT 90-95 CM ABOVE THE FLOOR. IN THE KITCHEN - ABOVE 130.