

JUNE 5 1982

NAOMI AND PHILIP ALPER

1. THE MOSHAV AGREED, AND ARTEMIS DREW FOR US, A HOUSE OF 90 SQ. M. BECAUSE WE HAVE THREE CHILDREN. THE PLAN WE RECEIVED WAS FOR 74 SQ METRES AND IN NO WAY EXPANDABLE TO OUR ORIGINAL PLAN. IT OMITTED SOME OF OUR MOST IMPORTANT FEATURES:

A. THE FAMILY/GUEST ROOM HAS BEEN LEFT OUT

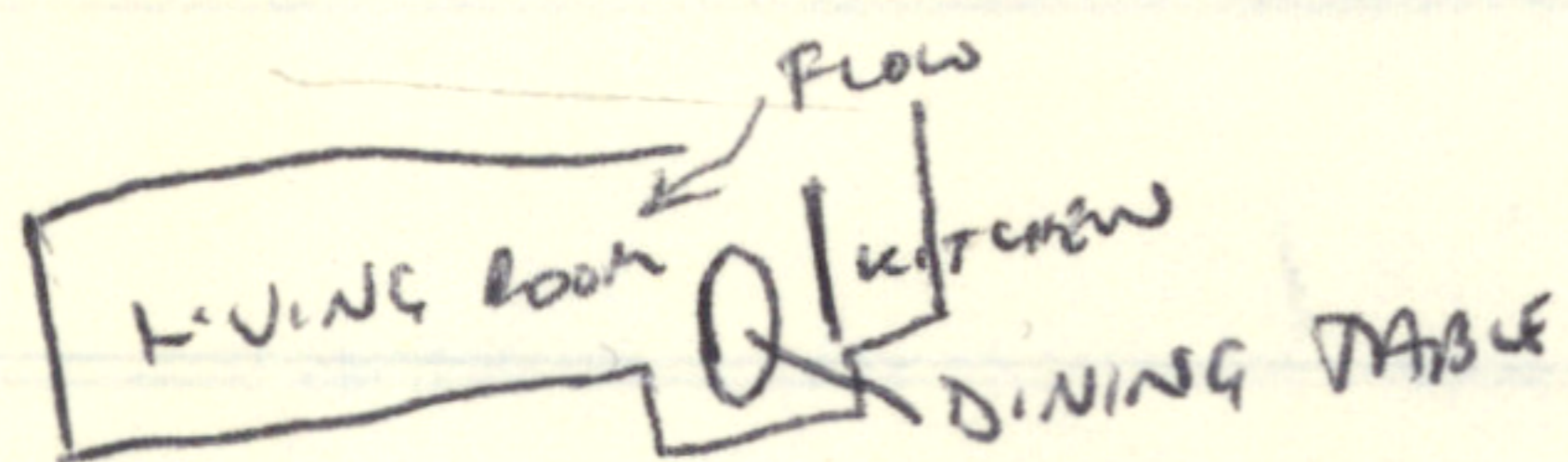
B. THE SECOND LA. TOILET + HANDBASIN HAS BEEN OMITTED - THIS ROOM TO BE LIGHTED AND VENTILATED WITH A PLASTIC DOME OVER A SKYLIGHT.

C. THE FOUR ALCOVES IN THE CHILDREN'S ROOM HAVE BEEN REARRANGED SO THAT NOW EACH DOES NOT HAVE ITS OWN WINDOW AS PLANNED. CAN THE ALCOVES EACH BE FITTED WITH A SLIDING GLASS OR PLASTIC DIVIDER TO GIVE EACH CHILD SOME PRIVACY IF REQUIRED?

ALPER

THERE ARE ALSO FEATURES IN THE FINAL PLAN THAT WE DO NOT LIKE


1. THE DIVIDER BETWEEN THE LIVING AND DINING ROOM - WE HAD ENVISIONED ONE ROOM WITH THE VIEW WINDOW ACTING AS AN ALCOVE IN WHICH OUR DINING TABLE COULD BE PARTIALLY PLACED



SO THAT IT DID NOT OBSTRUCT THE FLOW THROUGH INTO THE LIVING ROOM

2. WE ARE AMBIVALENT ABOUT THE NUMBER OF WINDOWS ON THE SOUTH SIDE OF THE HOUSE. ALTHOUGH THESE WILL PROVIDE WINTER LIGHT AND WARMTH WILL THEY NOT CREATE A GREENHOUSE EFFECT IN SUMMER IN THE LIVING ROOM? WE ORIGINALLY ASKED FOR A SMALL WINDOW APART FROM THE LARGE VIEW WINDOW TO GIVE ACCESS TO THE VIEW BETWEEN THE SYNAGOGUE AND LOUIS' HOUSE. THIS MAY BE MOVED SLIGHTLY EASTWARD, BUT WE WANT SOME BLANK INTERIOR WALL SPACE.

WE ALSO WANT A SMALL WINDOW OVERLOOKING THE FRONT DOOR.

WE WOULD PREFER A SQUARED VIEW WINDOW 

- 3. NO STAIRS HAVE BEEN PLANNED TO THE ROOF
- 4. THE CEILING IN THE LIVING ROOM/KITCHEN BLOCK IS TOO HIGH - HARD TO CHANGE LIGHT BULBS, PAINT ETC.. COULD THE FLOOR LEVEL BE RAISED? ALTERNATIVELY - RAISE ROOF LEVEL OR BEDROOM BLOCK ^{INSTEAD} ADD RAISE CEILING FOR STORAGE
- 5. IT HAS BEEN POINTED OUT TO US THAT IF THE CHILDREN'S ROOM & MASTER BEDROOM ARE SWITCHED IN THE 90 SQ M VERSION, AND THE DOORS PLACED CLOSE TO EACH OTHER, THE FAMILY/GUEST ROOM WOULD BE MORE PRIVATE.

