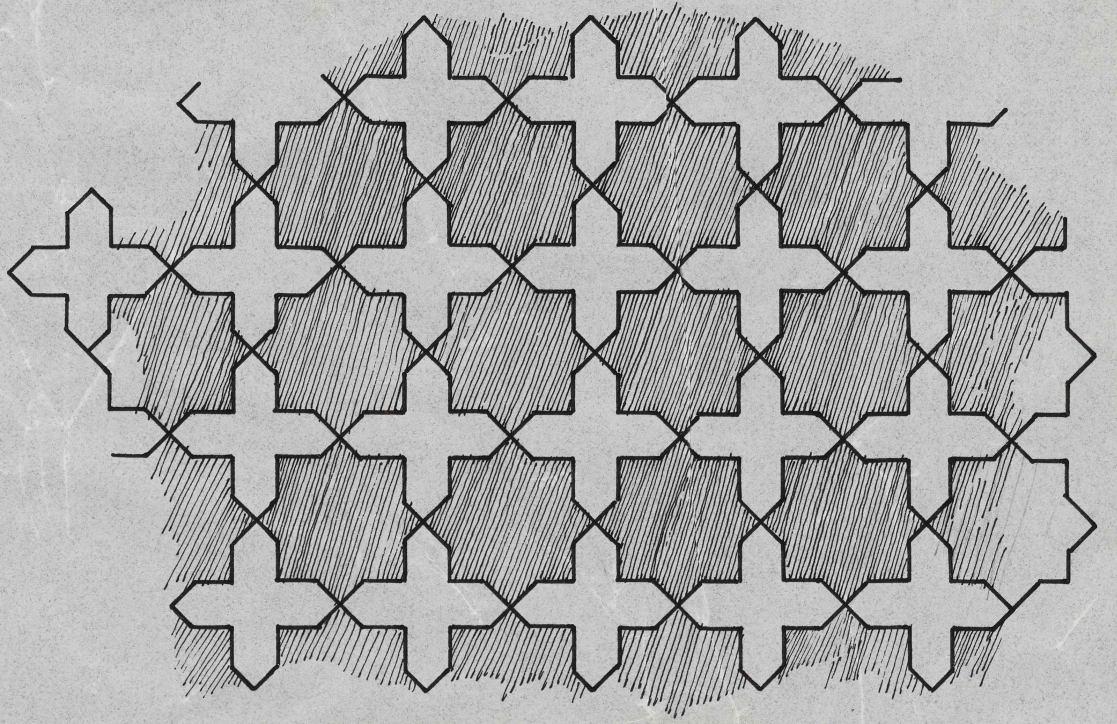
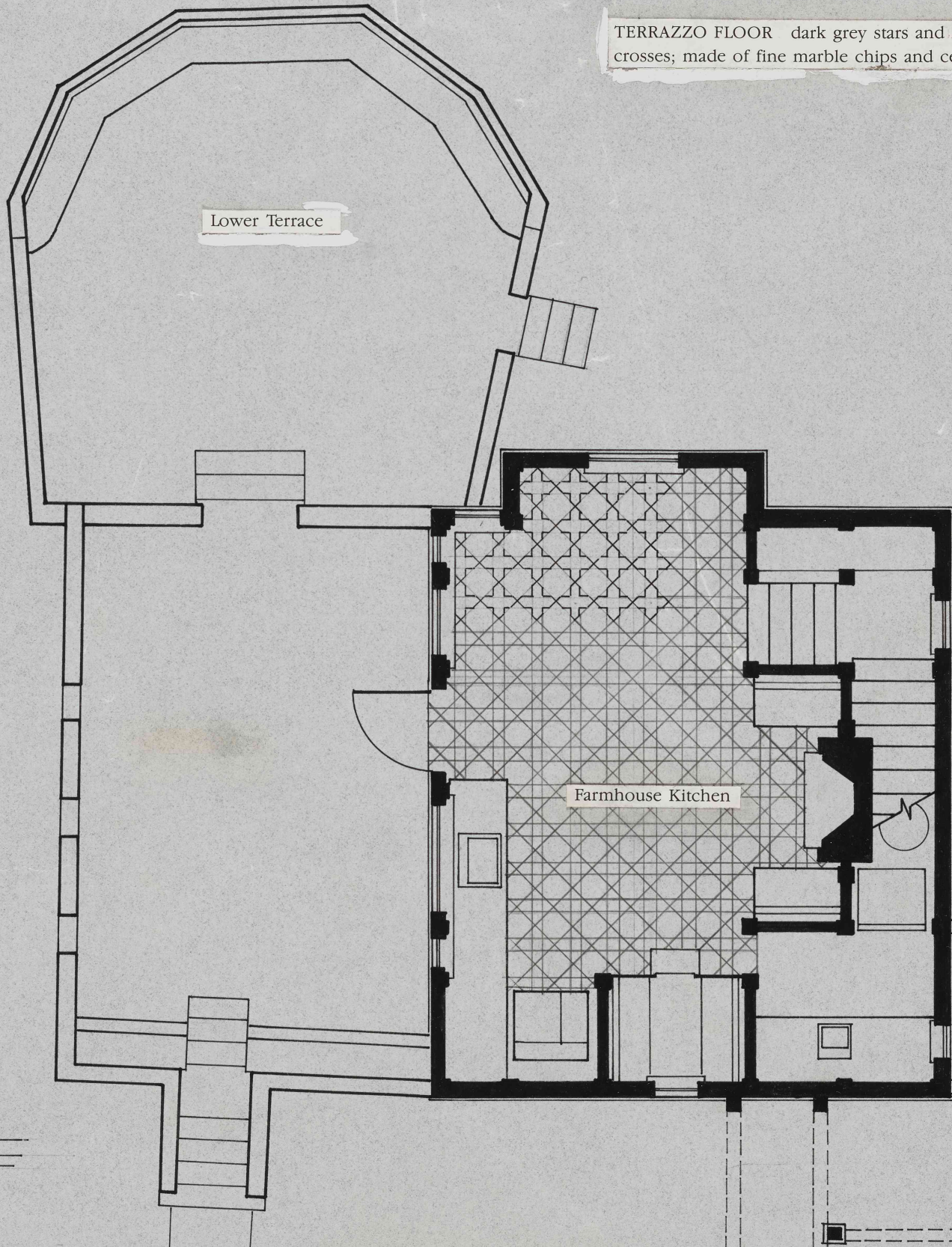


UPPER TERRACE



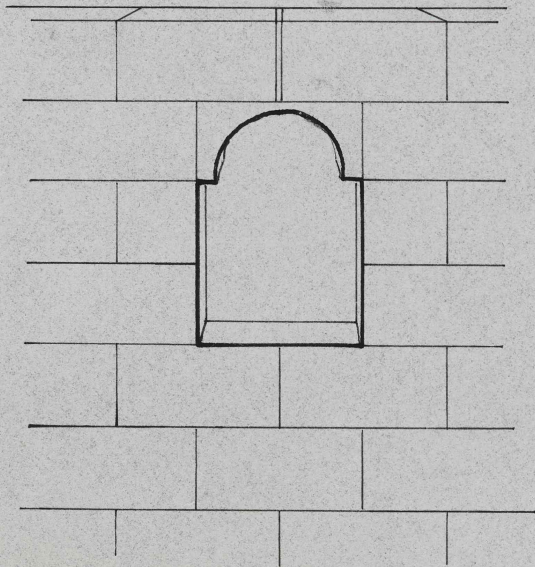
TERRAZZO FLOOR dark grey stars and light green crosses; made of fine marble chips and cement.



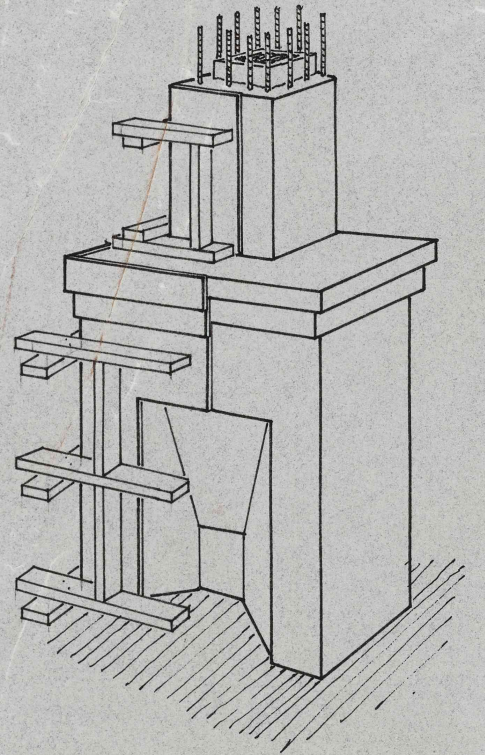
Lower Terrace

Farmhouse Kitchen

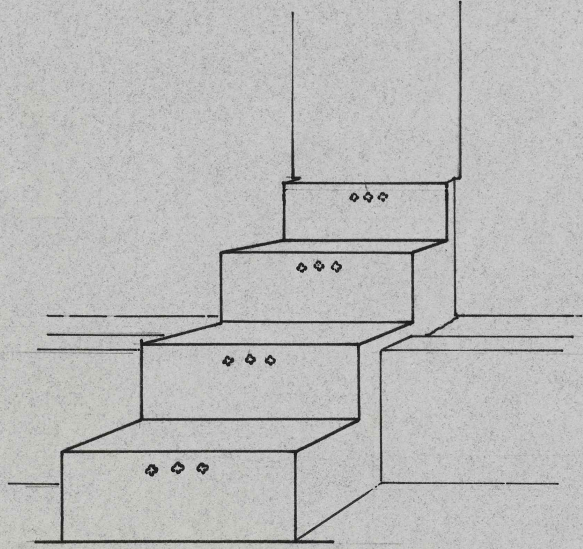
GROUND FLOOR PLAN



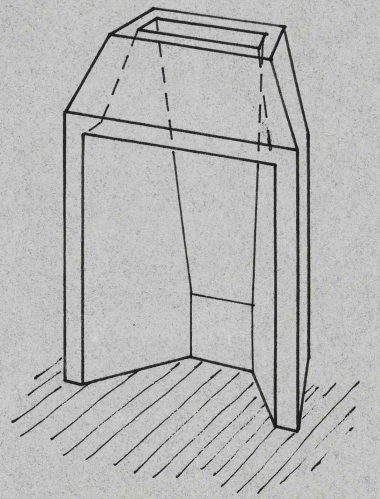
ARCH poured within block wall over styrofoam form.



COUNT RUMFORD FIREPLACE standard concrete poured around firebox and tile flue



STAIR ORNAMENTS Shapes created with foam, plastered later.



FIREBOX fireproof concrete poured in a plywood form