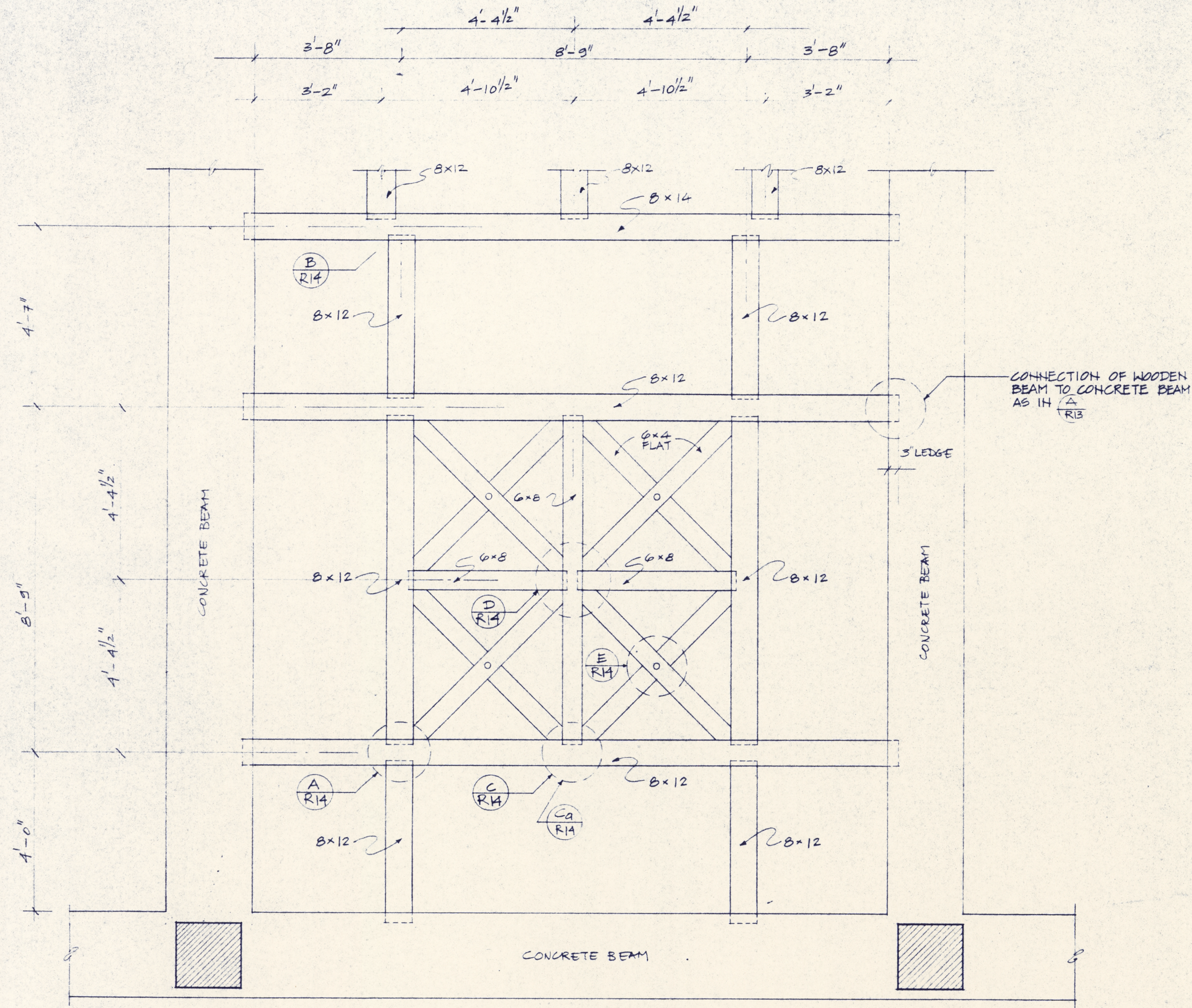
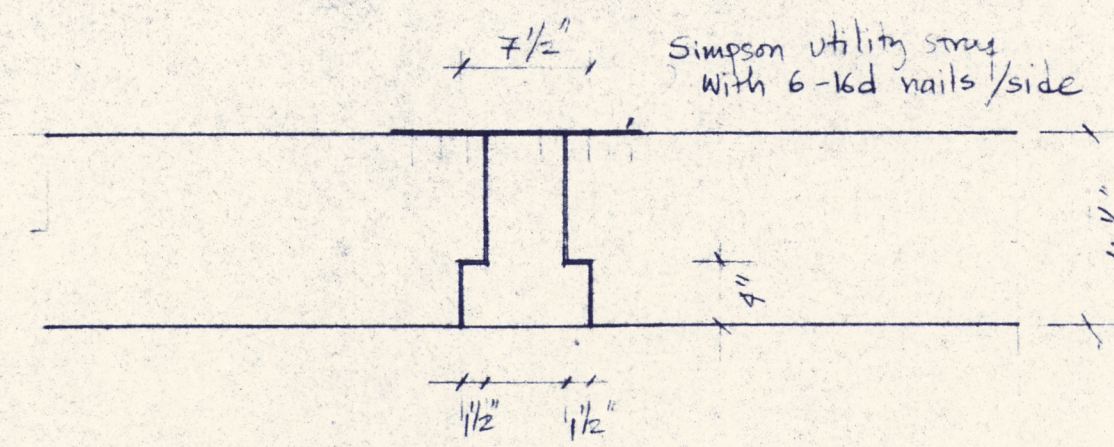


RESIDENTIAL BUILDING

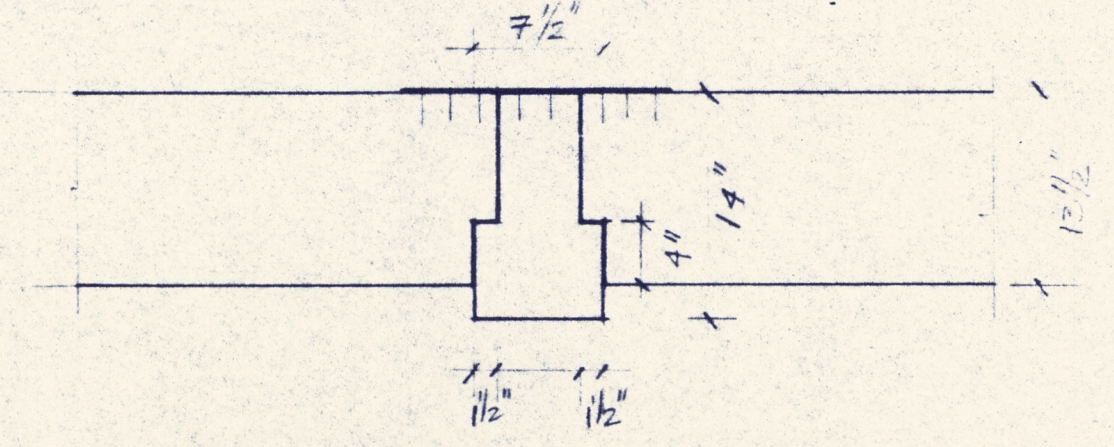


(F) REFLECTED CEILING PLAN AT MAIN LOBBY  
SCALE: 1/2" = 1'-0"

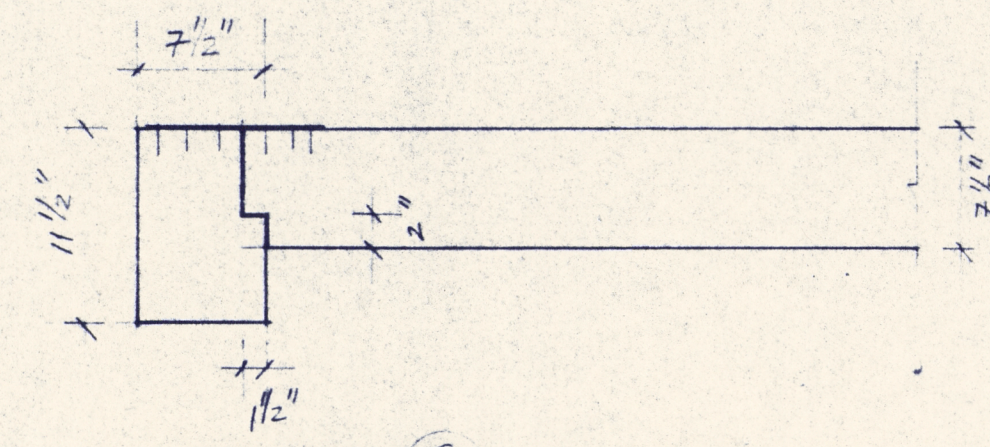
NOTE: DIMENSIONS TO BE VERIFIED BEFORE CONSTRUCTION



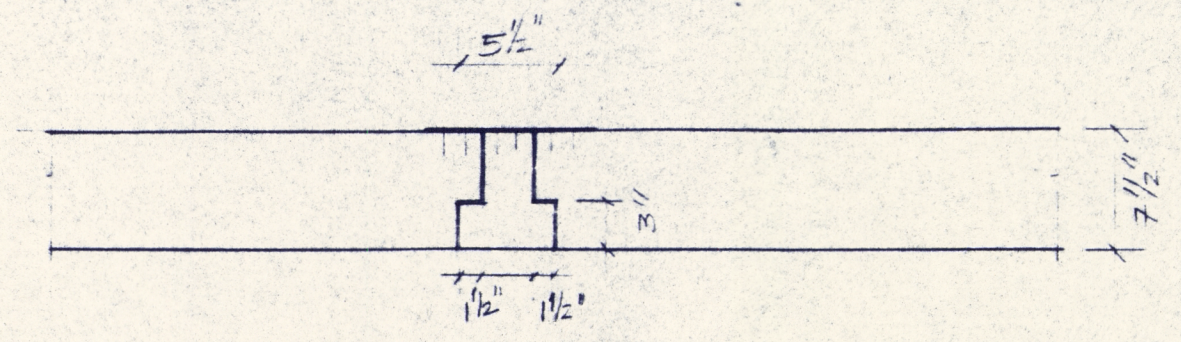
SECTION (A)  
CONNECTION OF 8x12 TO 8x12  
SCALE: 1" = 1'-0"



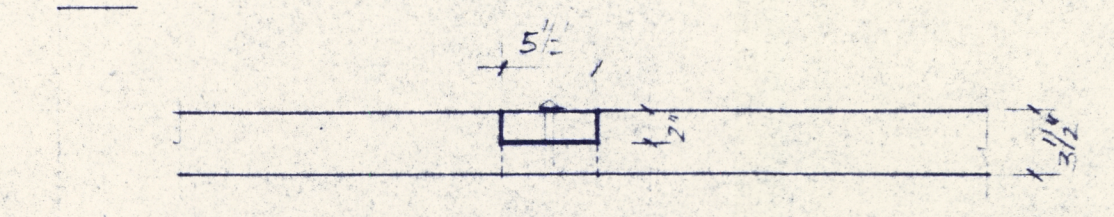
SECTION (B)  
CONNECTION OF 8x14 TO 8x12  
SCALE: 1" = 1'-0"



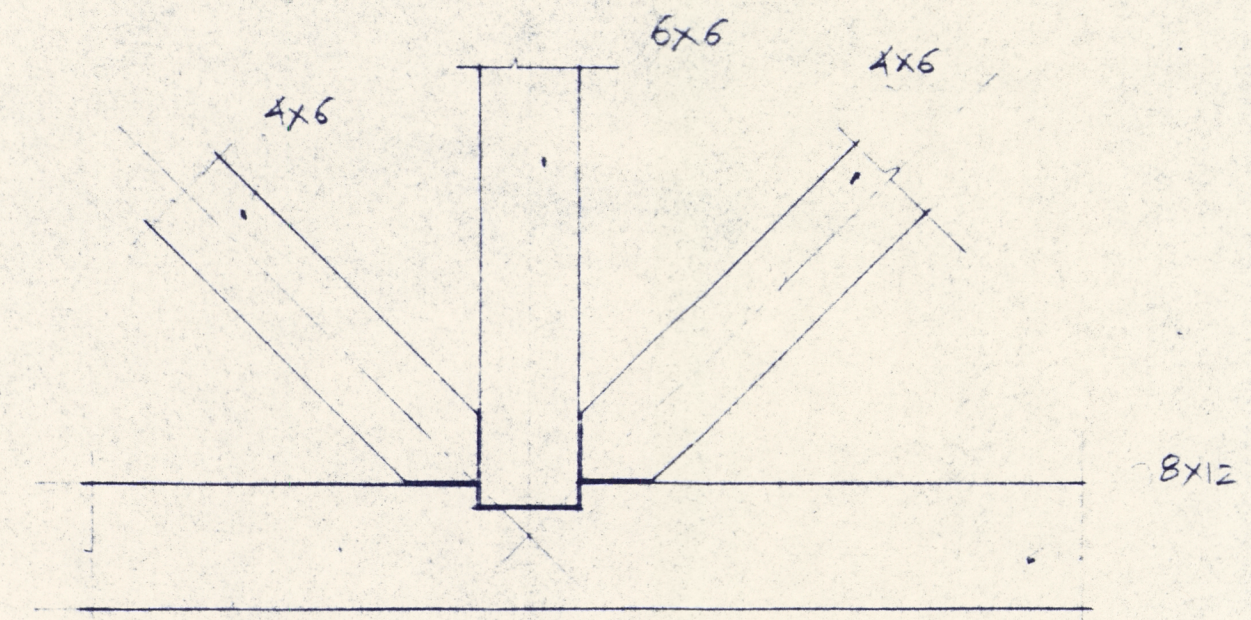
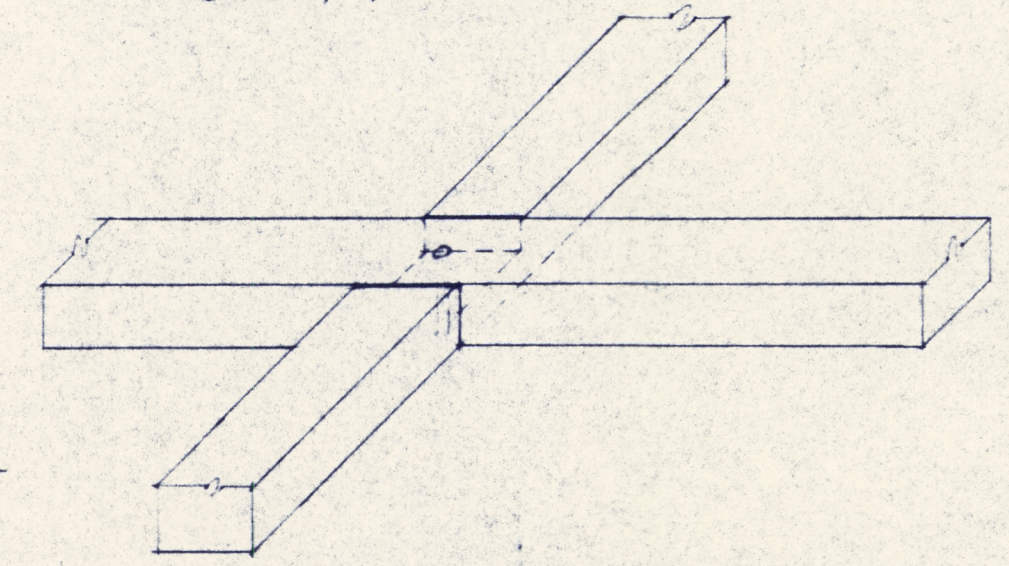
SECTION (C)  
CONNECTION OF 8x12 TO 6x8  
SCALE: 1" = 1'-0"



SECTION (D)  
CONNECTION OF 6x8 TO 6x8  
SCALE: 1" = 1'-0"



SECTION (E)  
CONNECTION OF 4x6 TO 4x6  
SCALE: 1" = 1'-0"



(Ca)  
RH - PLAN FROM TOP  
4x6 BEAMS BUT JOINTED, TYPICAL  
SCALE: 1" = 1'-0"

NOTE:  
USE THE SAME DETAILS FOR ENTRANCE LOBBY  
SEE R5 FOR BEAM SIZES

HEAVY TIMBER DETAILS FOR CEILINGS  
IN MAIN LOBBY AND ENTRANCE LOBBY

DATE: JULY 10, 1987

