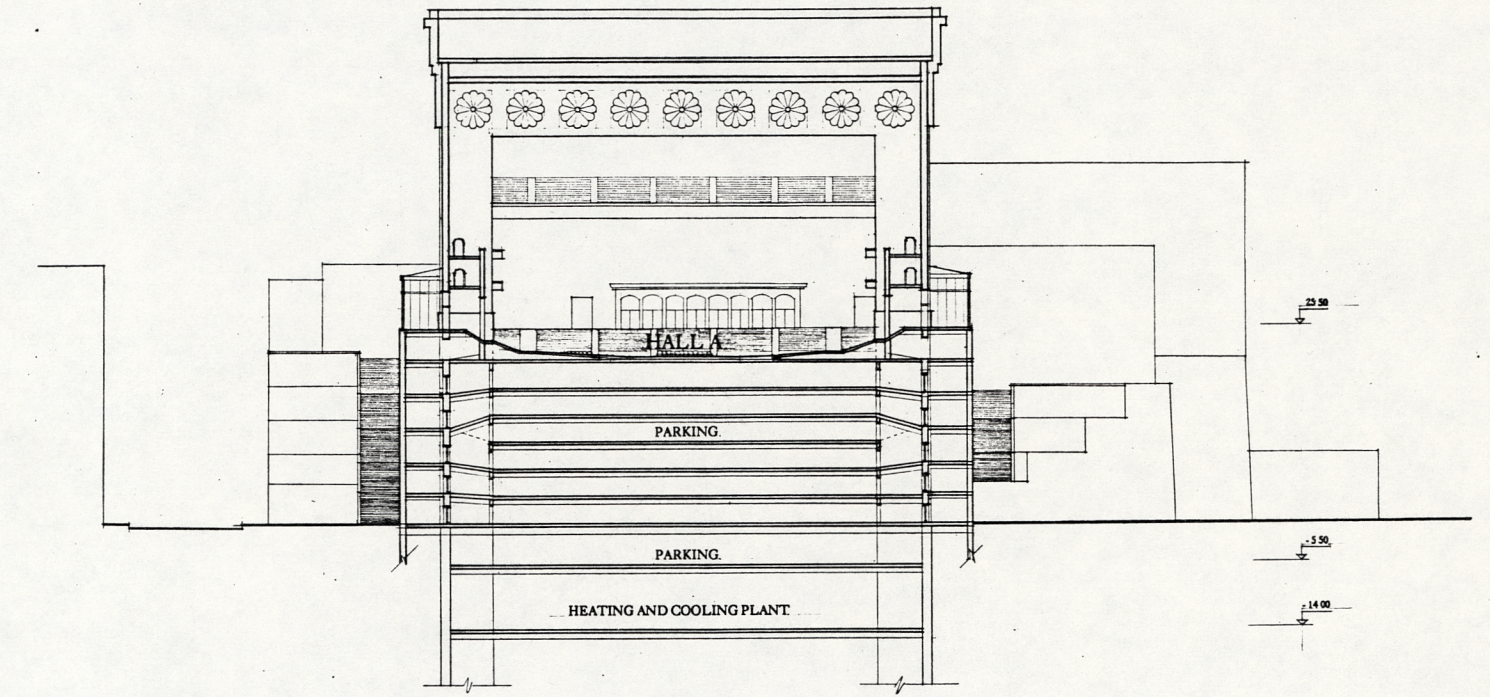
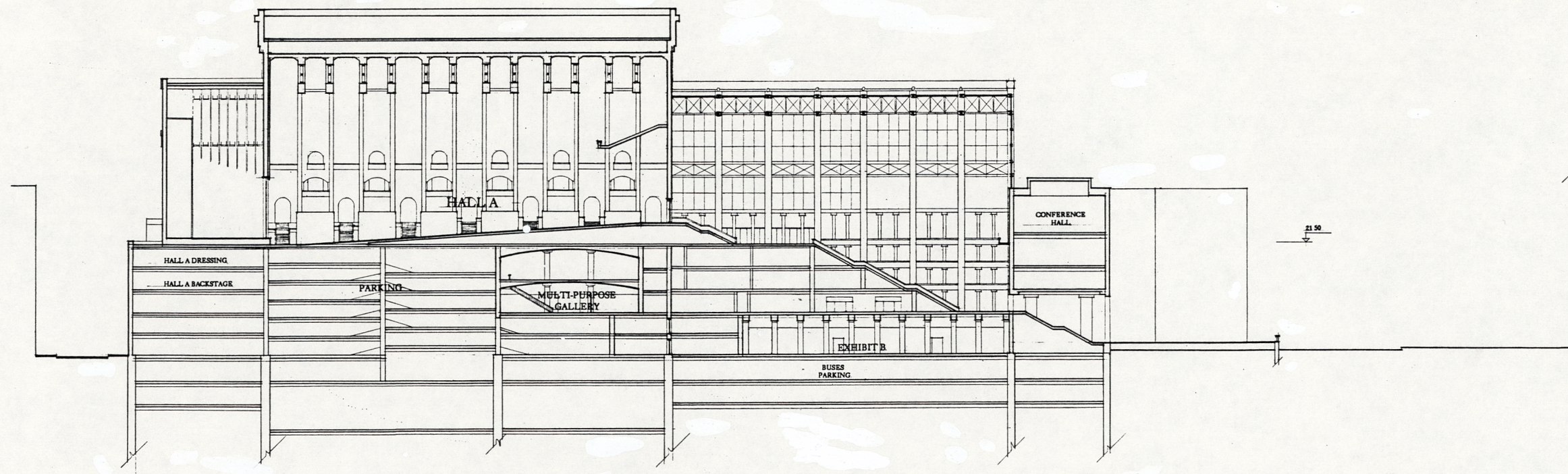


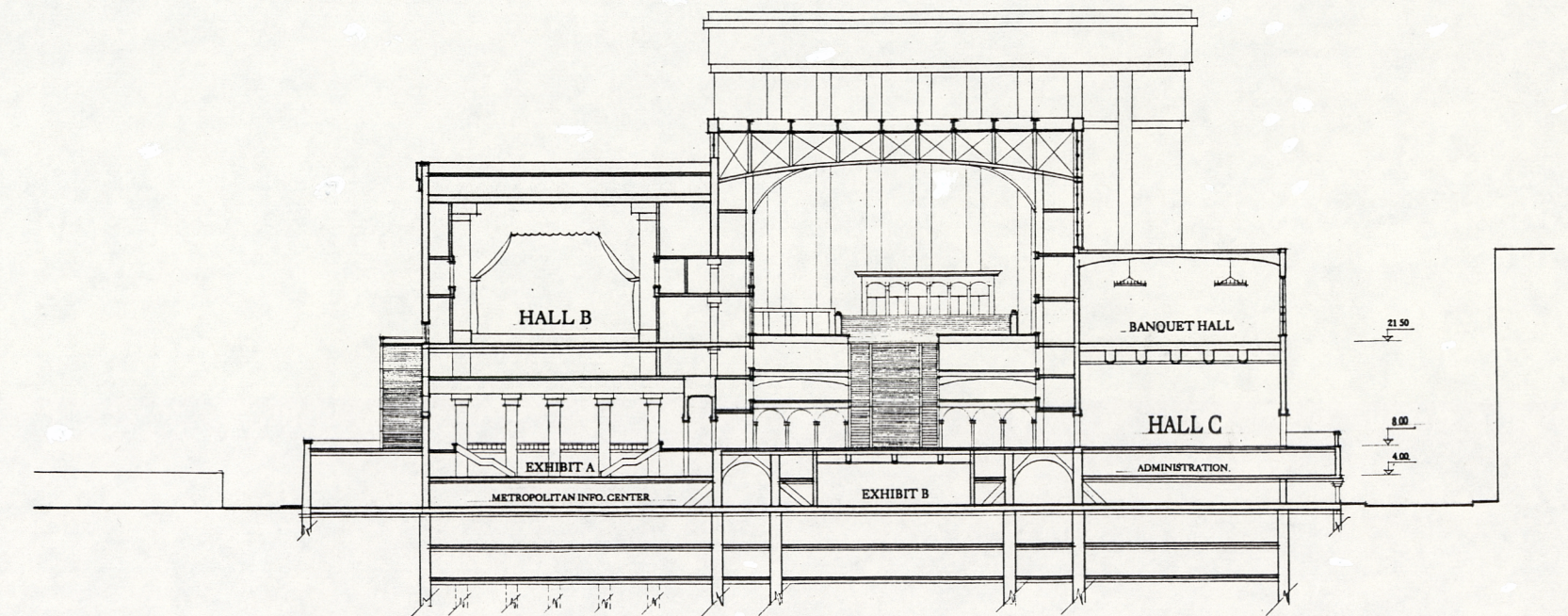
LONGITUDINAL SECTION THROUGH HALL C, FACING EAST



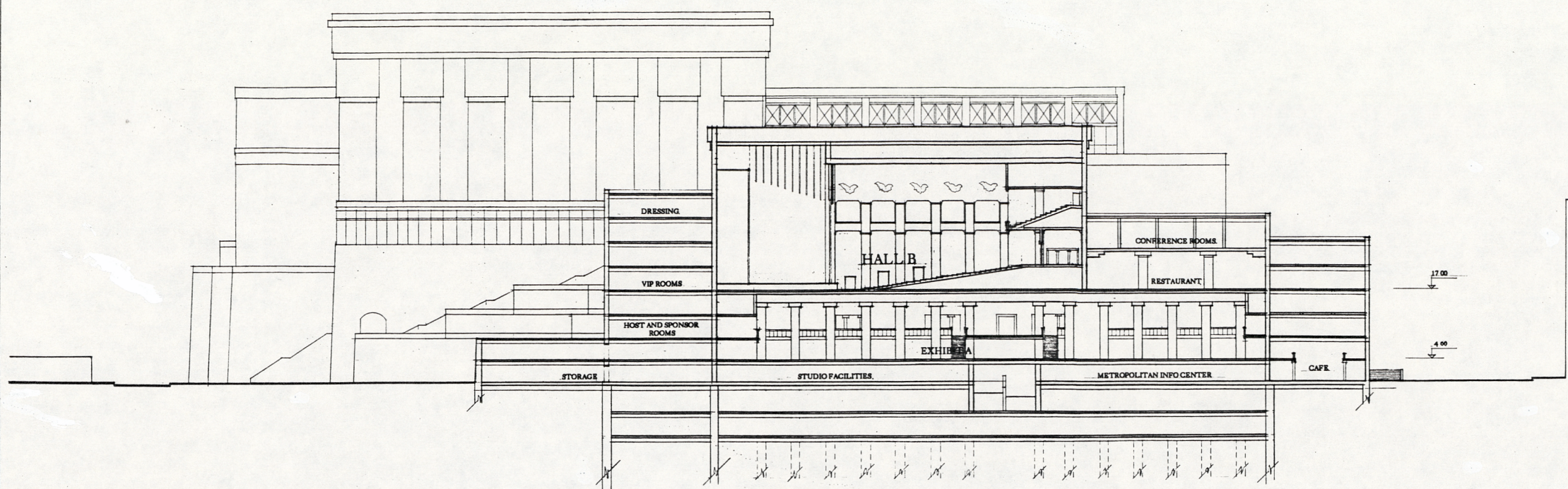
CROSS SECTION THROUGH HALL A, FACING NORTH



LONGITUDINAL SECTION THROUGH HALL A AND GRAND LOBBY, FACING WEST



CROSS SECTION THROUGH GRAND LOBBY, FACING SOUTH



LONGITUDINAL SECTION THROUGH HALL B AND EXHIBIT A, FACING WEST