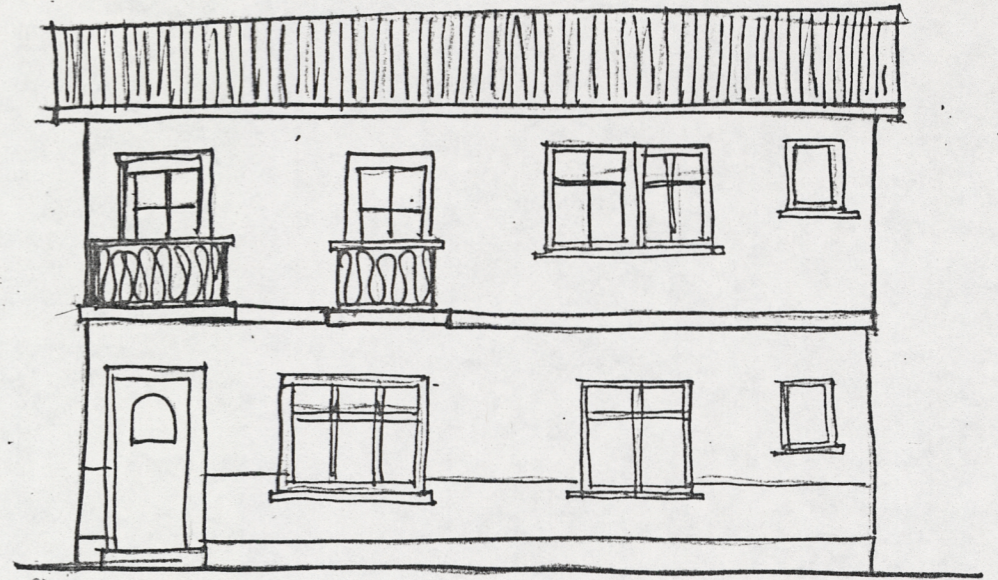
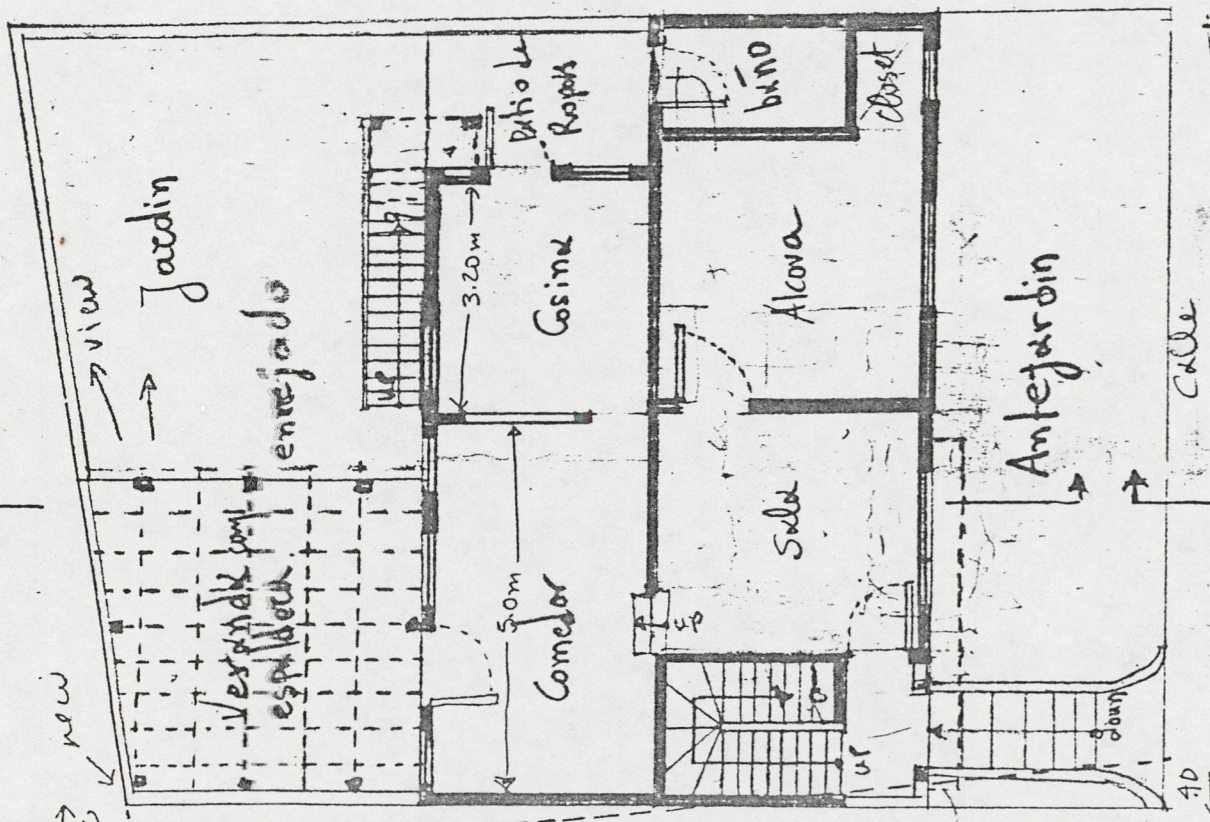


SECCION

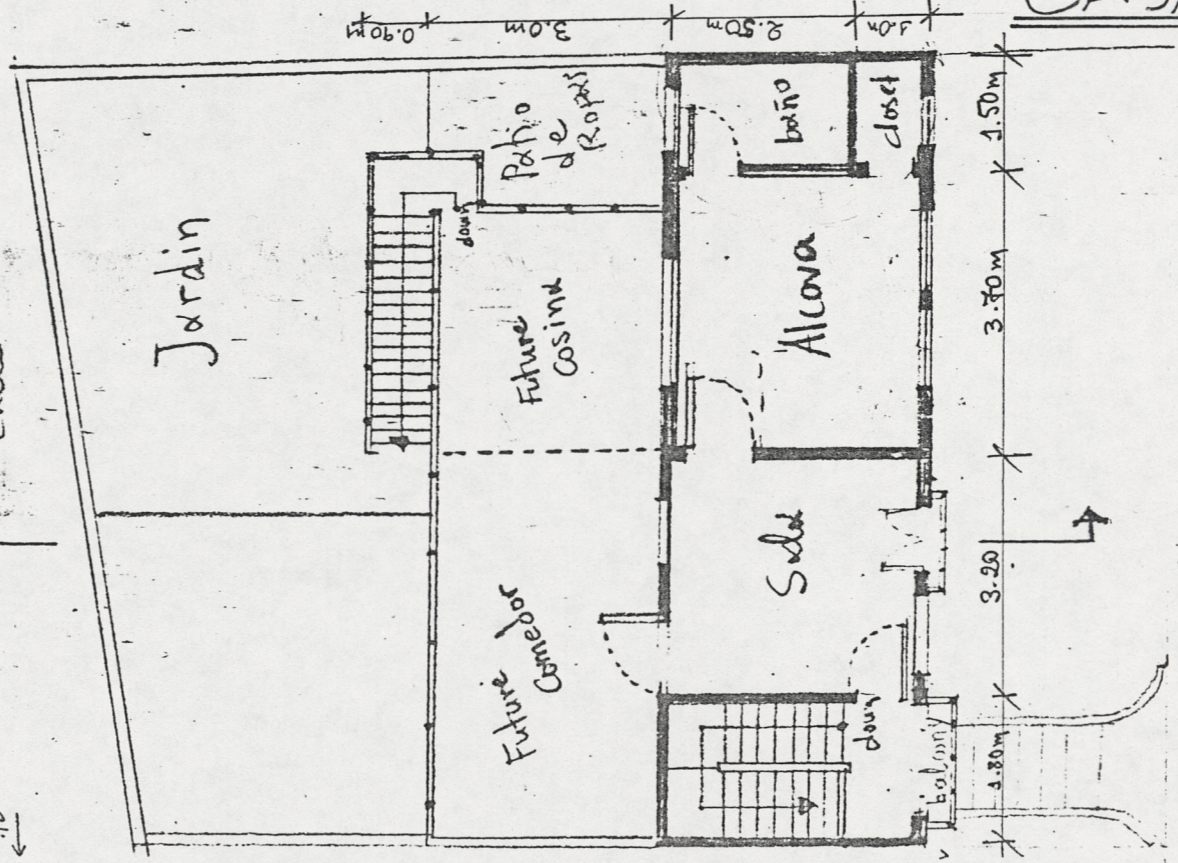


FACHADA

CASA COMPLETA



1º PISO



2º PISO

LOTE : 25
 J. de DIOS OROZCO
 1ª FASE: 49.0 m²
 2ª FASE: 94.0 m² total

JUNTA DE VIVIENDA COMUNITARIA.
 URBANIZACION LAS ARAUCARIAS.
 Barrio Roca de Cabel.

PLANO ESCALA - 1:100

CENTER FOR ENVIRONMENTAL STRUCTURE
 Architects and Contractors Berkeley, CA.