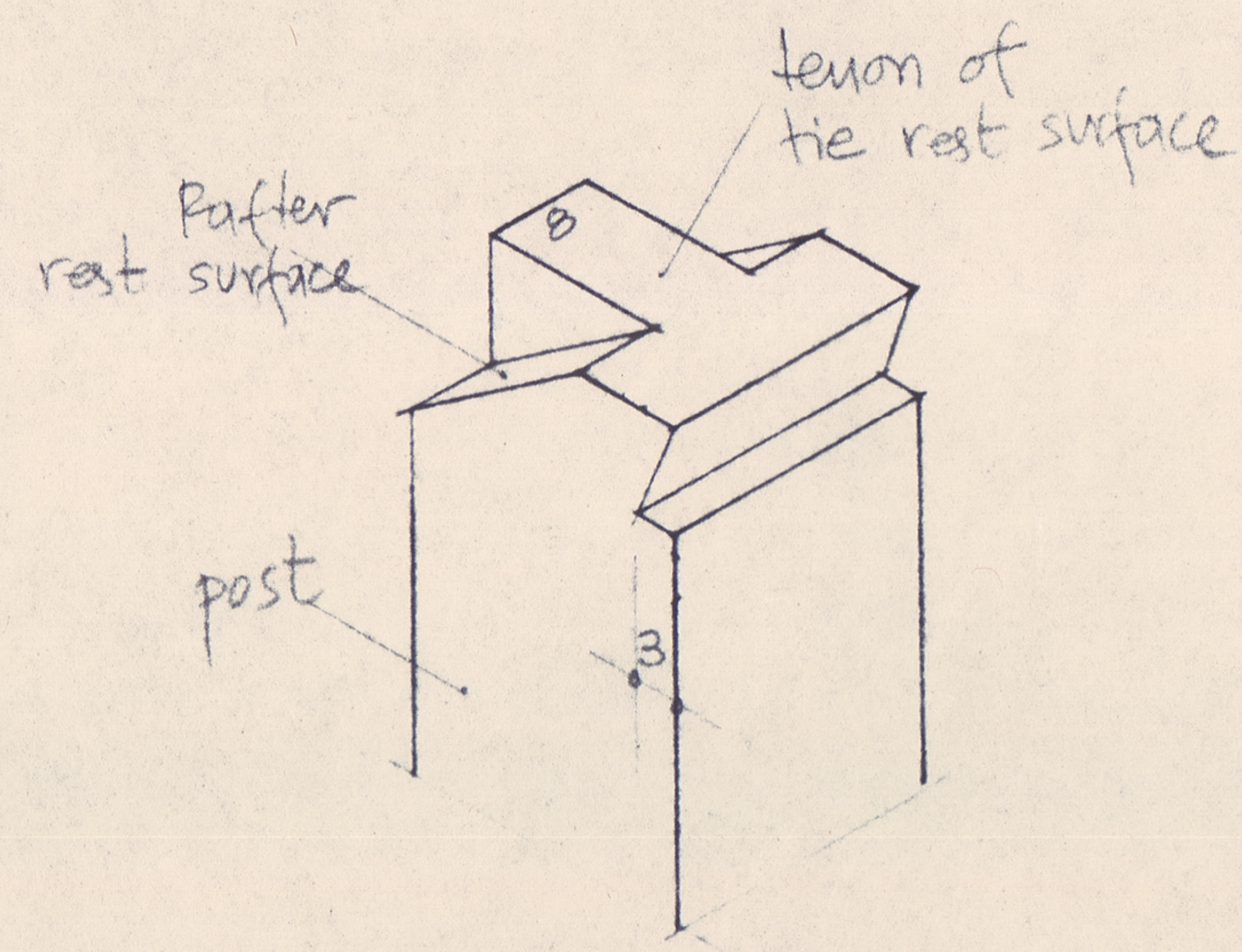
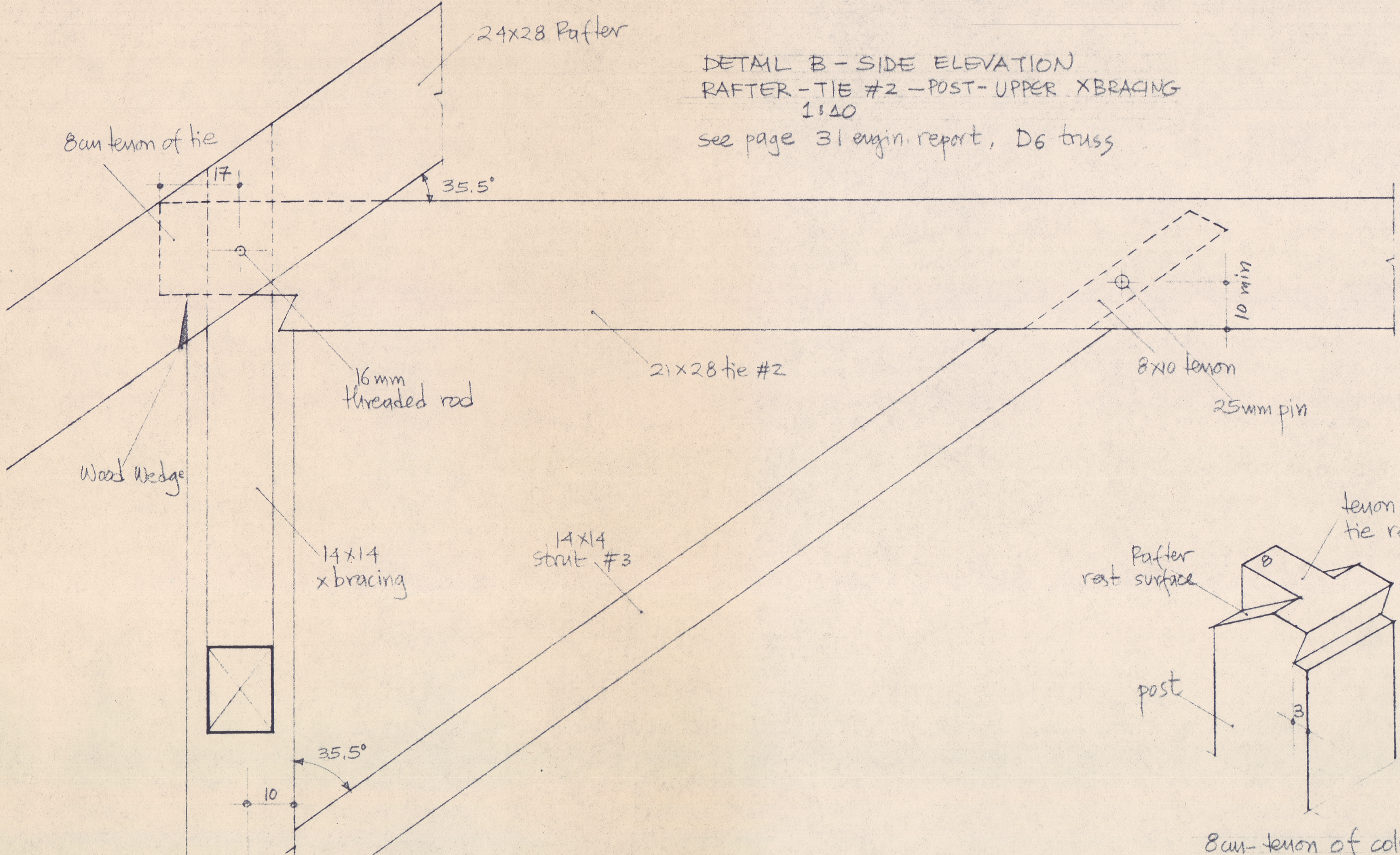


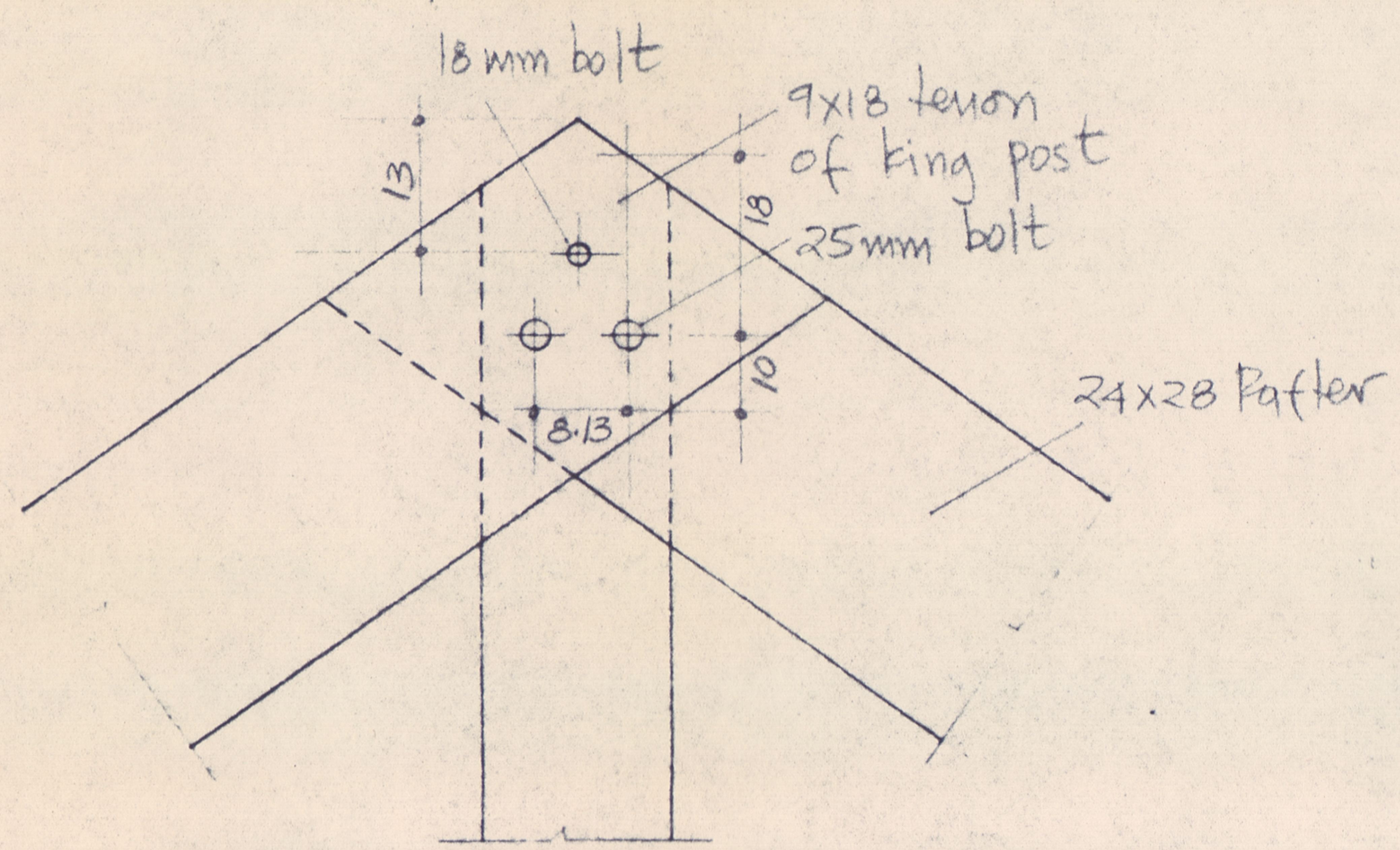
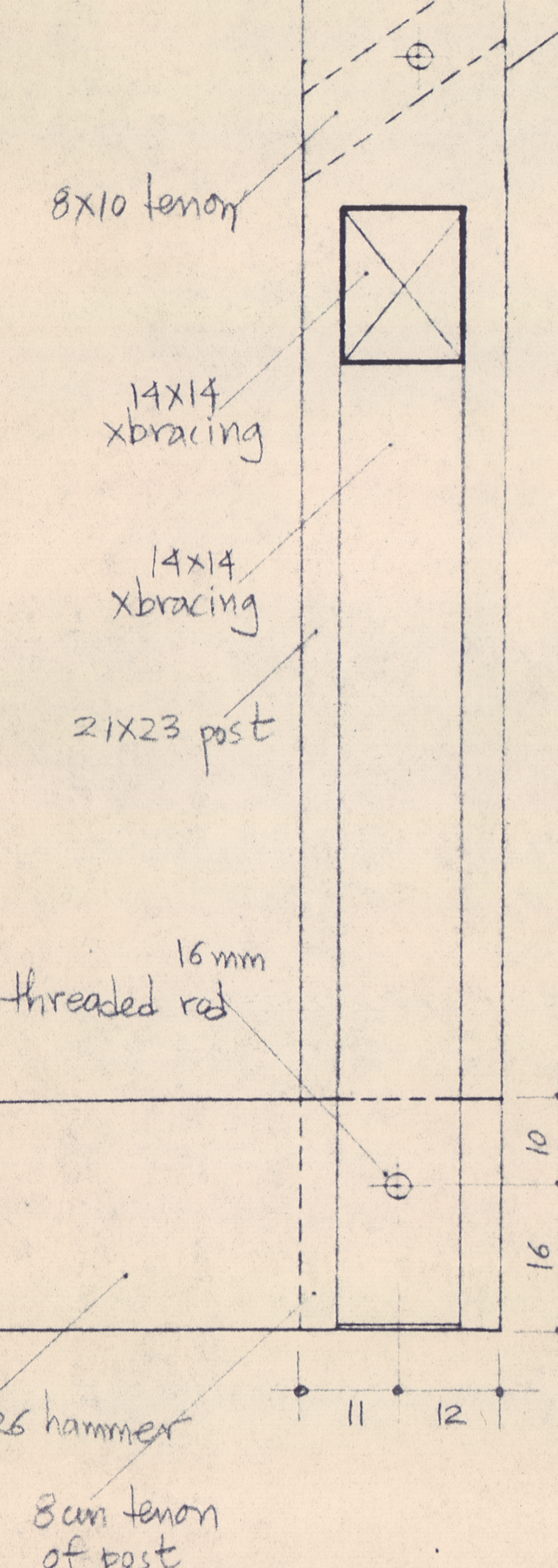
DETAIL B - SIDE ELEVATION
 RAFTER - TIE #2 - POST - UPPER XBRACING
 1:40

see page 31 engin. report, D6 truss



8x10 tenon of column
 1:10
 see page 31 engin. report

DETAIL N
 STRUT #3 - TIE #2 AND STRUT #3 -
 POST CONNECTION
 see page 32 engin. report,
 D6 truss



DETAIL I - FRONT ELEVATION
 APEX OF TRUSS 1:40, see page 33 eng. report, D6 truss

DETAIL C - SIDE ELEVATION:
 UPPER XBRACING - HAMMER - POST
 1:10

