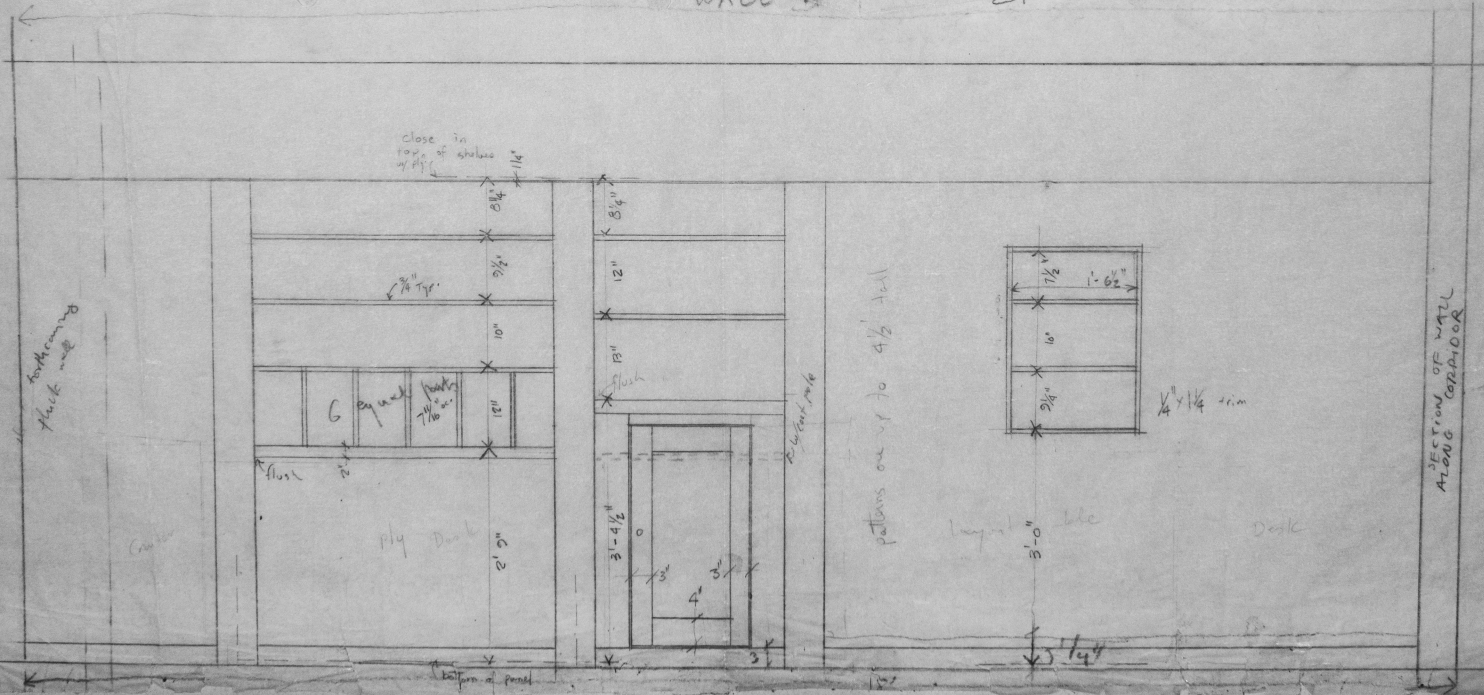


wall

21' total width of space



backcoming  
flush

close in  
top of shales  
w/ ply

3/8" Typ.

G equal parts  
7/16" dia.

flush

ply door

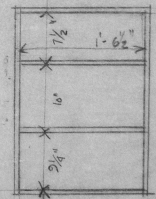
flush

2" x 2" x 1/2"

patterns on up to 4 1/2' tall

layed ble

door



4" x 1 1/4" trim

SECTION OF WALL  
ALONG CORRIDOR

conv