

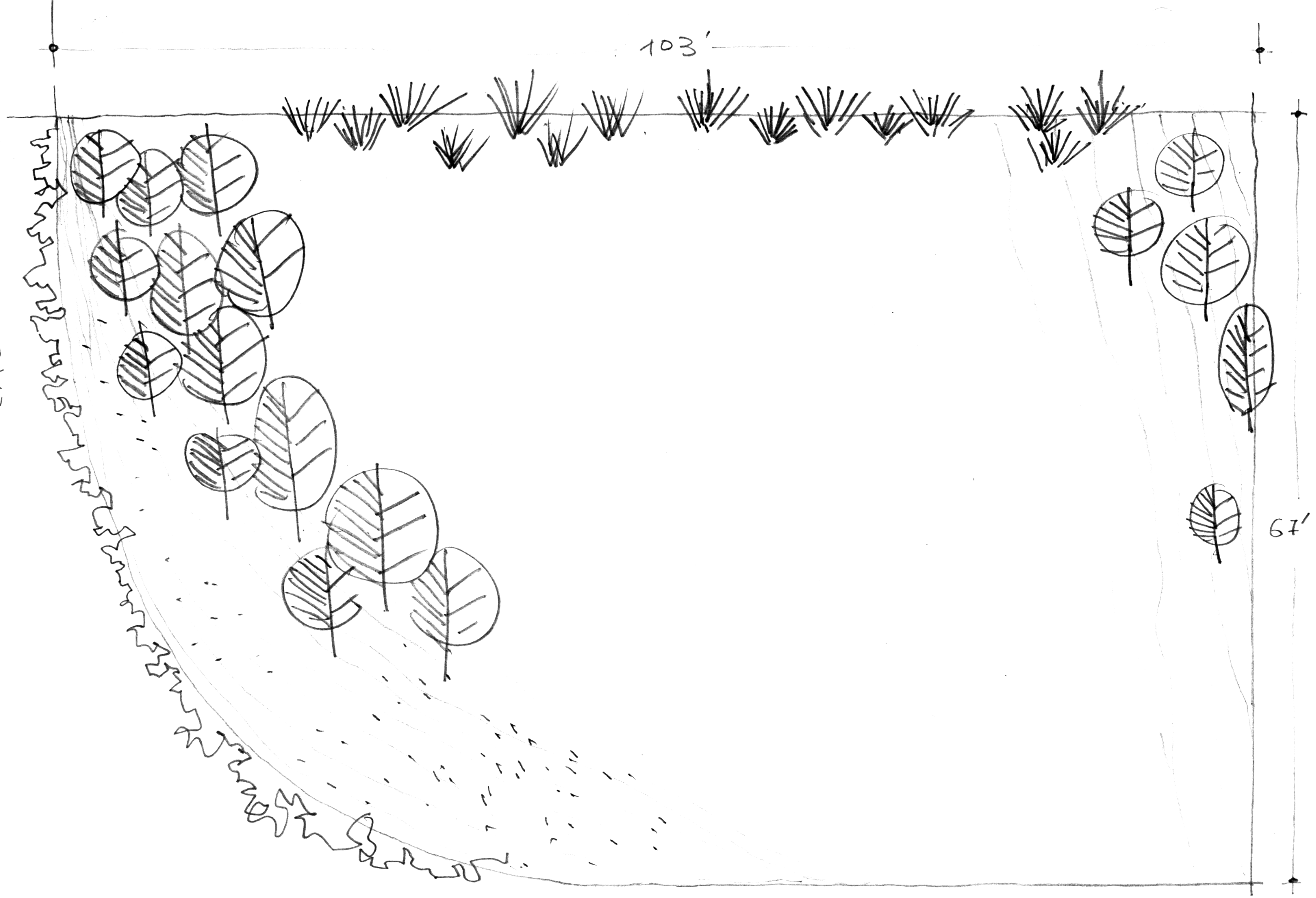
LALOMA

103'

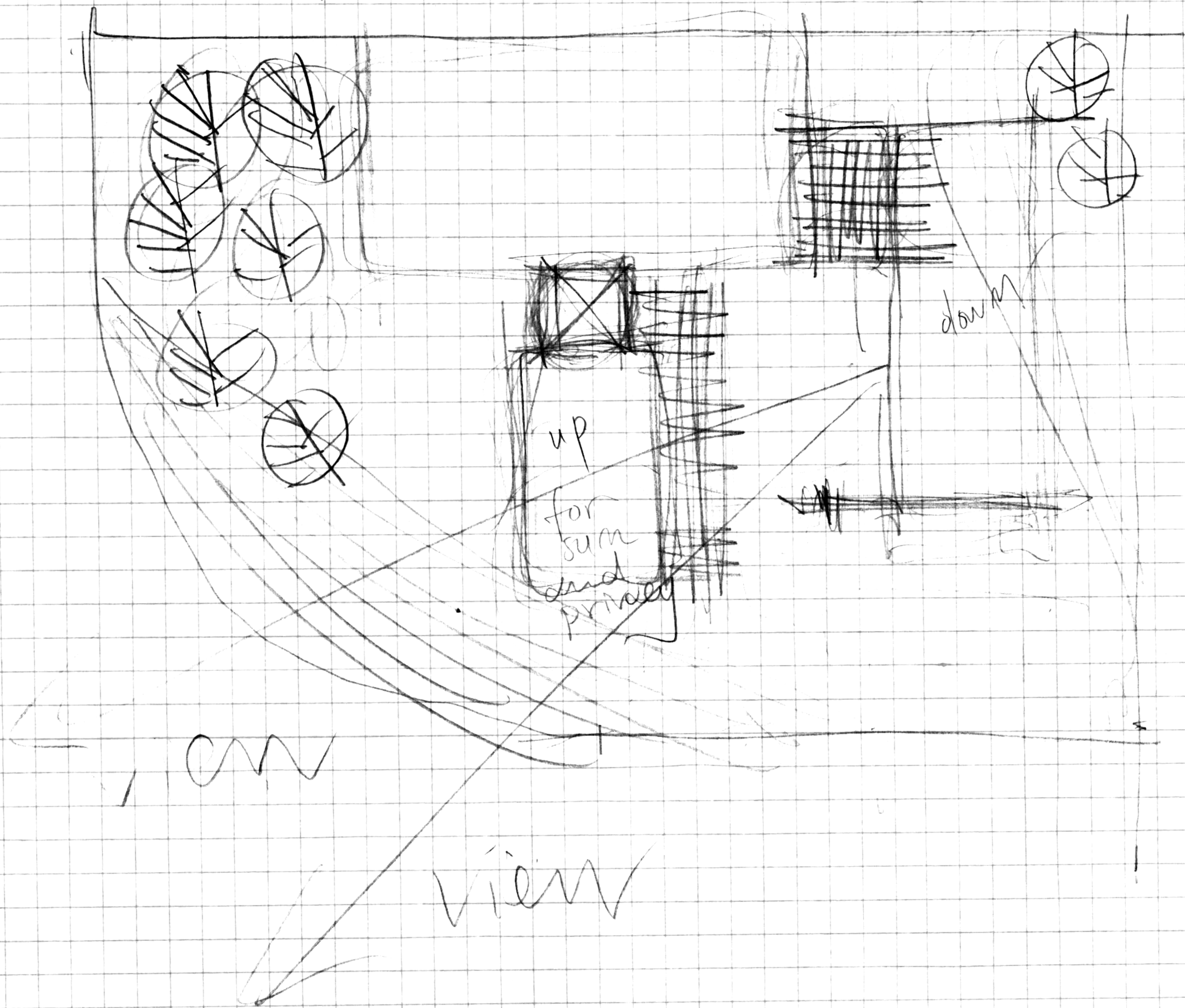
67'

HEARST

12 6.800 sq. f



14
30
17



East

street

3-4h

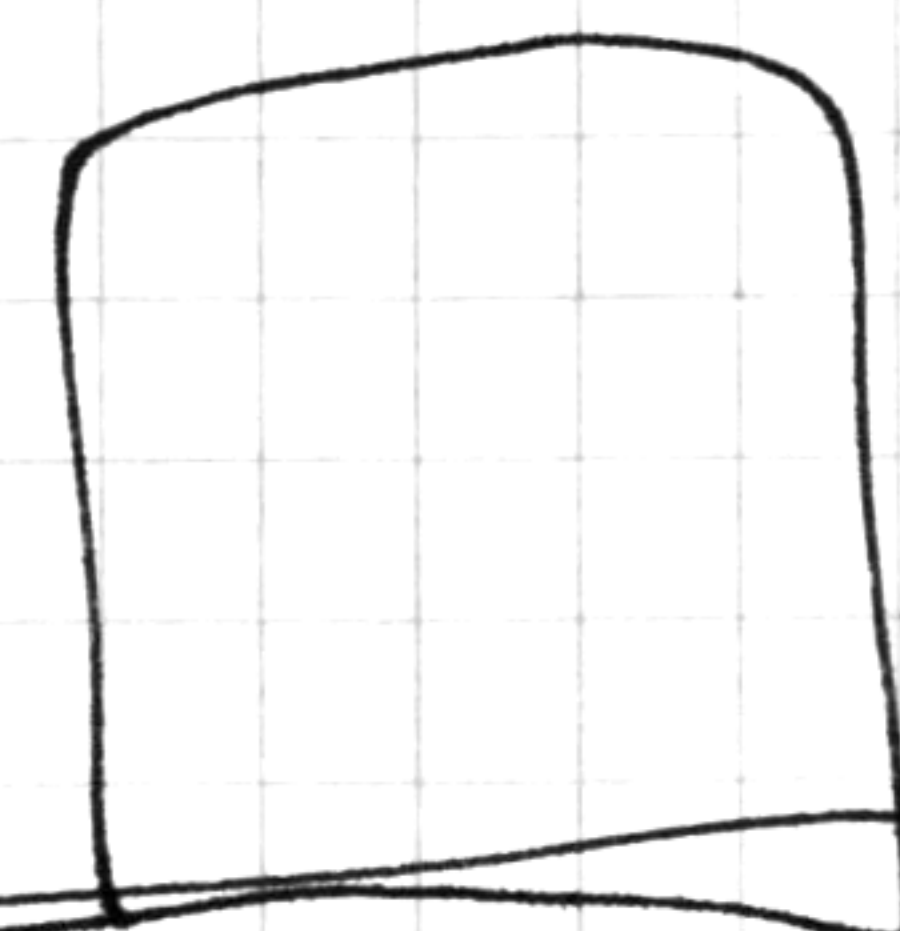
across road (10)

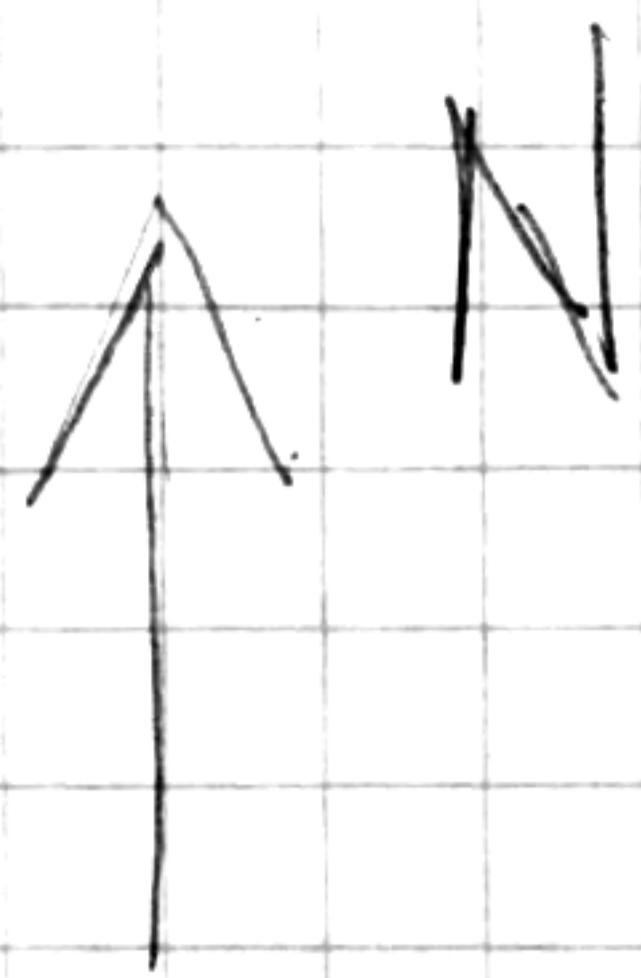
station
slope

32 by 24

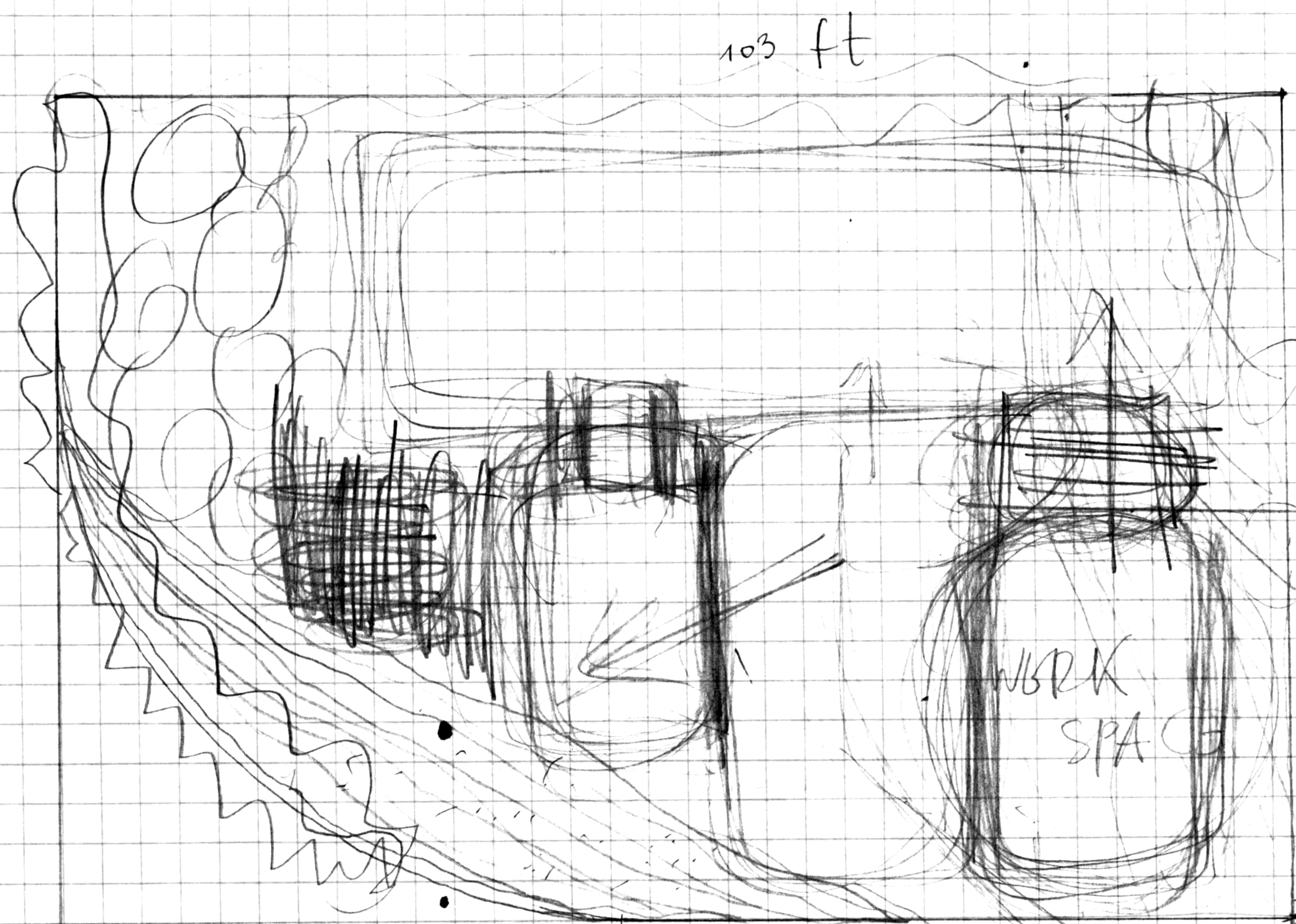
20

8 by 24
rain





68
17 x 10
102
17
10

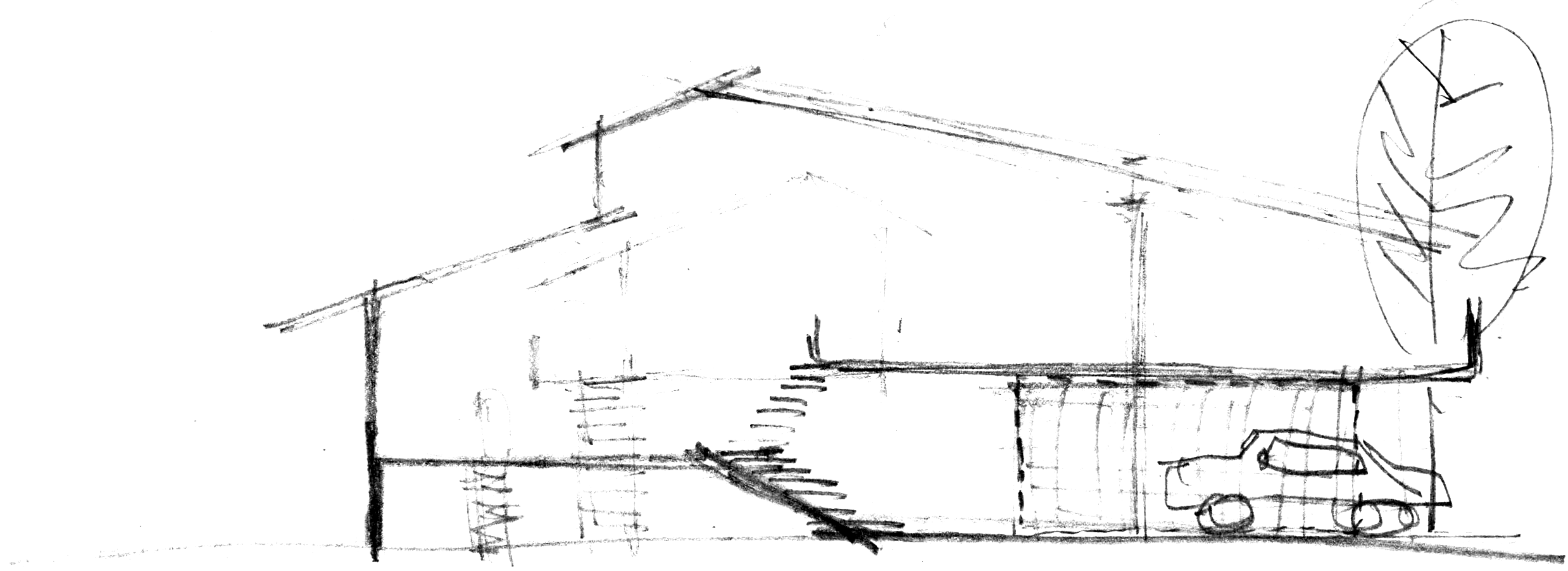


$$1750 \text{ sq. ft.}$$
$$\begin{array}{r} 1750 \overline{) 253} \\ \underline{20} \\ 70 \end{array}$$

25 x 70

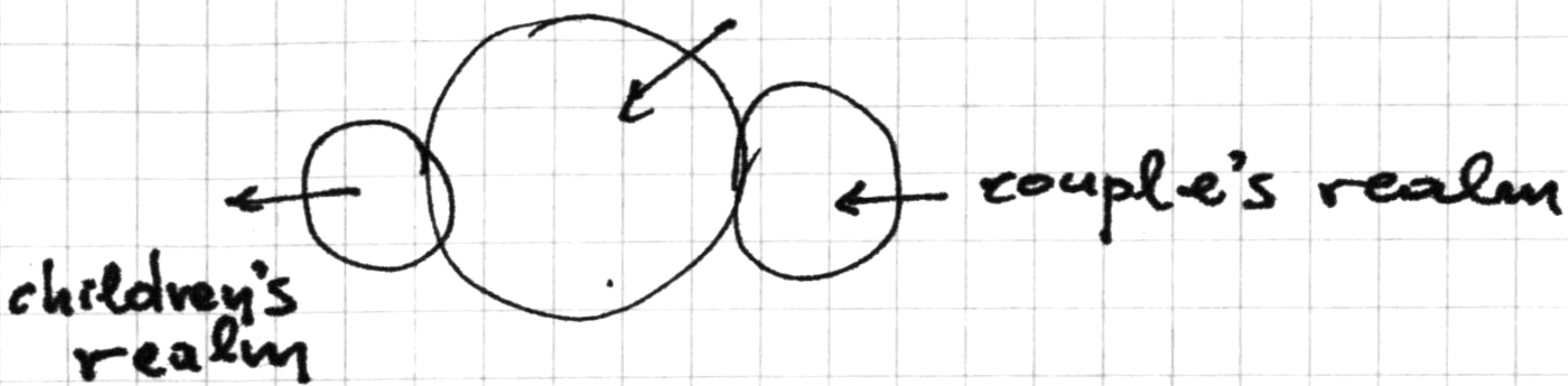
$$\begin{array}{r} 103 \\ \times 67 \\ \hline 721 \\ 618 \\ \hline 6901 \text{ sq. ft.} \end{array}$$





76 HOUSE FOR A SMALL FAMILY

- A couple's realm (reserved for the adults) 136
- A children's realm 137
- A common area [functions: eating together, sitting, games, bathing, gardening] 129



77 House for a couple

- A shared couple's realm (half-public, half intimate) 136
- Individual private worlds (entirely individual and private) 141

96 NUMBER OF STORIES

Rule I: Set a four-story height limit on the site

Rule II: For a given site do not let the ground area covered by building exceed 50% of the site.

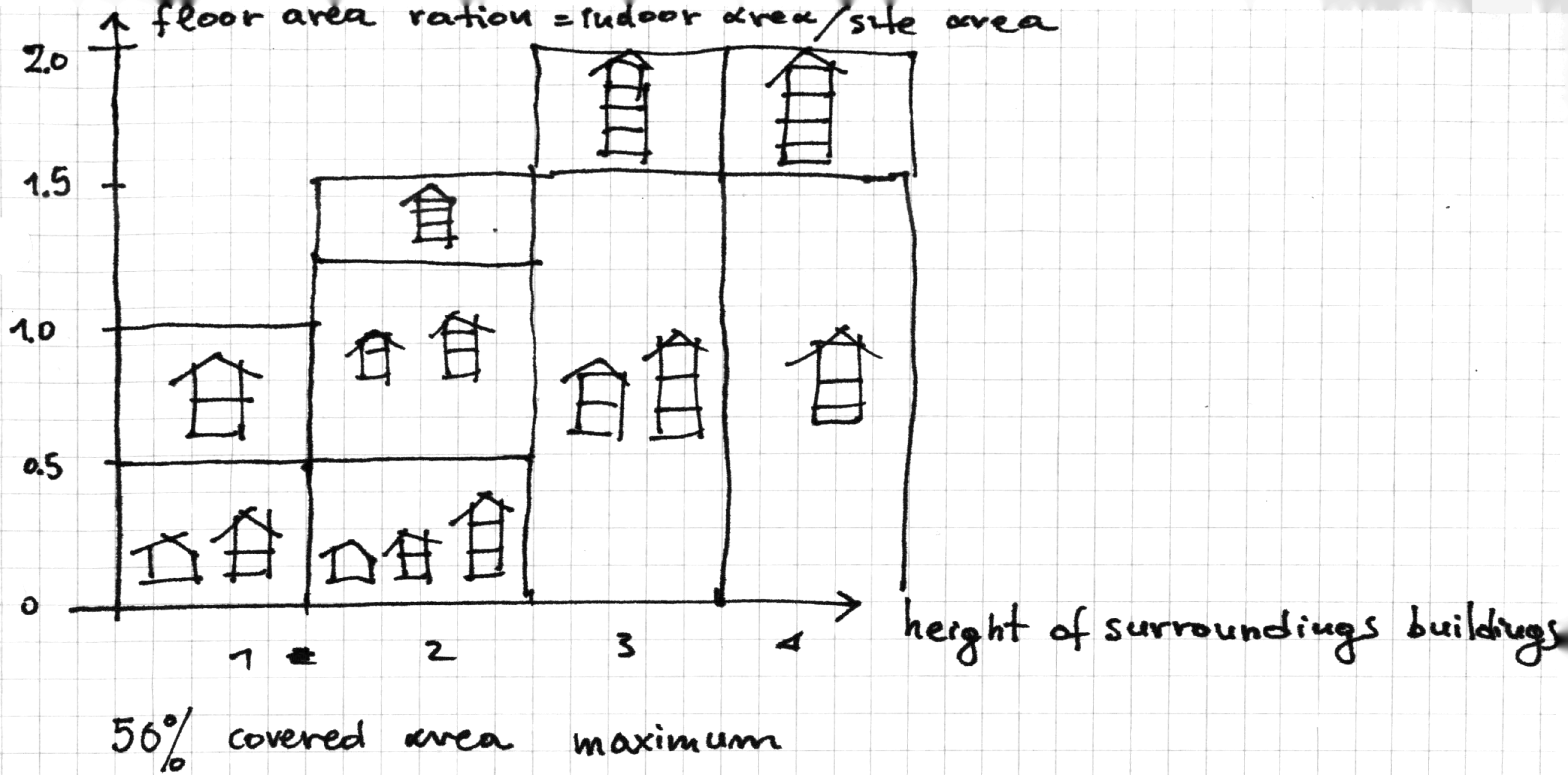
$$F.A.R \text{ (Floor area ratio)} = \frac{\text{indoor area}}{\text{site area}}$$

50% covered area

}	single story building	=	$\frac{\frac{1}{2}}{1} = \frac{1}{2} = 0.5$
	two " "	=	$\frac{\frac{1}{2} \cdot 2}{1} = 1.0$
	three " "	=	$\frac{\frac{1}{2} \cdot 3}{1} = \frac{3}{2} = 1.5$
	four " "	=	$\frac{\frac{1}{2} \cdot 4}{1} = \frac{4}{2} = 2$

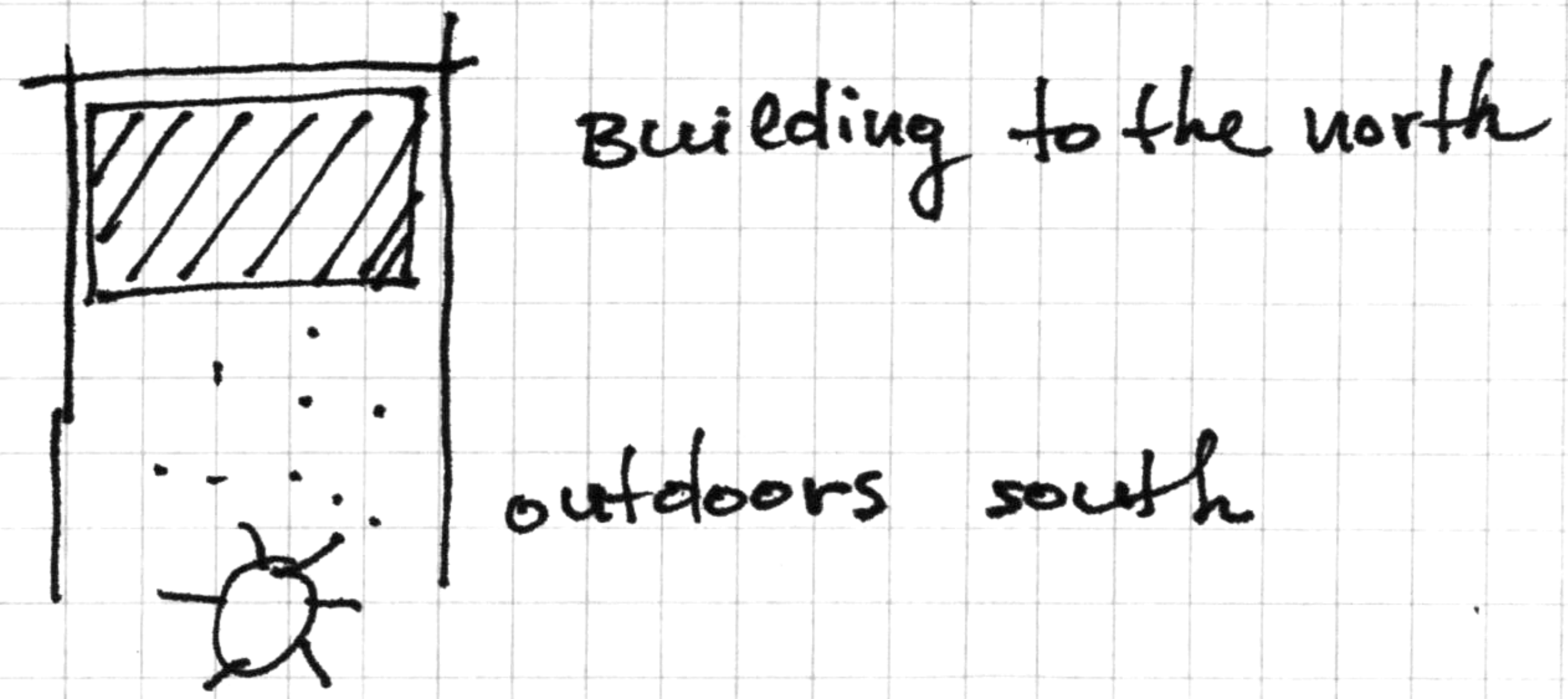
Rule III: Do not let the height of your building(s) vary too much from the predominant height of surrounding buildings.

F.A.R e.g. $\frac{180 \text{ sq. feet}}{100} = 1.8$ + 50% covered area \Rightarrow 4 story building



98. CIRCULATION REALMS

105 SOUTH FACING OUTDOORS



106 POSITIVE OUTDOOR SPACE

107 WINGS OF LIGHT

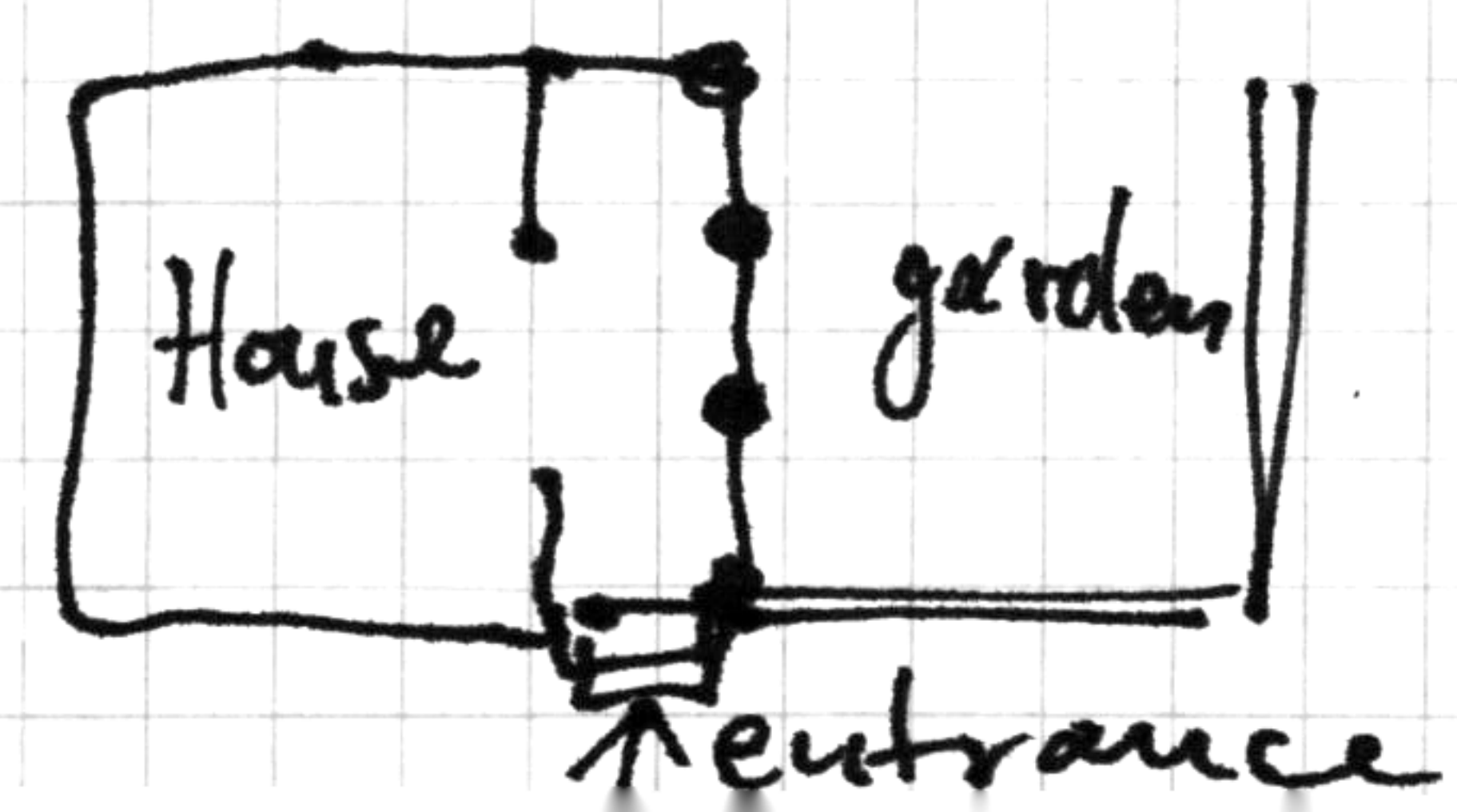
Maximum width of the wing: 25 feet [25 = 750] 7.5 meters
[30 = 750]

109 LONG THIN HOUSE

- horizontally => thin long rectangle 8, 10, 12 feet 2.4, 3, 3.6 meters
- vertically => tall narrow tower

110 MAIN ENTRANCE

111 HALF-HIDDEN GARDEN
half-hidden from the street
and half-exposed



112 ENTRANCE TRANSITION

transition space between the street and the front door.

; 113. CAR CONNECTION

114 HIERARCHY OF OPEN SPACE

115 COURTYARDS WHICH LIVE

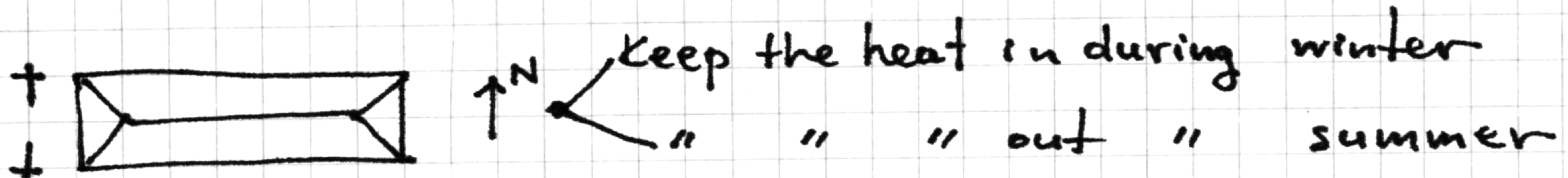
117 Sheltering Roof

119 ARCADES

127 INTIMACY GRADIENT

Public areas ———> private areas

128 INDOOR SUNLIGHT



Common area S

Bedrooms S.E morning sun

Porch S.W.
Garden

129 COMMON AREAS AT THE HEART

130 ENTRANCE ROOM

131 THE FLOW THROUGH ROOMS

104 SITE REPAIR

132 SHORT PASSAGES

133 STAIRCASE AS A STAGE

134. ZEN VIEW

135 TAPESTRY OF LIGHT AND DARK.

; 136 COUPLE'S REALM

138 SLEEPING TO THE EAST

; 139 FARMHOUSE KITCHEN

' 140 PRIVATE TERRACE ON THE STREET

141 A ROOM OF ONE'S OWN

142 SEQUENCE OF SITTING SPACES

front door bench-entrance room - reception welcomes you - common areas
242 130 149 129

at the heart - short passages - farmhouse kitchen - small meeting room
129 132 139 151

children's realm - private terrace on the street - half-private office
137 140 152

-alcoves - couple's realm - a room of one's own - garden seat
179 136 141 176

/ 143. BED CLUSTER

144 BATHING ROOM

145 BULK STORAGE

20% of the whole building area

; **151** SMALL MEETING ROOMS

; 152 HALF-PRIVATE OFFICE

159 LIGHT ON TWO SIDES OF EVERY ROOM

160 BUILDING EDGE

161 SUNNY PLACE

162 NORTH FACE

163 OUTDOOR ROOM

164 STREET WINDOWS

167 SIX-FOOT BALCONIES $6 \times 2.54 = 15.24 \text{ m}$ 1.5m

168 CONNECTION TO THE EARTH

; 169 TERRACED SLOPE

170 FRUIT TREES