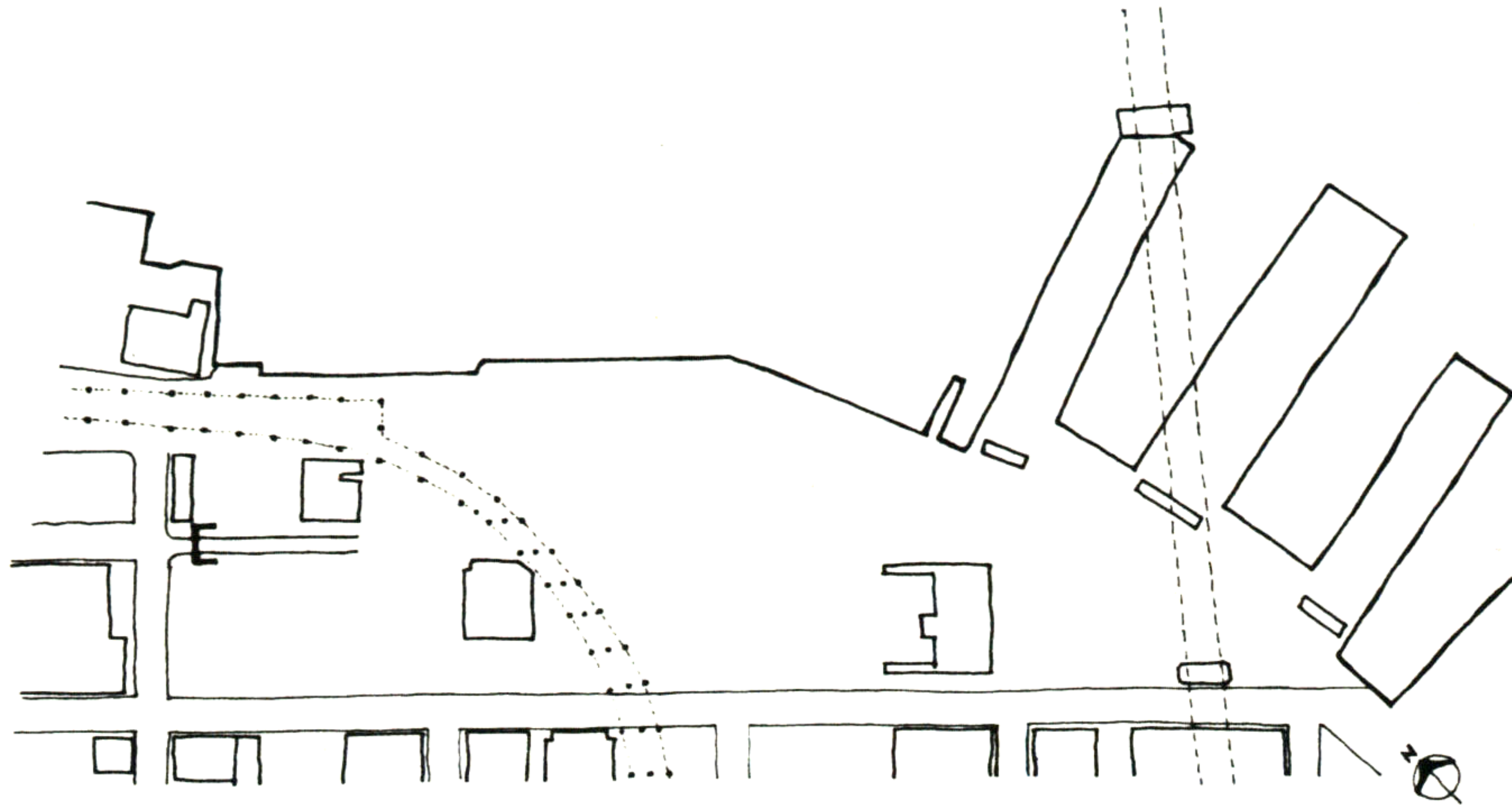


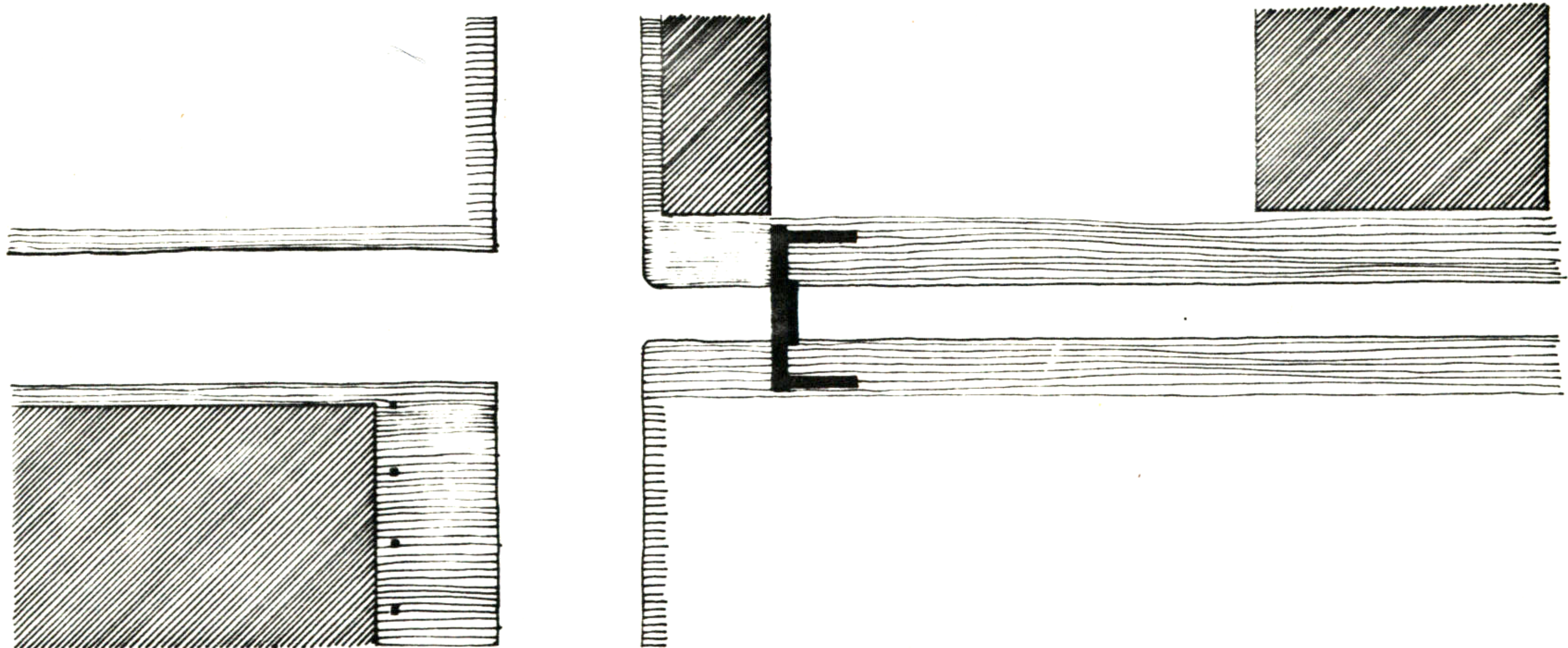
1. GATEWAY



I PROPOSE BUILDING A MAIN GATEWAY ENTERING THE SITE AT THE INTERSECTION OF STEWART AND MISSION.

THIS GATEWAY WILL MARK THE BEGINNING OF DEVELOPMENT AND WILL GIVE A CLEAR IDENTITY TO THE PROJECT. AS A GATEWAY, IT WILL REINFORCE THE BOUNDARY BETWEEN THE CITY'S EXISTING STRUCTURE AND THE DEVELOPMENT SITE. AT THE SAME TIME IT WILL PROVIDE A SMOOTH TRANSITION BETWEEN THE TWO BY CLEARLY DELINEATING PEDESTRIAN AND VEHICULAR PATHS.

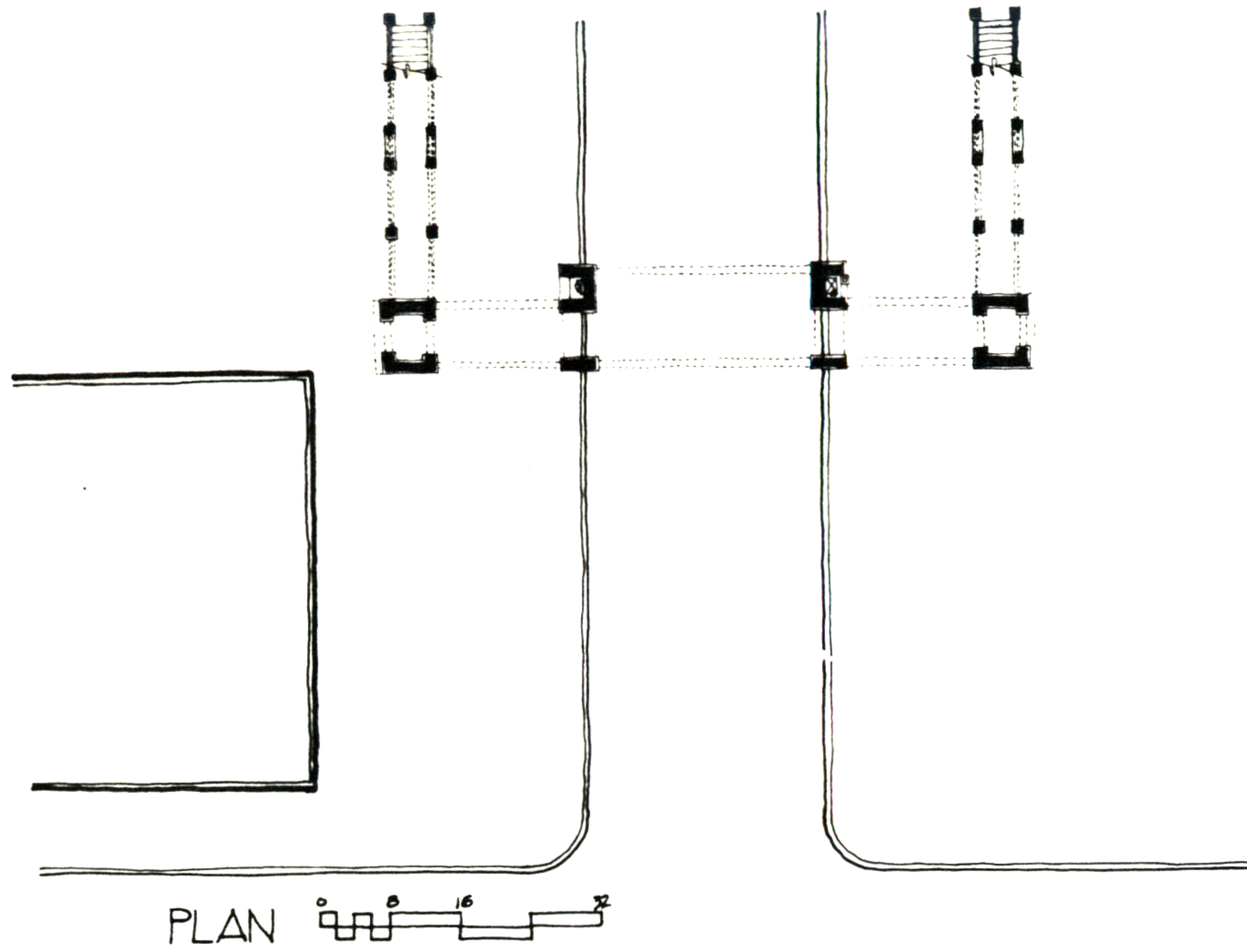
THE MAIN GATEWAY WILL BE SET BACK TO THE FAR EDGE OF THE EXISTING THREE STORY BUILDING, ABOUT 50 FEET, TO CREATE A FORECOURT. THIS FORECOURT WILL MAKE THE ENTRANCE MORE GRACIOUS AND WILL BUFFER THE ENTRANCE AND PEDESTRIAN PATHS FROM THE HEAVY CAR AND TRUCK TRAFFIC NOW RE-ROUTED ALONG MISSION STREET FROM THE EMBARCADERO.



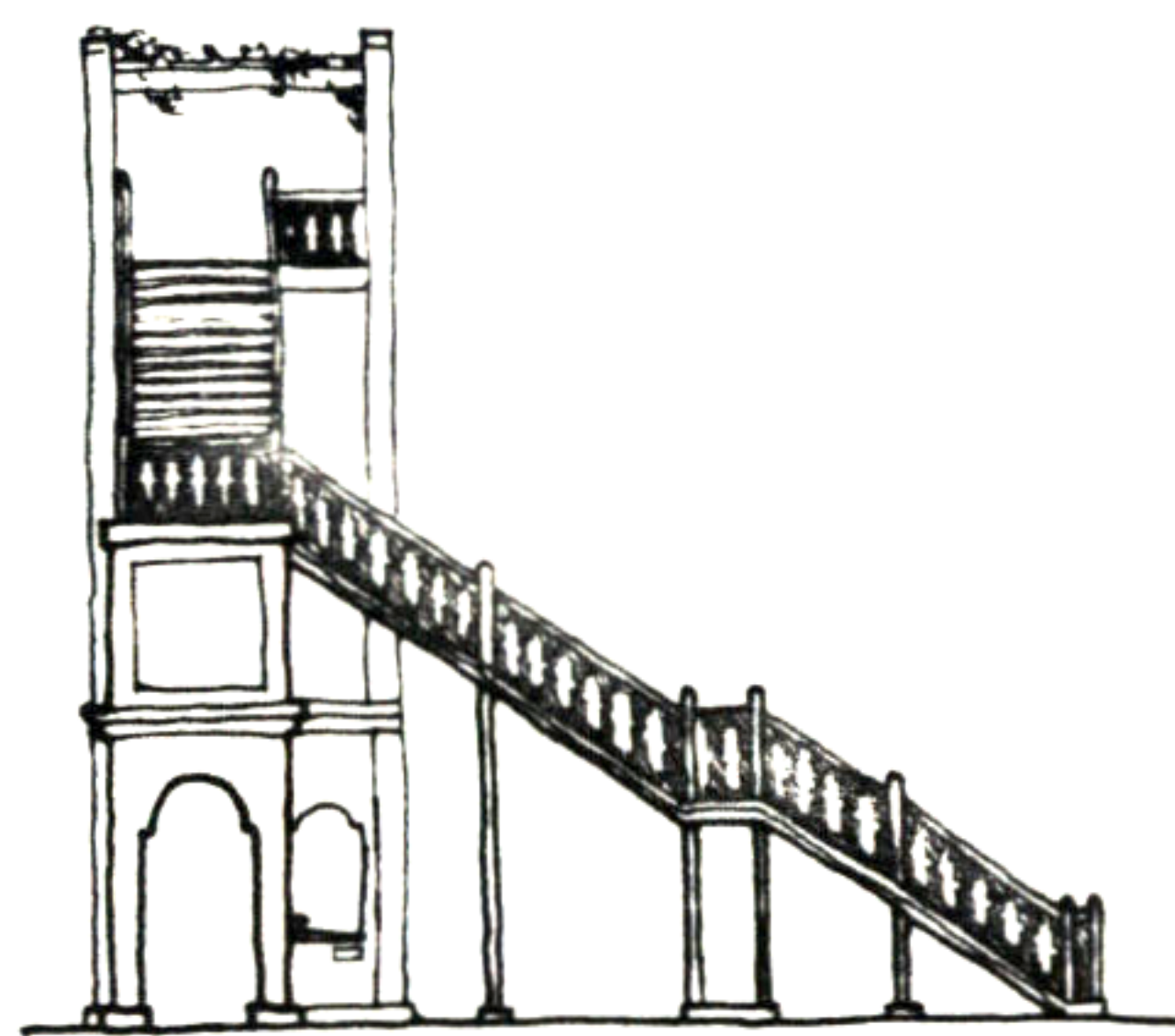
SITE PLAN 

Leslie G. Moldow

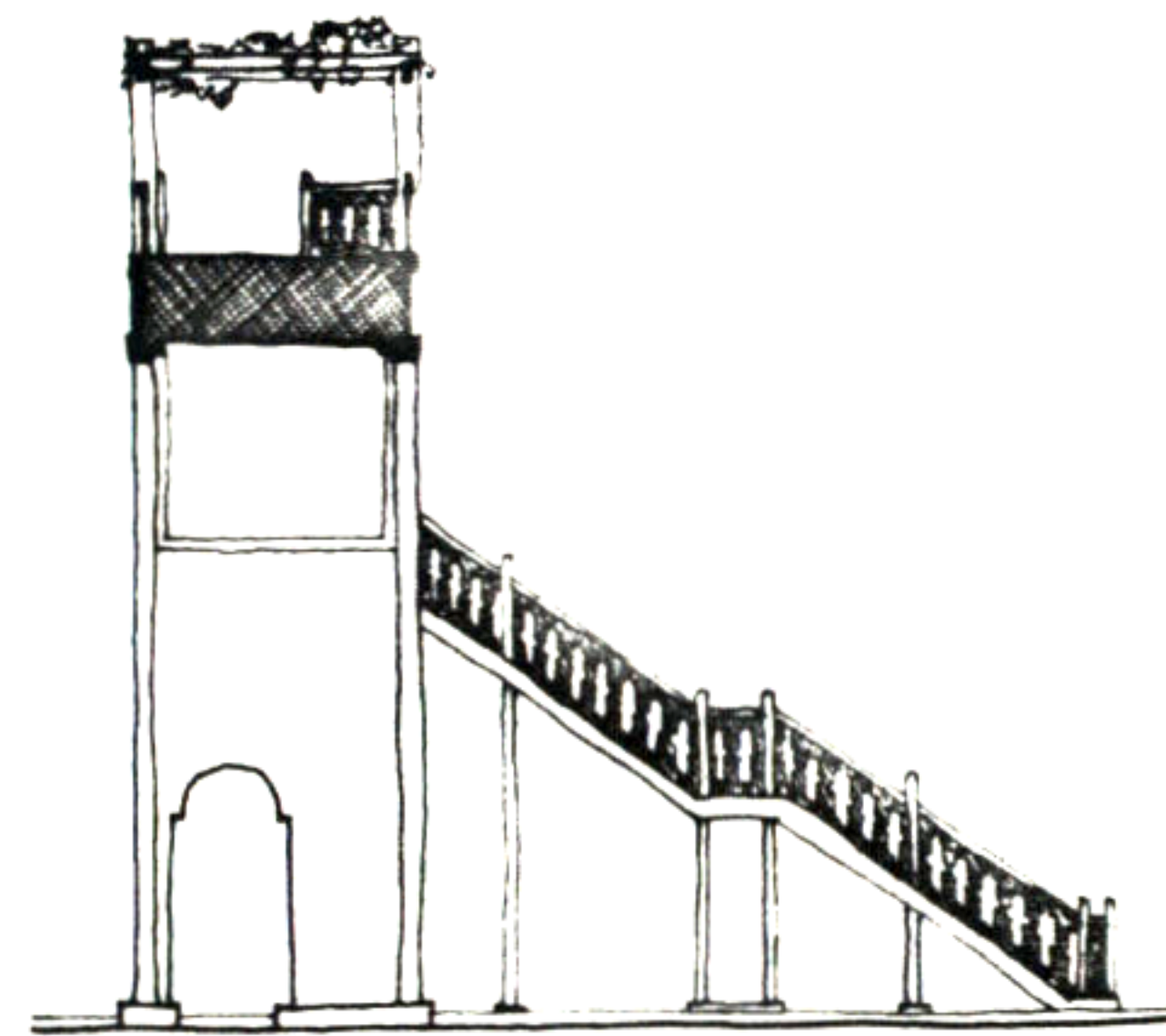
1. GATEWAY



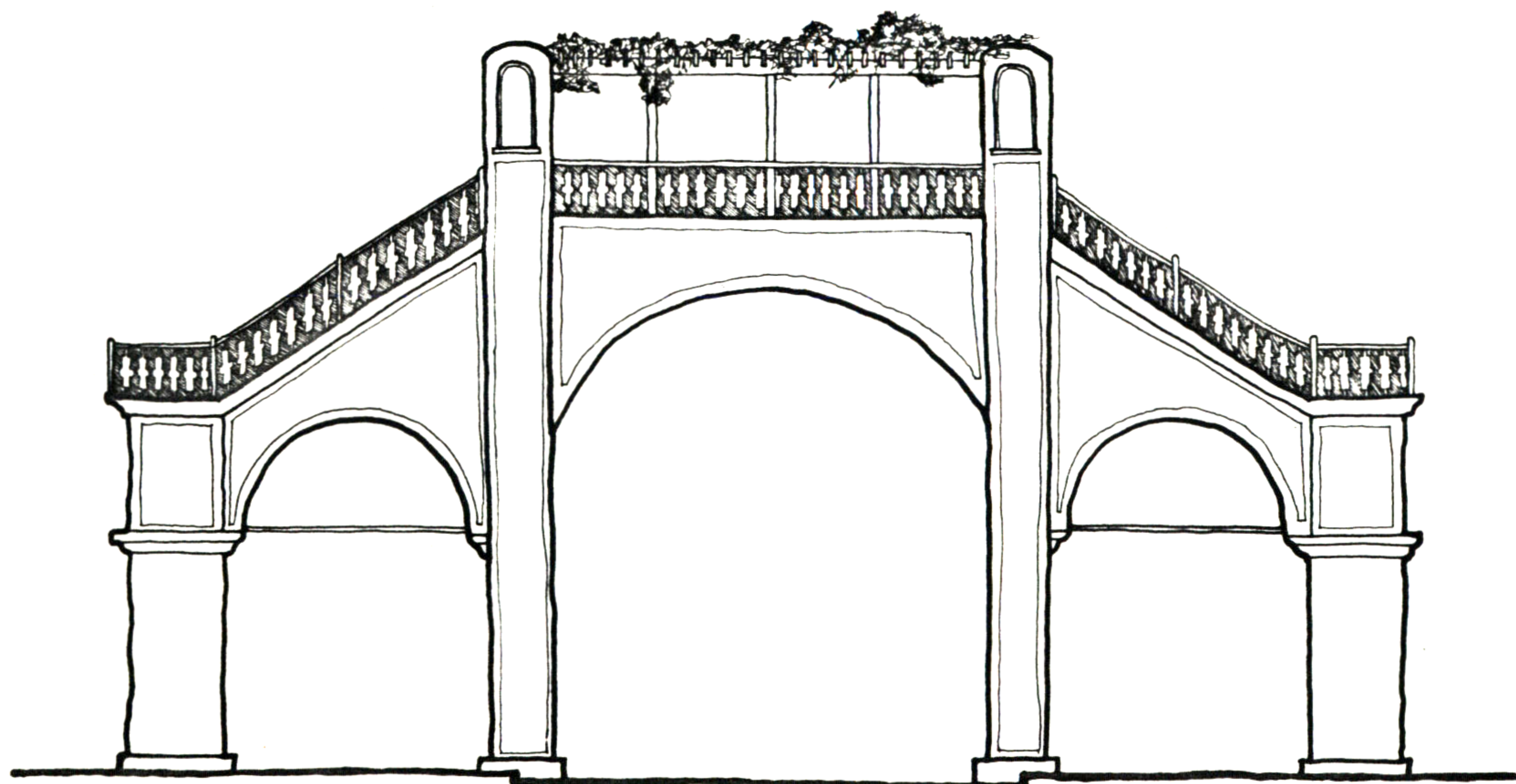
PLAN



SIDE ELEVATION



SECTION



ELEVATION

Leslie G. Moldow