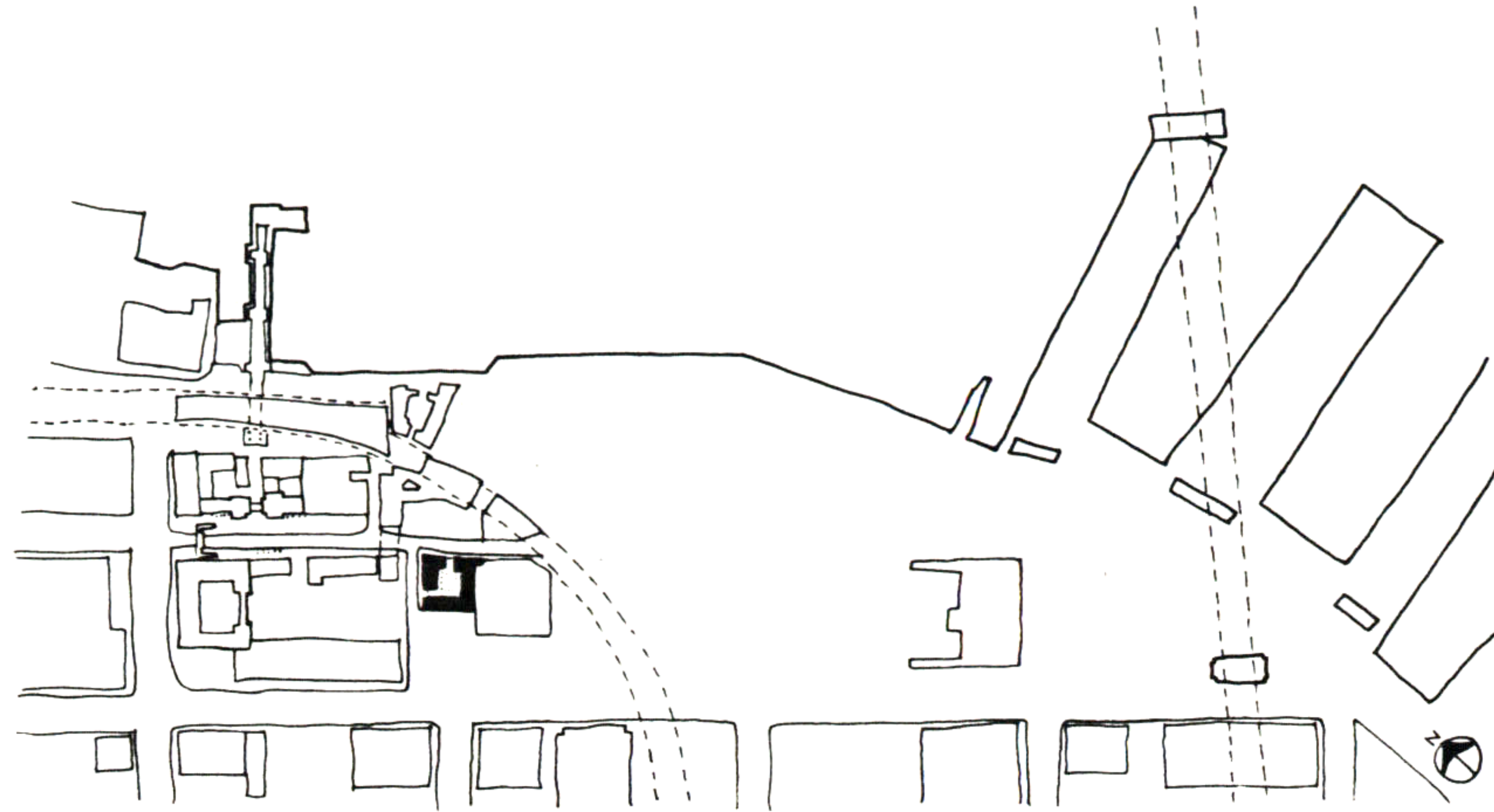


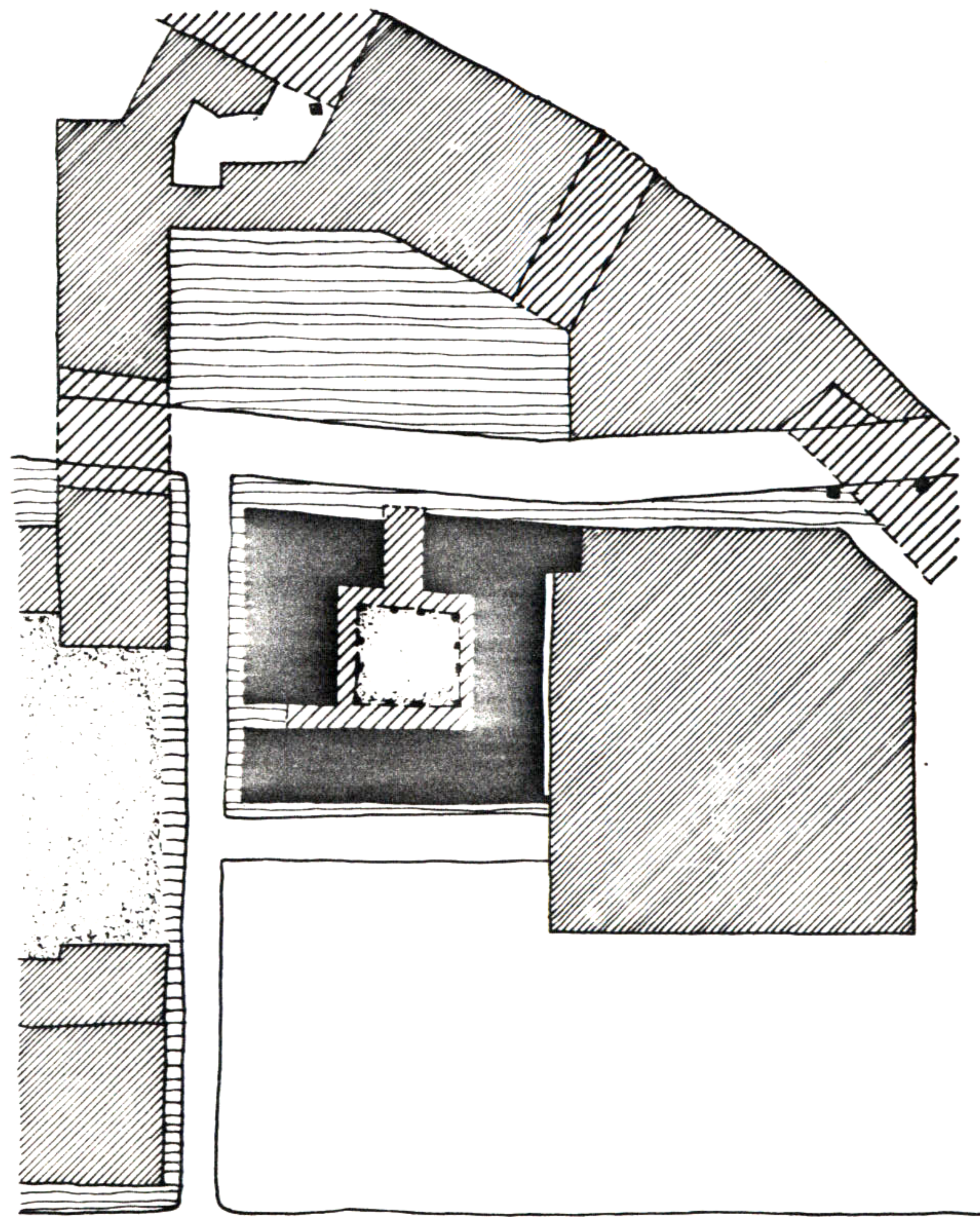
12. EDUCATIONAL CENTER



THE EDUCATIONAL CENTER WILL HOUSE AN OPEN SCHOOL AND SMALL LIBRARY FOR THE WATERPONT COMMUNITY AND SAN FRANCISCO AT LARGE.

THE CENTER'S CLASSROOMS, LIBRARY AND ADMINISTRATIVE OFFICES WILL SURROUND A QUIET OPEN GALLERYED COURTYARD. THERE WILL BE TWO ENTRANCES TO THIS COURTYARD. THE FIRST WILL BE LOCATED UNDER A CLOCK WHICH WILL FRONT THE COMMUNITY BANK PLAZA. THE SECOND ENTRANCE WILL BE LOCATED OFF OF THE SIDE STREET ADJACENT TO THE LIBRARY AND WILL VISUALLY CONNECT WITH THE GARDEN ACROSS THE STREET SO THAT PEOPLE MAY SIGN BOOKS OUT AND GO INTO THE GARDEN TO READ.

THE MAIN OFFICES, BOOK STORE, COPY SHOP, AND ASSOCIATED CRAFTSHOPS WILL OCCUPY THE GROUND FLOOR OF THE EDUCATION CENTER. STAIRS, WHICH WILL BE ENTERED FROM THE COURTYARD, AND THE GALLERIES WHICH WILL SURROUND THE COURTYARD, WILL PROVIDE CIRCULATION TO THE LIBRARY, CLASSROOMS AND AUDITORIUM ON THE UPPER FLOORS.

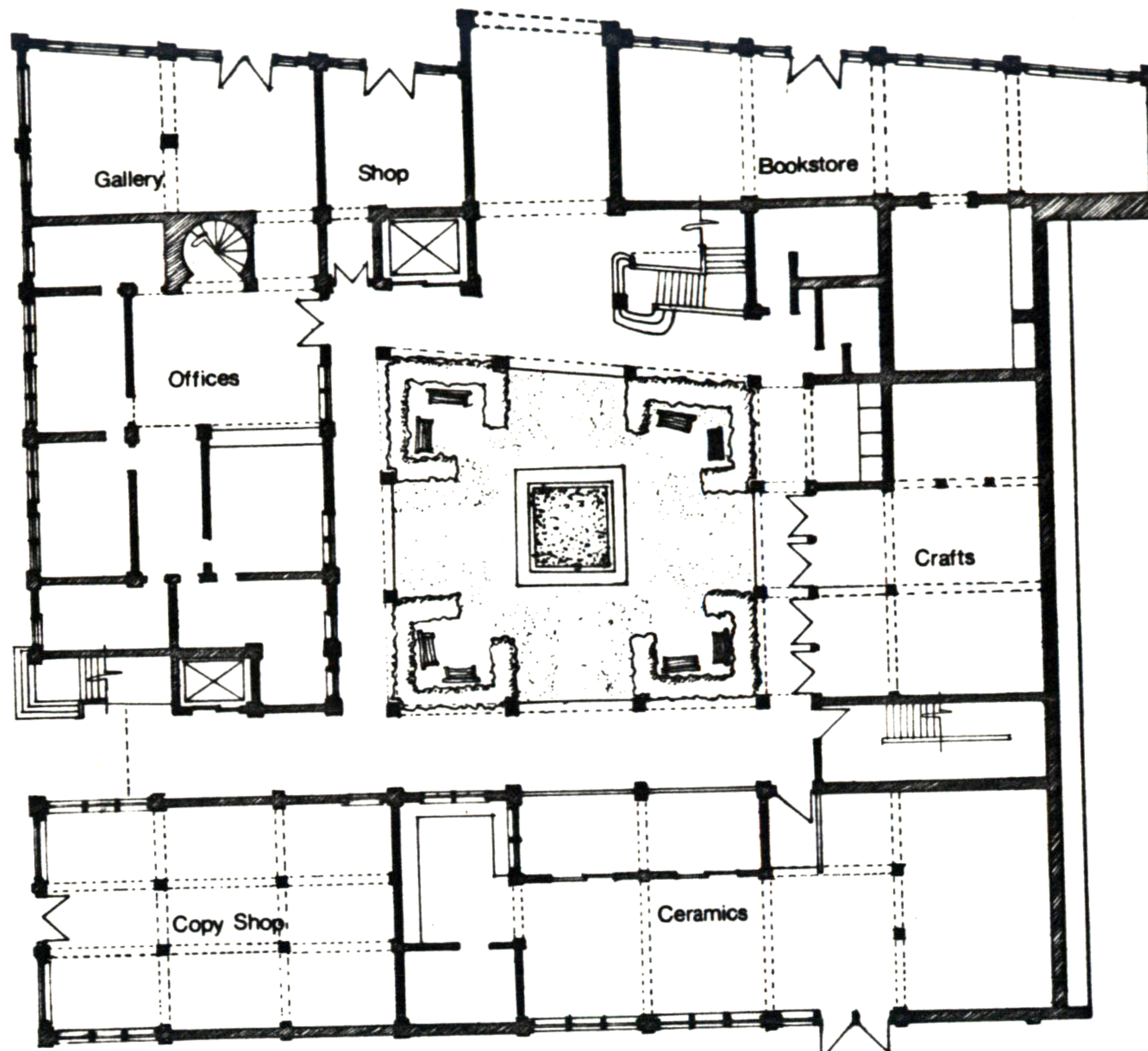


SITE PLAN



Leslie G. Moldow

12. EDUCATIONAL CENTER



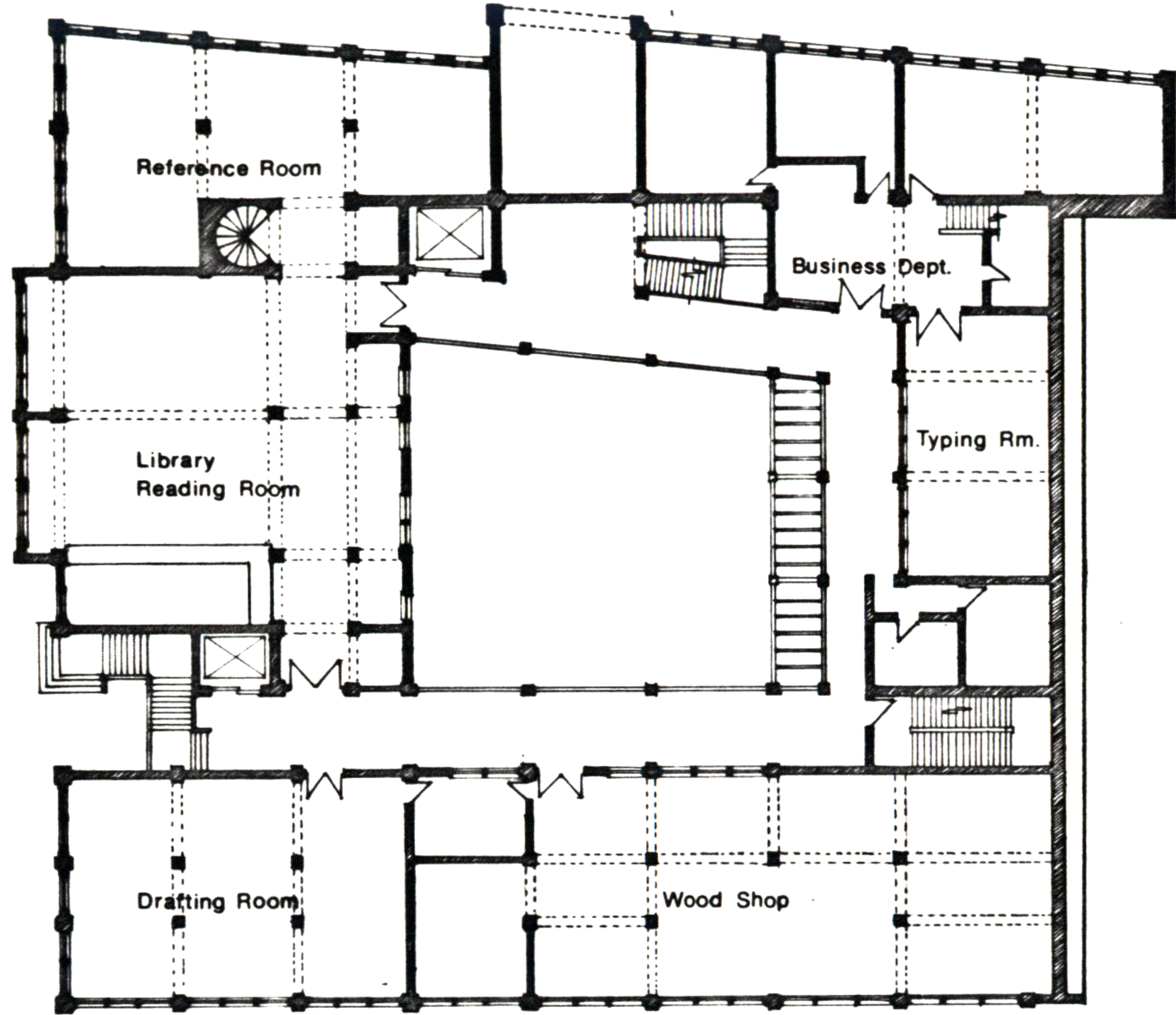
GROUND FLOOR PLAN



ELEVATION

Leslie G. Moldow

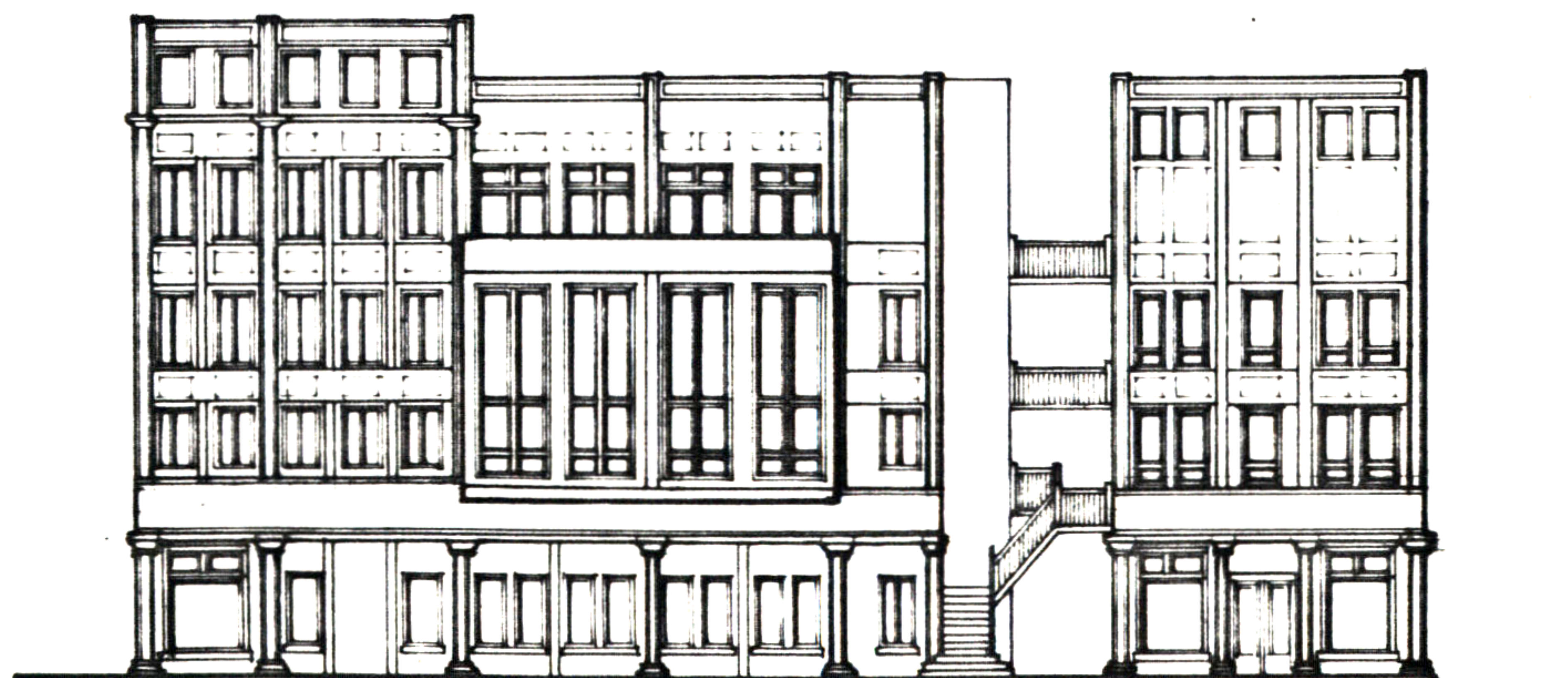
12. EDUCATIONAL CENTER



SECOND FLOOR PLAN



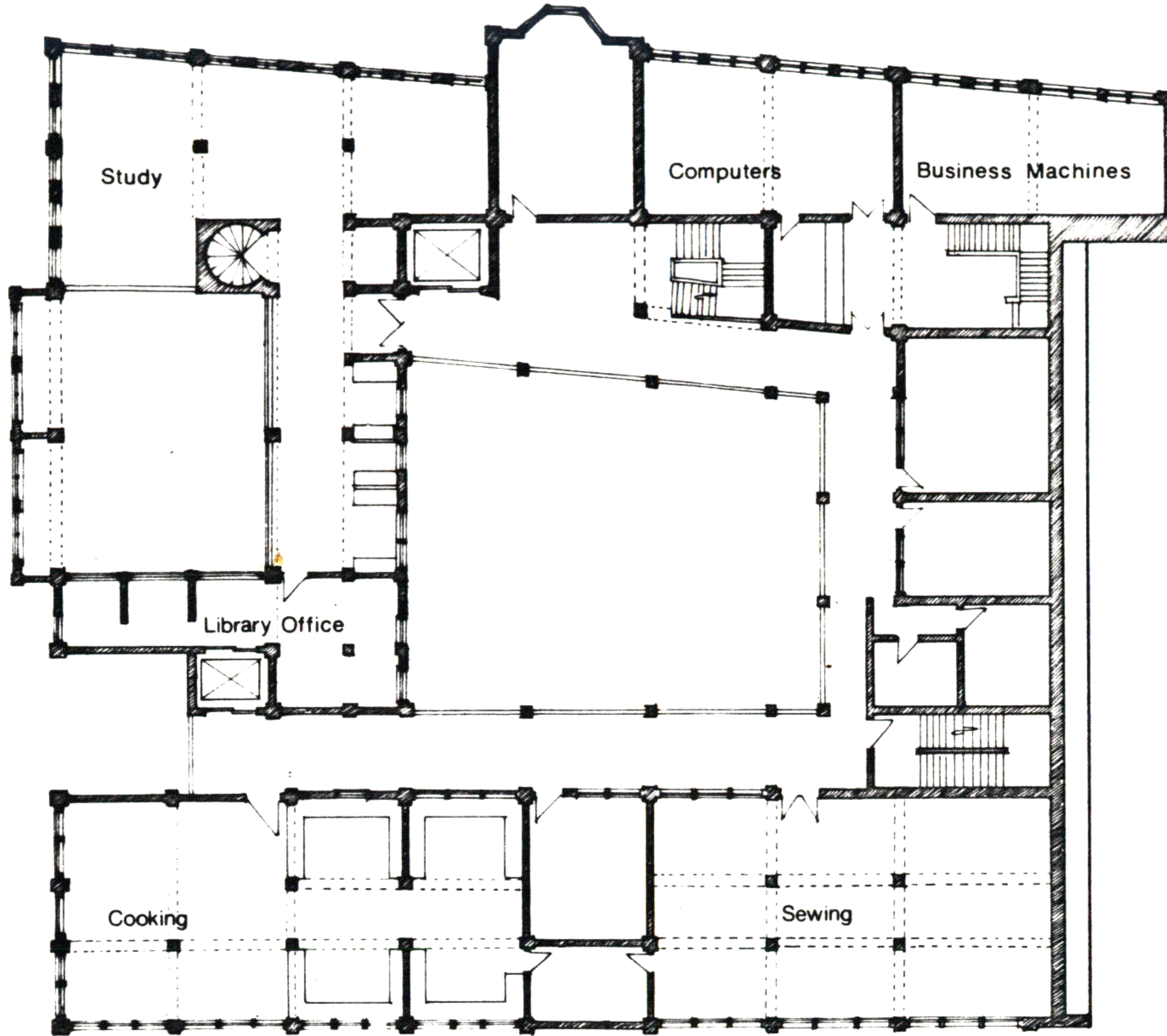
EAST ELEVATION



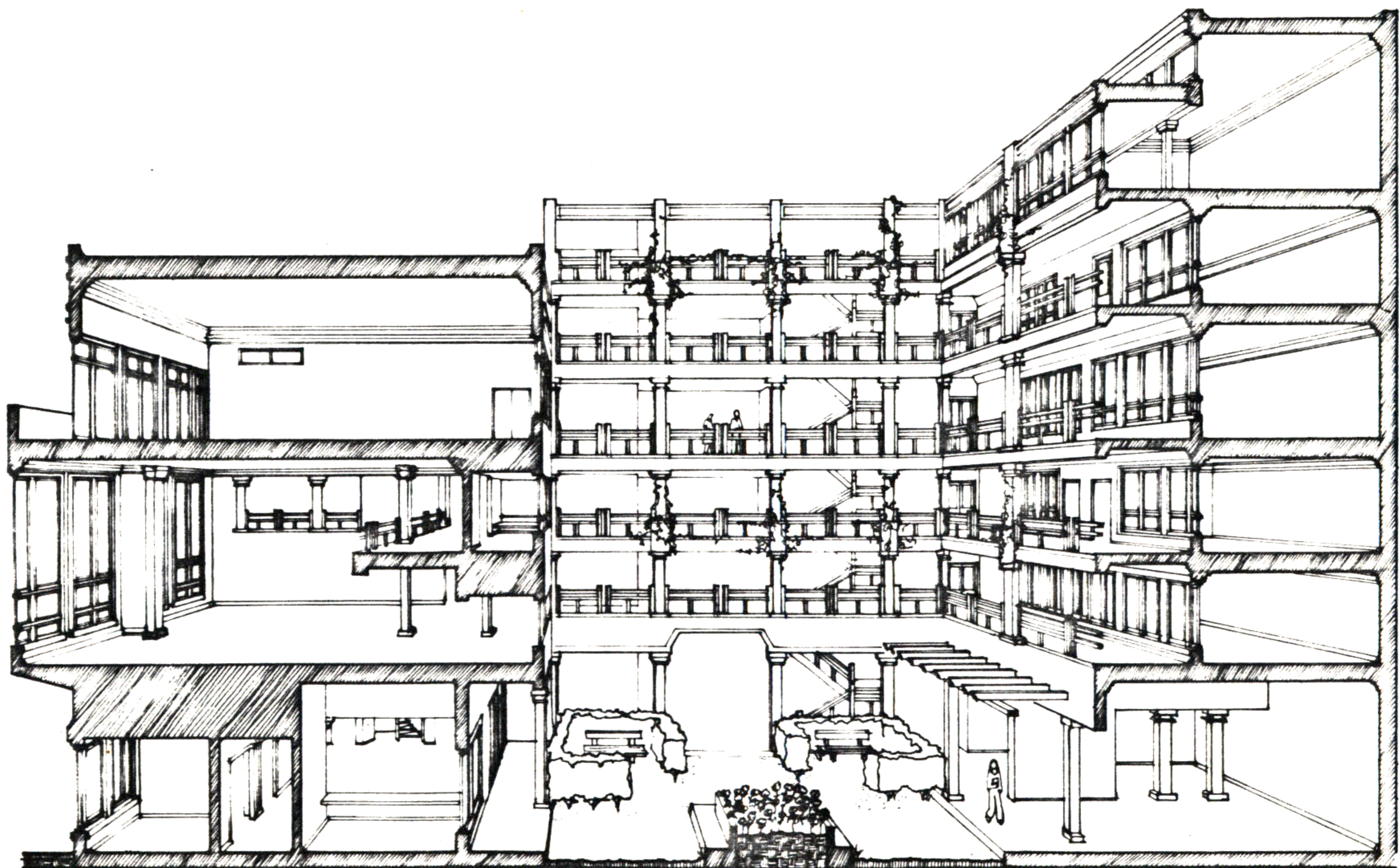
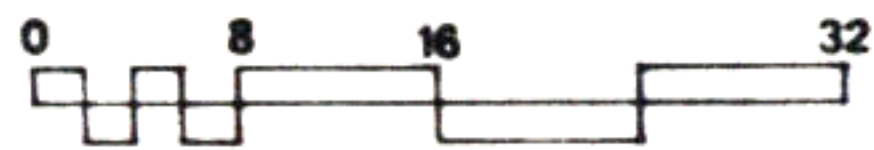
NORTH ELEVATION

Leslie G. Moldow

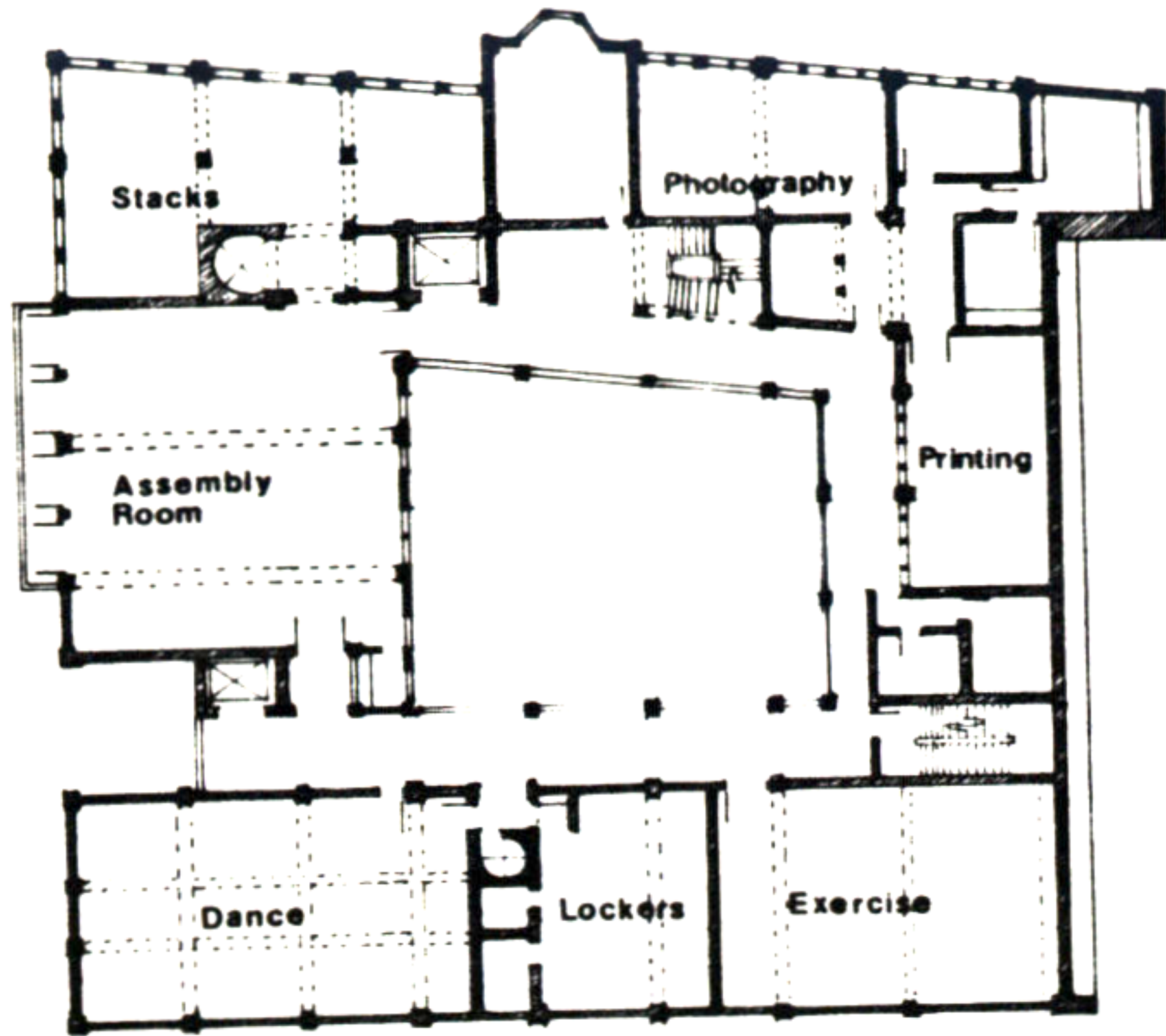
12. EDUCATIONAL CENTER



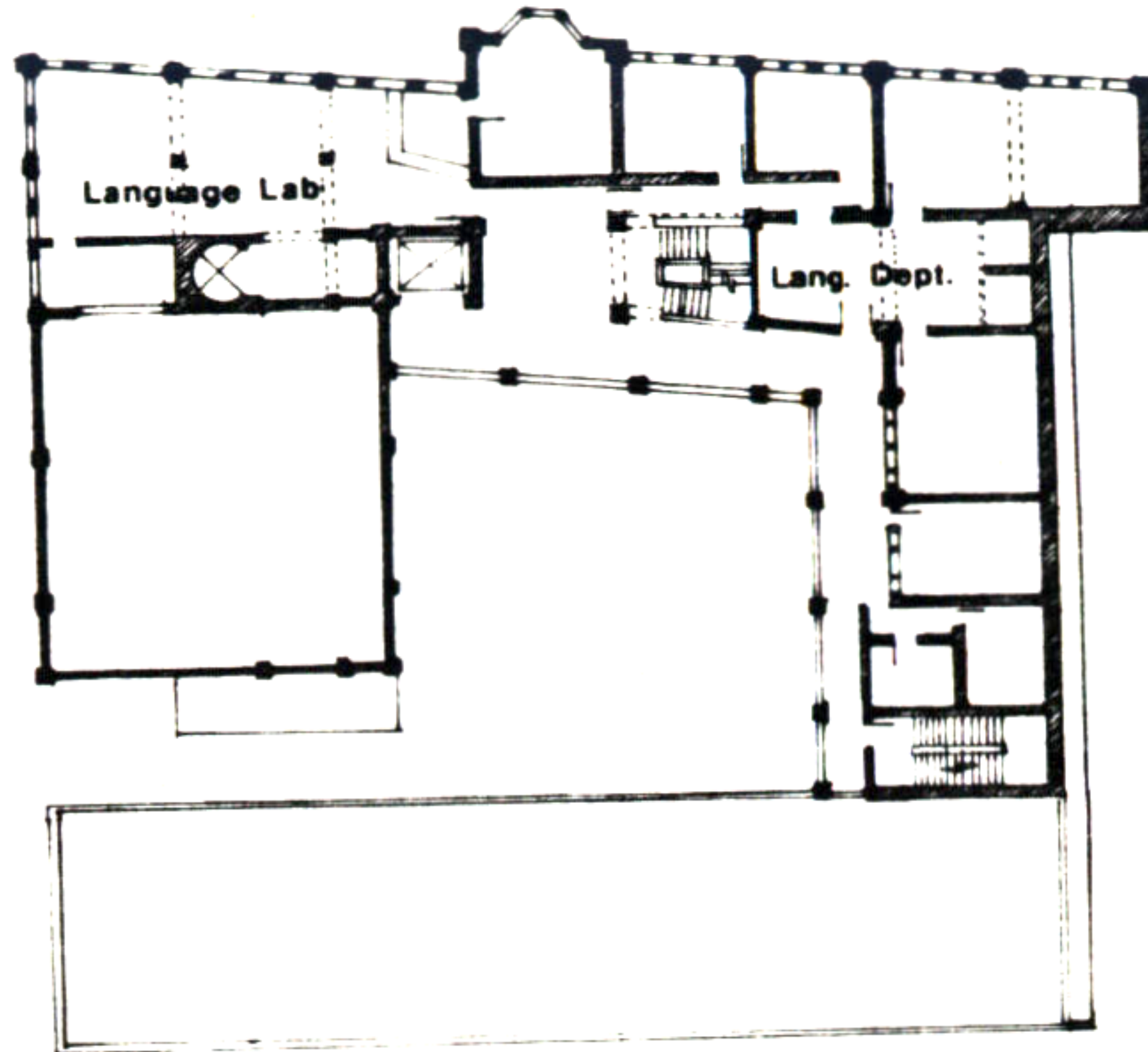
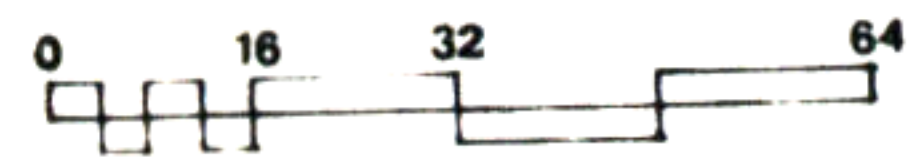
THIRD FLOOR PLAN



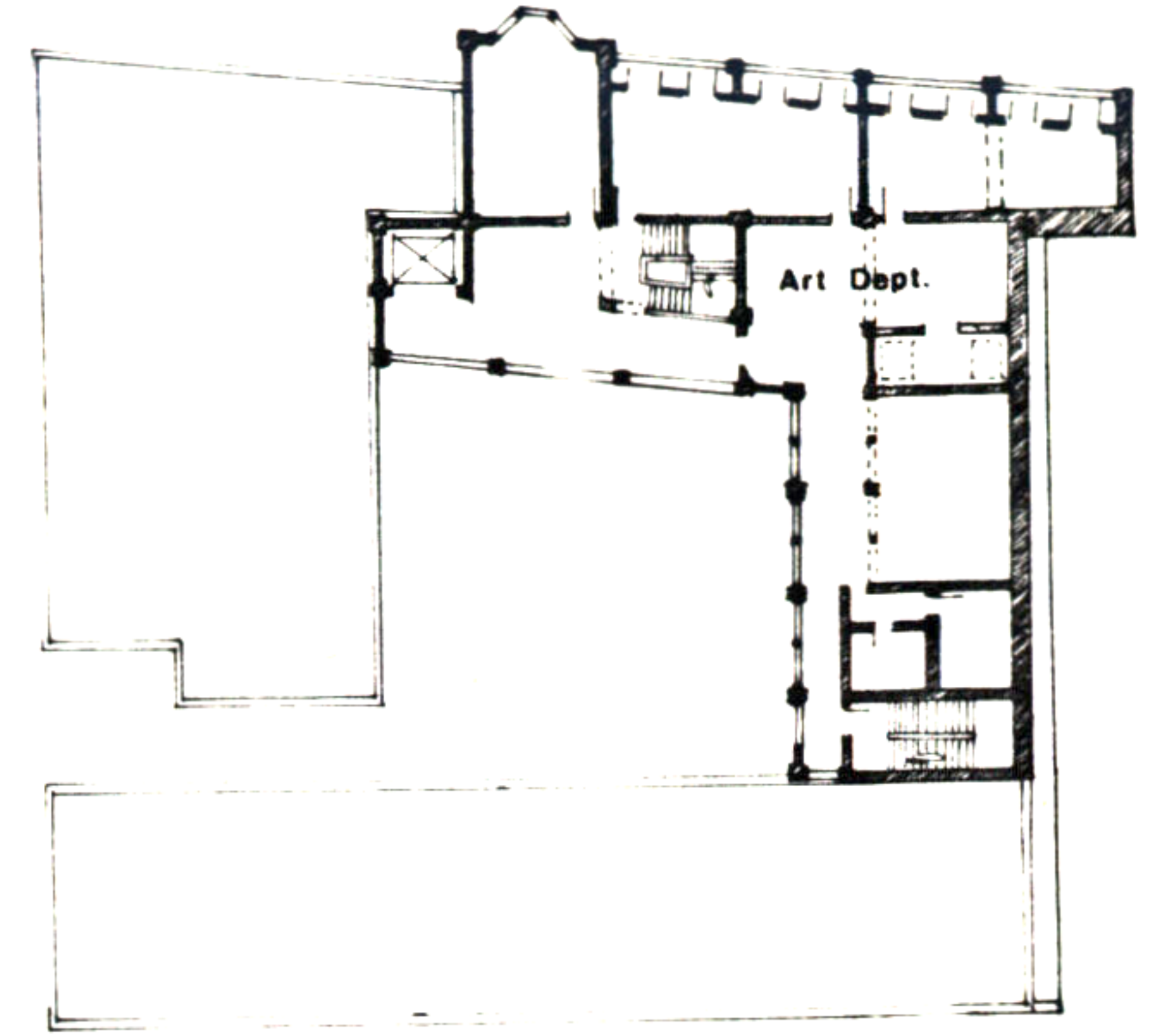
12. EDUCATIONAL CENTER



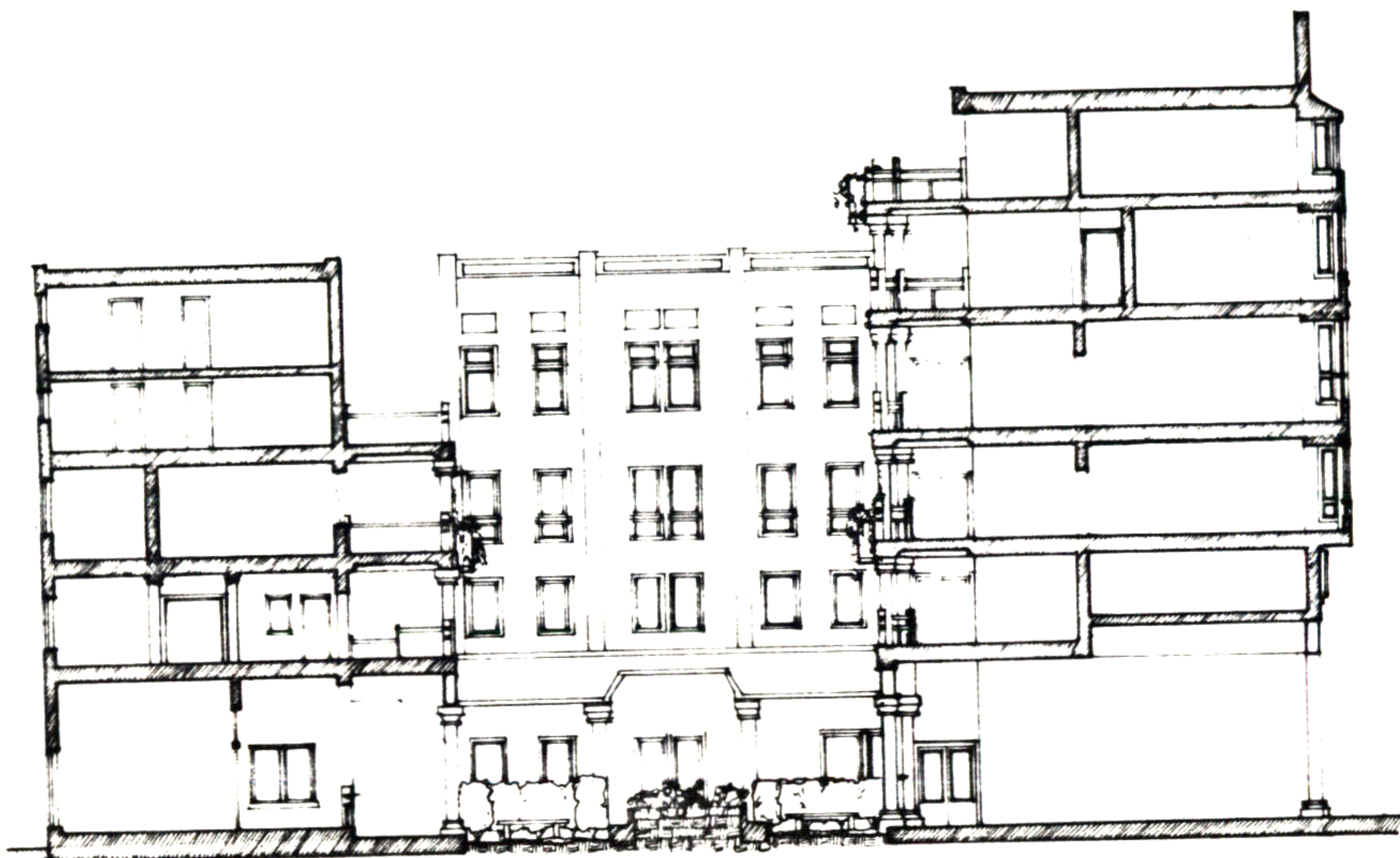
FLOOR PLANS: 3rd



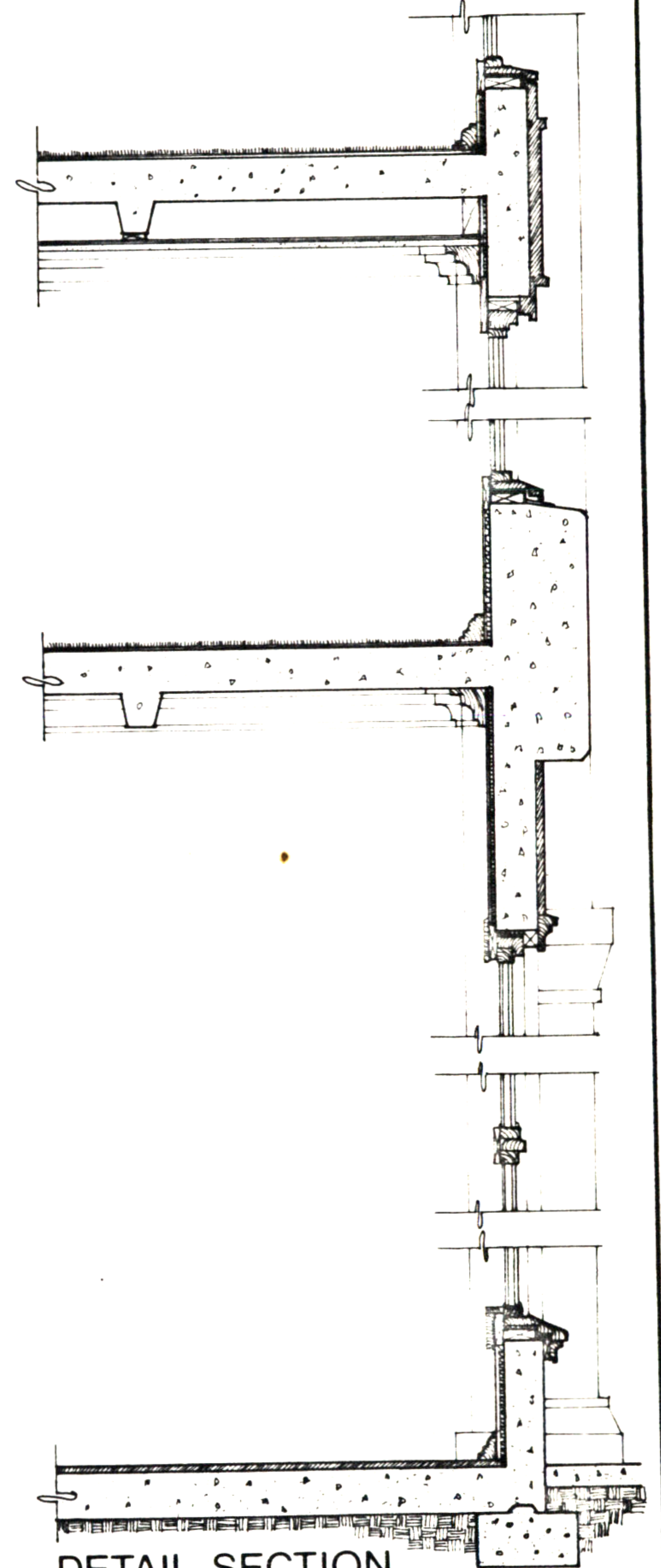
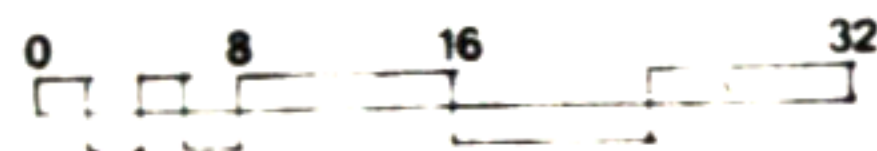
4th



5th



SECTION THROUGH COURTYARD



DETAIL SECTION



DETAIL PLAN

Leslie G. Moldow