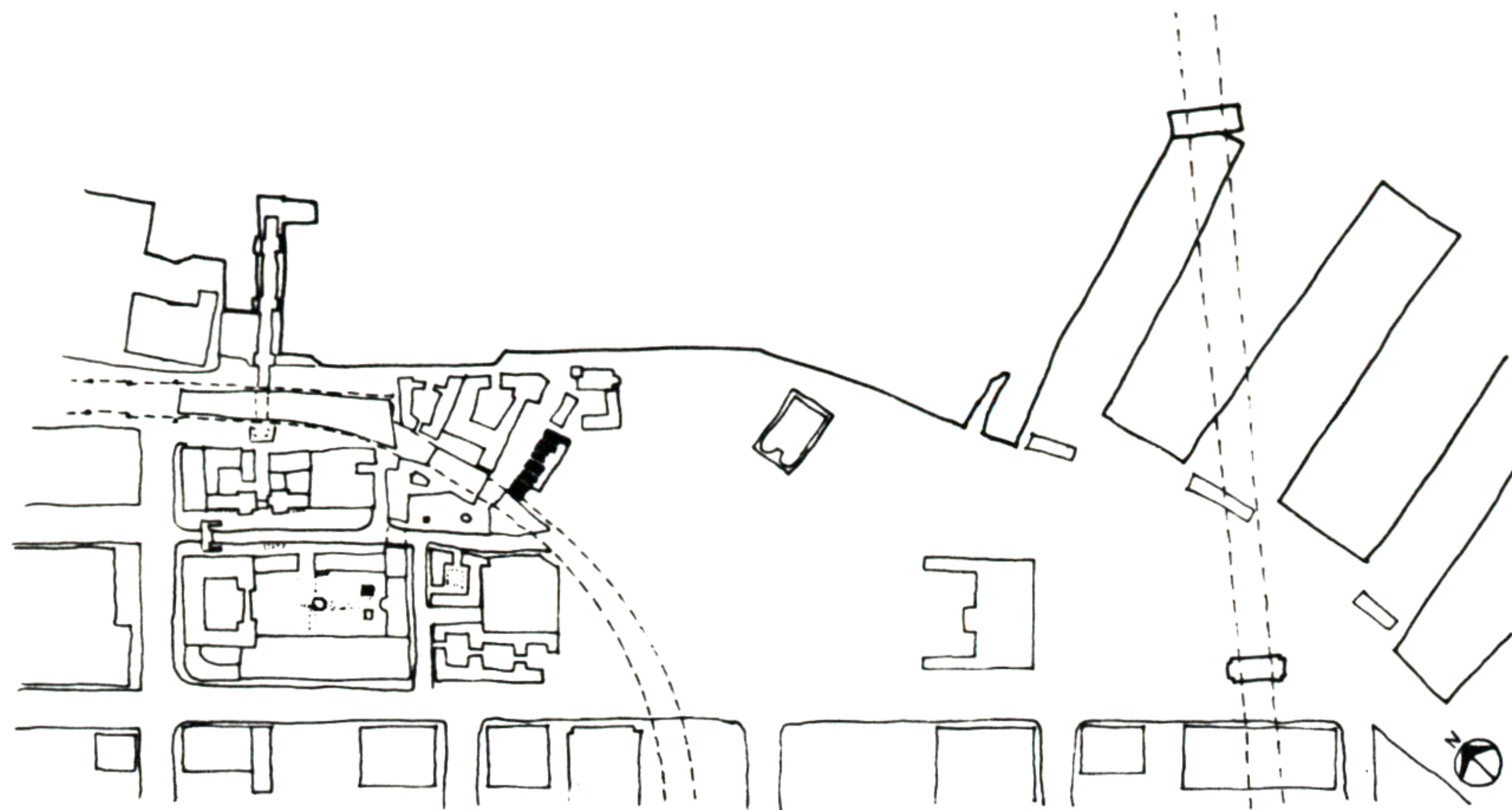


20. ROW HOUSES



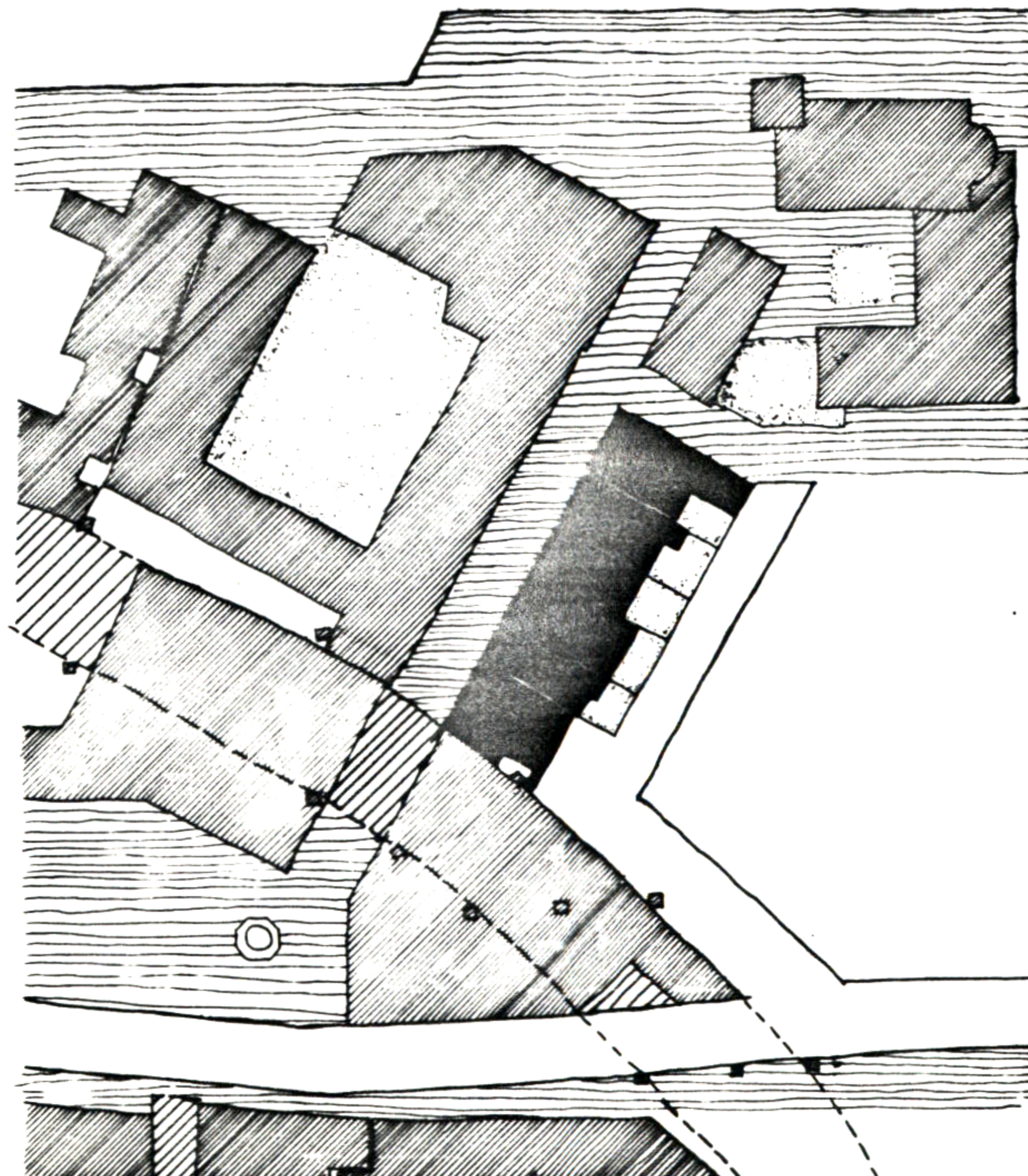
I PROPOSE BUILDING ROWHOUSES FACING ALONG THE EDGE OF THE PEDESTRIAN PATH WHICH LEADS FROM THE COMMUNITY BUILDING'S PLAZA TO THE CHURCH AND THE WATERFRONT.


THE ROWHOUSES WILL HAVE CONVIENCE RETAIL, SUCH AS, A GROCERY, A PHARMACY, A LAUNDRY, A HARDWARE STORE, AND AN ICE CREAM PARLOR, ON THE GROUND FLOOR, AND THE SHOP OWNERS' RESIDENCES ON THE FLOORS ABOVE.

MAIN ENTRANCES TO BOTH THE OWNERS' SHOPS AND HOMES WILL FRONT ALONG THE PEDESTRIAN PATH.

ON THE BACK SIDE OF THE ROWHOUSES, ORIENTED TOWARD THE SOUTH WILL BE SMALL PRIVATE GARDENS FOR CULTIVATING FLOWERS AND VEGETABLES.

ADDITIONAL ACCESS TO THE HOUSES IS PROVIDED BY A SMALL ALLEY IN THE BACK WHICH PROVIDES FOR TRUCK DELIVERY TO THE SHOPS AND PARKING FOR THE RESIDENTS' AUTOMOBILES.



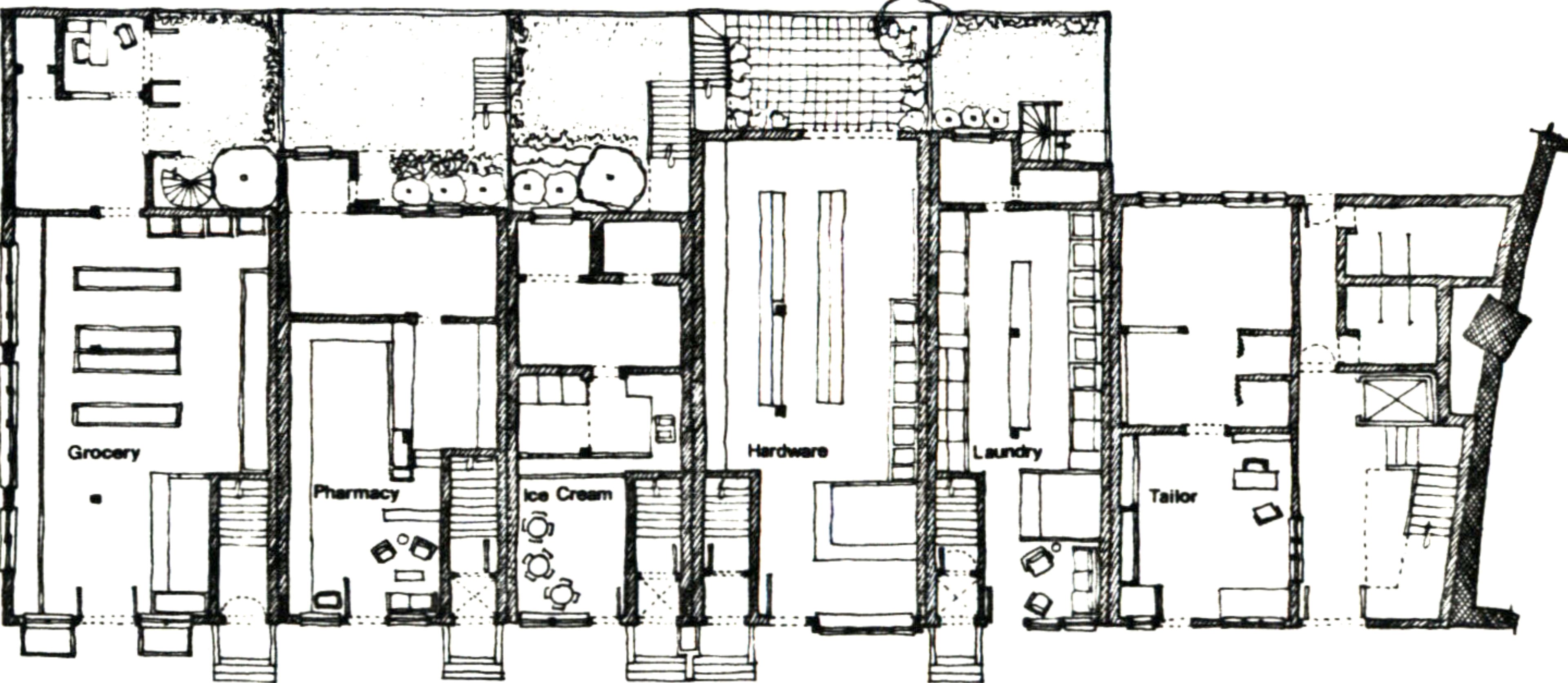
SITE PLAN 

Leslie G. Moldow

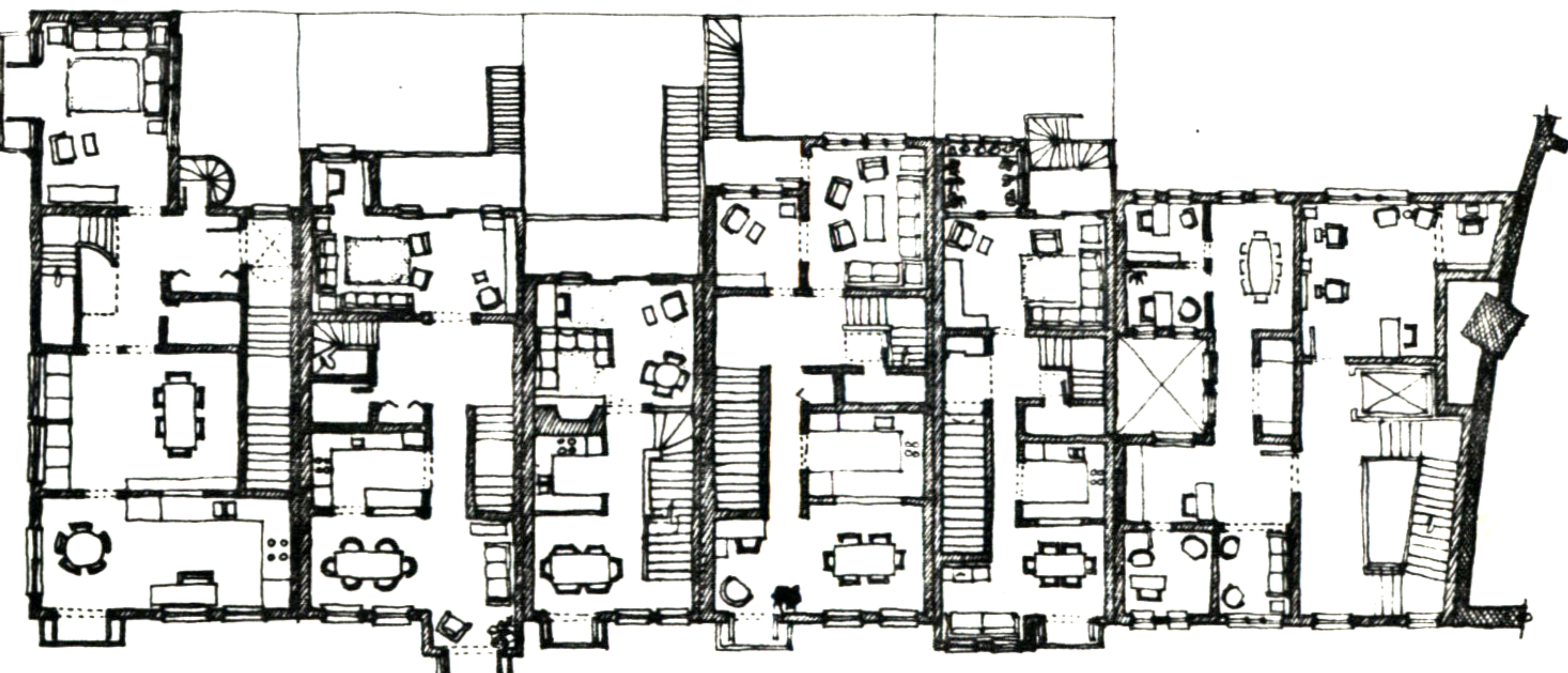
20. ROW HOUSES



North Elevation



1st Floor Plan



2nd Floor Plan



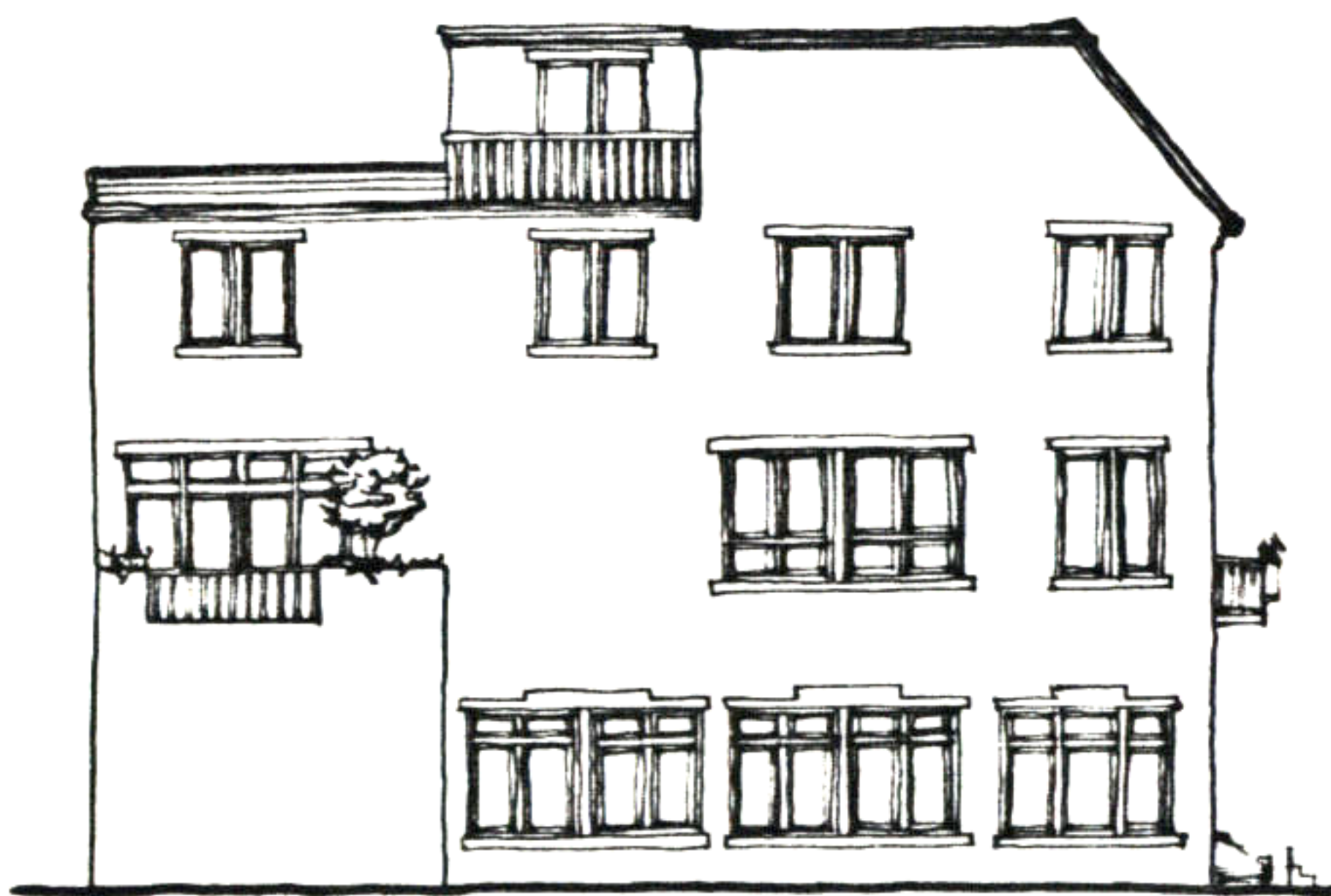
20. ROW HOUSES



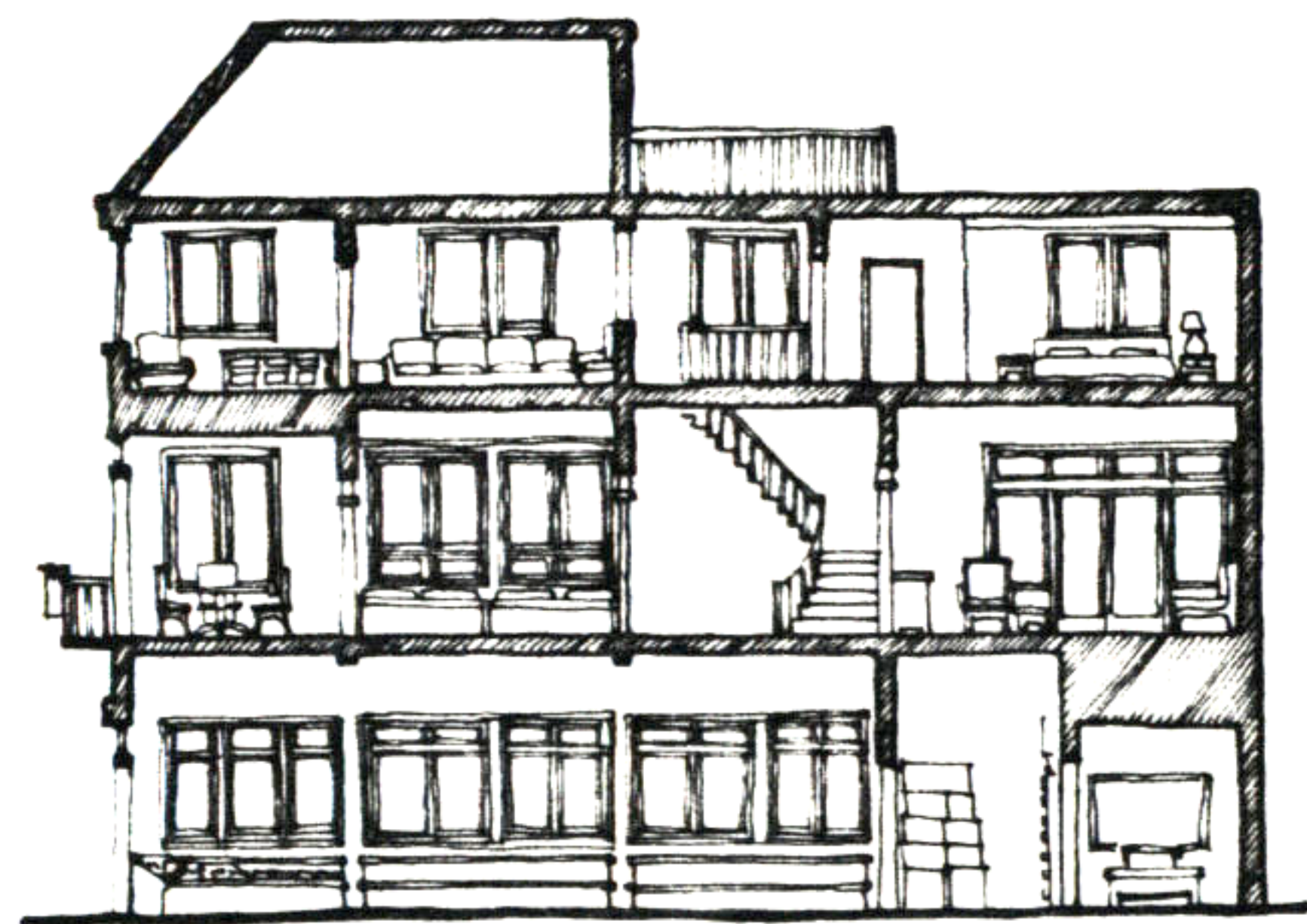
North Elevation



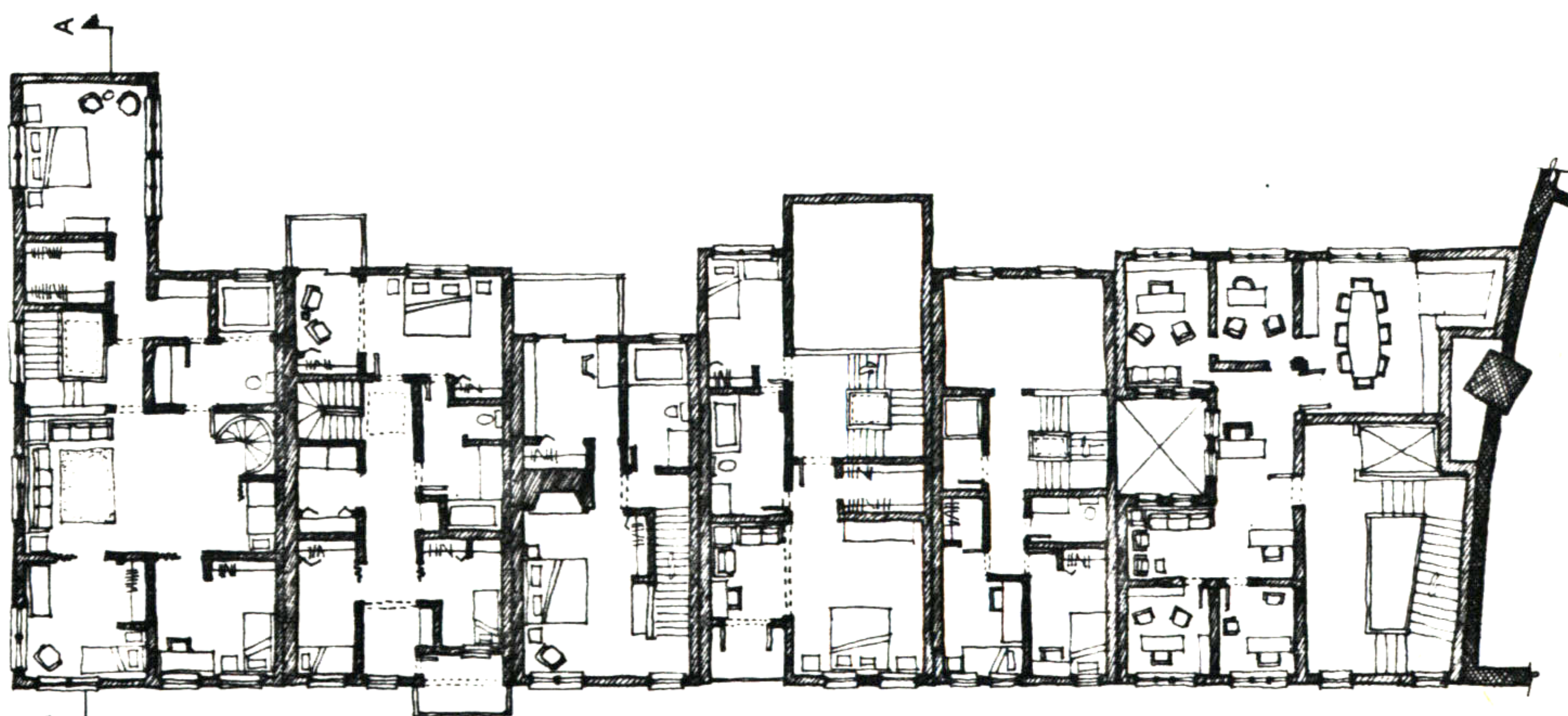
South Elevation



East Elevation



Section A-A



3rd Floor Plan

