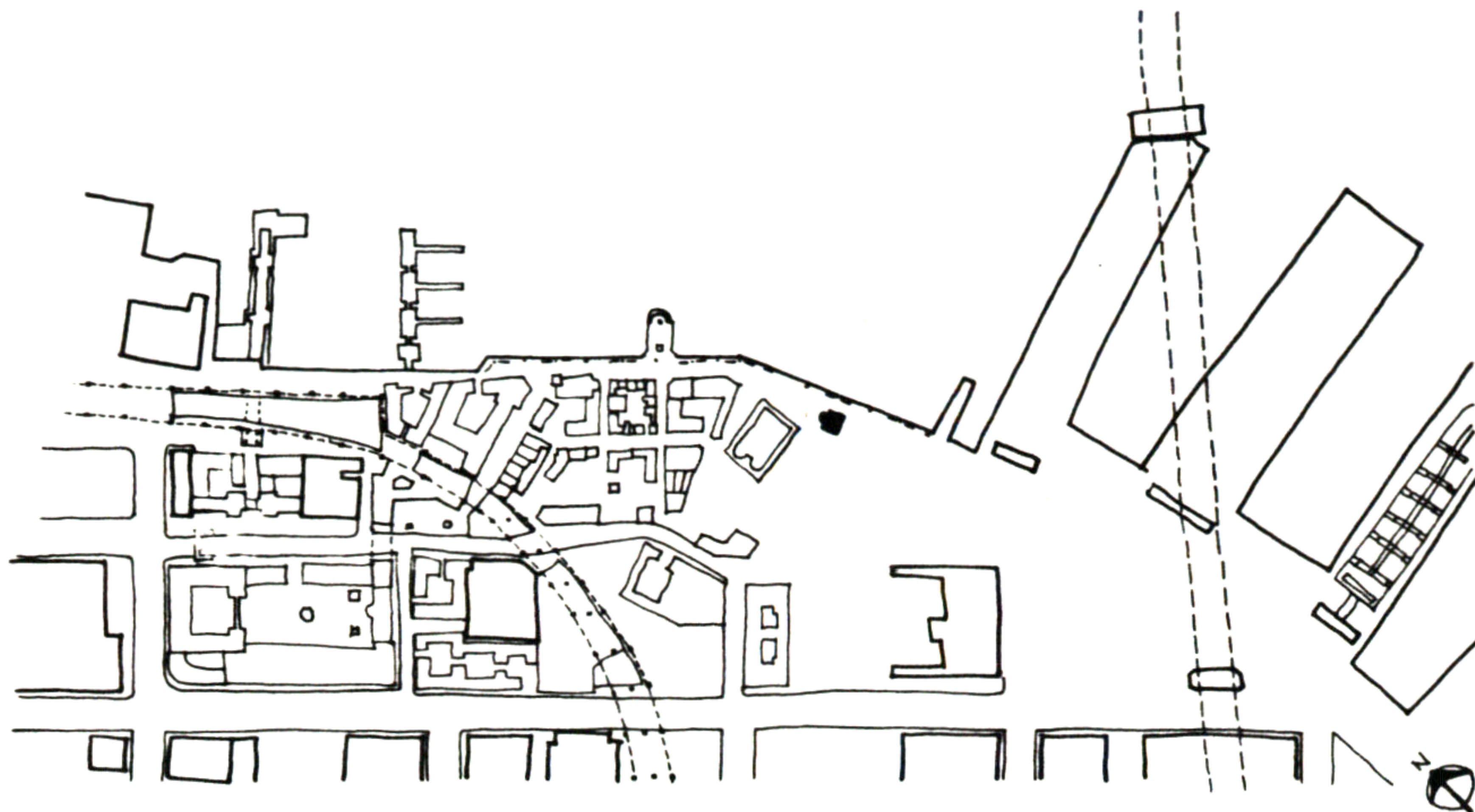


49. BANDSTAND



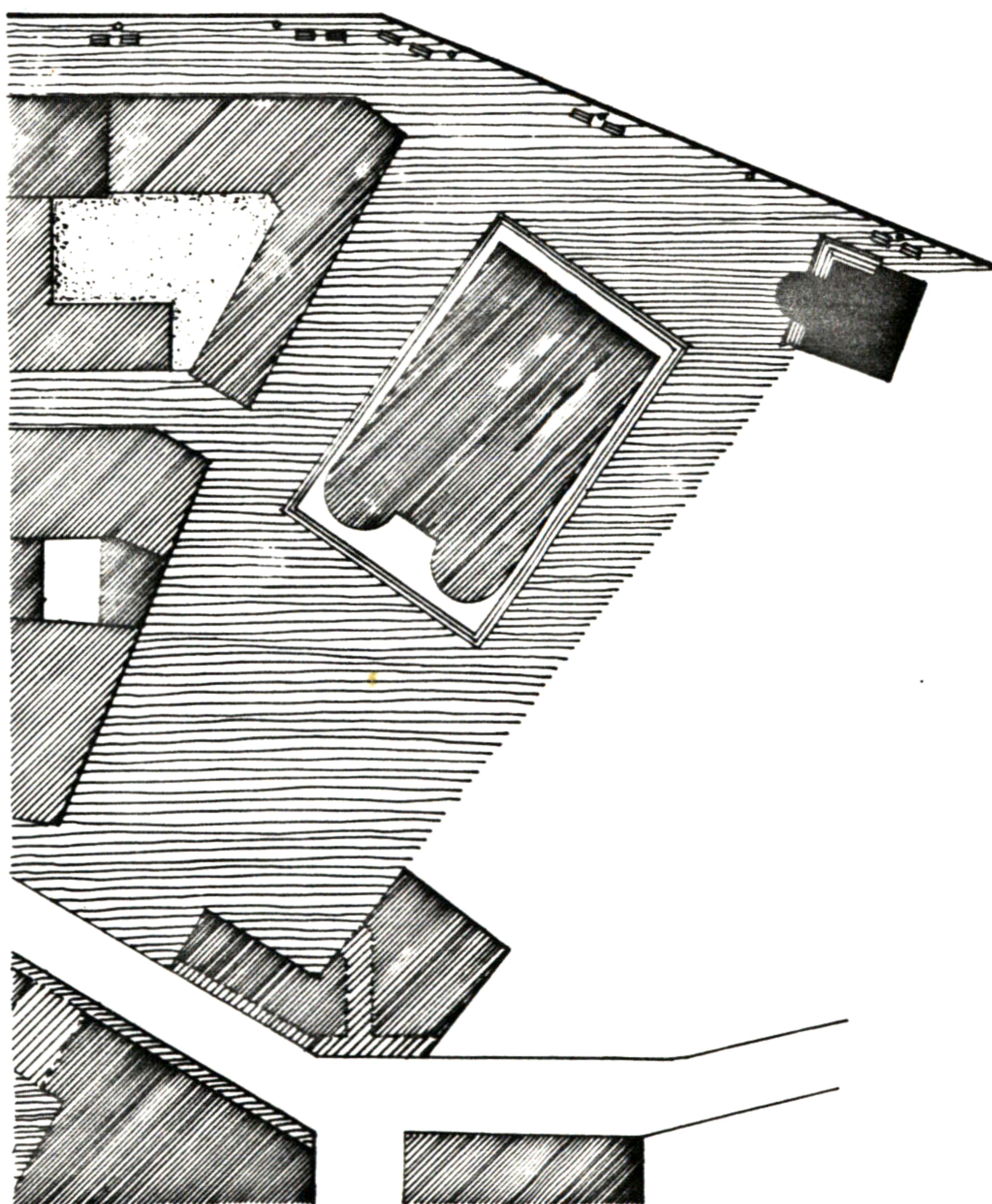
I PROPOSE A TRELLISED BANDSTAND PLATFORM WHICH WILL PROVIDE A PLACE FOR A VARIETY OF COMMUNITY AND INDIVIDUAL ACTIVITIES.

THE BANDSTAND WILL FRONT ONTO BOTH THE LOWER PORTION OF THE CENTRAL SQUARE, AND THE PROMENADE WITH THE BAY BEYOND. IT WILL BECOME A PLACE FOR MUSICIANS TO PLAY DURING FESTIVALS, DANCES, AND INFORMAL OUTDOOR CONCERTS.

THE PLATFORM ALSO WILL ACT AS A RAISED LOOKOUT FROM WHICH PEOPLE CAN EITHER WATCH OTHER PEOPLE STROLLING ALONG THE PROMENADE, OR ENJOY A VIEW OF THE BAY, SAILBOATS AND SHIPS.

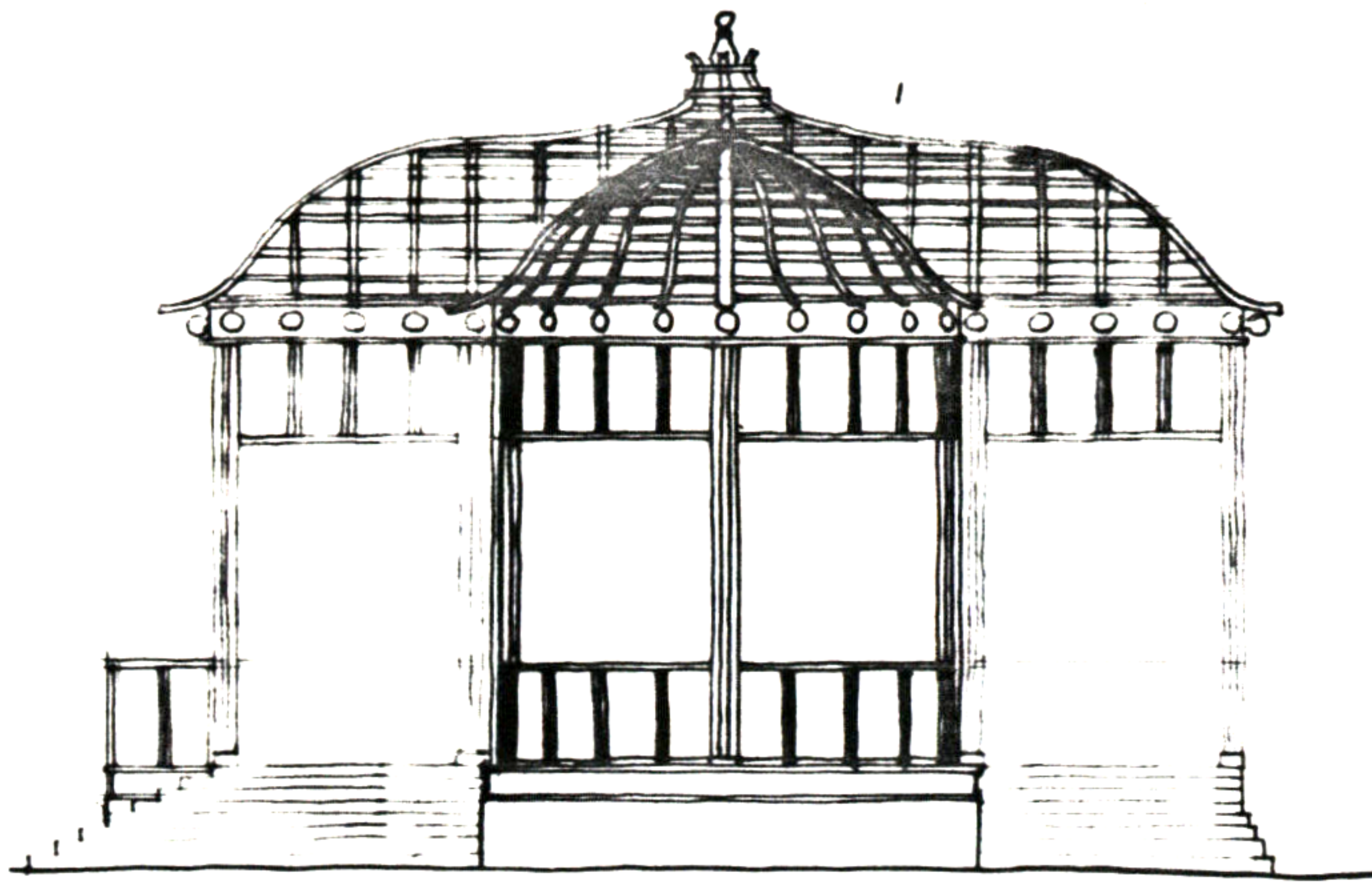
GROUP PICNICS AND SIMILAR ACTIVITIES MAY ALSO TAKE PLACE ON THE PLATFORM.

THE PLATFORM IS A VERY LIGHT AND AIRY STRUCTURE, BUILT OF WROUGHT IRON AND STEEL AND PARTIALLY GLAZED FOR PROTECTION AGAINST WIND AND RAIN.

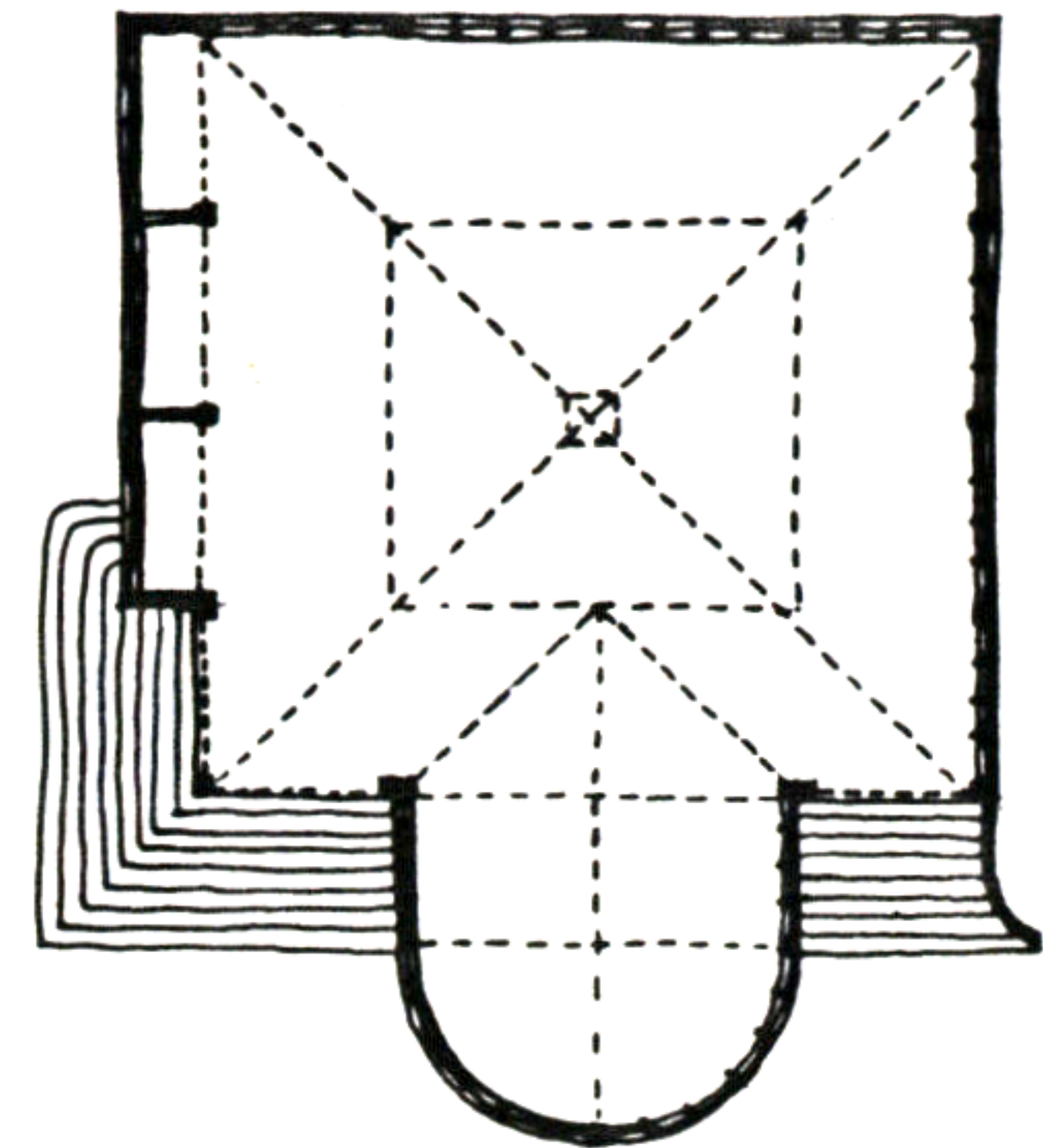


SITE PLAN 

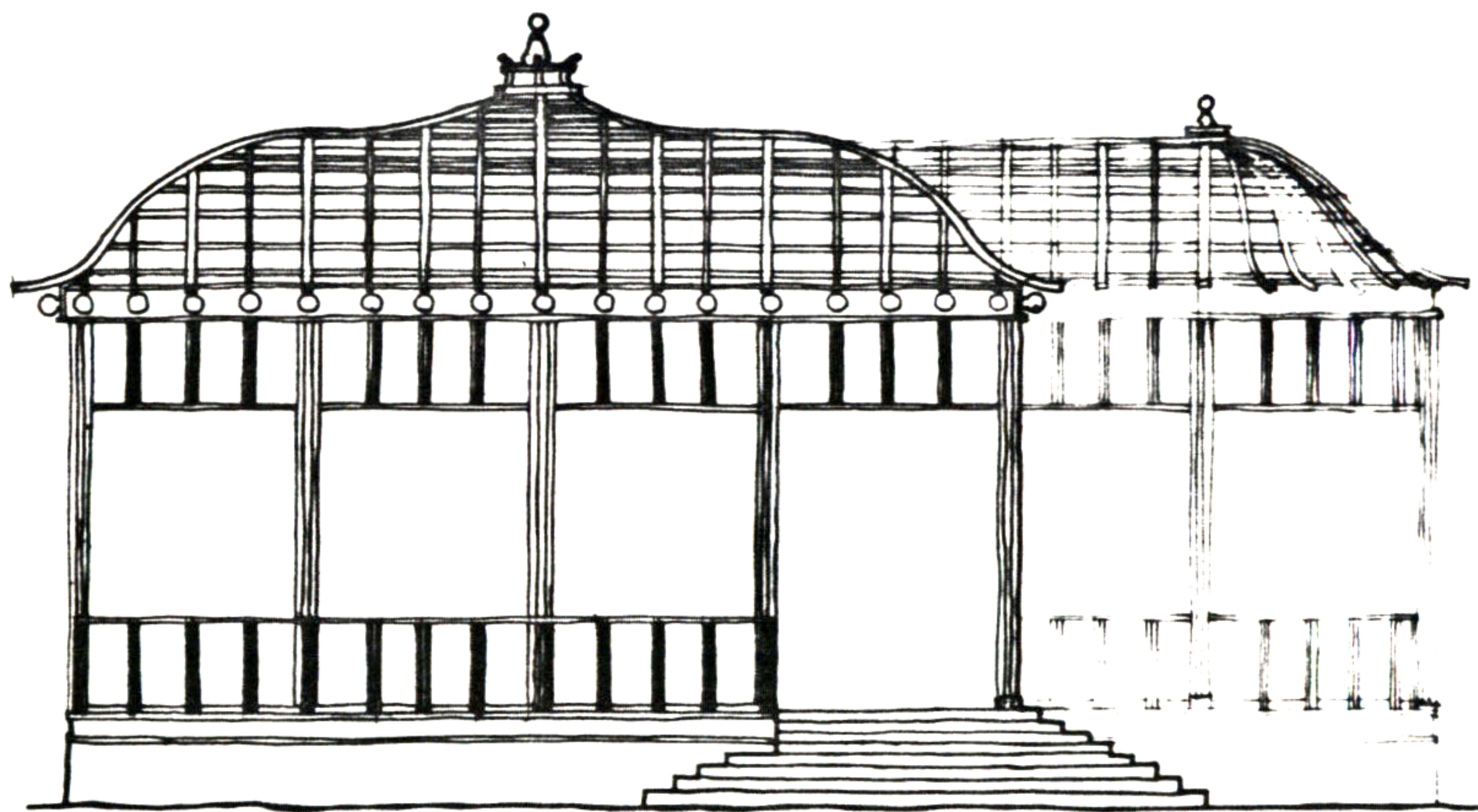
49. BANDSTAND



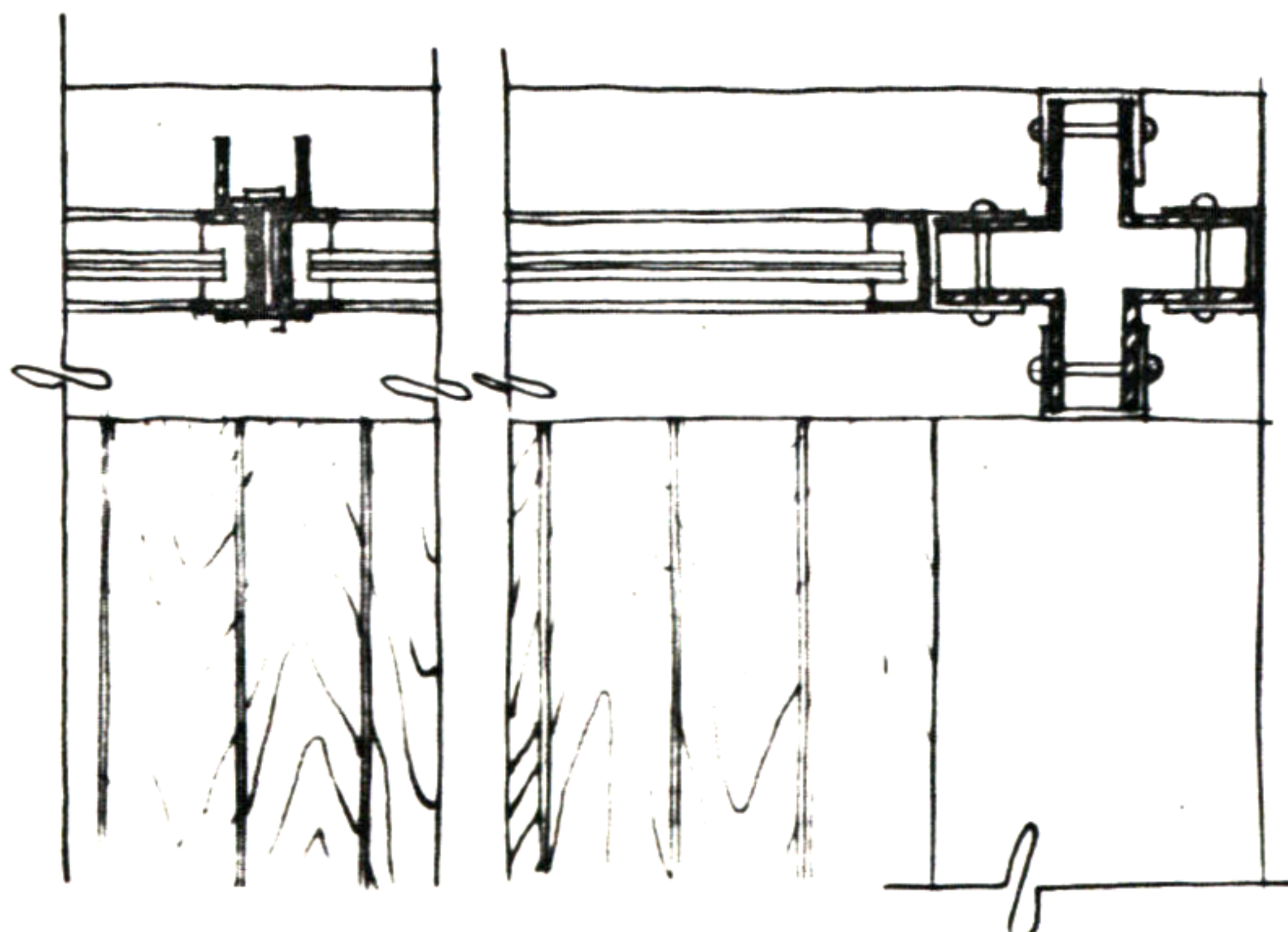
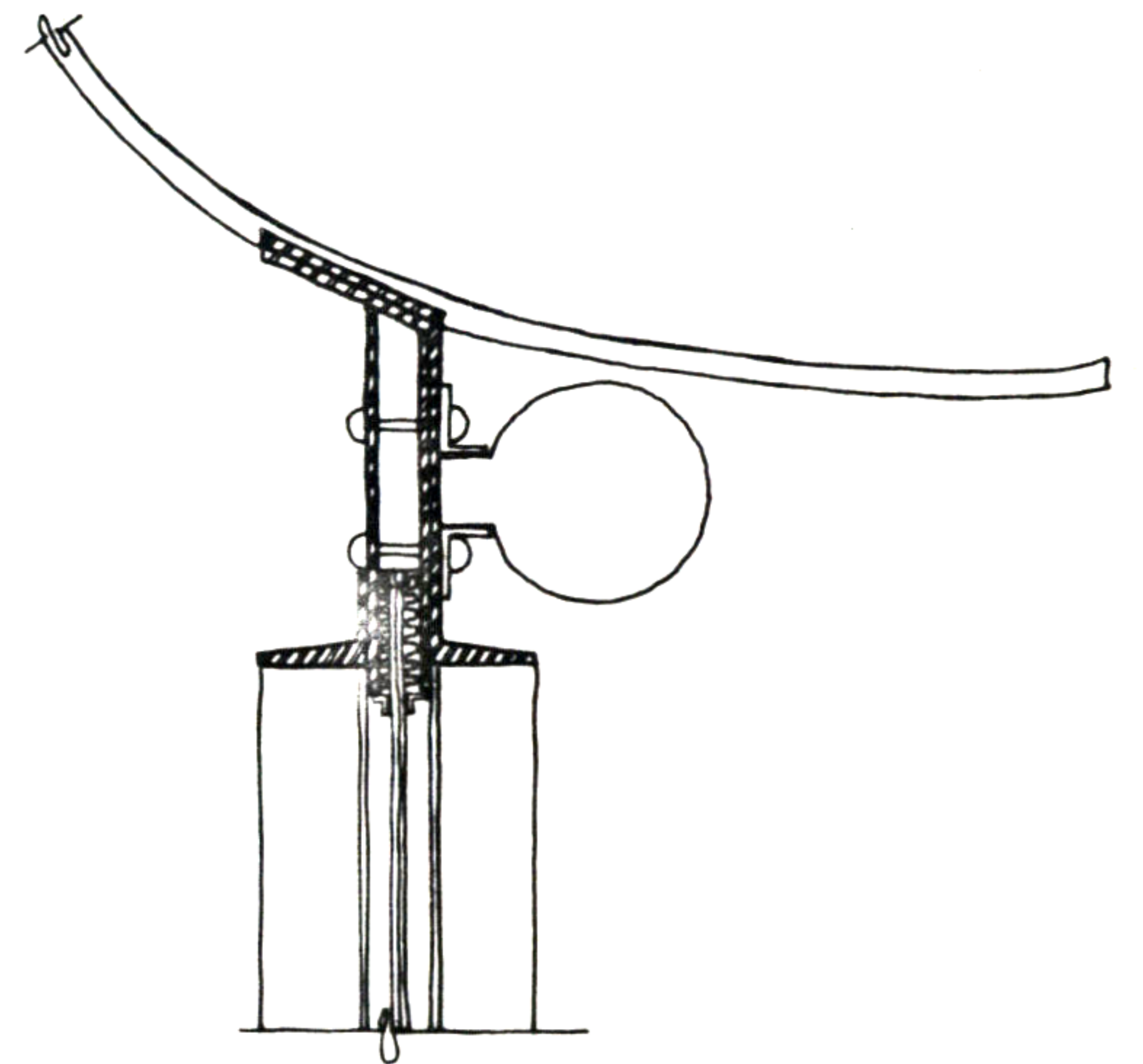
NORTH ELEVATION



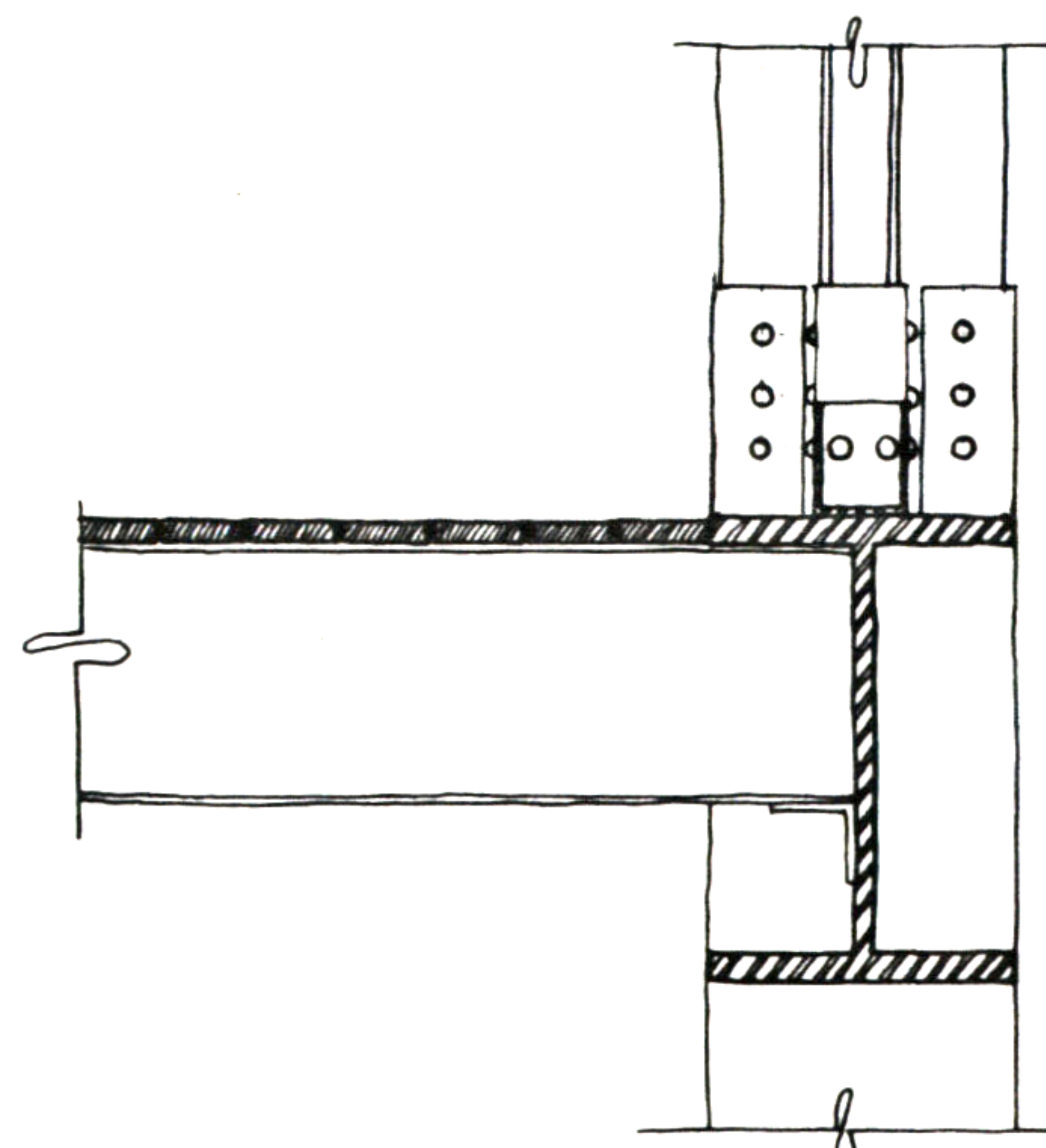
PLAN



EAST ELEVATION



DETAIL PLAN



DETAIL SECTION

Leslie G. Moldow