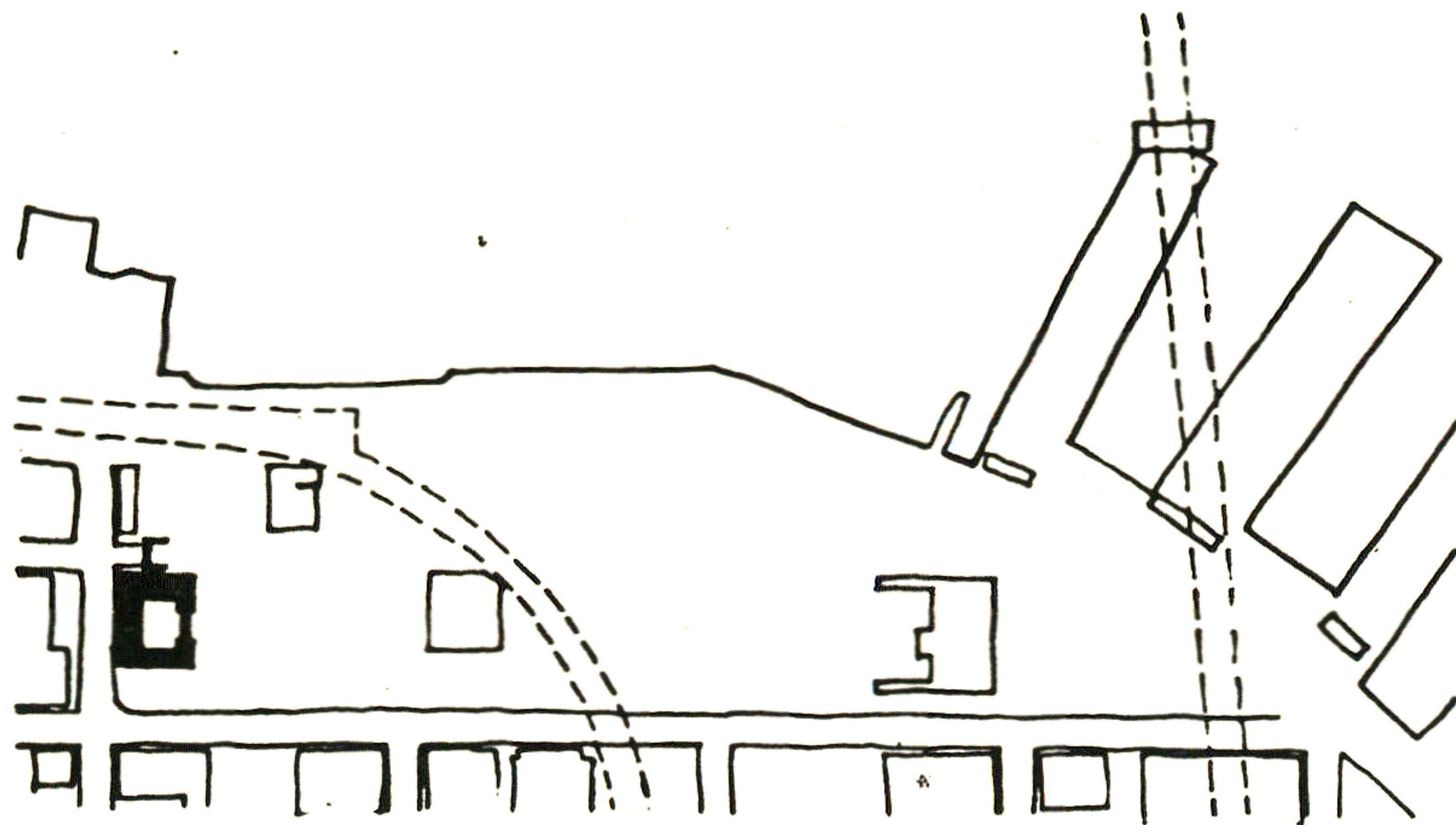
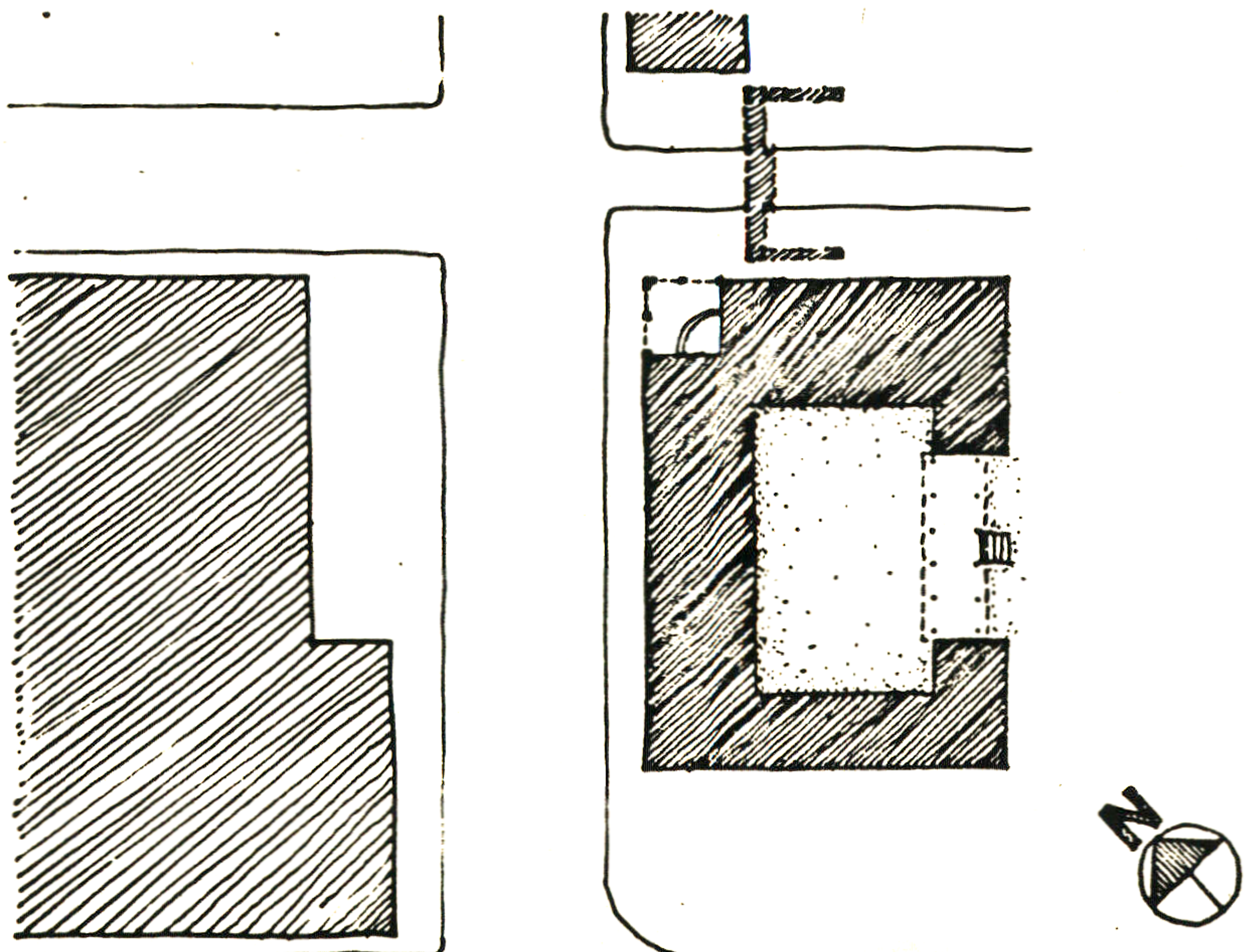


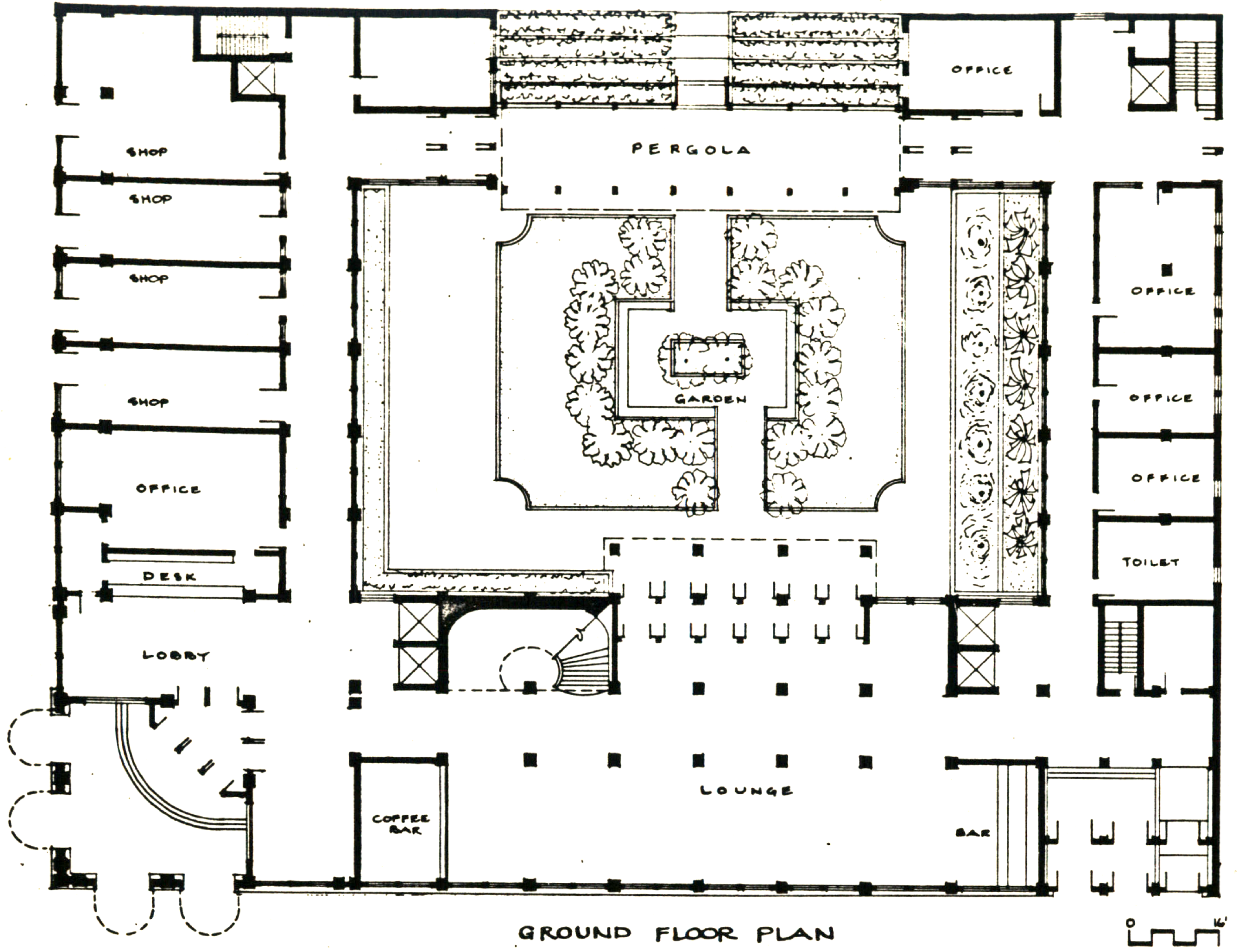
2 HOTEL



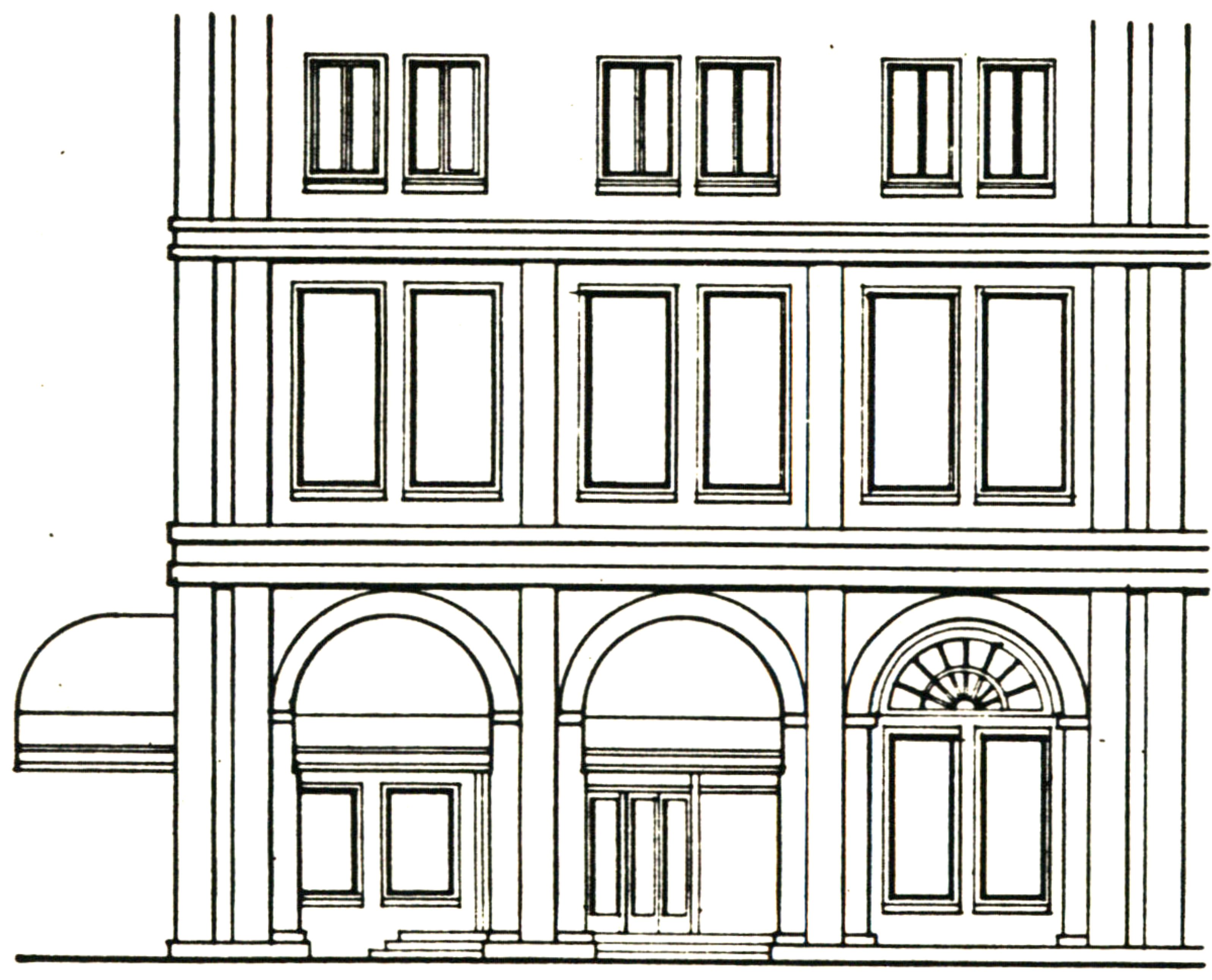
THE HOTEL SITS ALONGSIDE THE GATEWAY, WITH ITS MAIN ENTRANCE AT THE CORNER OF MISSION AND STEUART STREETS. THE HOTEL, AS A CENTER FOR VISITORS AND STRANGERS, GIVES THE COMMUNITY A BOUNDARY. ALONG MISSION, ON GROUND LEVEL, IS THE CENTRAL LOUNGE, WHILE RETAIL SHOPS FACE THE STREET INSIDE THE GATEWAY. THE BUILDING OPENS TO THE SOUTHEAST WITH ITS GARDEN COURT, WITH A PERGOLA WHICH DEFINES THE EDGE. RETAIL SHOPS, THE LOUNGE, AND HOTEL OFFICES SURROUND THE GARDEN AT GROUND LEVEL, WHILE THE RESTAURANT AND THE BALLROOM'S BALCONY LOOK INWARD FROM THE SECOND FLOOR. THE HOTEL OCCUPIES 130,000 SQUARE FEET, AND IT CONTAINS 157 ROOMS.



2. HOTEL



GROUND FLOOR PLAN

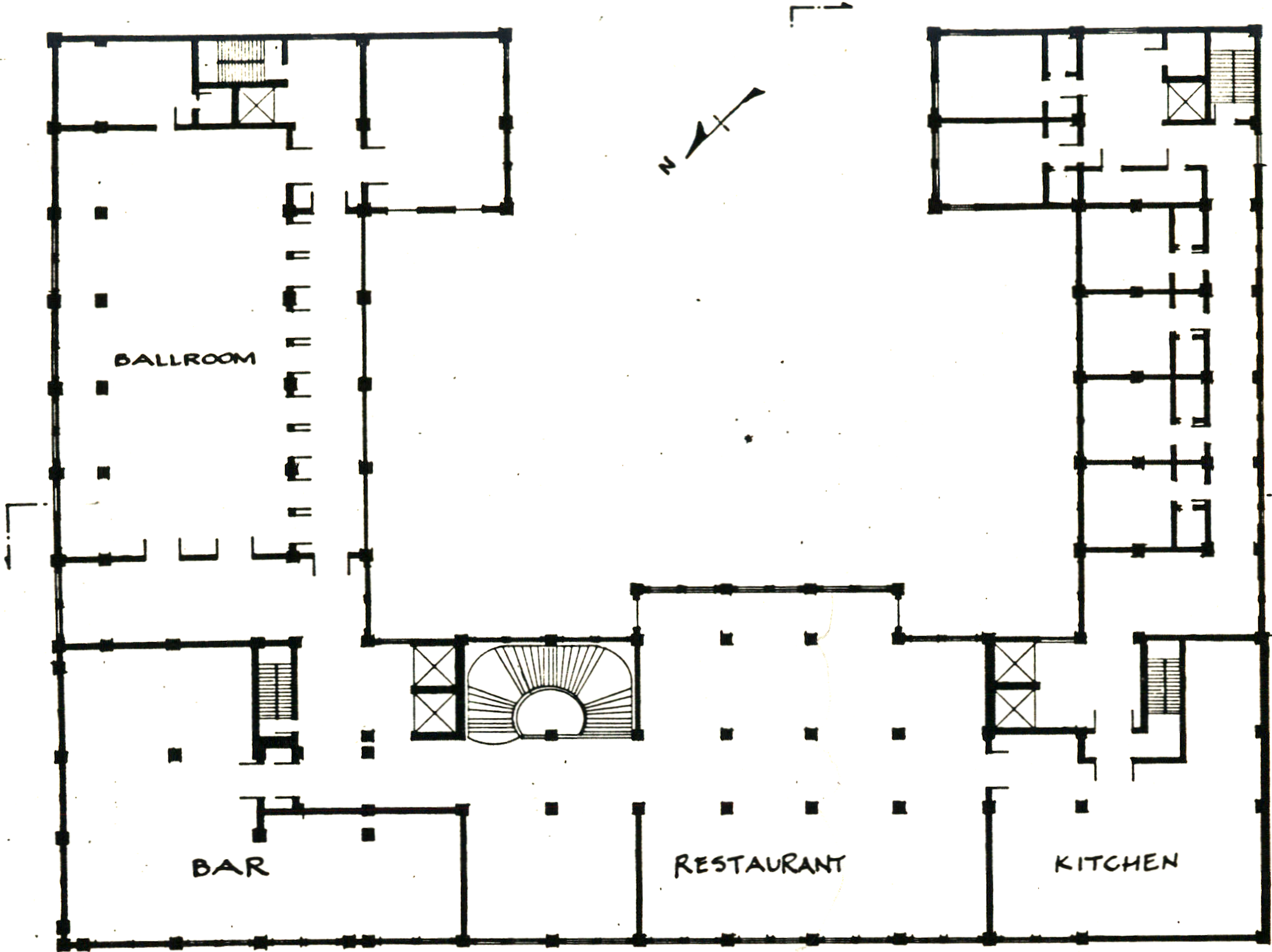


ELEVATION OF ENTRANCE



James McLane

2. HOTEL



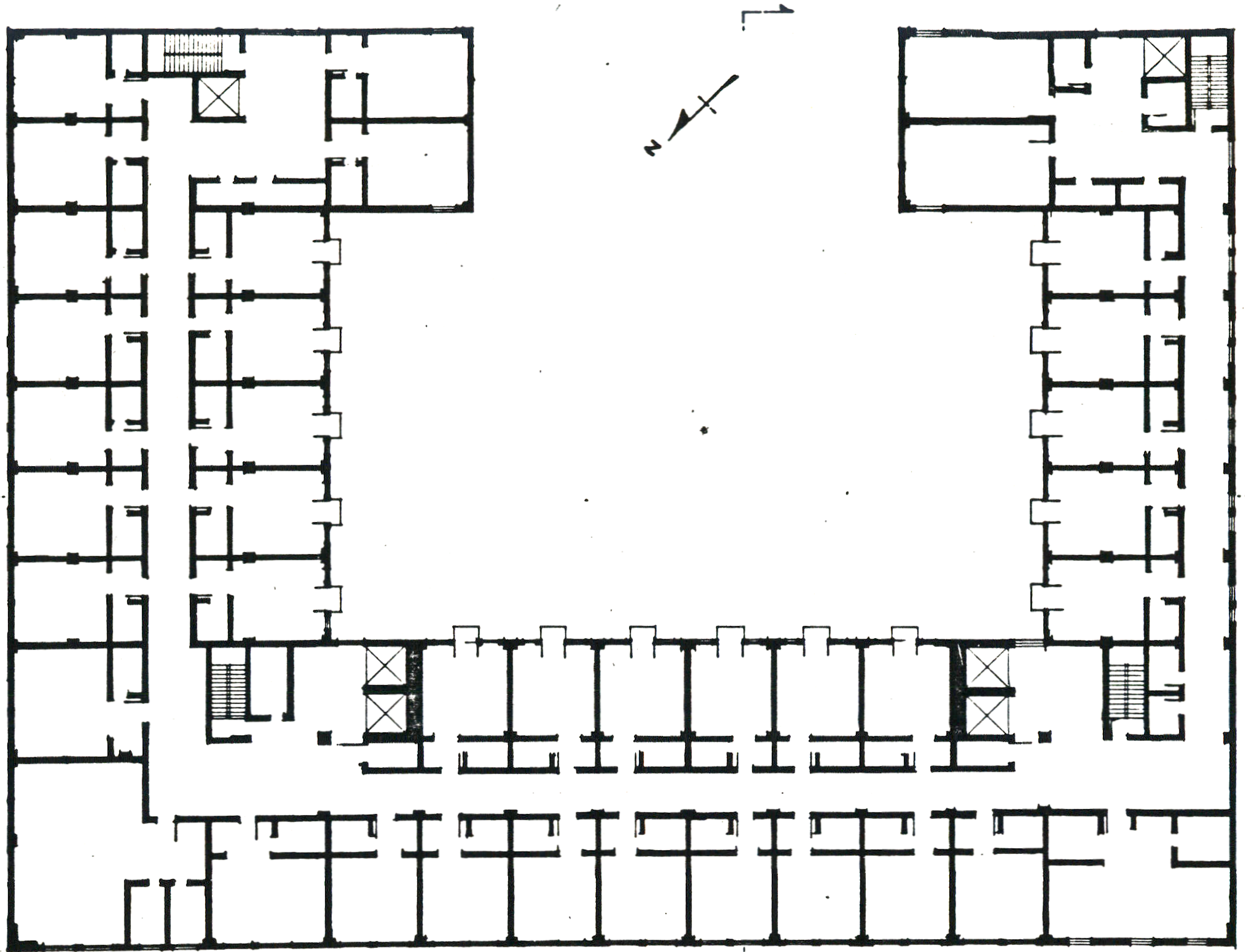
SECOND FLOOR PLAN



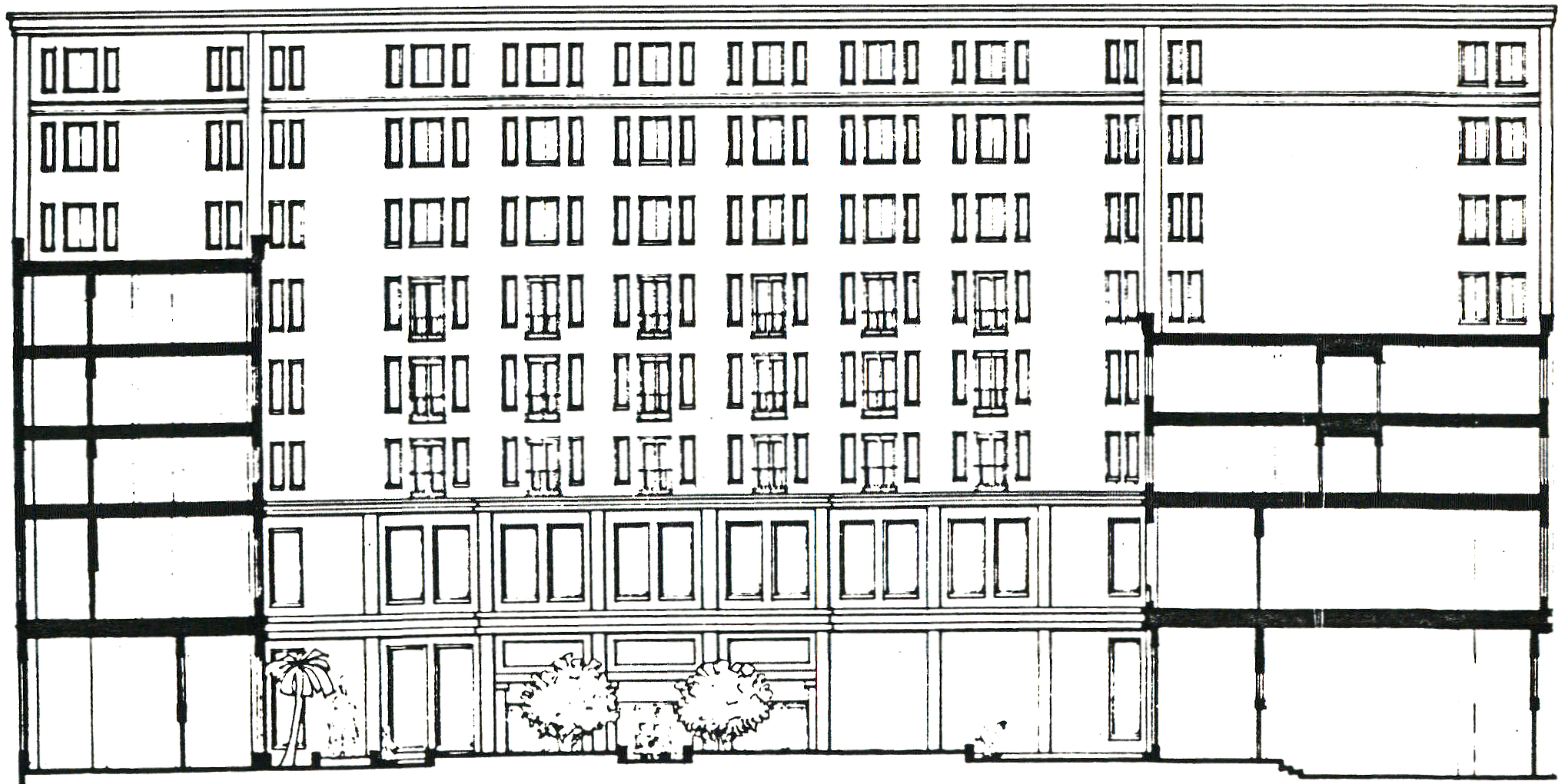
NORTHWEST ELEVATION

James McLane

2 HOTEL



THIRD FLOOR PLAN



SECTION LOOKING NORTHWEST



James McLane

2. HOTEL



SECTION LOOKING SOUTHWEST

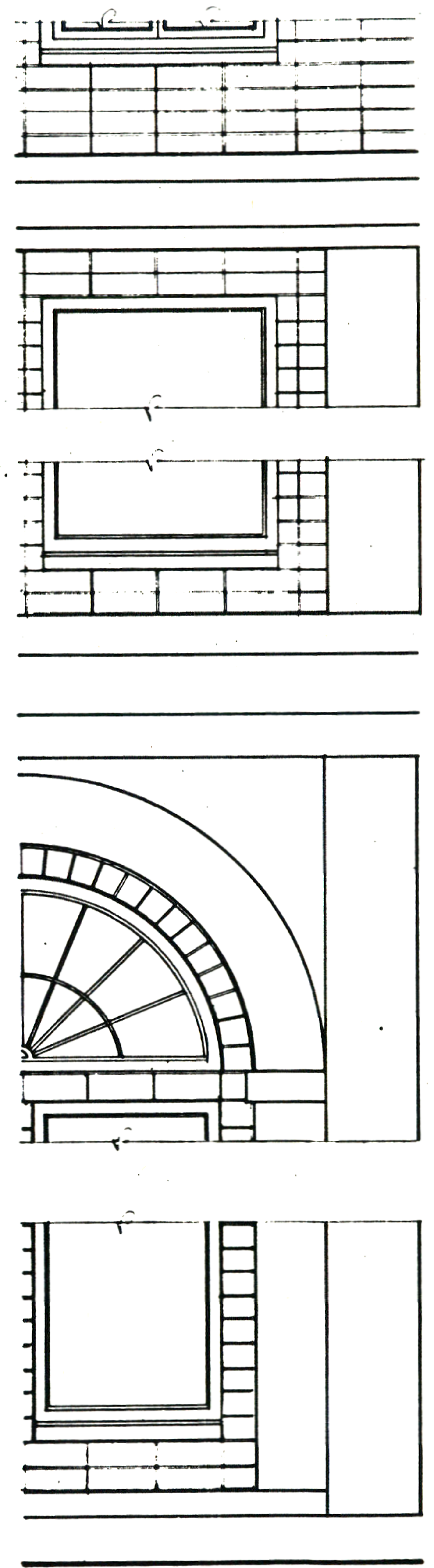
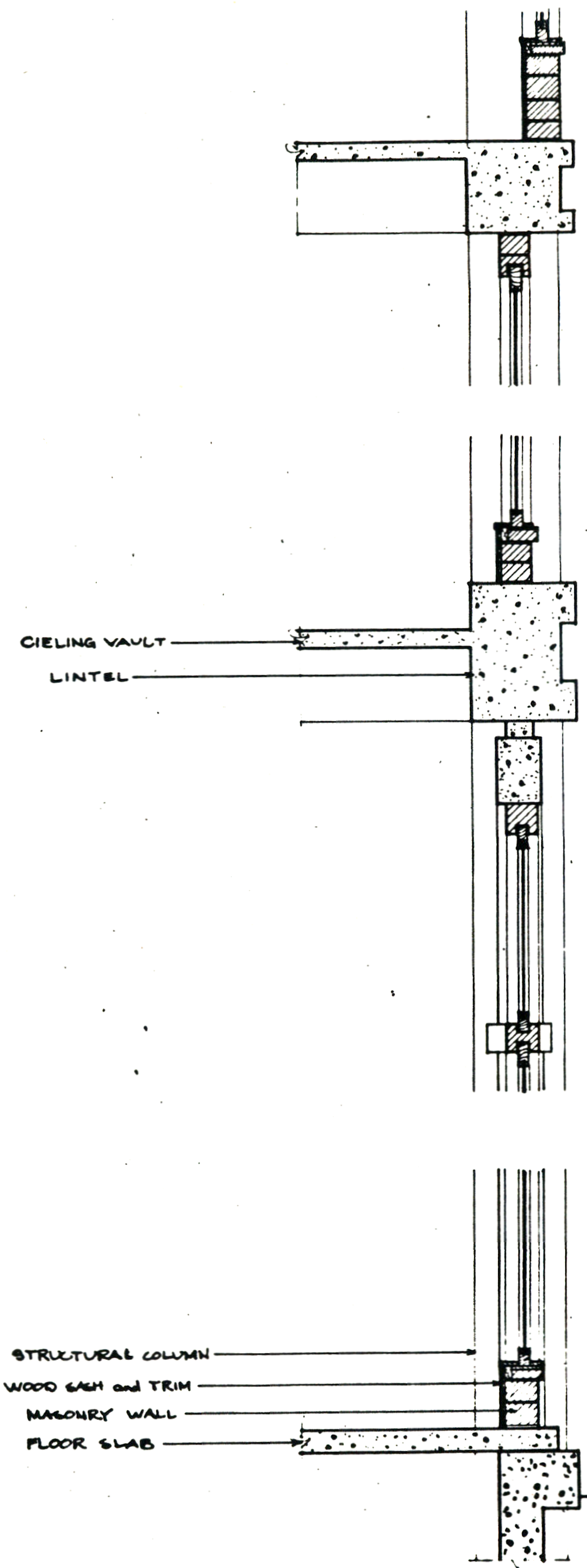


NORTHEAST ELEVATION



James McLane

2. HOTEL

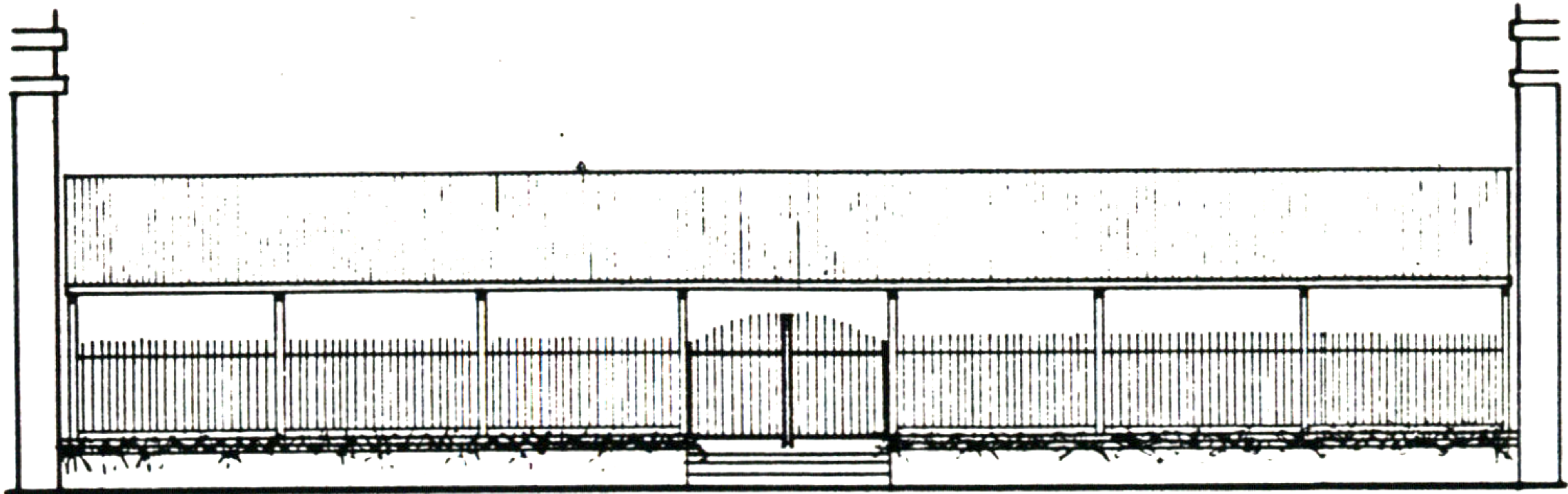
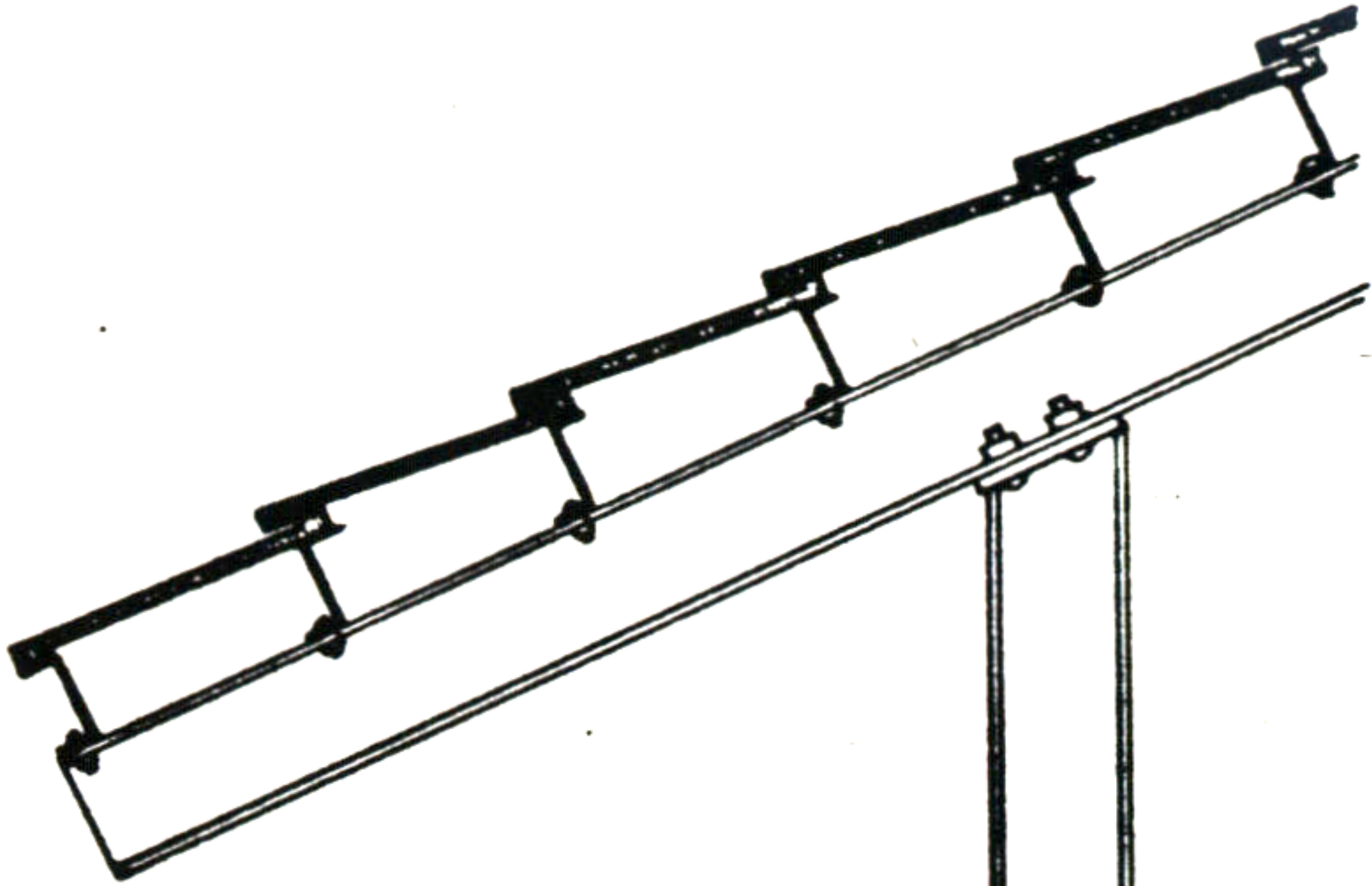


FACADE CONSTRUCTION



James McLane

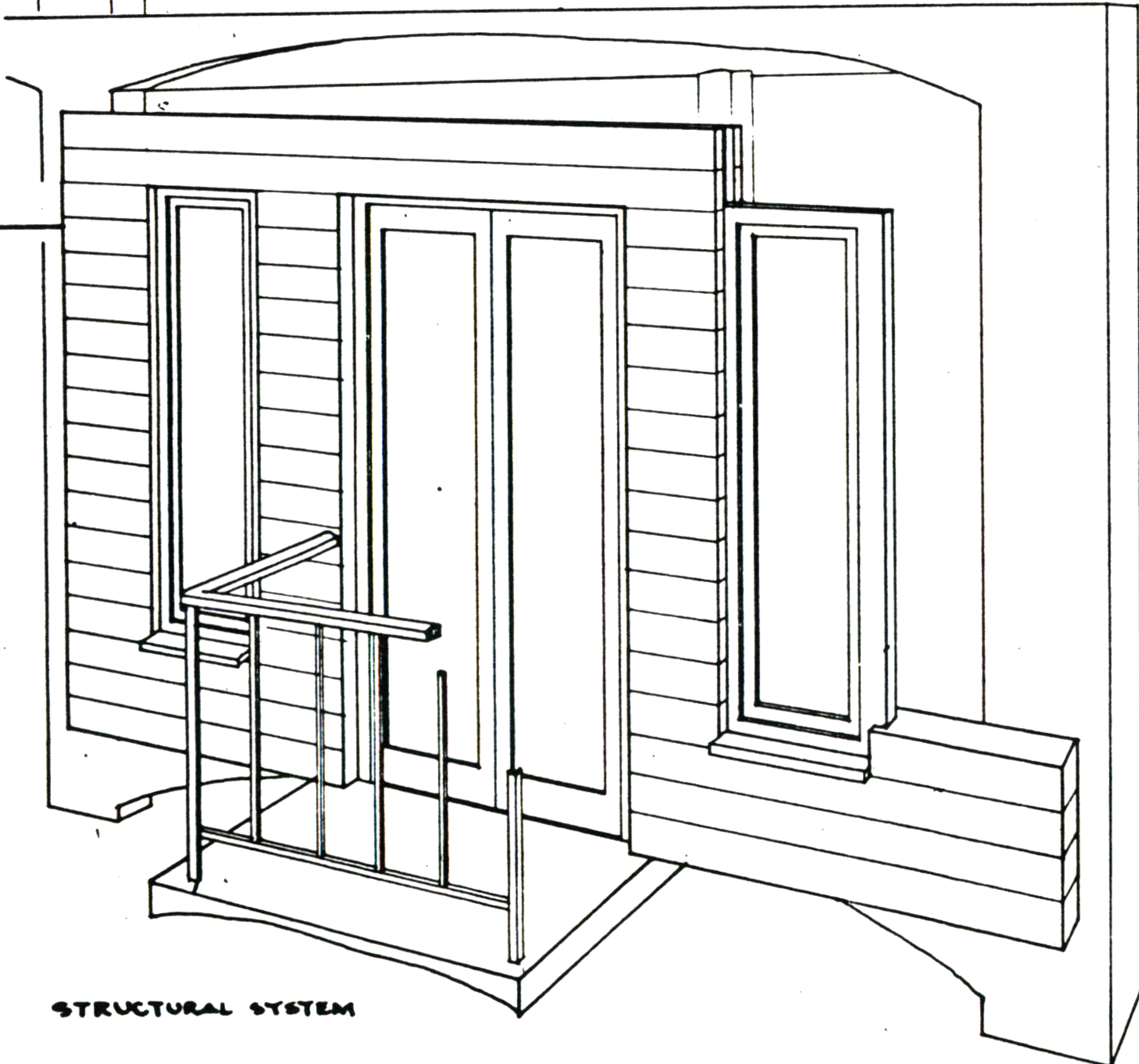
2. HOTEL



ELEVATION OF PERGOLA



DETAIL OF PERGOLA



STRUCTURAL SYSTEM

James McLane