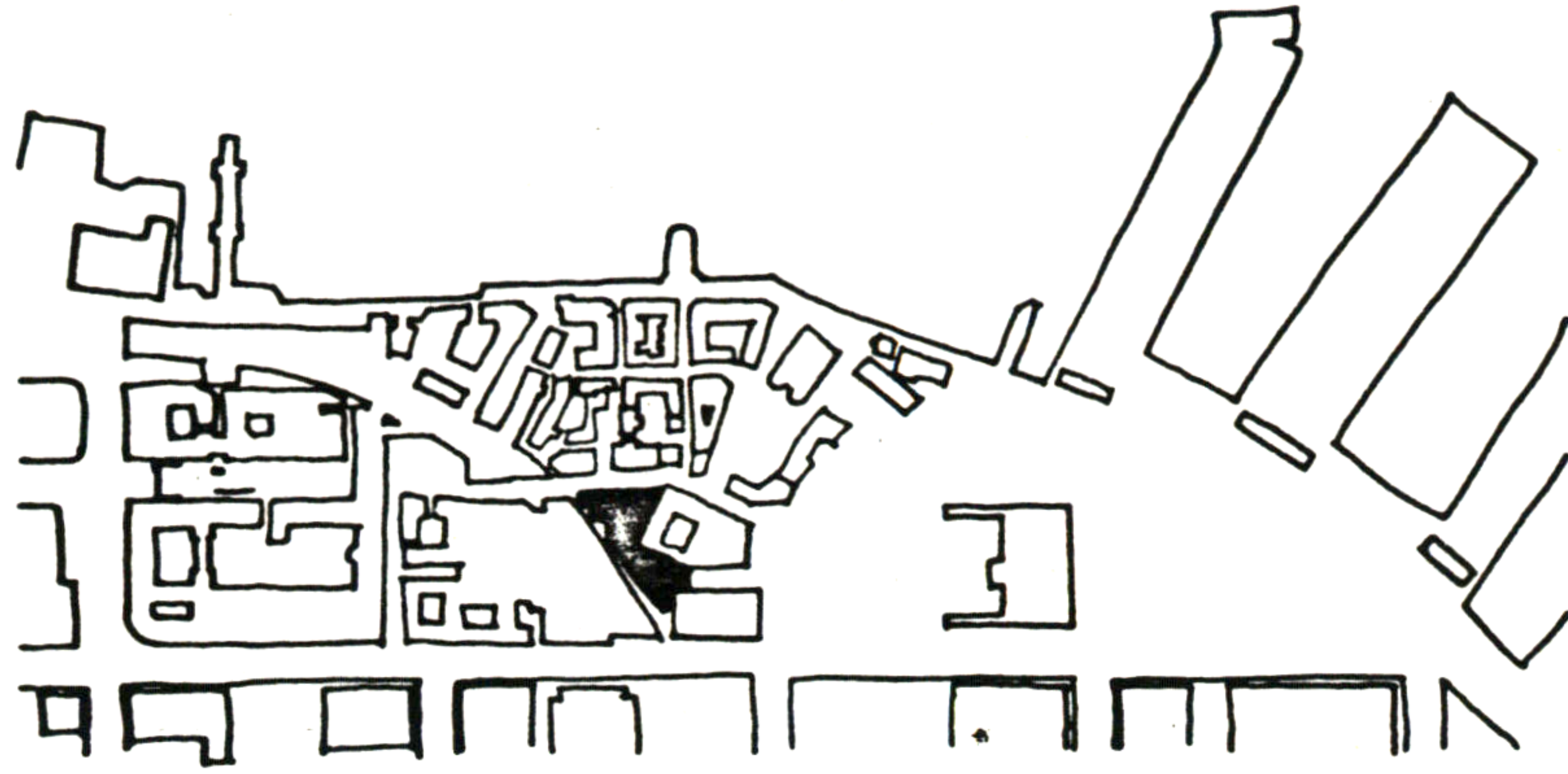
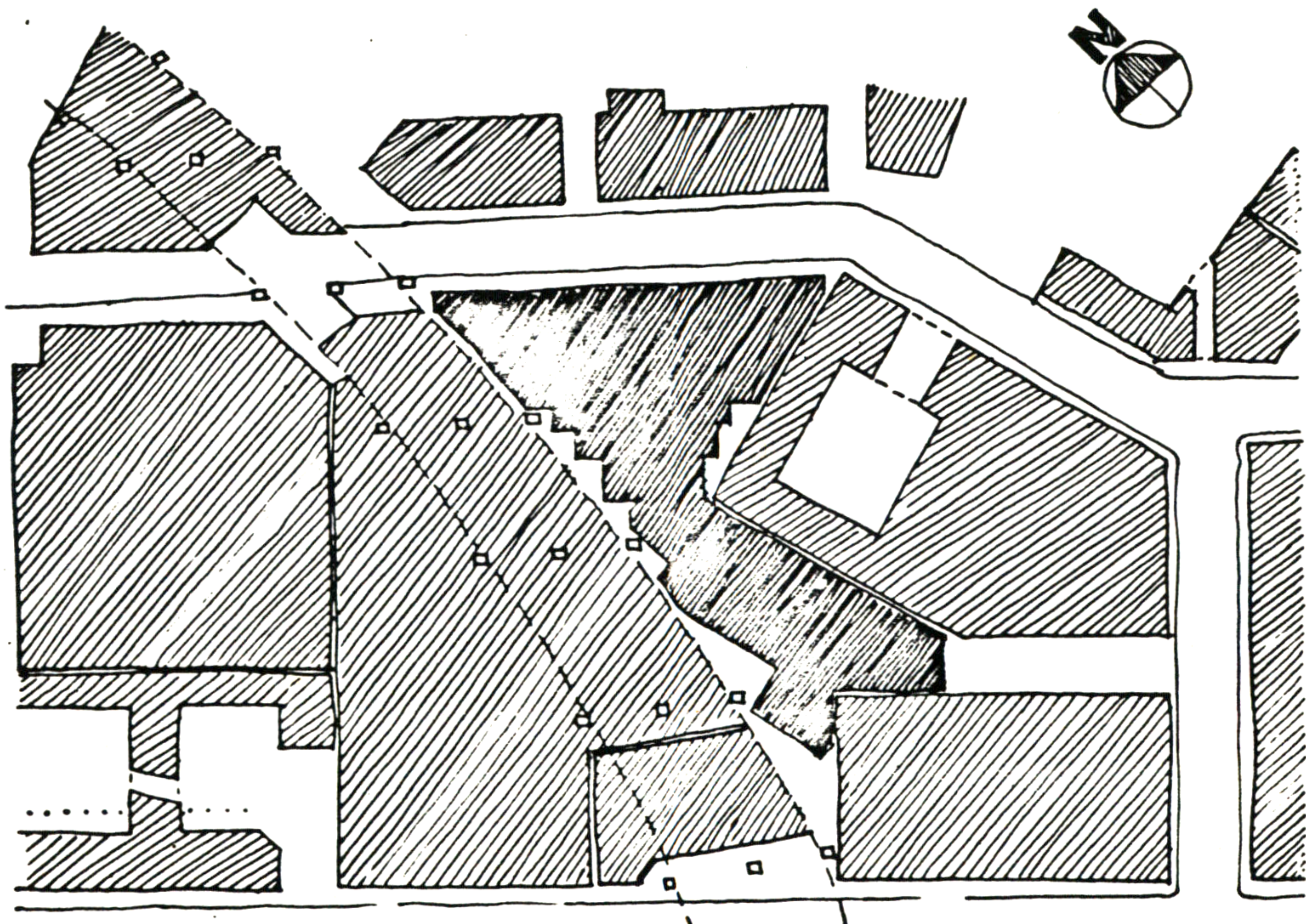


## 54. MUSIC CONSERVATORY



THE MUSIC CONSERVATORY SERVES AS A COMMUNITY INSTITUTION. THE MAJORITY OF THE STUDENTS WOULD LIVE IN THE NEIGHBORHOOD, AND, AS PART OF THEIR TRAINING, WOULD GIVE INSTRUCTION TO CHILDREN FROM THE COMMUNITY. THE BUILDING IS DIVIDED INTO TWO MAIN PARTS, THE CONSERVATORY AND THE AUDITORIUM, IN AN ATTEMPT TO MAKE A COHERENT STRUCTURE ON AN IRREGULAR SITE. FROM THE STREET, ONE ENTERS THE CONSERVATORY'S GLASS-COVERED COURTYARD, WHICH IS SURROUNDED BY COLONNADED CORRIDORS ON EACH OF THE FOUR FLOORS. THE MAIN BUILDING CONTAINS CLASSROOMS, STUDIOS, PRACTICE ROOMS, ADMINISTRATIVE OFFICES, AND A LIBRARY. PASSING STRAIGHT THROUGH THE COURTYARD FROM THE ENTRANCE, ONE REACHES THE ROTUNDA, WHICH IS THE RECEPTION AREA OF THE AUDITORIUM. THE AUDITORIUM HOLDS 580 PEOPLE.

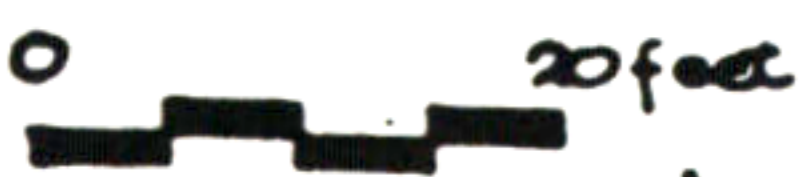
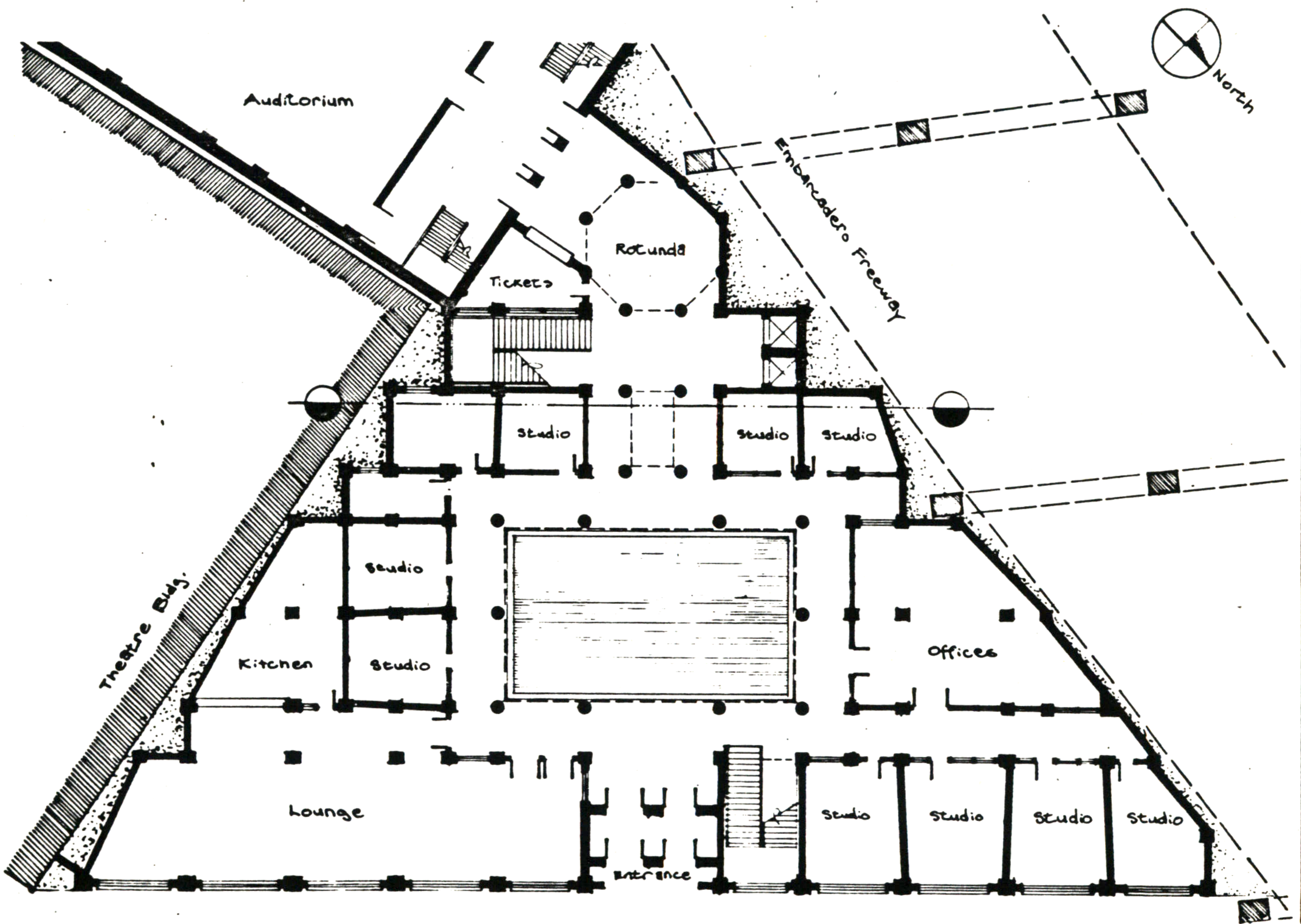


**James McLane**

# 54. MUSIC CONSERVATORY



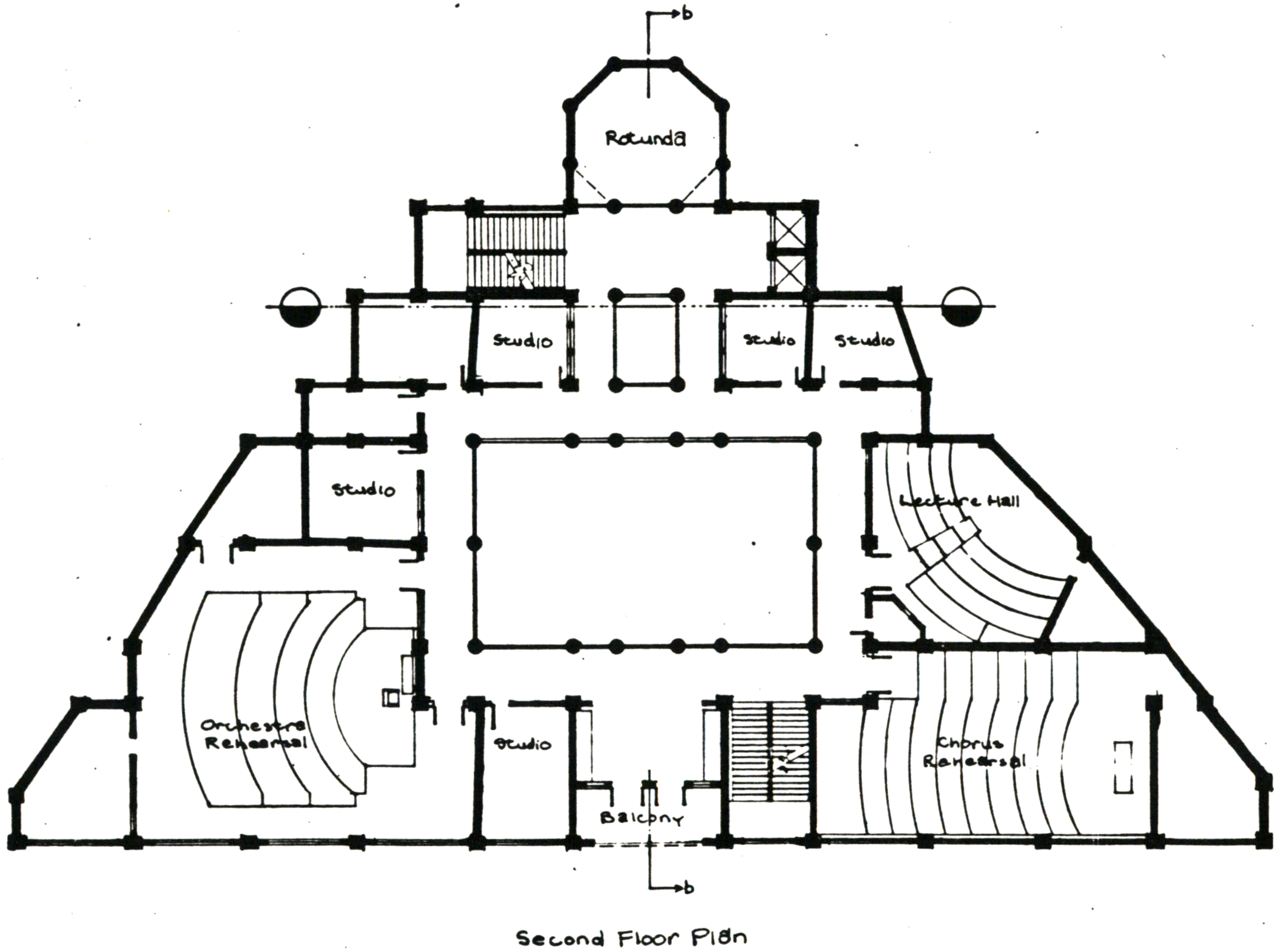
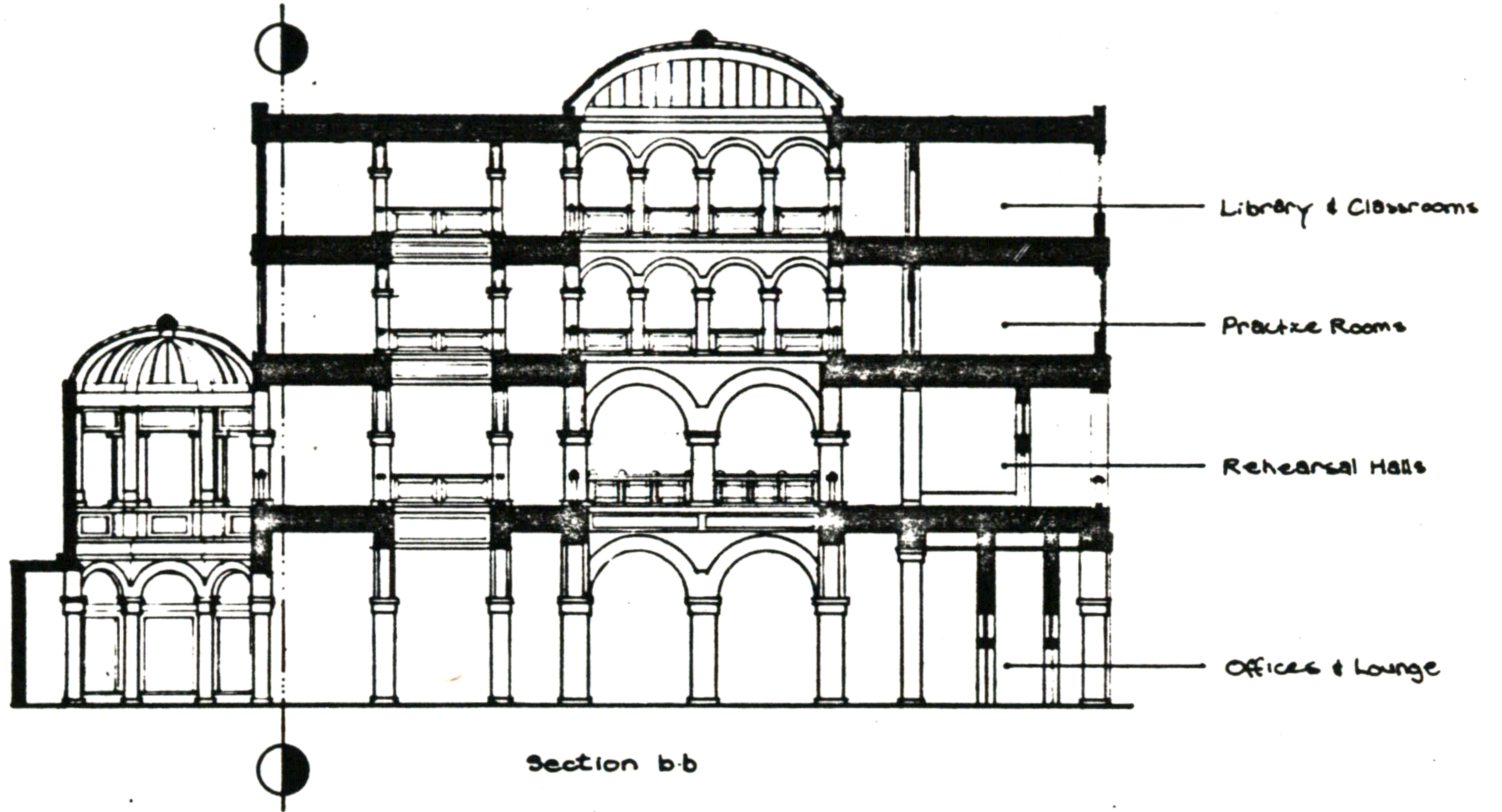
Entrance



First Floor Plan

James McLane

# 54. MUSIC CONSERVATORY



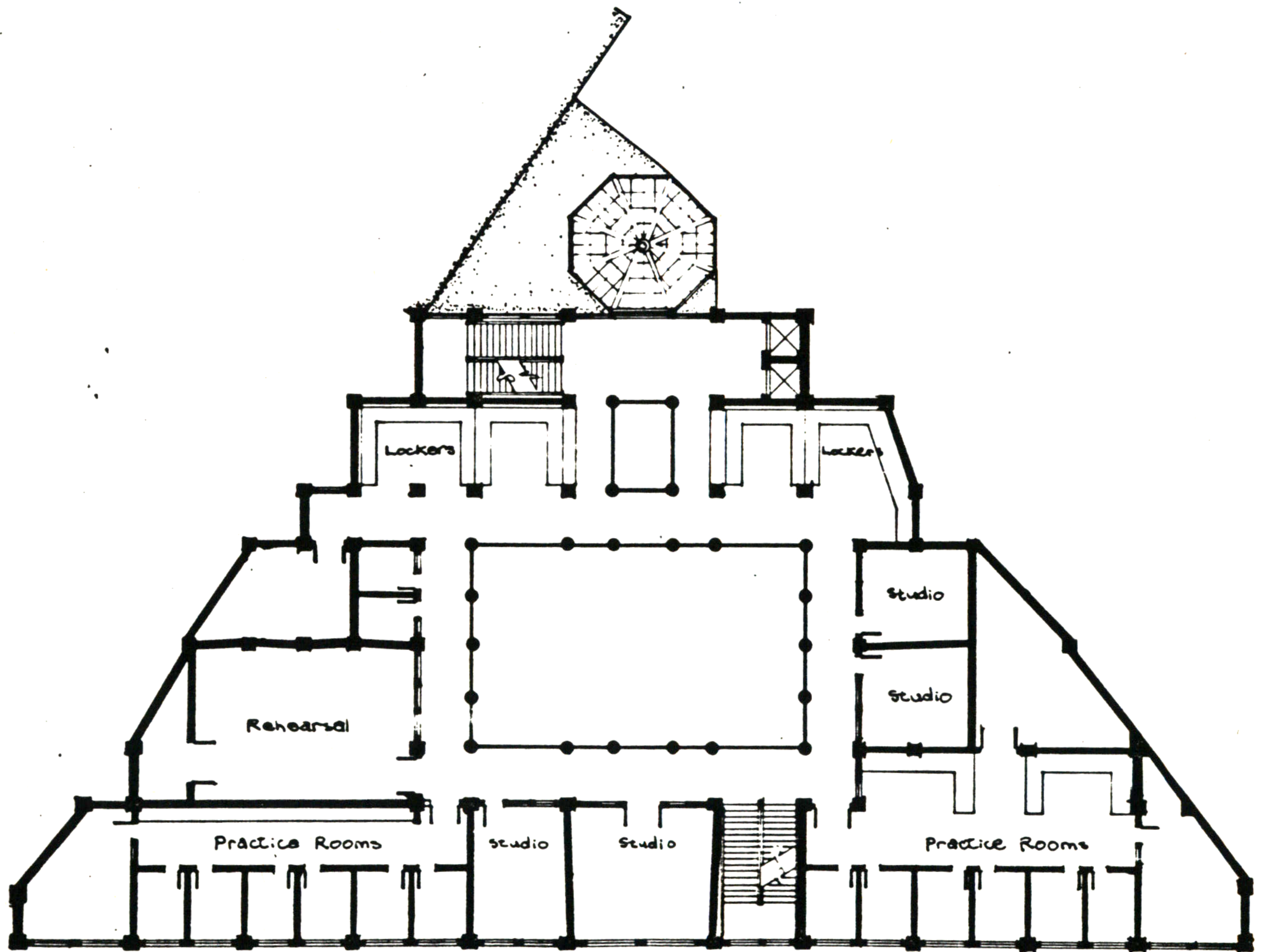
0 20 feet

James McLane

# 54. MUSIC CONSERVATORY



Elevation

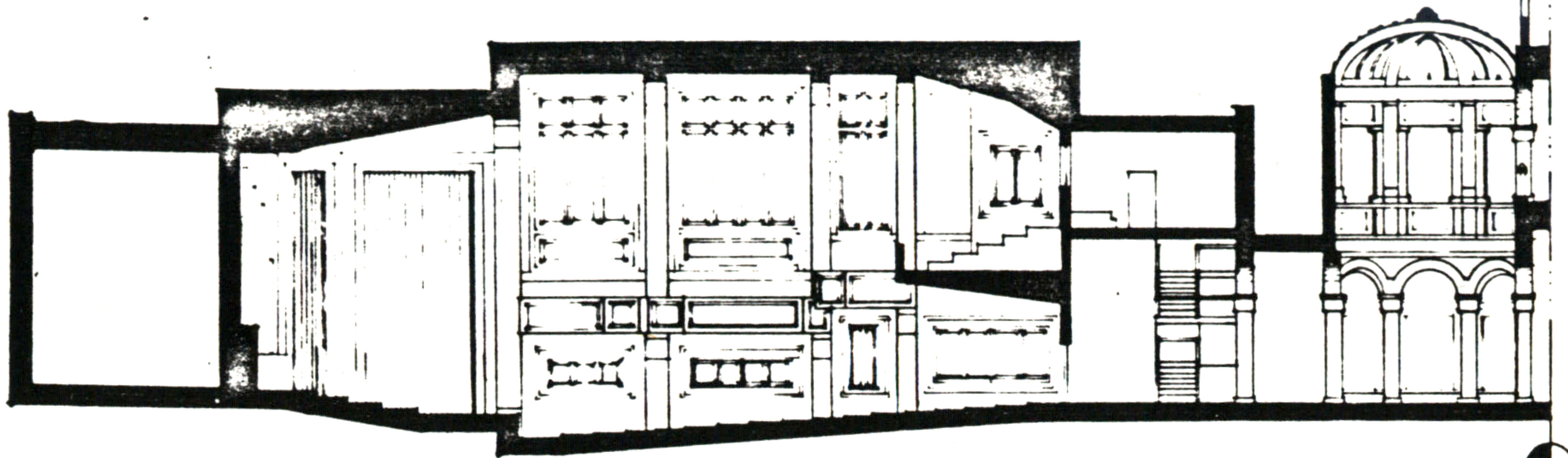


Third Floor Plan

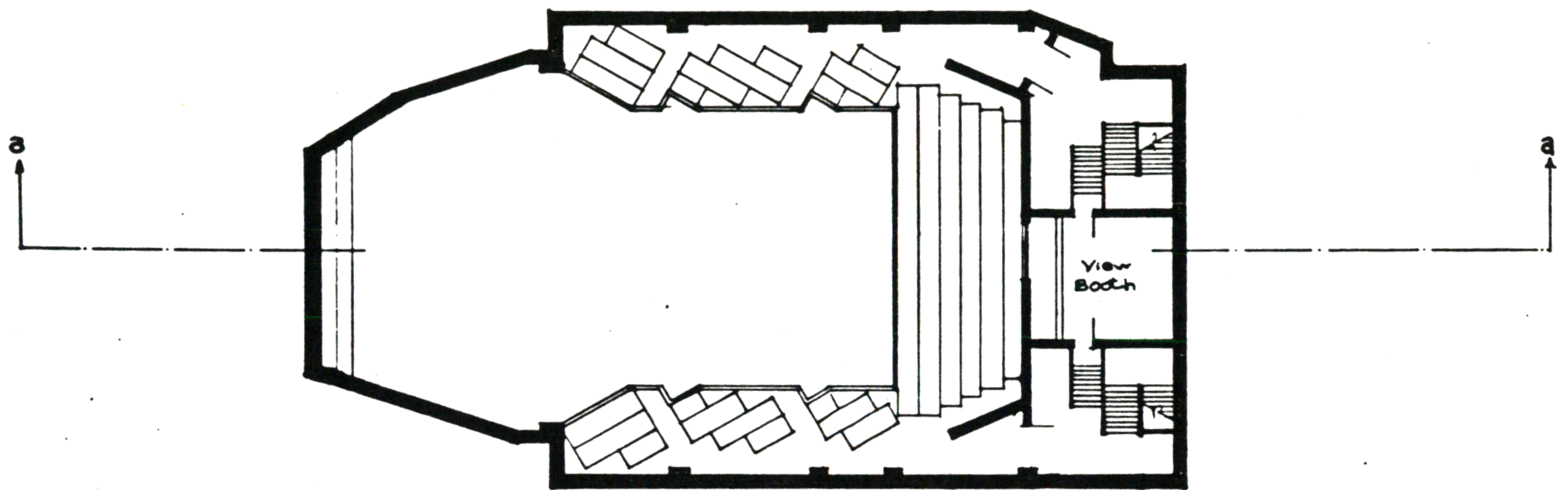


James McLane

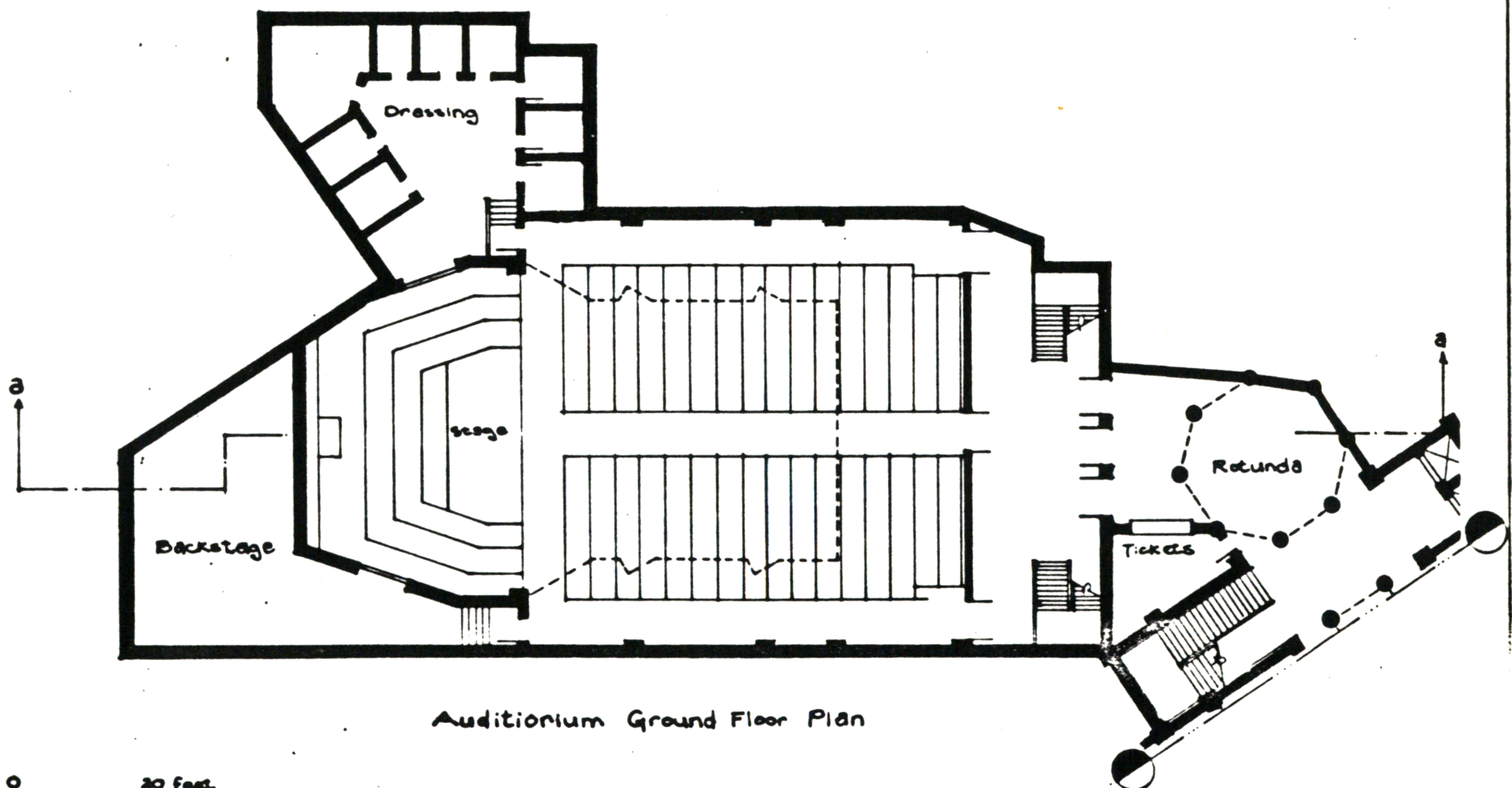
# 54. MUSIC CONSERVATORY



Auditorium Section a-a



Auditorium Balcony Level



Auditorium Ground Floor Plan

0 20 feet

James McLane