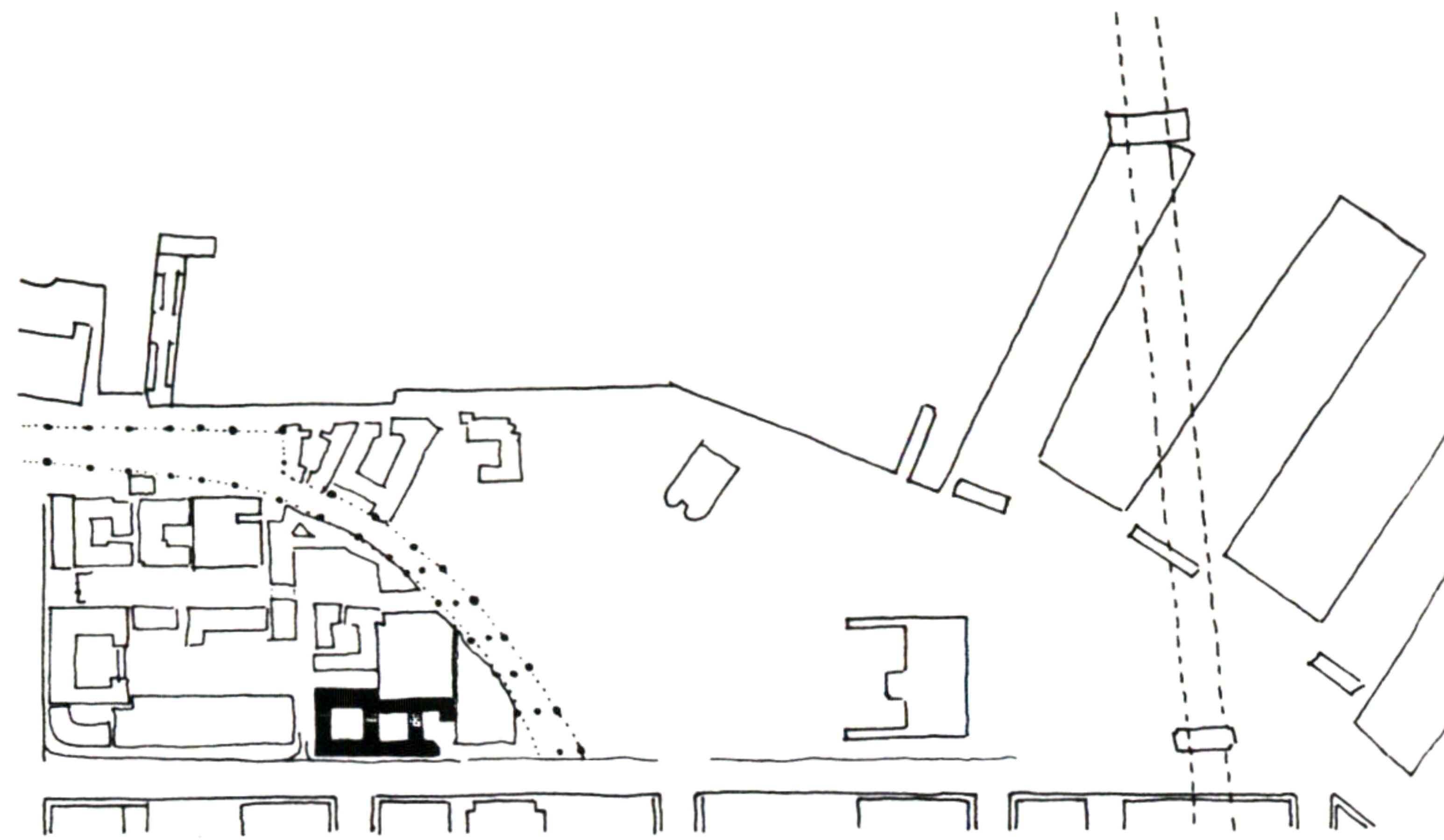


19. RESIDENTIAL BUILDING & BAKERY



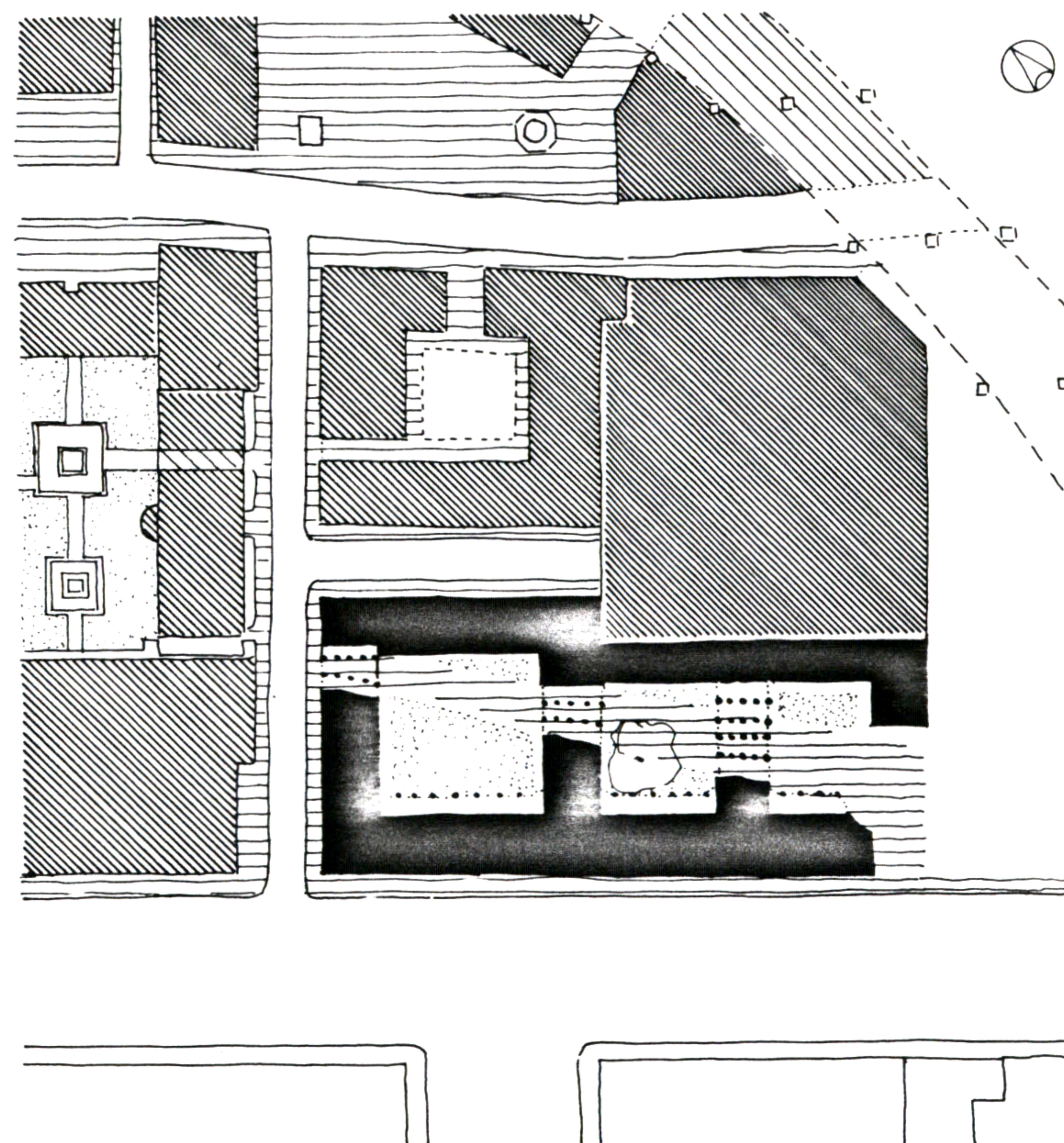
BETWEEN THE EXISTING PARKING STRUCTURE AND SPEAR STREET, AN APARTMENT COMPLEX IS BUILT AROUND THREE COURTYARDS.

THE CENTRAL COURTYARD HAS A LINDENTREE WITH A RING BENCH AND IS NICELY PAVED WHILE THE TWO OTHER HAVE GREEN AND FLOWERS.

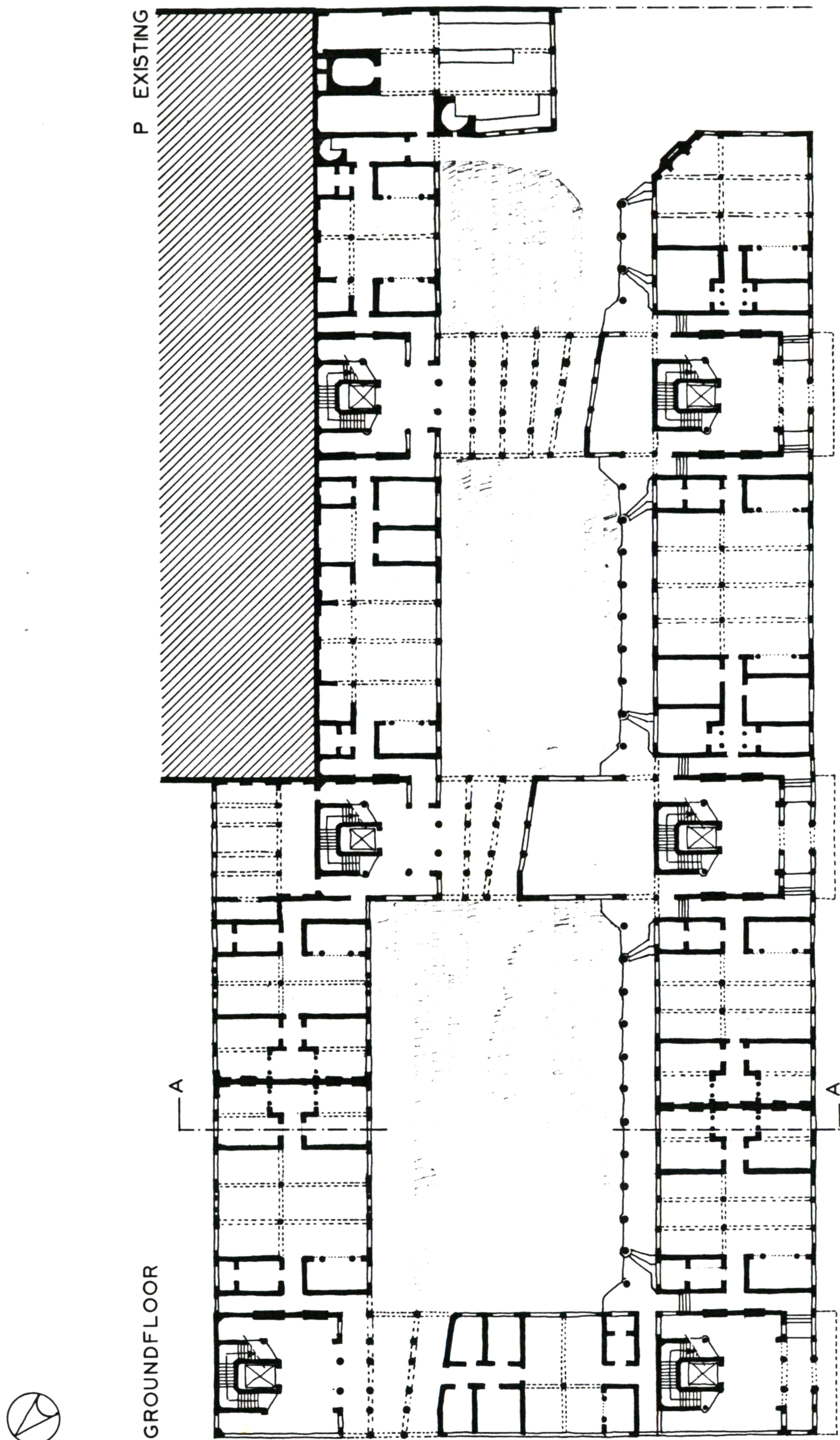
ALL THREE COURTYARDS ARE CONNECTED WITH 6 FT. ALLEYS AND SMALL PATHS THE SOUTH COURTYARD HAS A WOOD OVEN BAKERY IN THE S.E. CORNER.

THE COMPLEX HAS 4 STOREYS WITH ROOFGARDEN, ALONG SPEAR AND 6 STOREYS WITH GLASSHOUSES ON TOP NEAR THE PARKING STRUCTURE.

ALL 4 FLOORS ALONG SPEAR HAVE 6 FT. GALERIES TO THE NORTHSIDE.



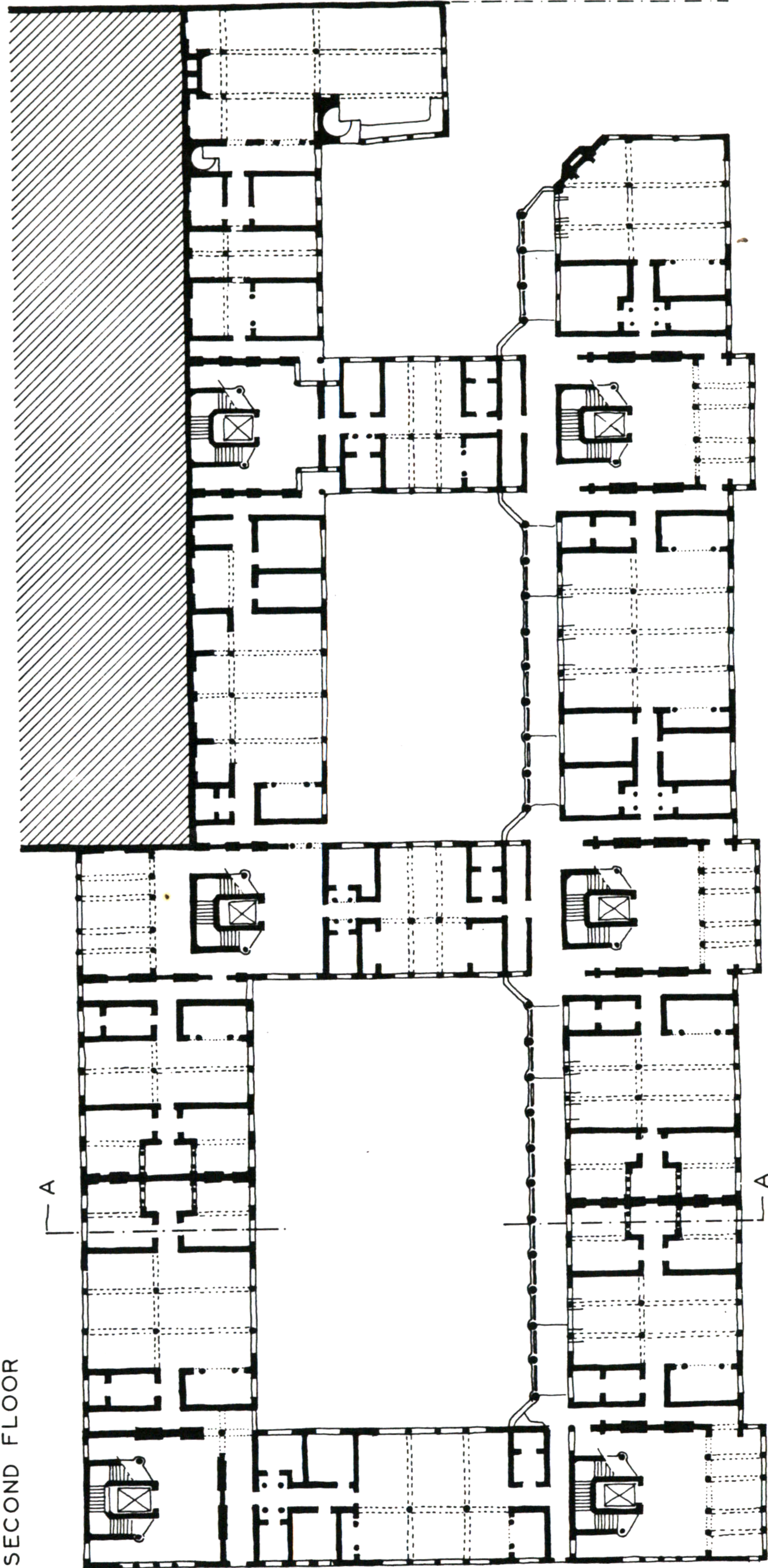
19. RESIDENTIAL BUILDING & BAKERY



Hubert Froyen

19. RESIDENTIAL BUILDING & BAKERY

EXISTING P

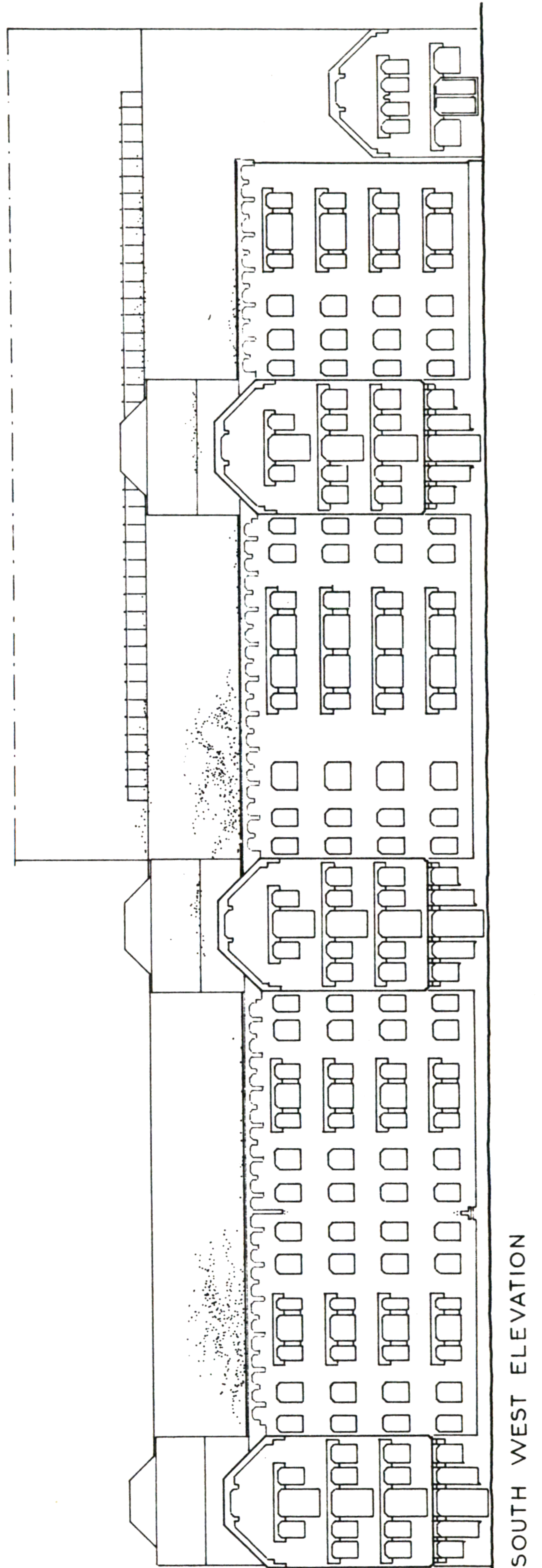
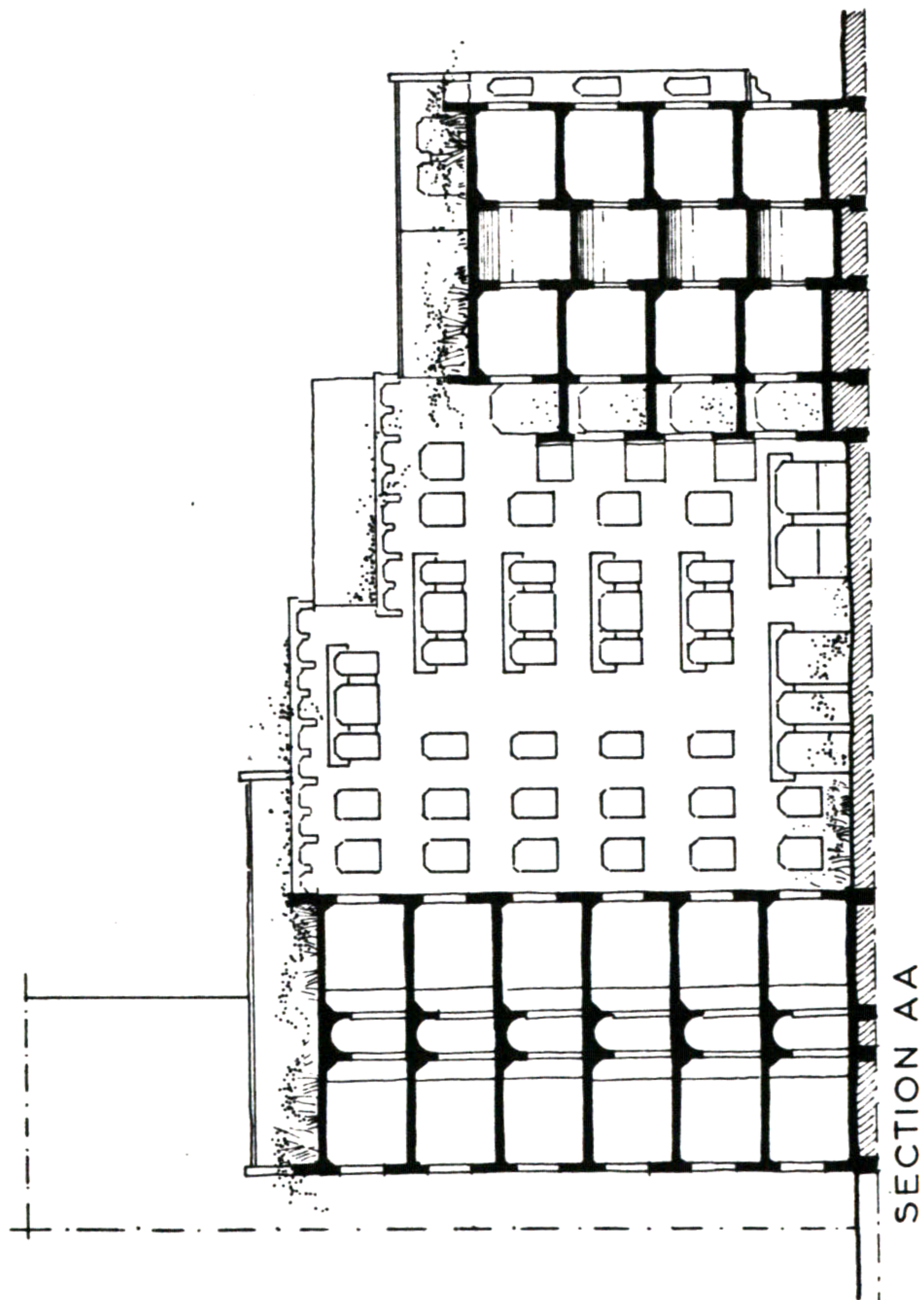
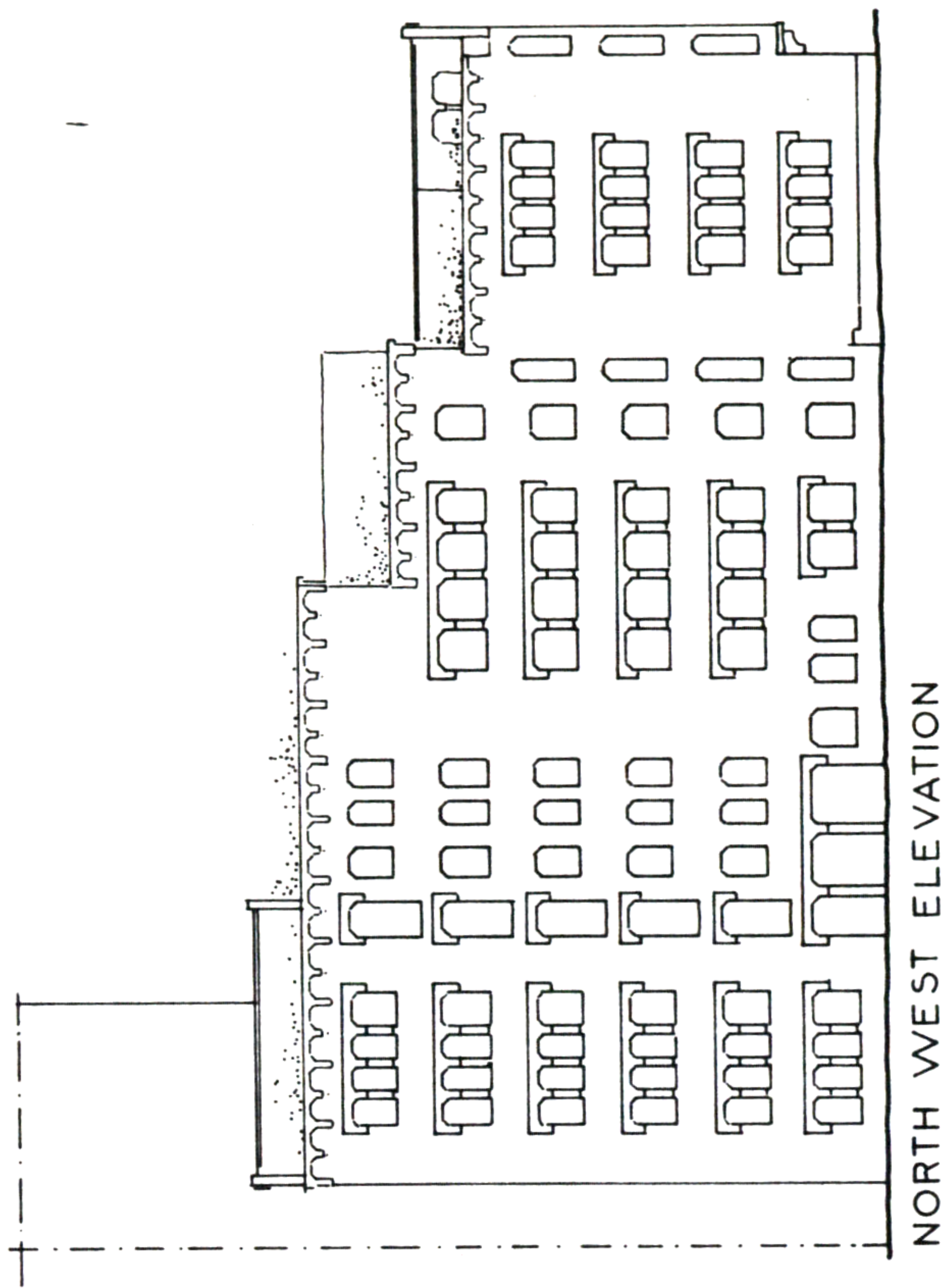


SECOND FLOOR



Hubert Froyen

19. RESIDENTIAL BUILDING & BAKERY

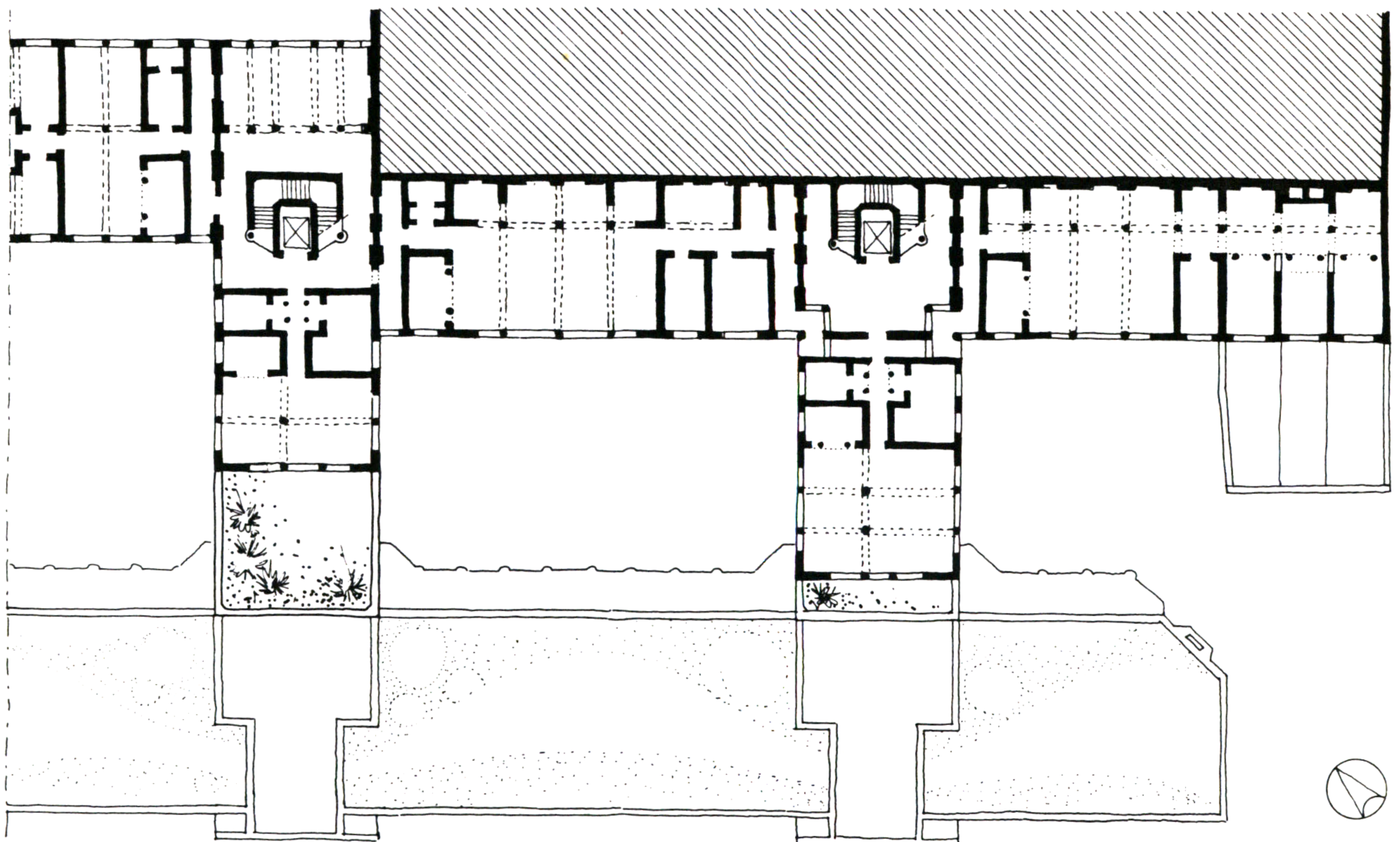


Hubert Froyen

19. RESIDENTIAL BUILDING & BAKERY



SOUTH WEST ELEVATION



SIXTH FLOOR

Hubert Froyen