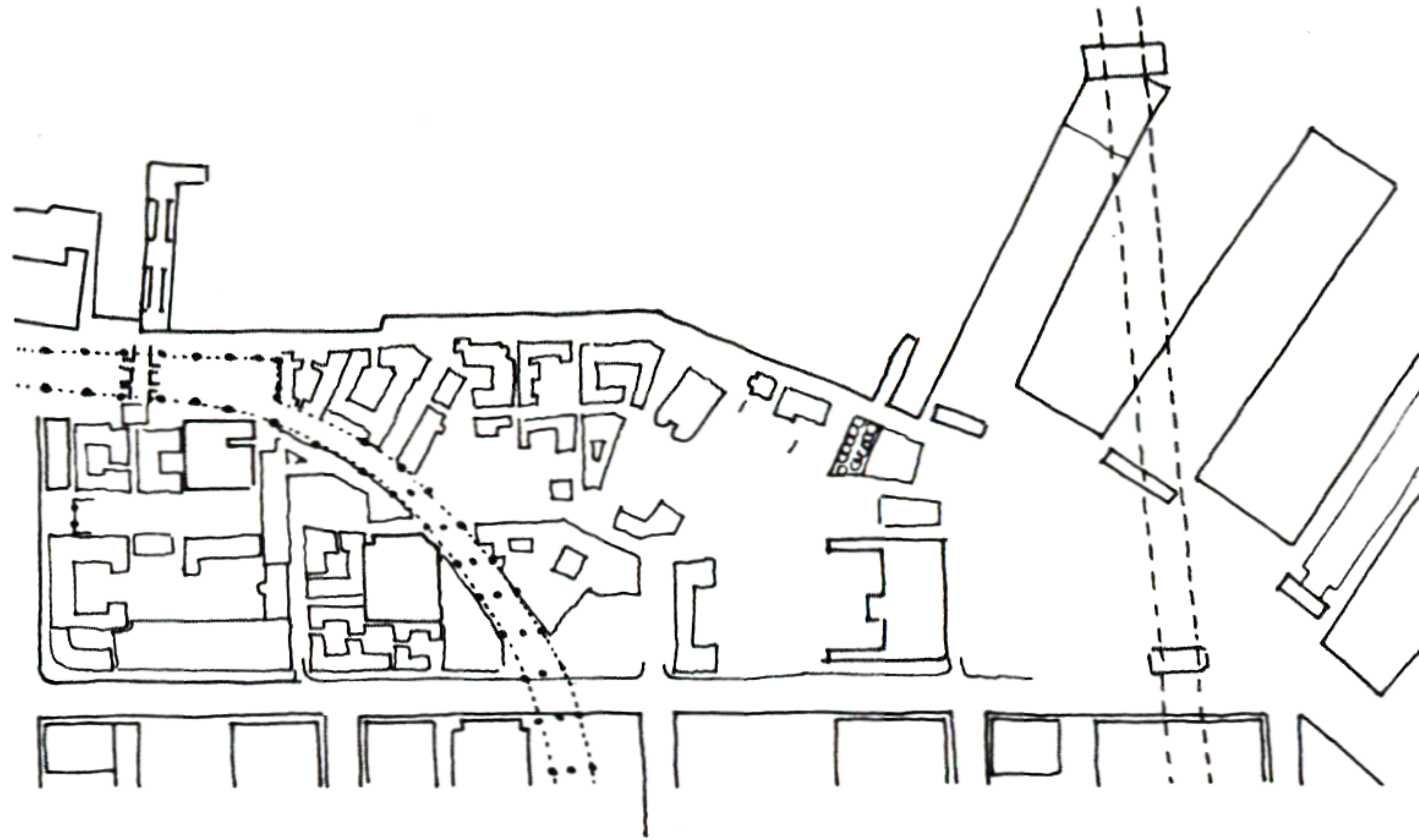
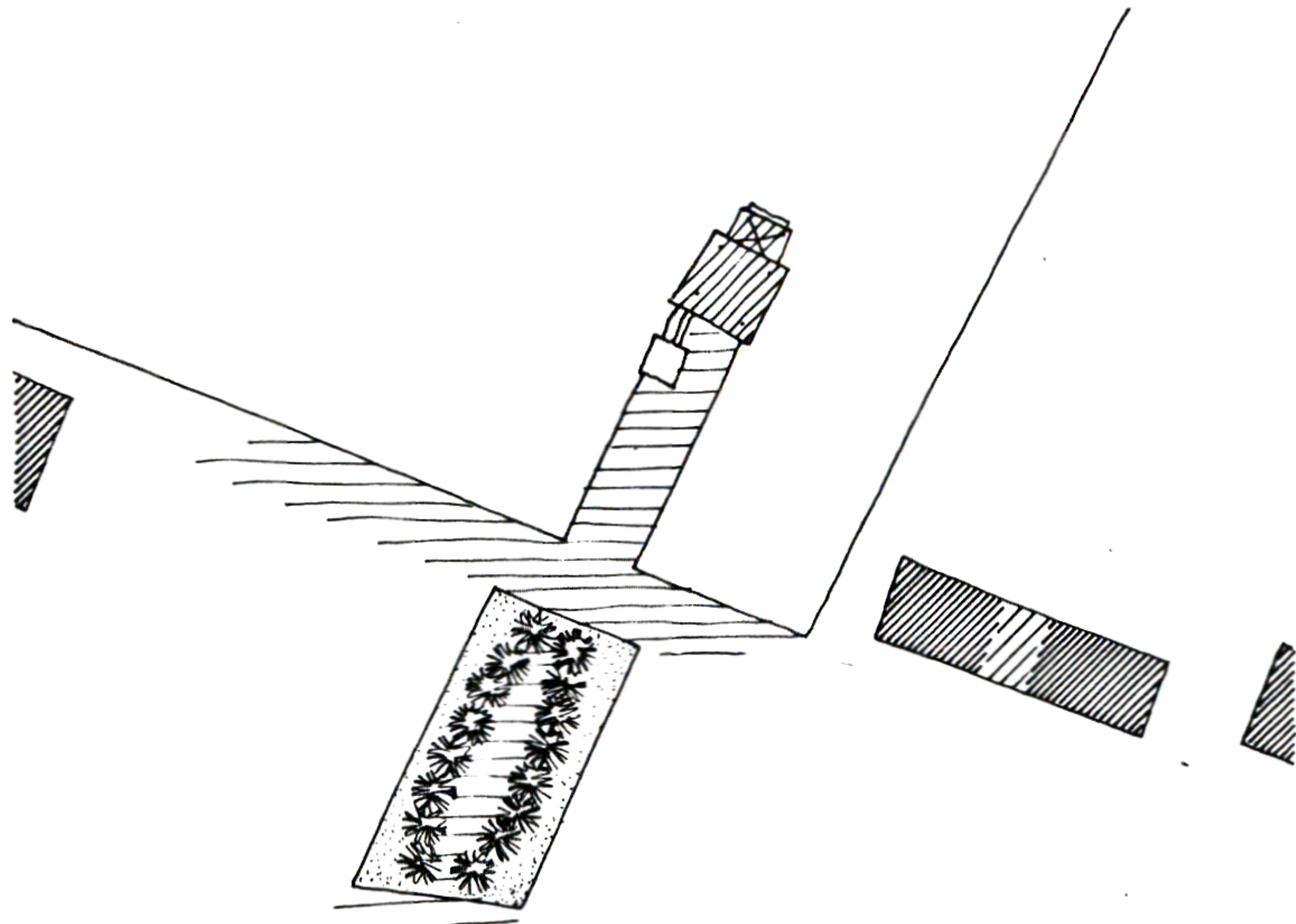


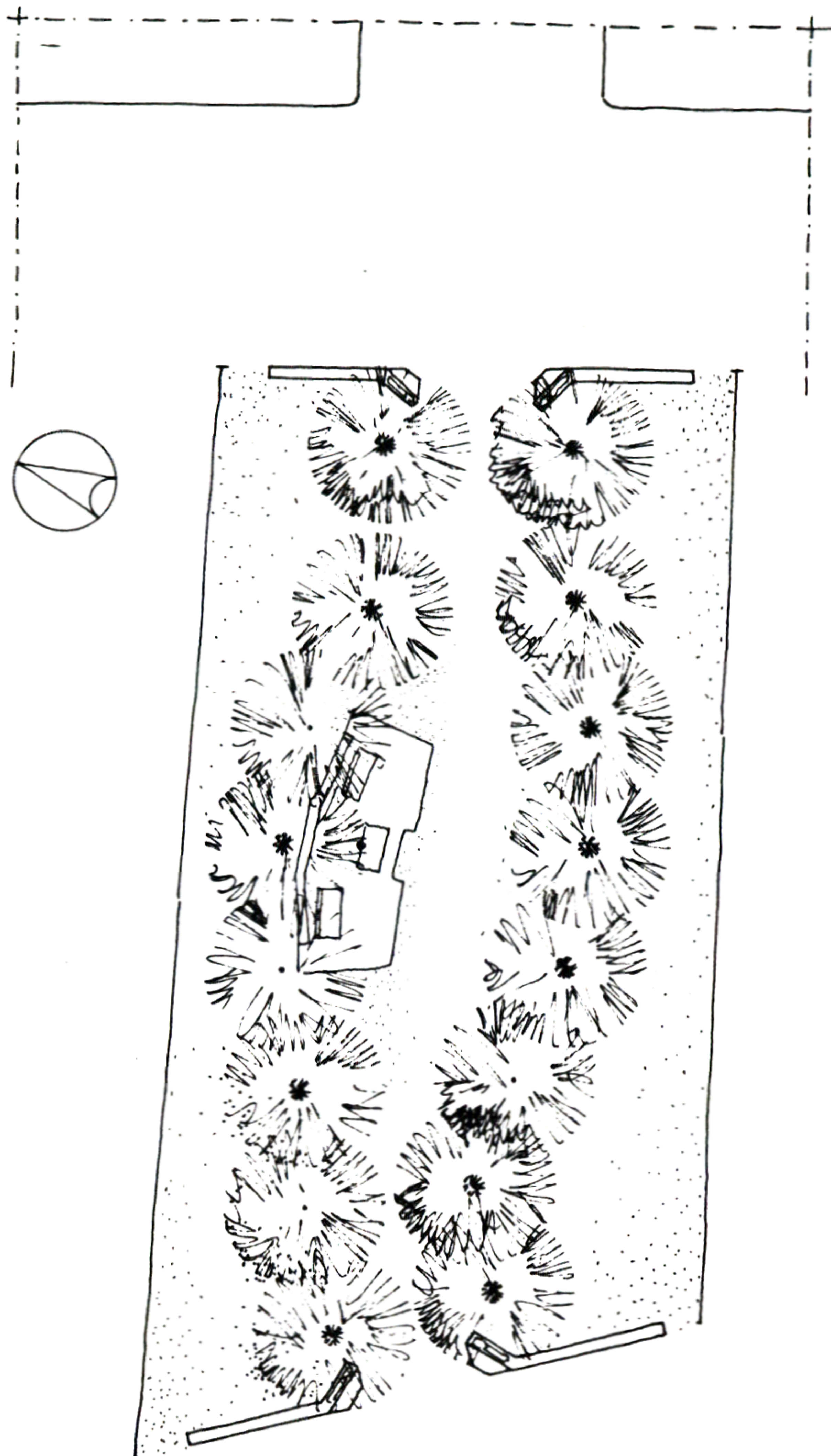
## 57. SMALL PARK



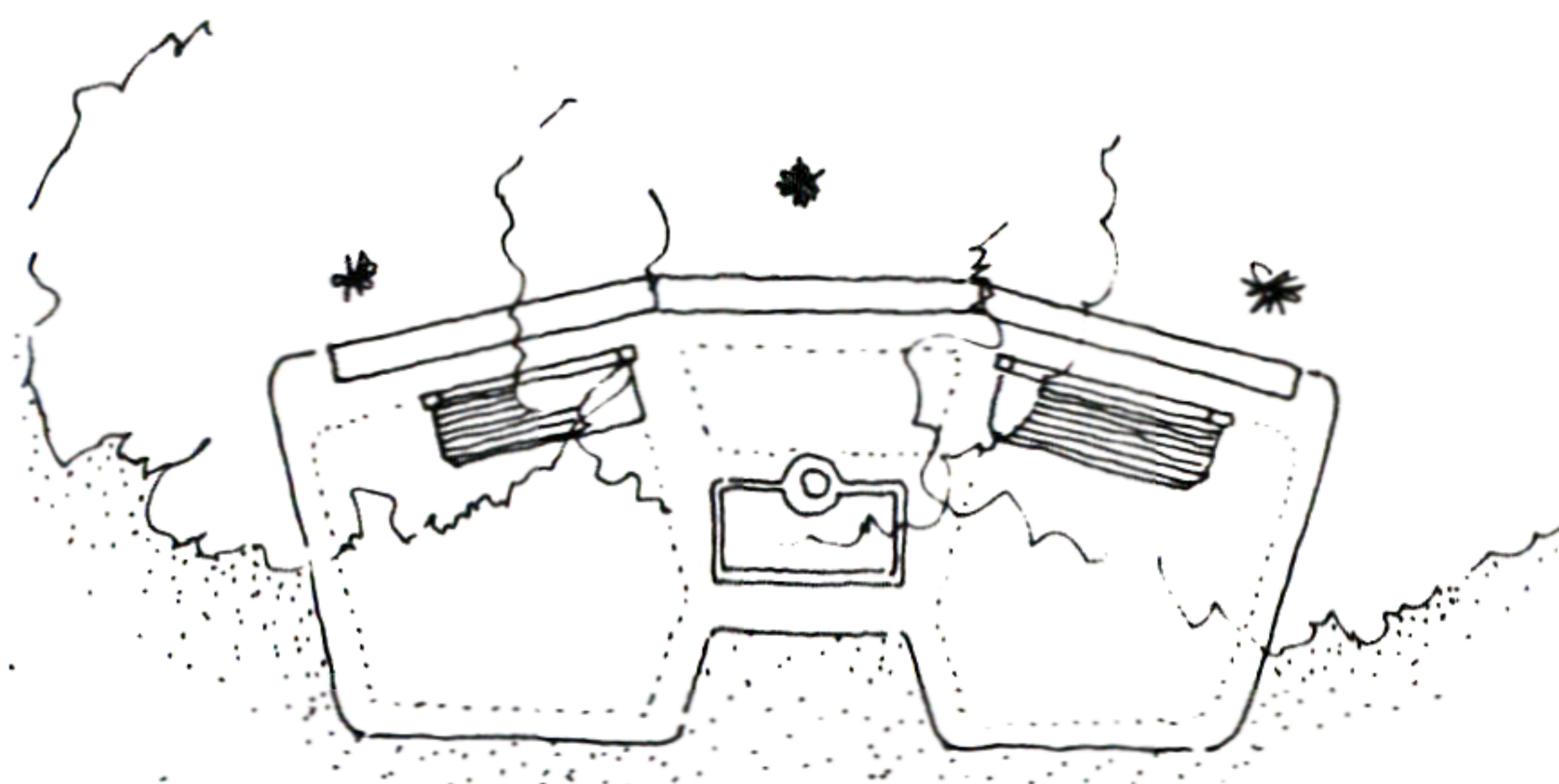
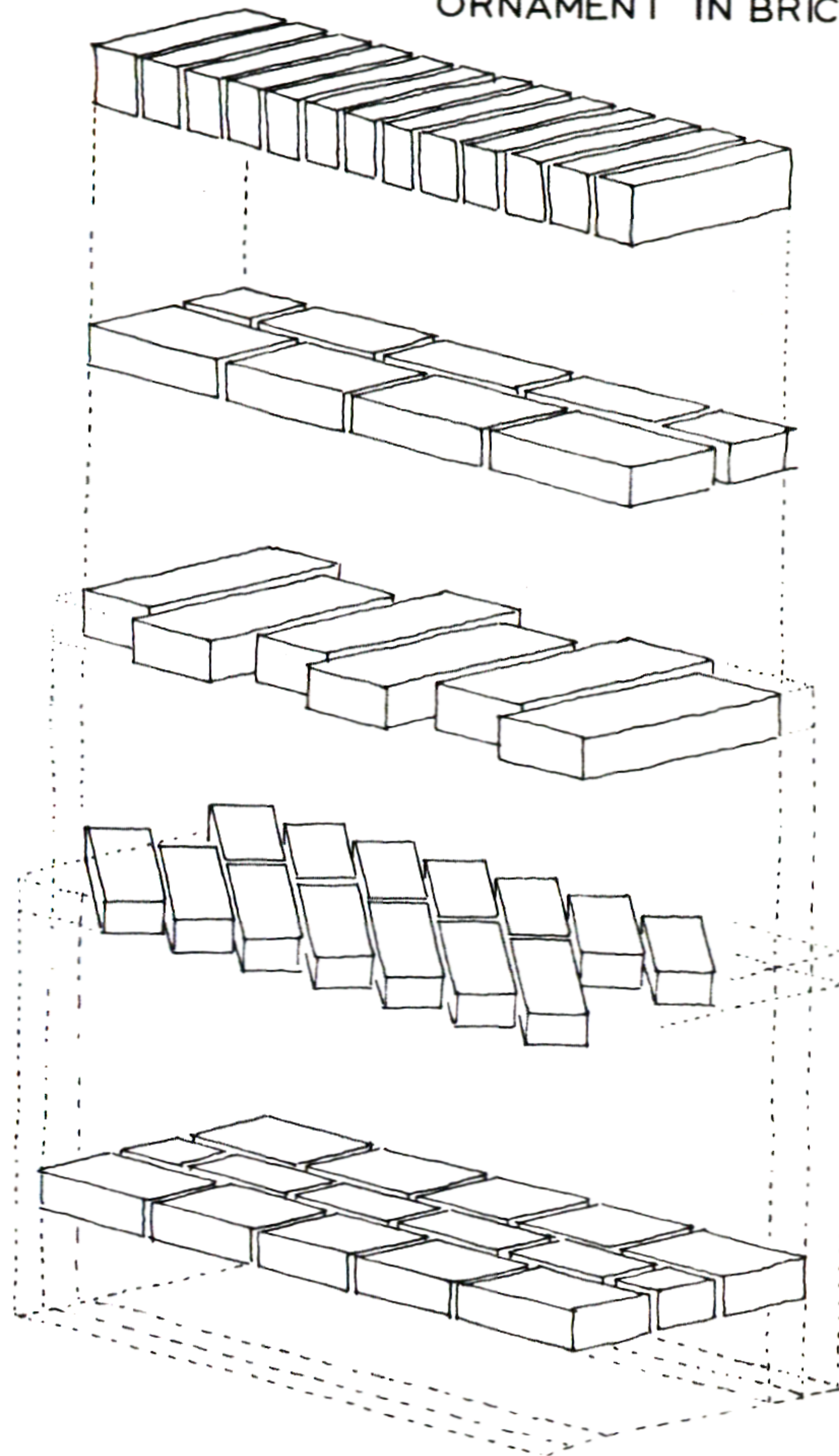
OPPOSITE THE PAVILION ON THE SMALL PIER A 60' BY 100' PARK IS LAID OUT.  
IT LEAVES A STREET OF 40' ALONG THE WATER EDGE AND HAS A GRAVEL LANE,  
ROUGHLY AT A RIGHT ANGLE TO THE WATER EDGE.  
THIS LANE NARROWS AT BOTH ENDS AND IS FORMED BY LINDENTREES.  
THE PERIPHERAL SPACE IS GRADUALLY FILLED WITH SMALL ROCKS AND NATIVE  
PLANTS.  
ON ONE SIDE OF THE LANE THERE ARE TWO BENCHES AND A WATER PUMP.



# 57. SMALL PARK



ORNAMENT IN BRICK



SOUTH WEST ENTRANCE

