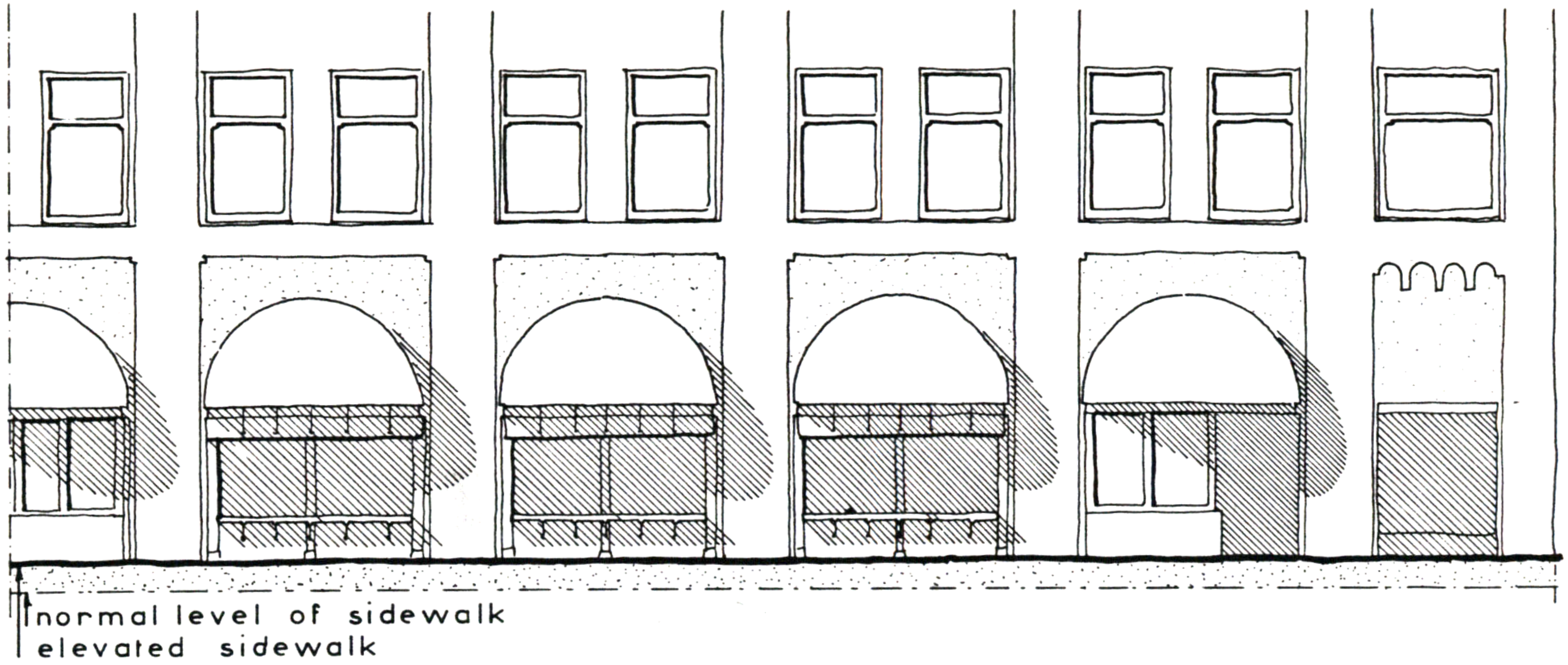
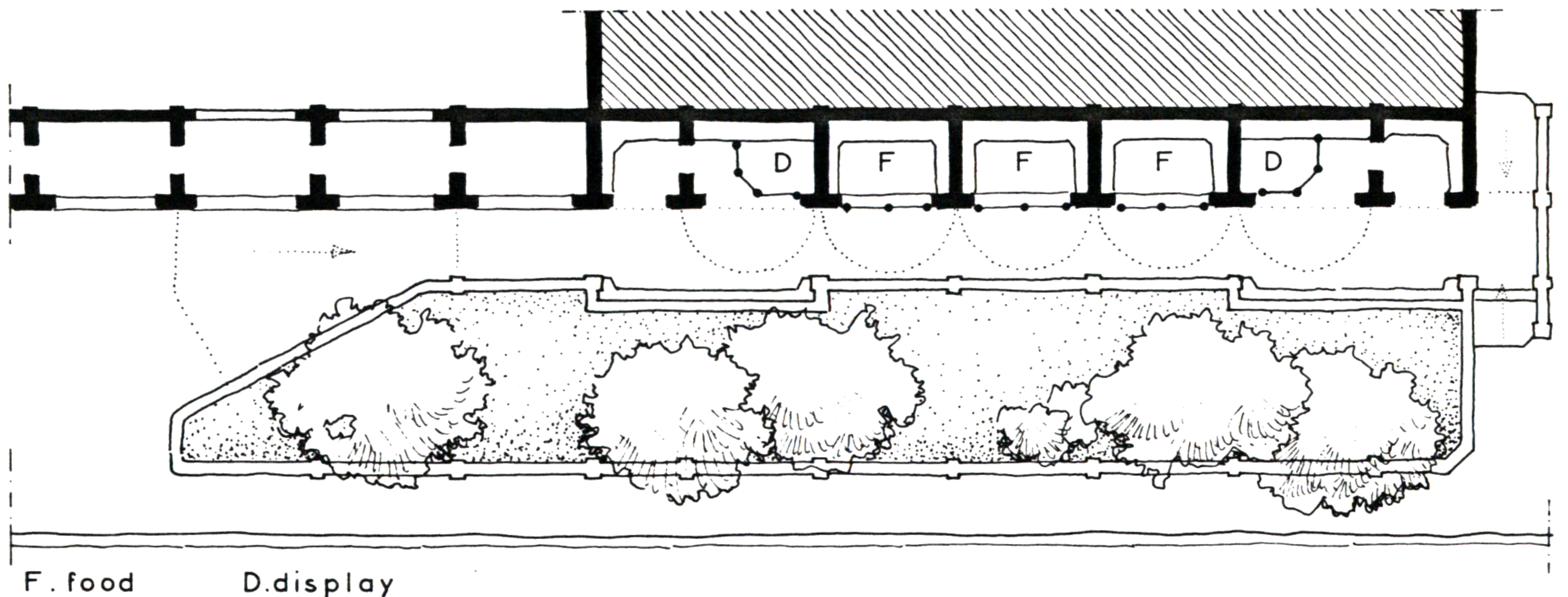


85. FLOWERS & SEATS

SOUTH WEST ELEVATION

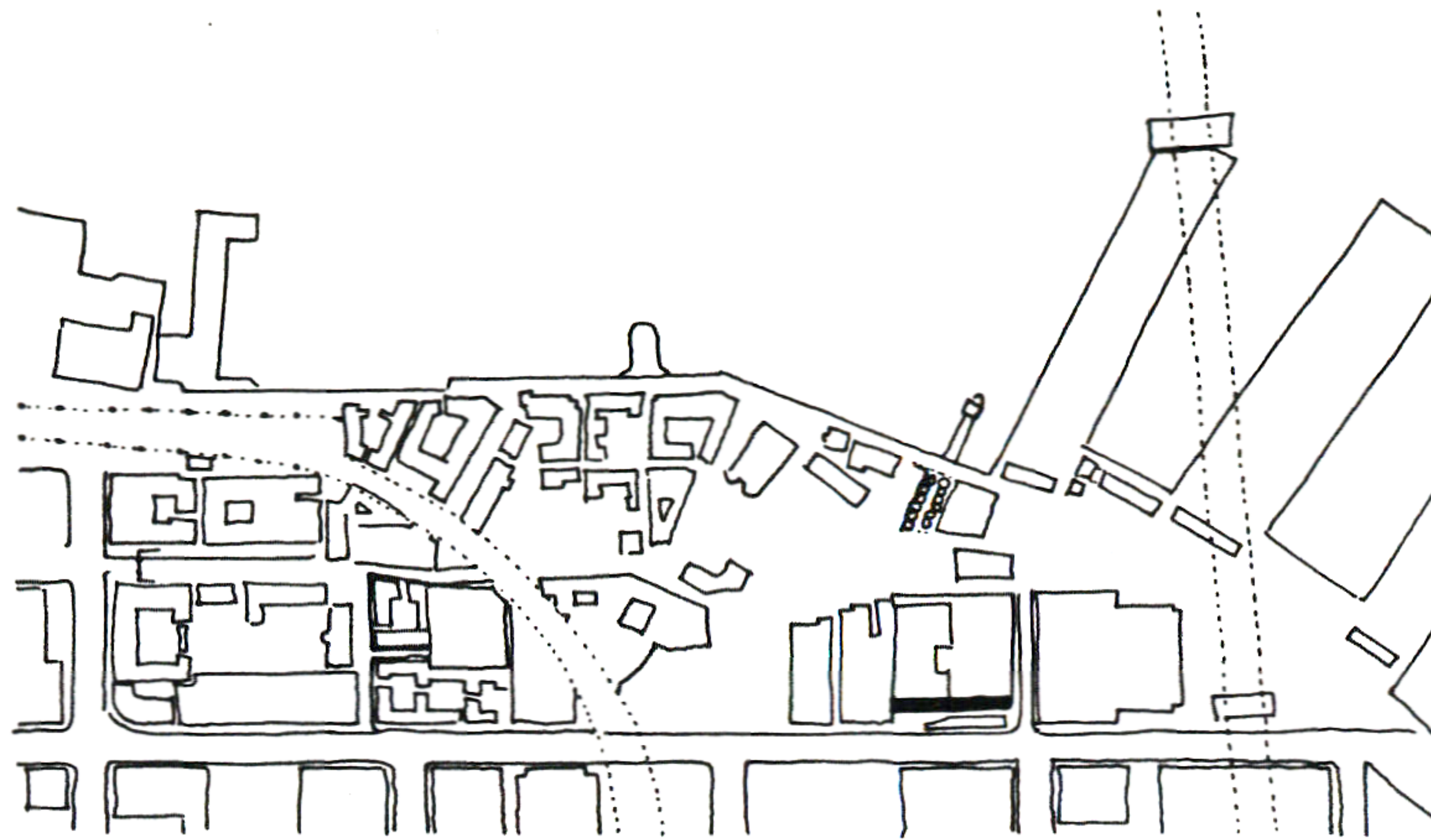


SOUTH WEST ELEVATION



Hubert Froyen

85. FLOWERS & SEATS



THE LOADINGDOCK TO THE SOUTH WEST OF THE TECHNICAL HIGHSCHOOL IS PARTLY CONVERTED INTO FOOD- AND DRINKSTANDS.

TWO SPACES, AT EACH CORNER OF THE MAIN BUILDING, ARE USED FOR SITTING AND DISPLAY OF STUDENTS' WORK.

ROUGHLY IN THE MIDDLE OF THE WIDE SIDEWALK, THERE IS A FLOWERBED, WITH TREES AND BUSHES, SURROUNDED BY A 4 FT WALL, HOLDING TWO LONG BENCHES AGAIN.

THE SIDEWALK, BETWEEN THE BUILDING AND THE FLOWERBED, IS RAISED 2 FT.

