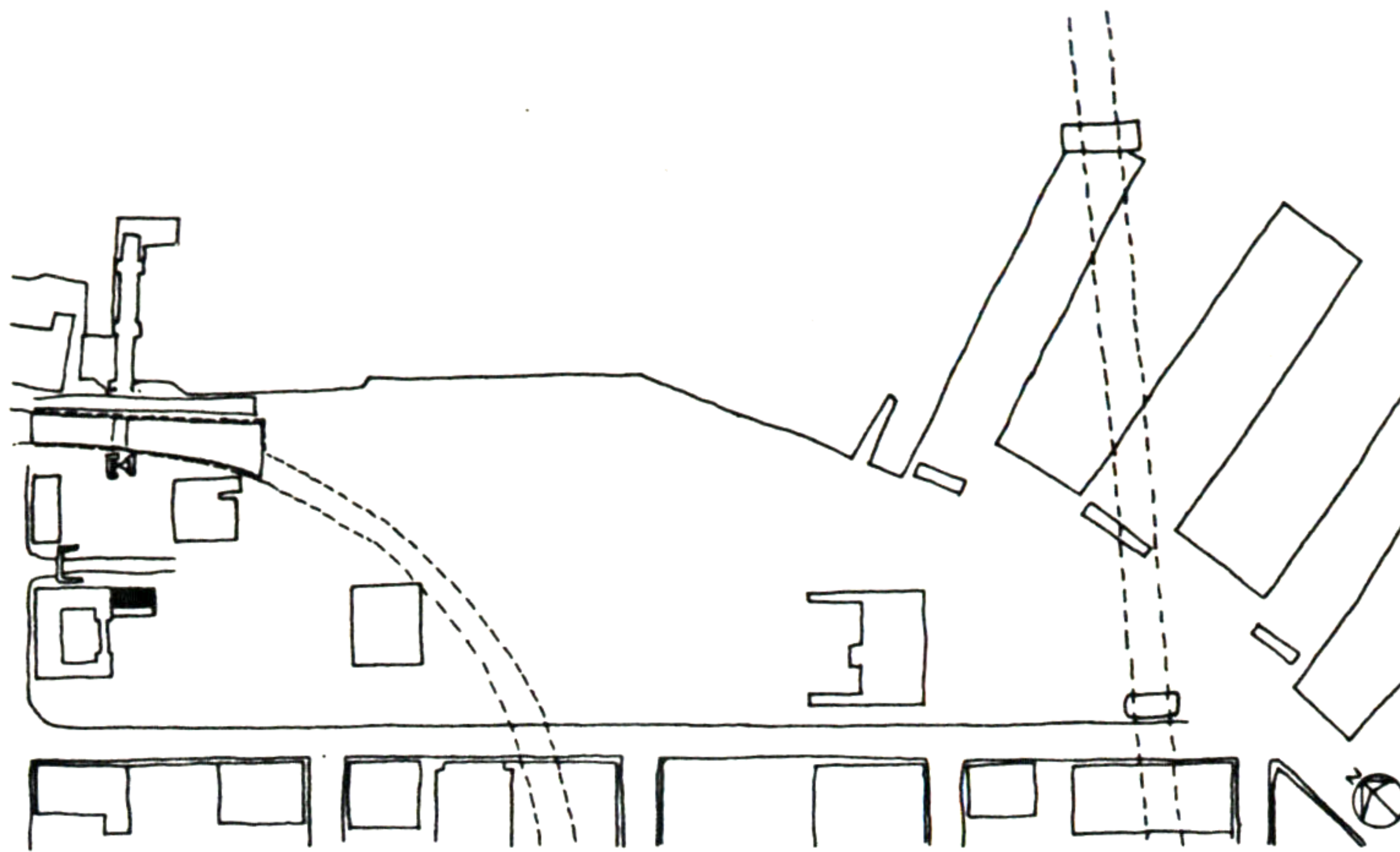


4. CAFE

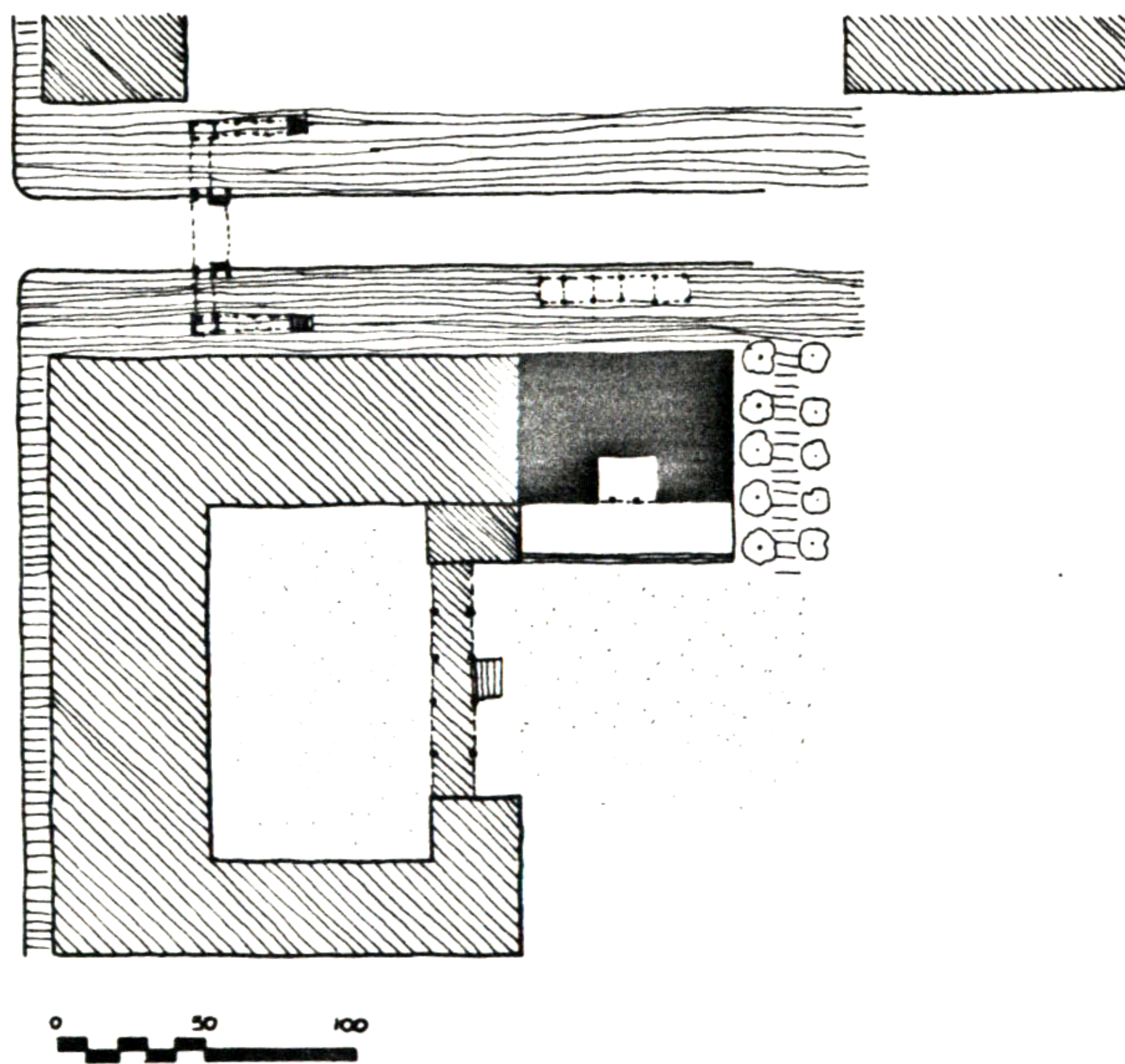


WHEN YOU PASS THROUGH THE GATE, ON YOUR RIGHT SIDE YOU SEE A THREE STORY CAFE. THE FRONT OF THE CAFE FACES A BUSY PEDESTRIAN SIDEWALK, THE BACK, WITH ITS SUNNY TERRASSE, STARTS TO DEFINE A PUBLIC GARDEN.

YOU HAVE A CHOICE OF SEVERAL DIFFERENT ATMOSPHERE IN WHICH TO DRINK YOUR COFFEE. YOU CAN SIT UNDER THE TRELLIS AND TAKE PART IN THE LIFE OF THE STREET, OR YOU CAN SIT INSIDE IN THE GALLERY AND WATCH WHAT'S GOING ON IN THE STREET. IF YOU PREFER TO SIT IN A MORE QUIET PLACE AND PLAY TABLE GAMES SUCH AS CHESS, BACKGAMMON, CARDS, GO, DOMINO..., YOU CAN SIT EITHER IN THE ALCOVES WHICH FACES THE GARDEN, OR SIT ON THE TERRASSE WHERE YOU CAN ENJOY THE SUN.

THE SECOND AND THIRD FLOOR ARE TWO MORE PRIVATE MEZZANINES WHERE YOU CAN LISTEN TO SOME MUSIC, OR HAVE A MEETING WITH SOME FRIENDS.

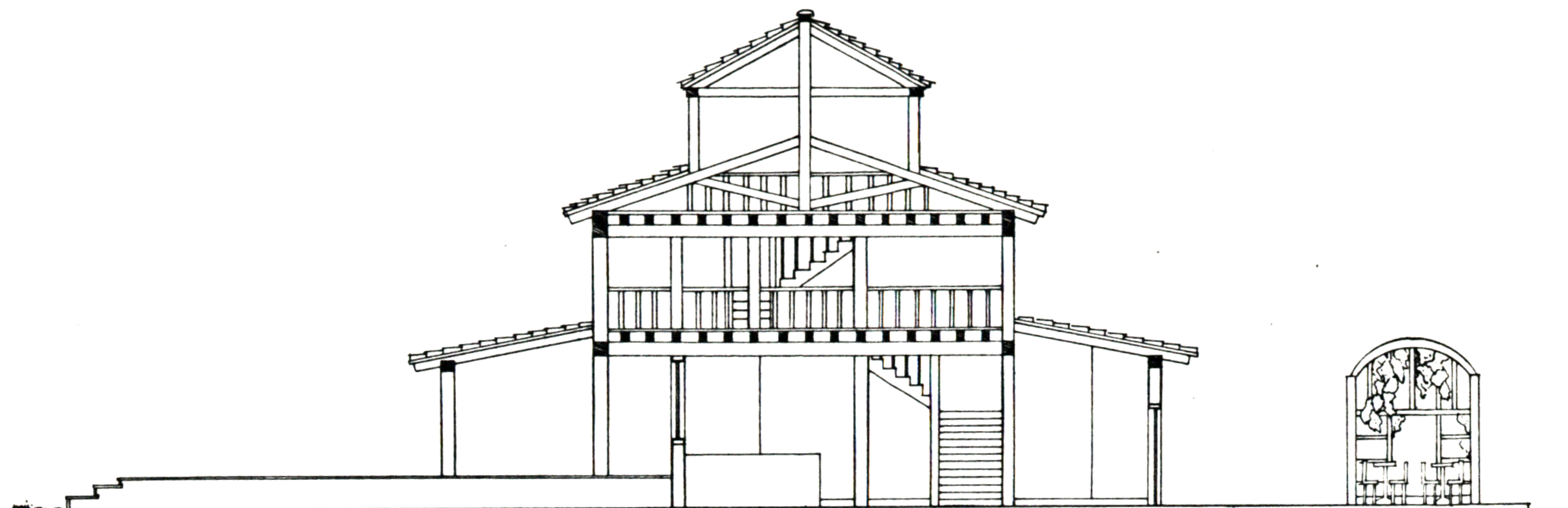
THE BUILDING WILL BE CONSTRUCTED FROM WOODEN TRUSSES AND HAS MORE OR LESS THE SHAPE OF A TENT.



SITE PLAN

Martine Weissmann

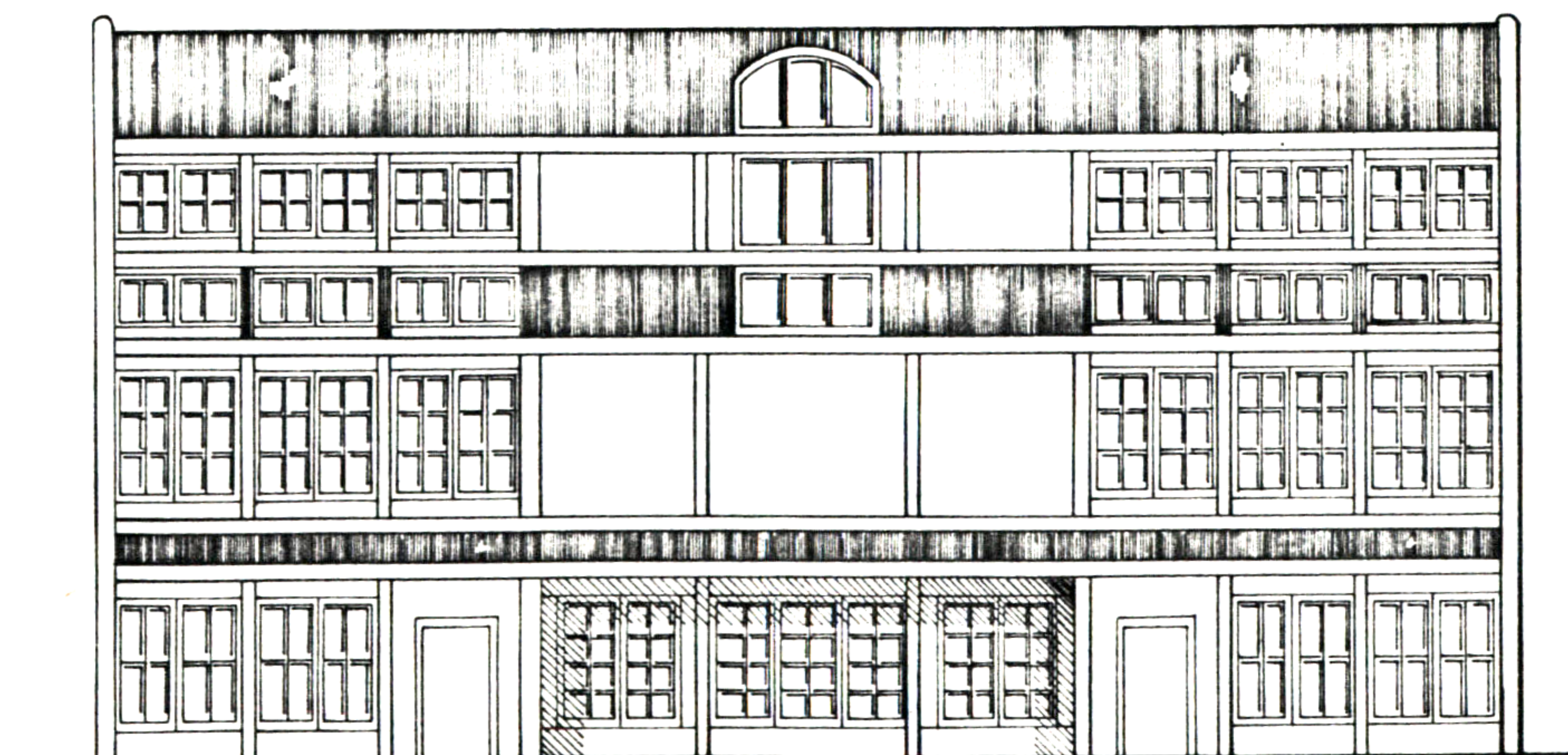
4. CAFE



SECTION AA



NORTH EAST ELEVATION

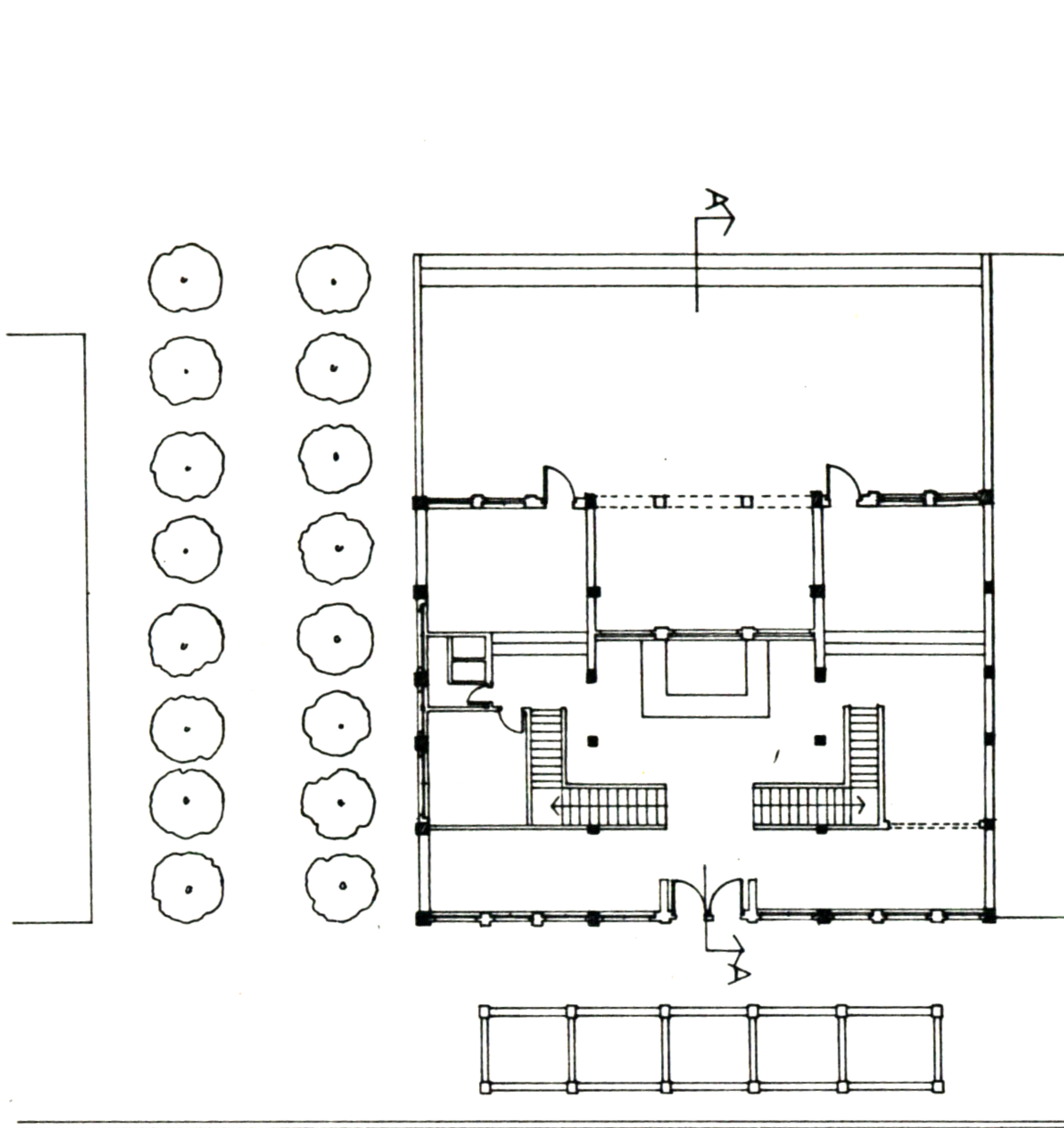


SOUTH WEST ELEVATION

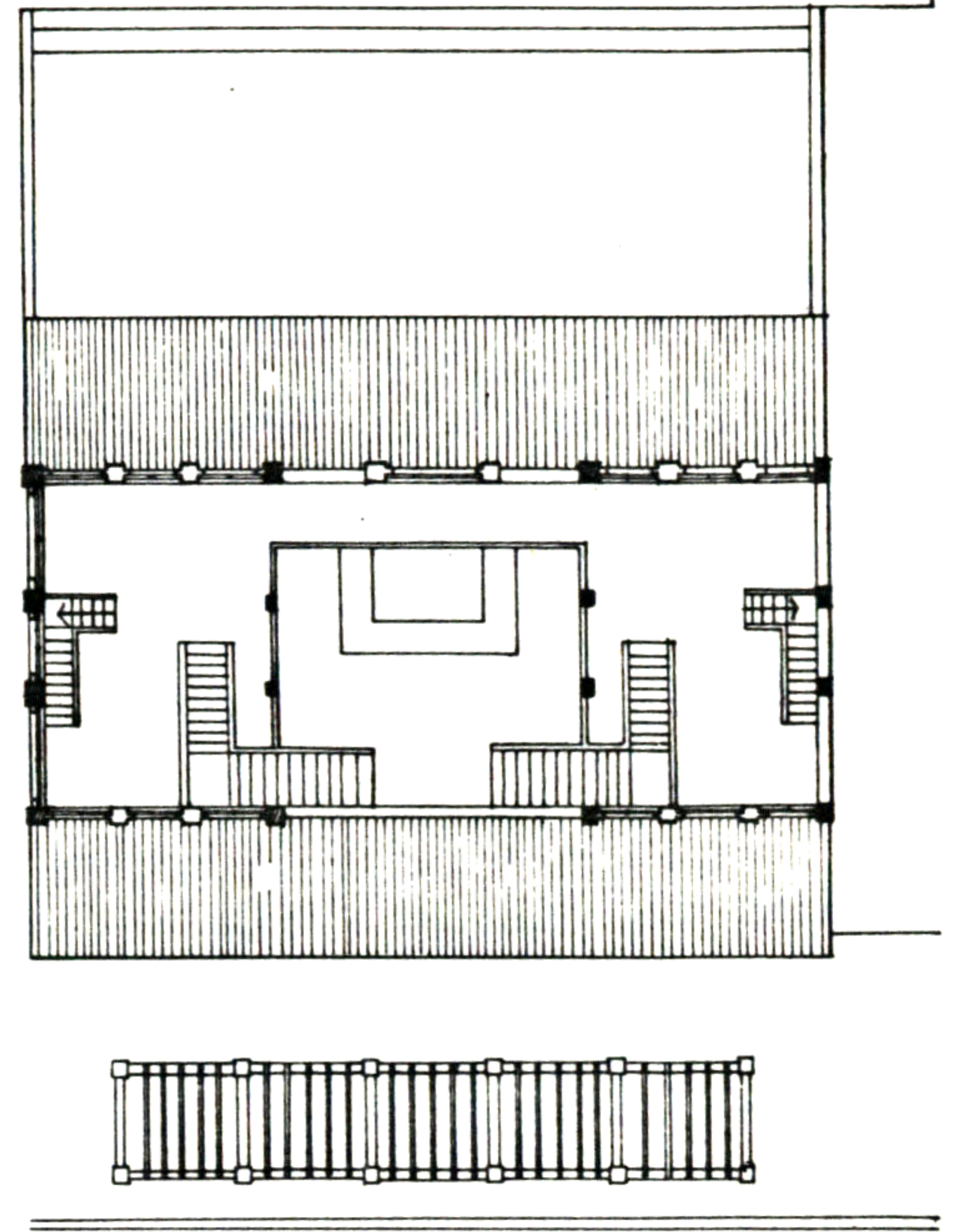


Martine Weissmann

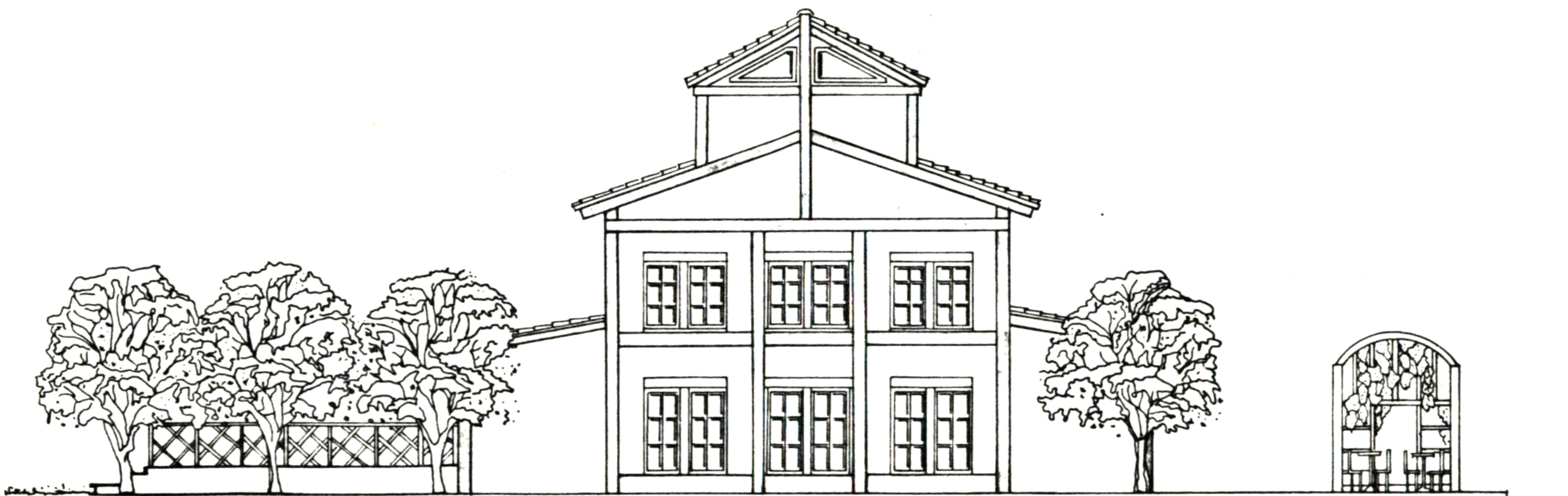
4. CAFE



GRO UND FLOOR PLAN



FIRST FLOOR PLAN



SOUTH EAST ELEVATION



Martine Weissmann