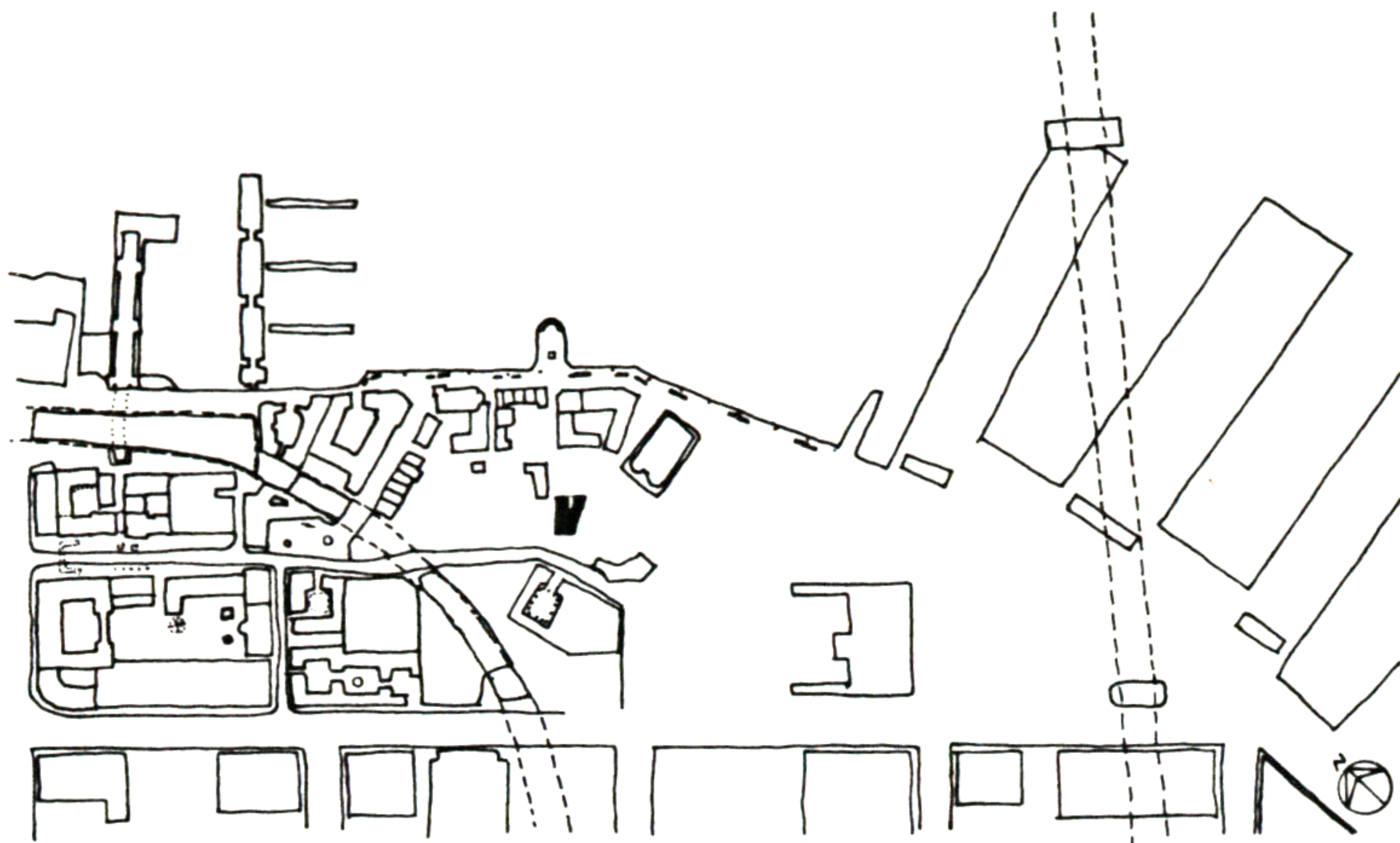


37. POLITICAL MEETING HALL & APTS.

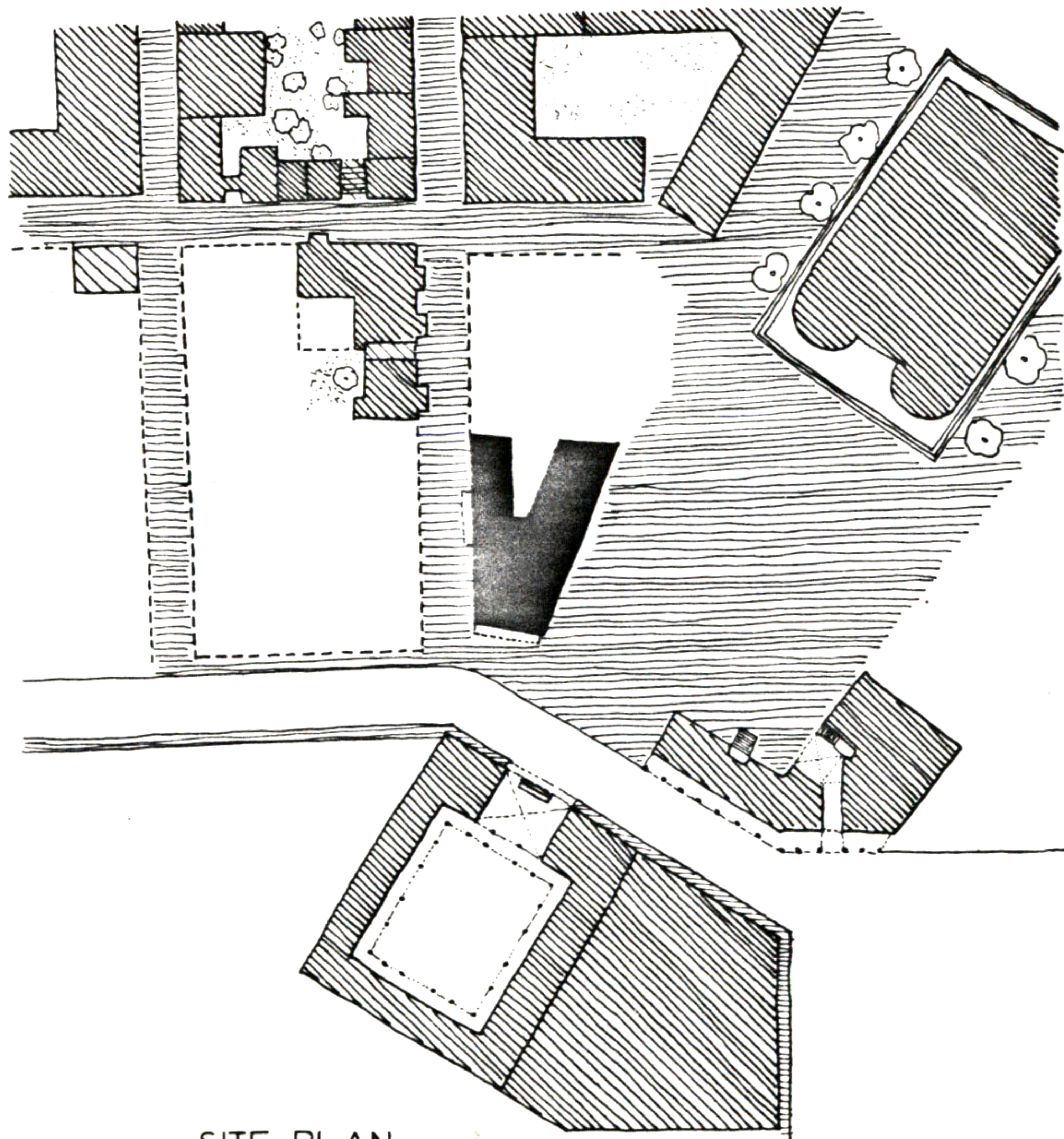


THIS BUILDING IS LOCATED ON THE NORTH-WEST CORNER OF THE MAIN SQUARE. THE BUILDING IS CONSISTED OF A POLITICAL MEETING HALL AND A BOOKSTORE ON THE TWO FIRST FLOORS AND OF APARTMENTS ON THE UPPER FLOORS.

WHEN YOU WALK DOWN THE SQUARE, ONCE YOU PASS THE BATH, YOU SEE ON YOUR RIGHT SIDE THE MAIN ENTRANCE OF THE POLITICAL HALL. WHEN YOU ENTER YOU ARE IMMEDIATELY IN THE BIG LOBBY WHERE PEOPLE HAVE ENDLESS DISCUSSIONS. ON THE GROUND FLOOR THERE IS ALSO THE MAJOR ROOM FOR ALL THE MEETING OF THE COMMUNITY.

ON THE SECOND FLOOR THERE ARE ROOMS AVAILABLE FOR ALL DIFFERENT KINDS OF ASSEMBLIES.

THE ENTRANCE INTO THE BOOKSTORE AND INTO THE APARTMENTS FACES THE STREET WHICH CROSS THE SITE.



SITE PLAN

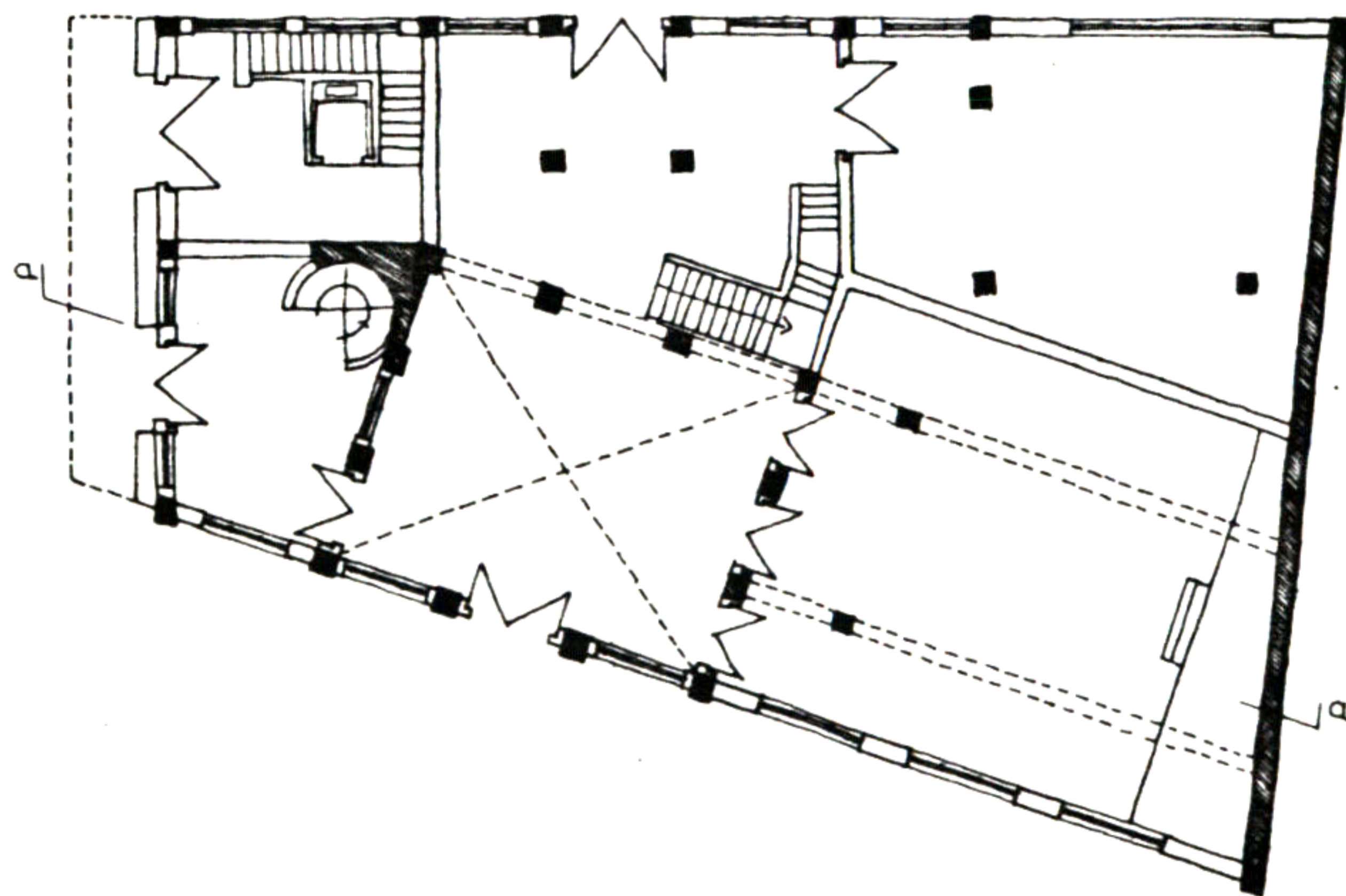


Martine Weissmann

37. POLITICAL MEETING HALL & APTS.



ELEVATION ON THE SQUARE

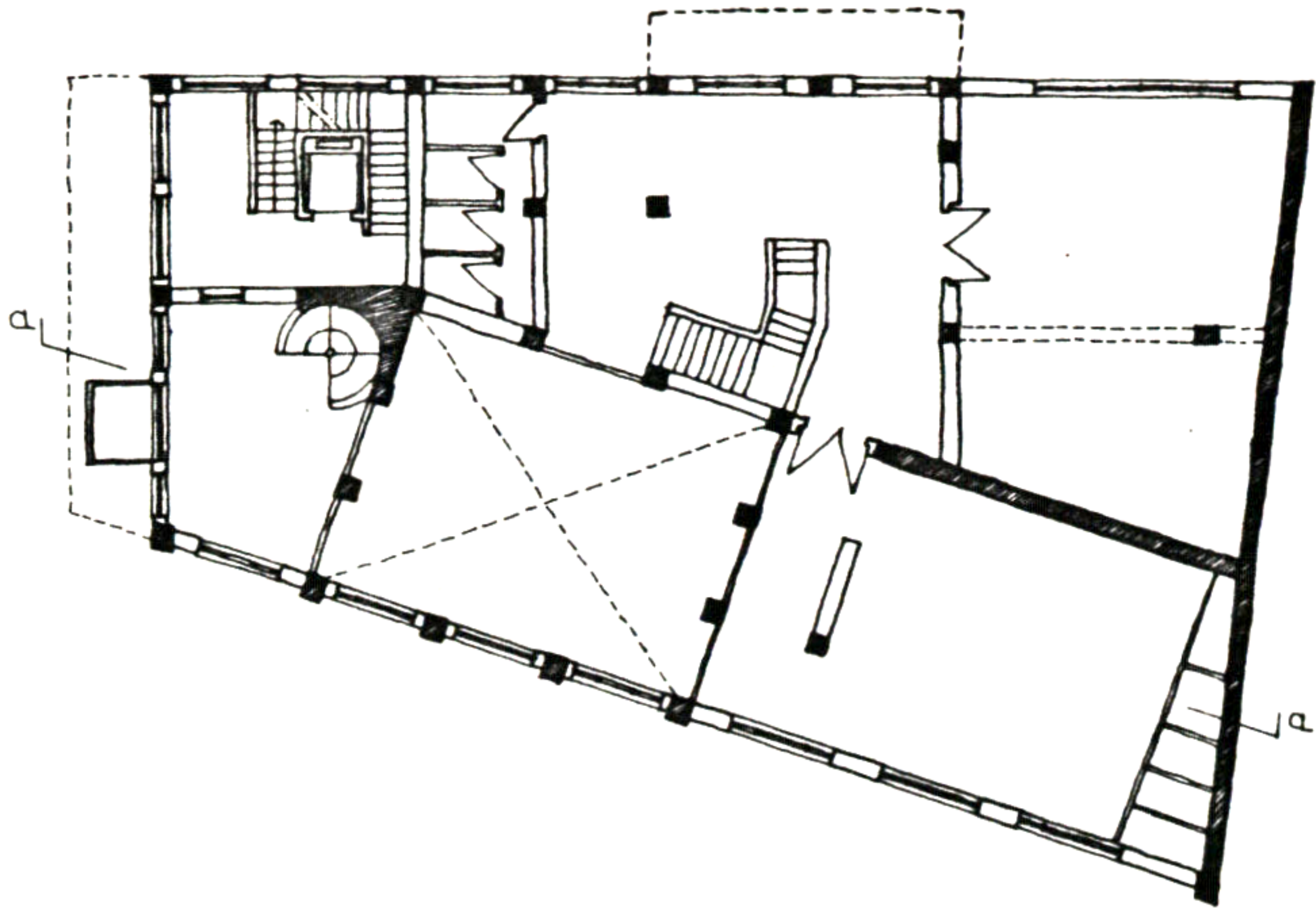


GROUND FLOOR PLAN

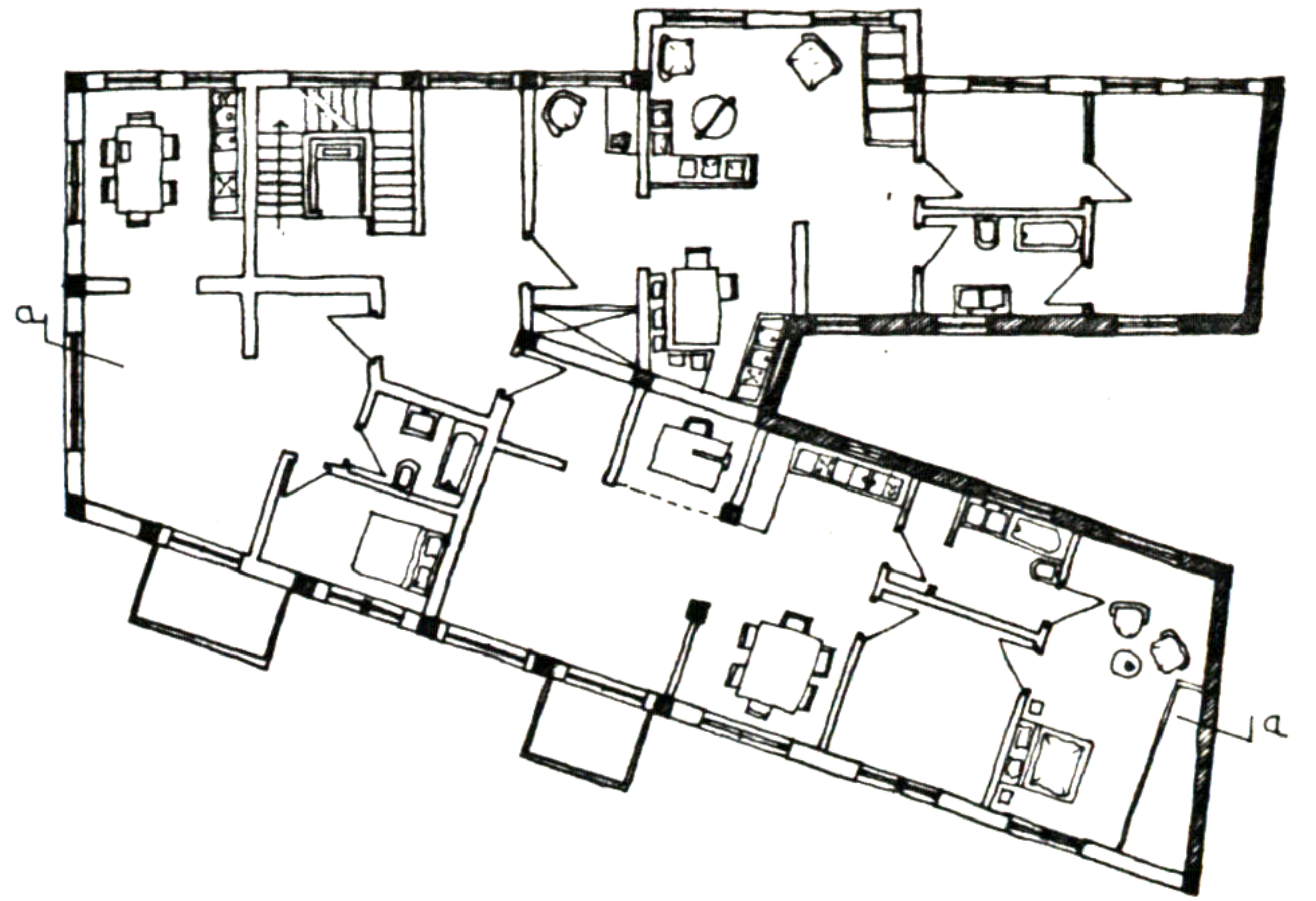


Martine Weissmann

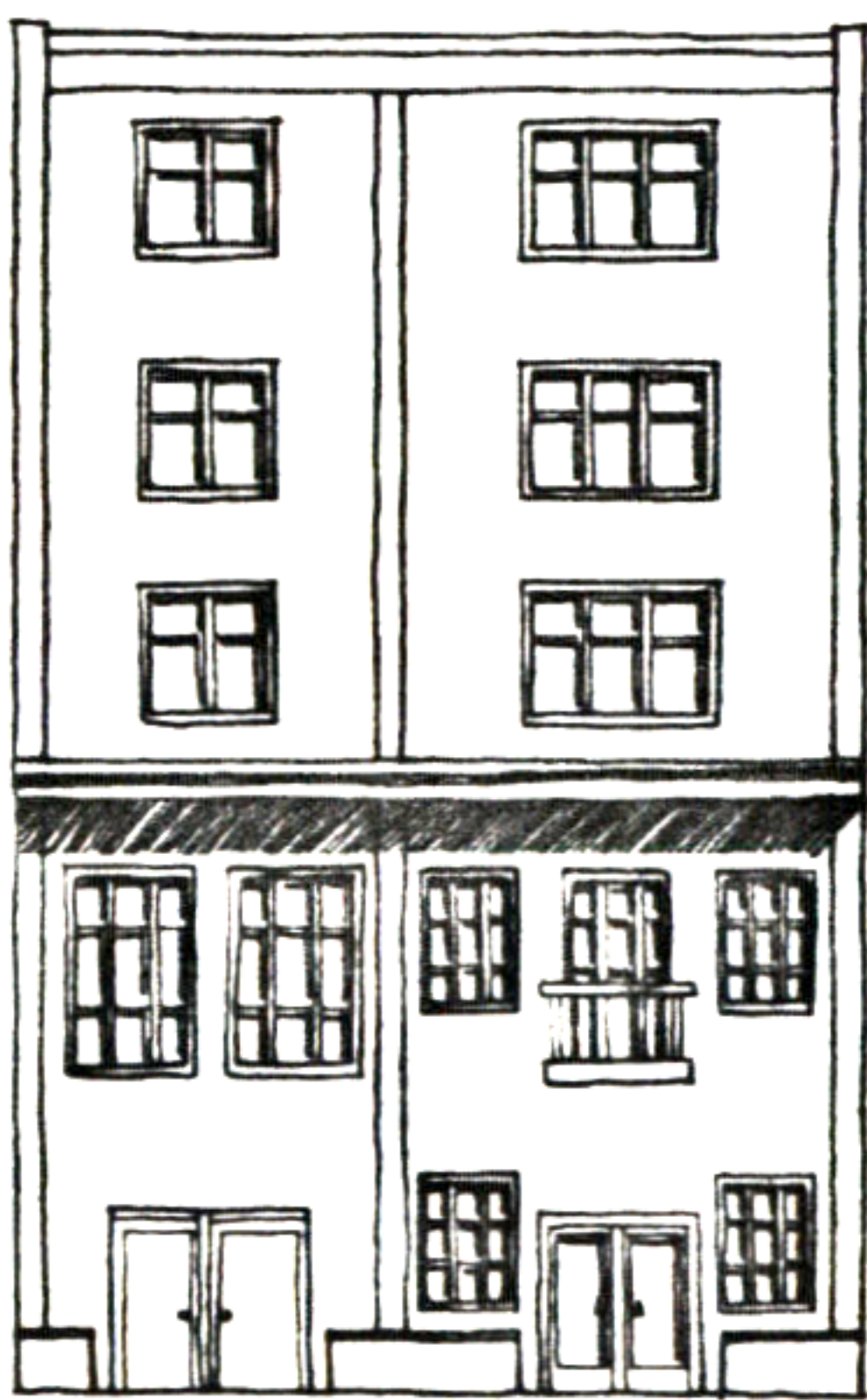
37. POLITICAL MEETING HALL & APTS.



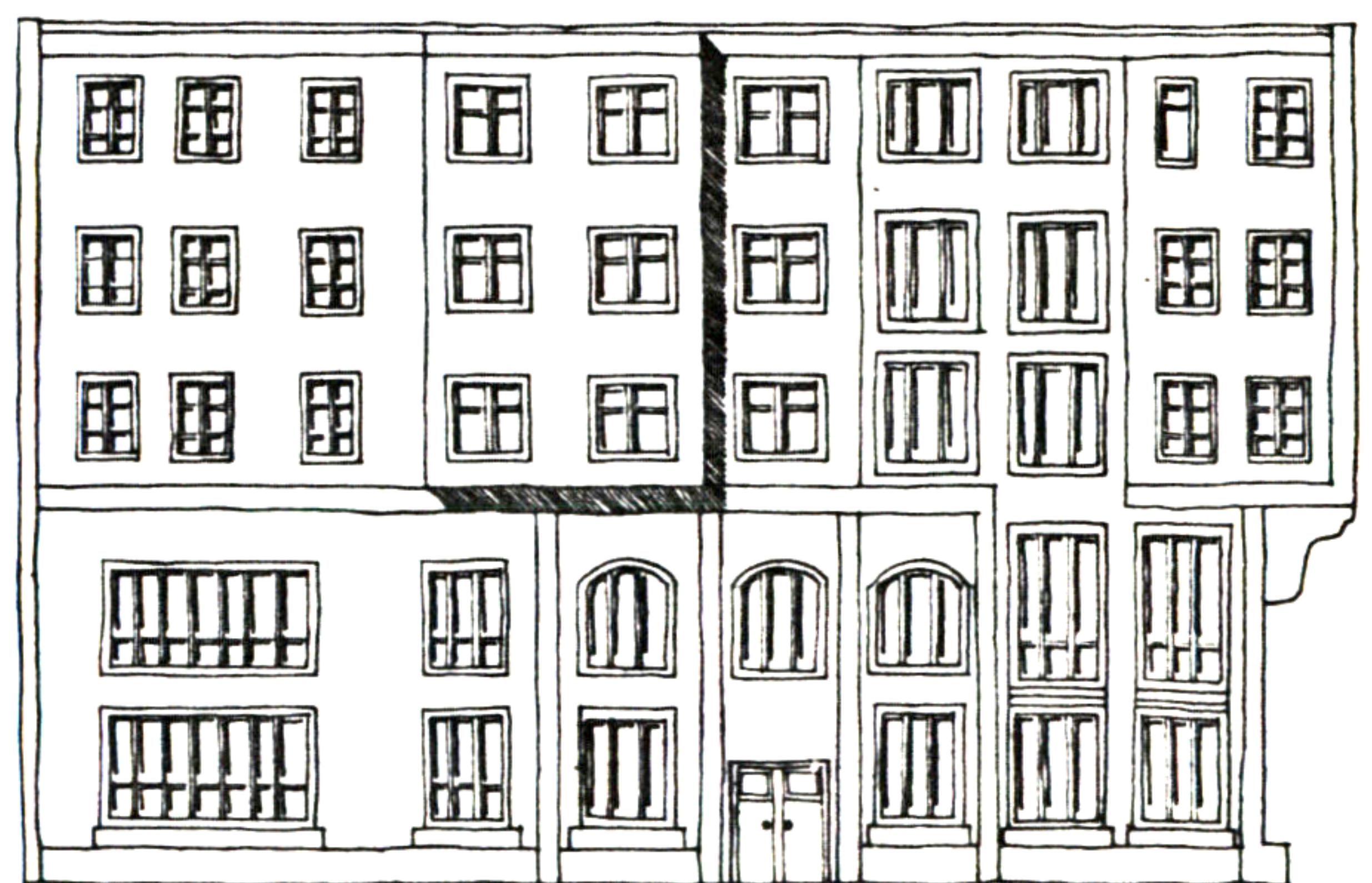
SECOND FLOOR PLAN



THIRD FLOOR PLAN



SOUTH WEST ELEVATION

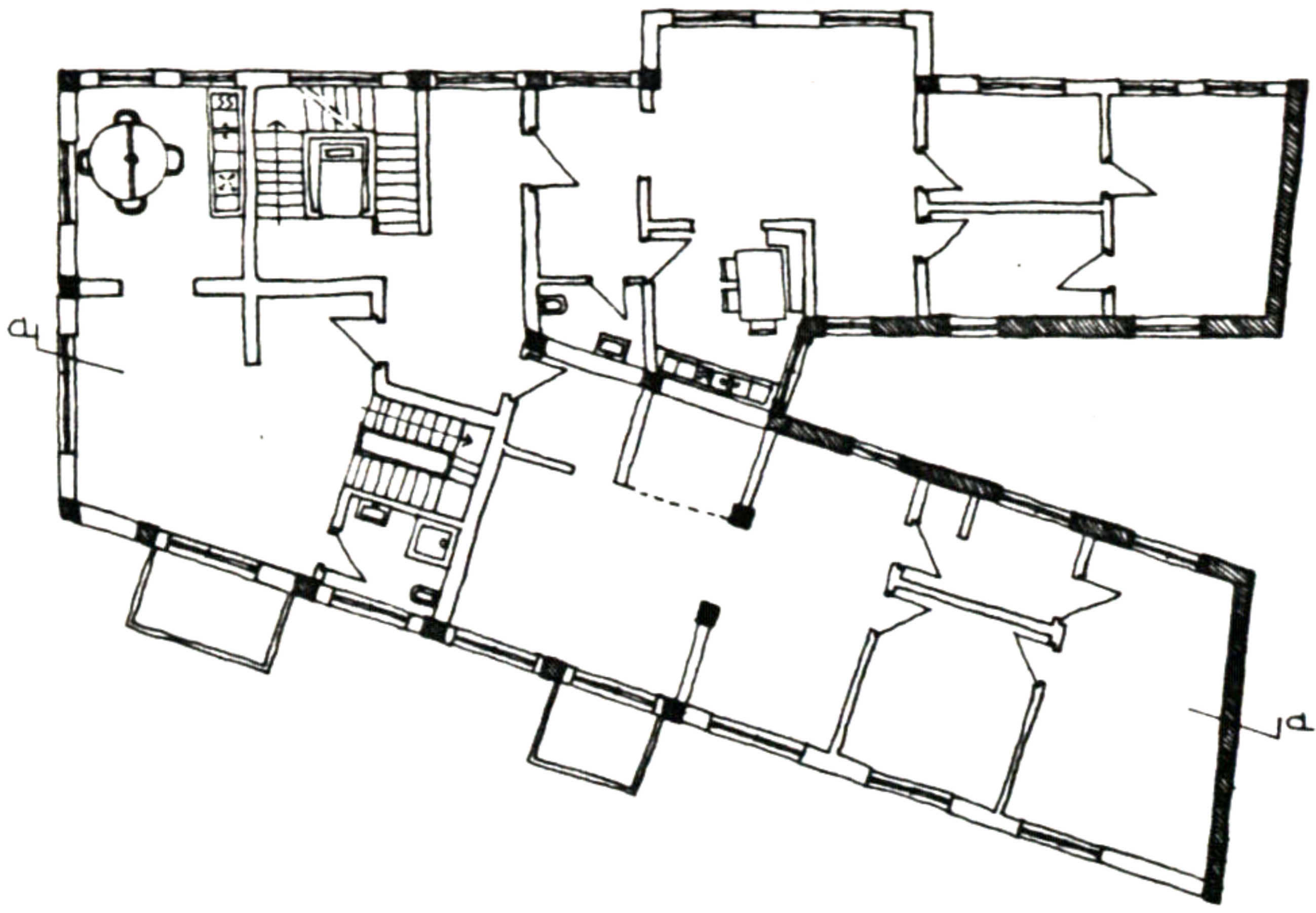


NORTH WEST ELEVATION

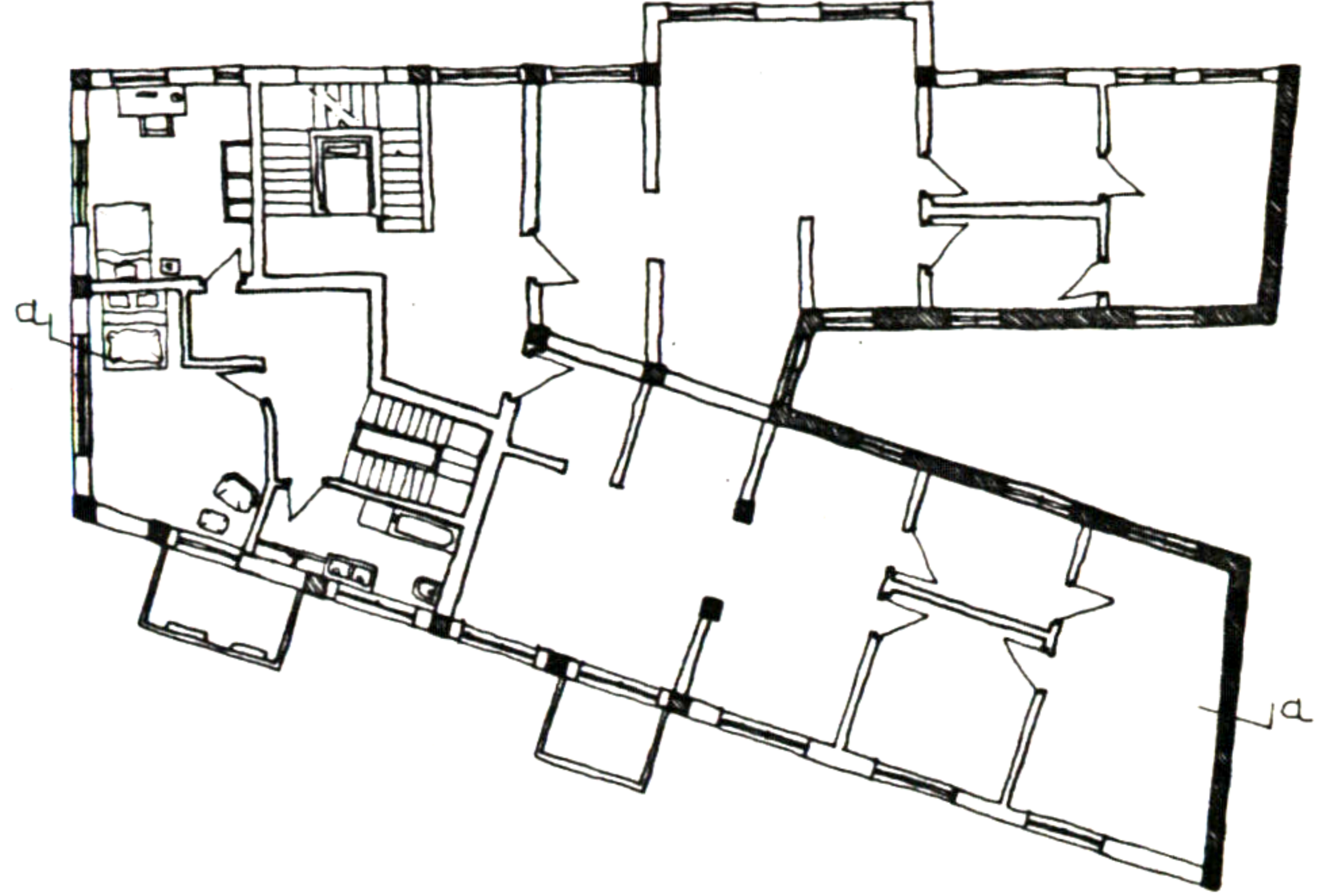


Martine Weissmann

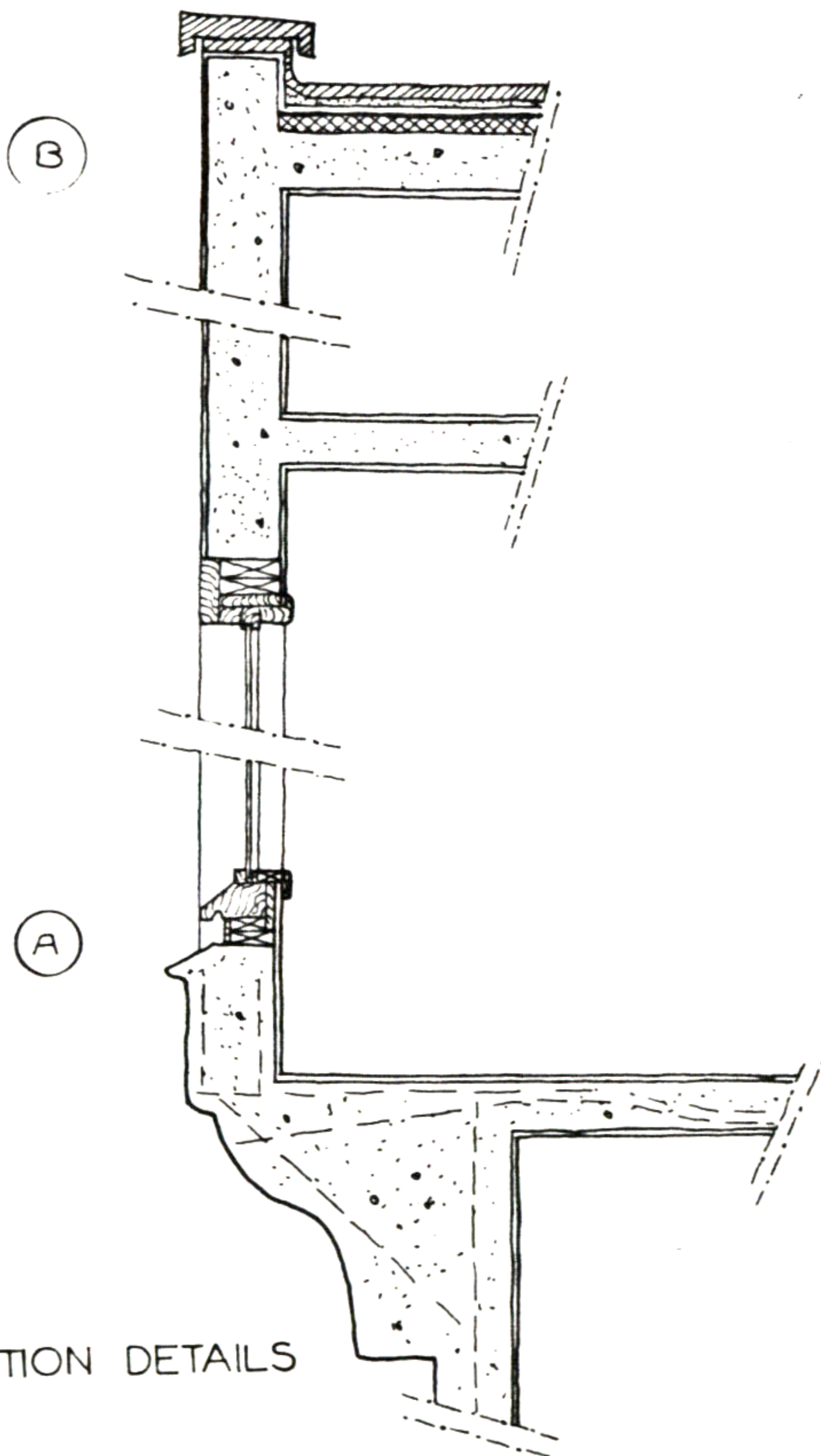
37. POLITICAL MEETING HALL & APTS.



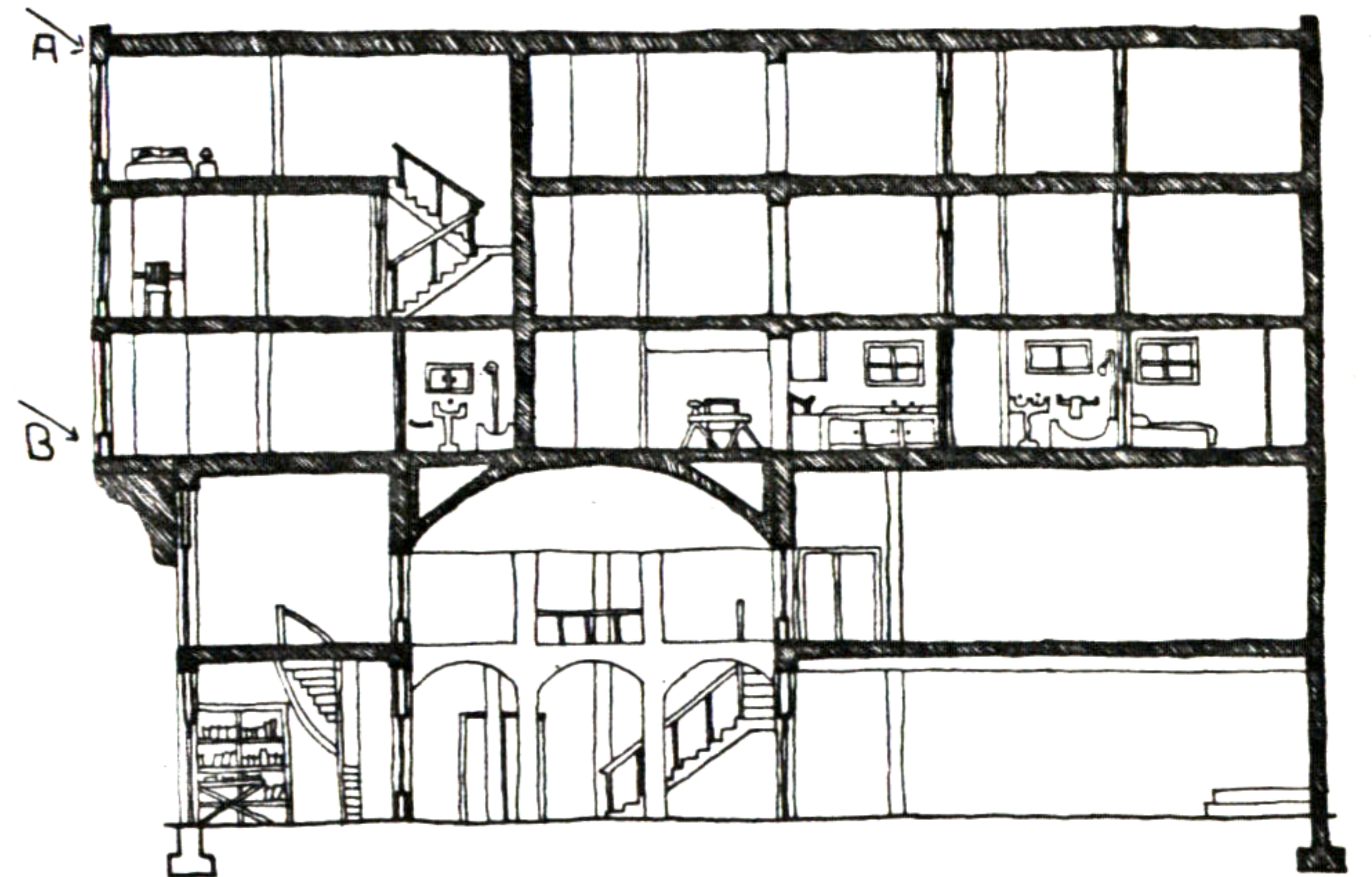
FOURTH FLOOR PLAN



FIFTH FLOOR PLAN



CONSTRUCTION DETAILS



SECTION a-a



Martine Weissmann