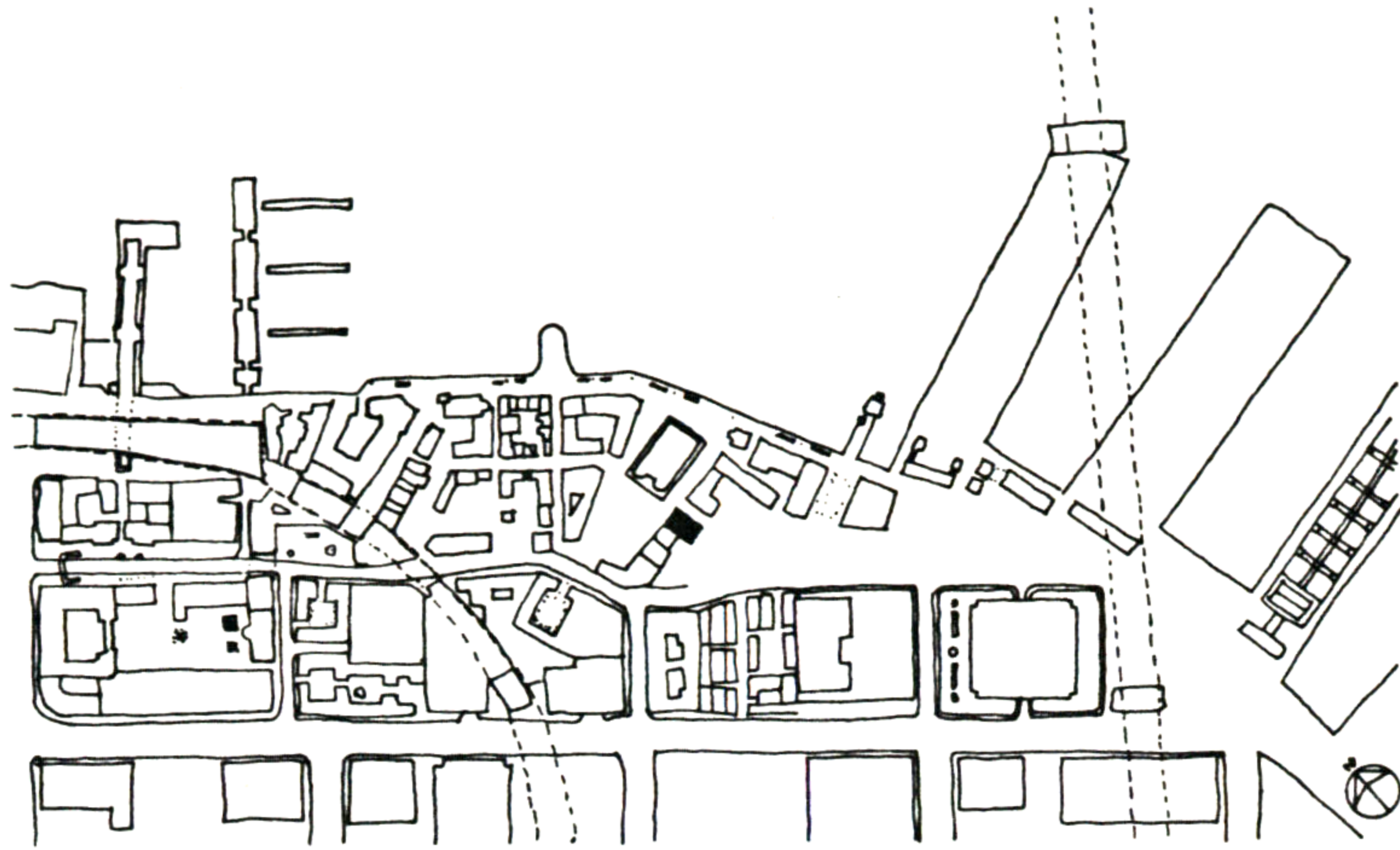


67. APARTMENT BUILDING



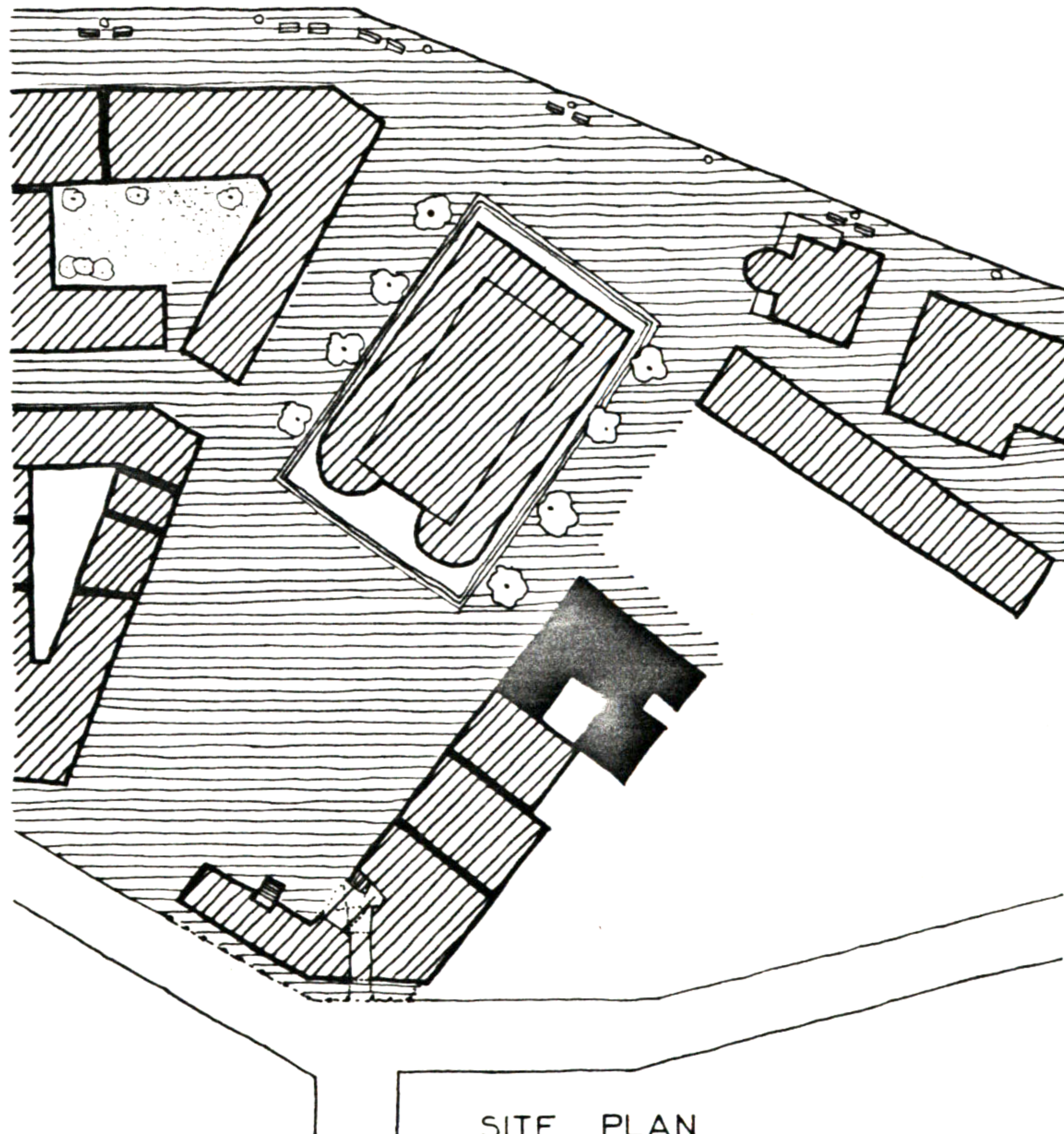
THIS BUILDING IS LOCATED ON THE NORTH SIDE OF THE MAIN SQUARE, JUST AT THE CORNER WHERE A PEDESTRIAN PATH REACHES THE SQUARE.

FACING THE SQUARE, ON THE GROUND FLOOR THERE ARE A JEWELRY SHOP AND A SMALL BOUTIQUE.

FACING THE PEDESTRIAN PATH, IN FRONT OF THE CHILDREN ART CENTER THERE IS A TOY SHOP.

AT THE BACK SIDE OF THE BUILDING IS A COMMON ROOM FOR THE PEOPLE WHO LIVE IN THE APARTMENTS UP STAIRS.

IT SEEMS TO ME VERY IMPORTANT TO PROVIDE APARTMENTS IN THIS BUILDING SO THAT THE LIFE OF THE SQUARE WILL BE NOT ONLY ENHANCED TOWARDS A COMMERCIAL OR TOURISTIC DIRECTION, BUT IN THE SENSE OF EVERYDAY LIFE.



SITE PLAN



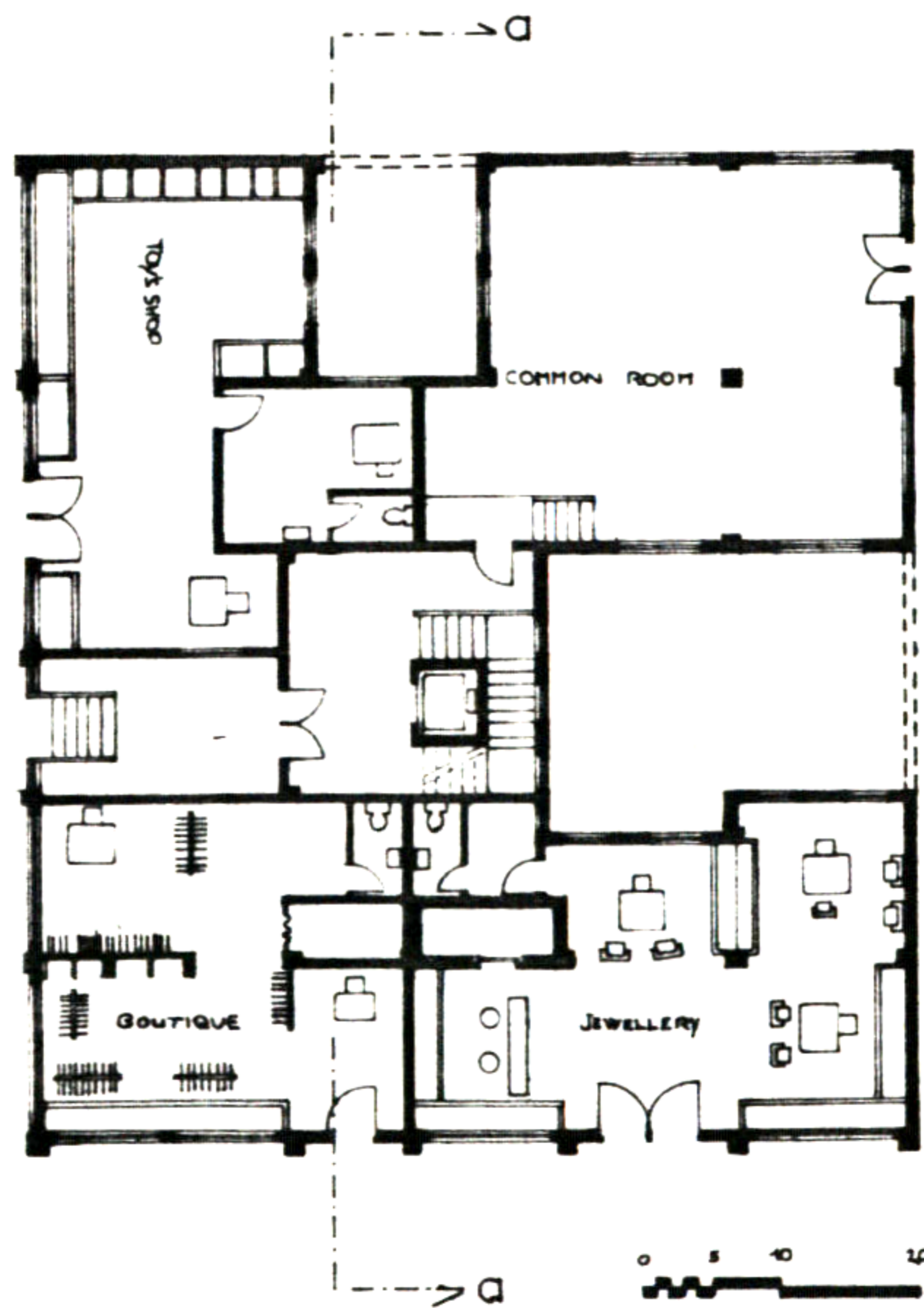
Martine Weissmann

67. APARTMENT BUILDING



NORTH ELEVATION ON THE SQUARE

GROUND FLOOR PLAN



Martine Weissmann

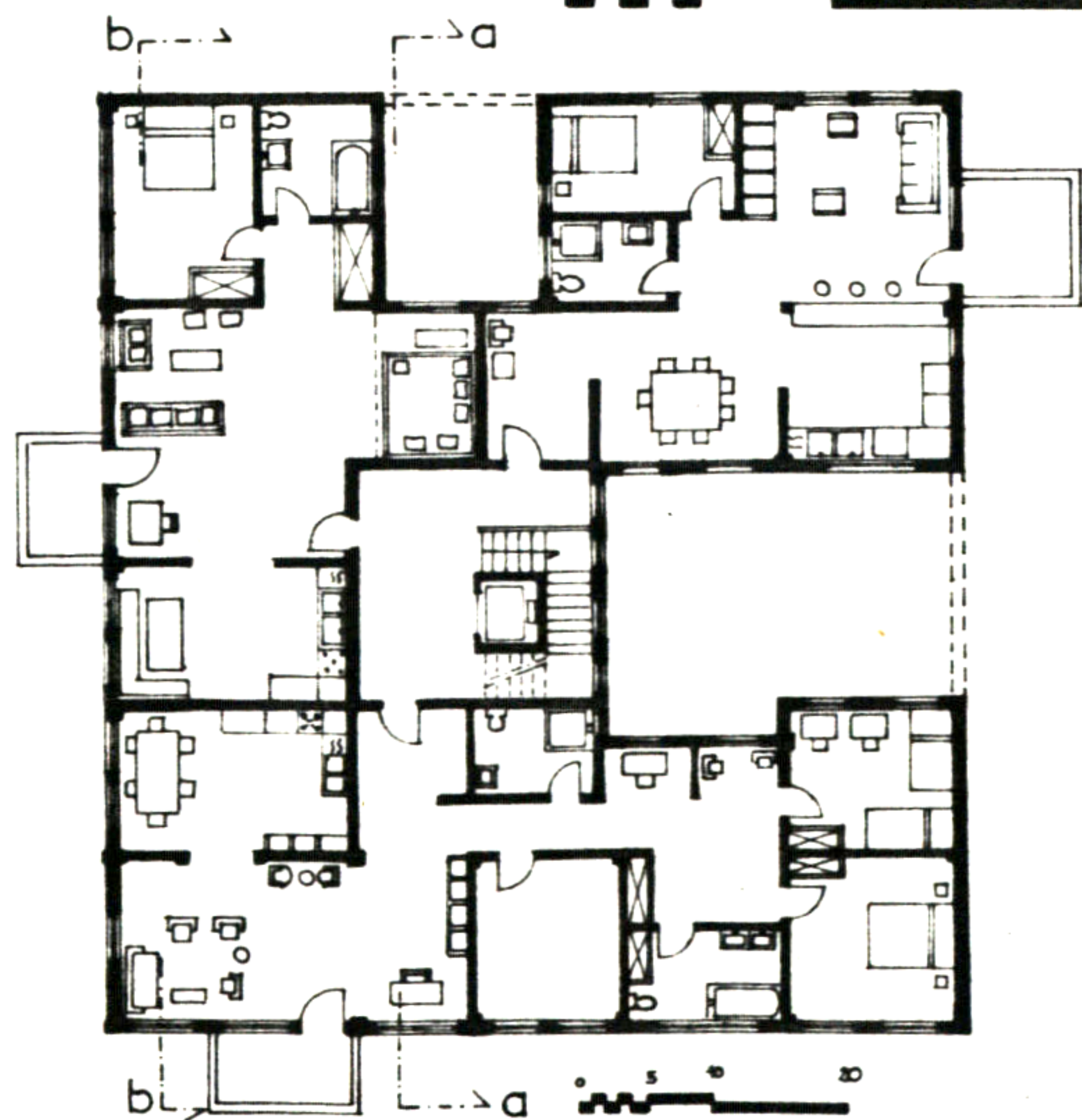
67. APARTMENT BUILDING



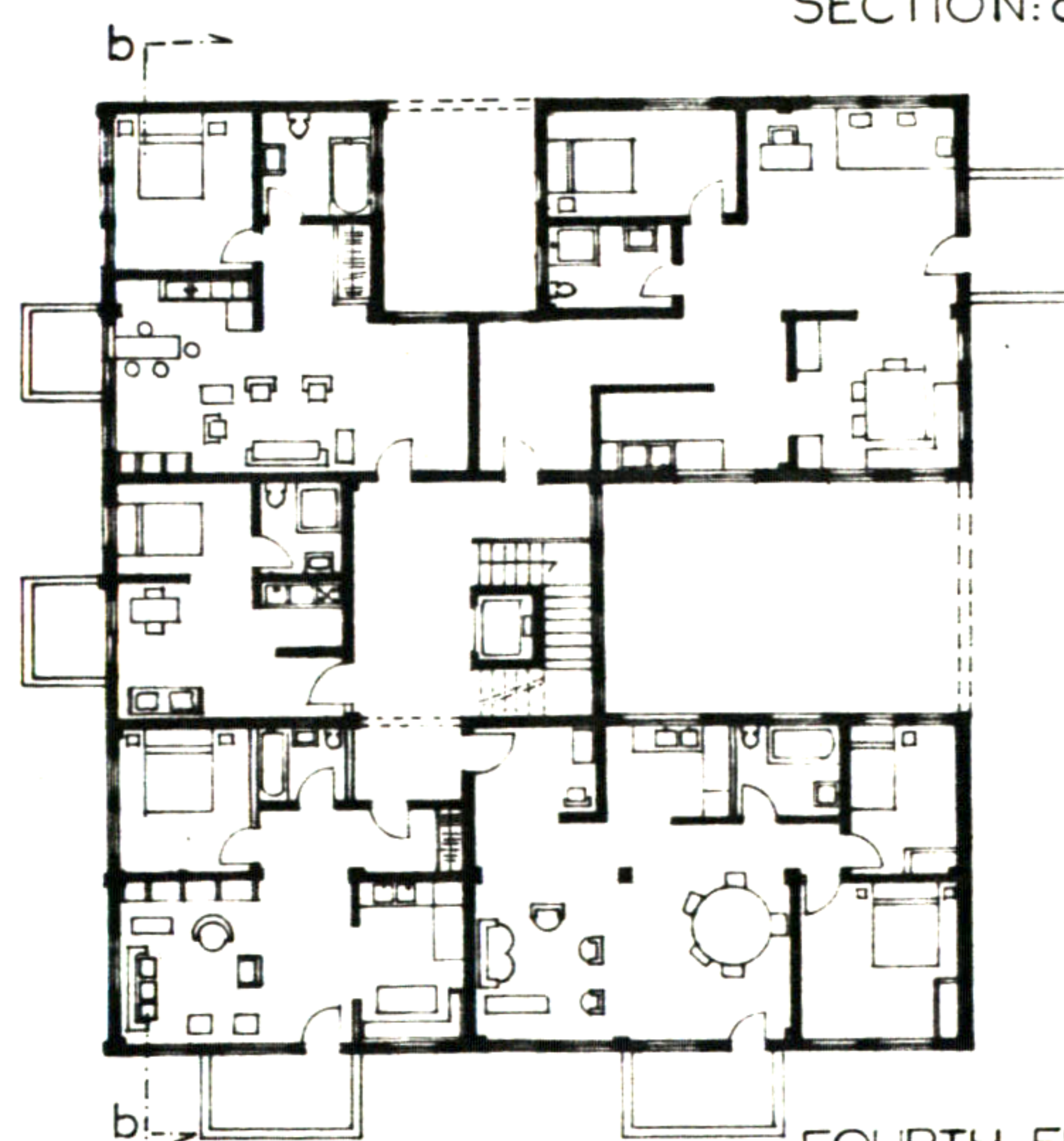
EAST ELEVATION



SECTION: a.a - b.b



SECOND & THIRD FLOOR PLAN



FOURTH FLOOR PLAN

Martine Weissmann