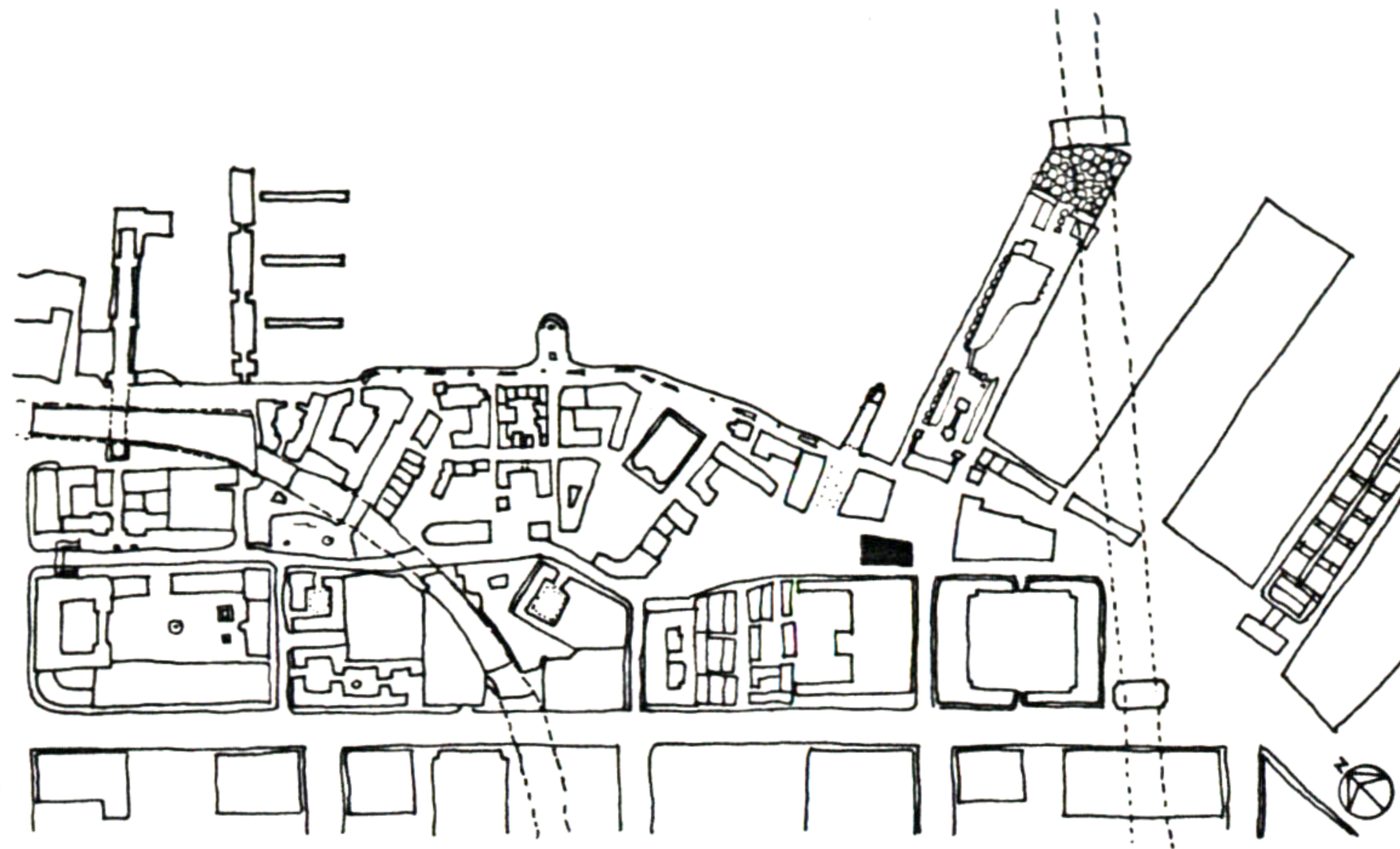


69.OFFICE BUILDING

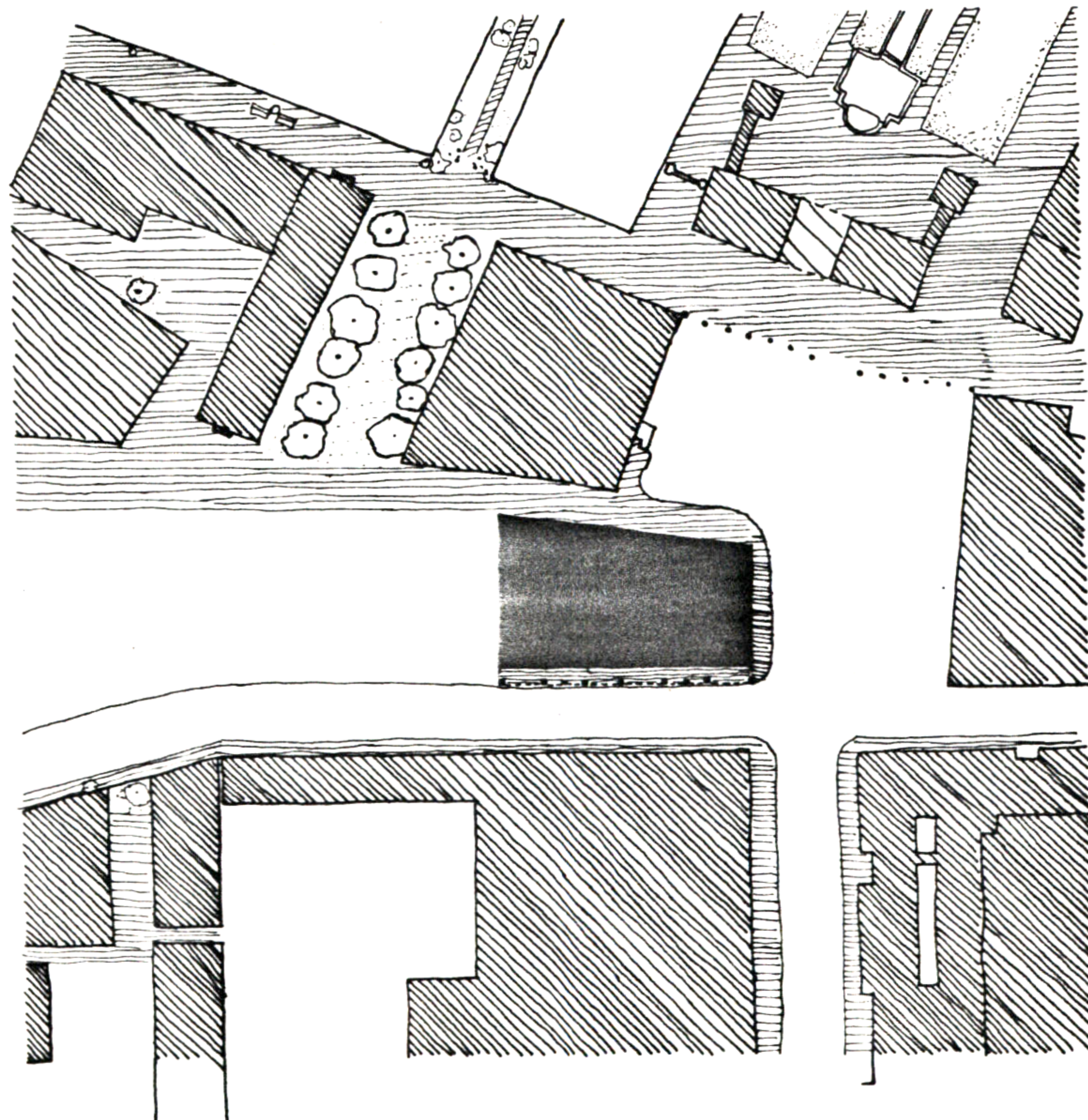


I PROPOSE THIS OFFICE BUILDING BETWEEN THE FURNITURE FACTORY AND THE "HILL'S BROTHERS".

THE MAIN ENTRANCE IS ON THE PEDESTRIAN PATH. IN ORDER TO PROVIDE SECONDARY ENTRANCES FROM THE OPPOSITE SIDE OF THE BUILDING THAT FACES THE STREET, A COVERED PASSAGE IS CREATED BY EXTENDING THE FOUR UPPER FLOORS 8 FEET, BEYOND THE GROUND FLOOR.

THE SECOND AND THIRD FLOOR BELONG TO ONE COMPANY, THE TWO LAST FLOORS ARE SHARED BY TWO DIFFERENT COMPANIES. THEY ALL USED THE COMMON FACILITIES ON THE GROUND FLOOR.

THE BUILDING IS LOCATED AT THE EDGE OF THE RESIDENTIAL AREA, AT A TRANSITORY POINT TO THE INDUSTRIAL AREA WHICH HAS BEEN UNDER DEVELOPMENT.



SITE PLAN

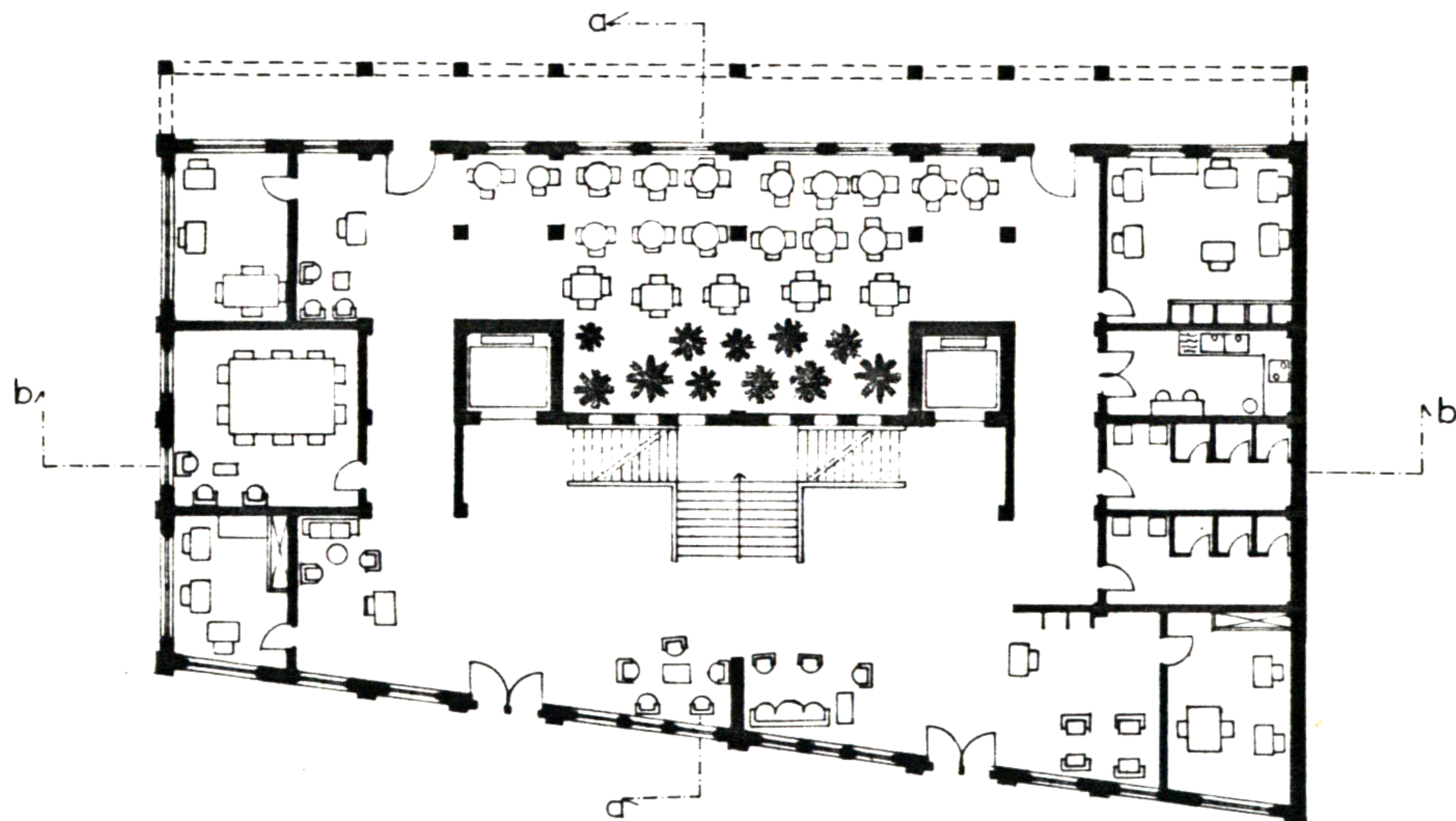


Martine Weissmann

69. OFFICE BUILDING



NORTH EAST ELEVATION

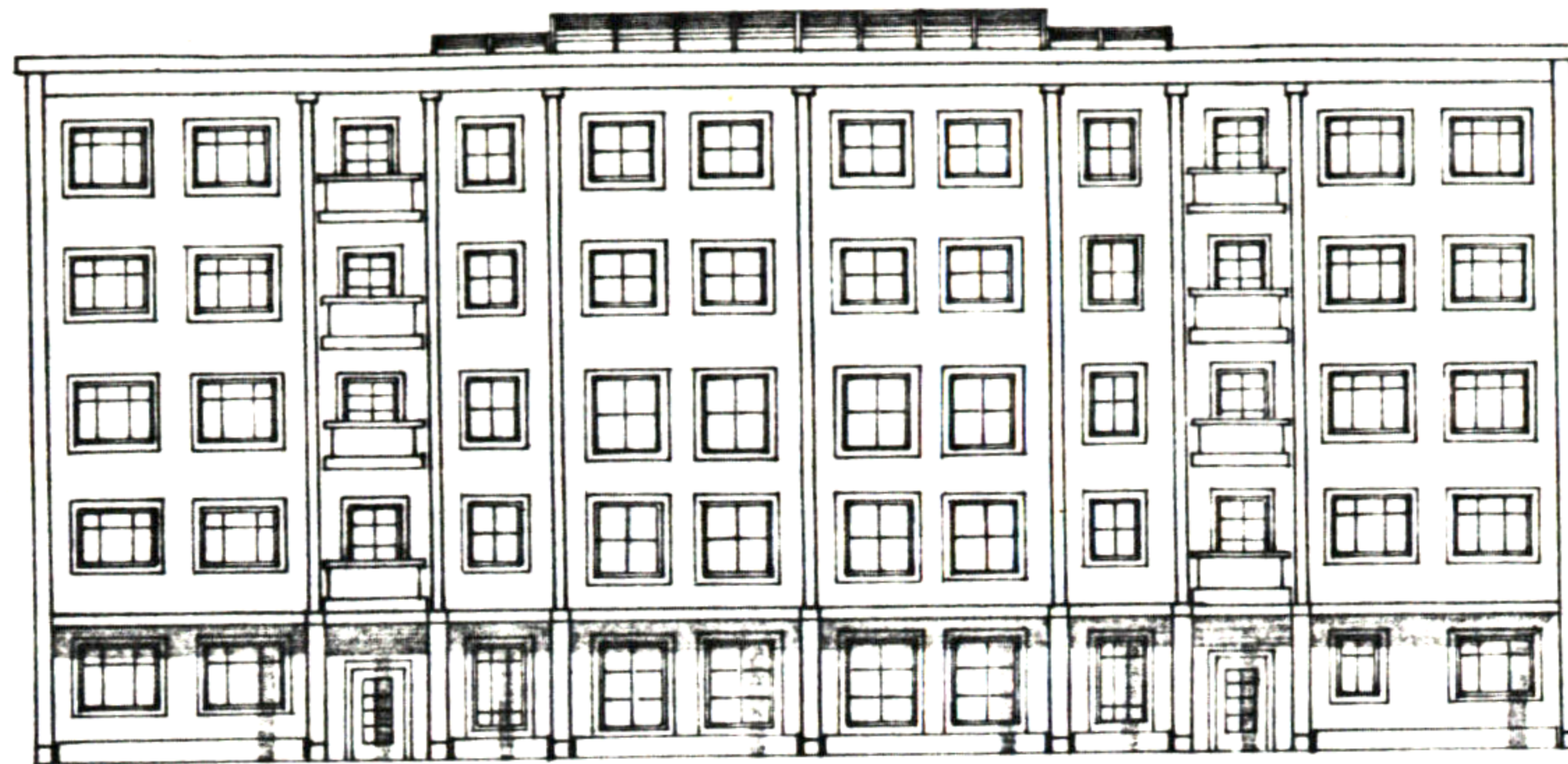


GROUND FLOOR PLAN

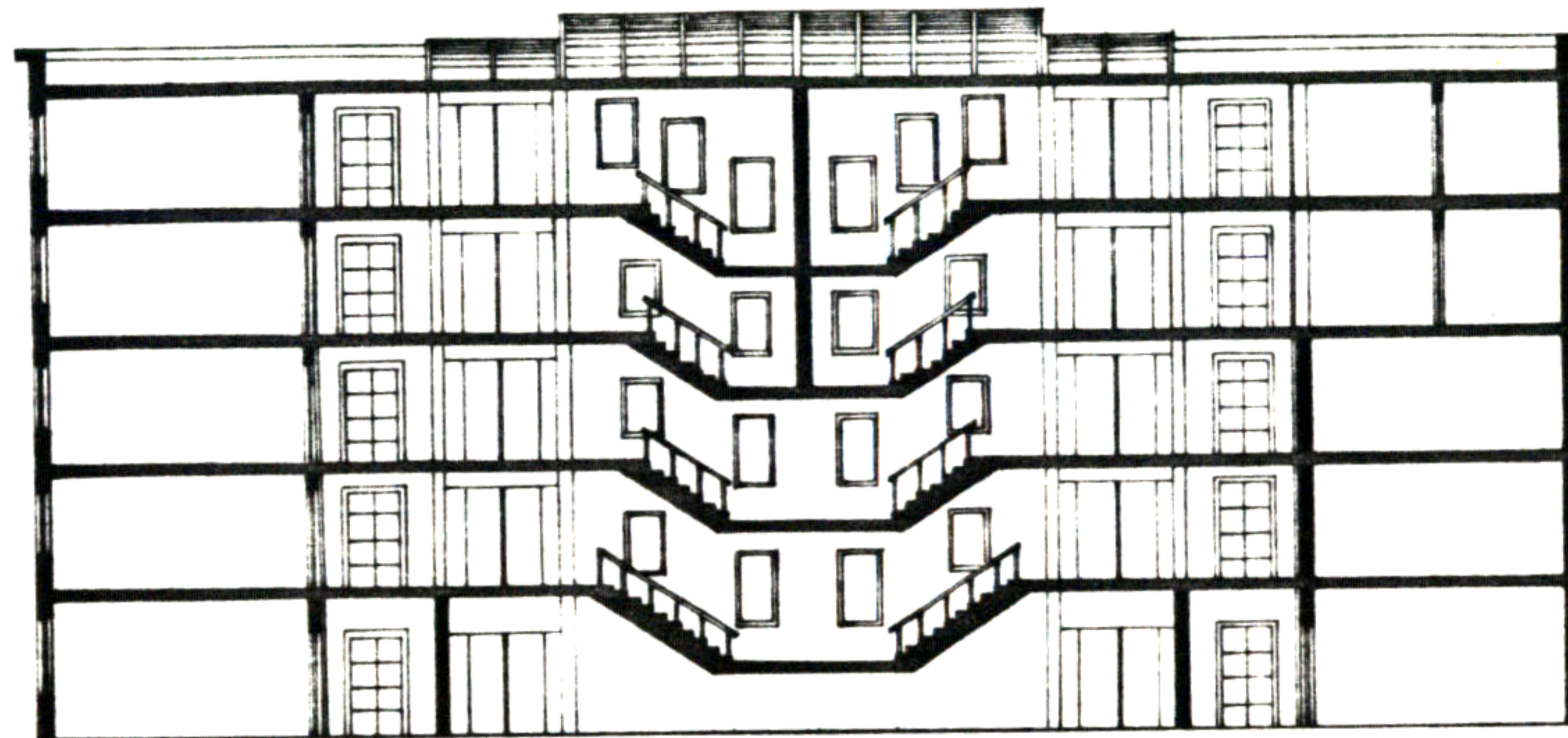


Martine Weissmann

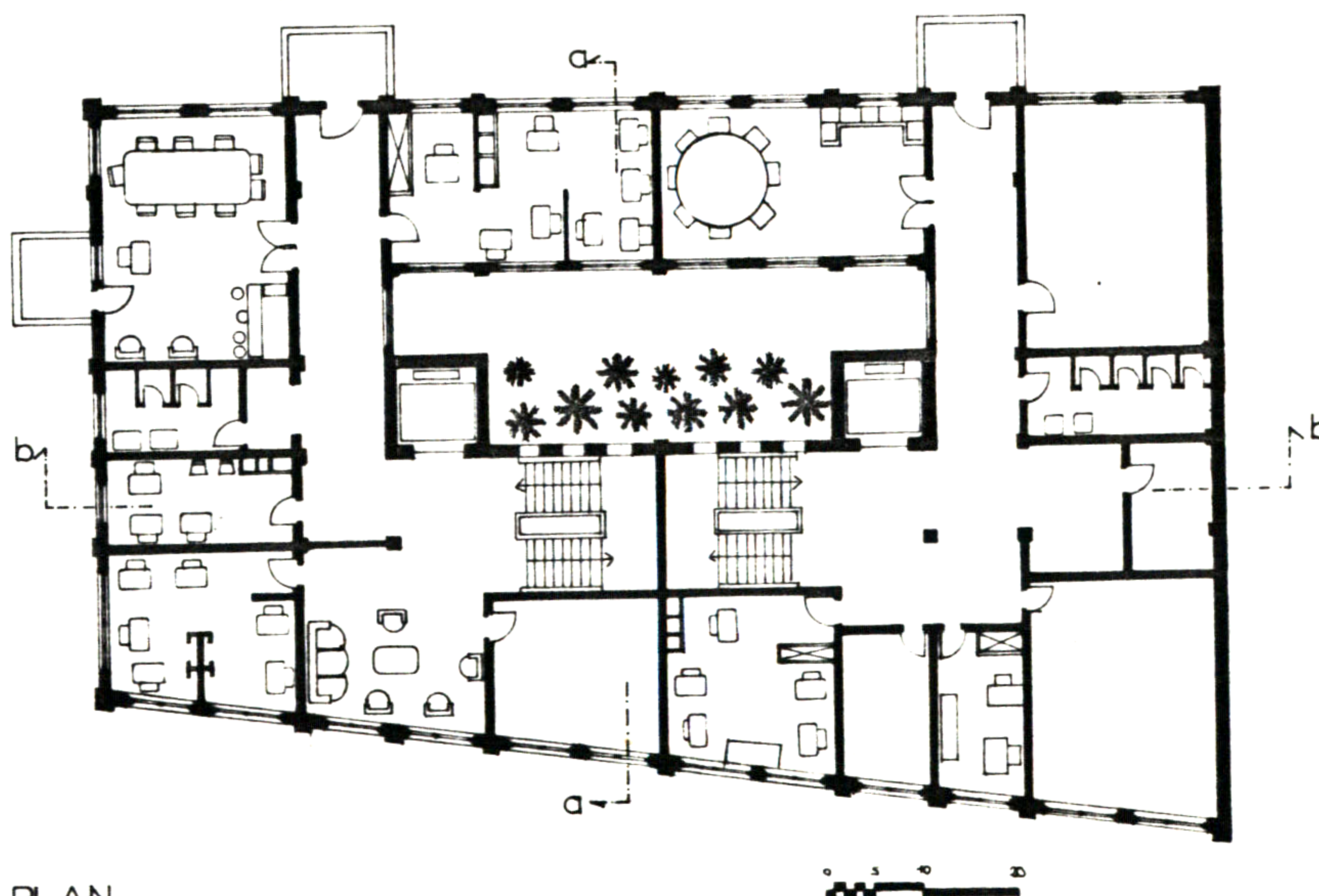
69. OFFICE BUILDING



SOUTH WEST ELEVATION



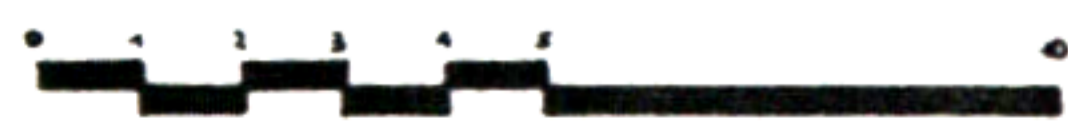
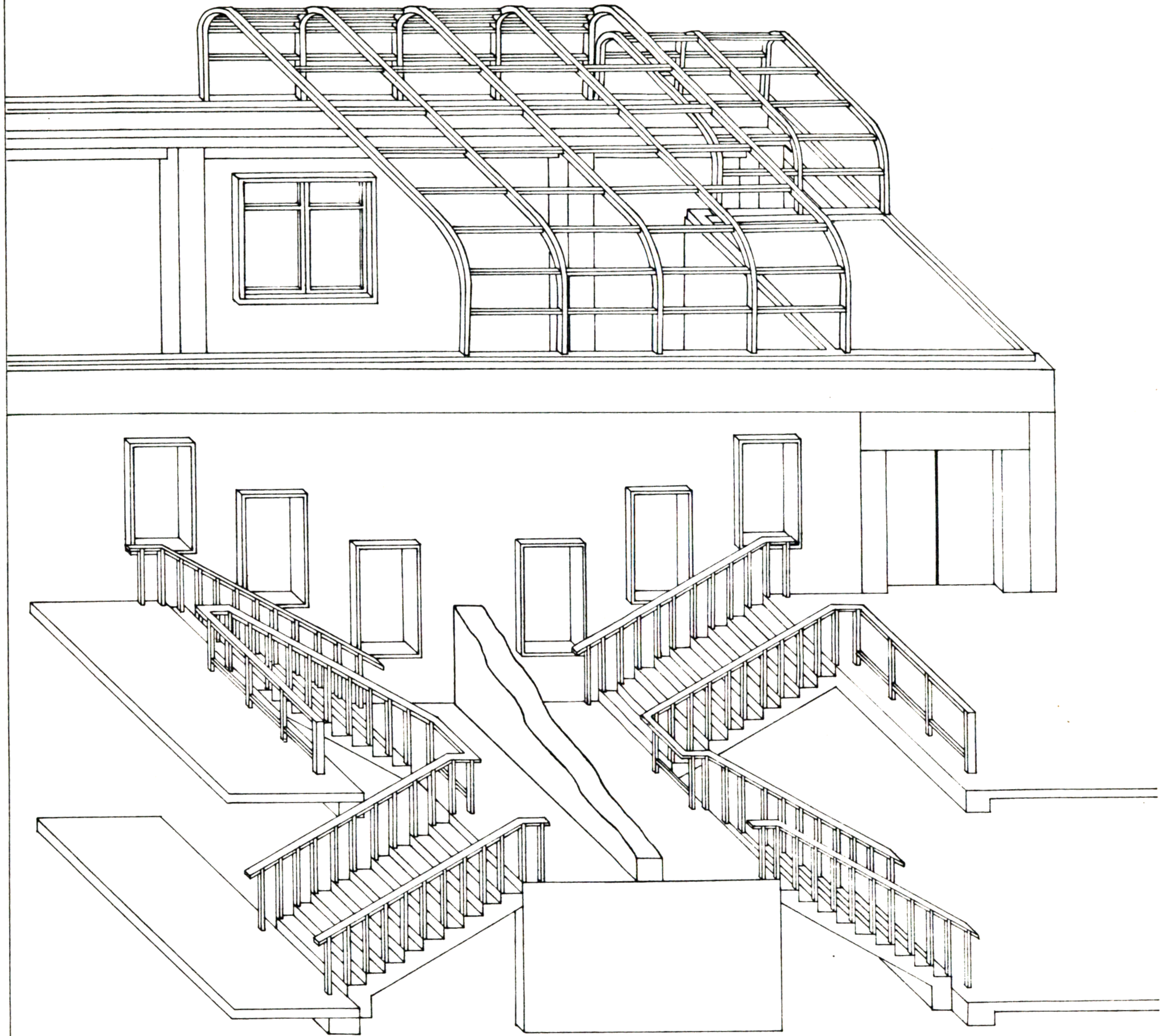
SECTION: b.b.



FOURTH FLOOR PLAN

Martine Weissmann

69.OFFICE BUILDING



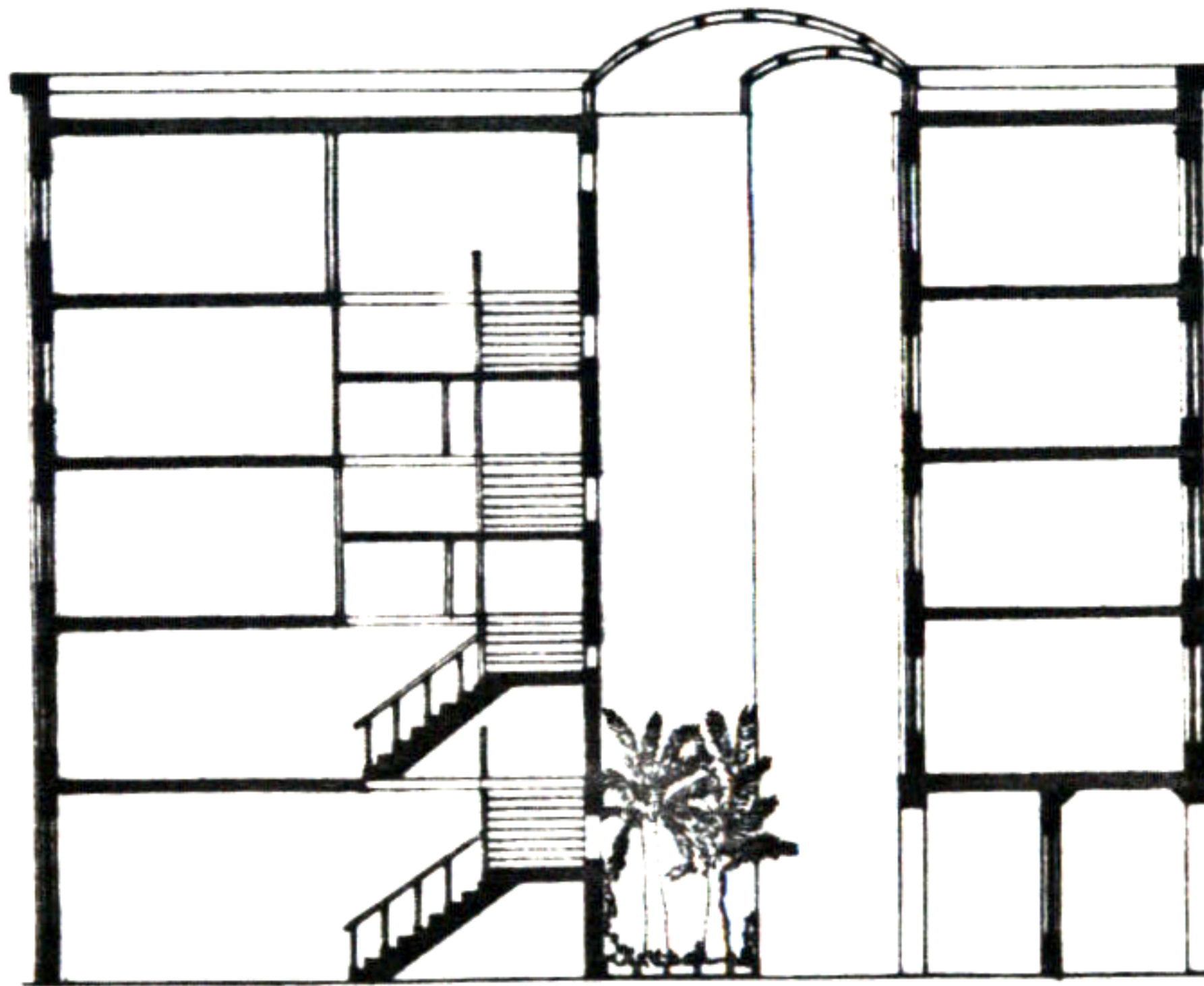
AXONOMETRIC OF THE SKYLIGHT

Martine Weissmann

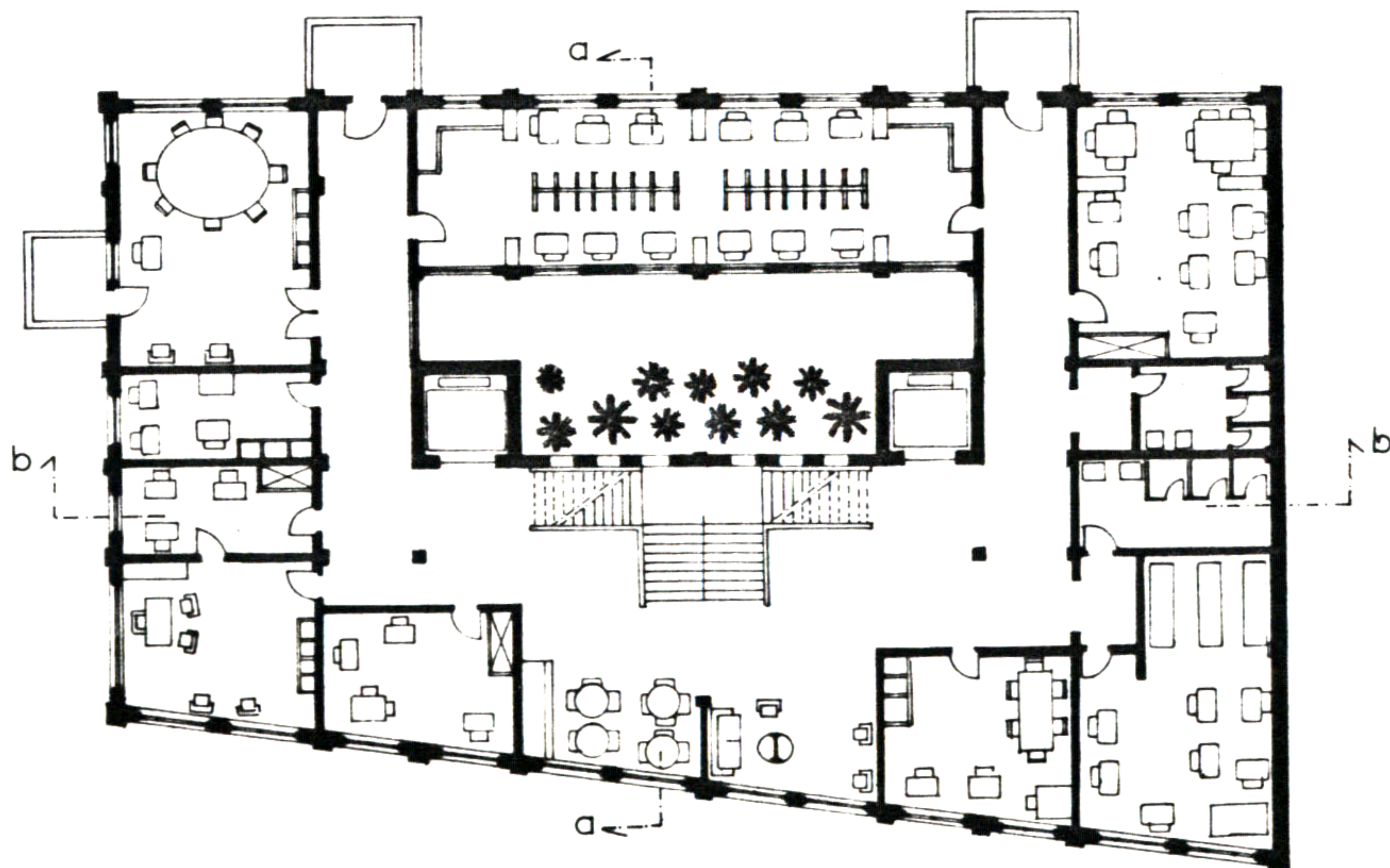
69. OFFICE BUILDING



SOUTH EAST ELEVATION



SECTION: a.a.



SECOND FLOOR PLAN



Martine Weissmann