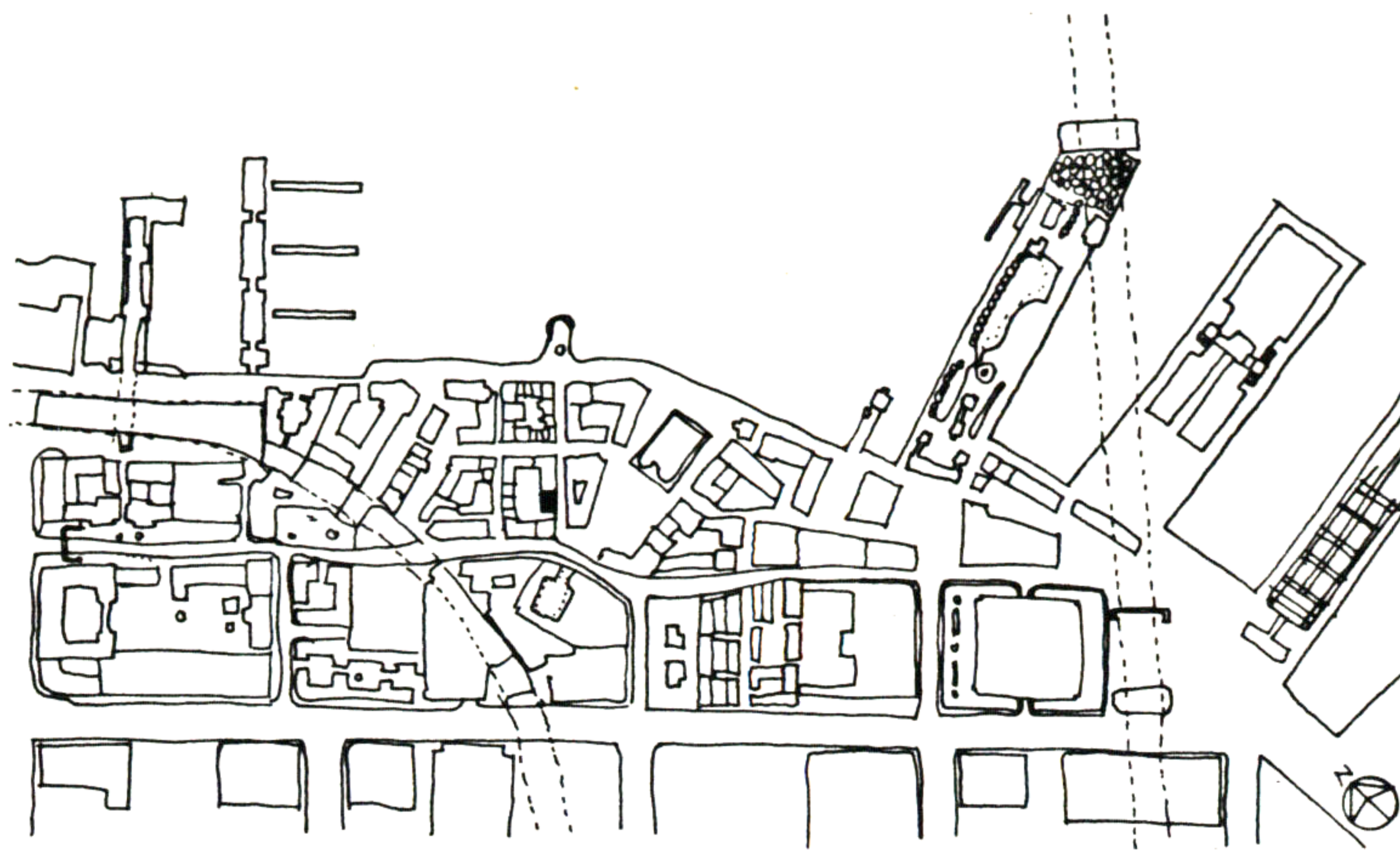


82. HOUSE & SAUNA

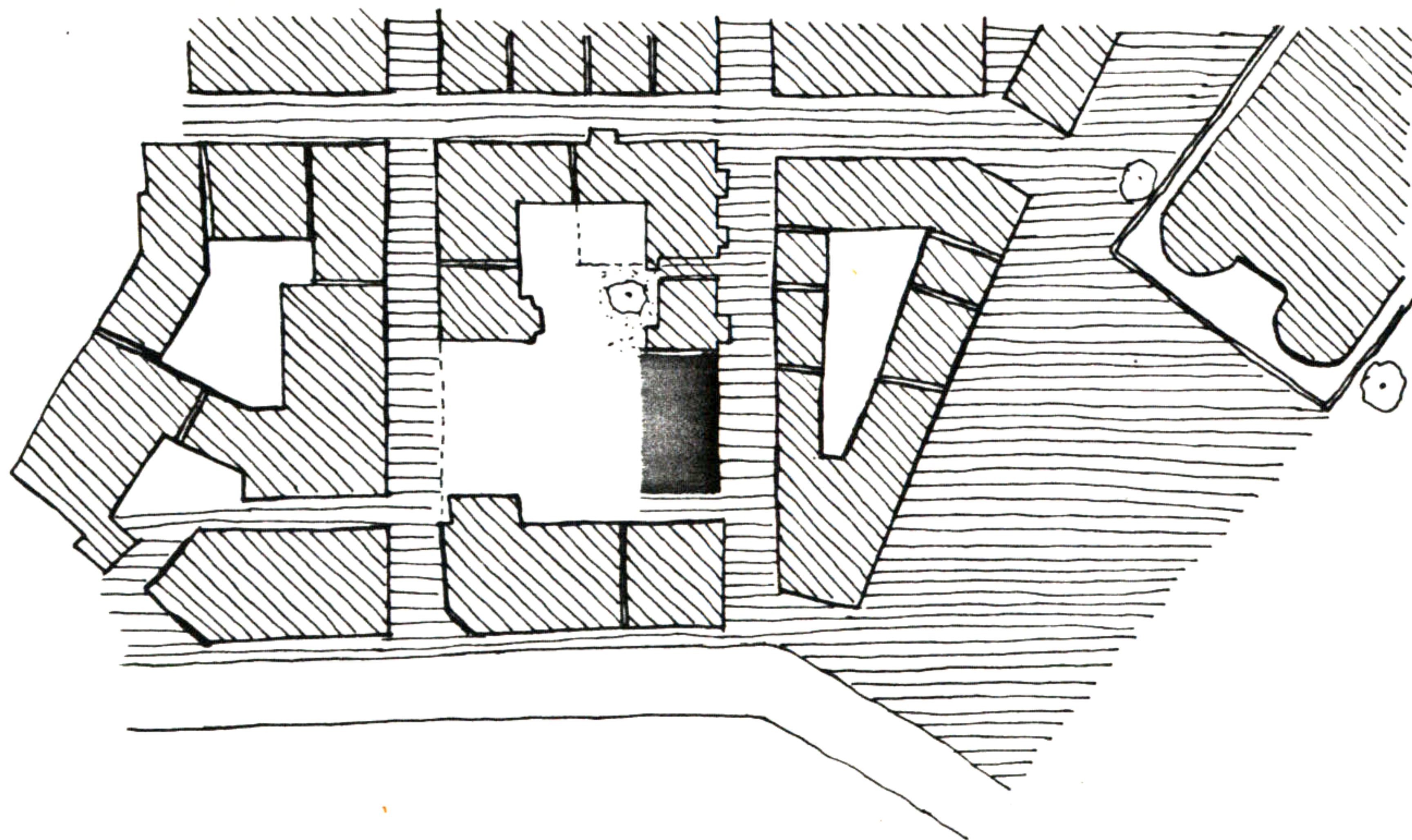


FACING THE SHOPPING STREET, JUST BEHIND THE POST OFFICE, I PROPOSE A HOUSE IN ORDER TO COMPLETE THE RESIDENTIAL AREA.

BETWEEN THE HOUSE AND THE POST OFFICE THERE IS A SMALL PASS WHICH LEADS TO THE INTERIOR COURTYARD.

ON THE GROUND FLOOR THERE IS A SAUNA. THIS SAUNA WHICH FACES THE MARTIAL ART BELONGS TO THE SAME PERSON.

ON THE SECOND FLOOR THERE ARE TWO APARTMENTS. EACH ONE OF THEM ARE TWO STORIES HIGH.

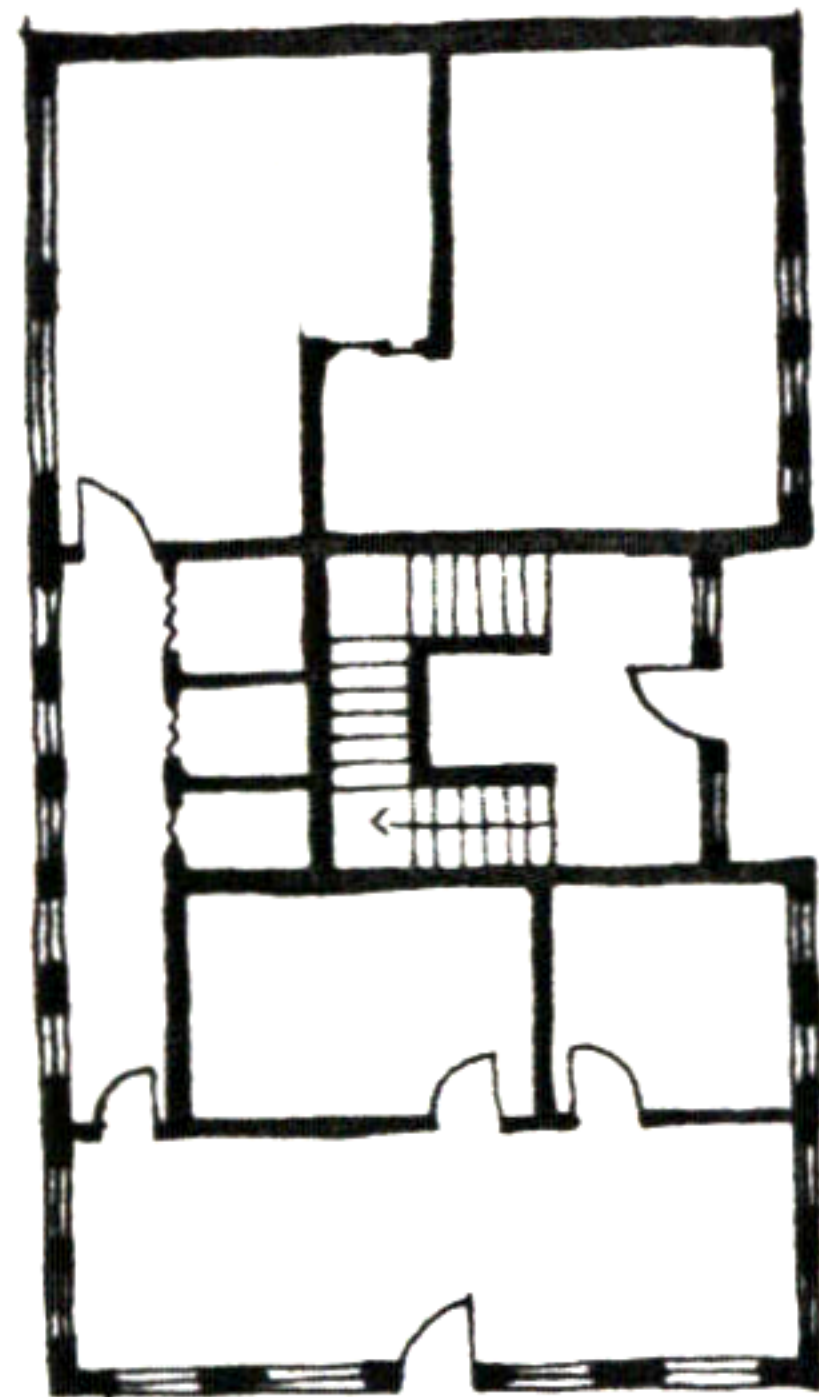


Martine Weissmann

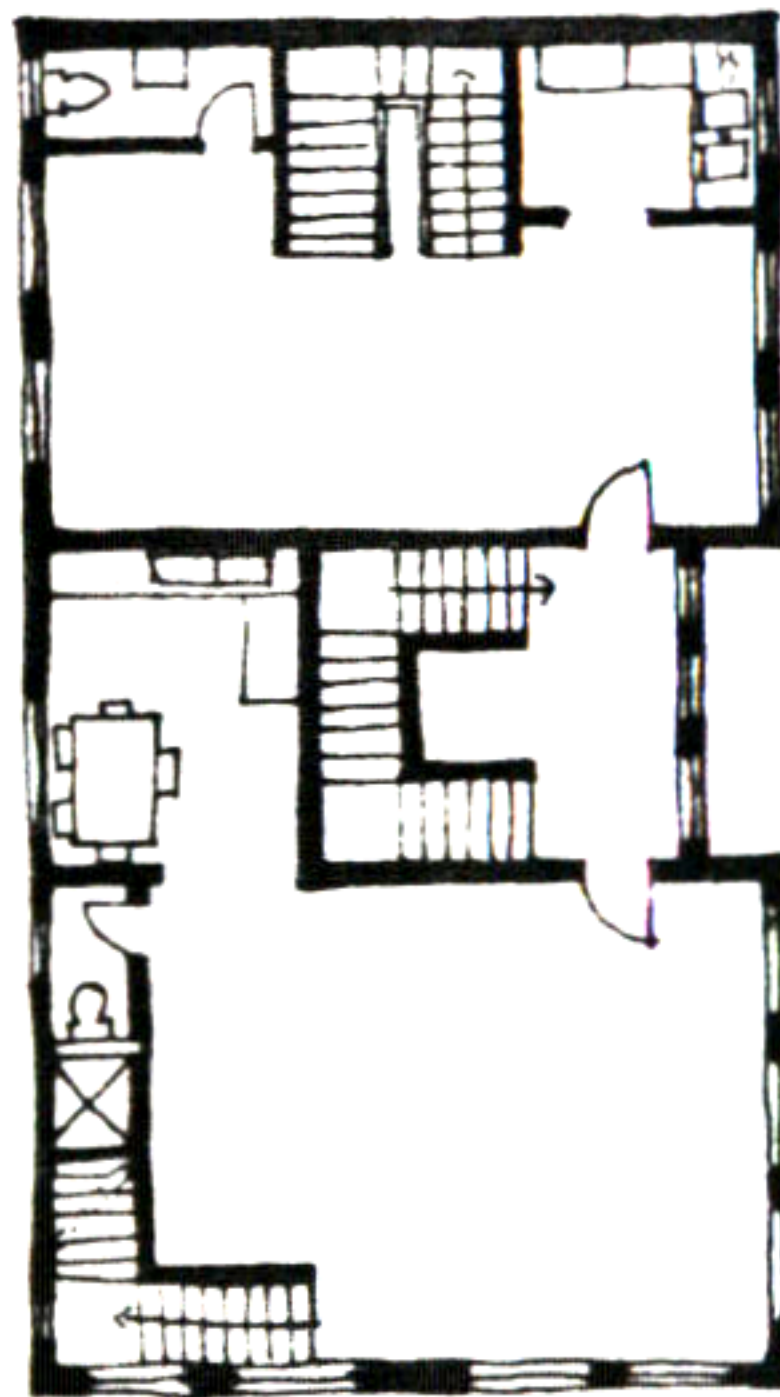
82. HOUSE & SAUNA



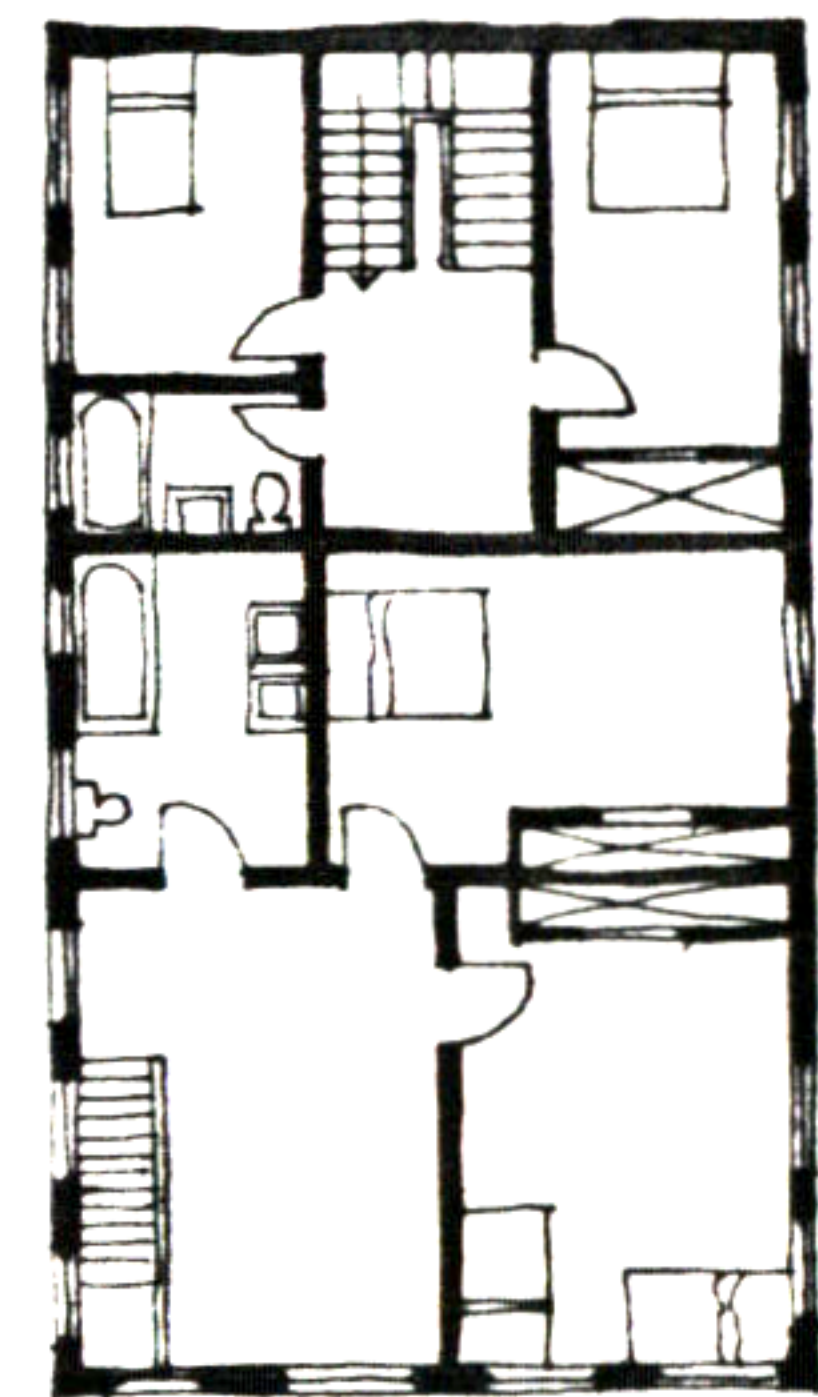
SOUTH EAST ELEVATION



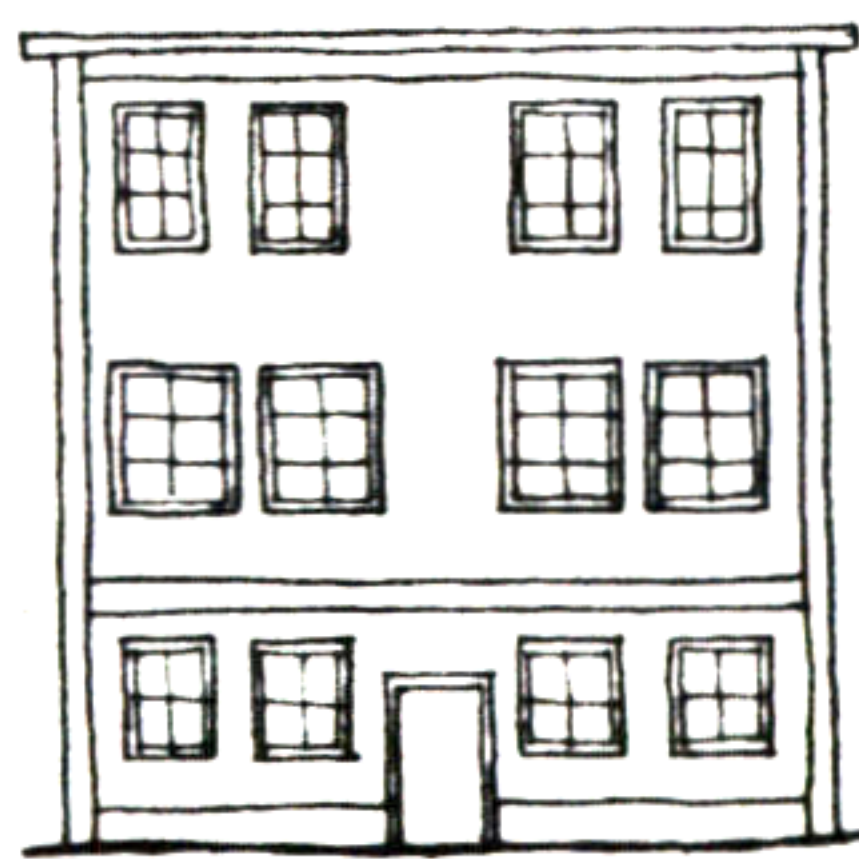
GROUND FLOOR PLAN



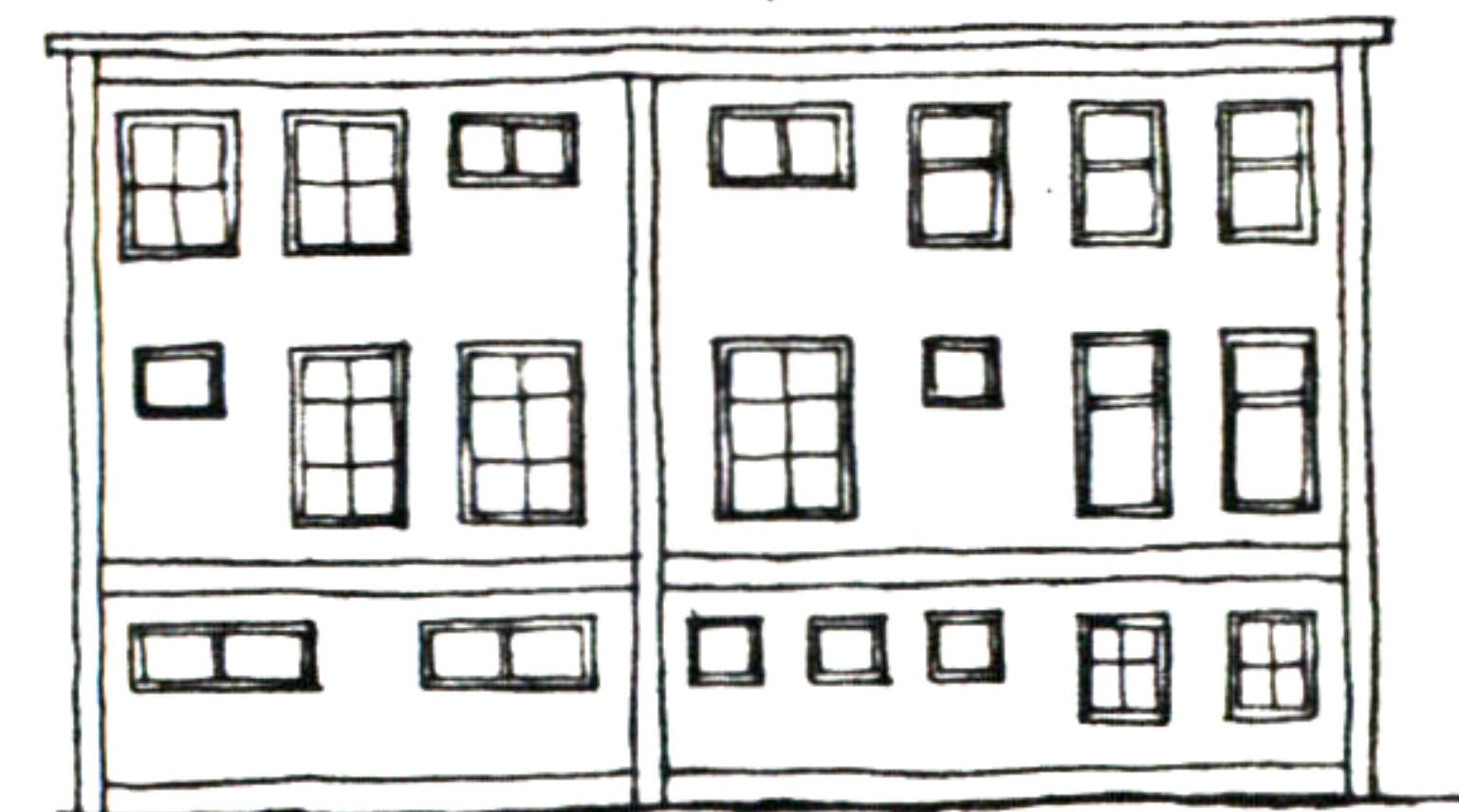
SECOND FLOOR PLAN



THIRD FLOOR PLAN



SOUTH WEST ELEVATION



NORTH WEST ELEVATION