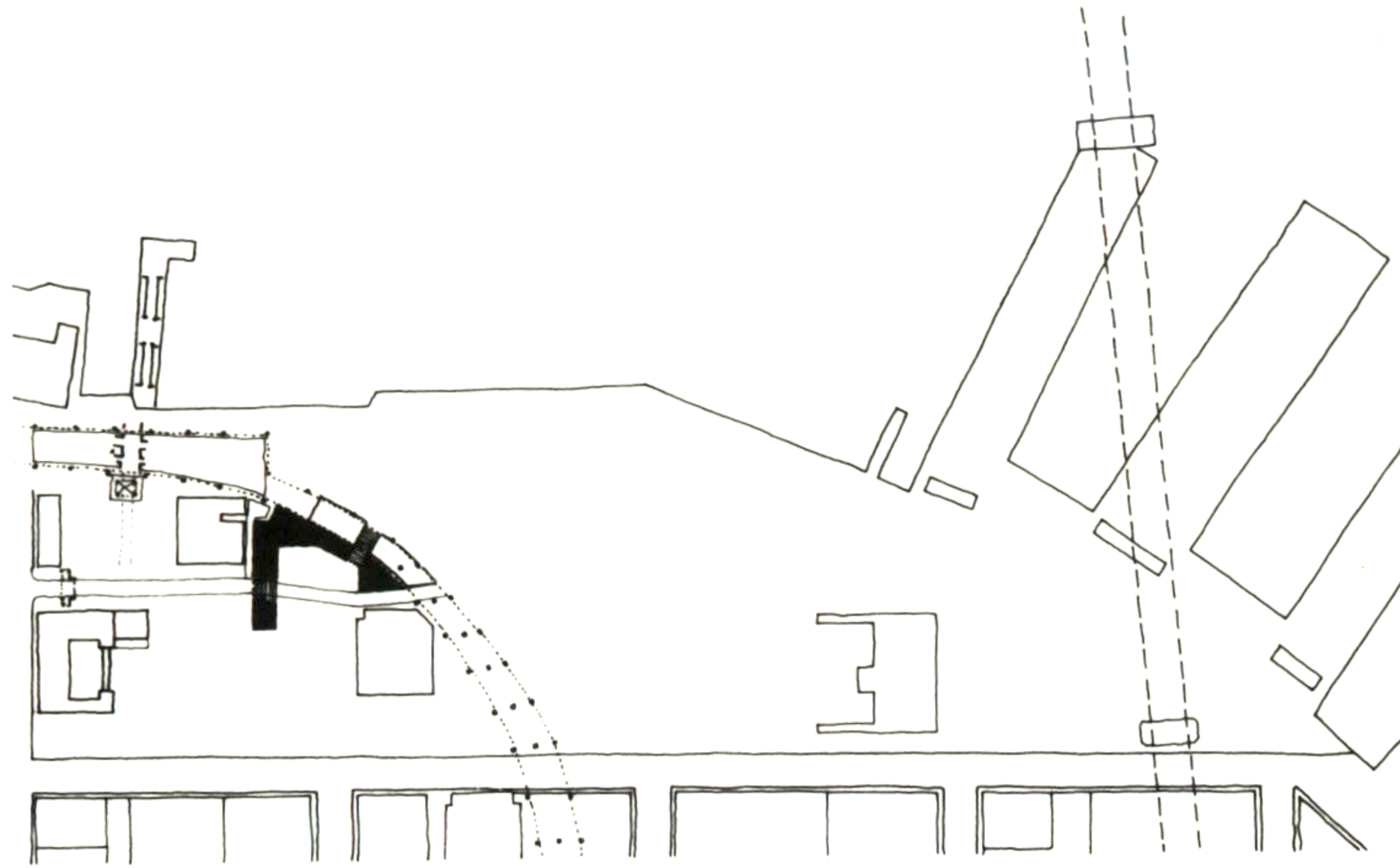


## 5. COMMUNITY BANK

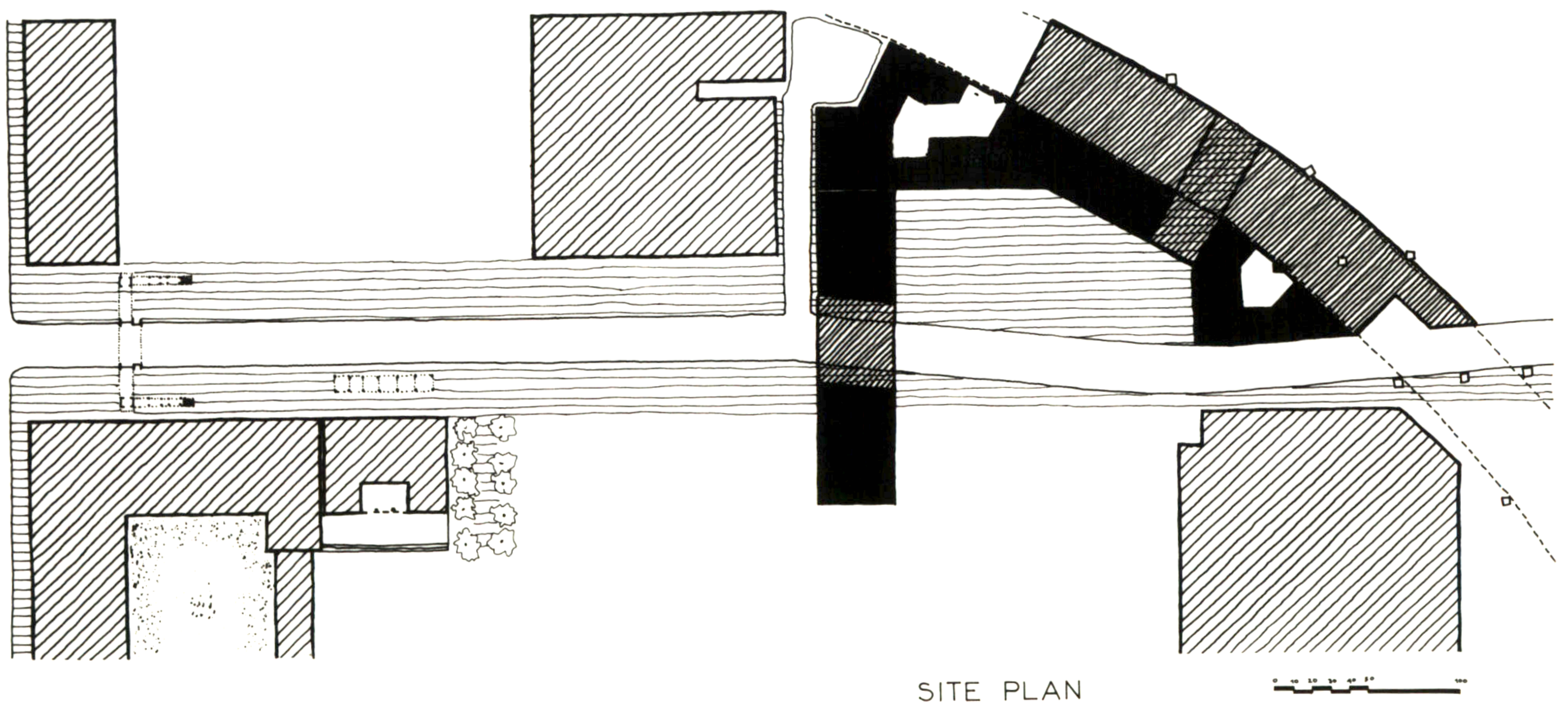


THE PROJECT IS A COMPLEX OF THREE BUILDINGS, WHICH FORM A U-SHAPE OPEN SPACE FACING S-W.

THE TWO FIRST FLOORS OF THE BUILDINGS ARE CONSISTED OF SMALL COMMUNITY SERVICES AND THE COMMUNITY BANK, AND THE UPPER FLOORS OF OFFICES FOR DIFFERENT ENTERPRECISES. IN THE PARTS OF THE BUILDING UNDER THE FREEWAY THERE ARE WOOD- AND METAL-WORKSHOPS.

THE FIRST BUILDING OF THE COMPLEX, NEXT TO THE Y.M.C.A., HELPS TO DEFINE THE PEDESTRIAN AND CAR AXIS BETWEEN THE GATE AND THE BUILDING THOROUGHFARE. THE PASSAGE OPENS ON TO A MEDIUM SIZE SQUARE, WHICH IS SURROUNDED BY THE STREET AND THE THREE BUILDINGS.

BETWEEN THE OTHER TWO BUILDINGS WHICH RUN PARALLEL TO THE FREEWAY, A VAULTED TUNNEL UNDER THE FREEWAY IS FORMED. IT IS A POINT OF TRANSITION TO THE OTHER PART OF THE SITE. STANDING THERE A NICE VIEW OF THE BAY AND THE ISLAND CAN BE ENJOYED.

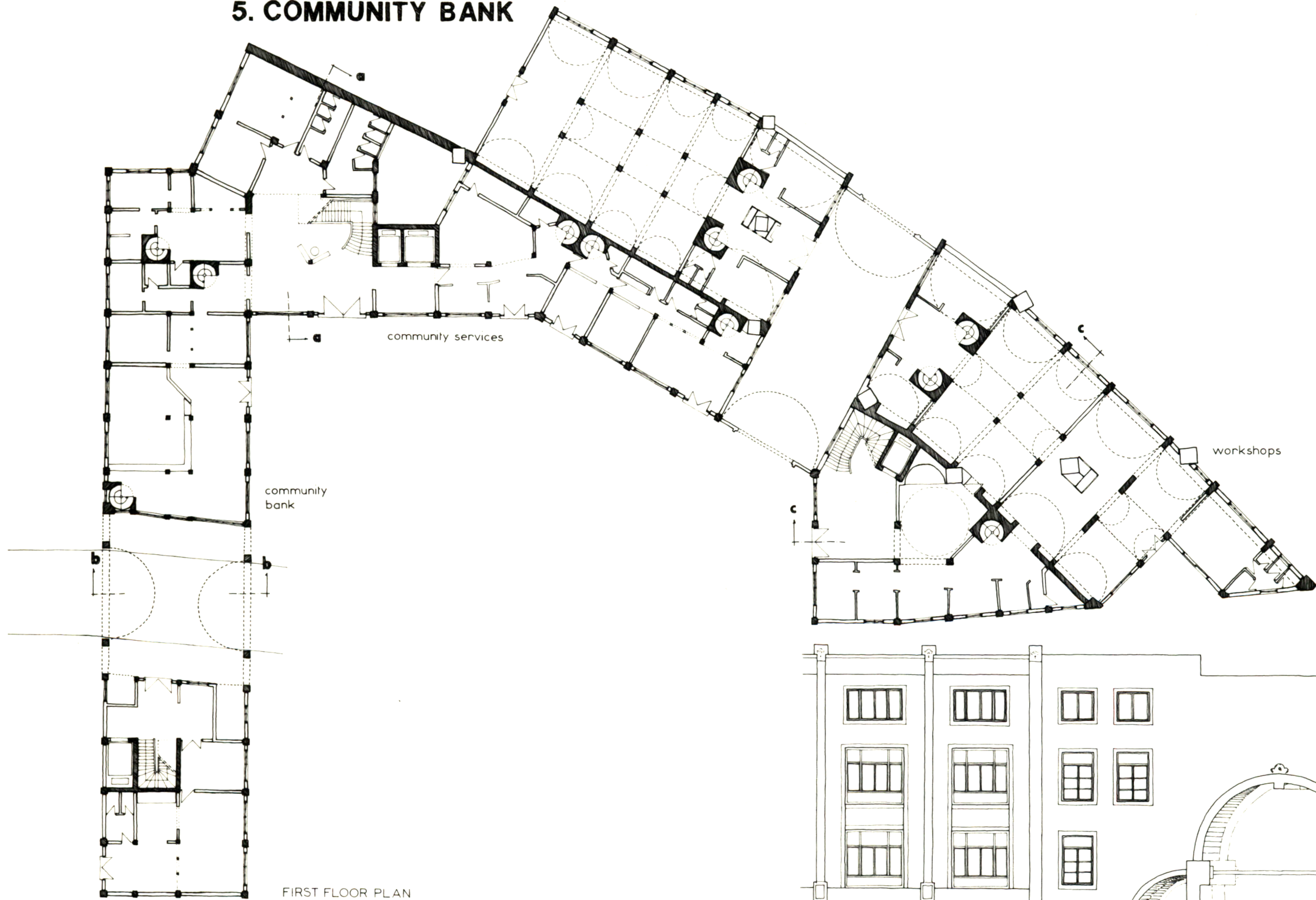


SITE PLAN

**Artemis Anninou**



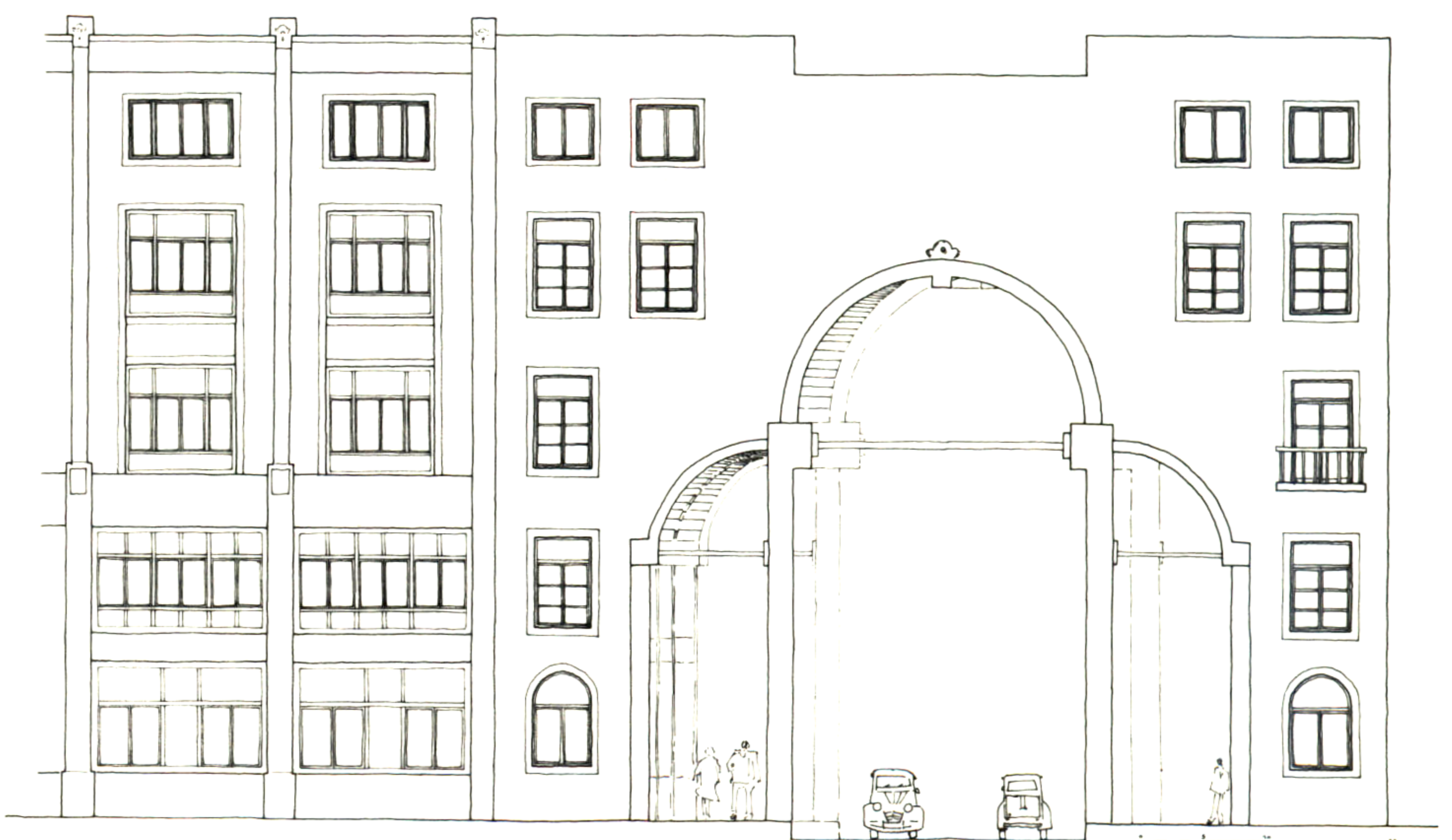
# 5. COMMUNITY BANK



FIRST FLOOR PLAN

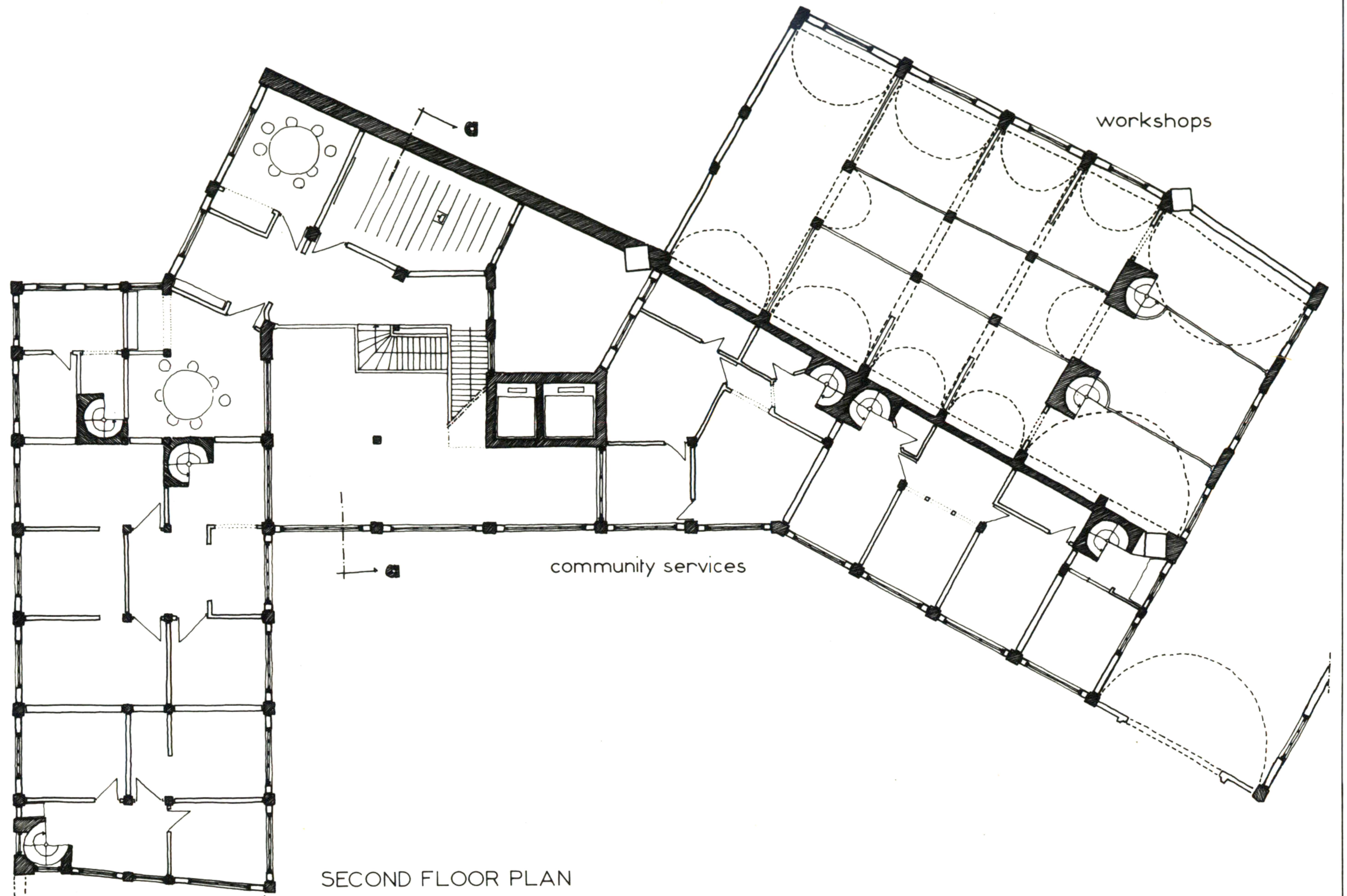
offices

Artemis Anninou

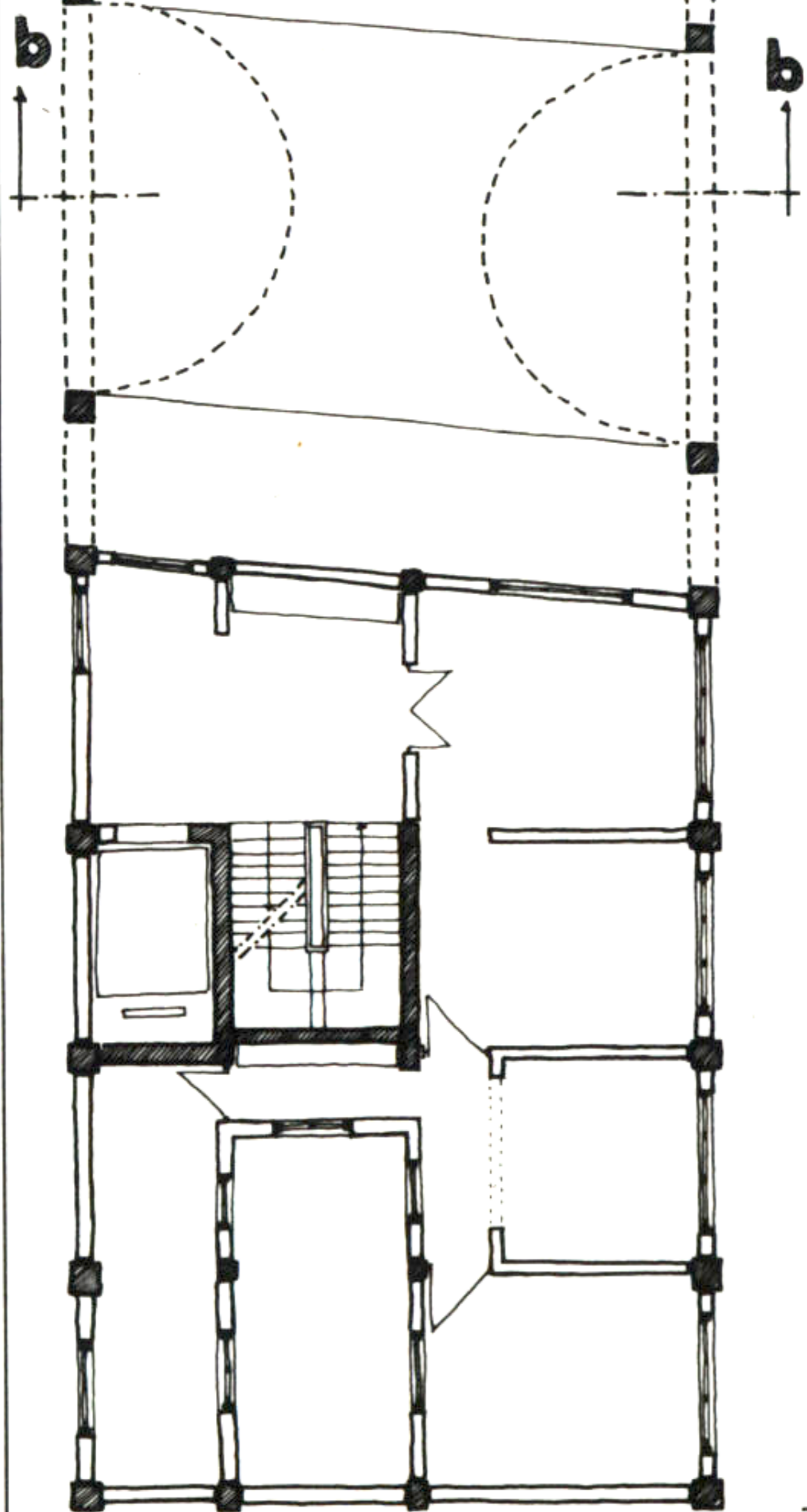




# 5. COMMUNITY BANK



SECOND FLOOR PLAN



offices



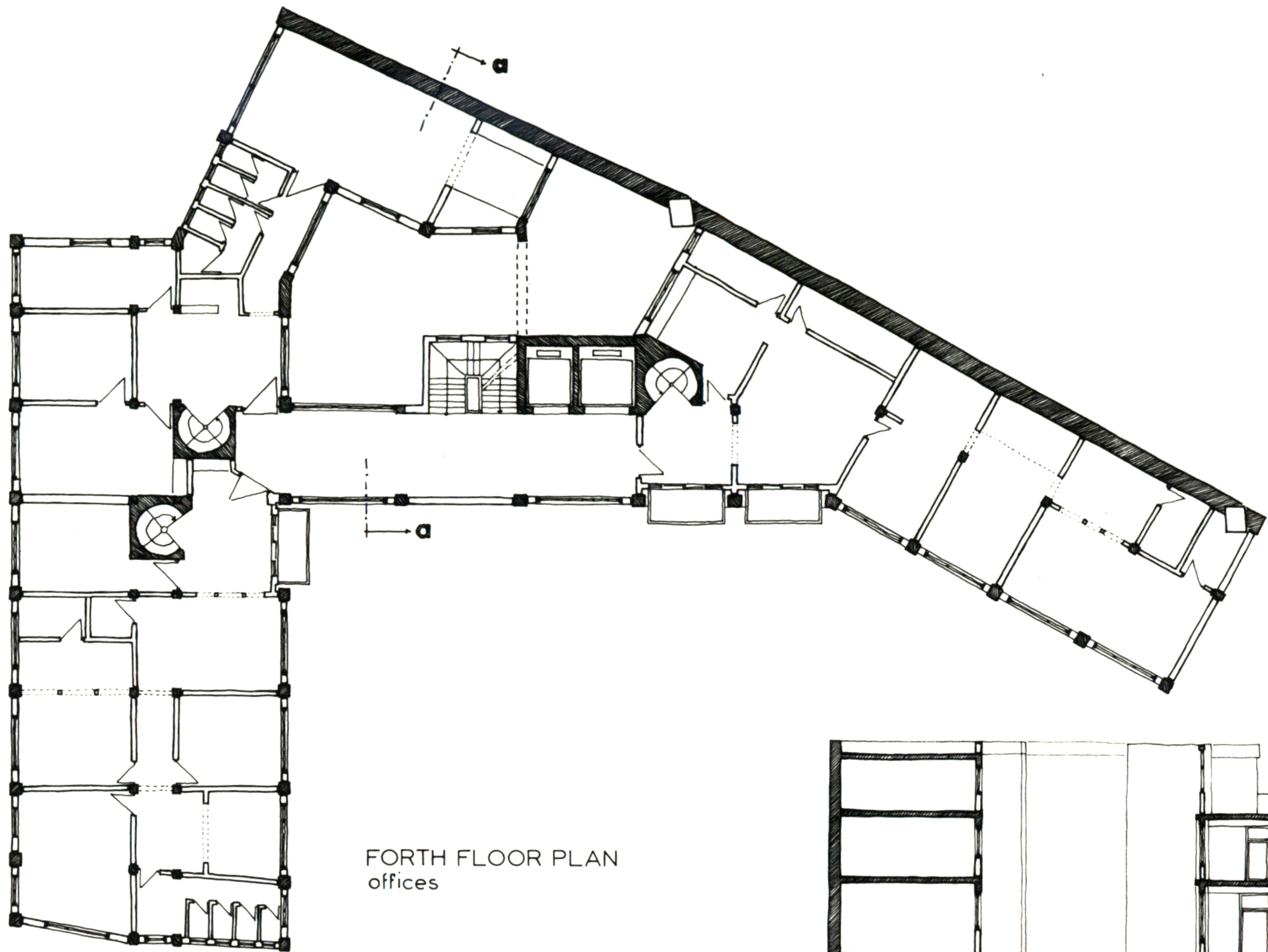
EAST ELEVATION ON THE SQUARE



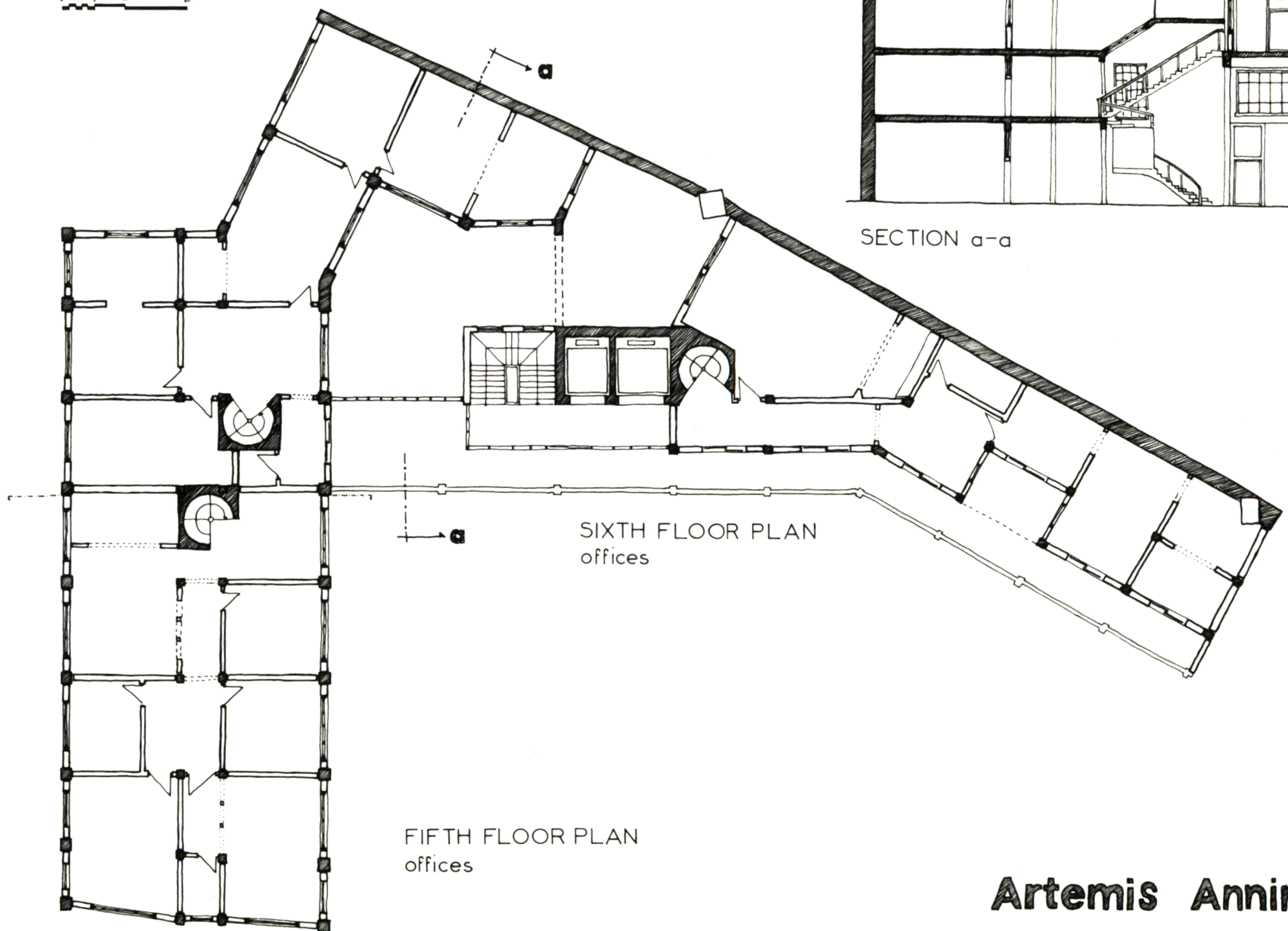
**Artemis Anninou**



# 5. COMMUNITY BANK

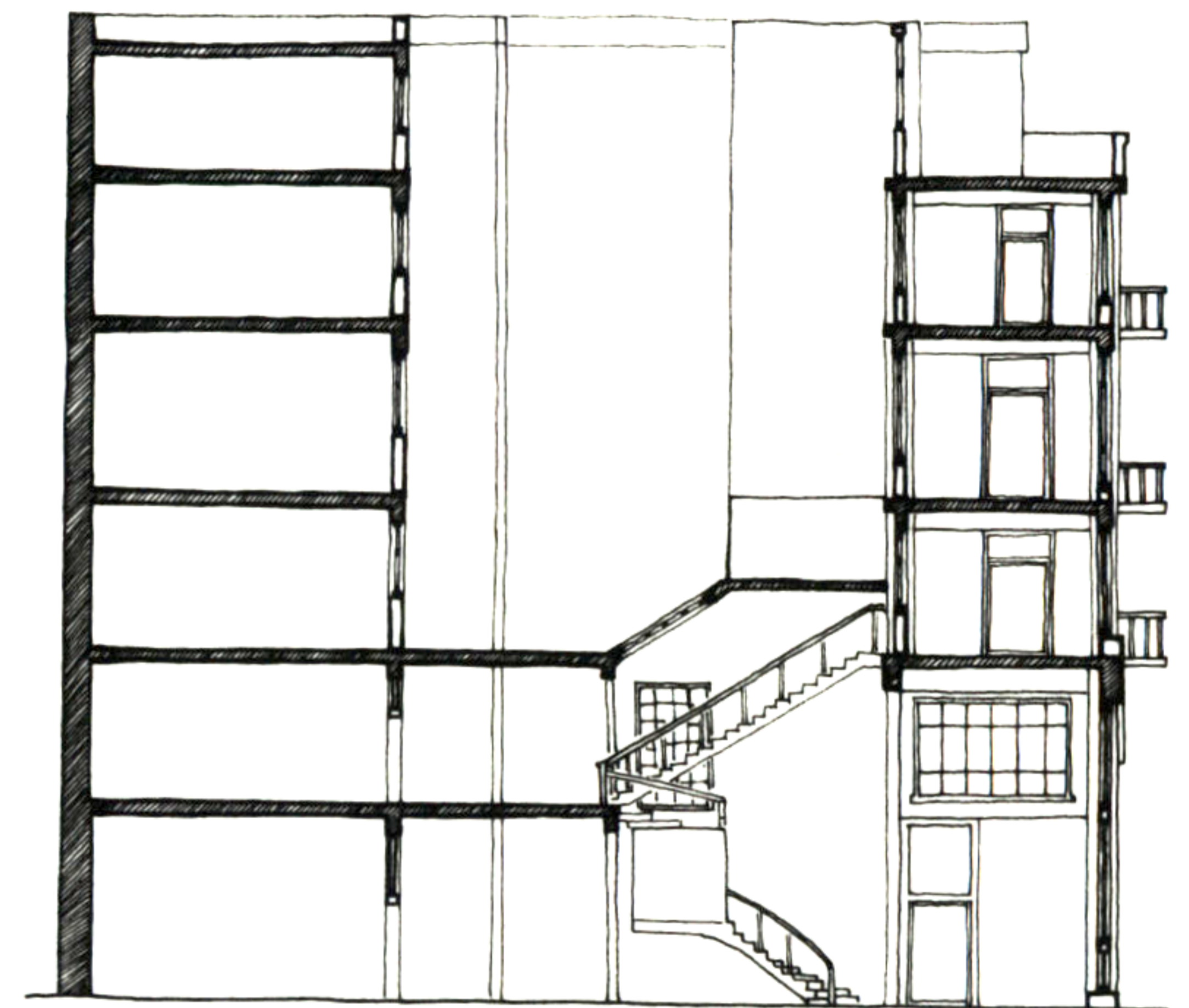


FORTH FLOOR PLAN  
offices



SIXTH FLOOR PLAN  
offices

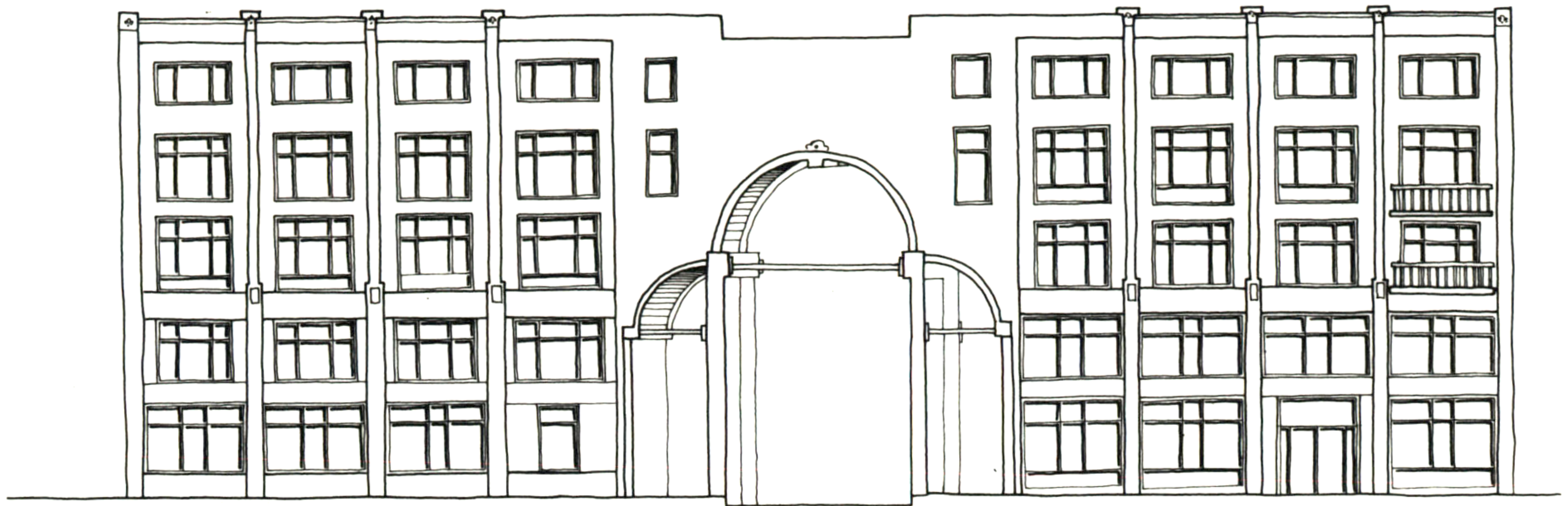
FIFTH FLOOR PLAN  
offices



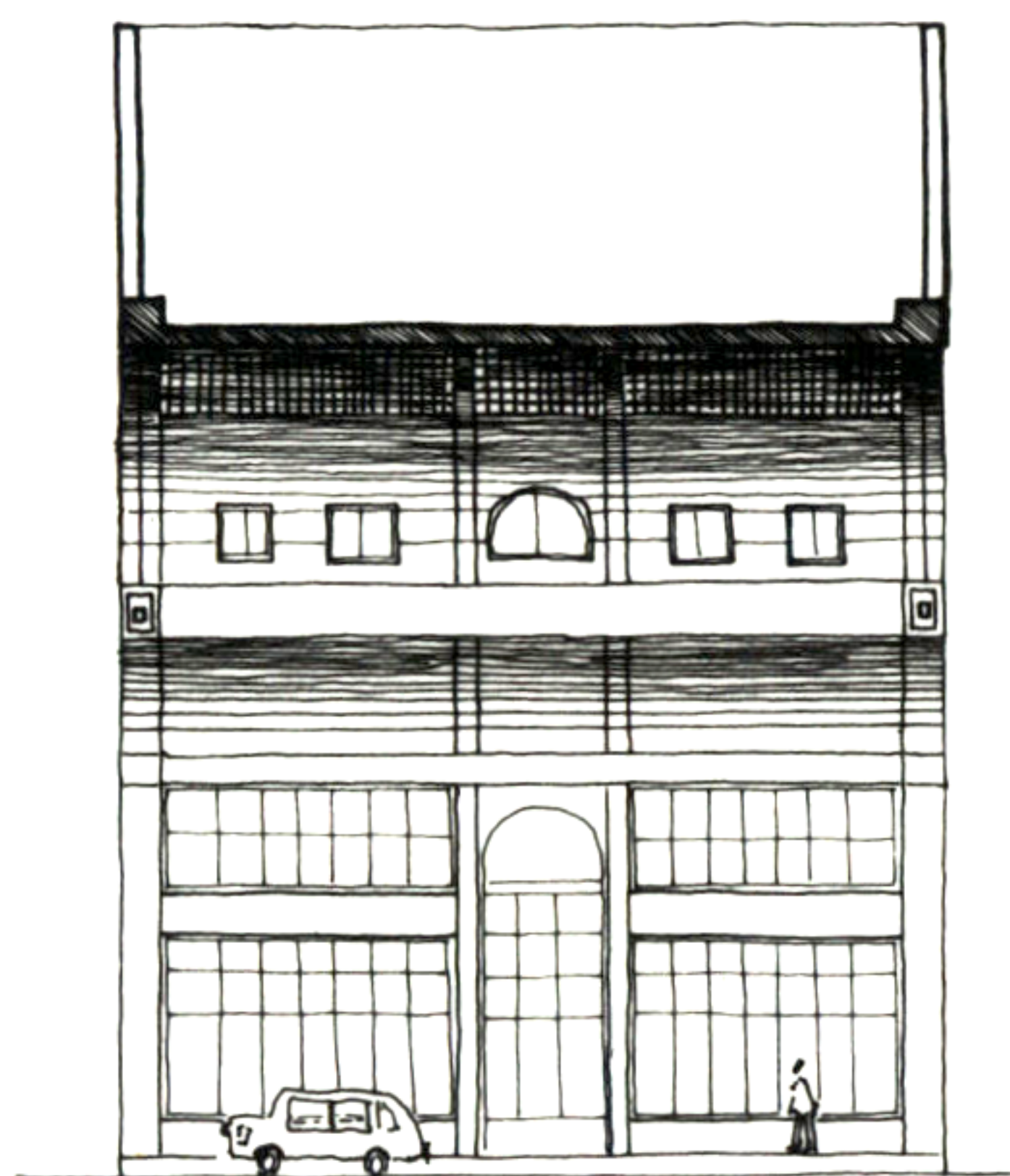
SECTION a-a



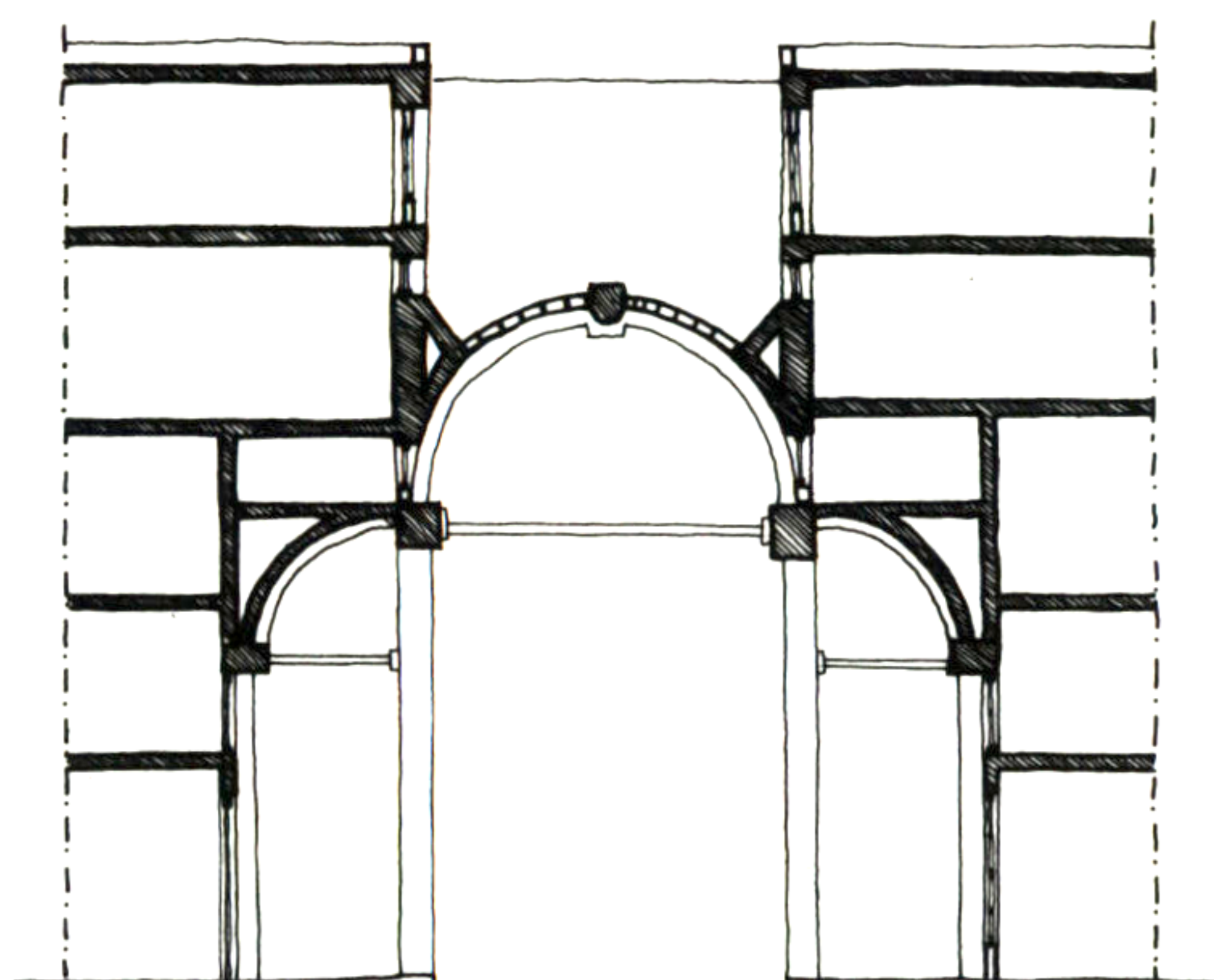
# 5. COMMUNITY BANK



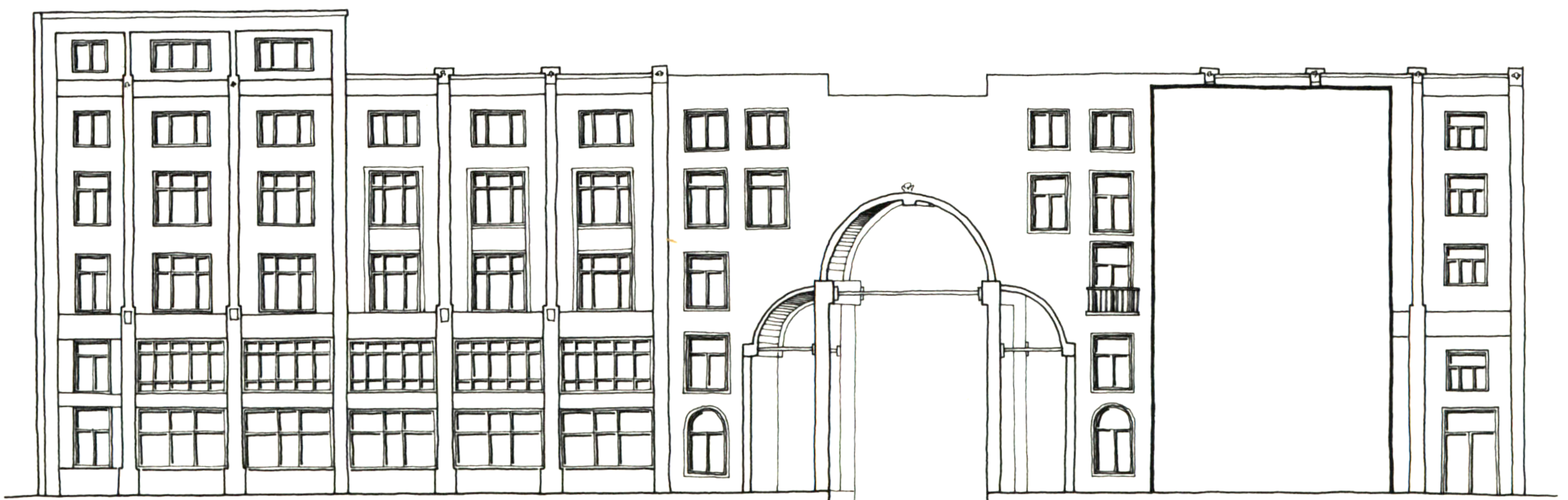
SOUTH-EAST ELEVATION ON THE SQUARE



SECTION b-b



SECTION b-b

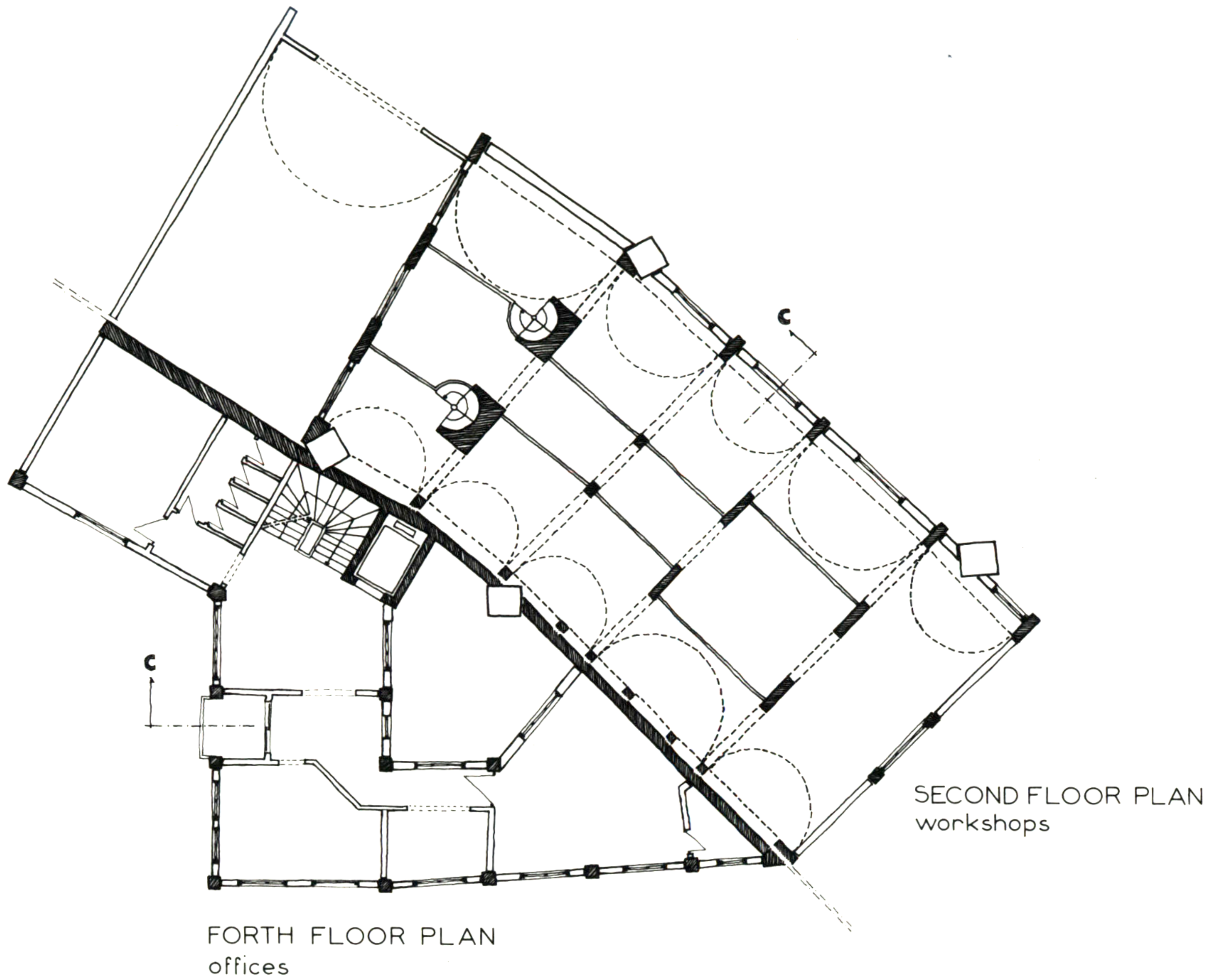


NORTH-WEST ELEVATION ON THE STREET

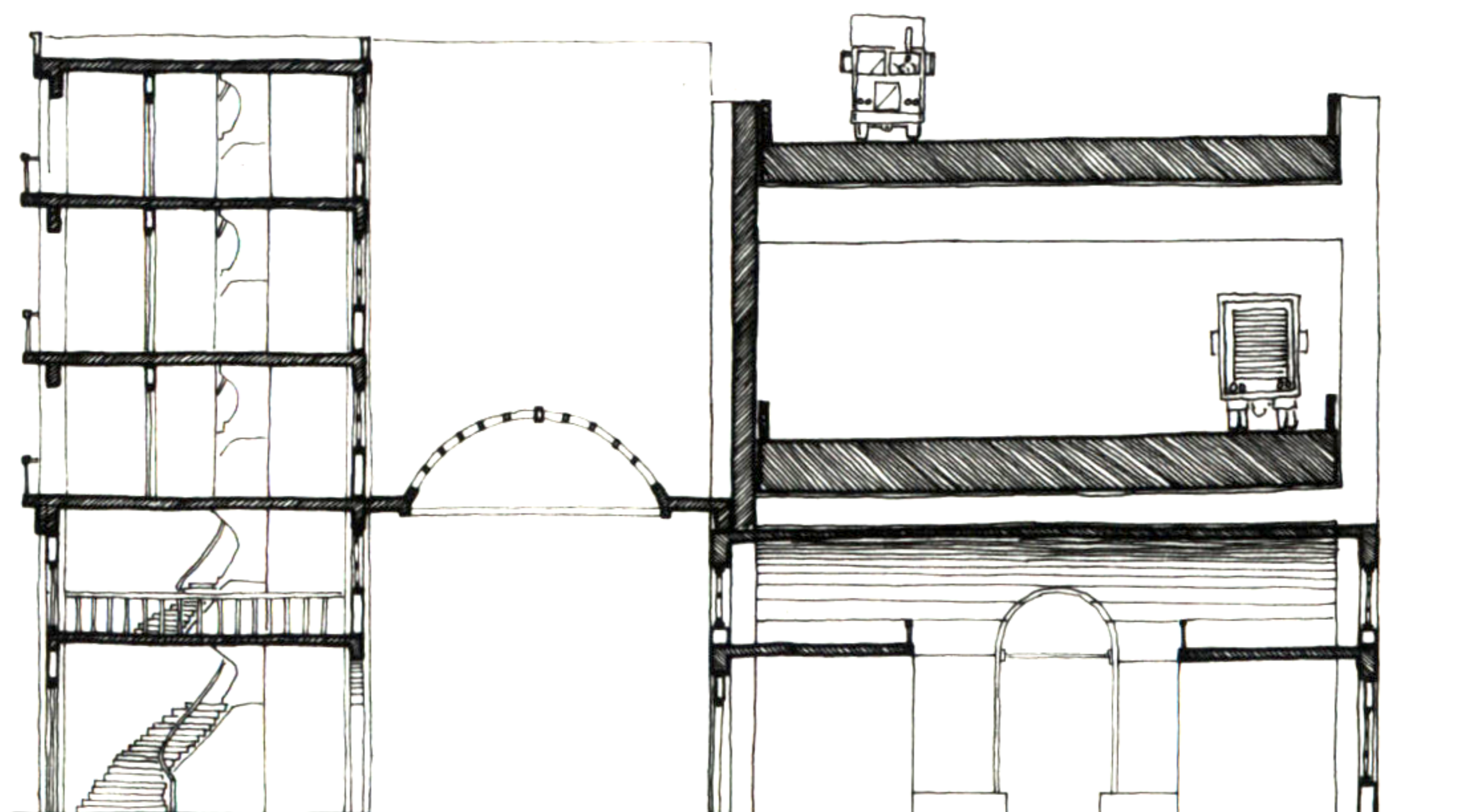
**Artemis Anninou**



# 5. COMMUNITY BANK



NORTH WEST ELEVATION ON THE SQUARE



SECTION c-c

