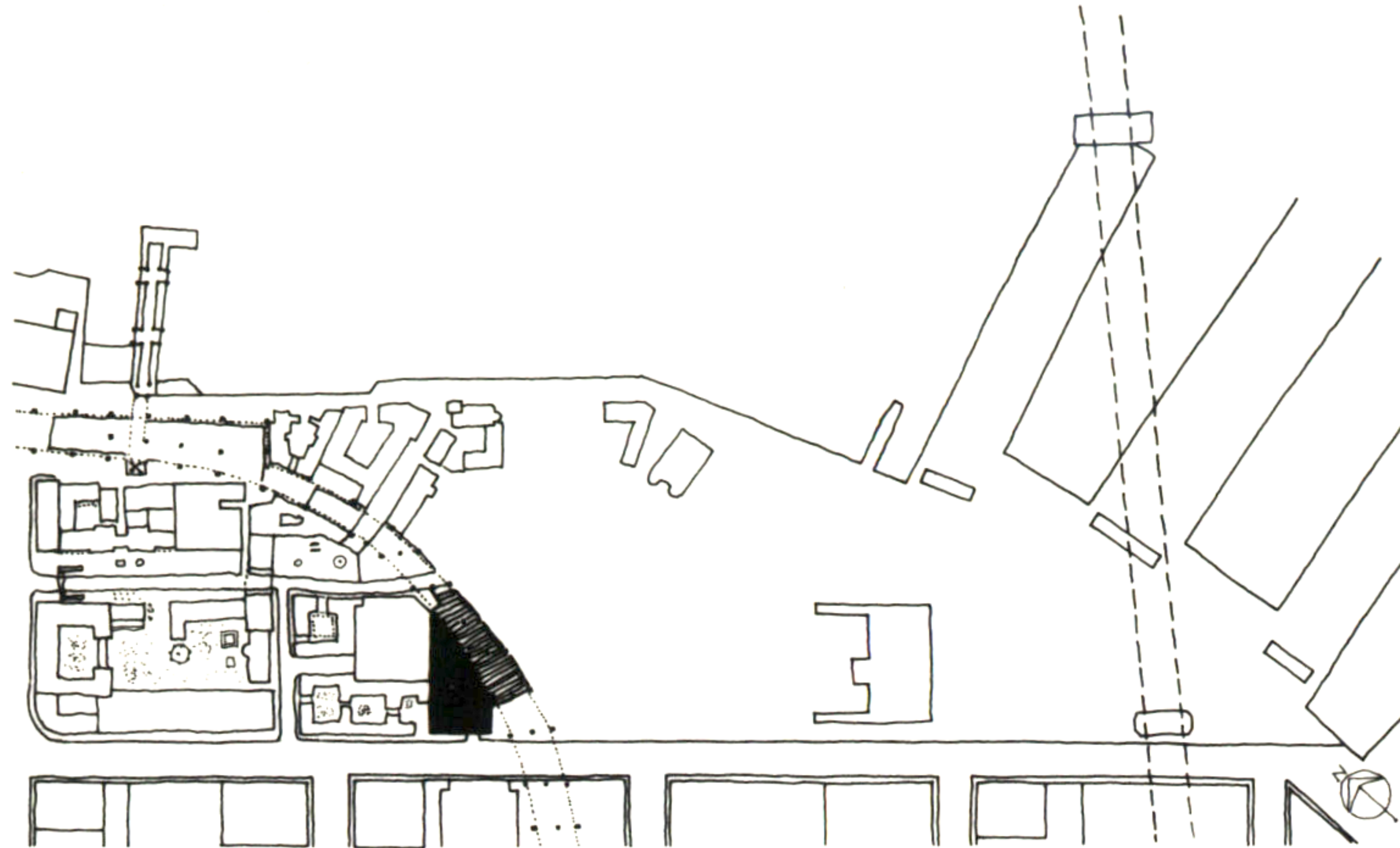


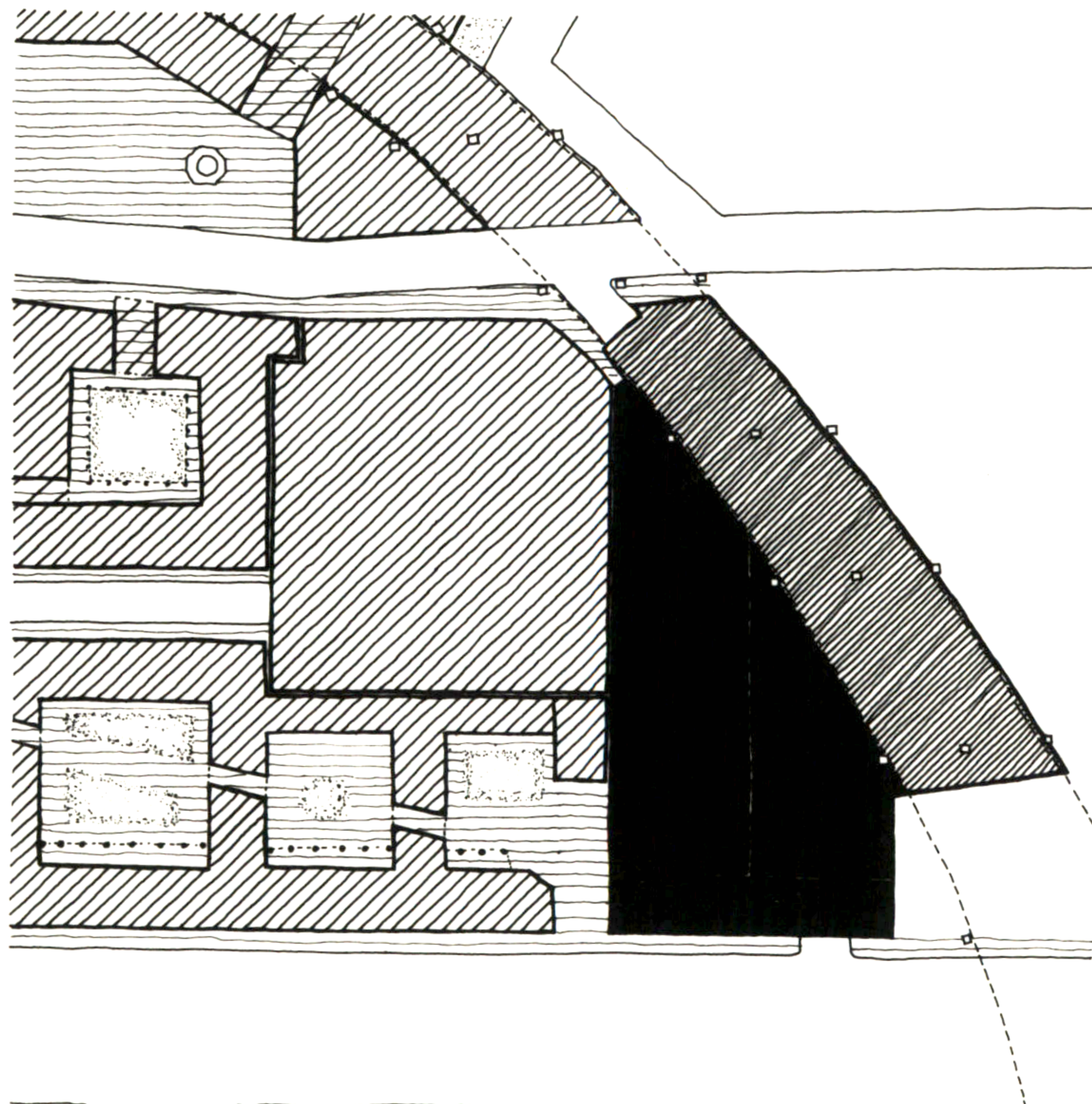
24. A GARAGE



ACCORDING TO THE NEEDS OF THE DEVELOPMENT OF THE AREA A NEW PARKING STRUCTURE HAS TO BE BUILT. THE LOCATION OF THE STRUCTURE HAS TO FOLLOW THE PREVIOUS AGREEMENT ABOUT PARKING STRUCTURES, WHICH CONFINES THEM IN THE AREA ALONG SPEAR STREET.

THE MOST APPROPRIATE PLACE FOR THE NEW GARAGE SEEMED TO BE THE AREA BETWEEN THE EXISTING PARKING STRUCTURE AND THE FREEWAY, MAKING USE OF THE SPACE UNDER THE FREEWAY FOR PARKING. THE GARAGE EXTENDS BETWEEN SPEAR STREET AND THE STREET THAT CROSSES THE SITE. SO A SECONDARY ENTRANCE TO THE PARKING CAN BE PROVIDED FROM WITHIN THE AREA WHICH IS UNDER DEVELOPMENT.

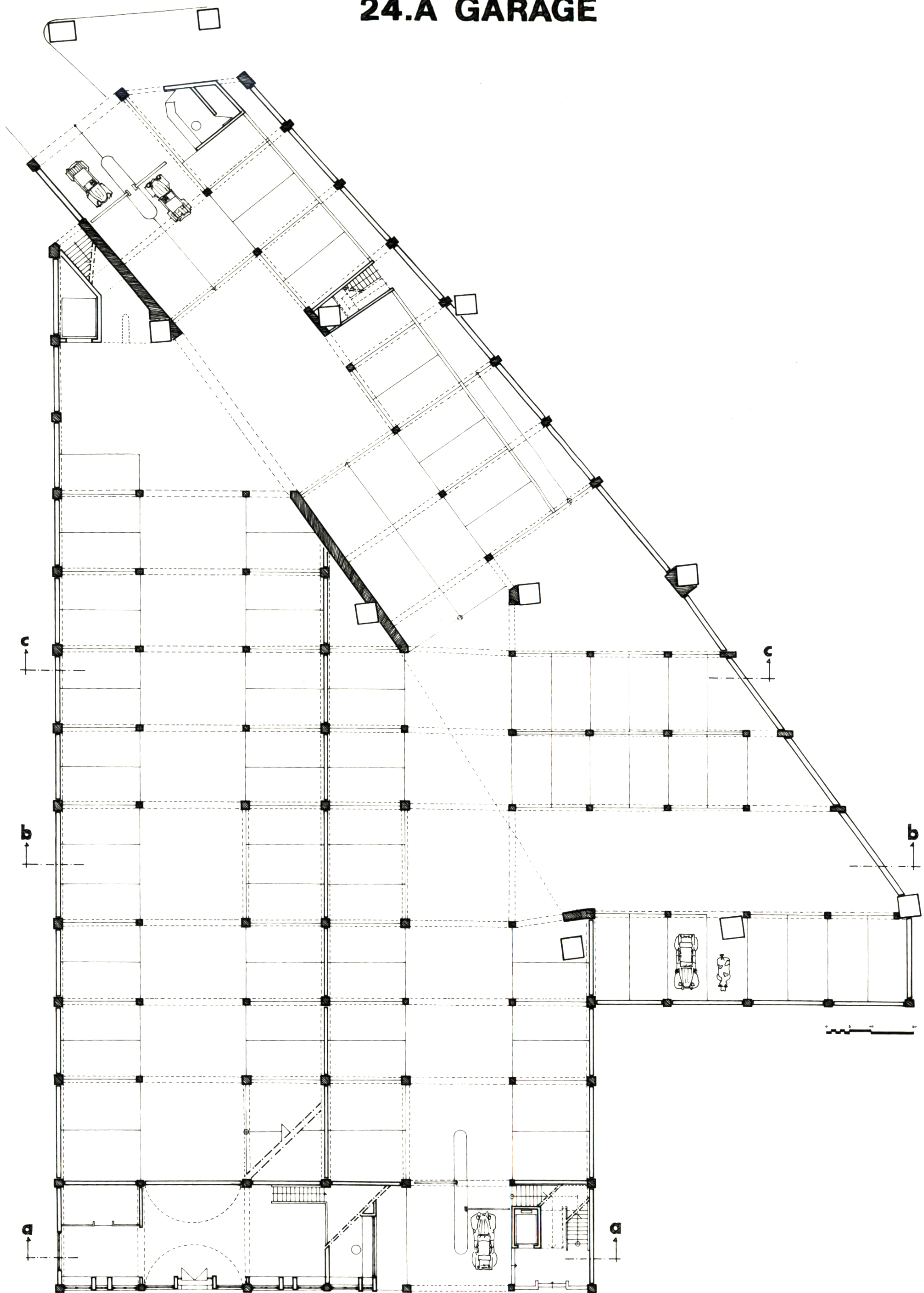
THE FRONTAGE OF THE GARAGE IS SHIELDED BY A ONE-STORY SHOP WHICH EXHIBITS AND SELLS STRING INSTRUMENTS.



SITE PLAN



24.A GARAGE

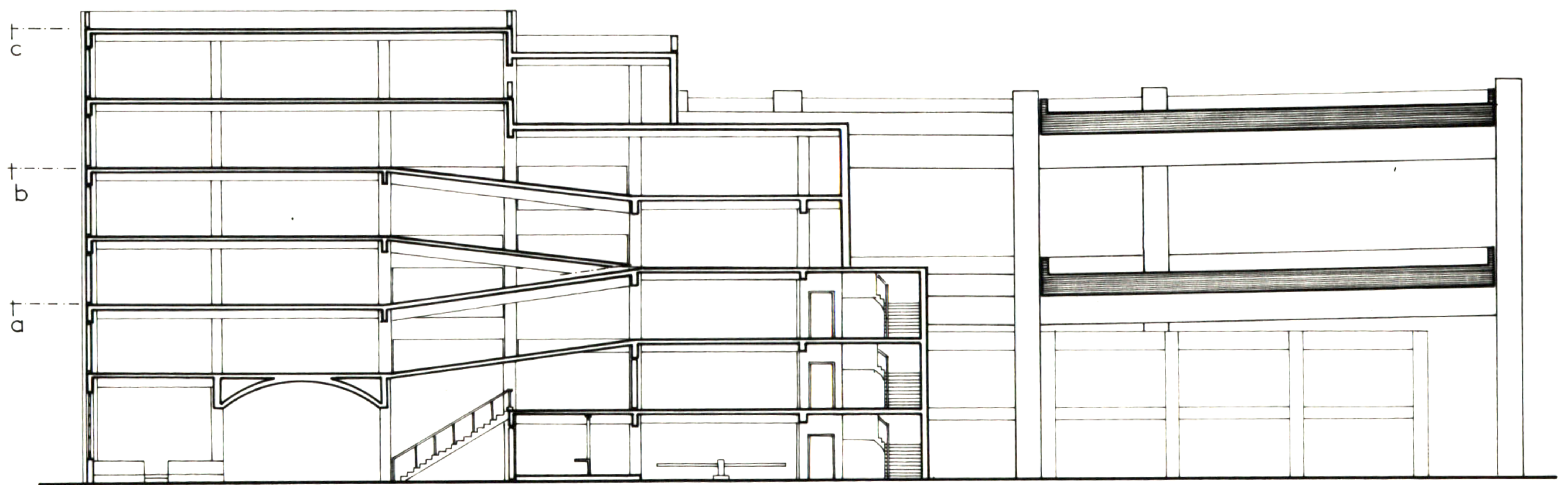


Anninou Artemis

24. A GARAGE



ELEVATION ON SPEAR STREET



SECTION

Artemis Anninou