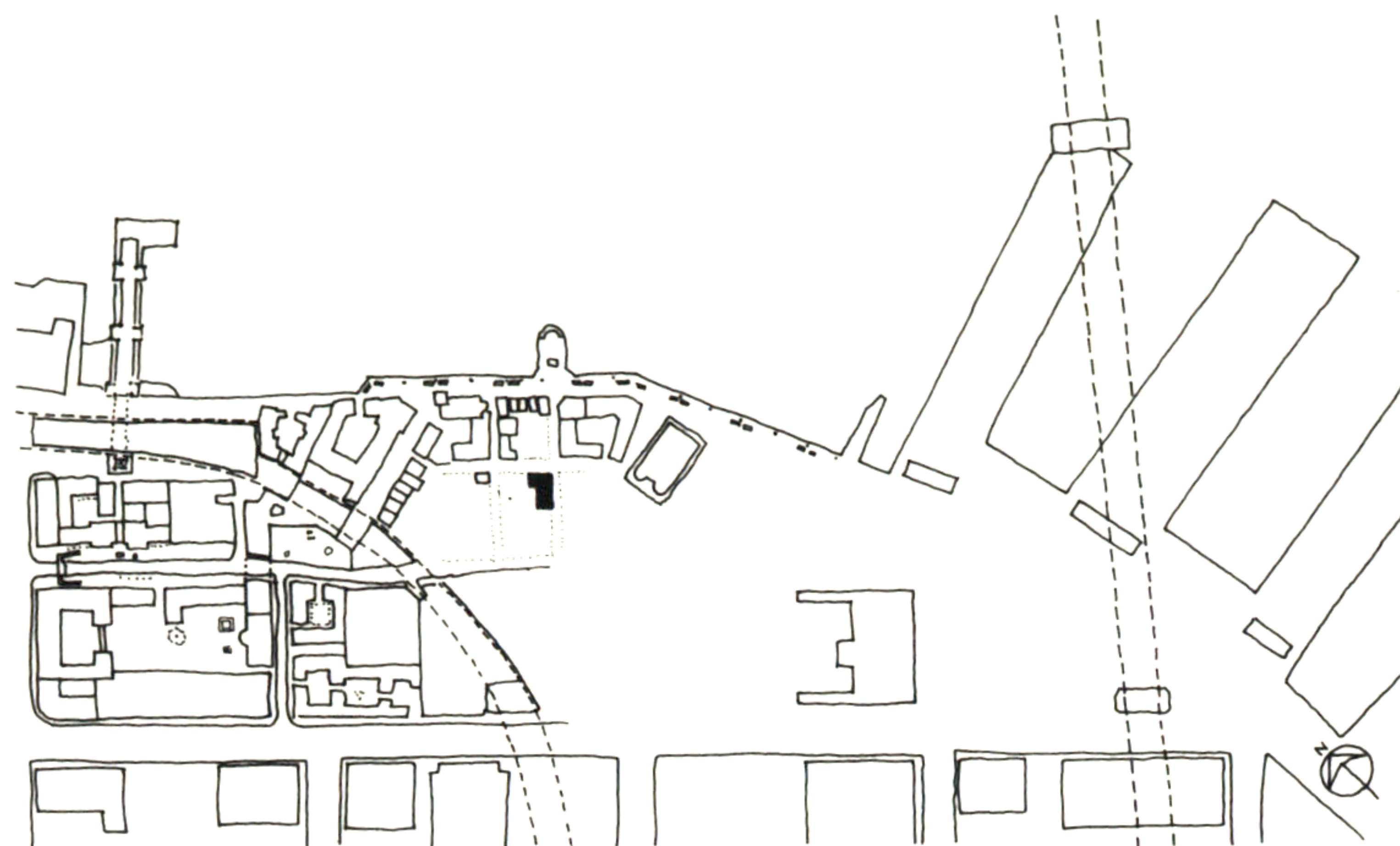


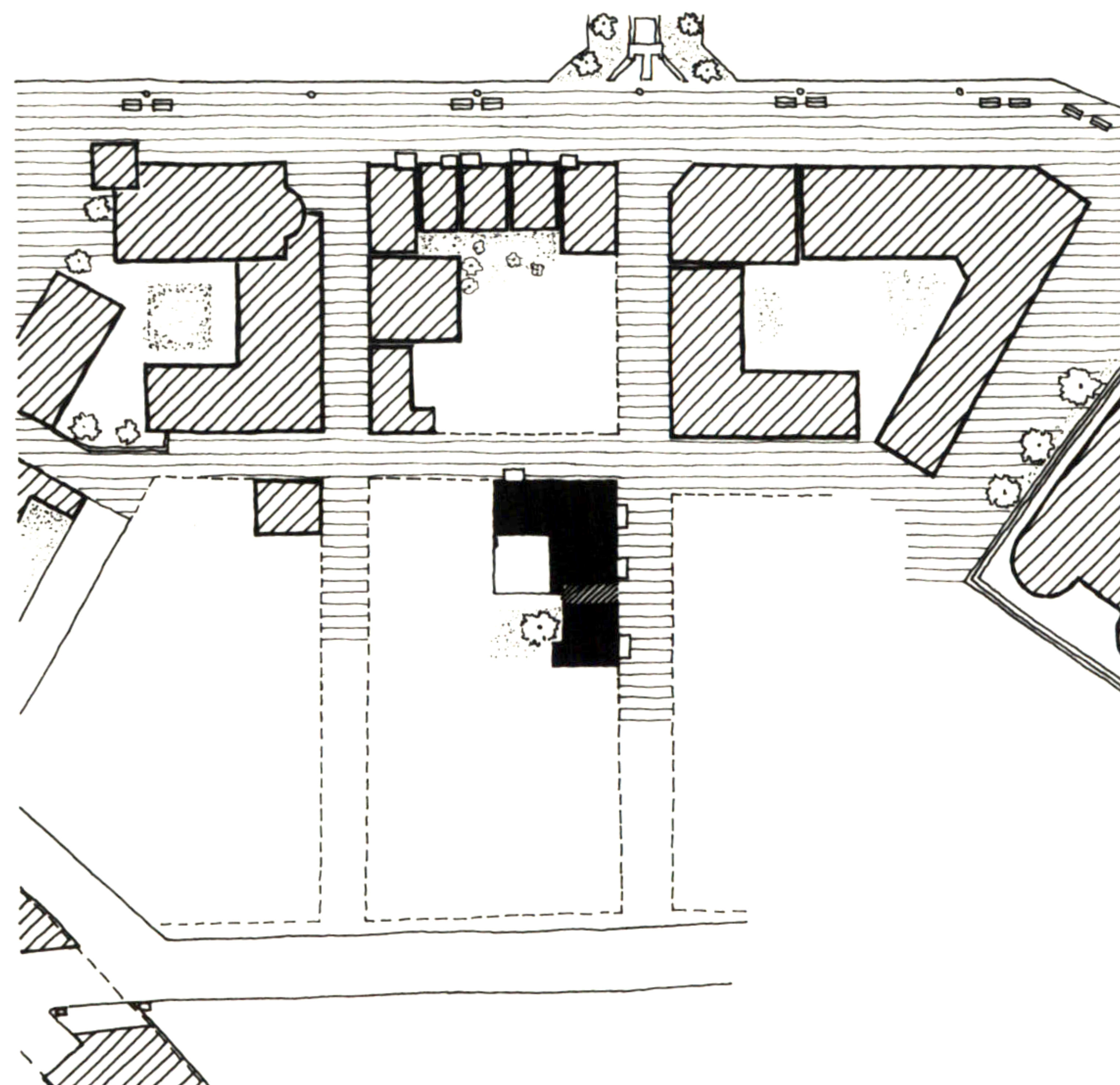
34. APARTMENTS AND SHOPS



THE APARTMENT BUILDING IS LOCATED AT THE CORNER OF ONE BLOCK IN THE GRID AGREED UPON. ON THE GROUND FLOOR OF THE BUILDING THERE ARE THREE SHOPS FACING THE STREETS, --A SMALL SHOE REPAIR SHOP, A TEA-COFFEE SHOP, AND A SEA-FOOD RESTAURANT.

THE BACK OF THE BUILDING STARTS TO FORM THE INTERIOR COURTYARD OF THE BLOCK, WHERE THE RESTAURANT IS EXTENDED IN A SEMI-COVERED TERRASSE. THE ENTRANCE INTO THE COURTYARD FROM THE STREET IS ALMOST AT THE MIDDLE OF THE BLOCK, BETWEEN THE SHOE REPAIR SHOP AND THE RESTAURANT.

ON THE THREE UPPER FLOORS OF THE BUILDING THERE ARE APARTMENTS, WHICH ARE ACCESSED BY TWO ENTRANCES BETWEEN THE SHOPS.



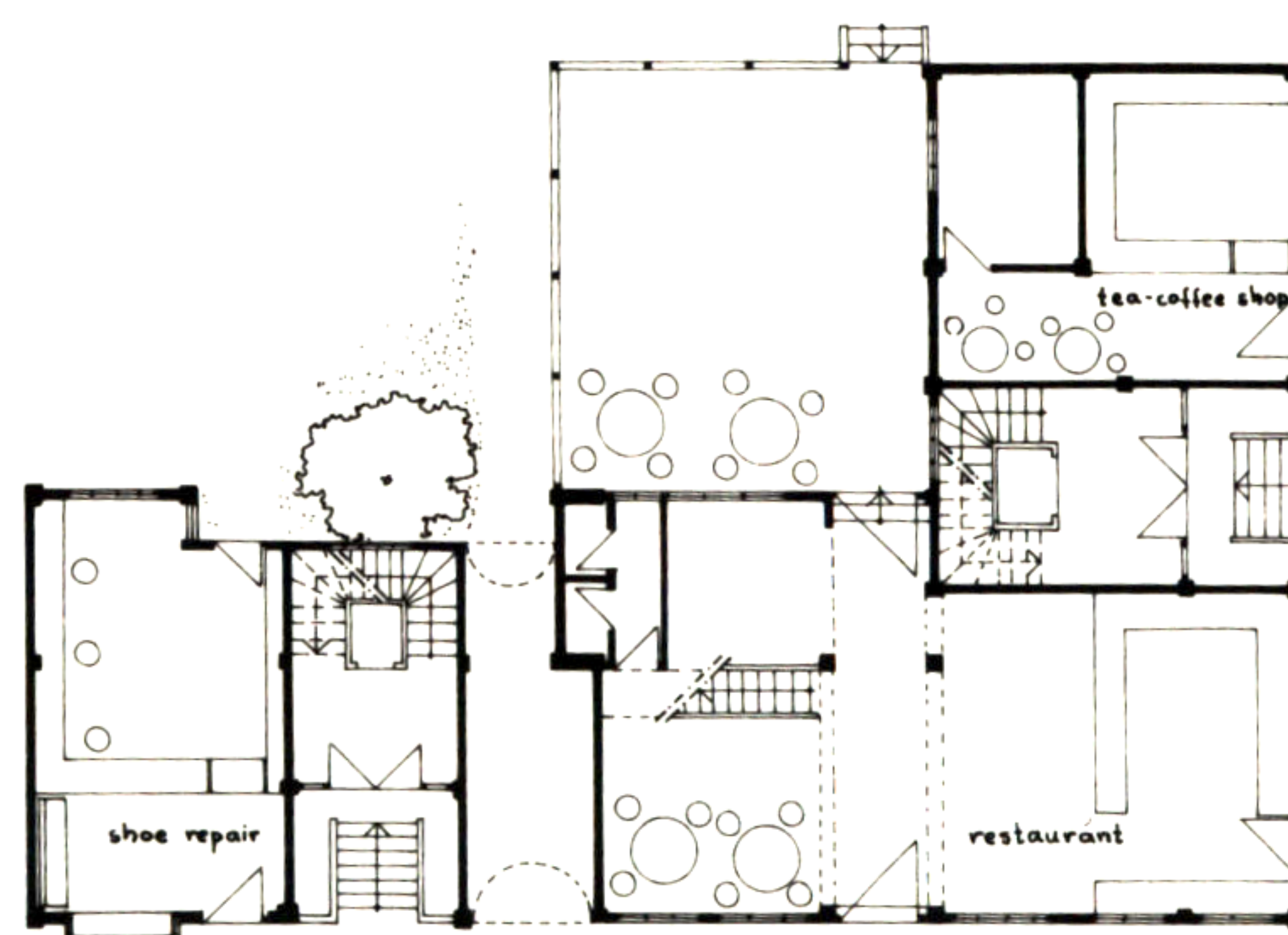
SITE PLAN



34. APARTMENTS AND SHOPS



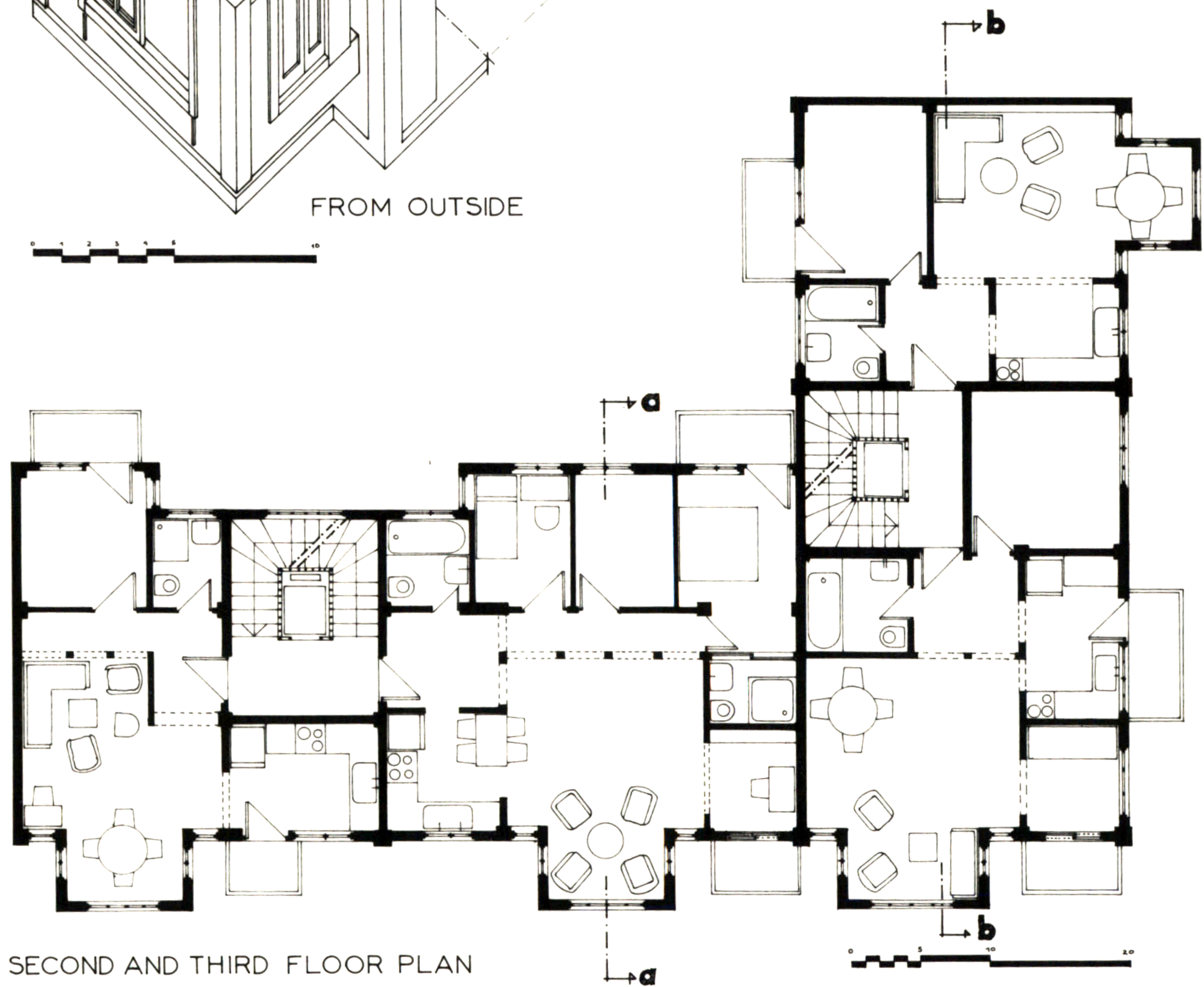
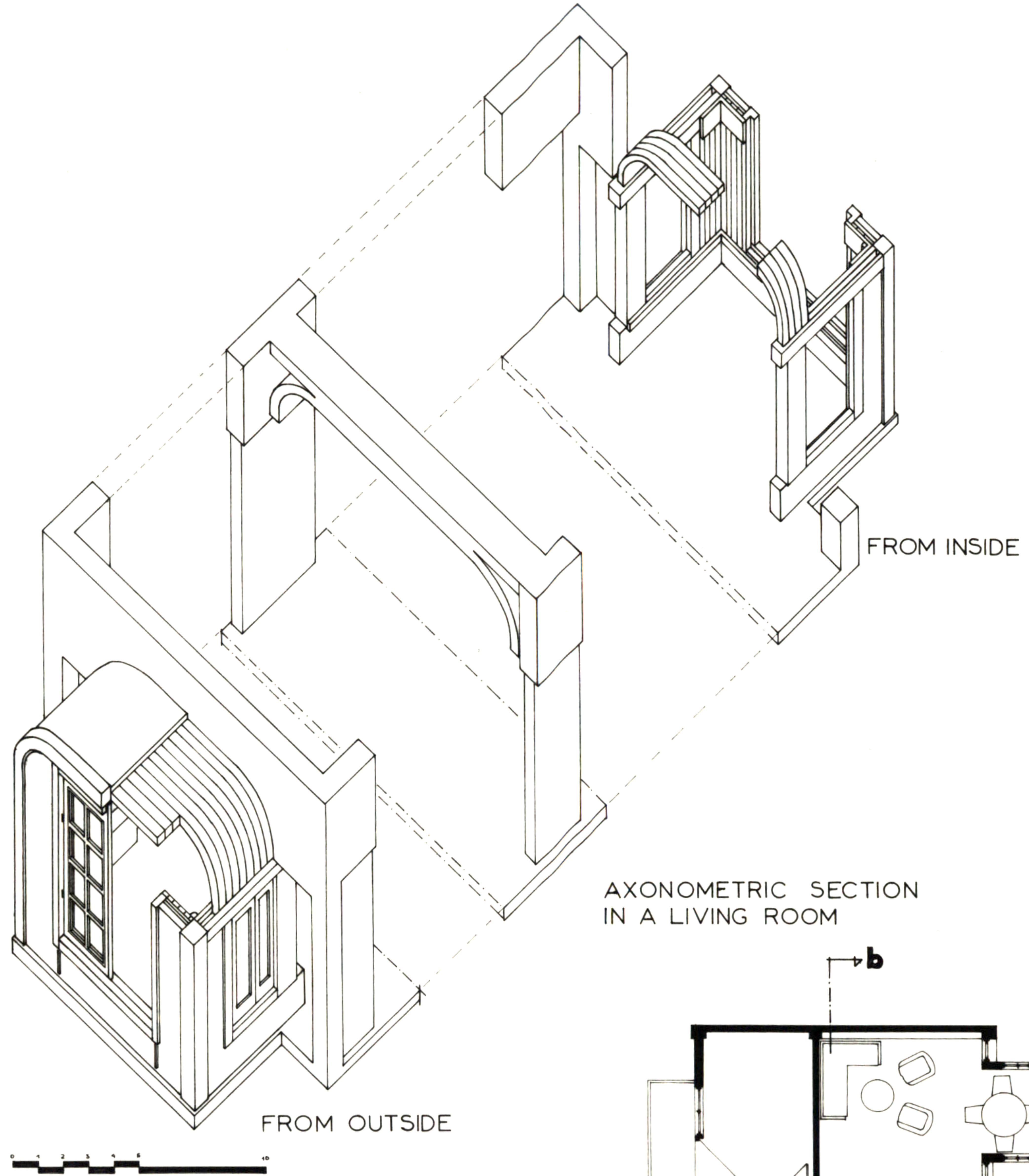
SOUTH-EAST ELEVATION



GROUND FLOOR PLAN



34. APARTMENTS AND SHOPS

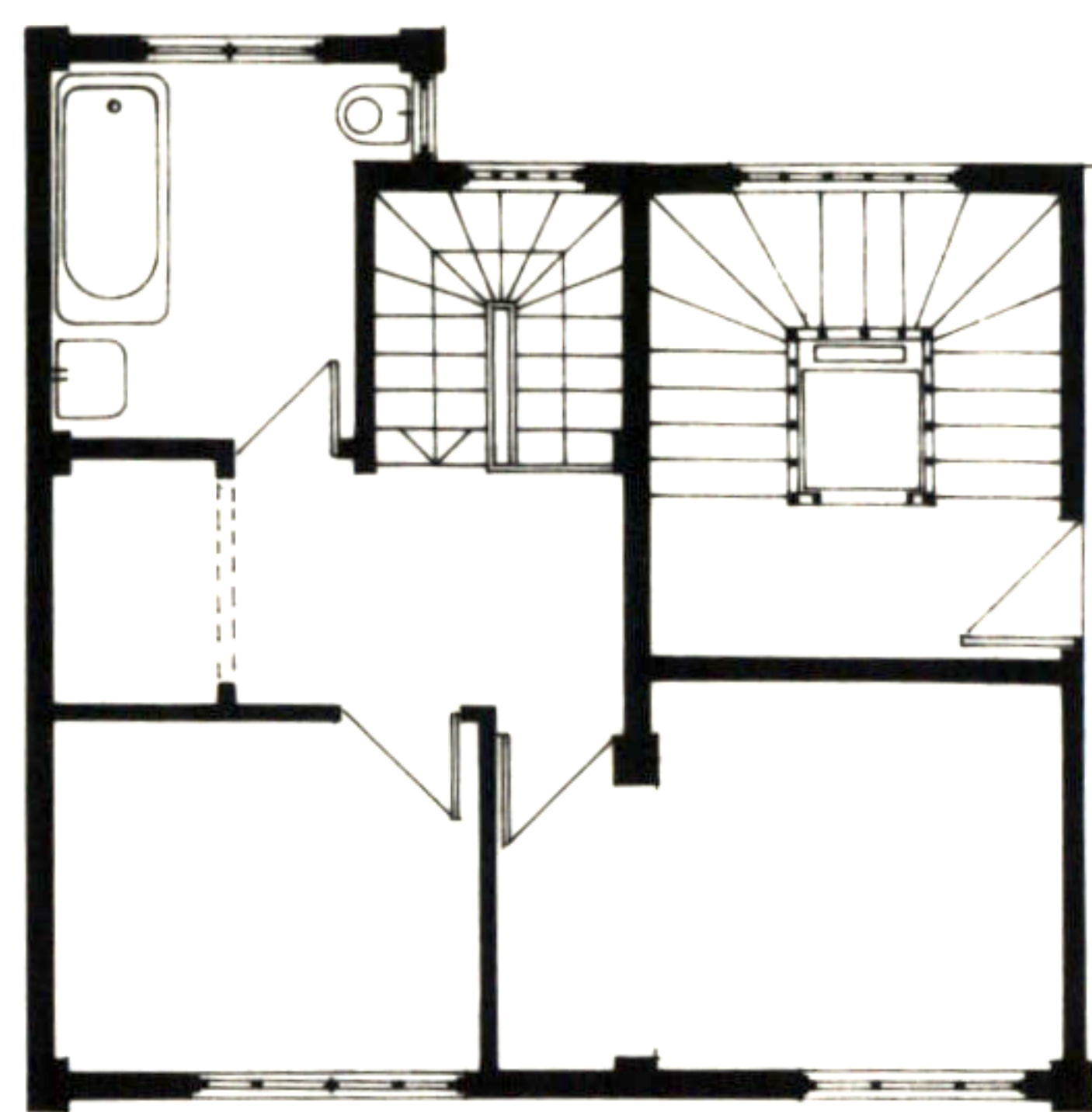
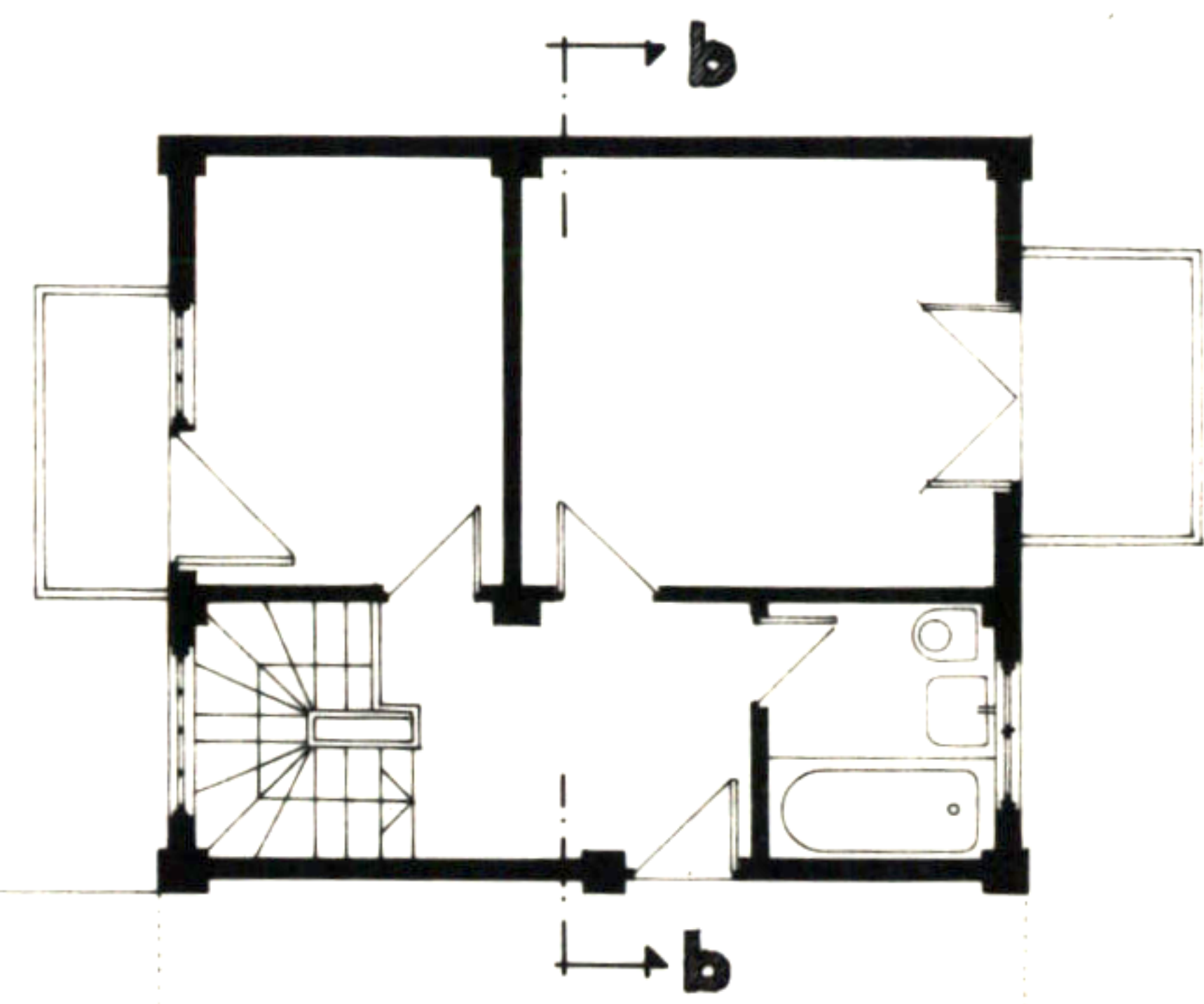


Artemis Anninou

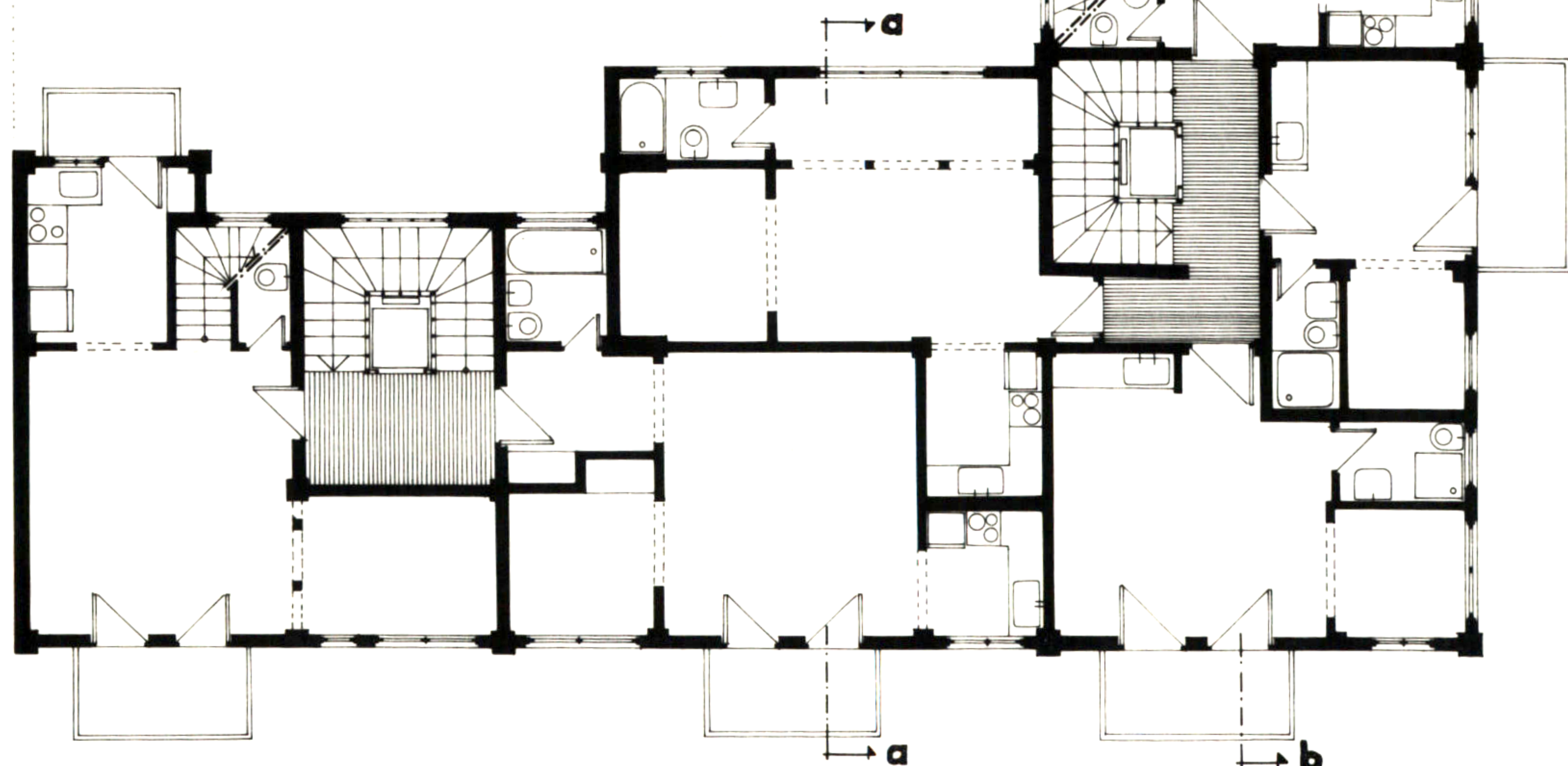
34. APARTMENTS AND SHOPS



NORTH-WEST ELEVATION ON THE COURTYARD



FIFTH FLOOR PLAN



FOURTH FLOOR PLAN



Artemis Anninou

34. APARTMENTS AND SHOPS



SOUTH-WEST ELEVATION SECTION a-a



NORTH-EAST ELEVATION



SECTION b-b

Artemis Anninou