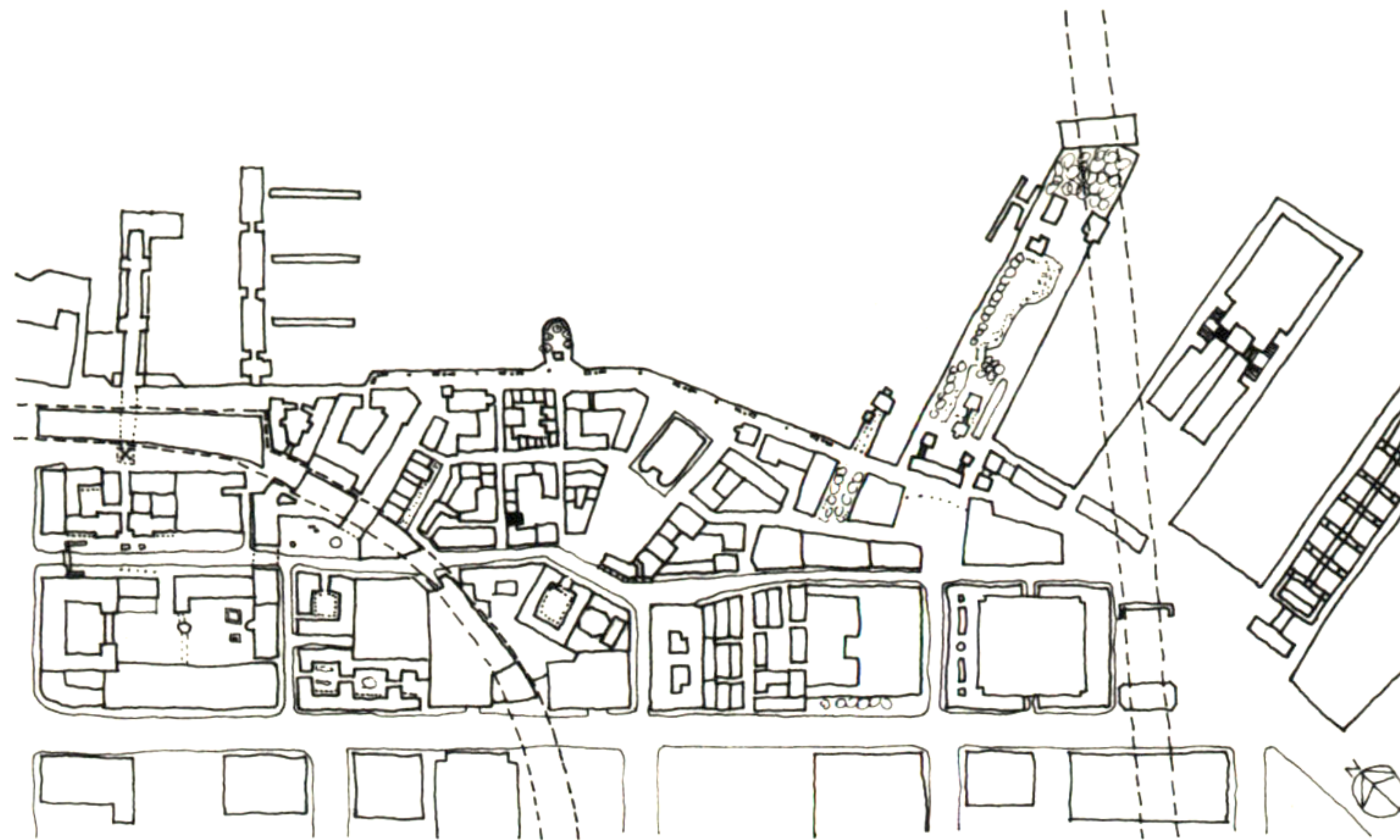


81.MARTIAL ARTS AND HOUSE

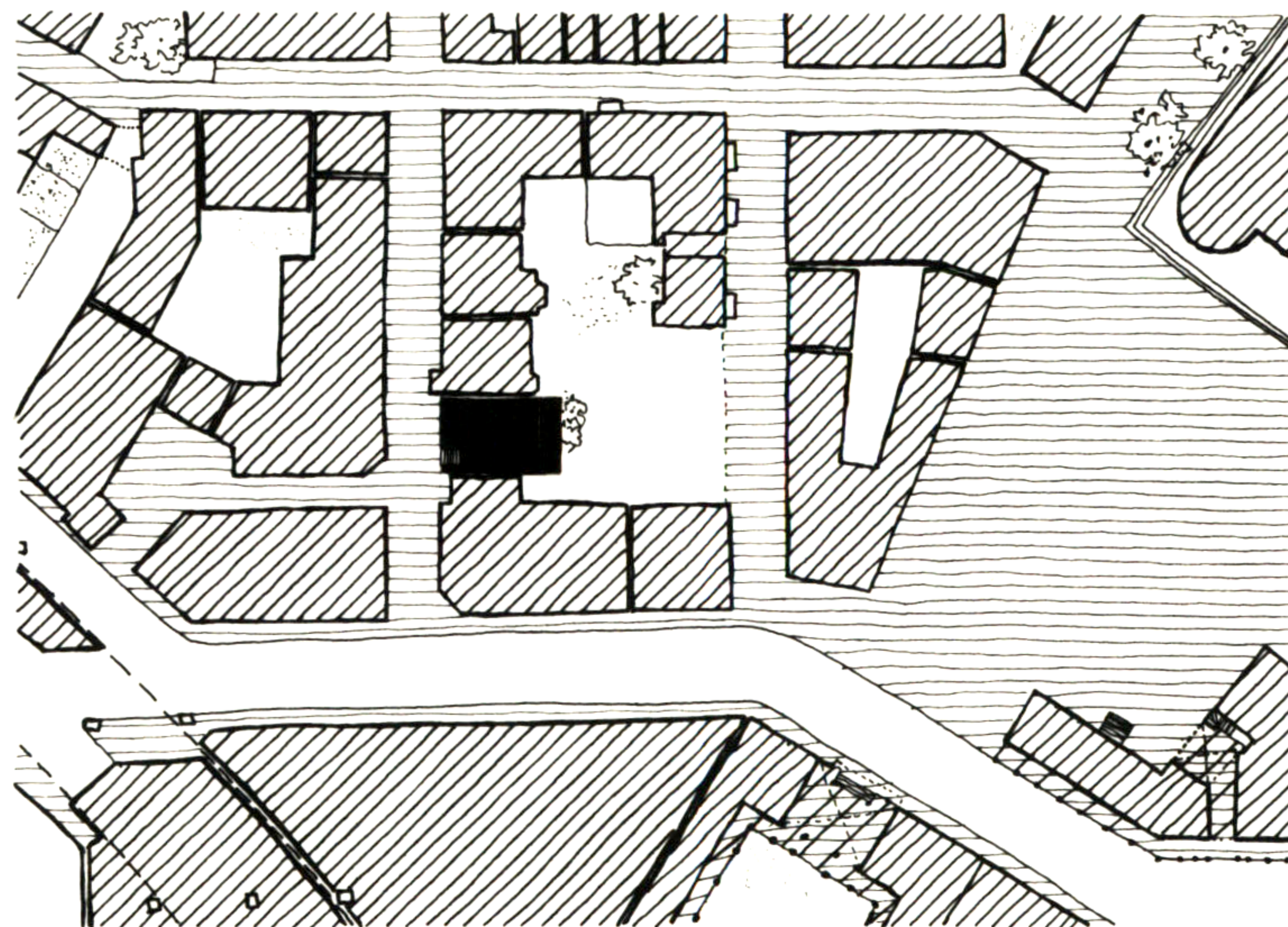


THIS SMALL BUILDING IS ONE OF THE LAST INCREMENTS WHICH ARE GOING TO COMPLETE THE DEVELOPMENT OF THE WATERFRONT AREA.

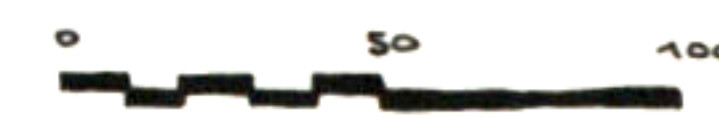
IT FILLS ONE OF THE FEW LEFT OVER SPACES IN THE GRID, WHICH SO FAR HAS BEEN DEVELOPED TO THE POINT THAT ITS OWN FORM AND CHARACTER ARE PRETTY MUCH DETERMINED.

THE BUILDING IS LOCATED BETWEEN AN APARTMENT BUILDING AND A THREE STORY HOUSE. IT IS ABOUT 30 FEET LONG AND 30 TO 40 FEET WIDE.

ON THE GROUND FLOOR THERE IS A BIG ROOM FOR MARTIAL ARTS AND THE ENTRANCE TO THE TWO STORY FAMILY HOUSE ABOVE.



SITE PLAN



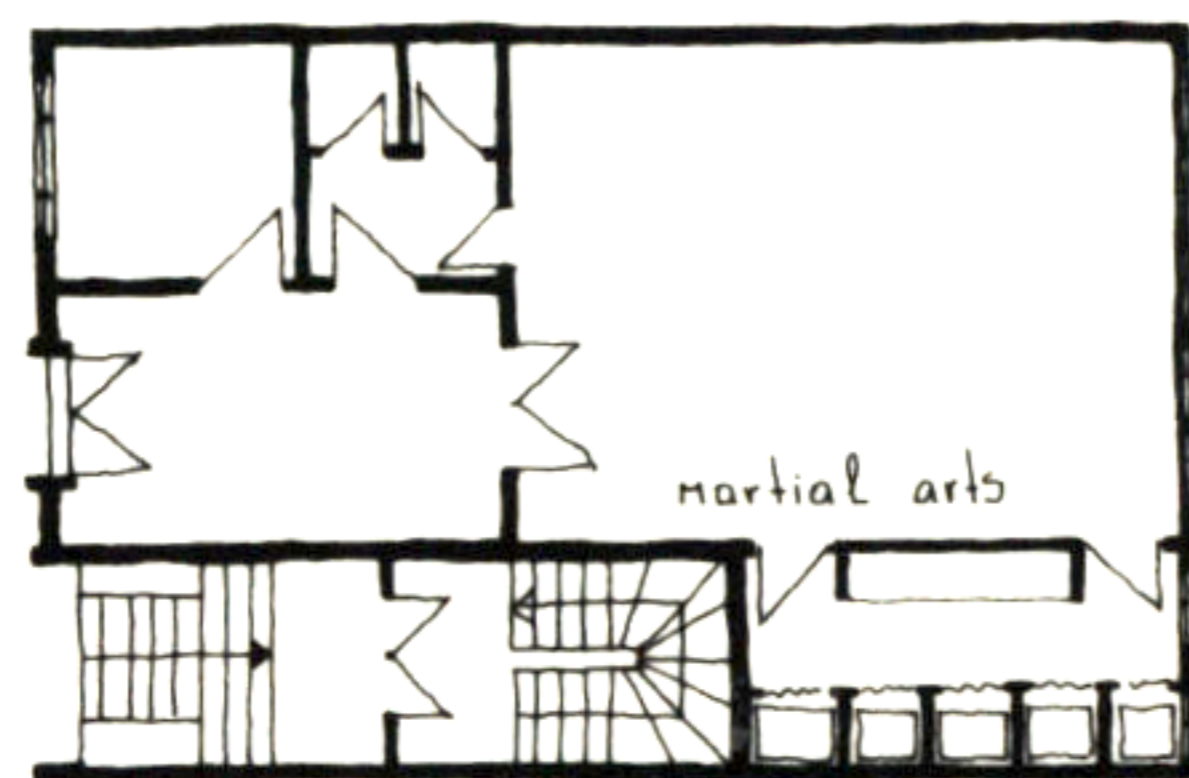
81.MARTIAL ARTS AND HOUSE



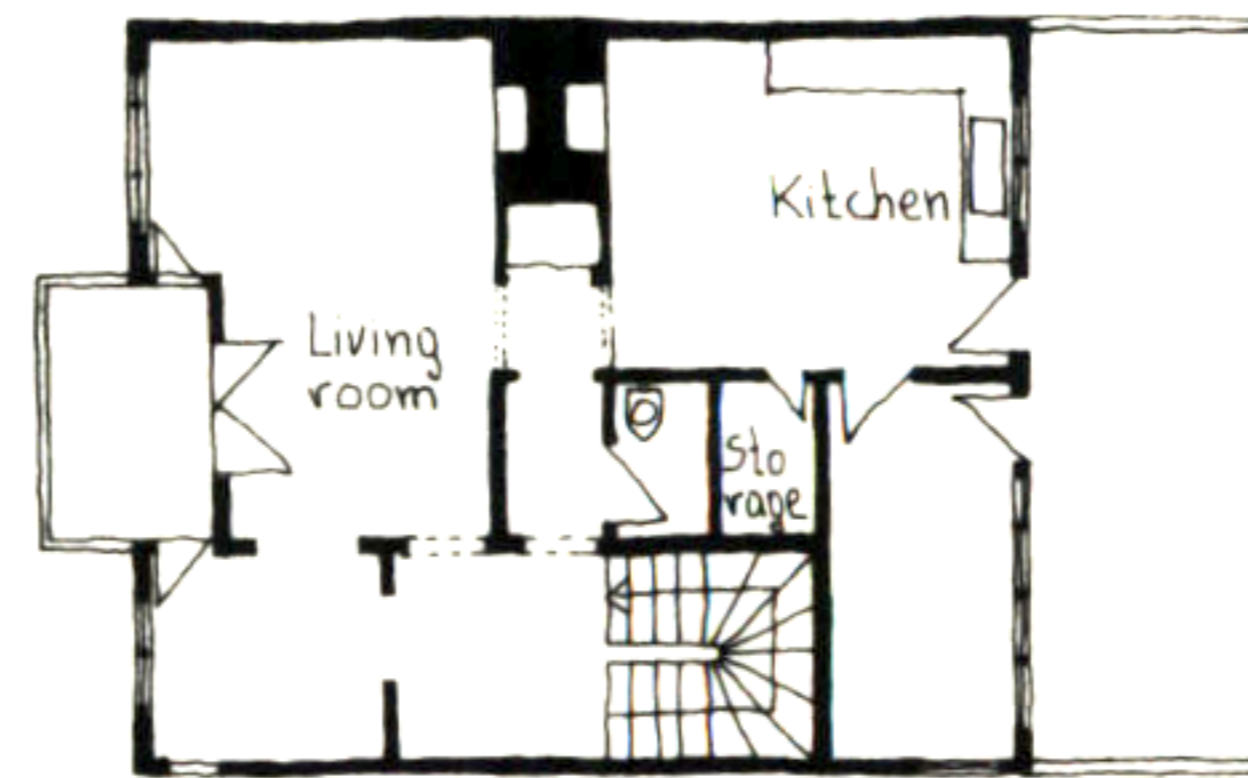
NORTH-WEST ELEVATION



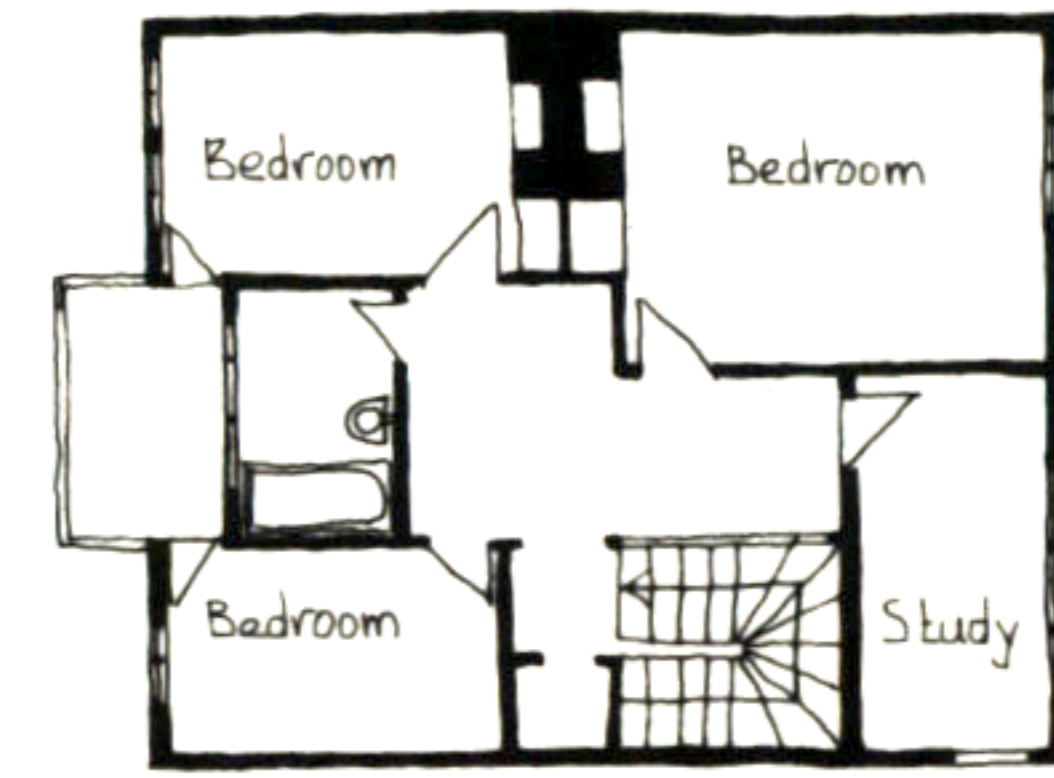
SOUTH-EAST ELEVATION



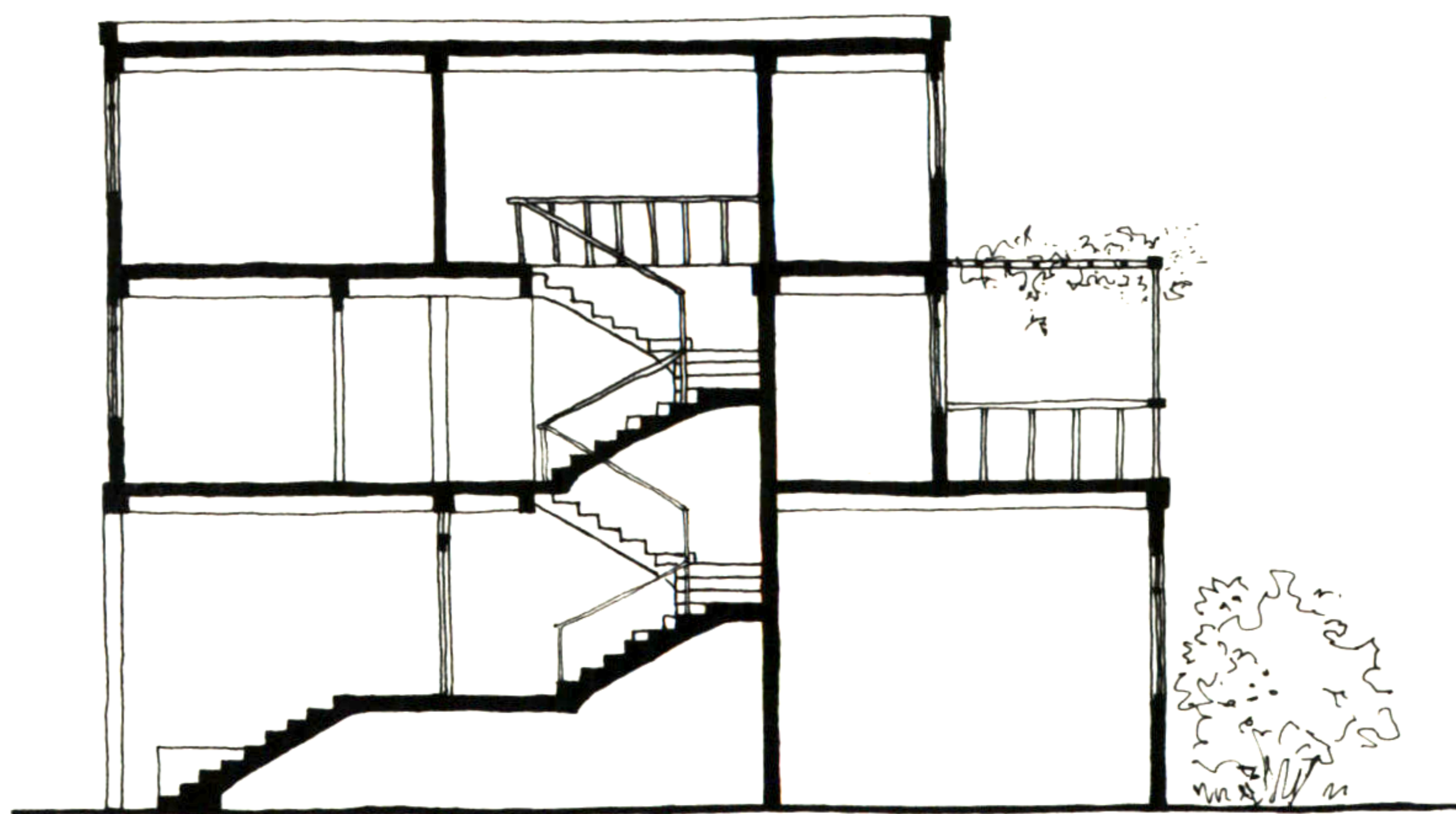
GROUND FLOOR PLAN



SECOND FLOOR PLAN



THIRD FLOOR PLAN



SECTION a-a

