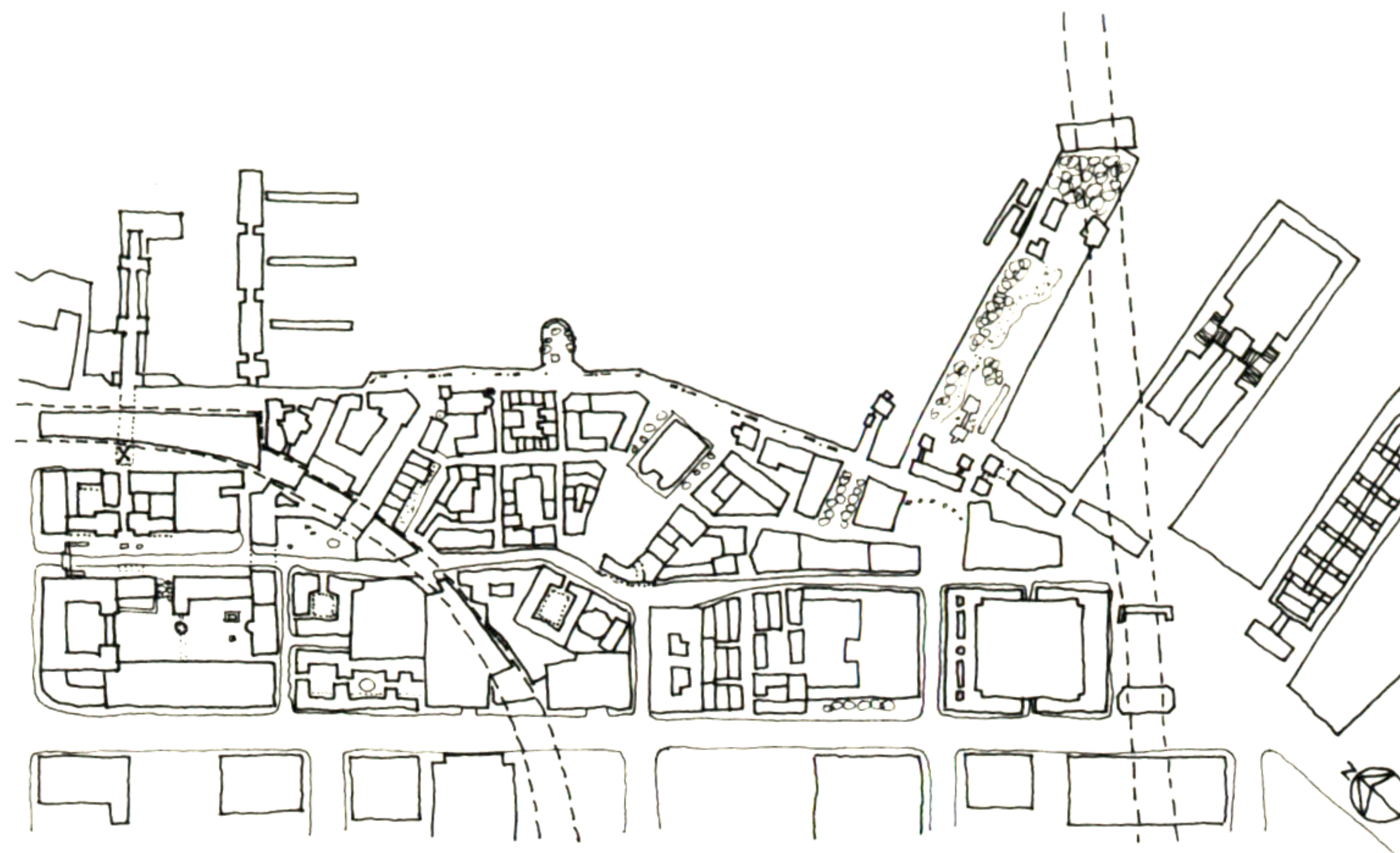


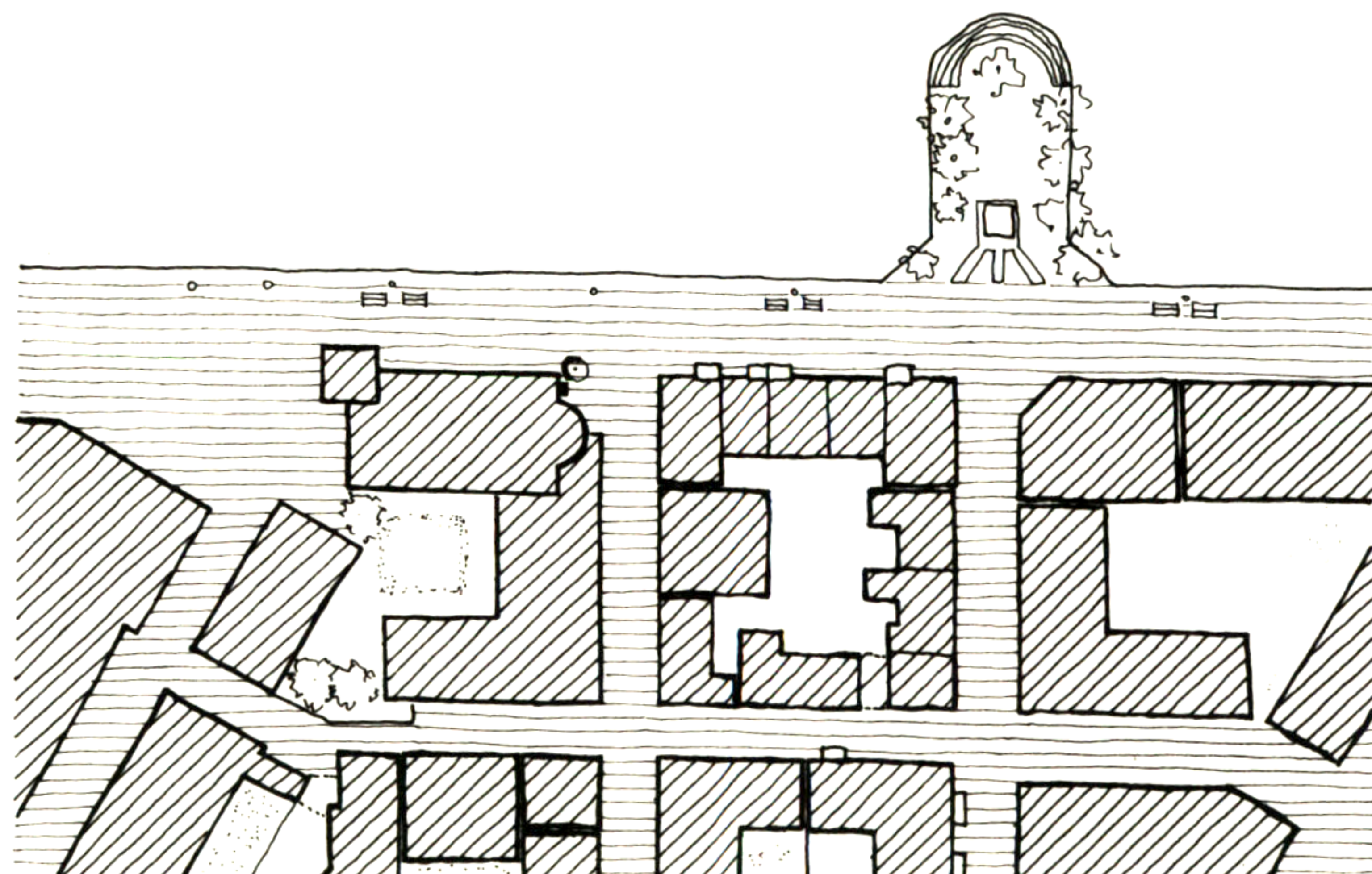
84. FOUNTAIN



AT THE BACK SIDE OF THE CHURCH, AT THE POINT WHERE THE PEDESTRIAN PATH MEETS THE PROMENADE ALONG THE WATER, A VERY SMALL INTIMATE PLACE BETWEEN THE CHURCH AND THE ROW OF HOUSES HAS ALREADY BEEN CREATED.

I FELT THAT SOMETHING WAS NEEDED THERE, THAT COULD BRING THE PEOPLE AT THAT PLACE.

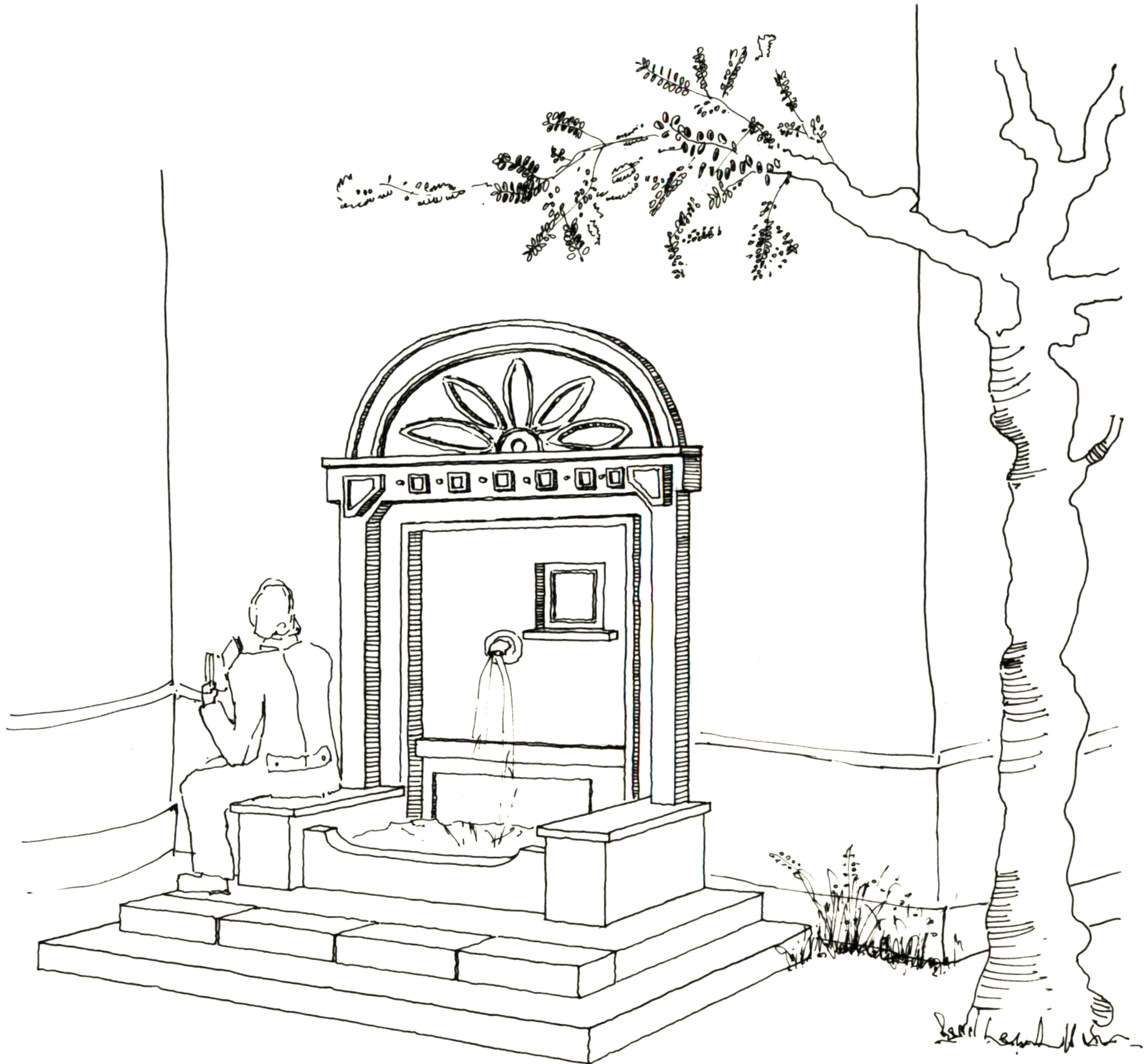
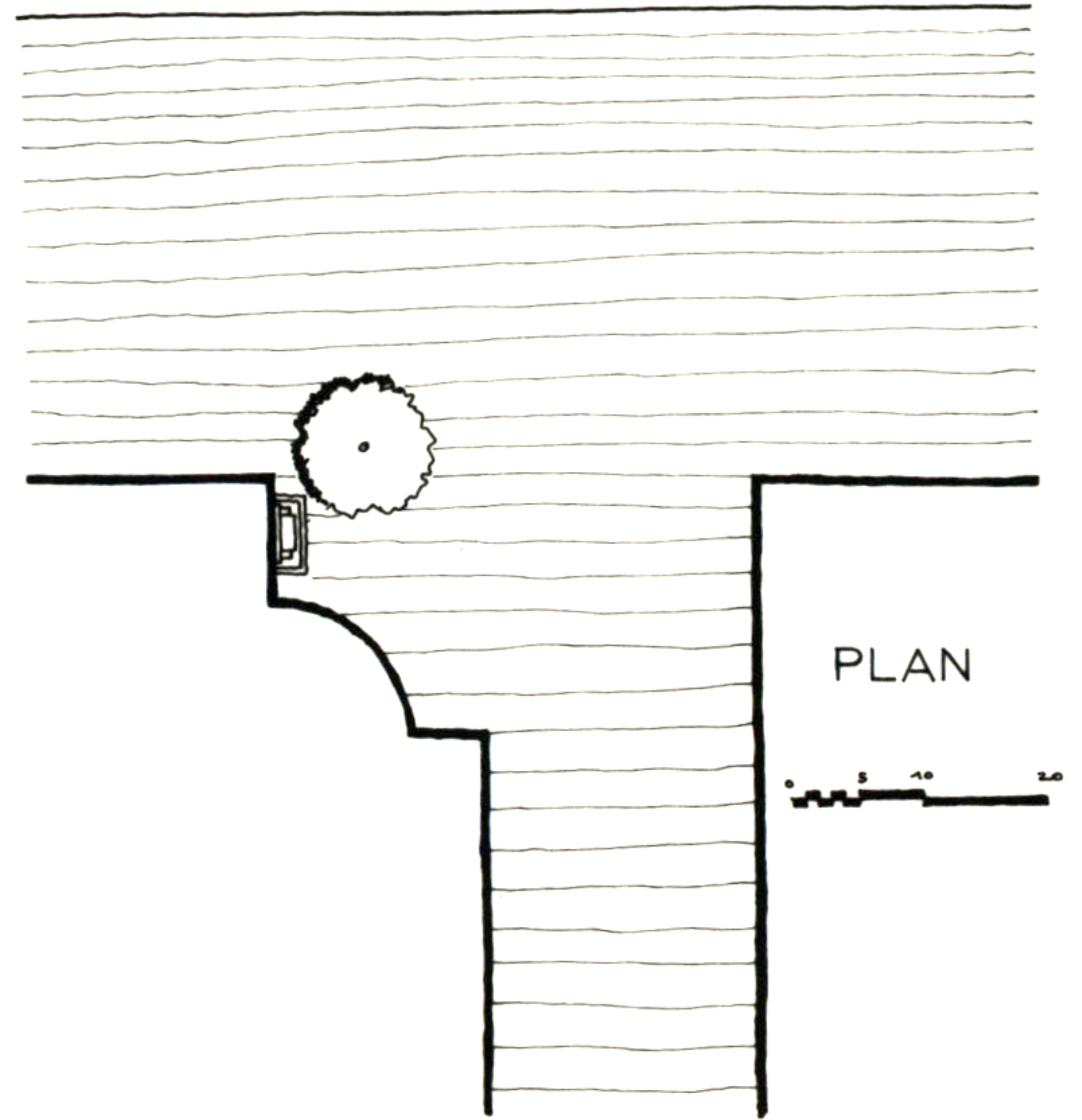
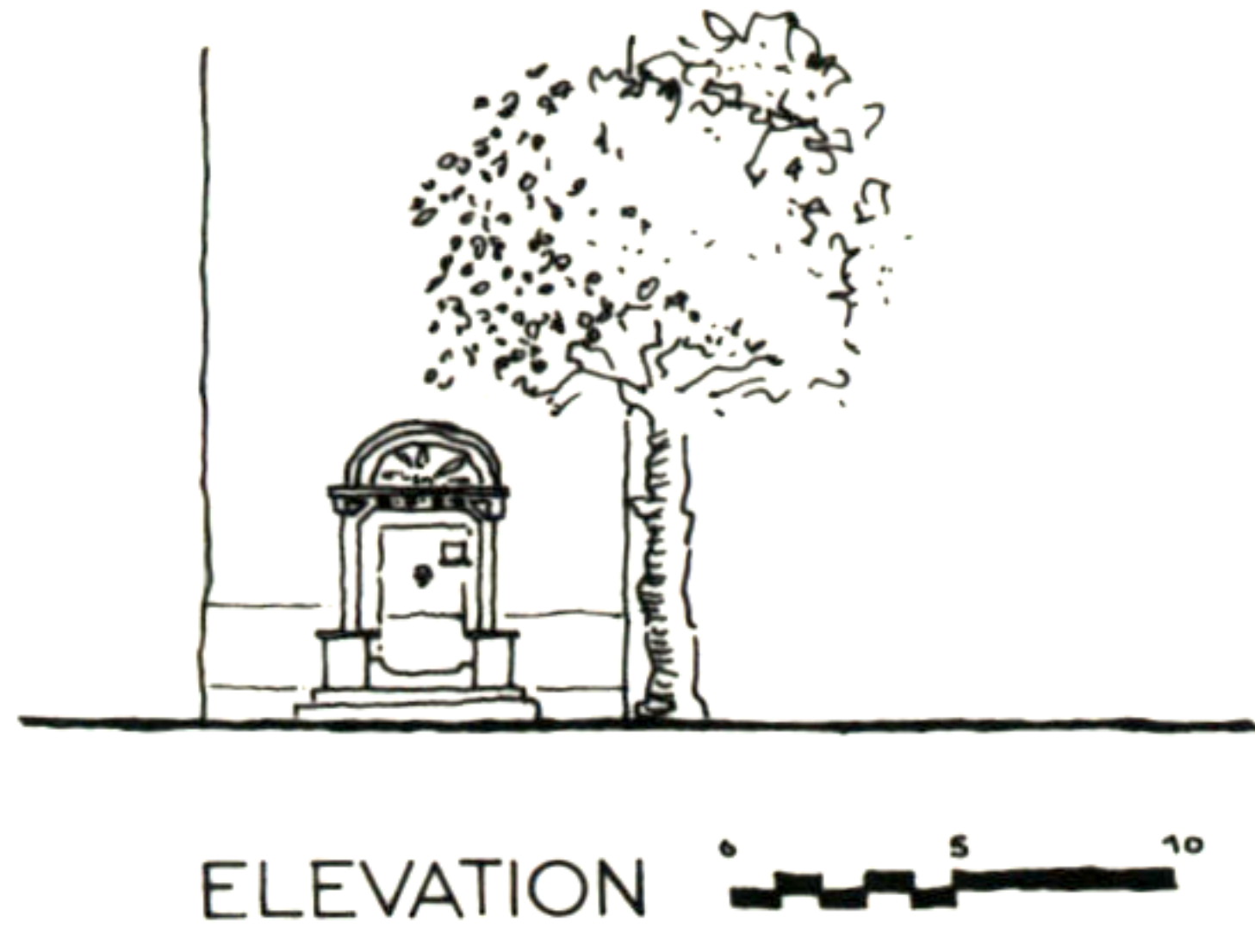
I IMAGINED A SMALL DRINKING FOUNTAIN AGAINST THE BACK WALL OF THE CHURCH AND A STONE SEAT NEARBY, BOTH OF THEM UNDER THE SHADOW OF A BIG OLIVE TREE.



SITE PLAN



84. FOUNTAIN



Artemis Anninou