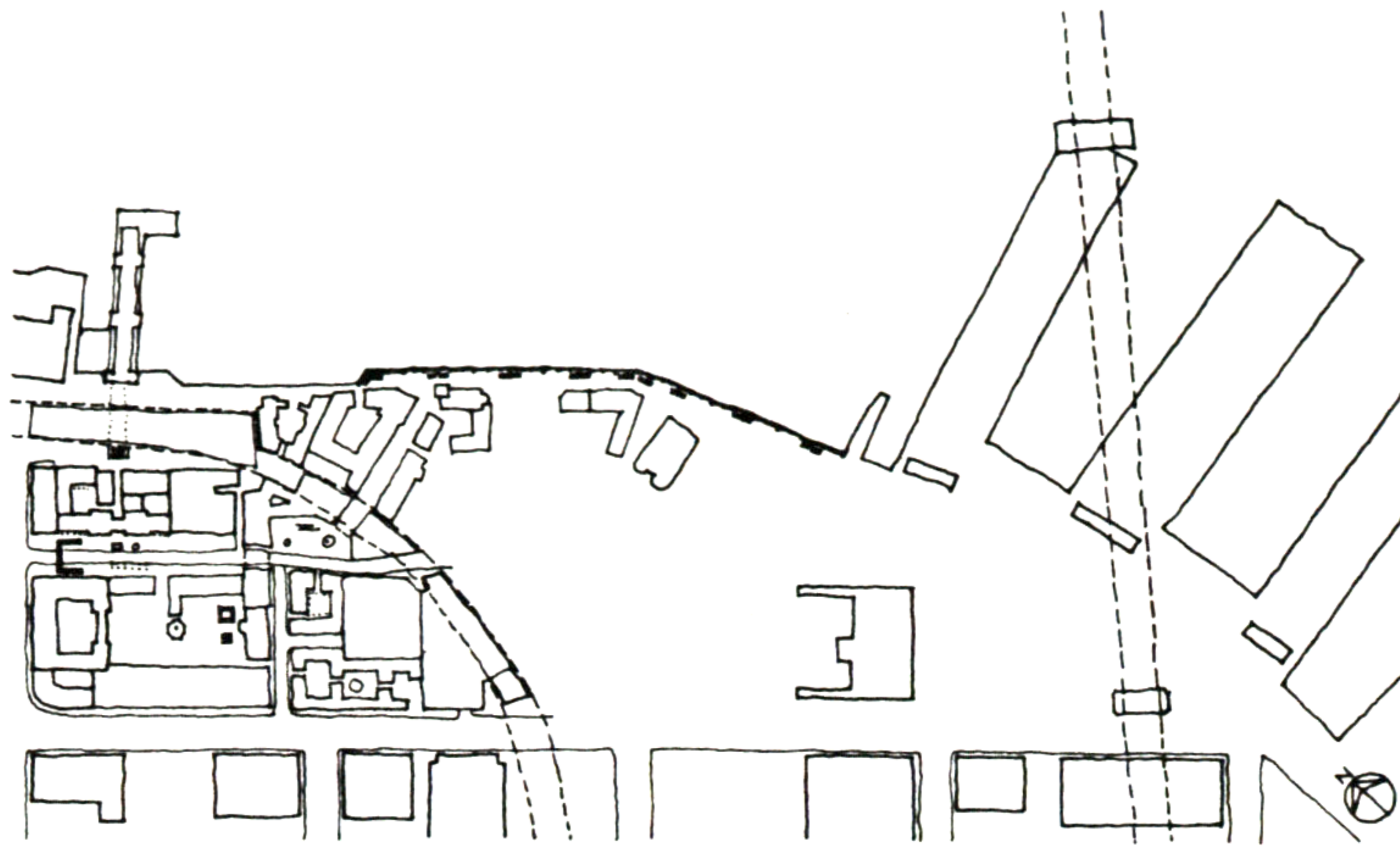


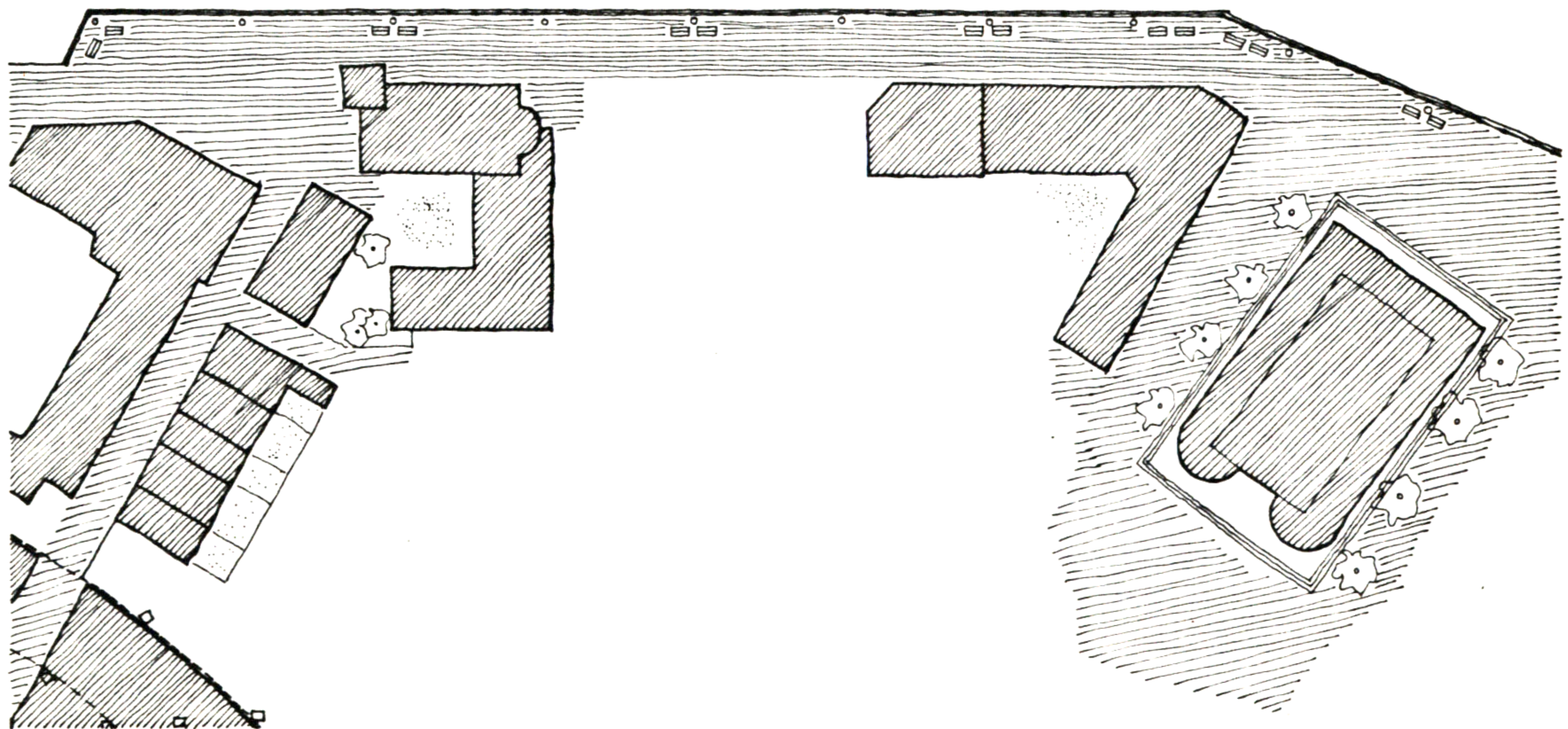
## 27. HANDRAIL & BENCHES



I PROPOSE HANDRAIL AND BENCHES AT ONE SIDE (WATER SIDE) OF THE PEDESTRIAN STREET ALONG THE WATERFRONT.

THE HANDRAIL IS NEEDED TO PROTECT PEDESTRIANS FROM FALLING DOWN TO THE WATER. ALSO, IT WILL STRENGTHEN THE PEDESTRIAN STREET GIVING CONTINUOUS FEELING BY REPETITION OF SMALL ELEMENT IN A SIMPLE FASHION.

BENCHES WILL HELP THE PEDESTRIAN STREET TO BE A PLACE TO BE, NOT JUST TO PASS THROUGH. THEY ARE TWO SIDED FOR BOTH THE WATER AND THE STREET TO LET PEOPLE SIT AND ENJOY EITHER LOOKING AT THE WATER OR LOOKING AT THE PEOPLE ON THE STREET. TWO BENCHES ARE PLACED UNDER EVERY OTHER STREET LIGHTS ABOUT 8 FEET INSIDE FROM THE HANDRAIL FOR SOME SPACE BETWEEN HANDRAIL AND BENCHES.



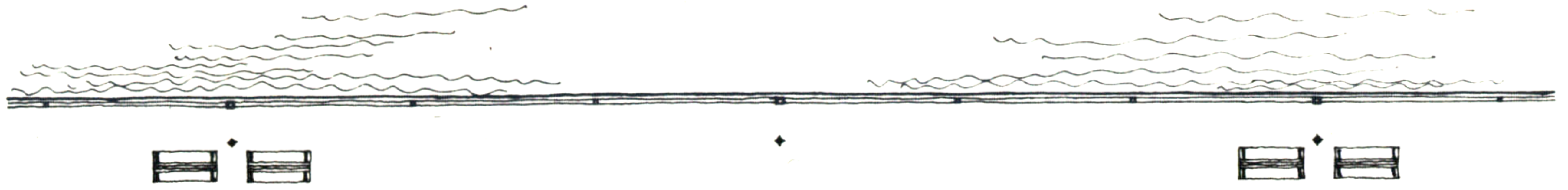
SITE PLAN

0 50 100 FT.

HyeMyoung Kim

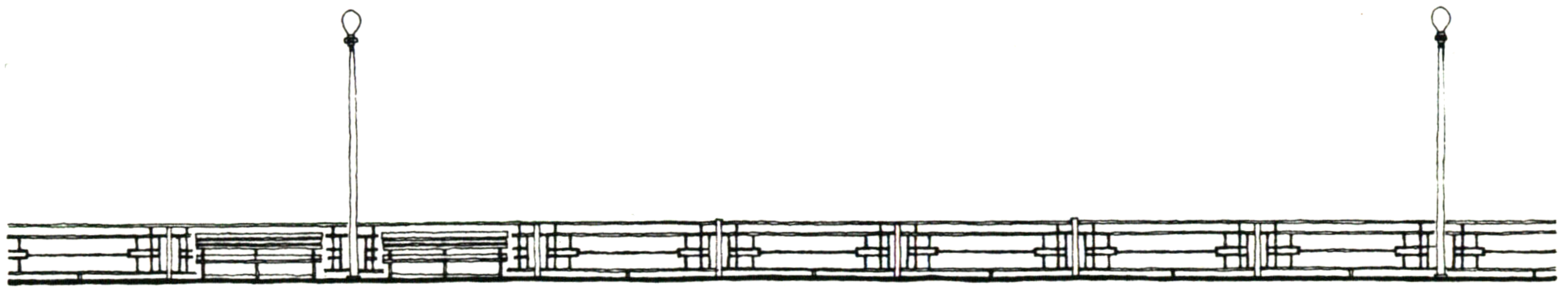


# 27. HANDRAIL & BENCHES



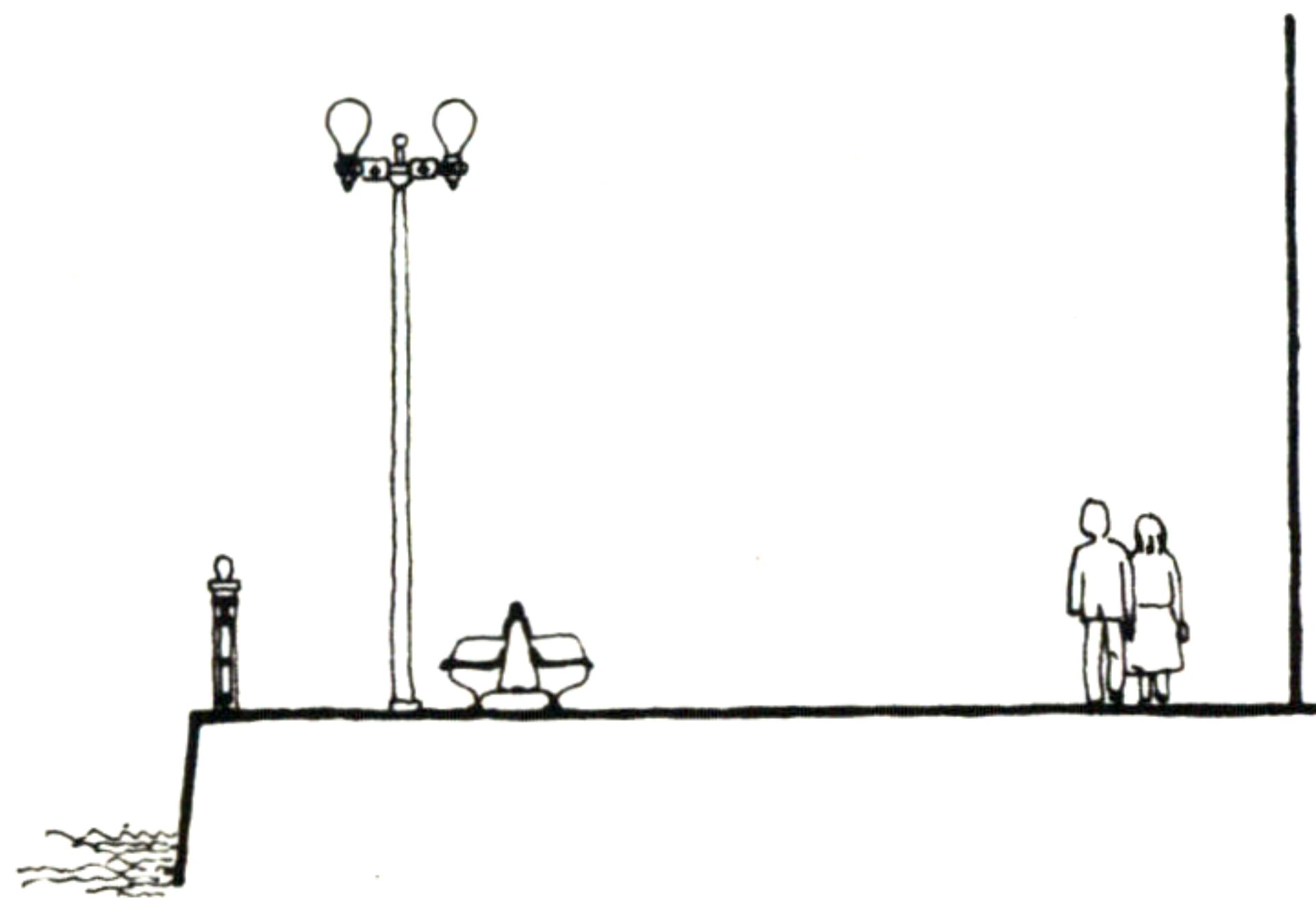
PLAN

0 5 10 20 FT.



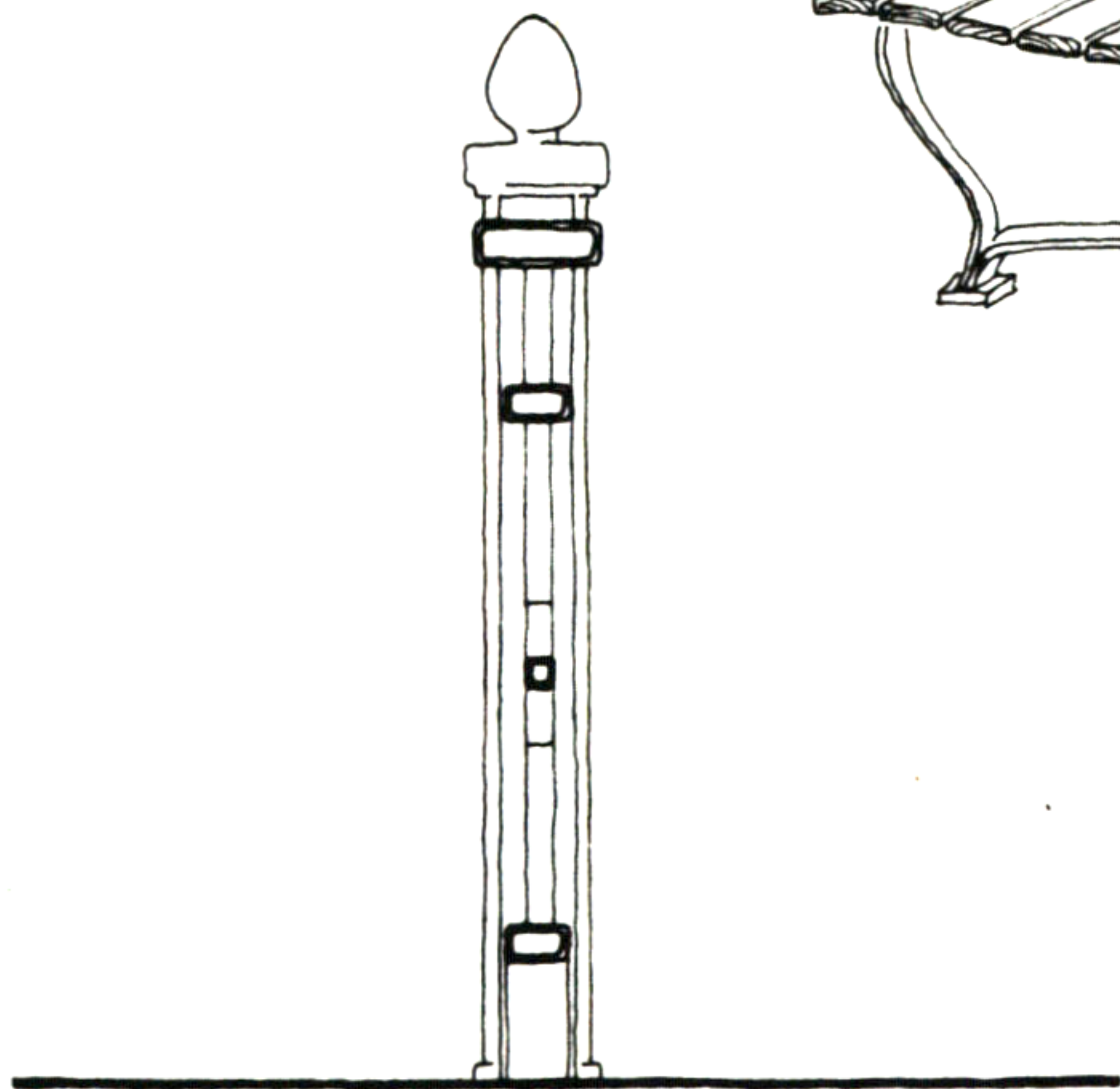
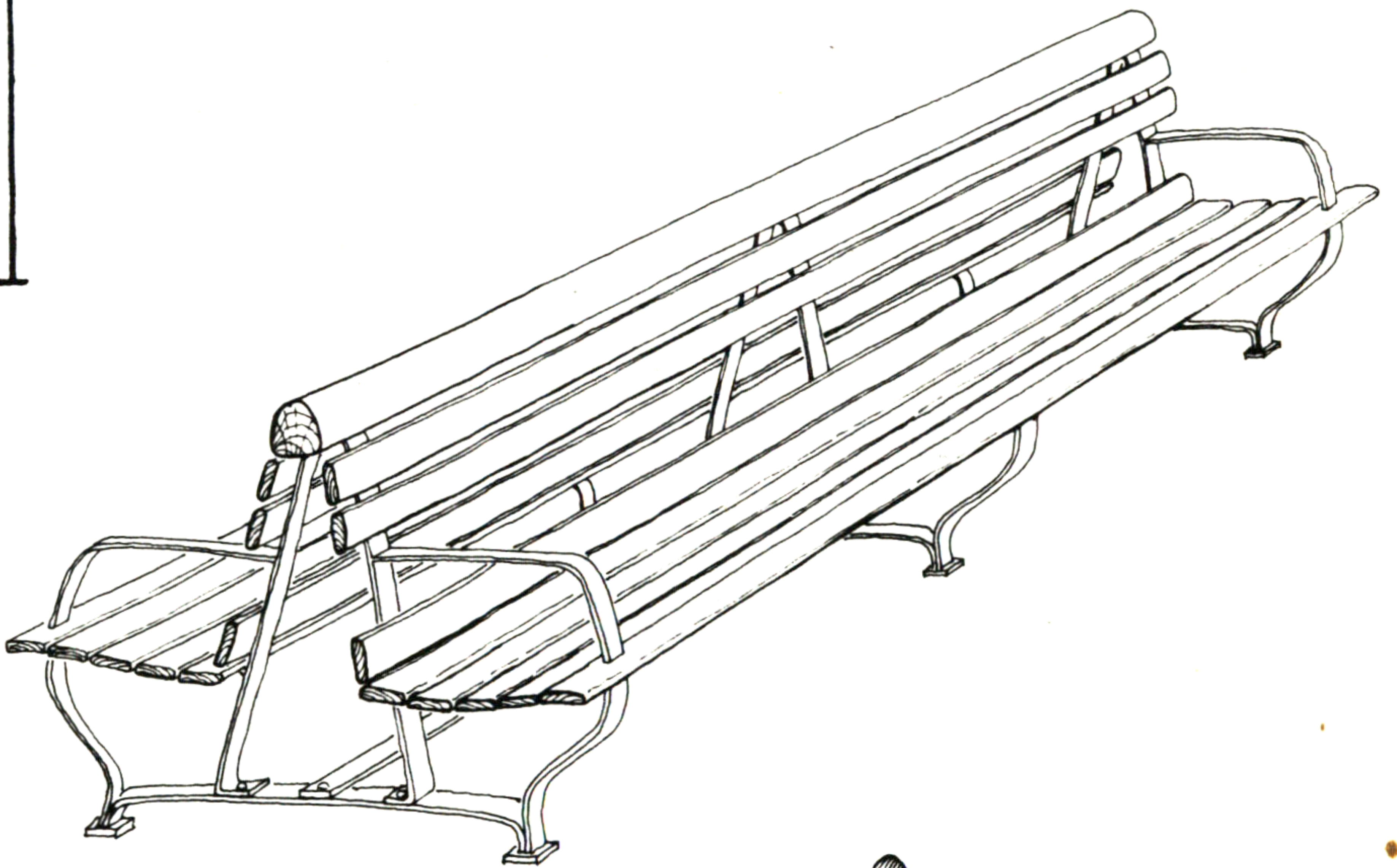
ELEVATION

0 1 5 10 FT.



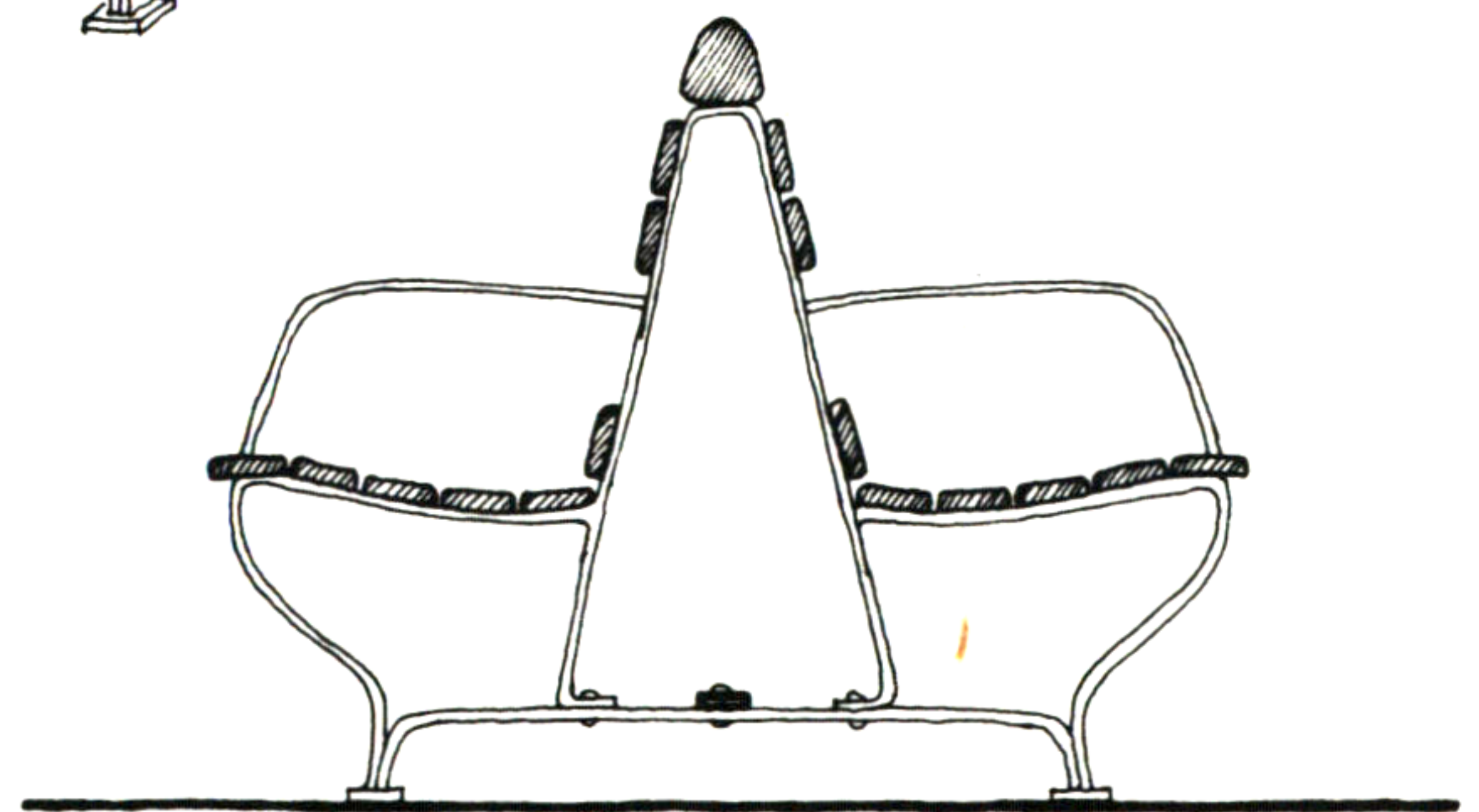
SECTION

0 1 5 10 FT.



HANDRAIL SECTION

0 1 FT.



BENCH SECTION

0 1 FT.

HyeMyoung Kim