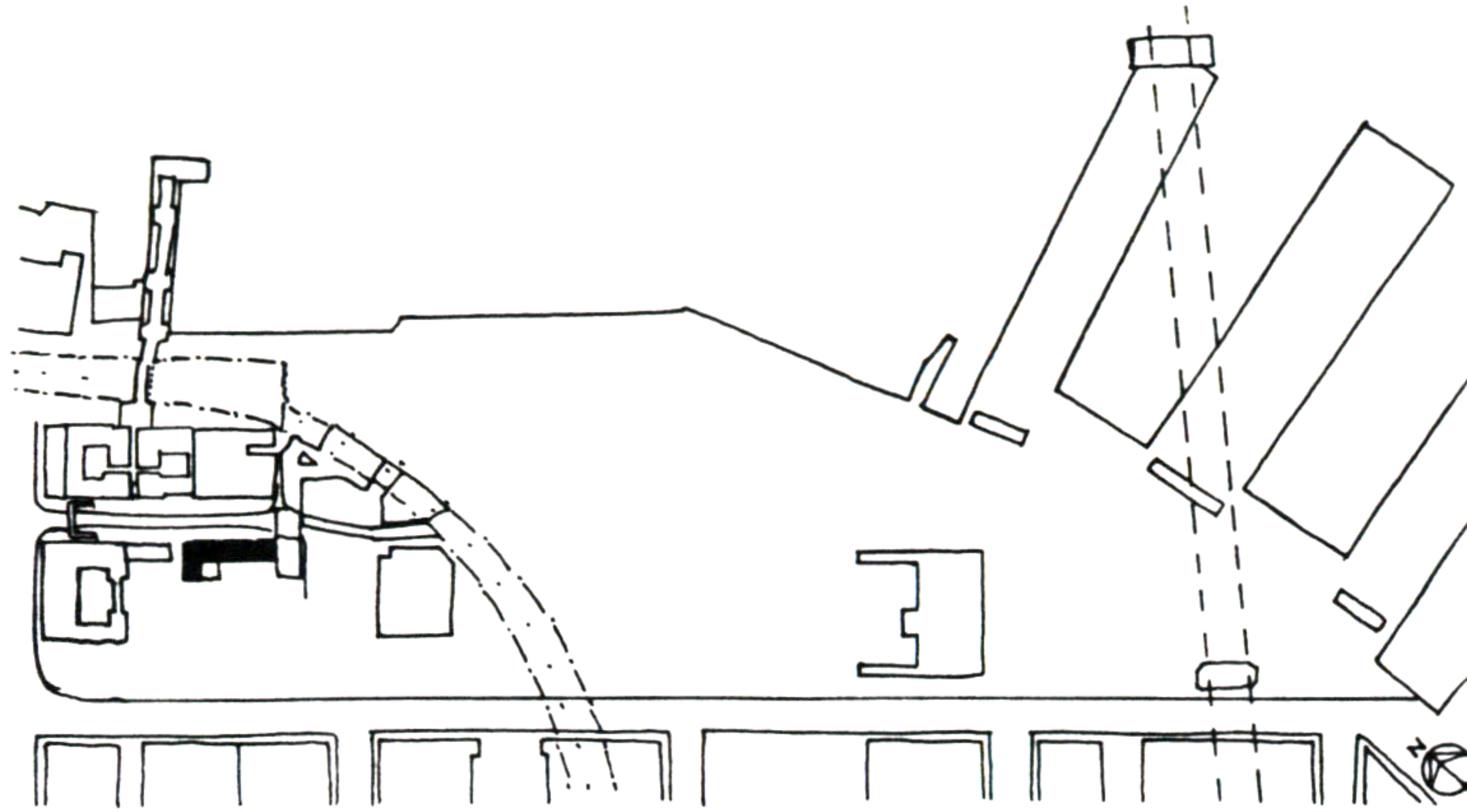
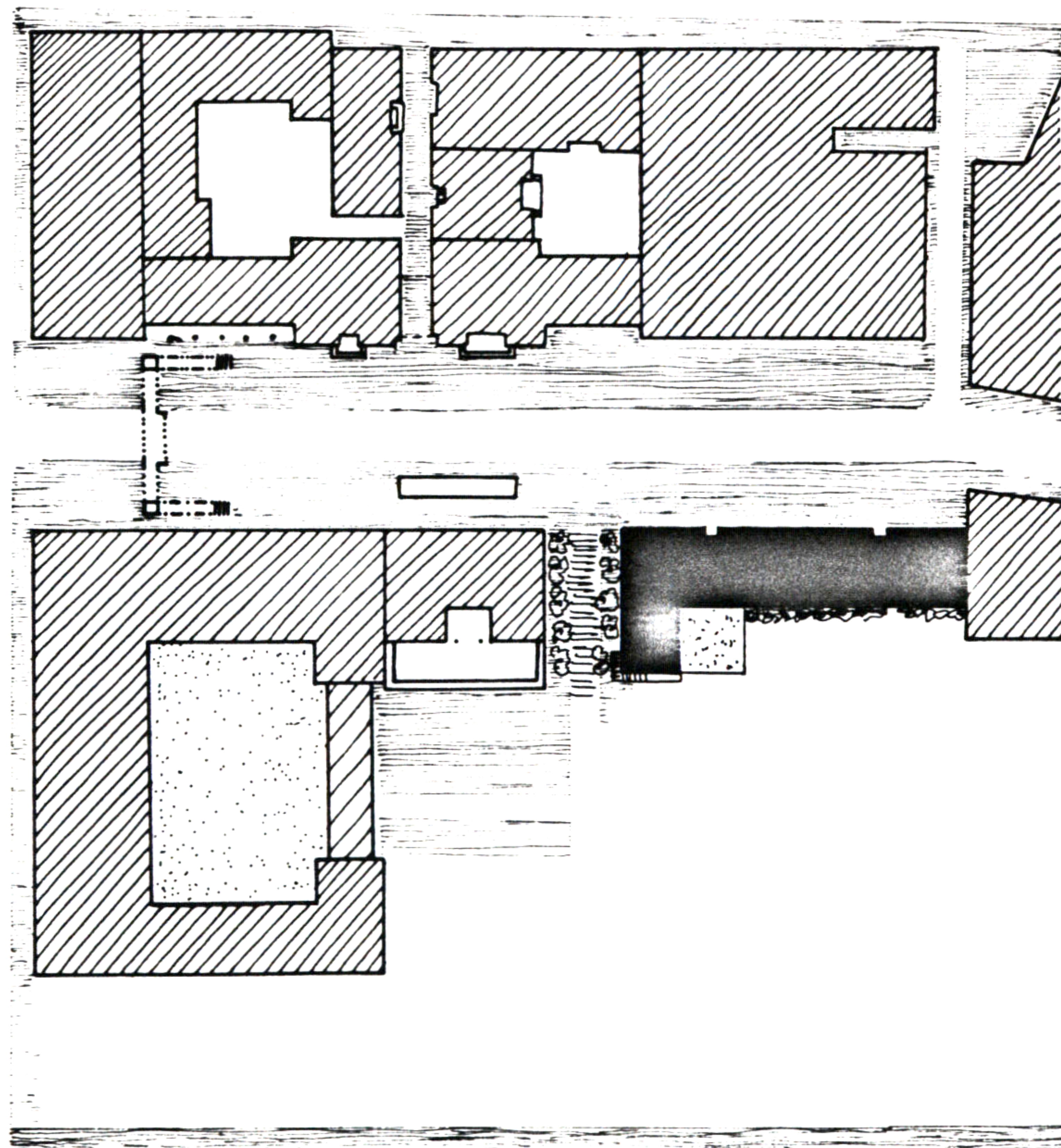


## 7. APARTMENT BUILDING



WALKING THROUGH THE GATE ALONGSIDE THE HOTEL, AFTER PASSING THE CAFE, ONE SEES AN APARTMENT BUILDING FOUR STORIES HIGH WITH A MAIN ENTRANCE TO THE STREET. ON THE FIRST FLOOR THERE ARE SMALL SHOPS SUCH AS A BOOKSTORE, A FLOWER SHOP, AND A SMALL ARTIST WORKSHOP. THROUGH THE LOBBY OF THE BUILDING ONE CATCHES A GLIMPSE OF THE GARDEN BEYOND. THE BUILDING FACES THE GARDEN ON ONE SIDE AND THE STREET ON THE OTHER. IT IS APPROXIMATELY 150 FEET LONG BY 35 FEET WIDE, AND TOUCHES THE COMMUNITY BUILDING ON ONE SIDE. THE APARTMENTS ARE 1 & 2 BEDROOM AND LIVING-WORKING STUDIOS. SOME BALCONIES FACE THE STREET, OTHERS FACE THE GARDEN AND THE ROOF SPACE IS USED AS A ROOF GARDEN.

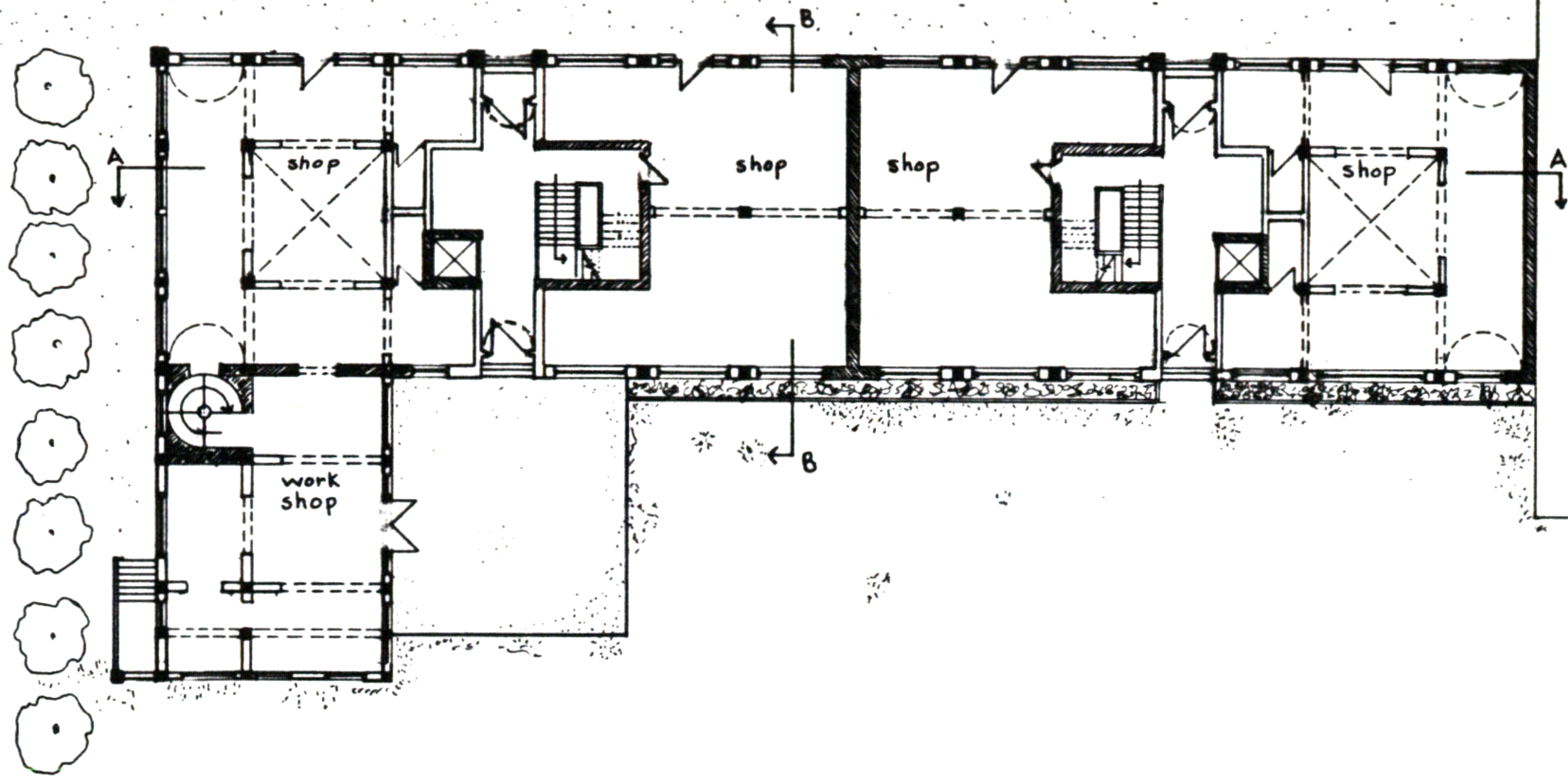


SITE PLAN

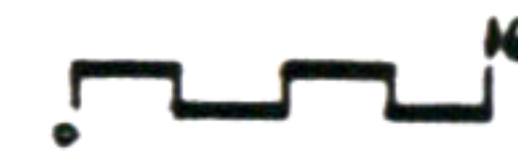
0 50 100

Ramzi Kawar

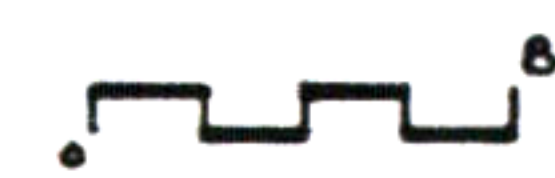
# 7. APARTMENT BUILDING



FIRST FLOOR PLAN

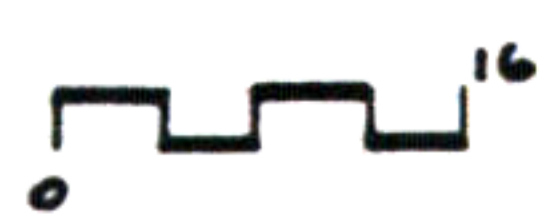
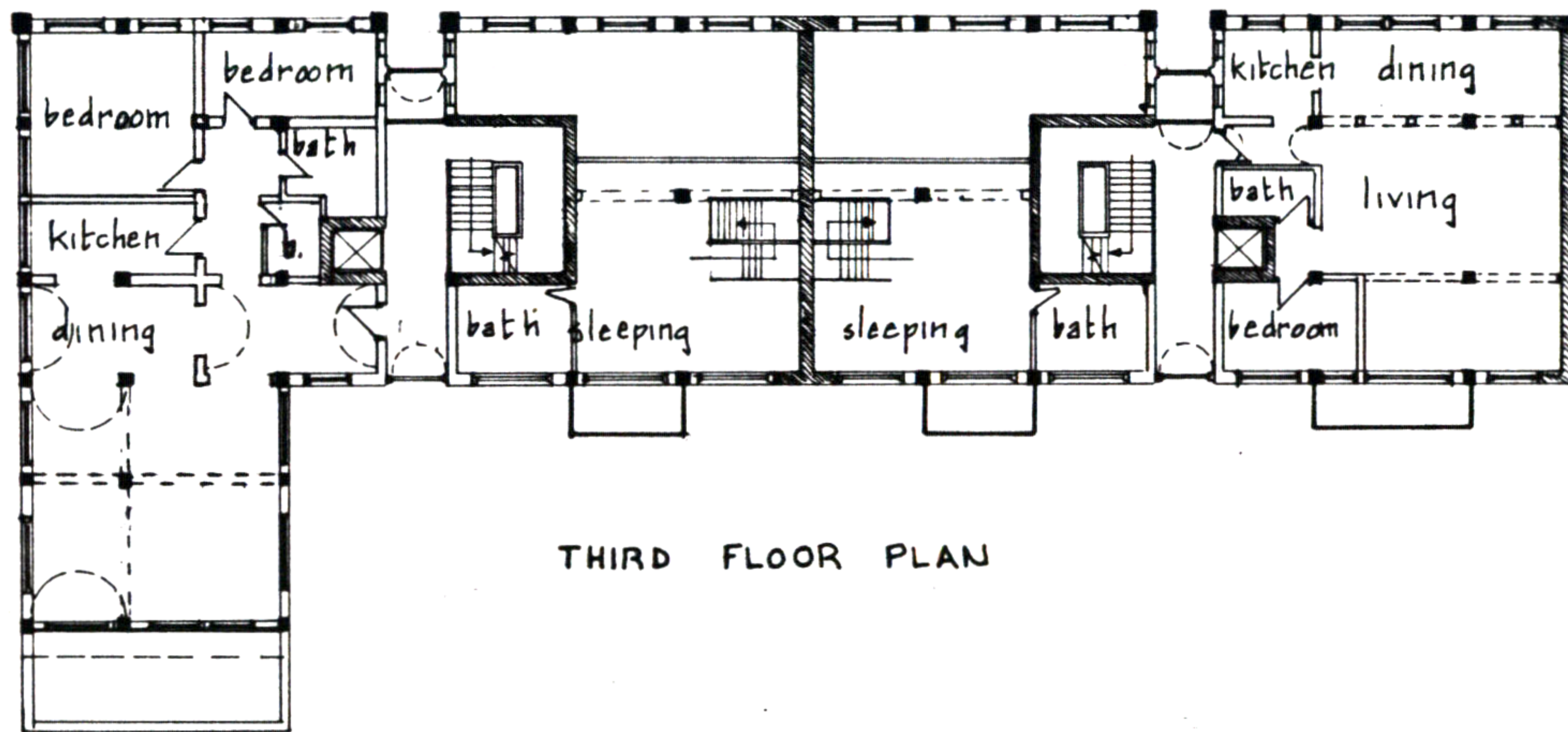
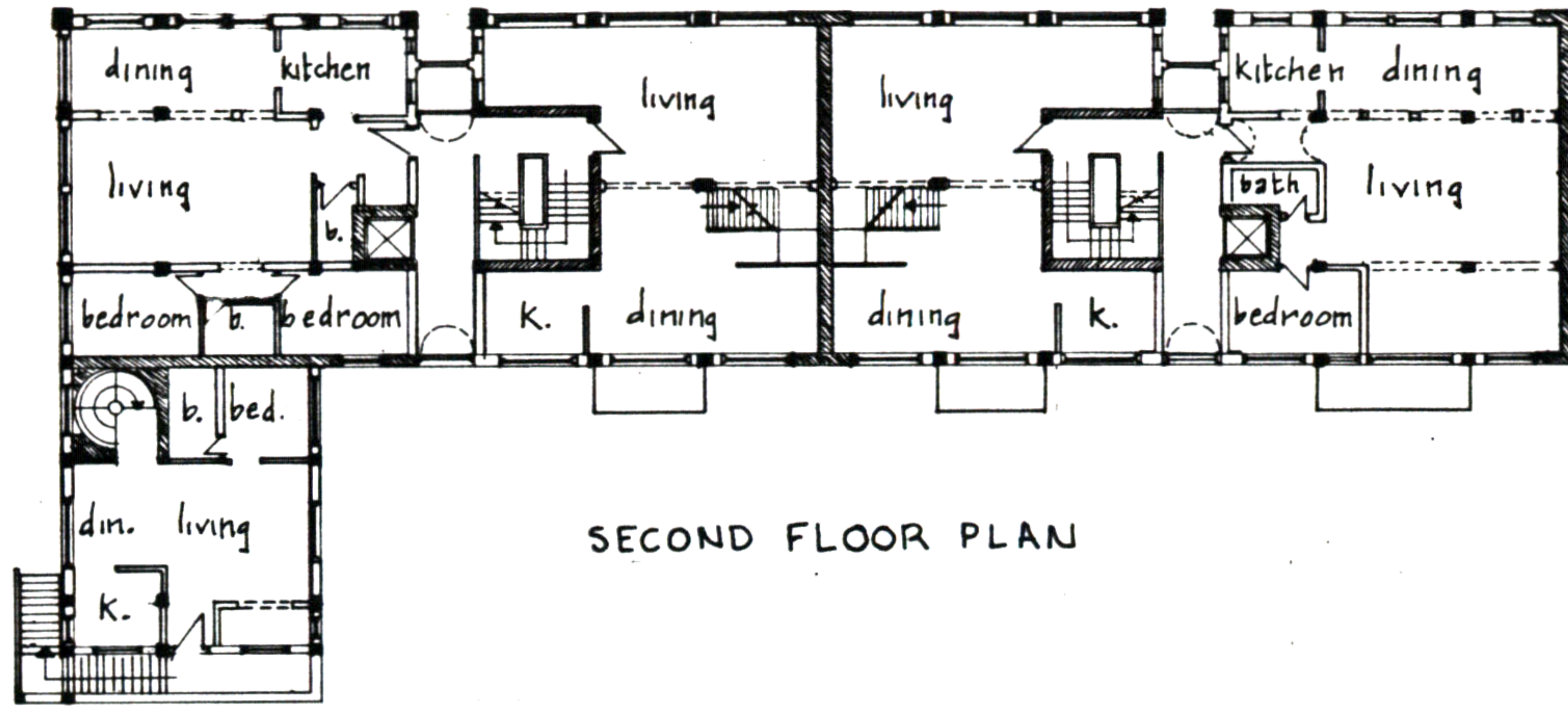


NORTH EAST ELEVATION



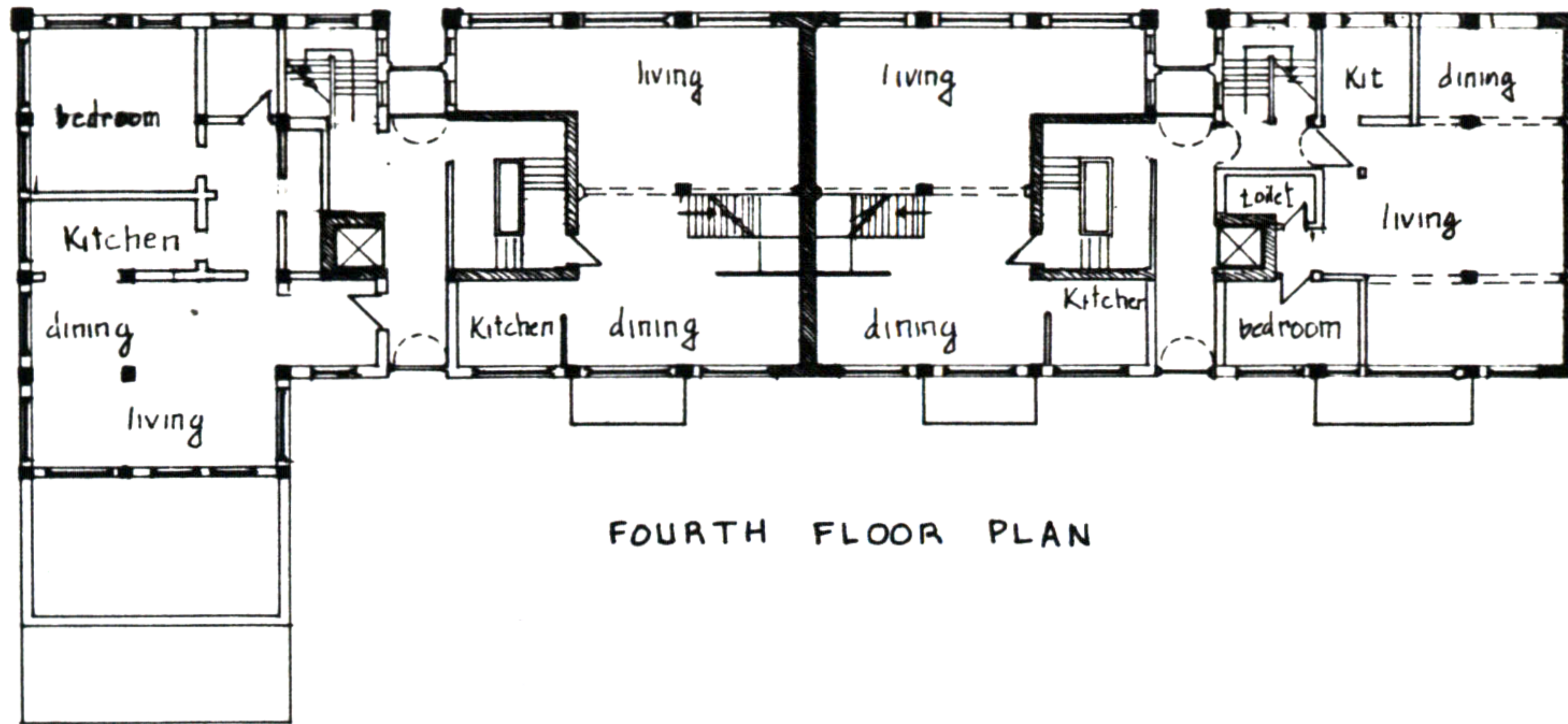
Ramzi Kwar

# 7. APARTMENT BUILDING

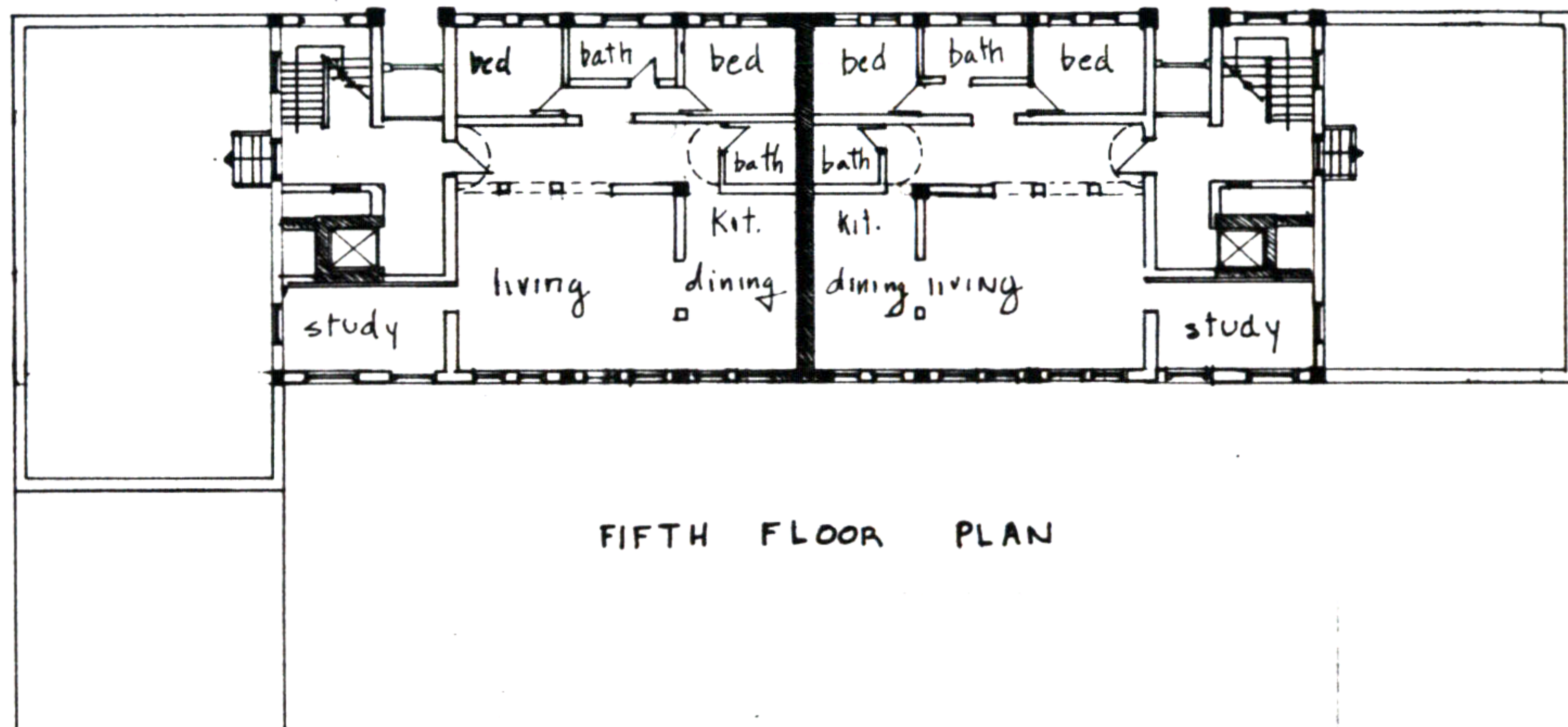


Ramzi Kavar

# 7. APARTMENT BUILDING



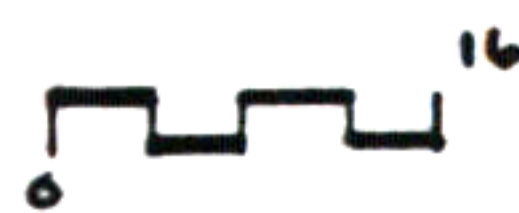
FOURTH FLOOR PLAN



FIFTH FLOOR PLAN

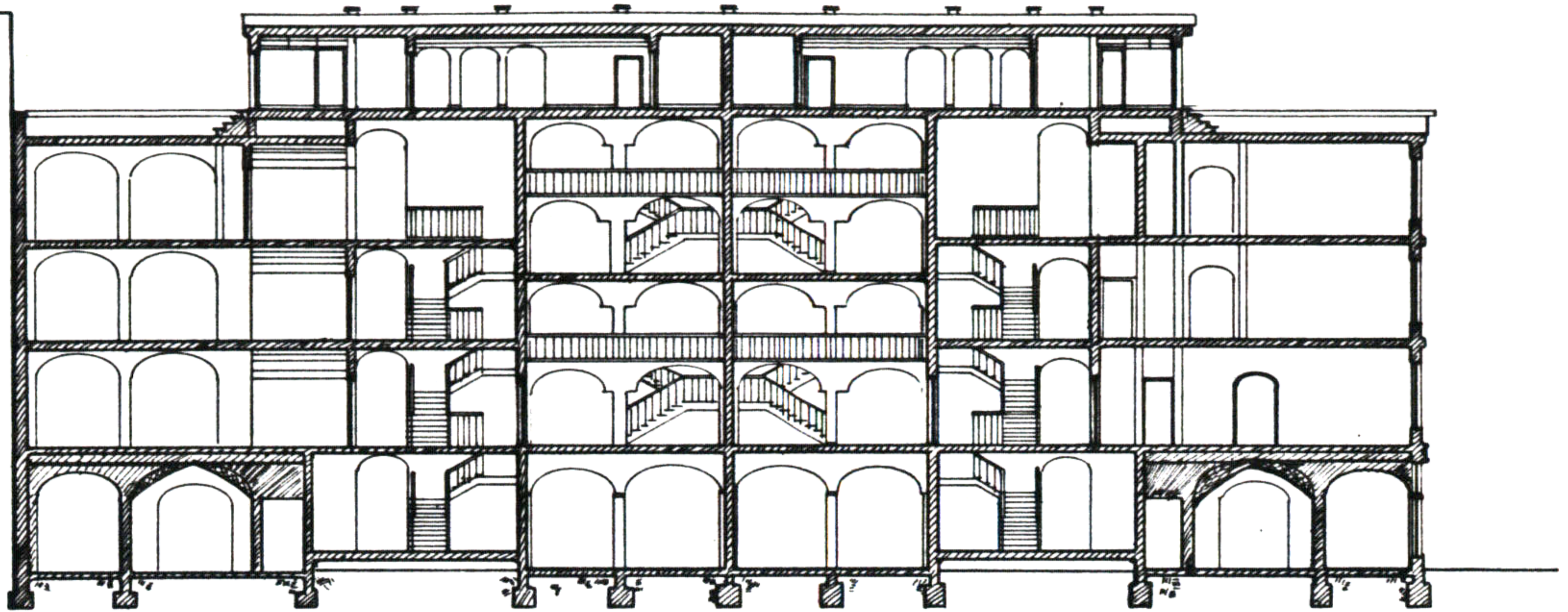


SOUTH WEST ELEVATION



Ramzi Kawar

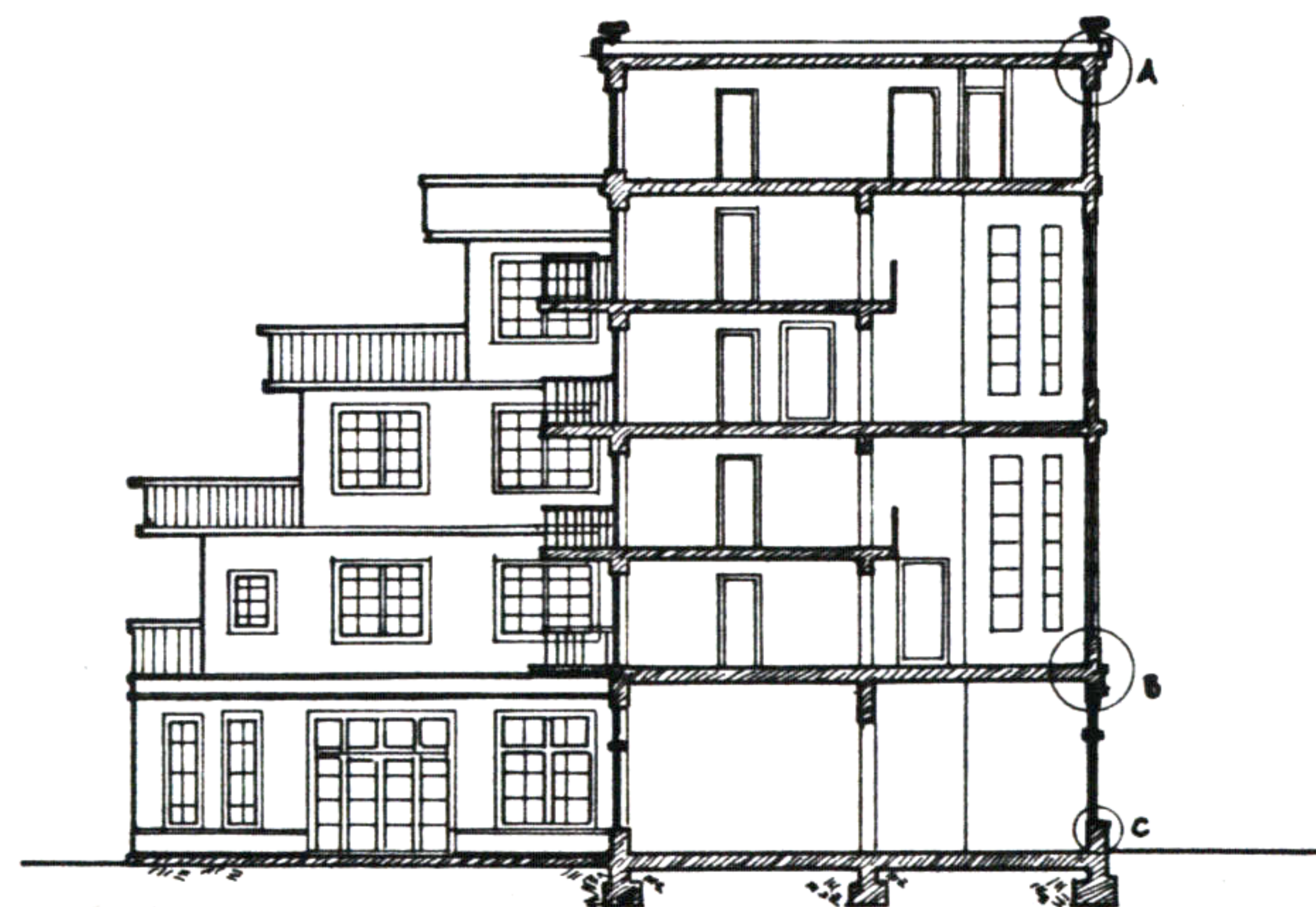
# 7. APARTMENT BUILDING



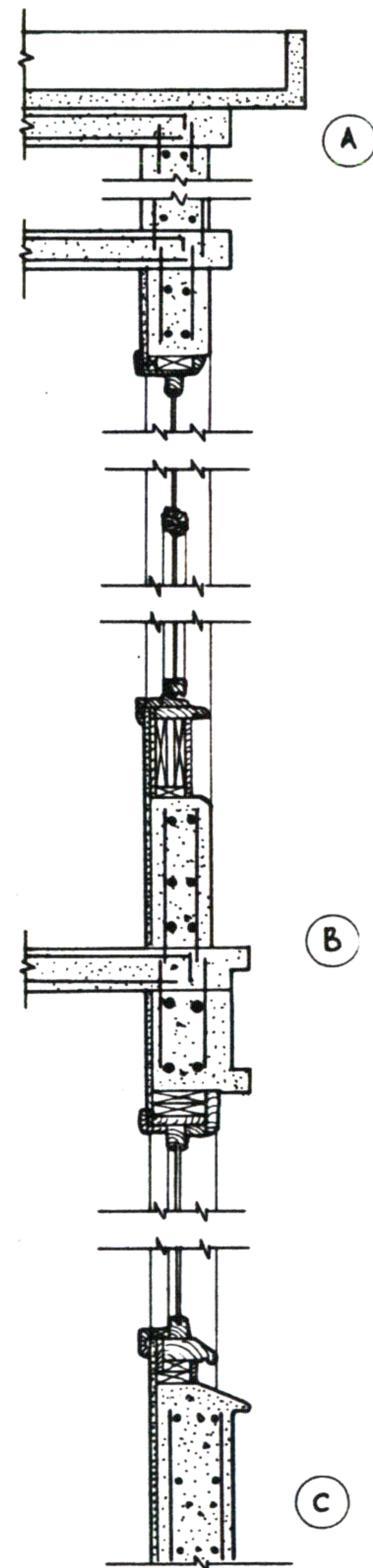
SECTION A-A



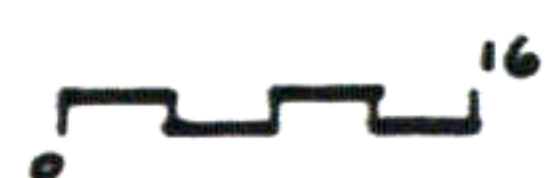
NORTH WEST ELEVATION



SECTION B-B



CONSTRUCTION DETAILS



Ramzi Kavar