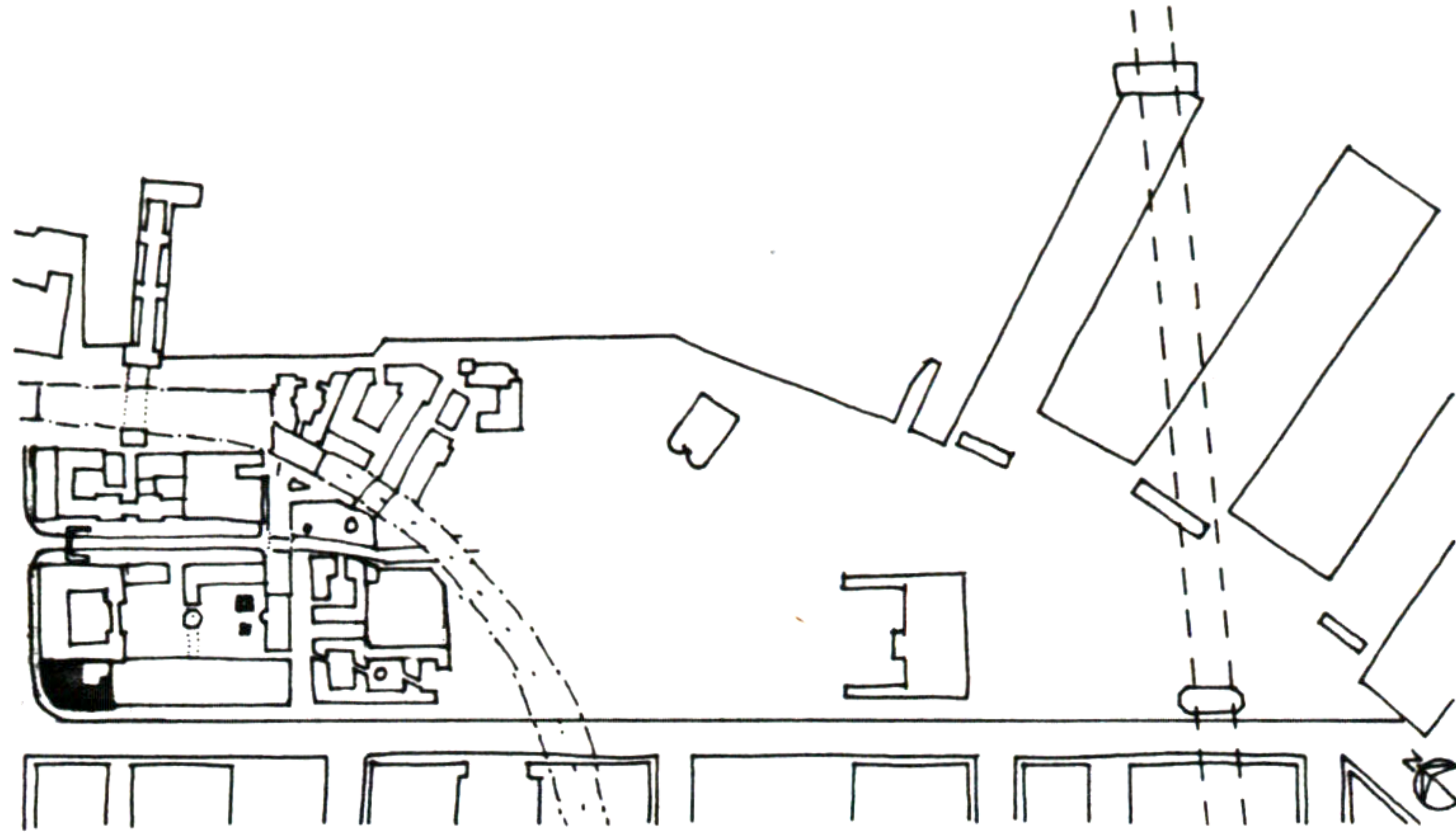
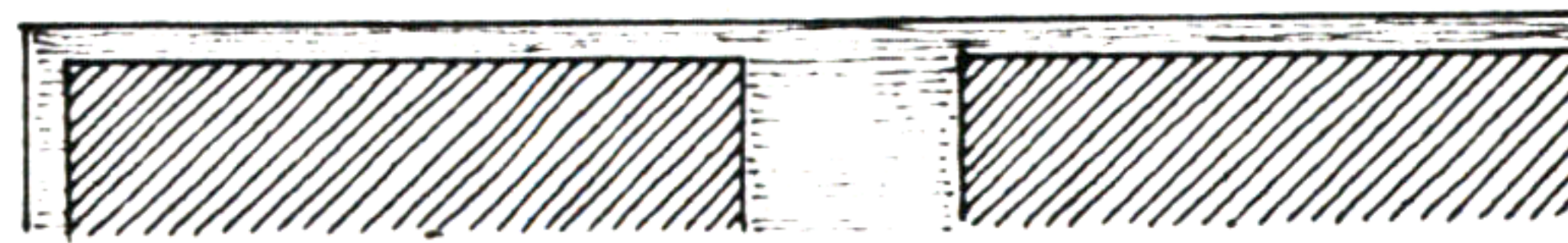
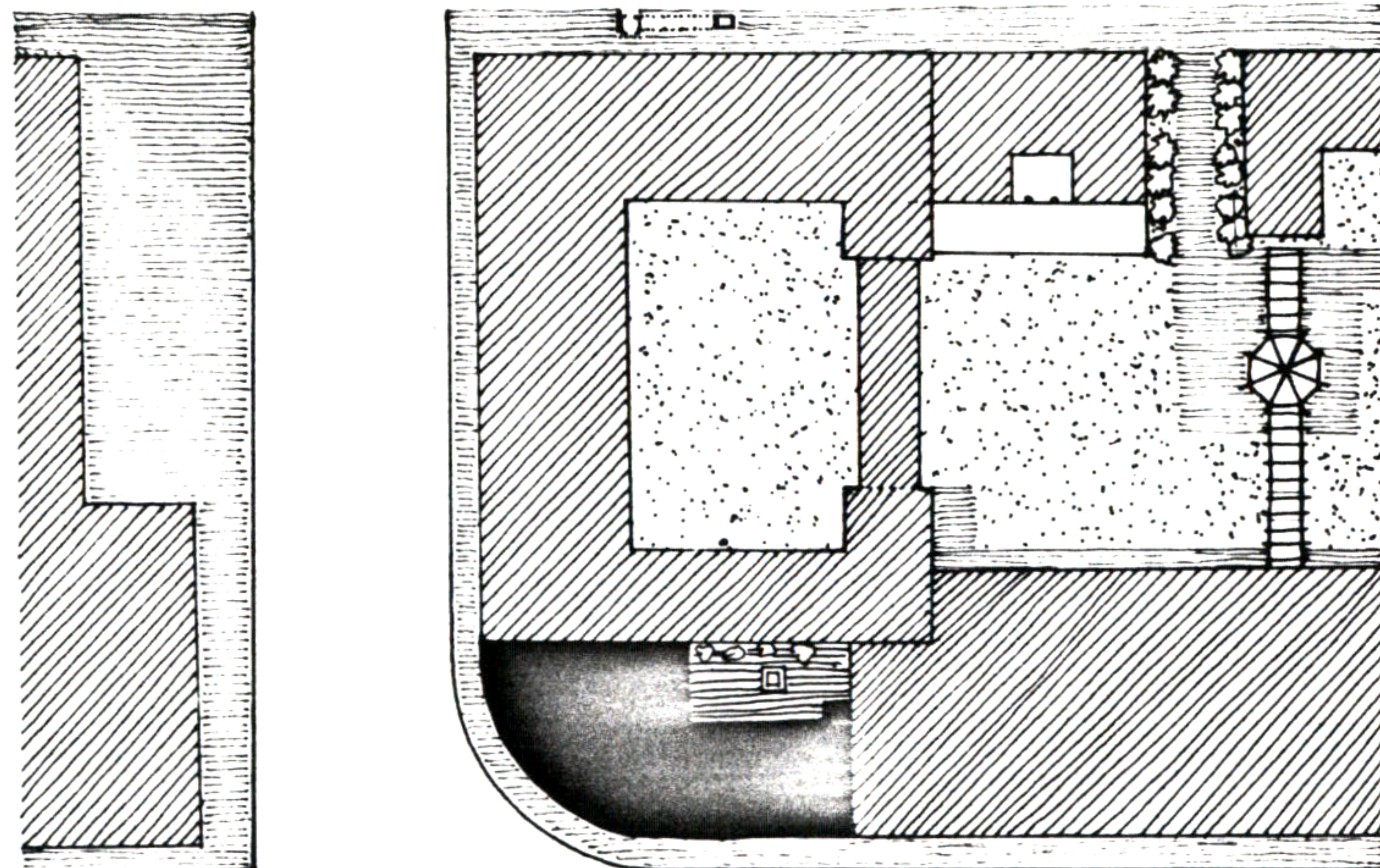


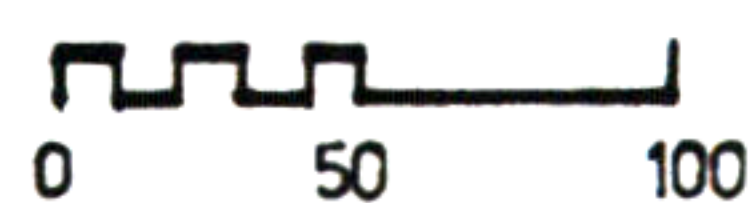
22. OFFICE BUILDING



THE PROPOSED PROJECT IS AN OFFICE BUILDING AT THE CORNER OF MISSION AND SPEAR STREETS. THE BUILDING IS SIX STORIES HIGH AND OCCUPIES THE SPACE BETWEEN THE HOTEL AND THE PARKING STRUCTURE. THE CORNER OF THE BUILDING IS CURVED TO EMPHASIZE THE MOVEMENT OF TRAFFIC FROM MISSION TO SPEAR STREET. THE WINGS OF THE BUILDING FORM AN L SHAPE FORMING A COURT IN THE BACK. THE MAIN ENTRANCE IS ON SPEAR STREET WITH A SIDE ENTRANCE ON MISSION. ON THE GROUND FLOOR, THERE IS A PUBLIC LOUNGE AND A SMALL RESTAURANT. THE COURTYARD IS ALSO PUBLIC WITH BENCHES AND SOME TREES.



SITE PLAN

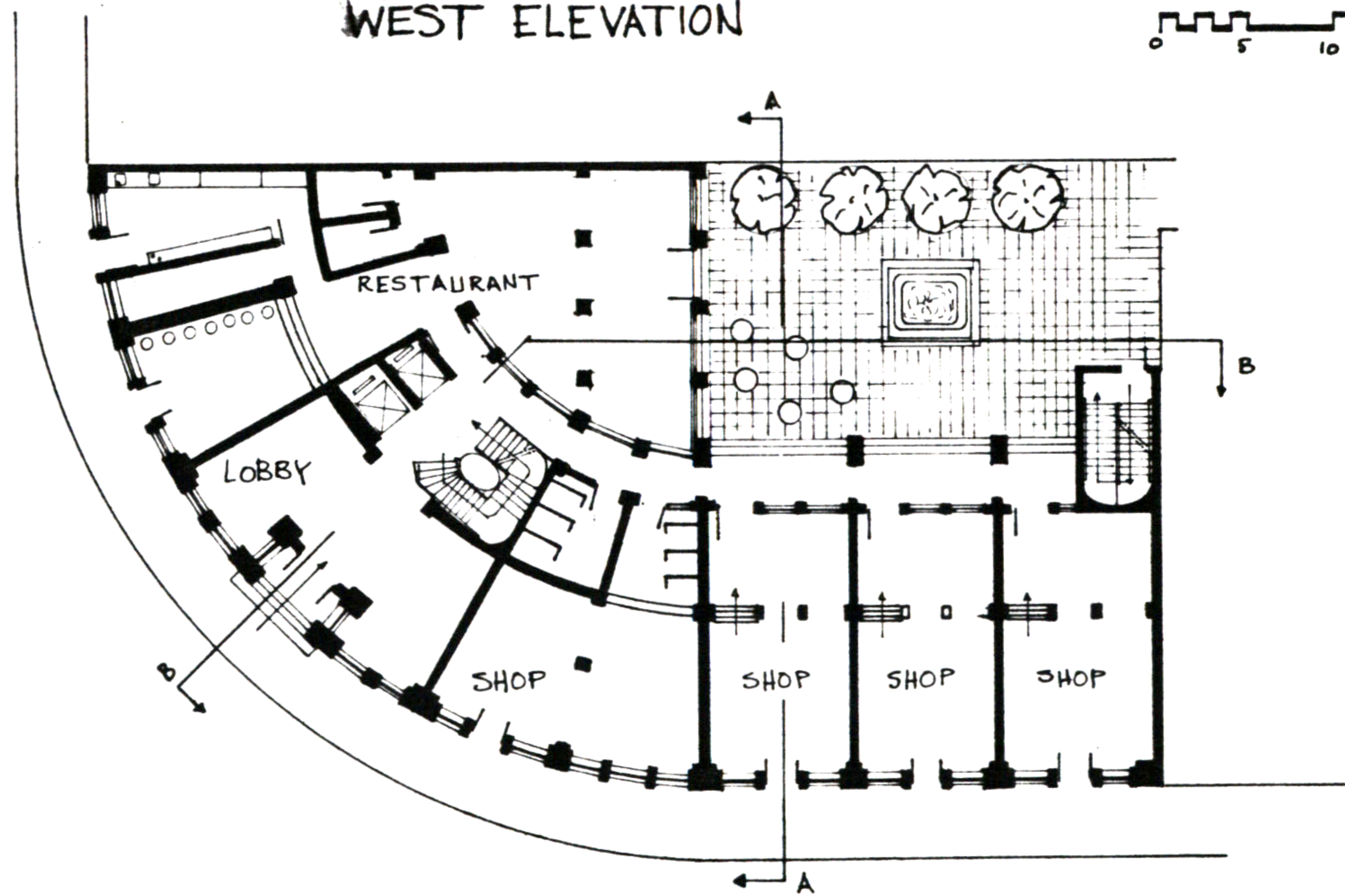
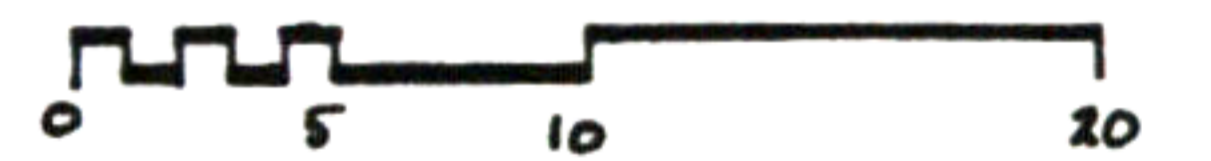


Ramzi Kawar

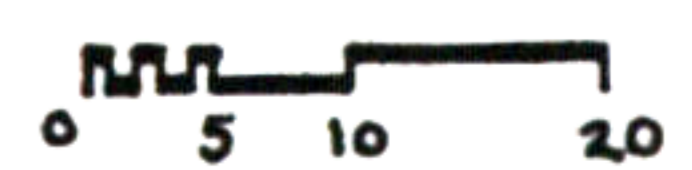
22. OFFICE BUILDING



WEST ELEVATION



GROUND FLOOR PLAN

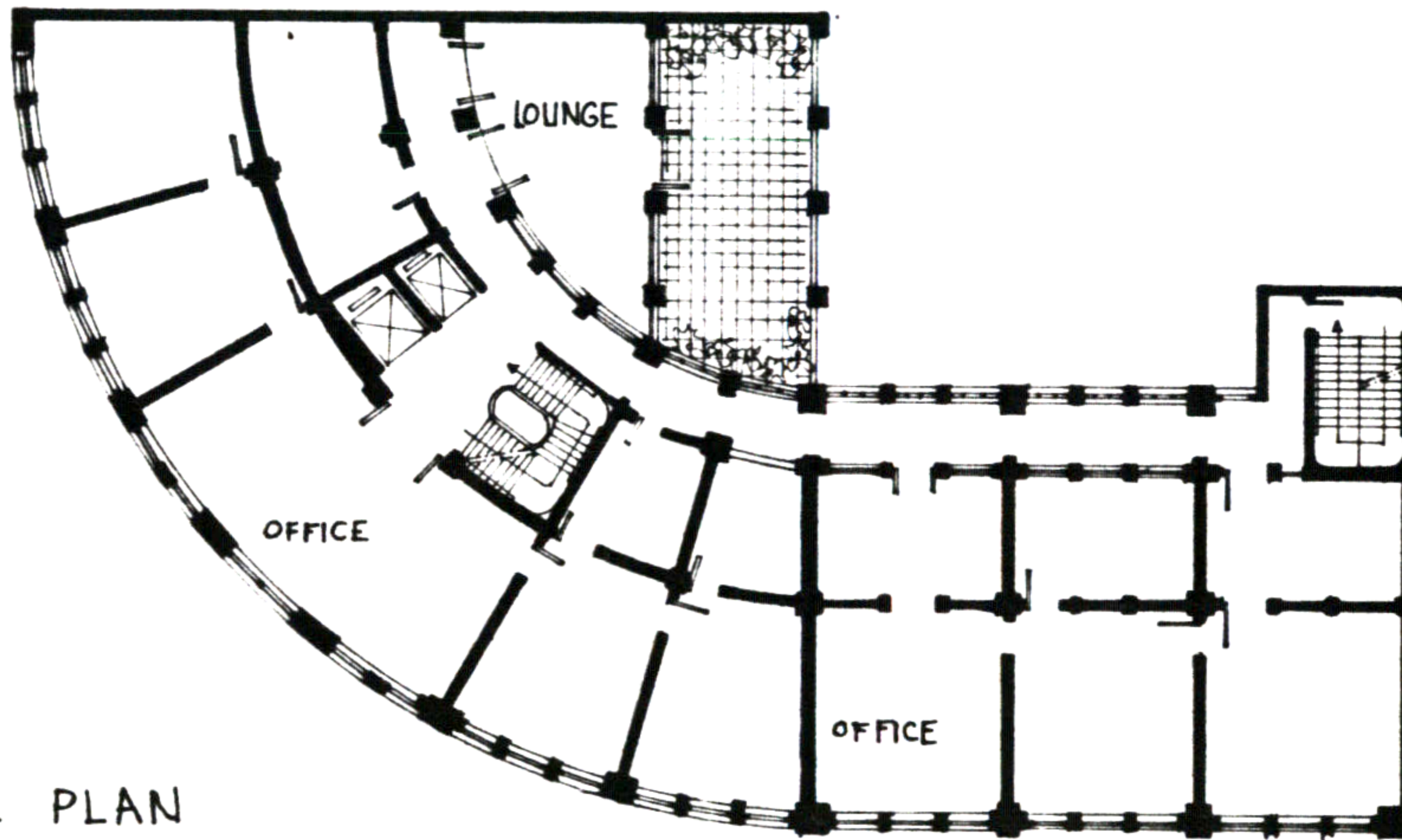


Ramzi Kawar

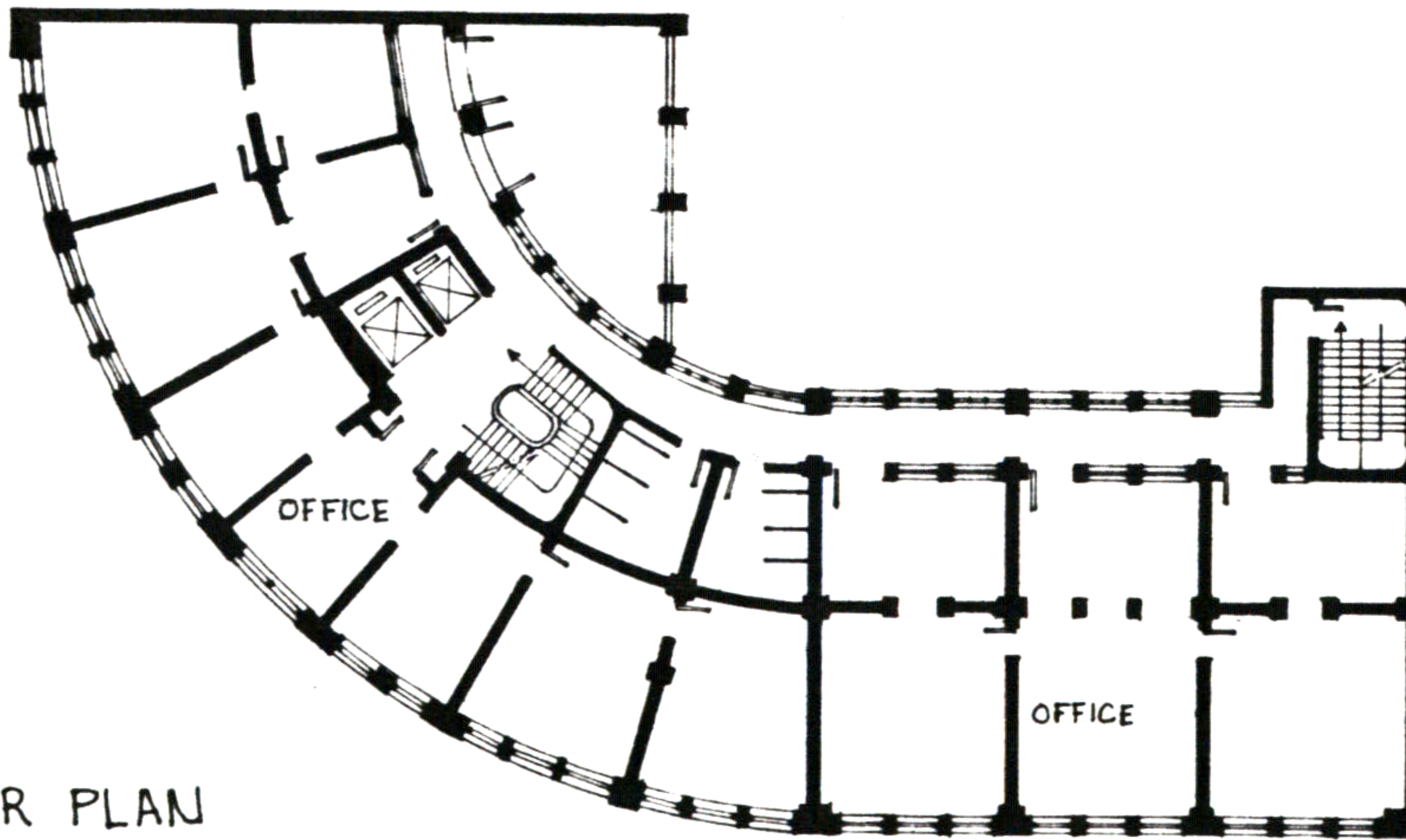
22. OFFICE BUILDING



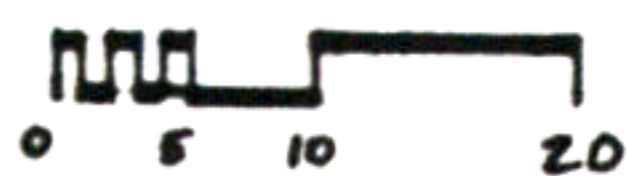
SOUTH-WEST ELEVATION



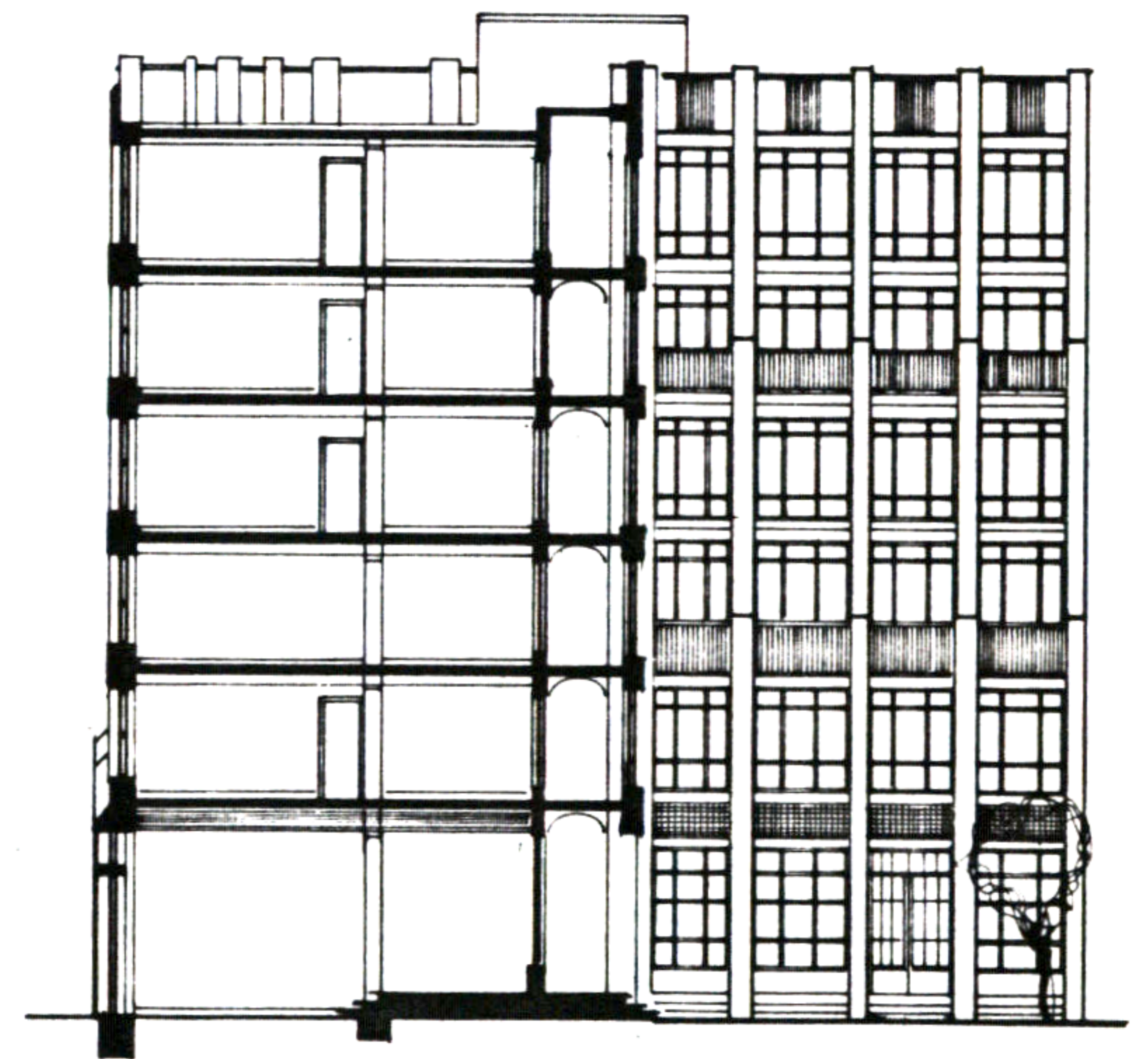
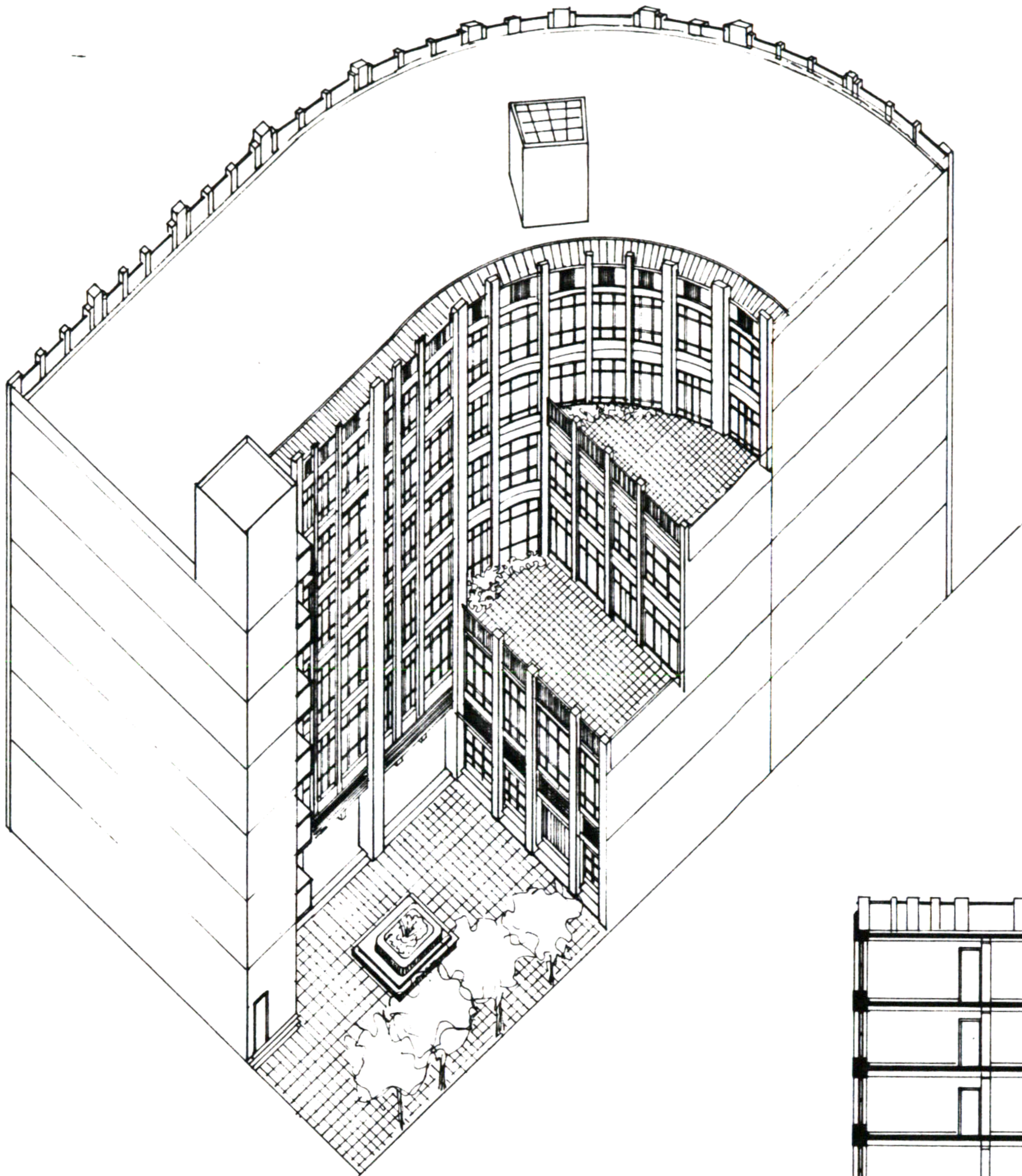
THIRD FLOOR PLAN



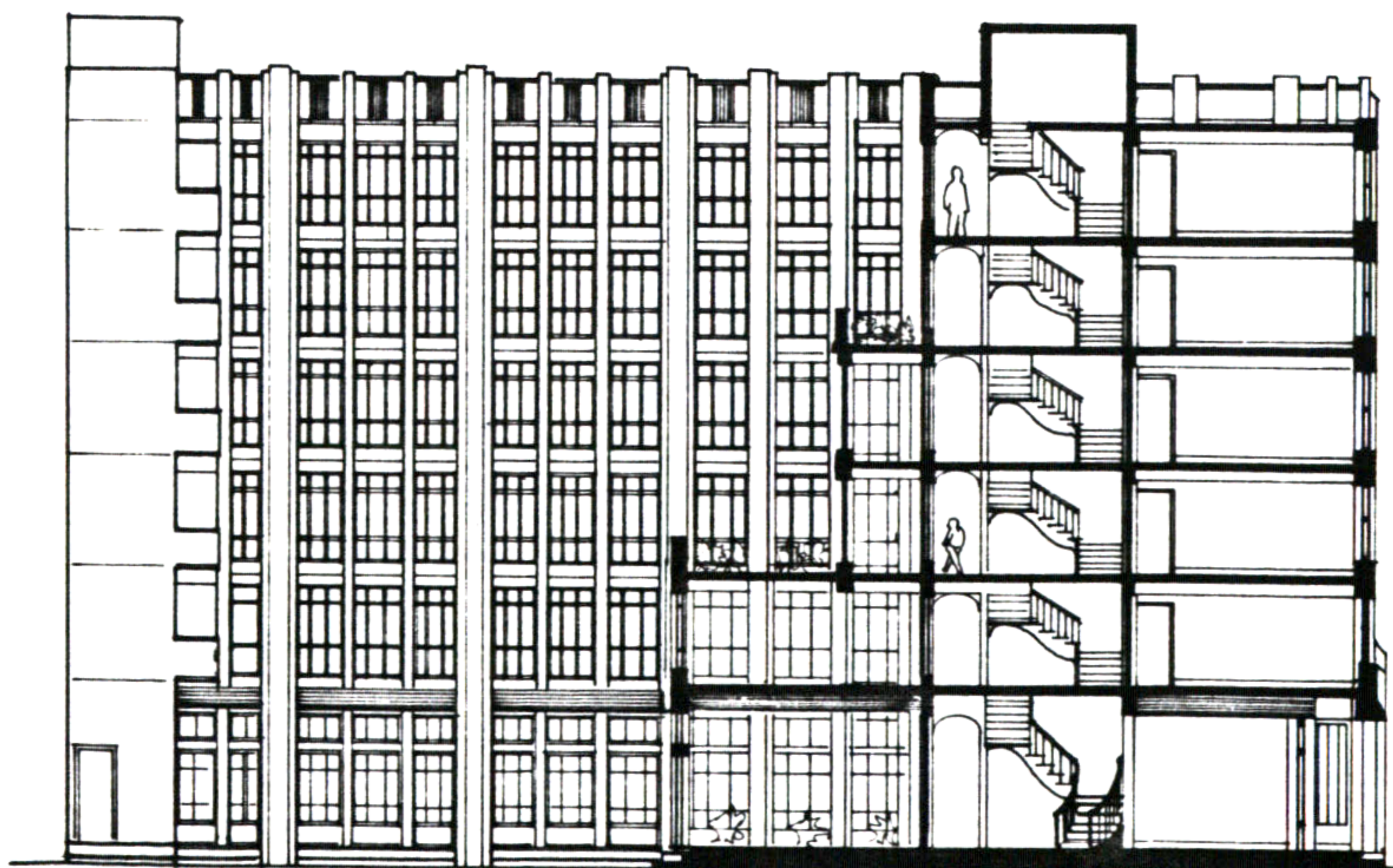
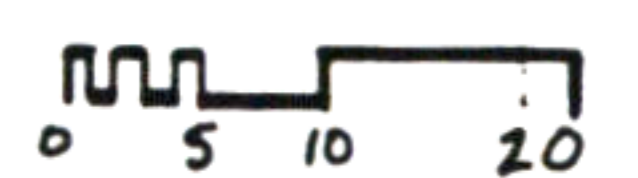
FIFTH FLOOR PLAN



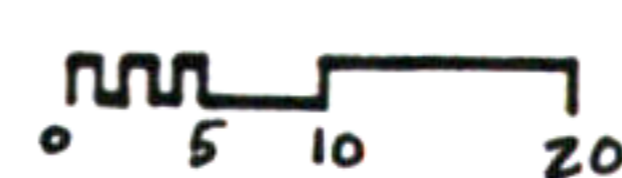
22. OFFICE BUILDING



SECTION A-A



SECTION B-B



Ramzi Kwar