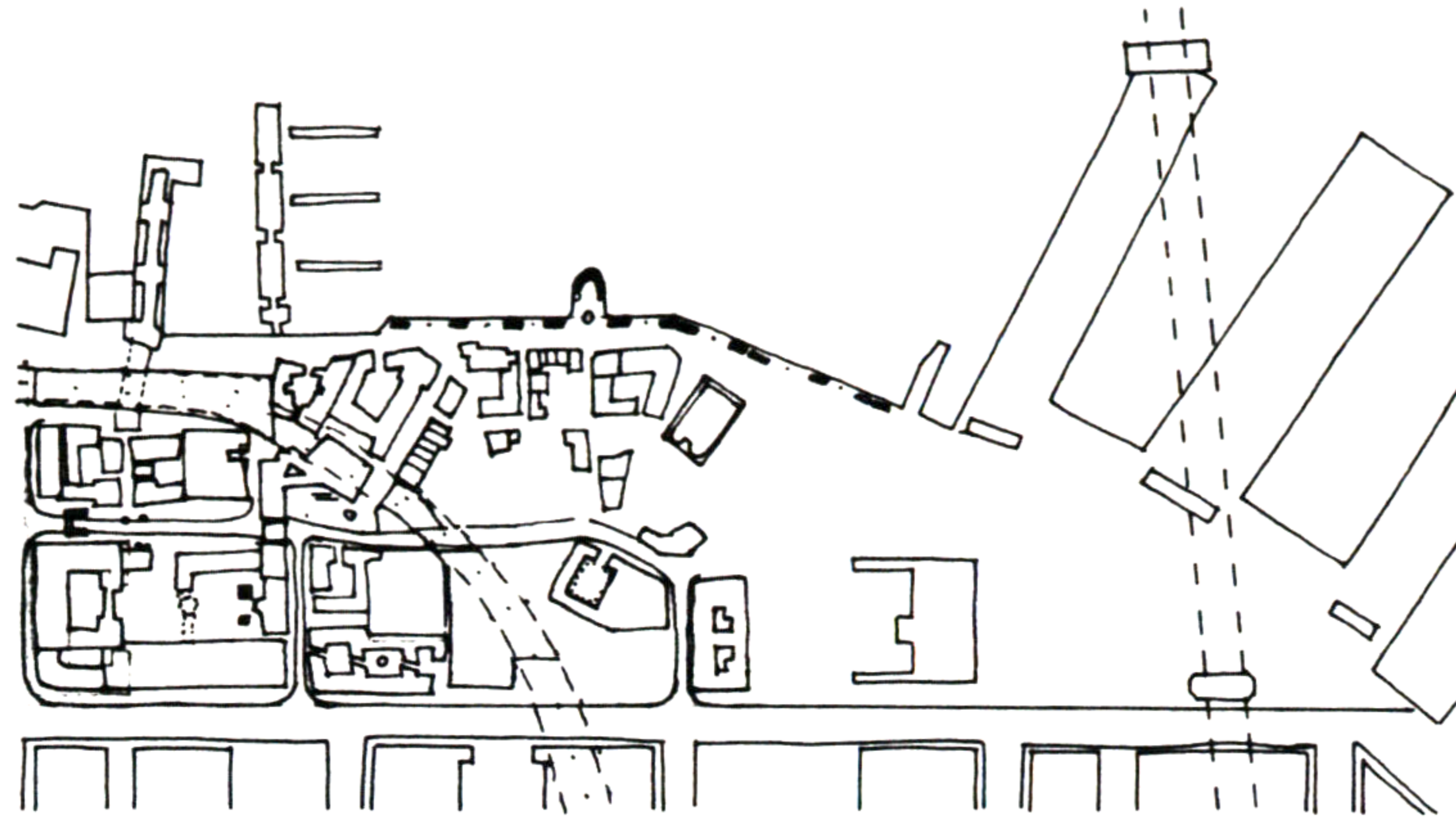
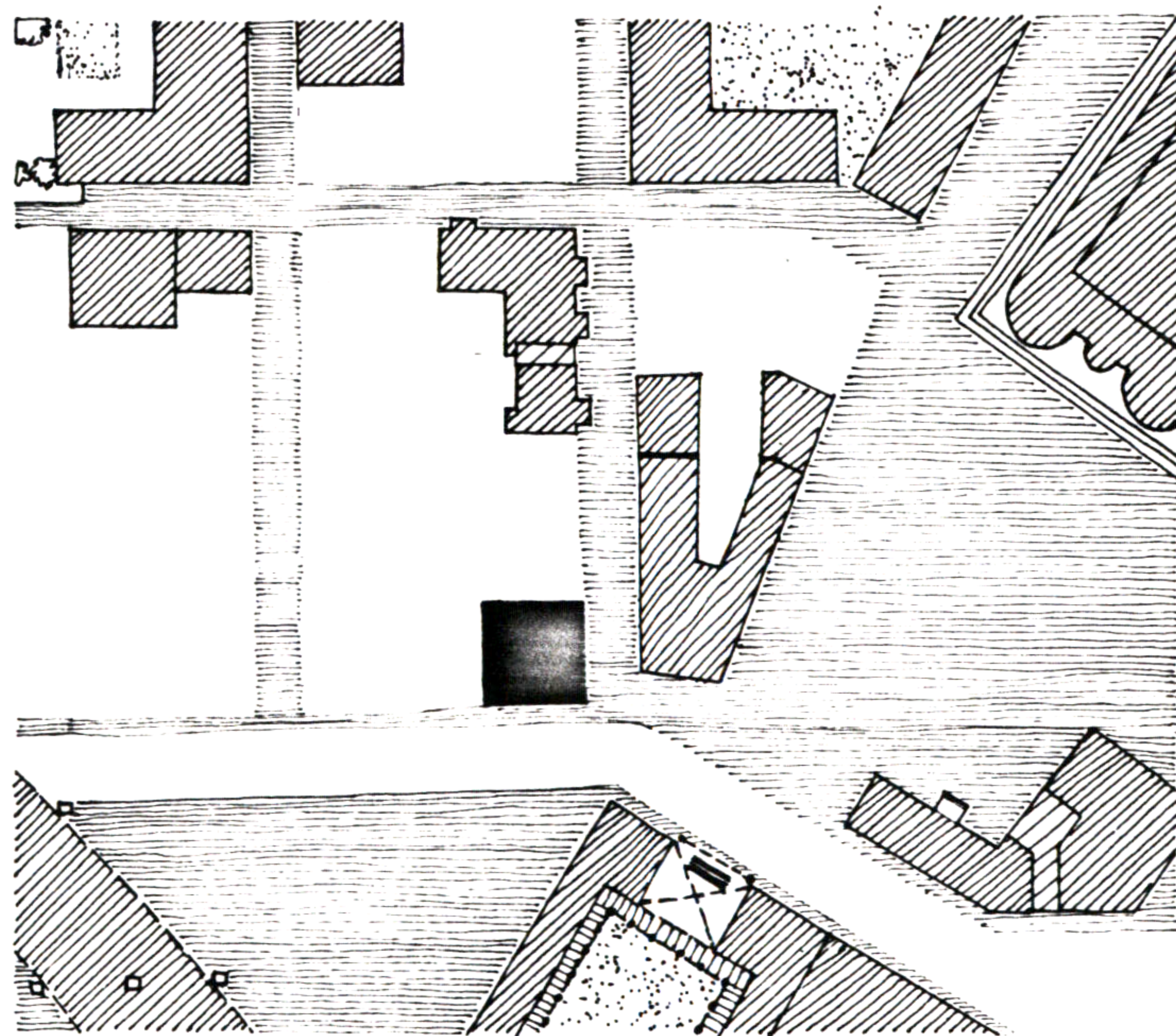


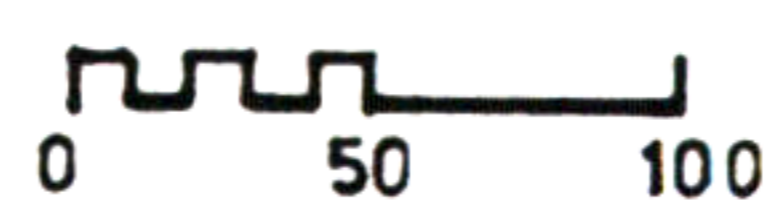
41. POST OFFICE



AT THE NORTHERN EDGE OF THE SQUARE, FACING THE STREET RUNNING THROUGH THE SITE SITS THE LOCAL POST OFFICE. THE BUILDING IS FOUR STORIES HIGH WITH AN OPEN SPACE ON THE FIRST FLOOR WHERE THE POSTAL SERVICES ARE LOCATED. ON THE REST OF THE FLOORS, OTHER OFFICES EXIST RELATED TO THE MAIL SERVICES. THE PROXIMITY OF THE BUILDING TO THE SQUARE ADDS TO ITS PUBLIC CHARACTER, AT THE SAME TIME, BEING AT THE EDGE OF THE "GRID", IT HAS A RESIDENTIAL CHARACTER. THUS IT ACTS AS A TIE BETWEEN THE TWO.



SITE PLAN



Ramzi Kawar

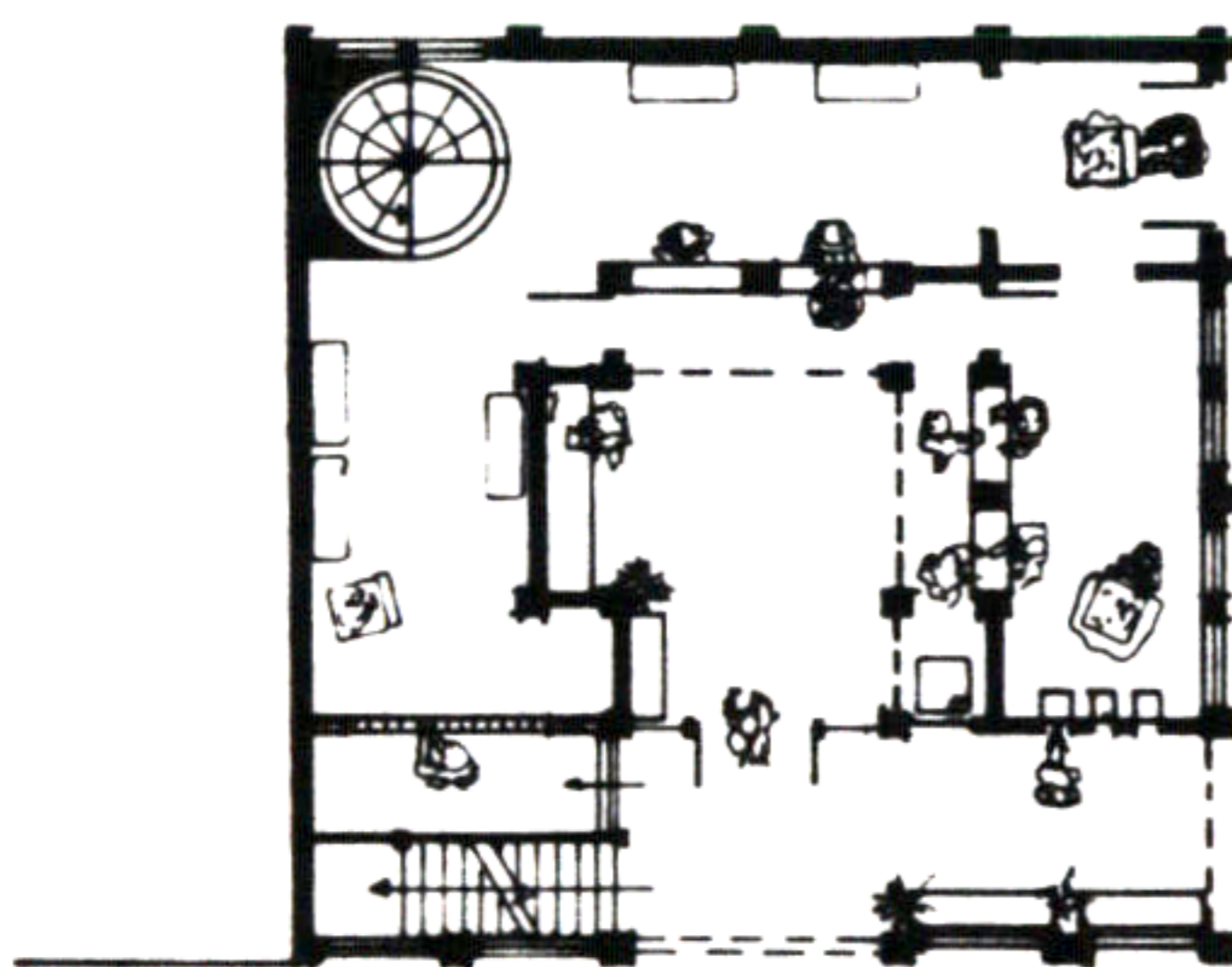
41. POST OFFICE



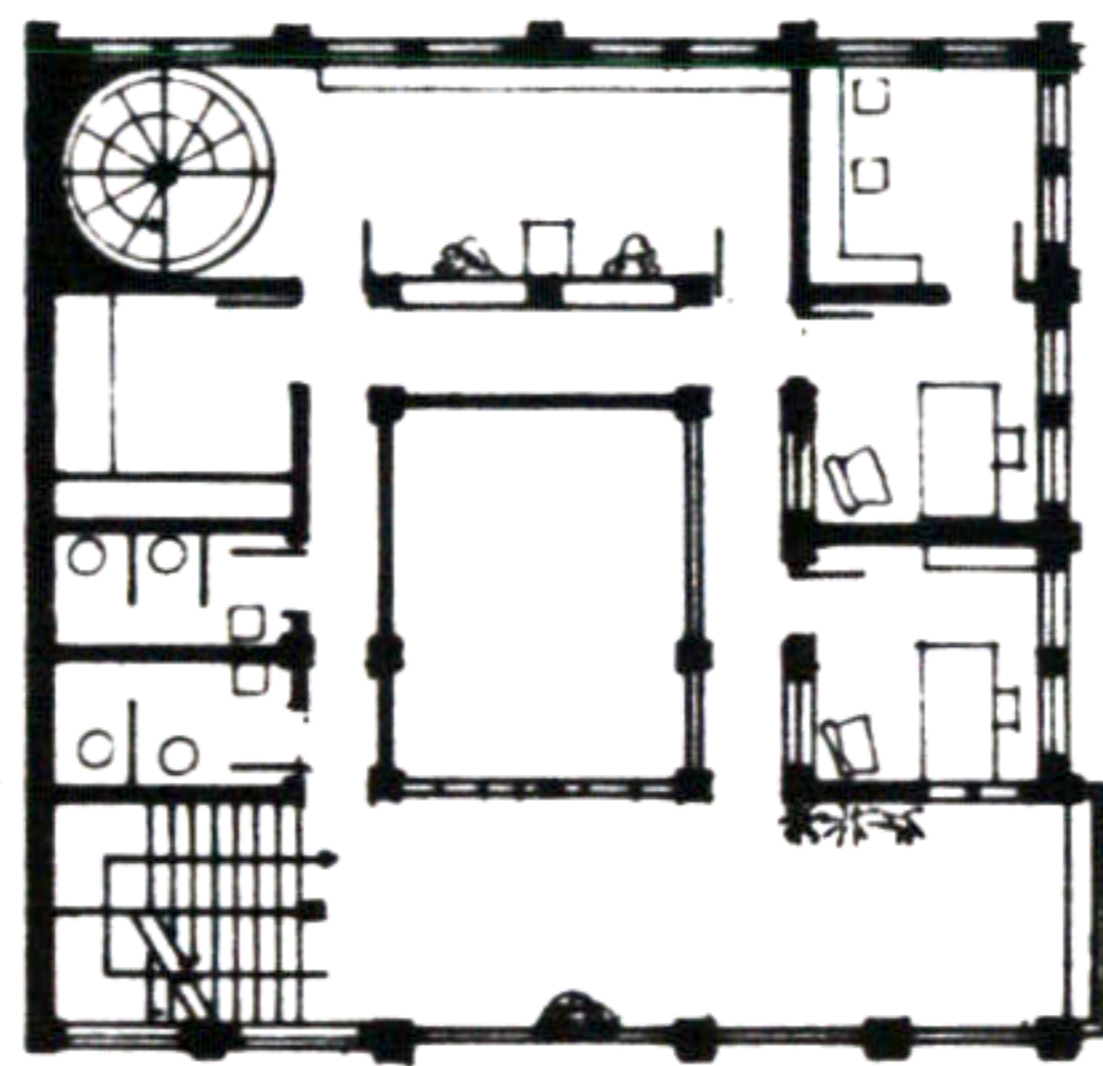
SOUTH-WEST ELEVATION



SOUTH ELEVATION



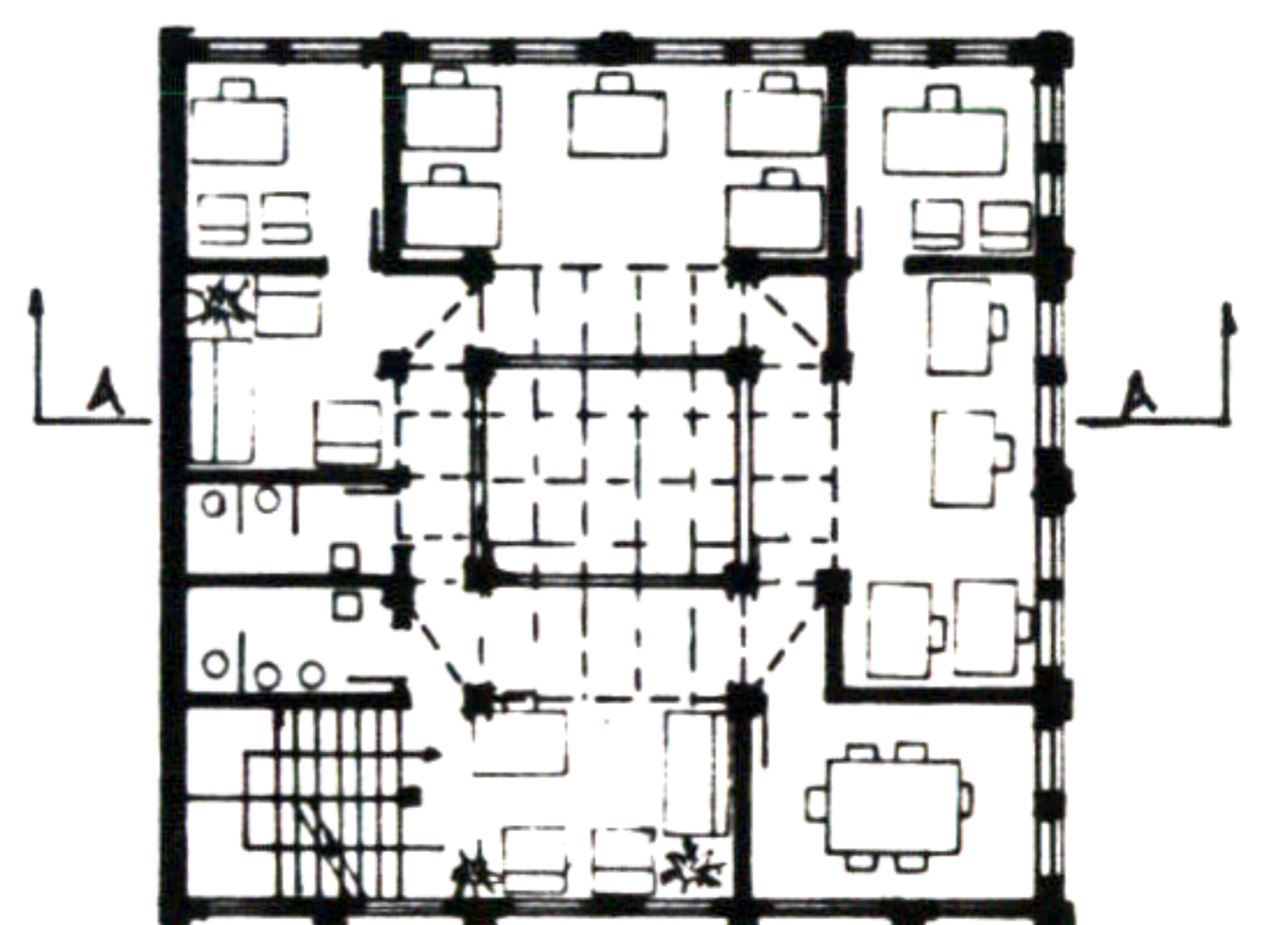
FIRST FLOOR



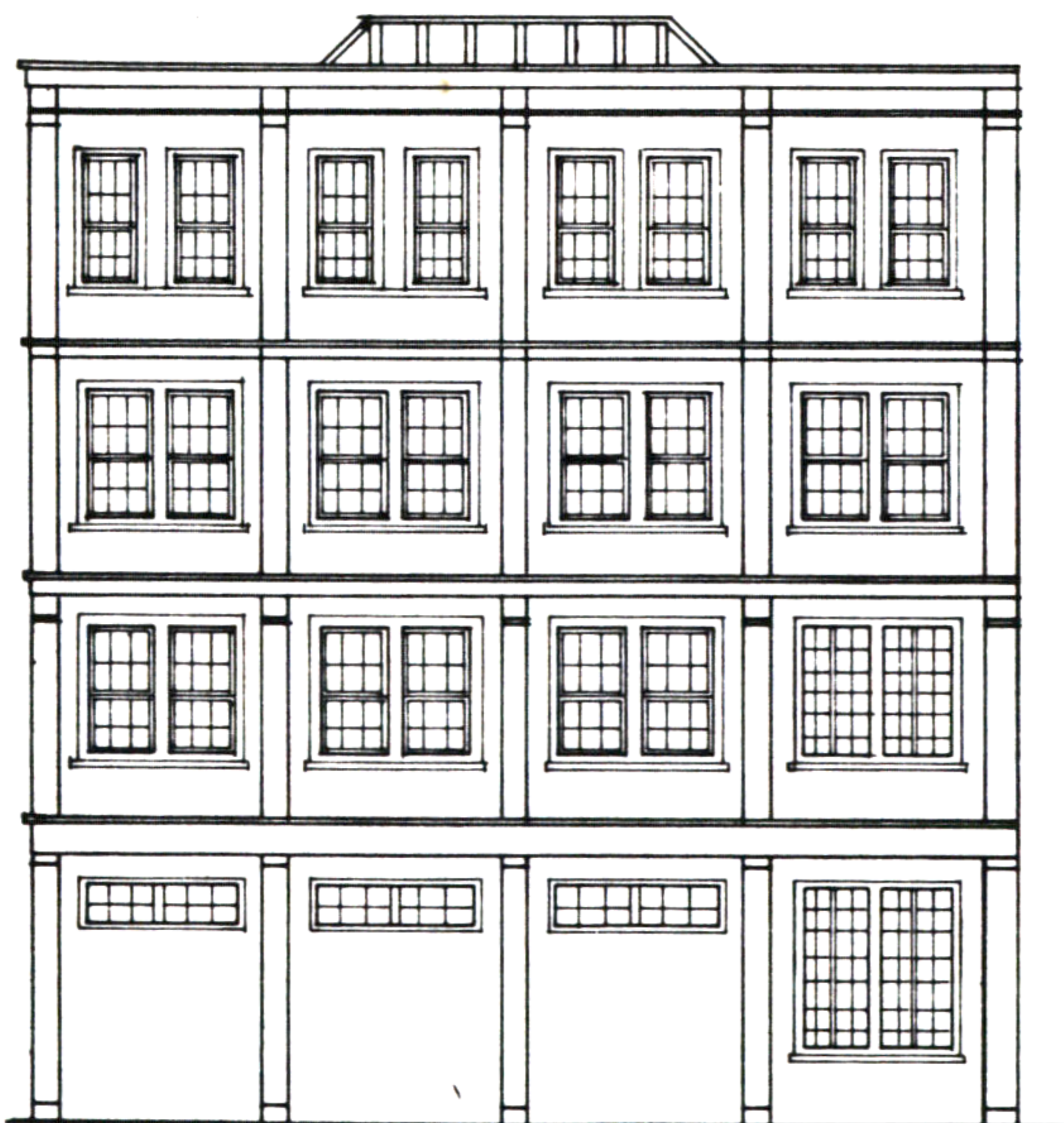
SECOND FLOOR



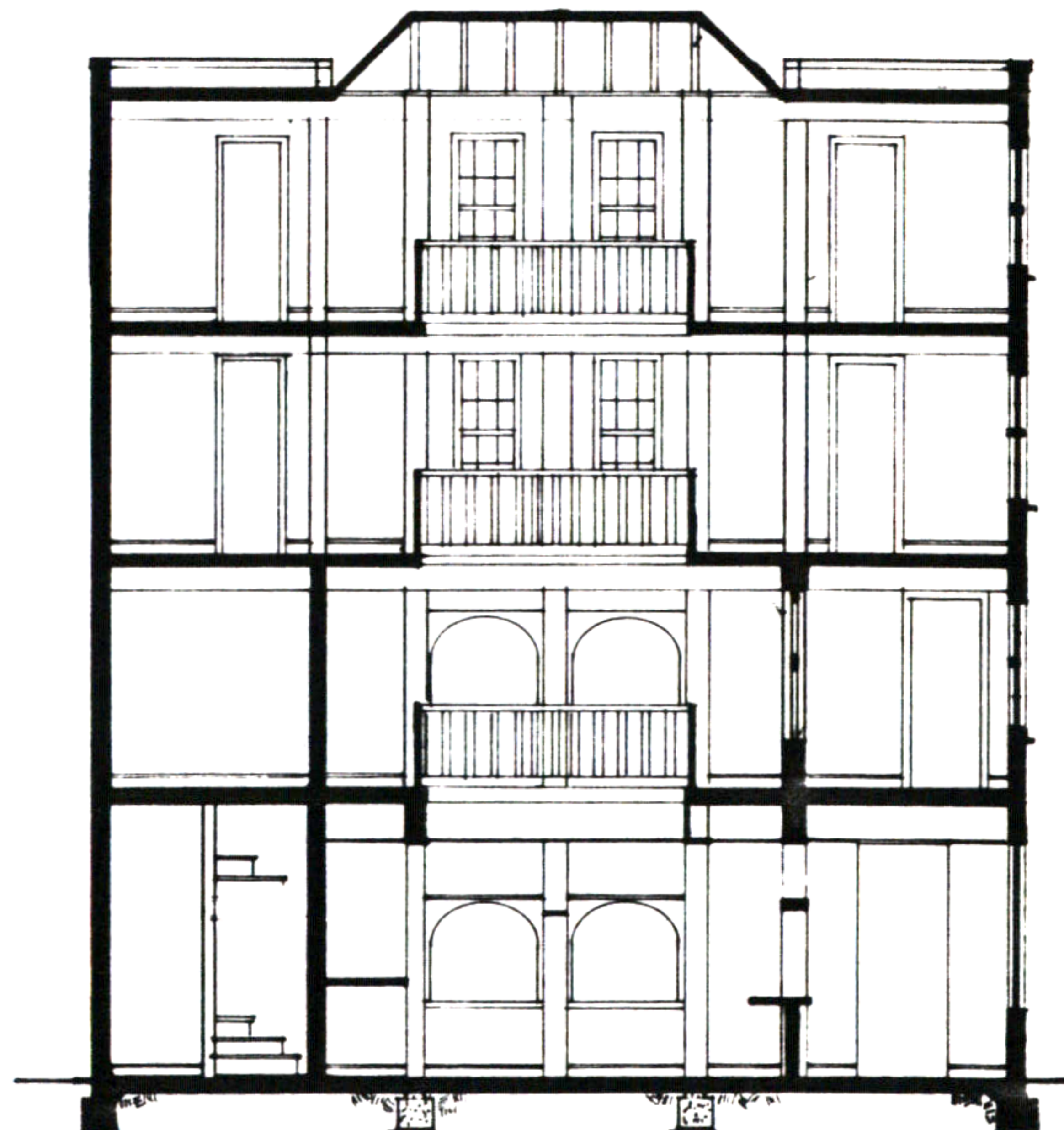
THIRD FLOOR



FOURTH FLOOR



NORTH-EAST ELEVATION



SECTION A-A

Ramzi Kavar