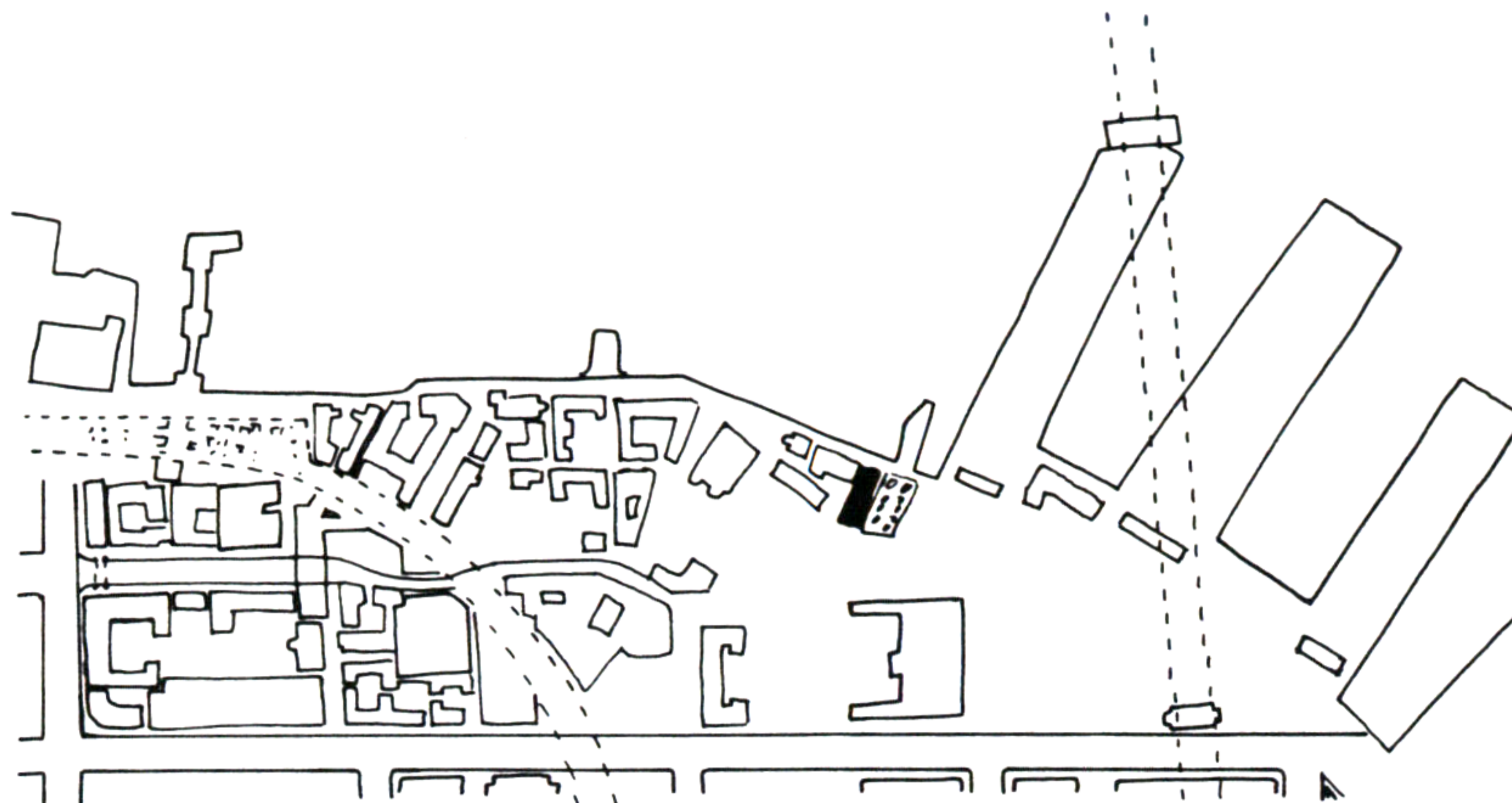
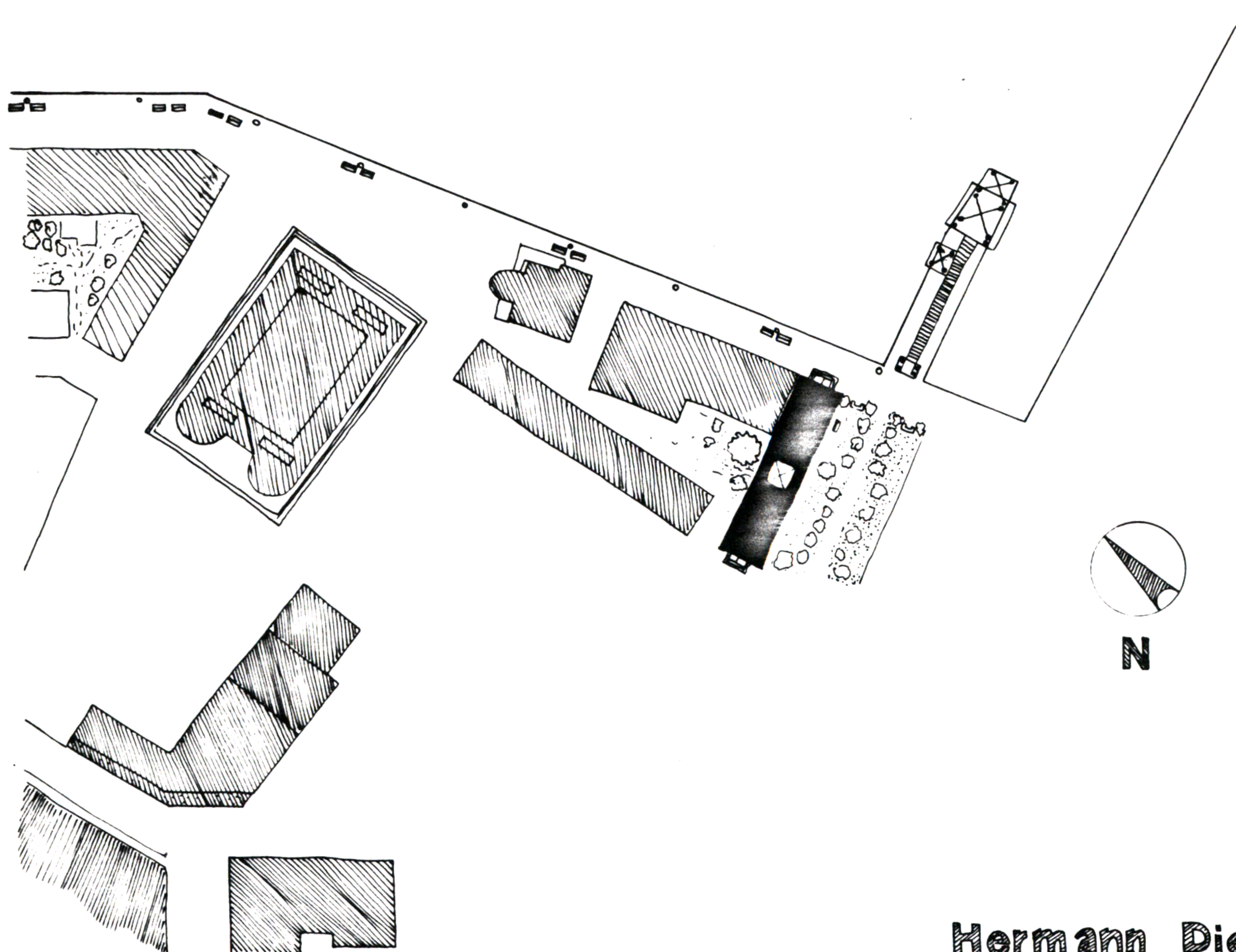


63. LIBRARY



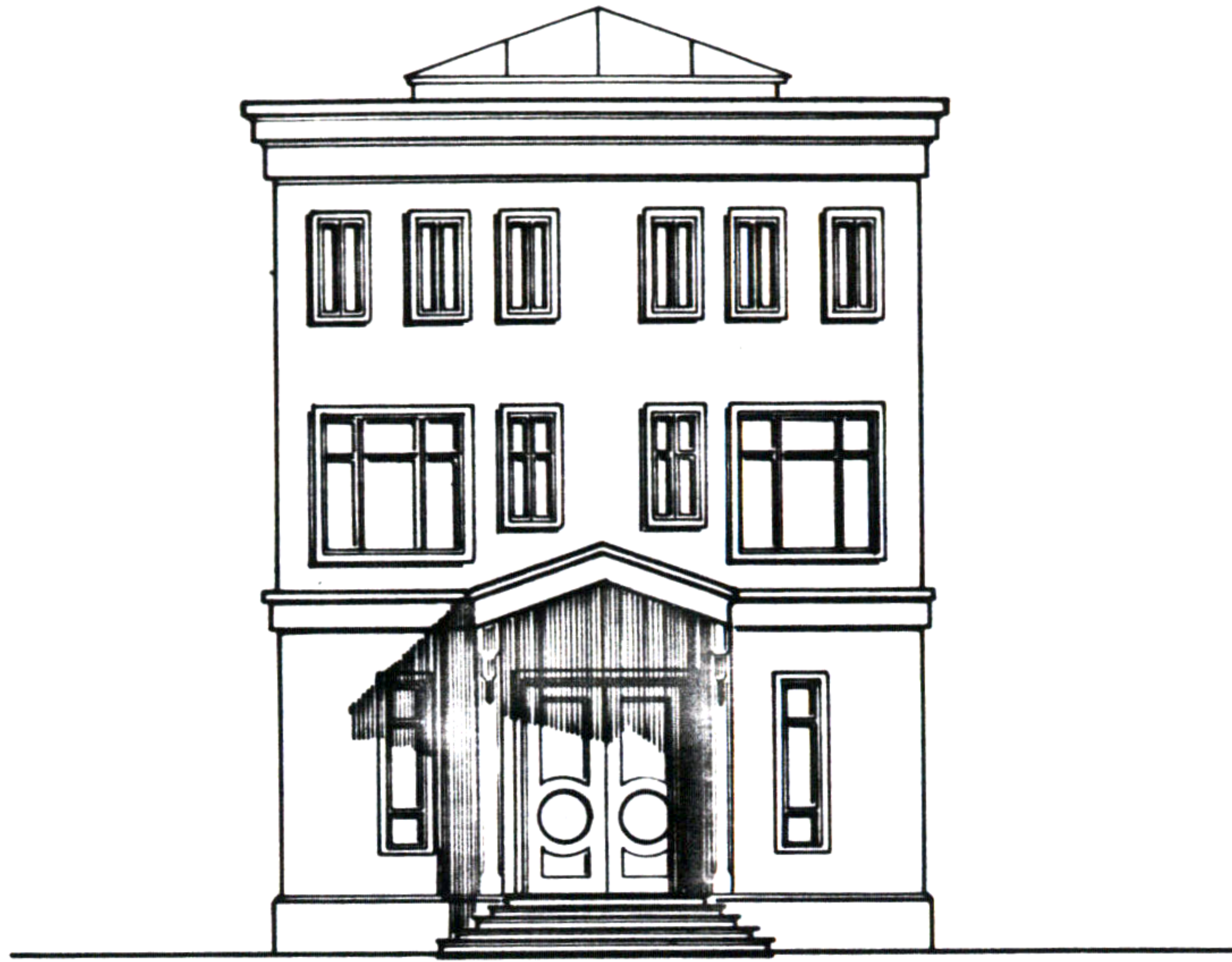
PROJECT #63 BRANCH LIBRARY

I SEE A LIBRARY TO THE NORTHSIDE OF THE GREEN THAT LEADS TO A QUIET PLACE ON THE WATER. THE MAIN ENTRANCES TO THE LIBRARY WOULD BE OFF THE ADJACENT STREETS. THERE IS A SIDE DOOR TO THE LIBRARY THAT LEADS INTO THE GREEN SO THAT PEOPLE MAY TAKE BOOKS OUT AND READ IN THE GREEN OR IN THE WATERHOUSE. THIS WILL ADD TO THE QUIET MOOD OF THE WATERHOUSE AND THE GREEN.



Hermann Diederich

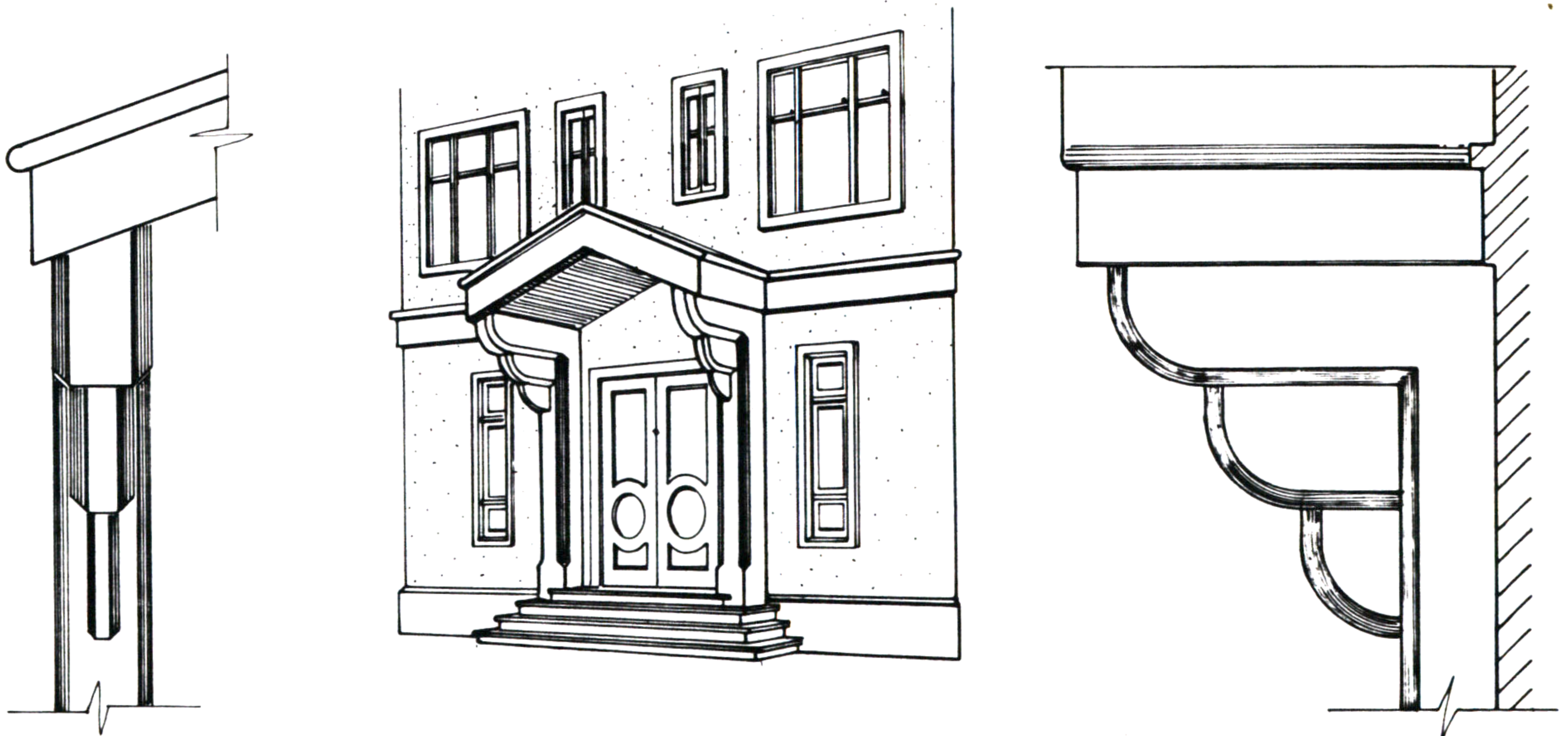
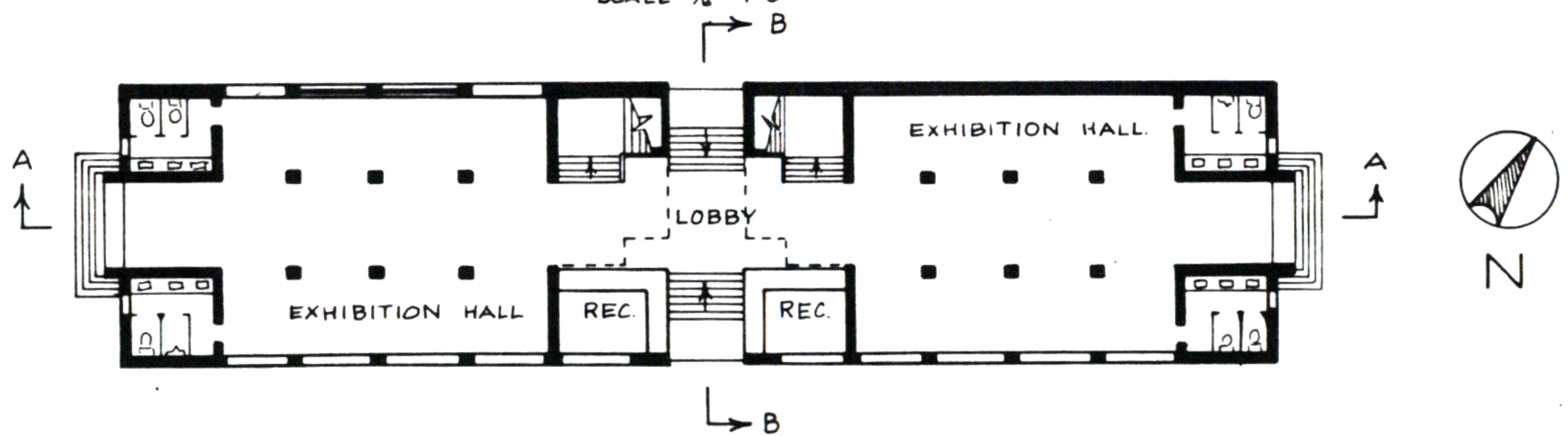
63. LIBRARY



WEST ELEVATION
SCALE $\frac{1}{8}'' = 1'-0''$

FIRST FLOOR PLAN

SCALE $\frac{1}{8}'' = 1'-0''$

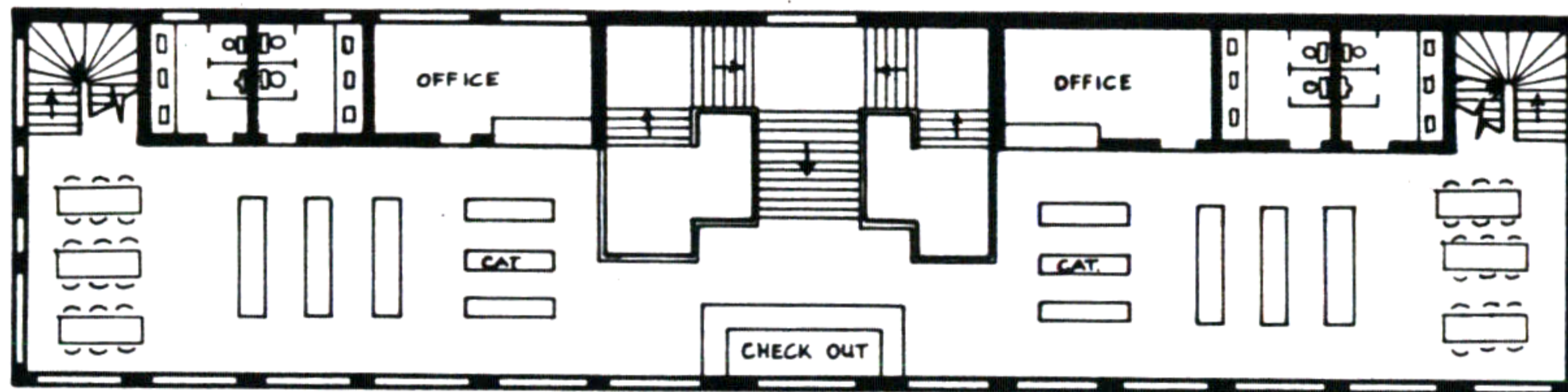


Hermann Diederich

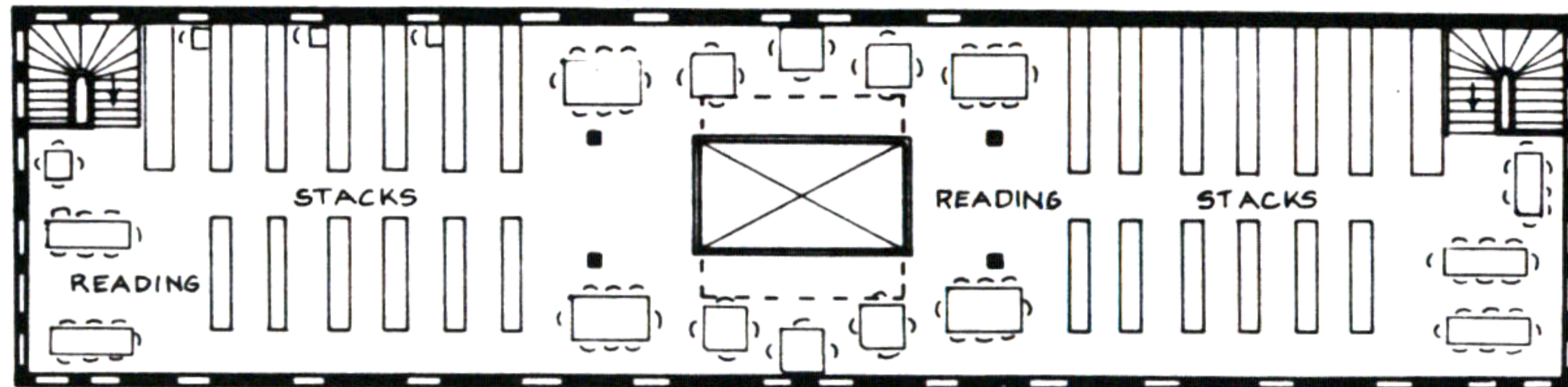
63. LIBRARY



SOUTH ELEVATION
SCALE $\frac{1}{4}'' = 1'-0''$



SECOND FLOOR PLAN

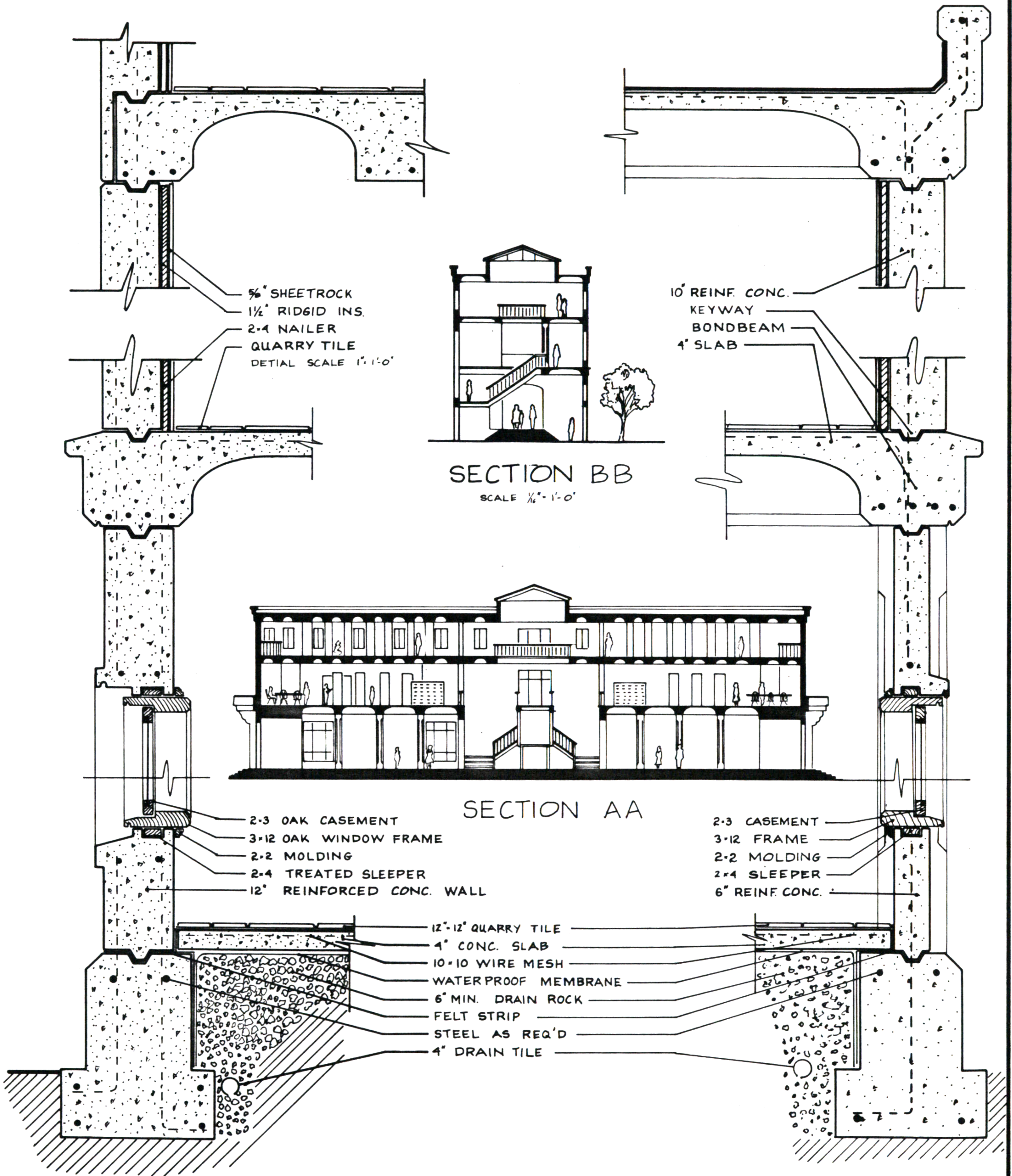


THIRD FLOOR PLAN



NORTH ELEVATION

63. LIBRARY



5/8" SHEETROCK
 1 1/2" RIDGID INS.
 2x4 NAILER
 QUARRY TILE
 DETAIL SCALE 1" = 1'-0"

10' REINF. CONC.
 KEYWAY
 BONDBEAM
 4" SLAB

SECTION BB
 SCALE 1/8" = 1'-0"

SECTION AA

2-3 OAK CASEMENT
 3-12 OAK WINDOW FRAME
 2-2 MOLDING
 2-4 TREATED SLEEPER
 12" REINFORCED CONC. WALL

2-3 CASEMENT
 3-12 FRAME
 2-2 MOLDING
 2x4 SLEEPER
 6" REINF. CONC.

12"-12" QUARRY TILE
 4" CONC. SLAB
 10-10 WIRE MESH
 WATERPROOF MEMBRANE
 6" MIN. DRAIN ROCK
 FELT STRIP
 STEEL AS REQ'D
 4" DRAIN TILE