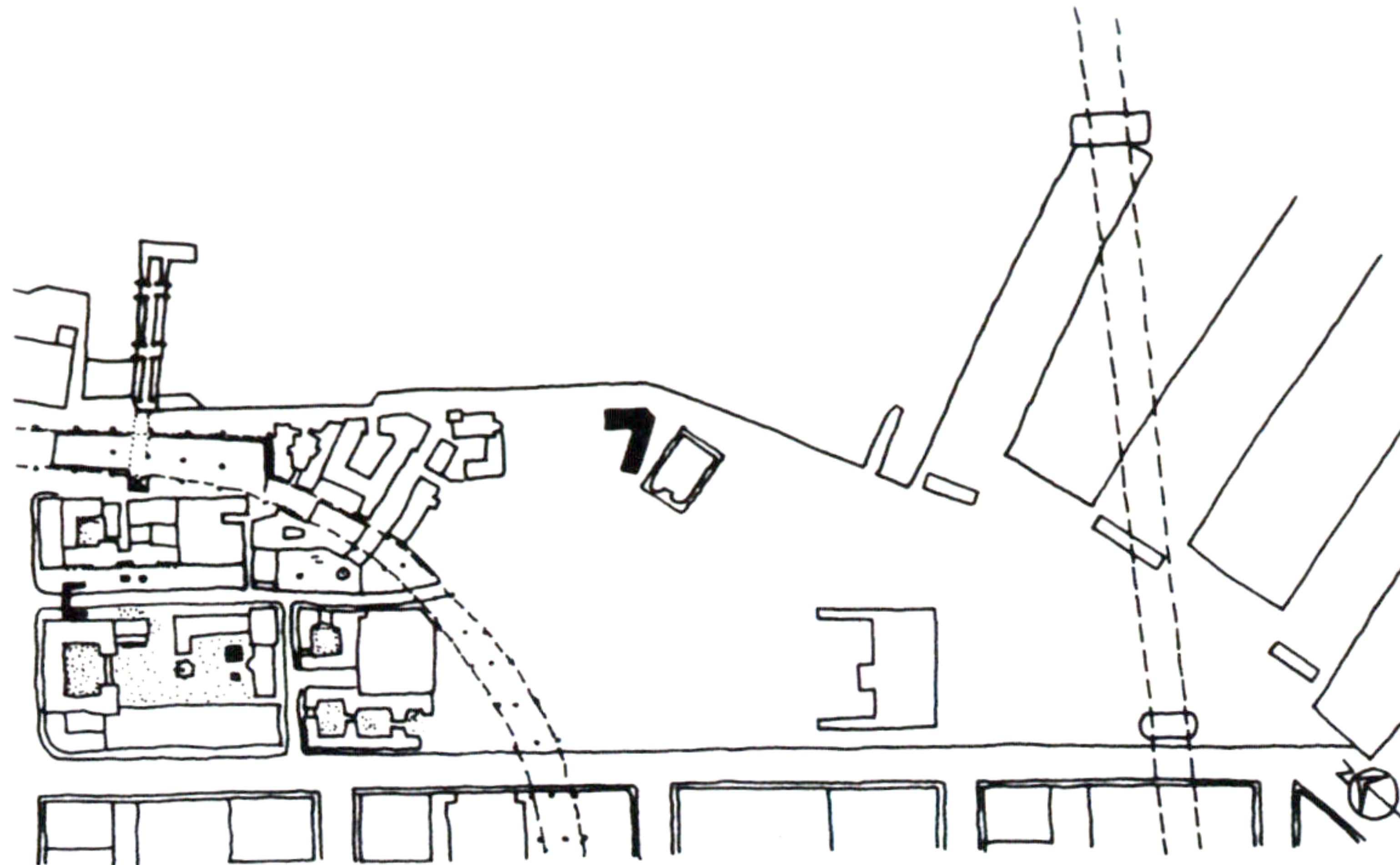


## 23. HOTEL

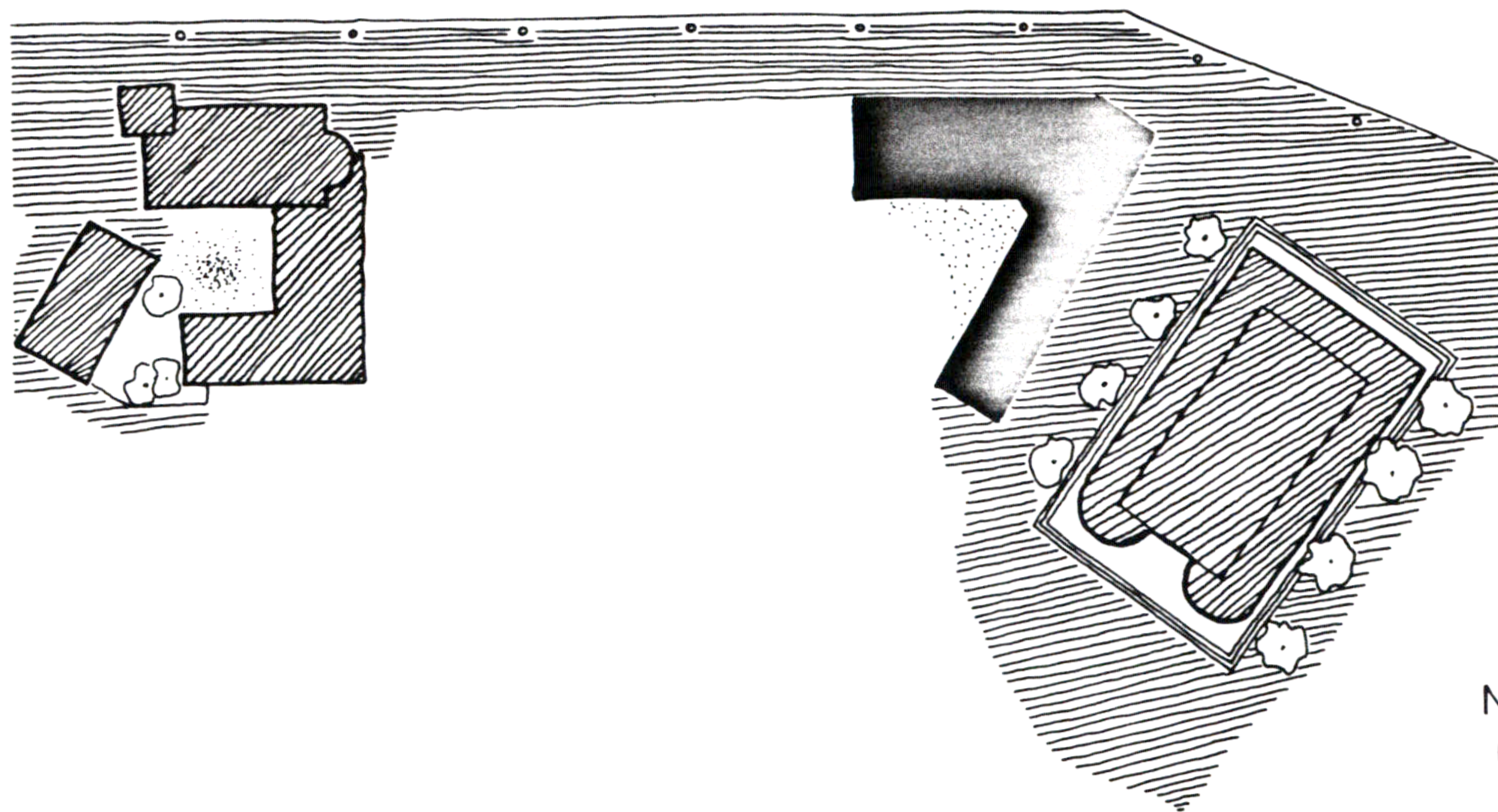


WALKING ALONG THE EDGE OF THE WATER RIGHT NEXT TO THE BATH ON THE AGREED UPON GRID PATTERN, I SEE A HOTEL. THE QUALITY OF LIFE IN THIS HOTEL IS SUCH THAT IT ATTRACTS PEOPLE WHO HAVE A LONGER PERIOD OF STAY IN THE COMMUNITY RATHER THAN TYPICAL TOURISTS WHO ENJOY GRAND HOTELS.

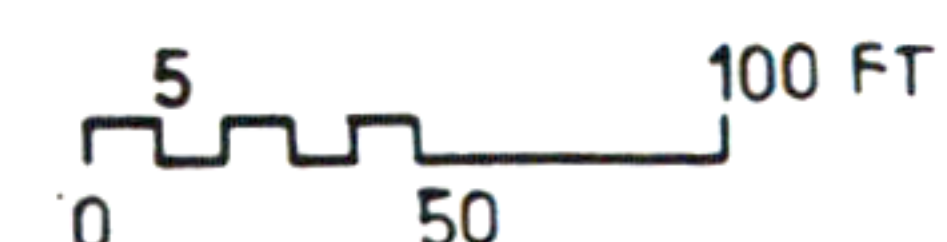
THE BUILDING HAS TWO WINGS OF FOUR STORIES EMBRACING A GARDEN WHICH IS ALSO SHARED BY TWO OTHER APARTMENT BUILDINGS ON THAT SAME PORTION OF THE GRID. ITS RELATIONSHIP TO THE BATH IS SUCH THAT IT FORMS A WALKWAY WIDENING TOWARDS THE WATER WITH THE MAIN ENTRANCE TO THE HOTEL AT THE END OF IT. THERE IS ALSO ANOTHER POINT OF ENTRY TO THE HOTEL WHICH IS OFF OF THE PUBLIC SQUARE AND IT OPENS UP TO THE SHOPS AND COMMUNAL SERVICES.

THE GROUND FLOOR OF THE HOTEL CONSISTS OF THE LOBBY SURROUNDED BY THE RESTAURANT, MAIN VERTICAL CIRCULATION, AND PUBLIC SERVICES. THE REMAINING THREE FLOORS CONSIST OF PRIVATE ROOMS WITH A VARIETY OF SIZES AND ARRANGEMENTS TO CREATE A FEELING OF LIFE IN A PRIVATE HOUSE YET ALONGSIDE MANY OTHER PEOPLE.

ONE COULD AS WELL EXPERIENCE DIFFERENT FEELINGS DEPENDING ON WHICH PART OF THE BUILDING THEY ARE. ONE COULD SIT IN AN EASY CHAIR ON THEIR BALCONY IN EARLY EVENING, GAZING TO THE WATER WHILE REMEMBERING MEMORIES OF LIFE; COULD SIT NEXT TO A WINDOW FACING THE GARDEN ON A WARM AFTERNOON AND DOZE OFF WHILE READING A WEEKLY MAGAZINE; OR COULD LOOK ONTO THE WALKWAY WHICH LEADS PEOPLE FROM THE SQUARE TO THE OCEAN WHILE THEY PASS THE BEAUTIFUL GLASS SWIMMING POOL.



SITE PLAN

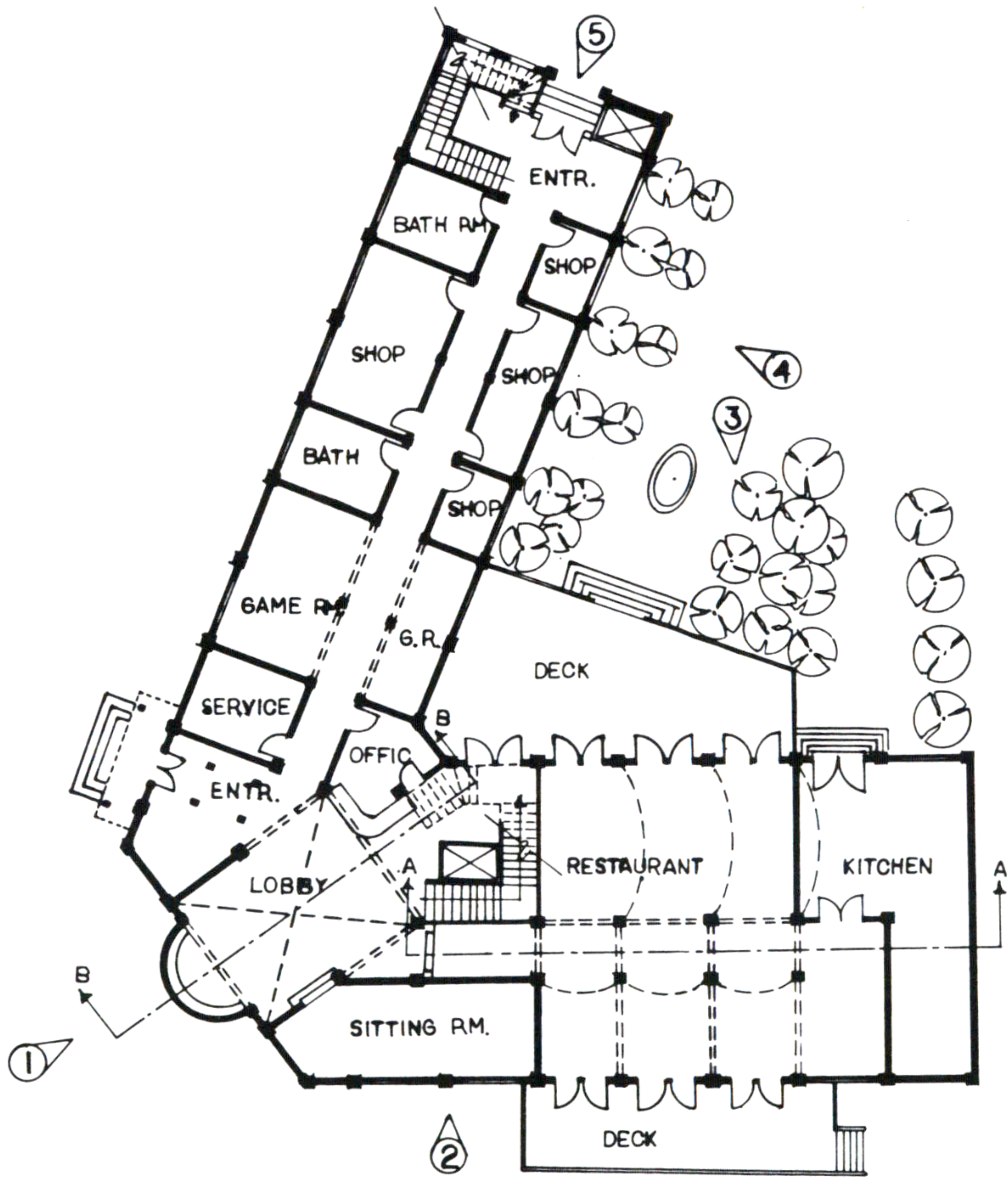


**Shohreh Daemi**

# 23. HOTEL



ELEVATION ② 0 5 10 15



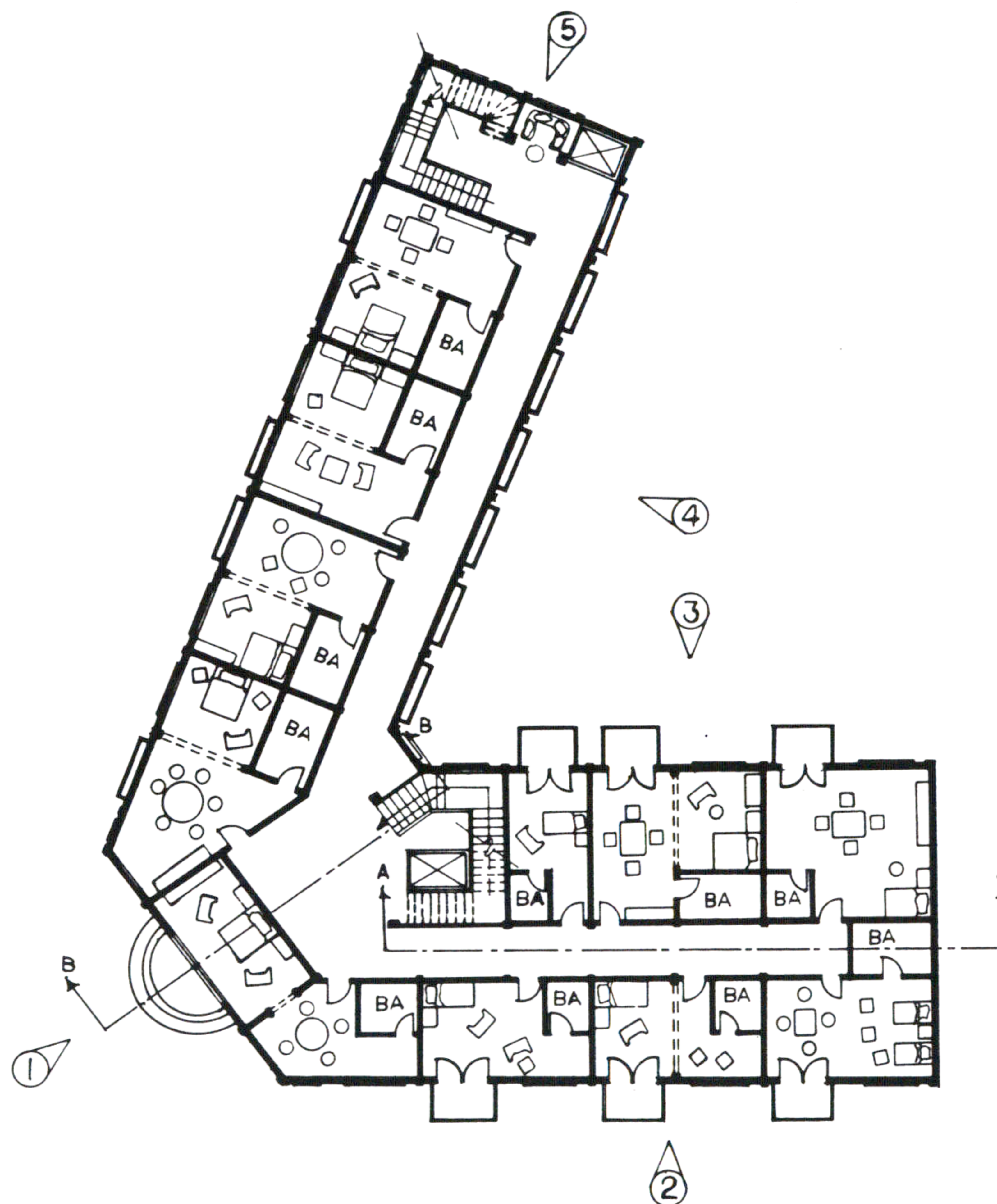
FLOOR 1 0 10 20

Shohreh Daemi

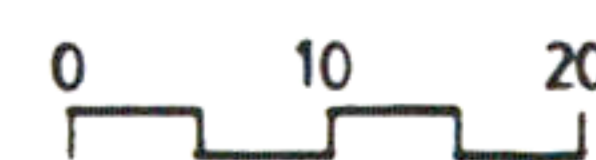
# 23. HOTEL



ELEVATION ①



FLOORS 2-3-4



Shohreh Daemi

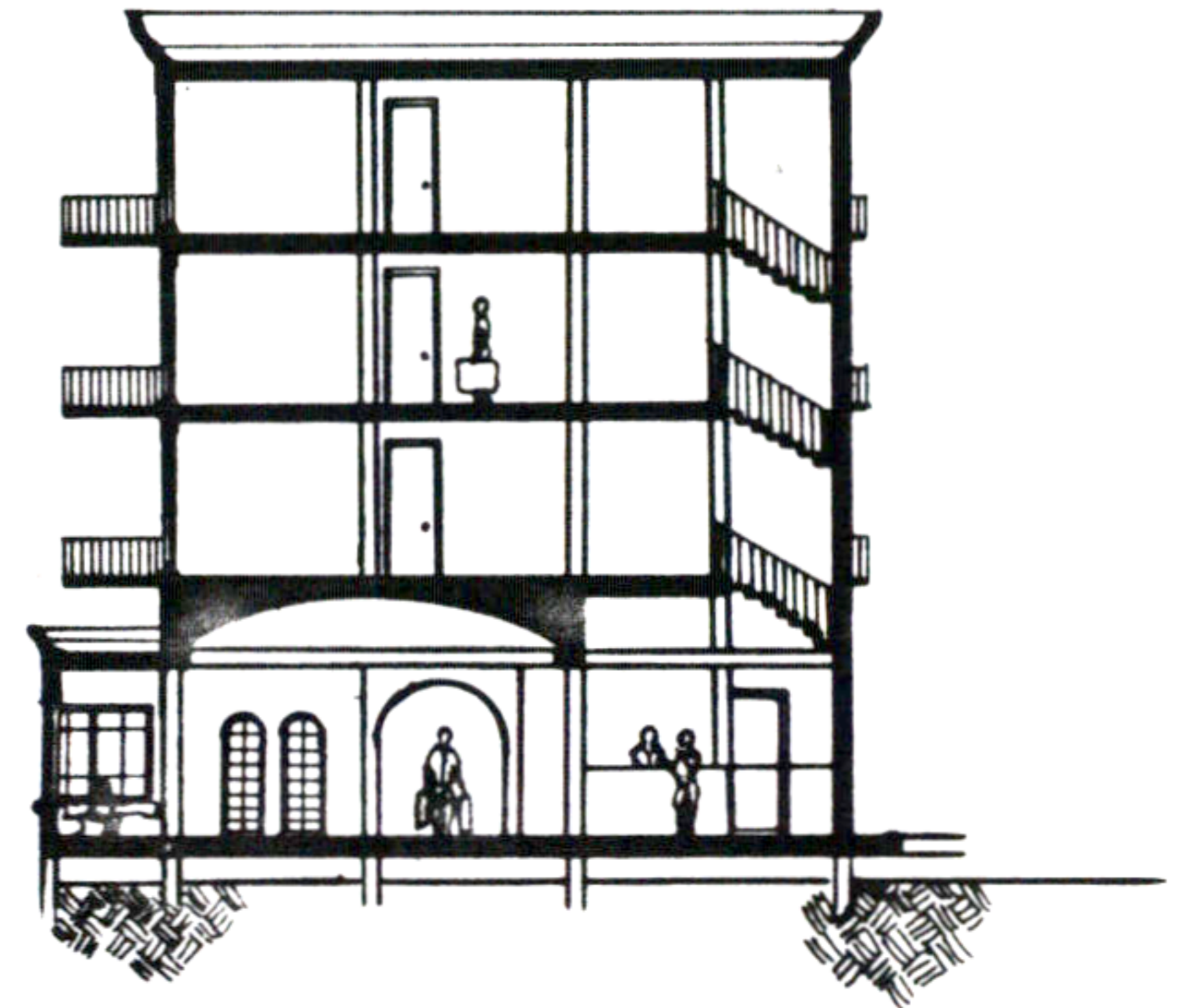
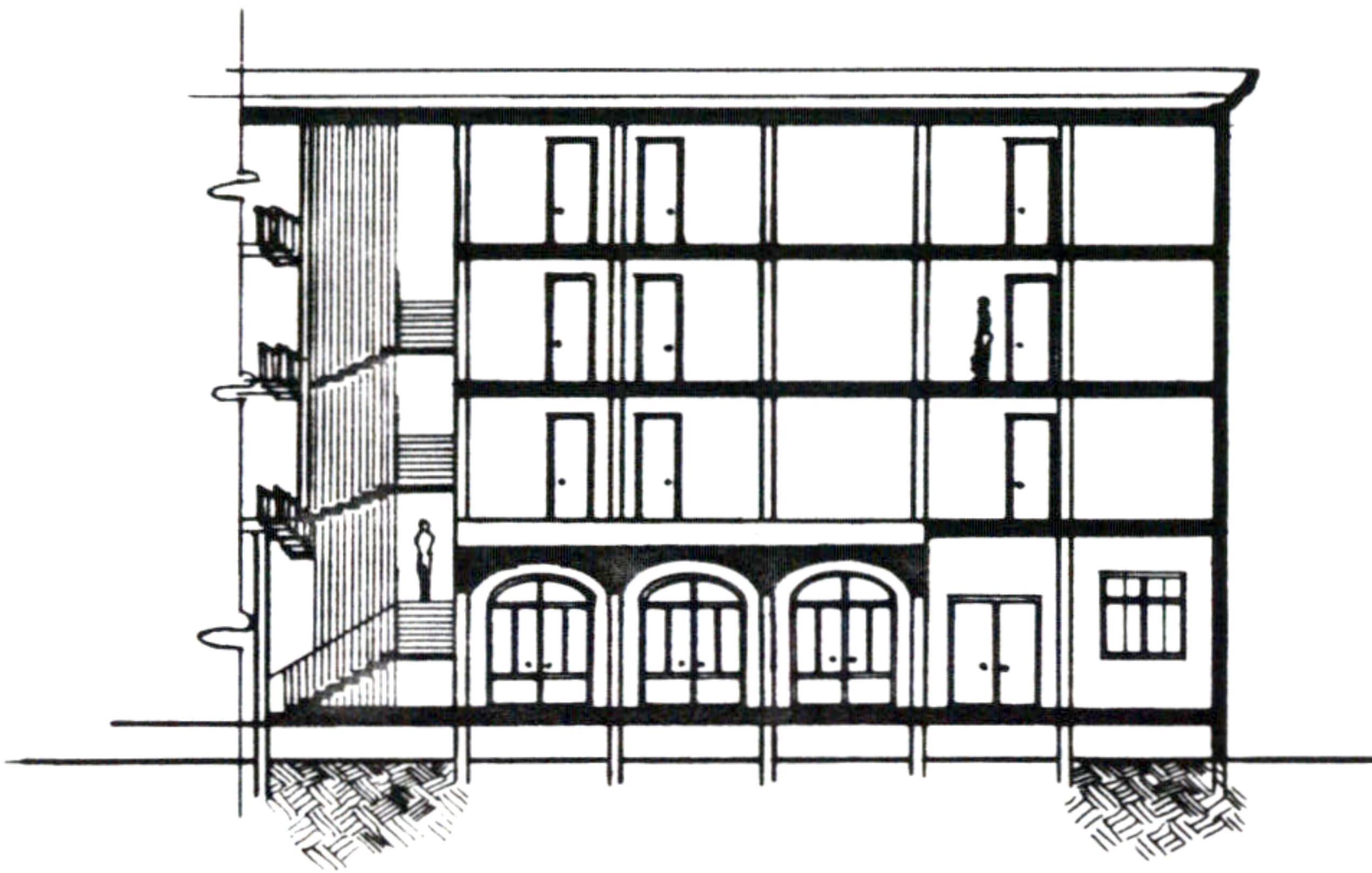
# 23. HOTEL



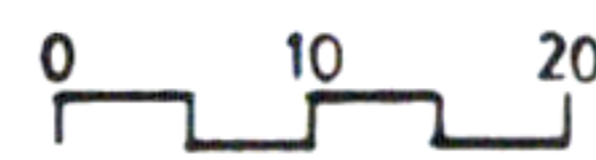
ELEVATION ③

ELEVATION ④

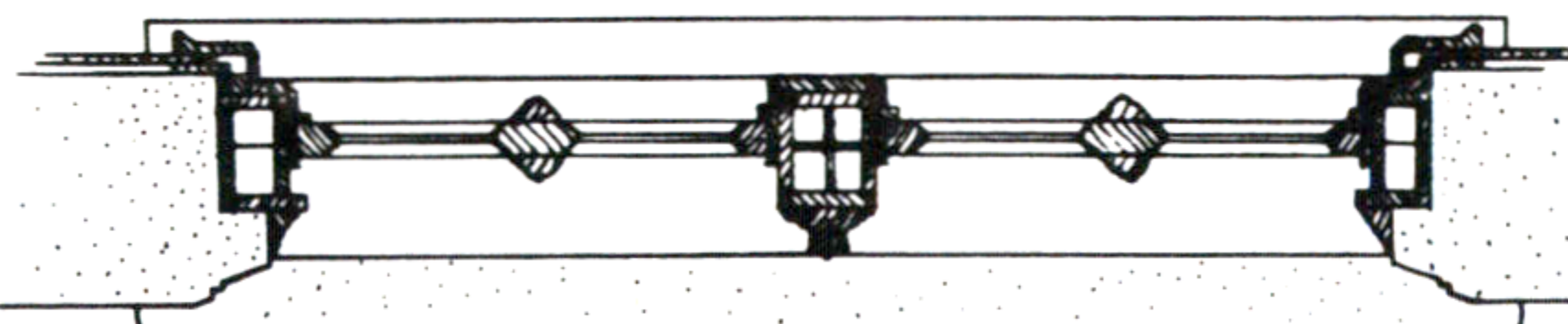
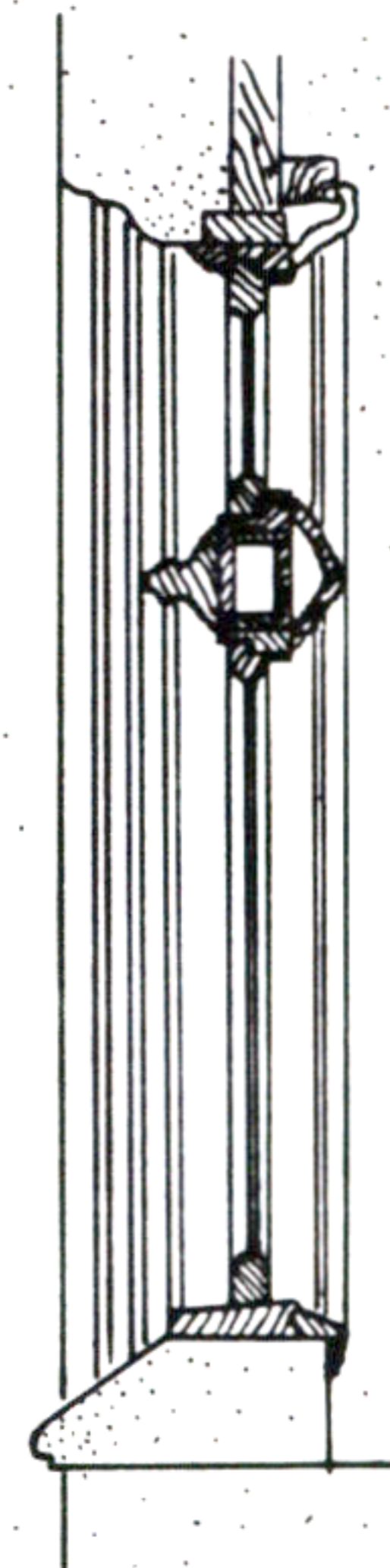
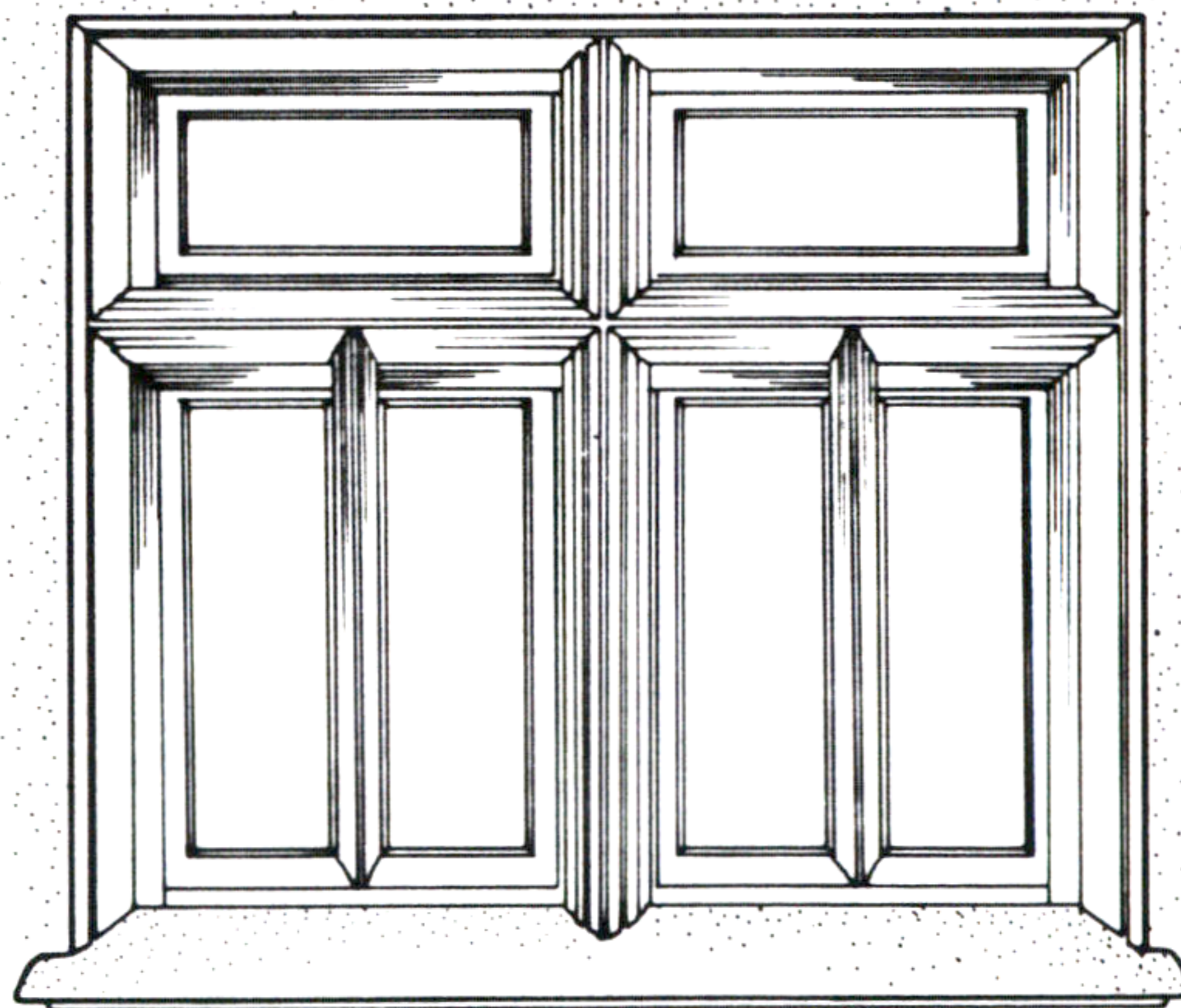
ELEVATION ⑤



SECTION A-A



SECTION B-B

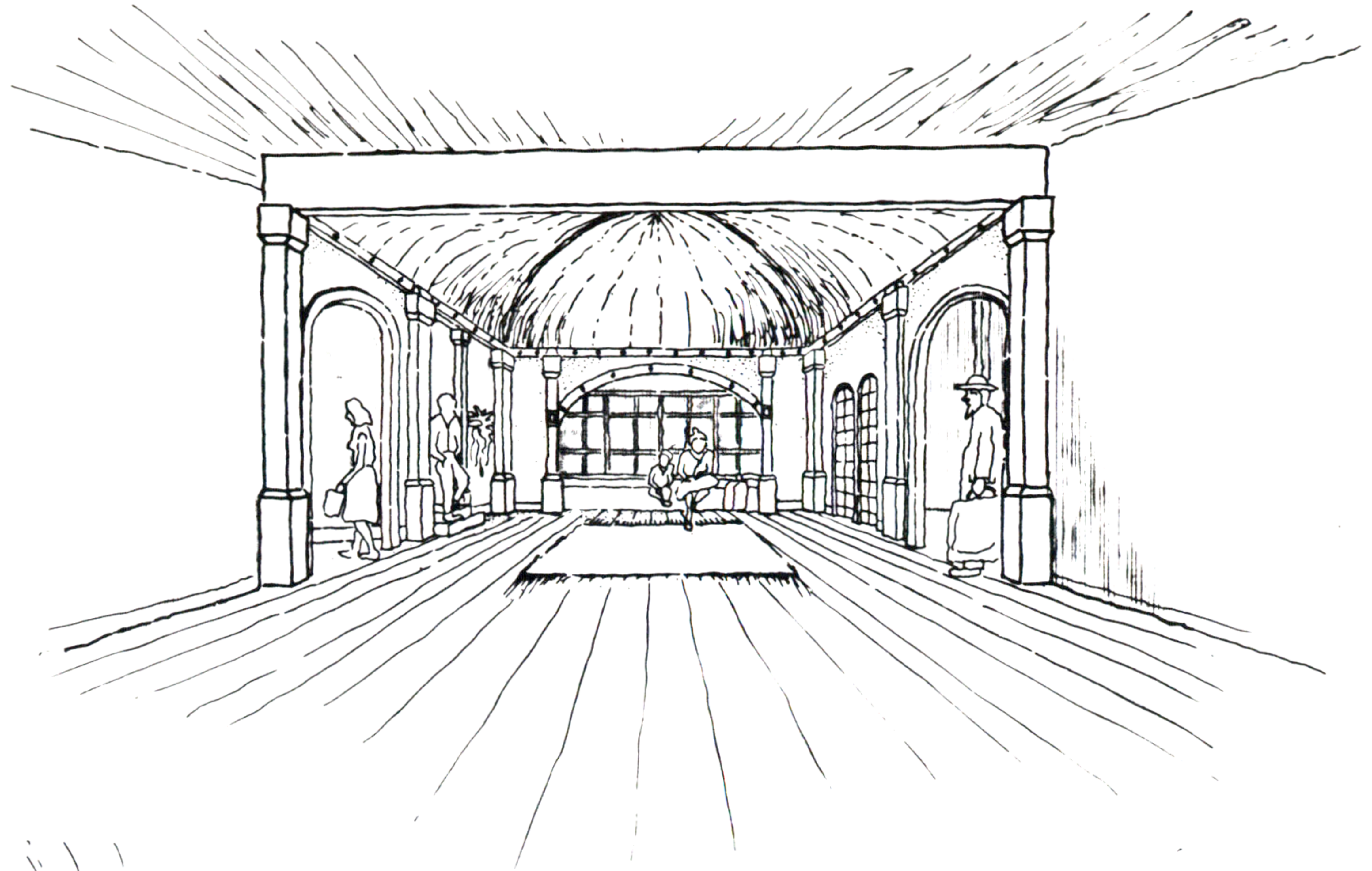


WINDOW DETAIL

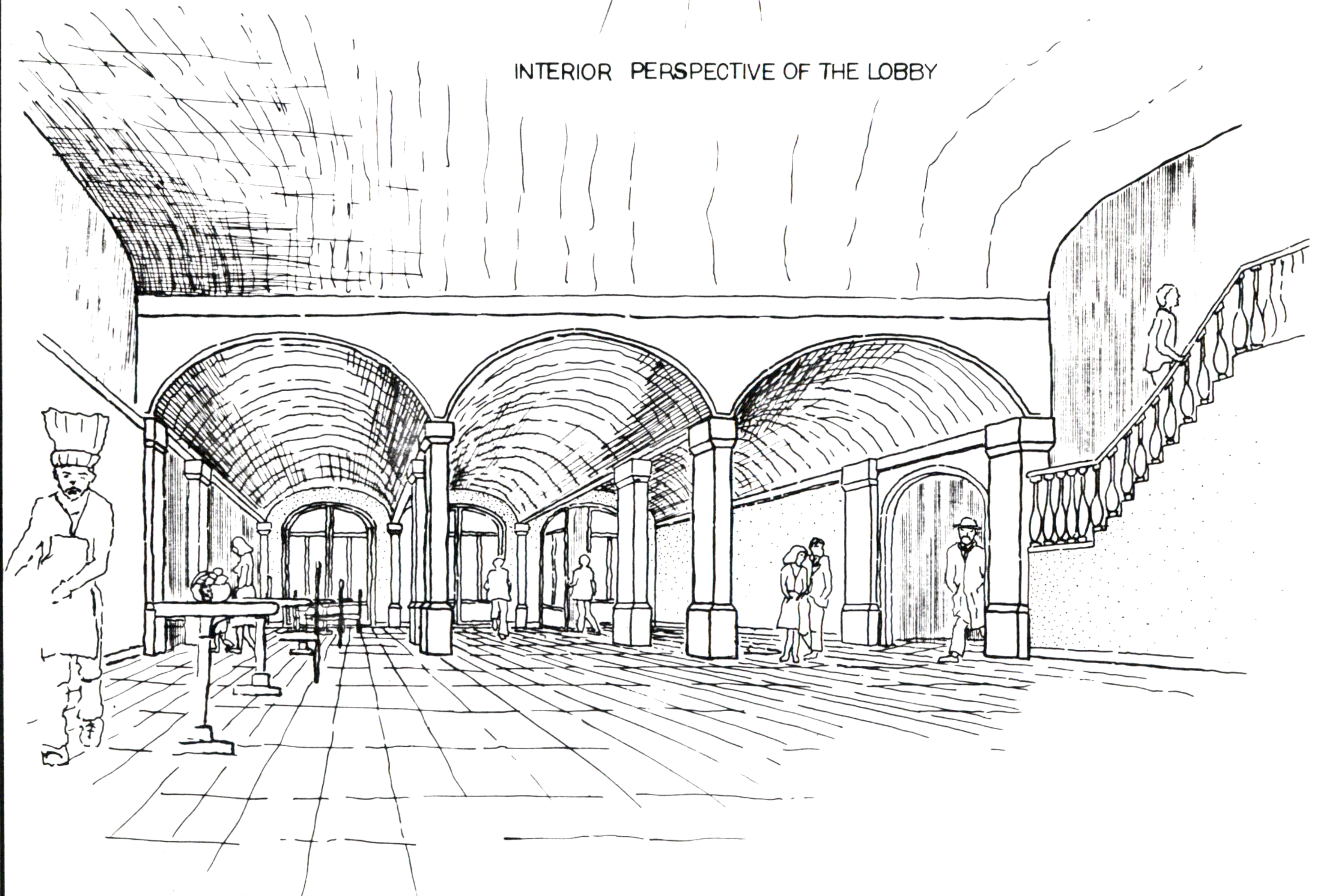


Shohreh Daemi

# 23. HOTEL



INTERIOR PERSPECTIVE OF THE LOBBY



INTERIOR PERSPECTIVE OF THE RESTAURANT

**Shohreh Daemi**