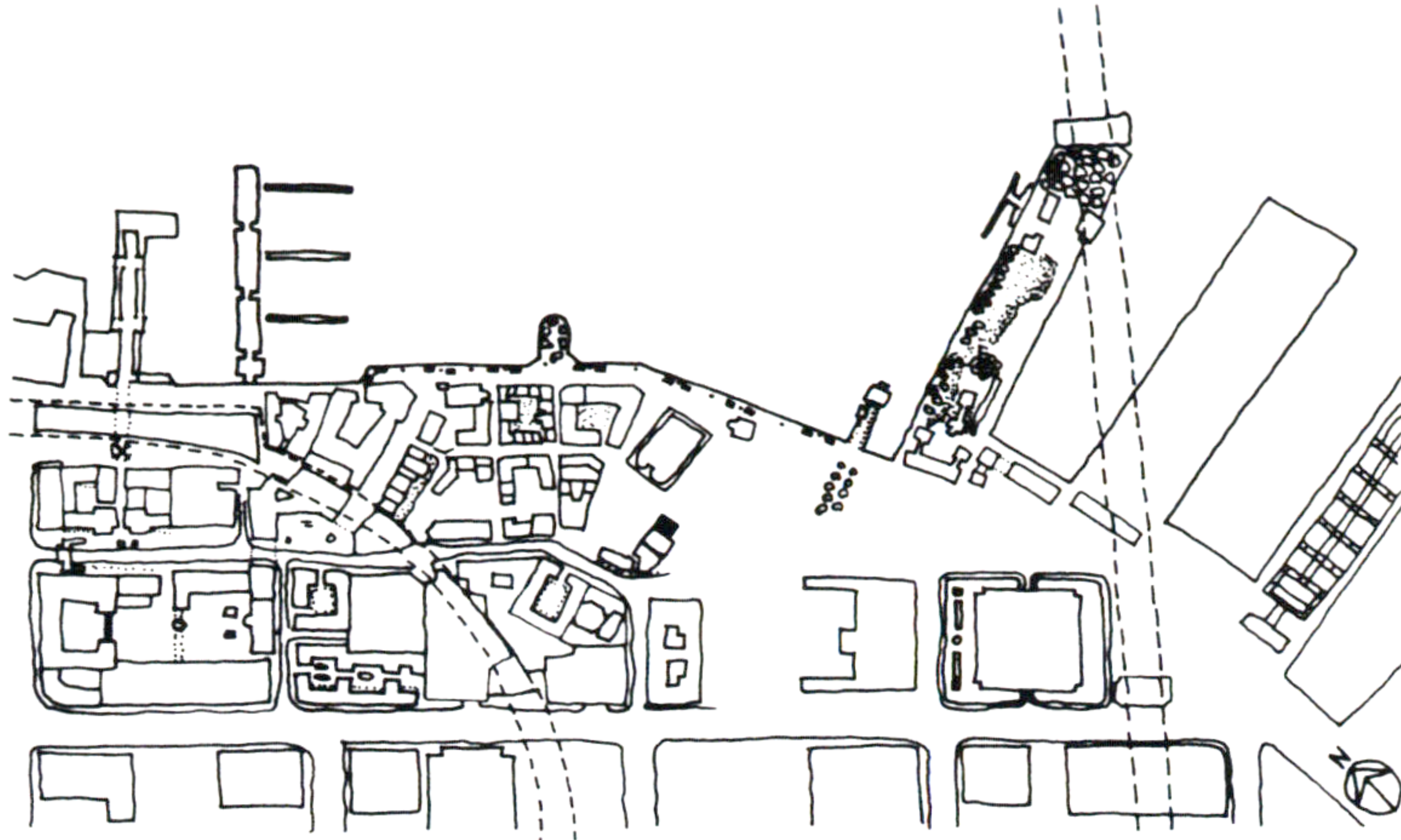


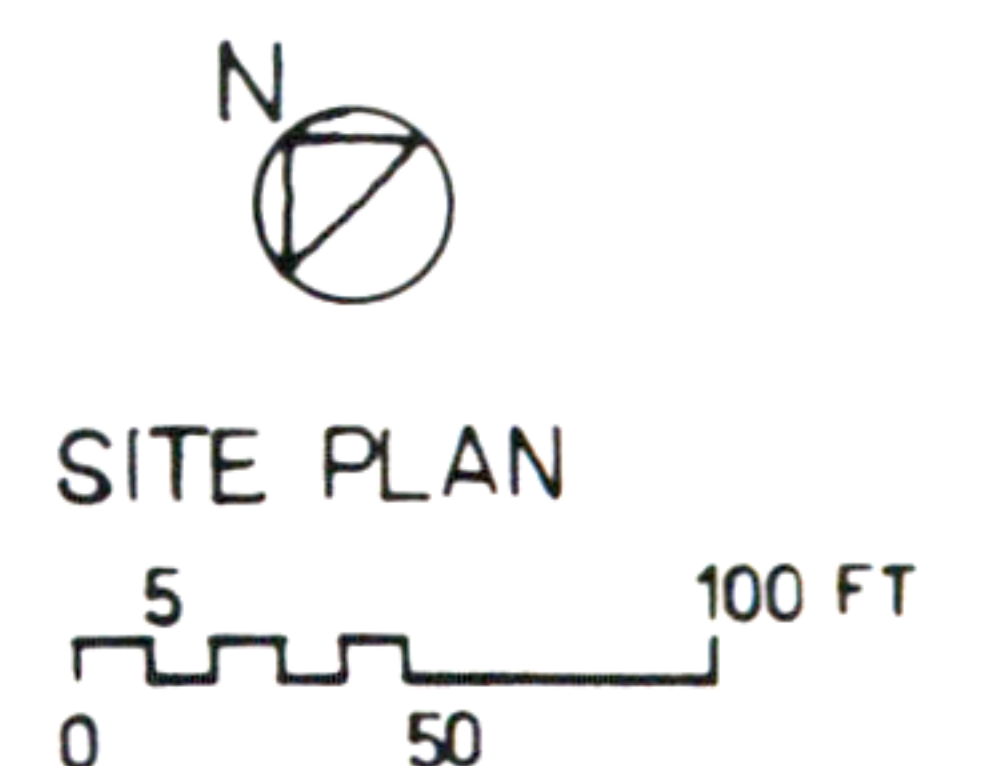
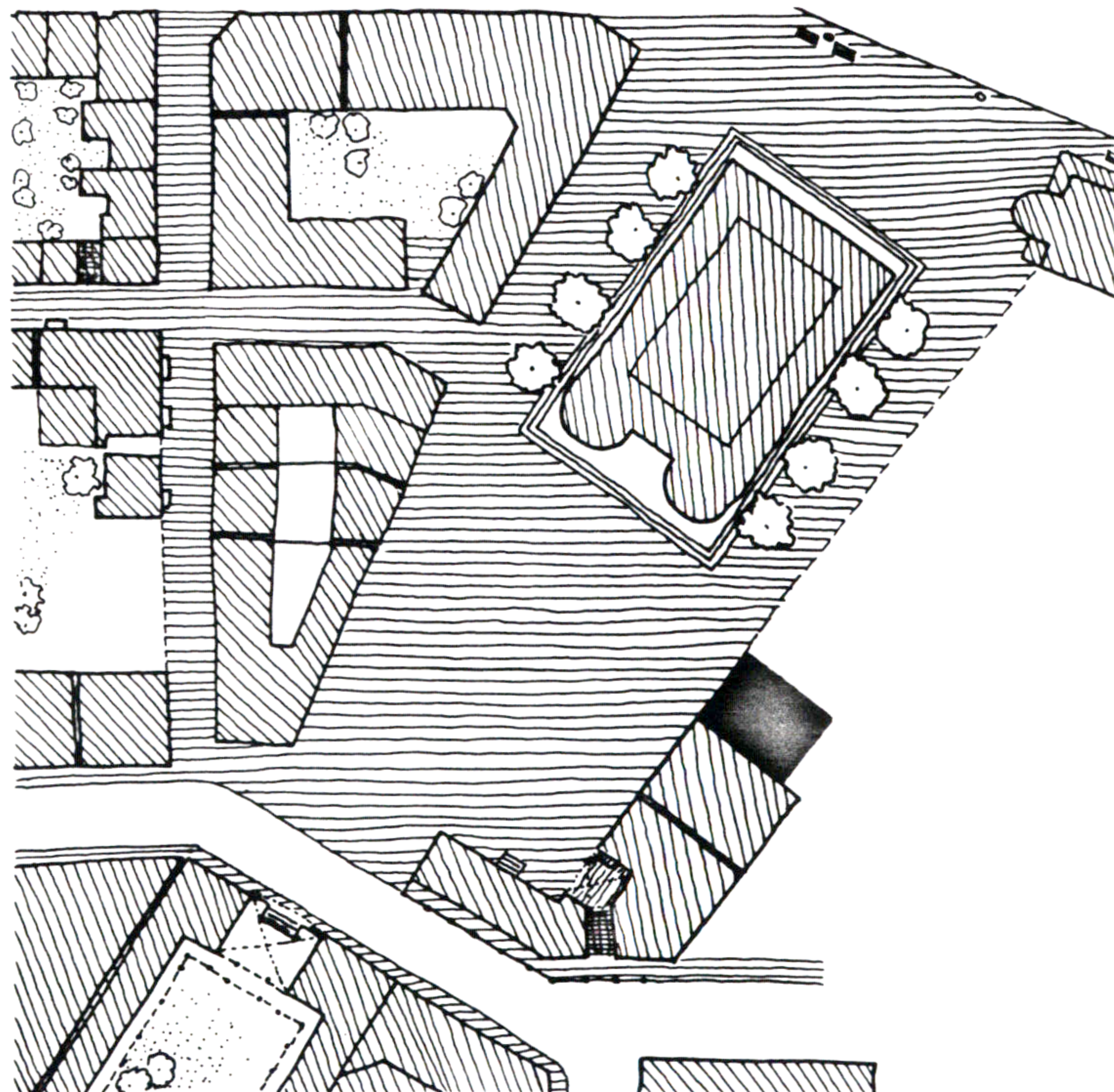
## 62. APARTMENTS



RESPONDING TO THE NEED FOR HOUSING AND TO SOLIDIFY THE EDGE OF THE PUBLIC SQUARE FURTHER, I PROPOSE A FIVE STORY BUILDING WITH FIRST AND SECOND FLOORS FOR SHOPS AND THE REMAINING THREE FLOORS FOR APARTMENTS ON THE SOUTH EDGE OF THE SQUARE LOOKING DIRECTLY ON TO IT.

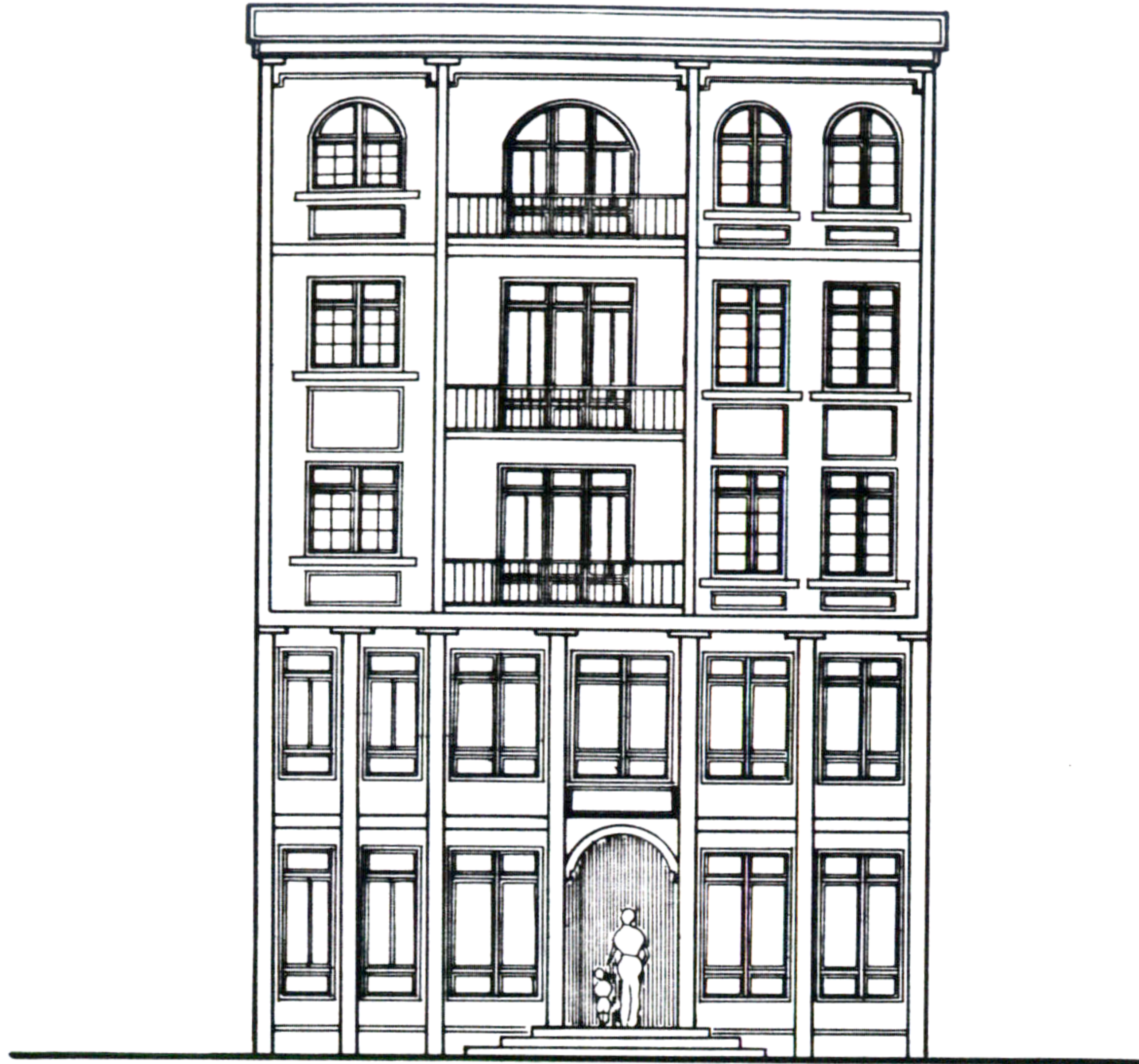
THE SHOPS CONSIST OF A TANNERY WHICH OCCUPIES ITS UPPER FLOOR AS WELL WITH A DIRECT VERTICAL CIRCULATION, AND A TAILOR WITH BROCHURE AND POSTER DESIGNERS ON TOP OF IT.

SINCE THE PUBLIC SQUARE IS ENVISIONED AS A PLACE MOSTLY FOR MEMBERS OF THE COMMUNITY THEMSELVES RATHER THAN TRANSIENTS, THIS BUILDING IS TO RESPOND DIRECTLY TO THIS NEED BY ATTRACTING PEOPLE TO THE SQUARE WHO HAVE A SENSE OF BELONGING TO IT RATHER THAN TOURISTS.

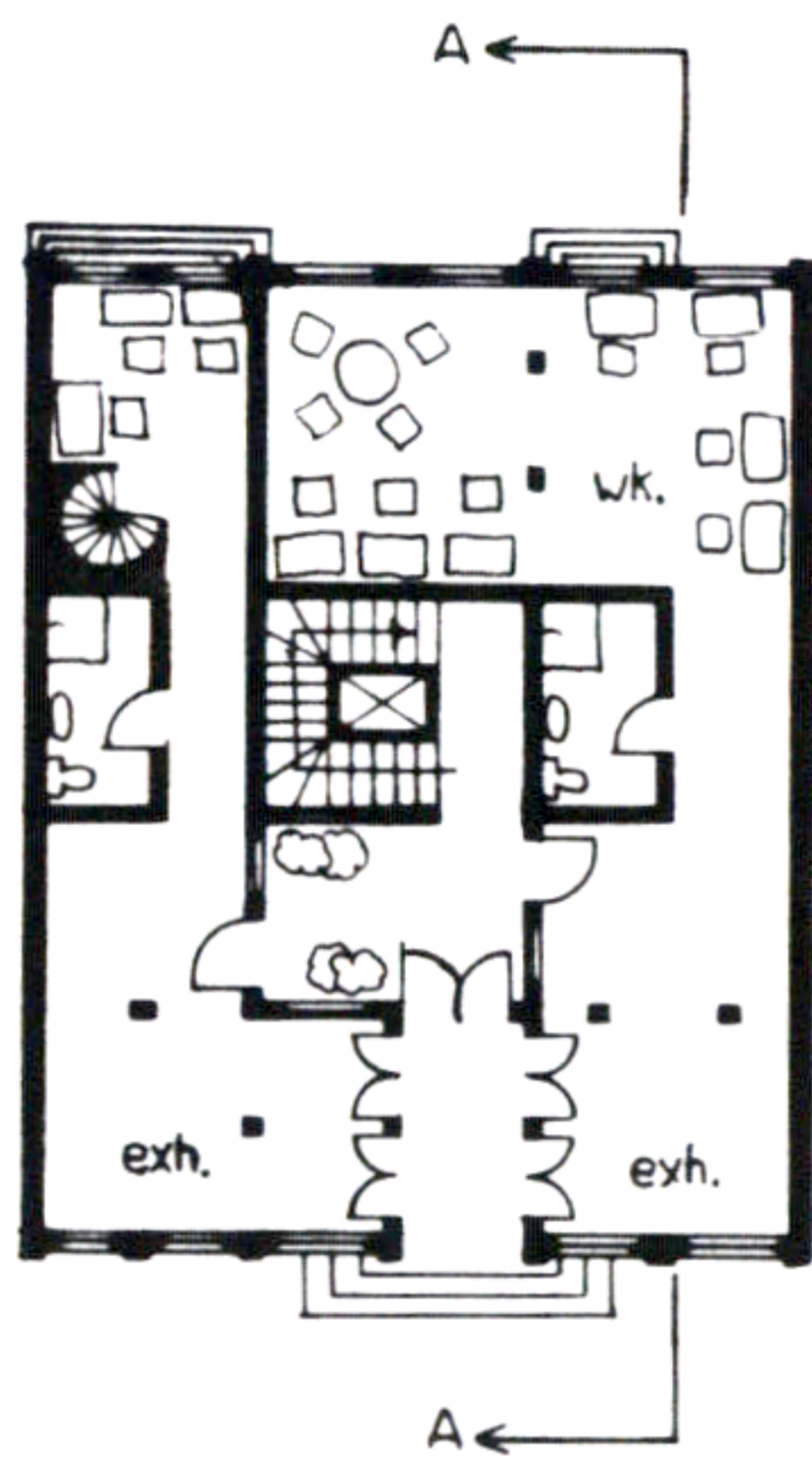


**Shohreh Daemi**

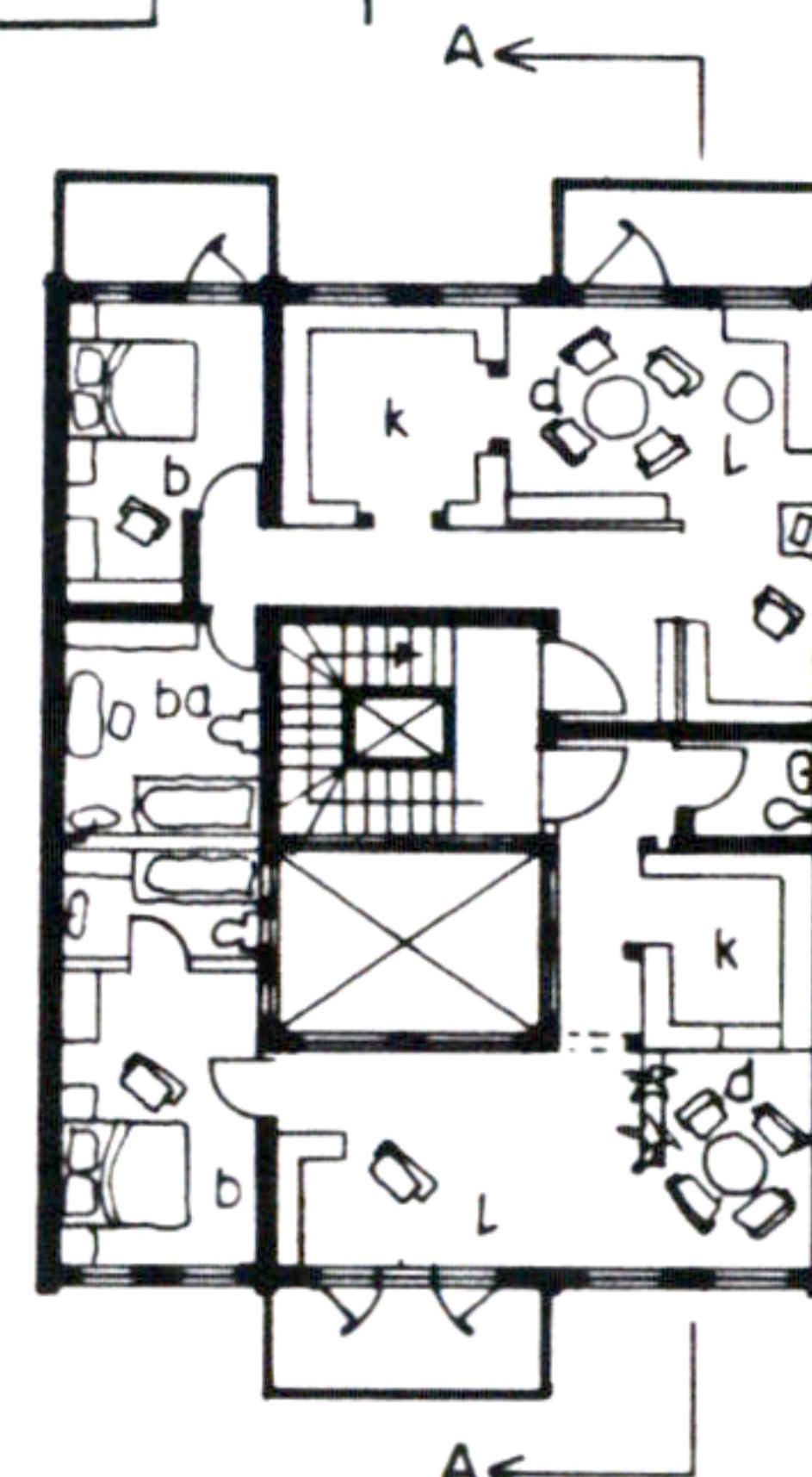
# 62. APARTMENTS



NORTH ELEVATION

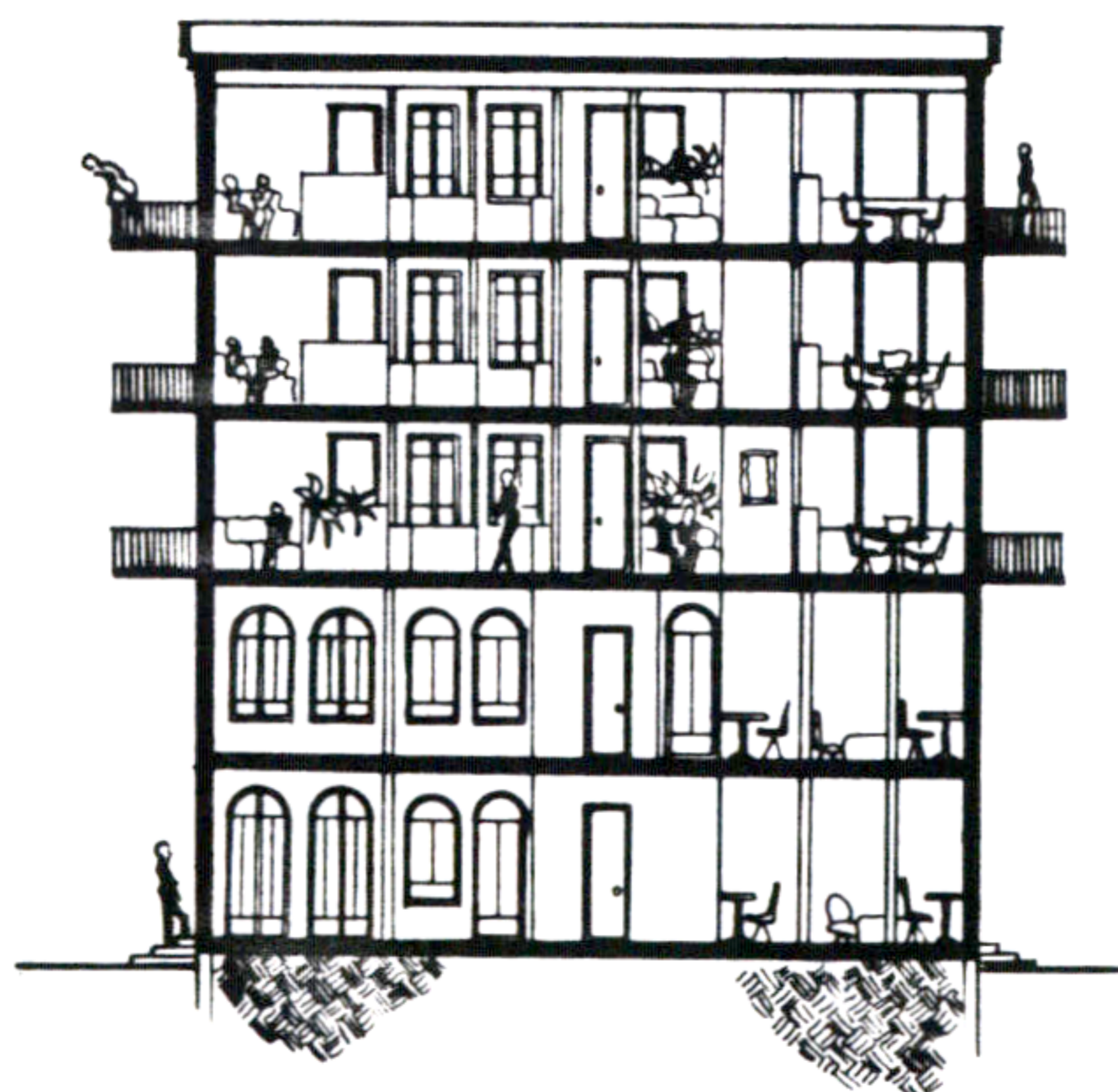


FLOOR 1



FLOOR 3\_4\_5

0 10 20



SECTION A-A



SOUTH ELEVATION

Shohreh Daemi