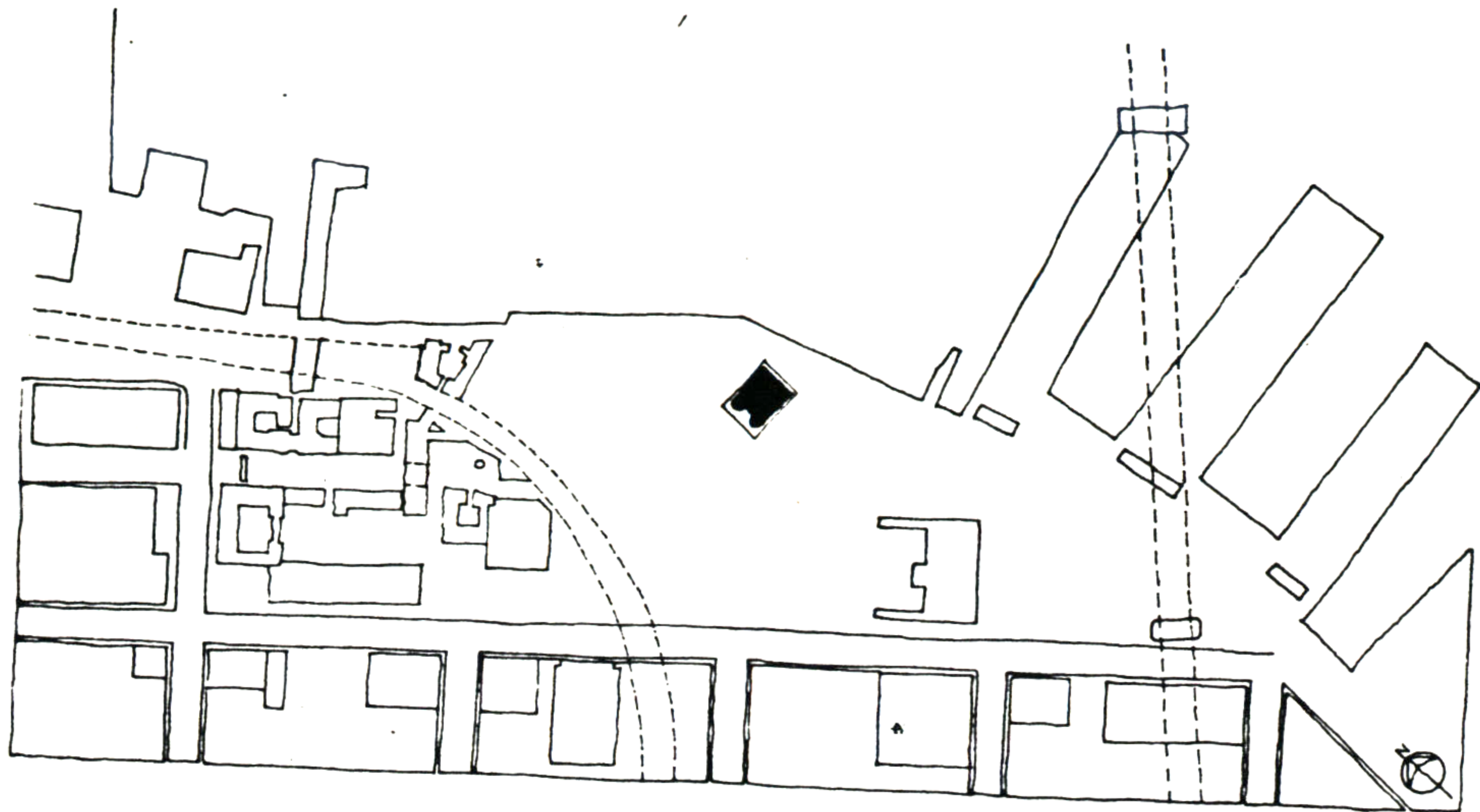


13. BATH



PROJECT # 13

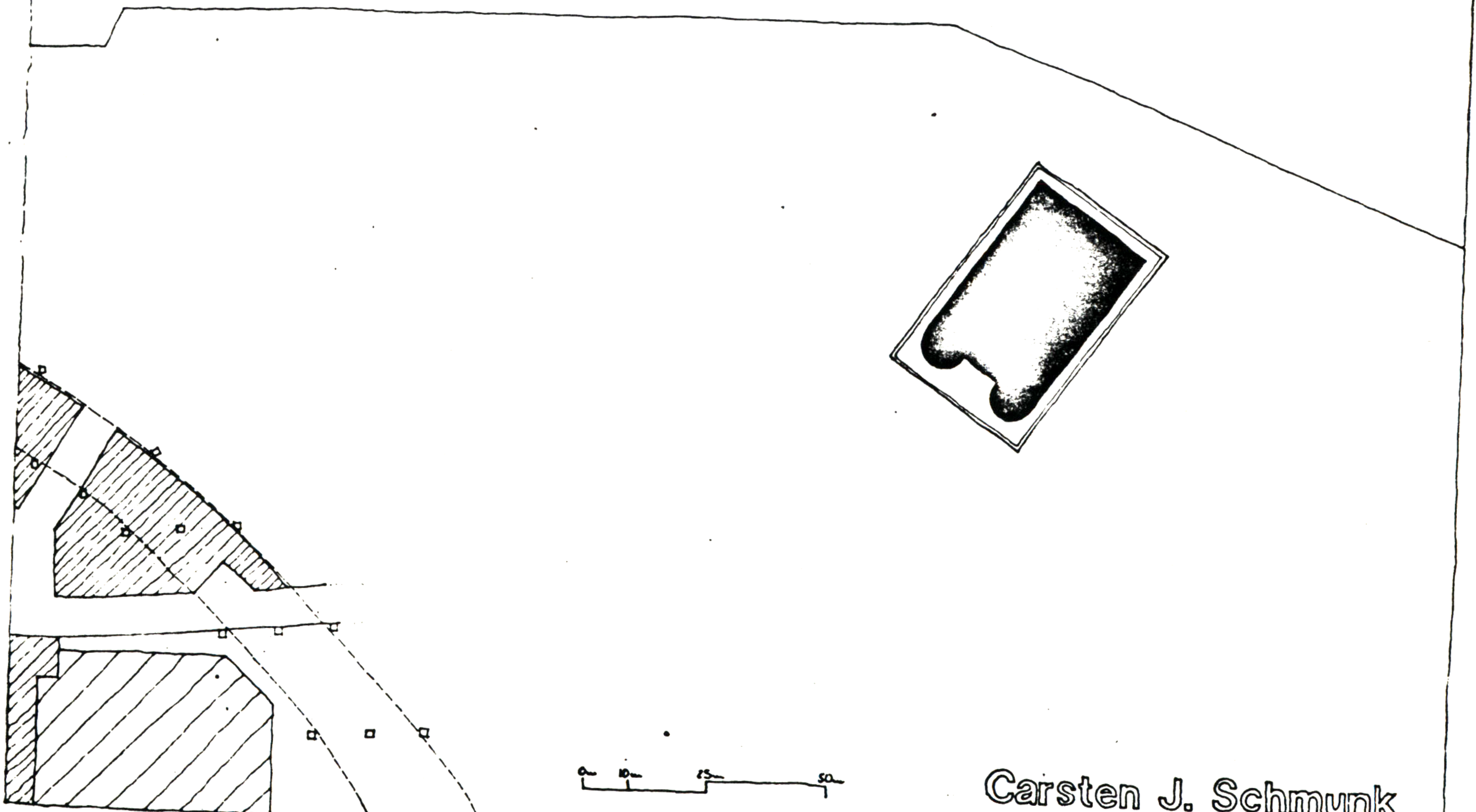
THE BATH

THE INTENTION IS TO HAVE A BATH FACING OUT ON THE BAY WATERS. TO RELATE THE BUILDING TO THE COMMUNITY IT HAS IT'S ONLY ENTRANCE ON THE OPPOSITE, INLAND SIDE, AND IS POSITIONED AT AN ANGLE NOT PARALLEL TO THE WATER'S EDGE.

IT IS INTENDED TO INITIATE AN EMERGING "CENTER" IN THE COMMUNITY. LOCATED ON A SQUARE, THE STRUCTURE IS FREESTANDING ON ALL FOUR SIDES. IN CROSS SECTION IDEALLY SHAPED TO INDUCE IT'S CENTERING FUNCTION:

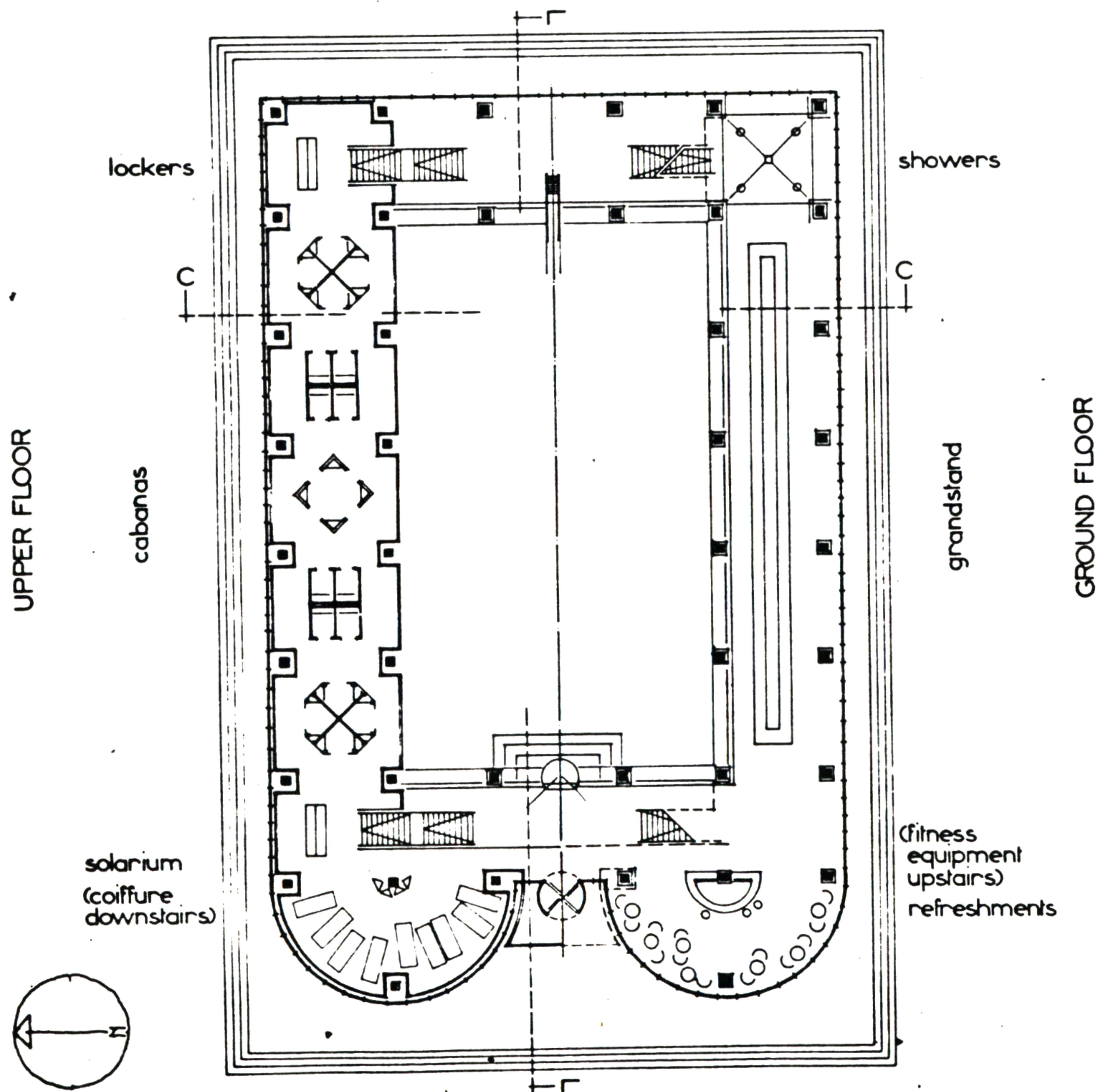
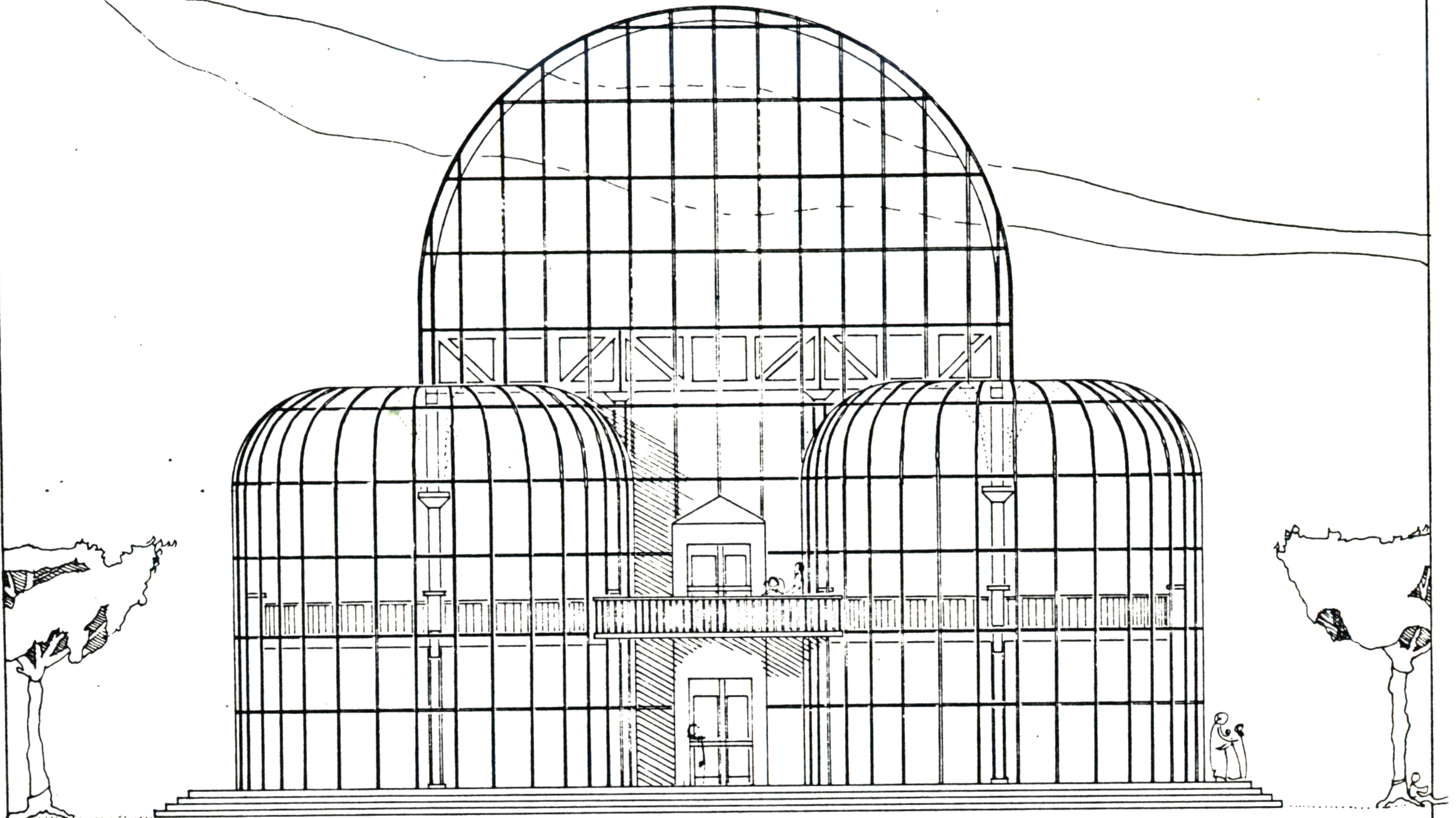
THE LIGHT, ALMOST "FRAGILE" STEEL AND GLASS STRUCTURE RESTS ON A STONE BASE, WHICH HAS STOOPS ALL AROUND. THE SO CALLED "SWIM OPERA" CONTAINS A 25-YARD-POOL, TRIBUNES ALONG EITHER SIDE OF IT, A REFRESHMENT BAR, AND A COIFFURE ROOM ON THE GROUND FLOOR; ON THE UPPER LEVEL A NUMBER OF FREESTANDING "CABANAS," FITNESS EQUIPMENT, AND A SOLARIUM.

(THE NECESSARY TECHNICAL FACILITIES ARE BURIED IN THE BASE)



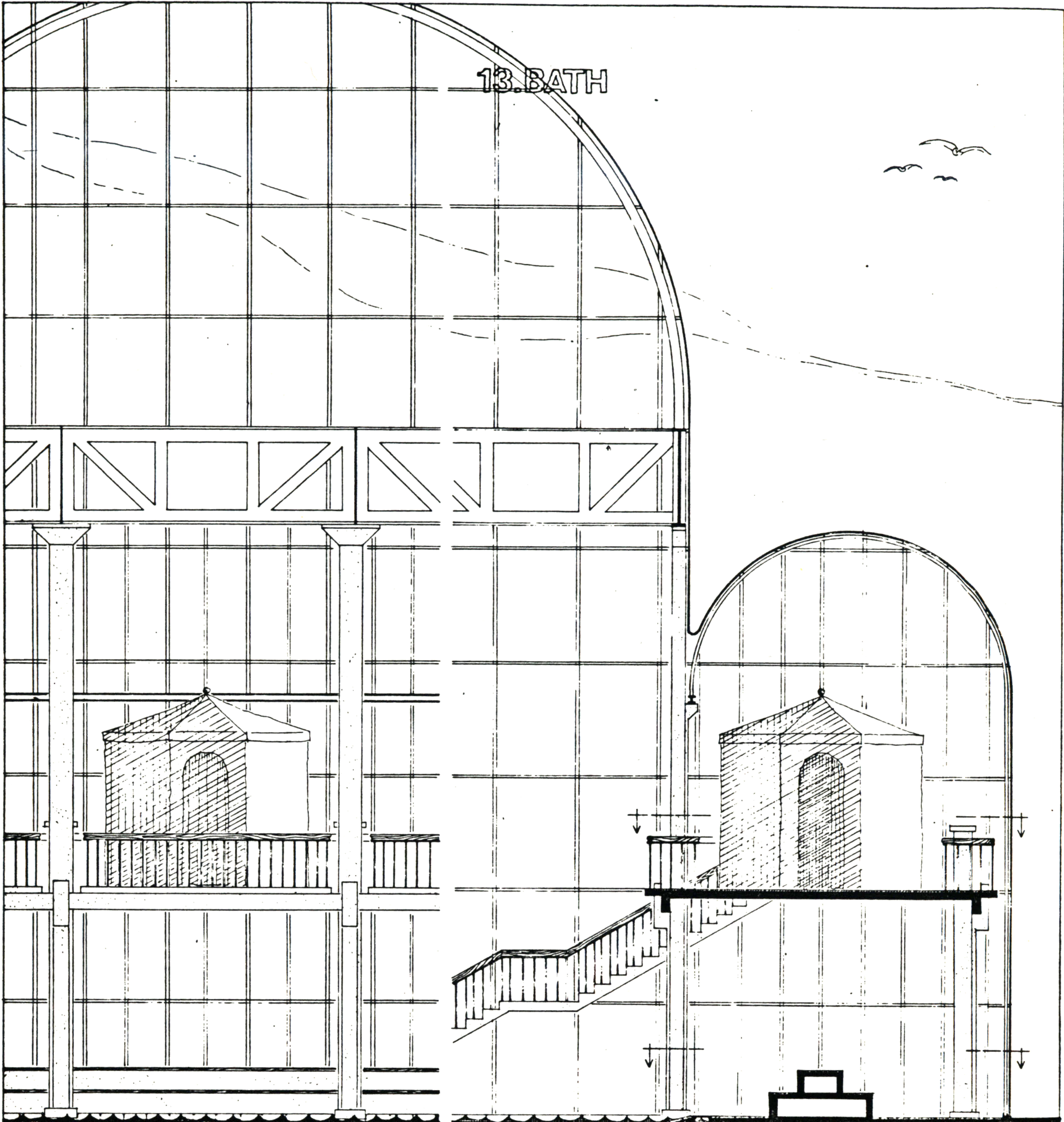
Carsten J. Schmunk

13. BATH

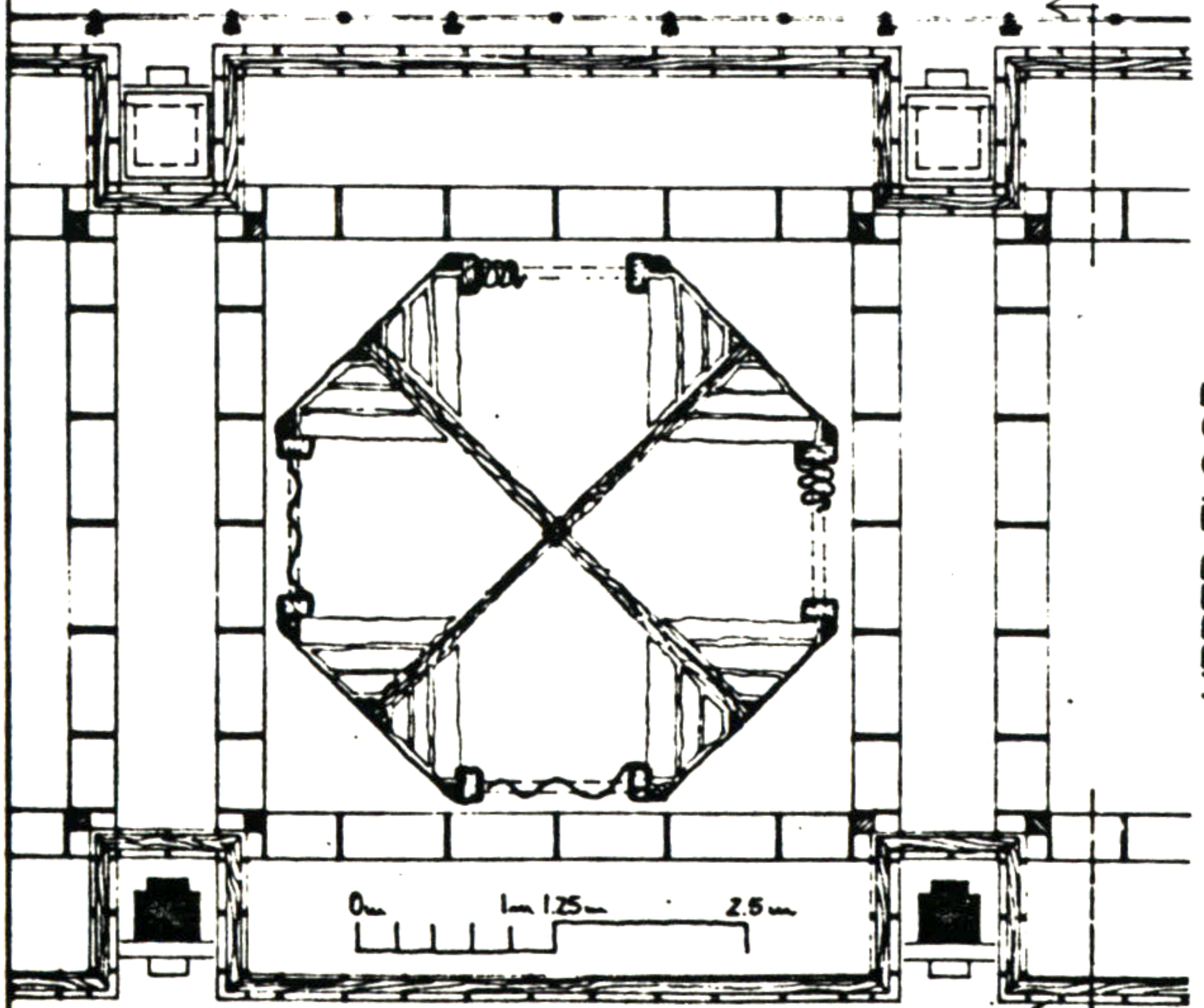


Carsten J. Schmunk

13. BATH

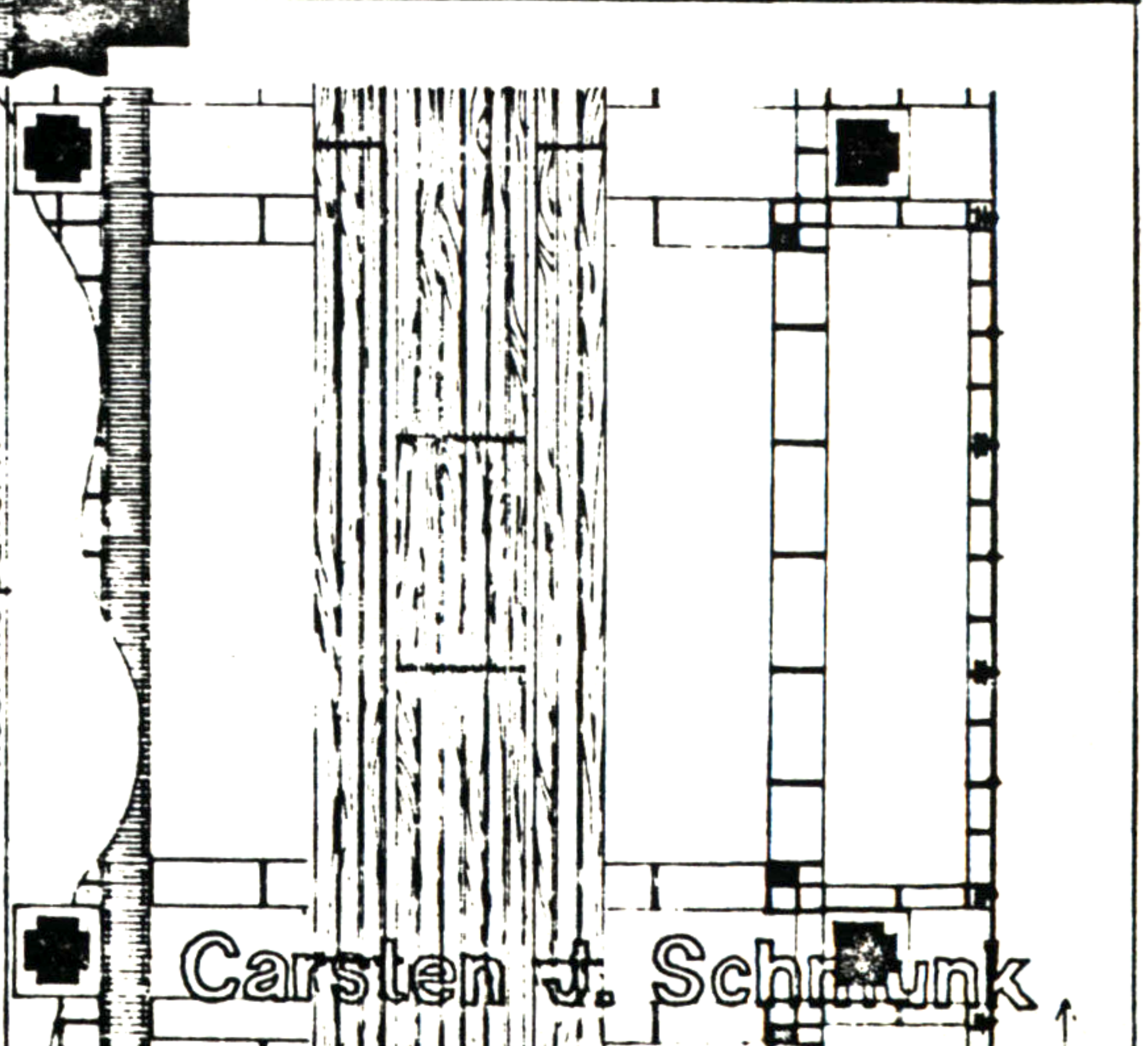


ELEVATION / SECTION



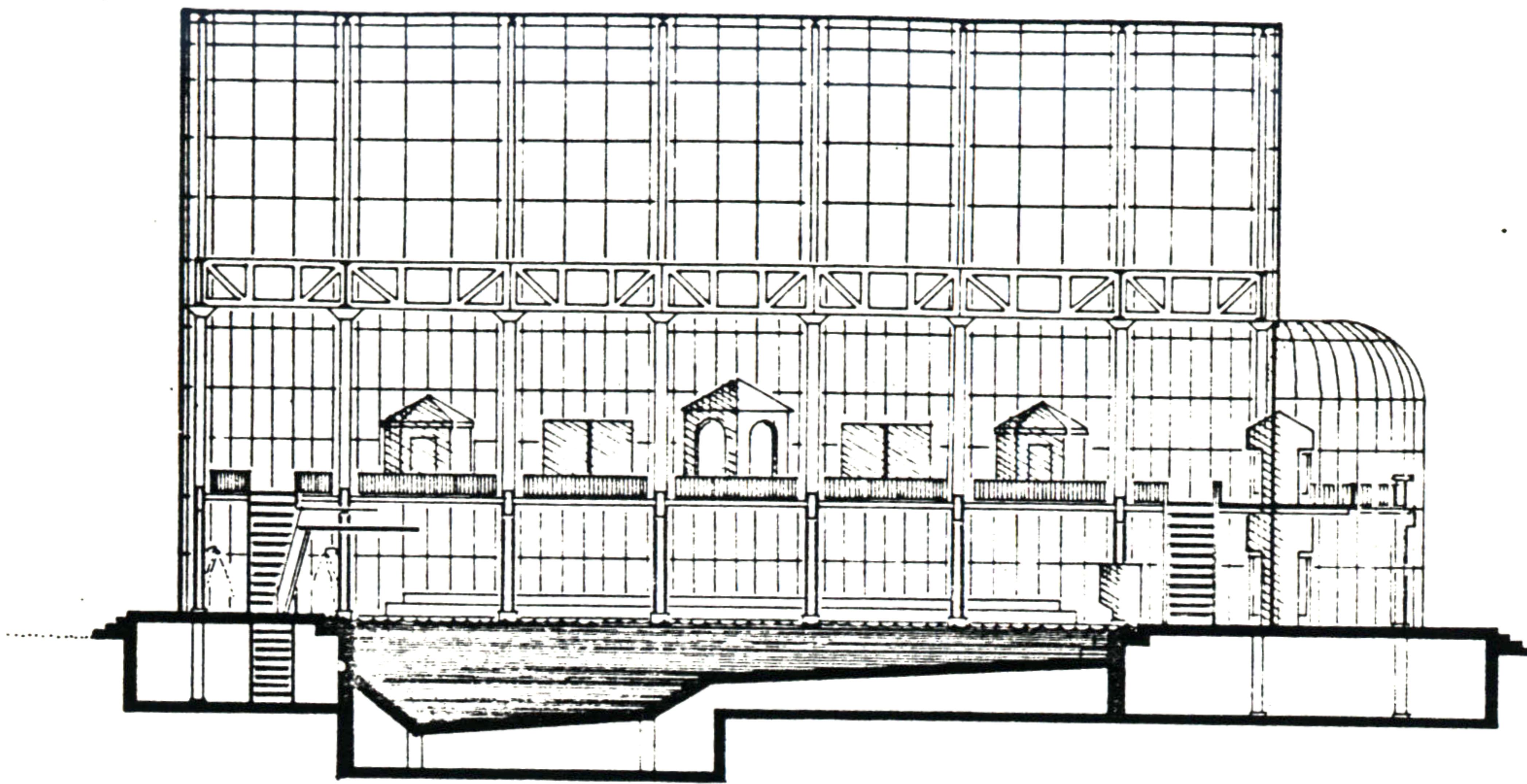
UPPER FLOOR
cabana: wood, canvas
handrail: wood, iron
floor: tile pattern

GROUND FLOOR
grandstand: concrete, wood
gutter: iron
floor: tile pattern

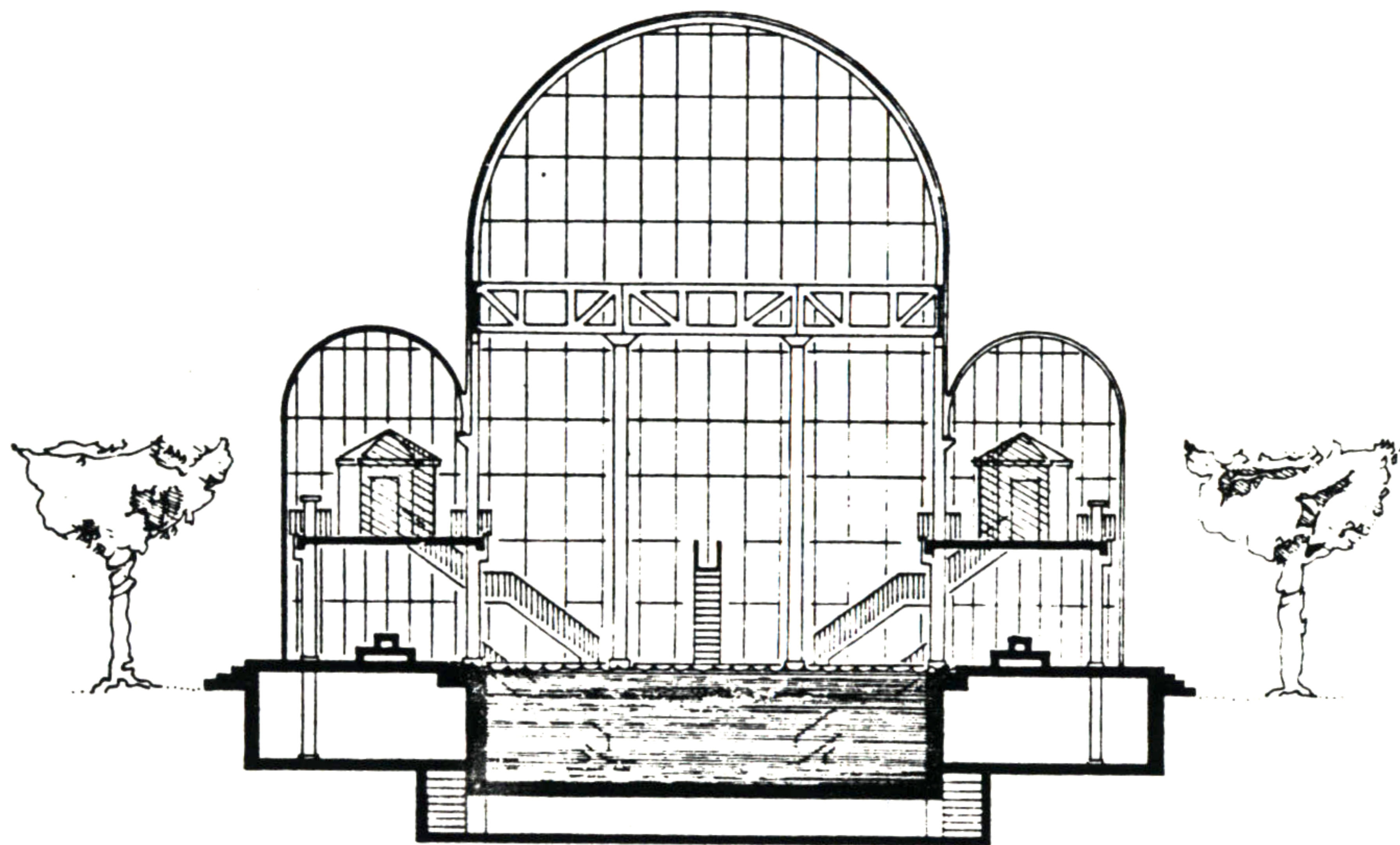


Carsten J. Schunk

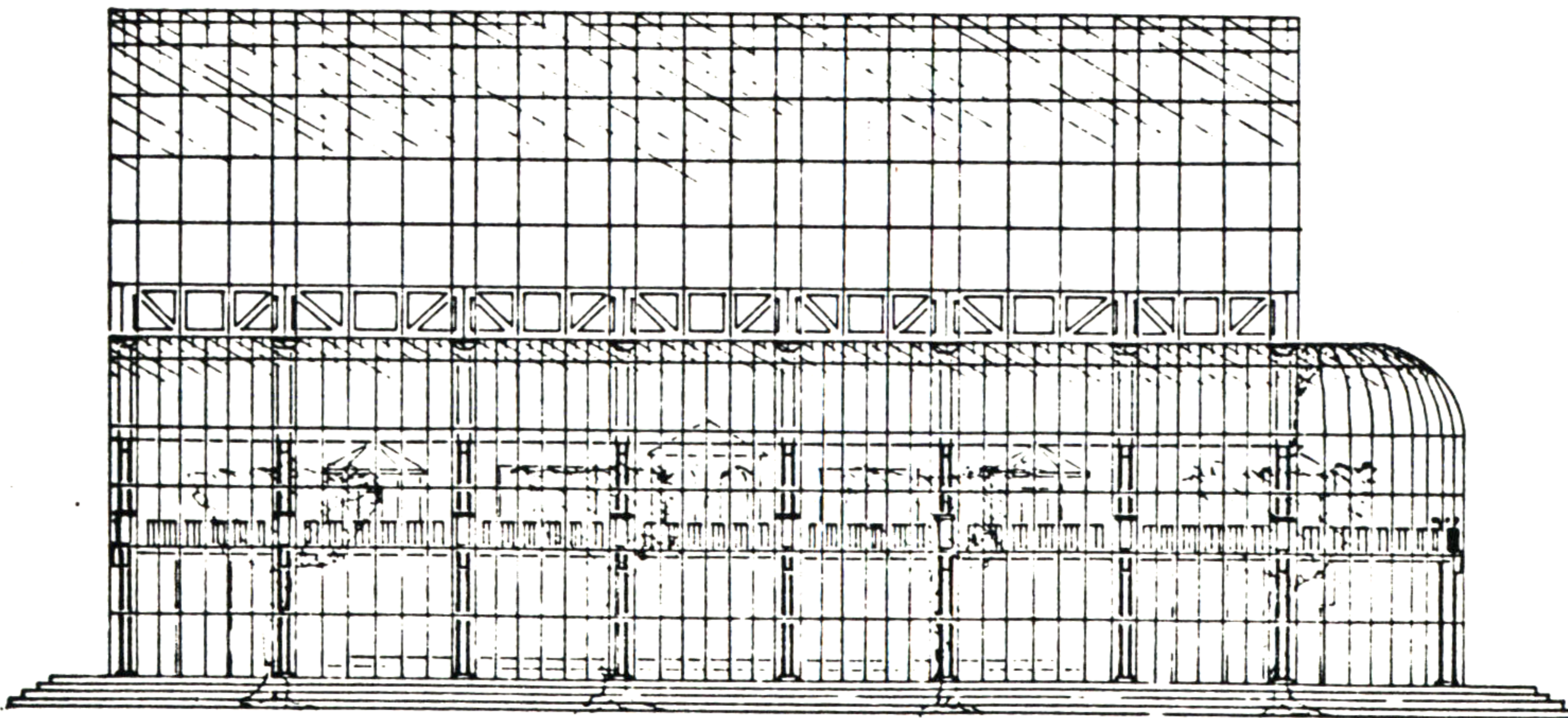
13. BATH



SECTION LL



SECTION CC



Carsten J. Schmunk