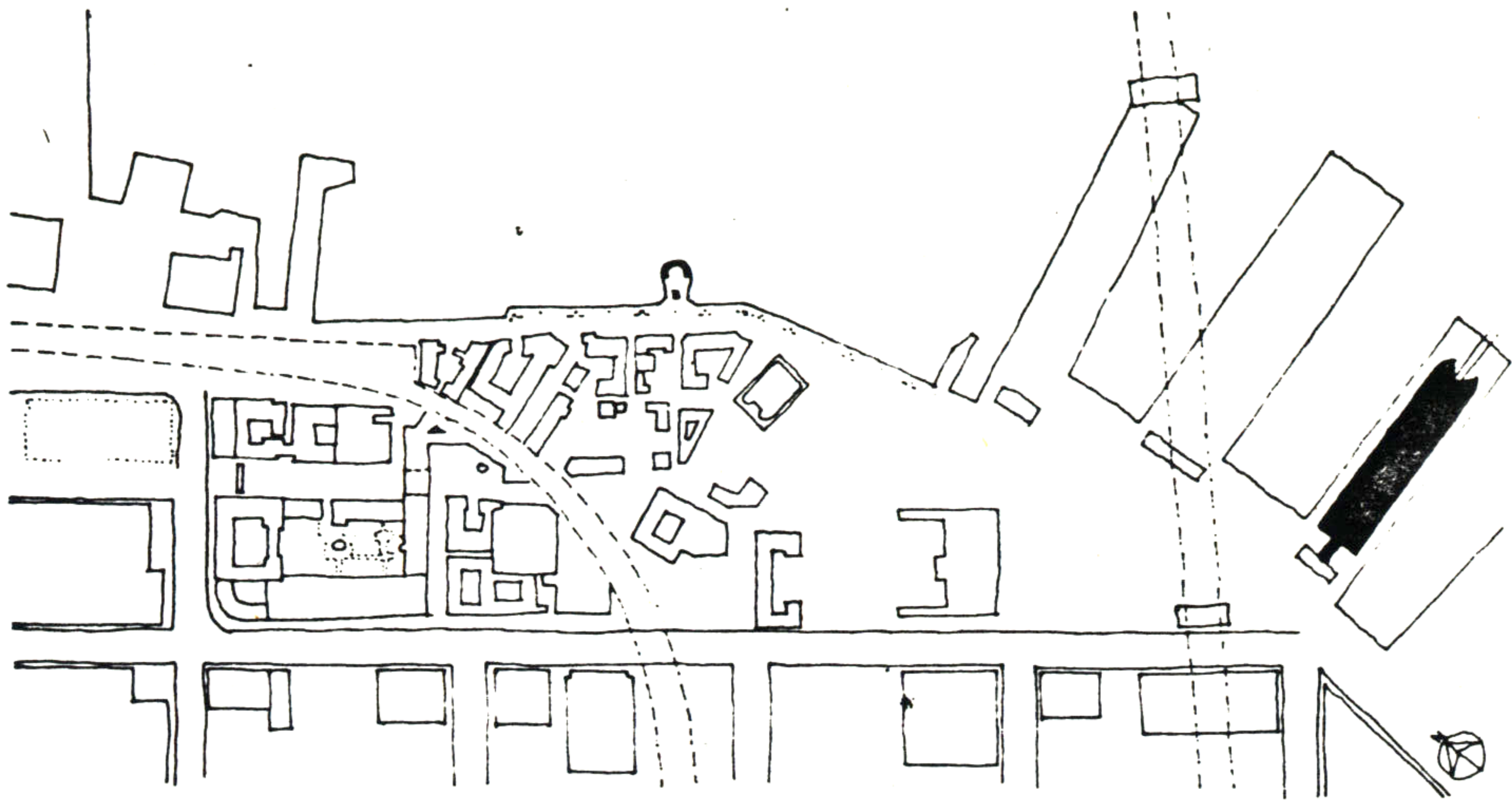


# 43. SHIP REPAIR



# 43 SHIP REPAIR

PIER 28 SHALL BE DEVOTED TO MARITIME SUPPORT INDUSTRY.

IT IS INTENDED TO INSTALL A SHIP REPAIR FACILITY, SERVING PLEASURE BOATS AS WELL AS COMMERCIAL LINERS, AND FISHING VESSELS.

THIS MEANS TO PROVIDE COVERED WORKING SPACES, WHERE MACHINERY CAN BE PUT UP RIGHT NEXT TO A BERTH, AND SOME STORAGE SPACE FOR PARTS, AND MATERIAL.

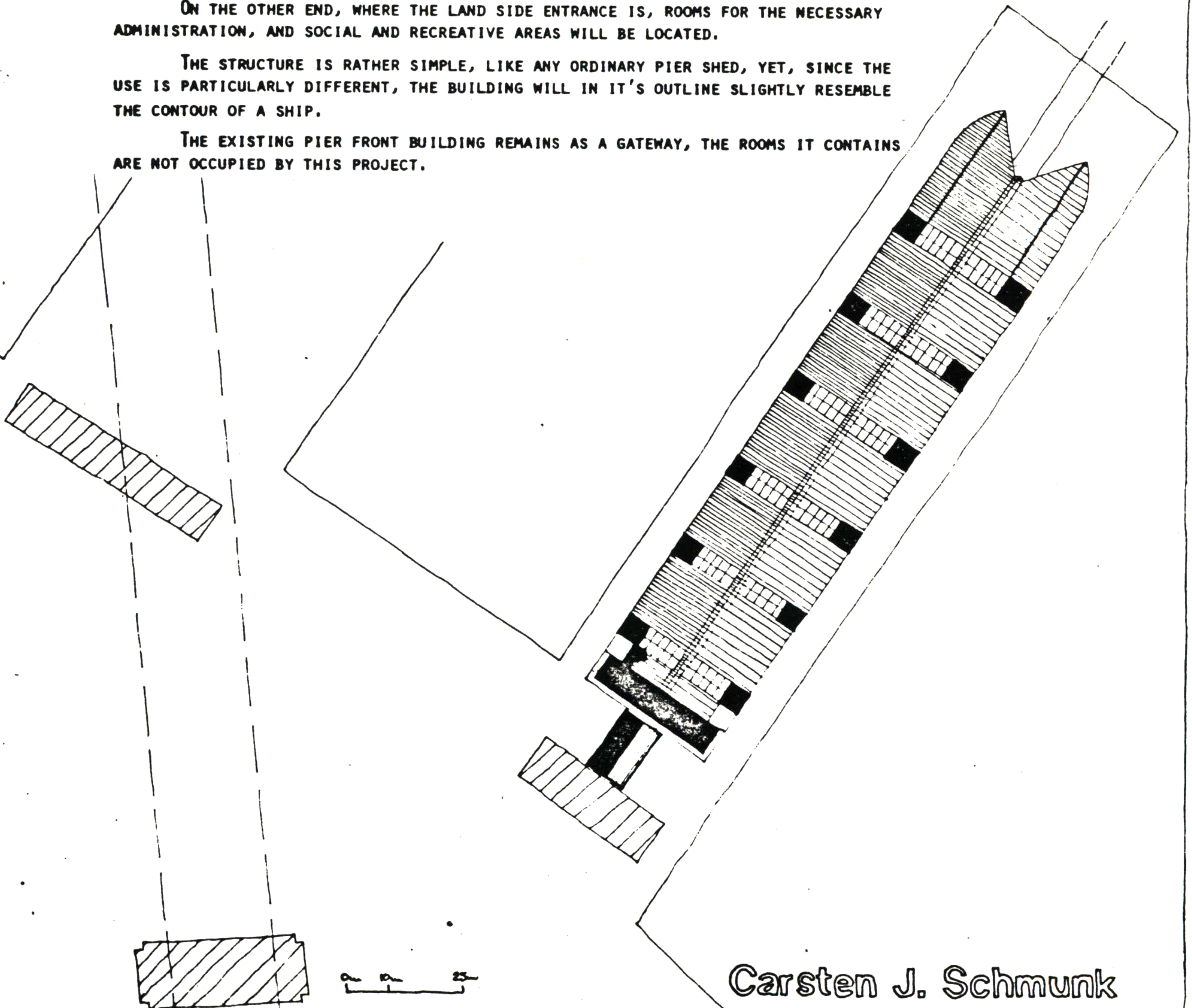
THIS WILL HAPPEN ALTERNATINGLY IN A HUGE, WELL LIT HALL.

FURTHERMORE, A RAIL SLIP, CAPABLE OF HOISTING UP TO 50 FOOT VESSELS, WILL BE AT THE END OF THE PIER.

ON THE OTHER END, WHERE THE LAND SIDE ENTRANCE IS, ROOMS FOR THE NECESSARY ADMINISTRATION, AND SOCIAL AND RECREATIVE AREAS WILL BE LOCATED.

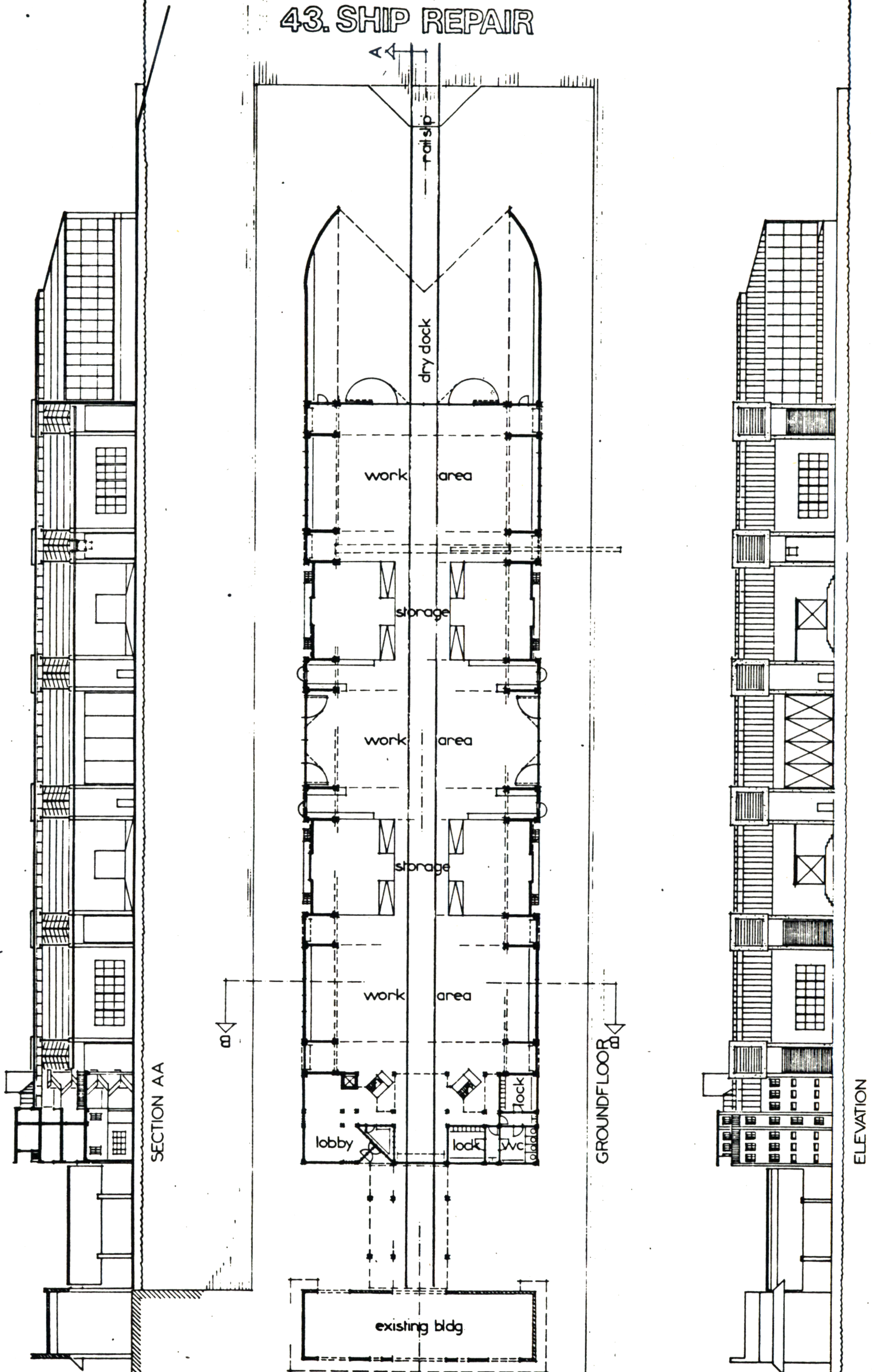
THE STRUCTURE IS RATHER SIMPLE, LIKE ANY ORDINARY PIER SHED, YET, SINCE THE USE IS PARTICULARLY DIFFERENT, THE BUILDING WILL IN IT'S OUTLINE SLIGHTLY RESEMBLE THE CONTOUR OF A SHIP.

THE EXISTING PIER FRONT BUILDING REMAINS AS A GATEWAY, THE ROOMS IT CONTAINS ARE NOT OCCUPIED BY THIS PROJECT.



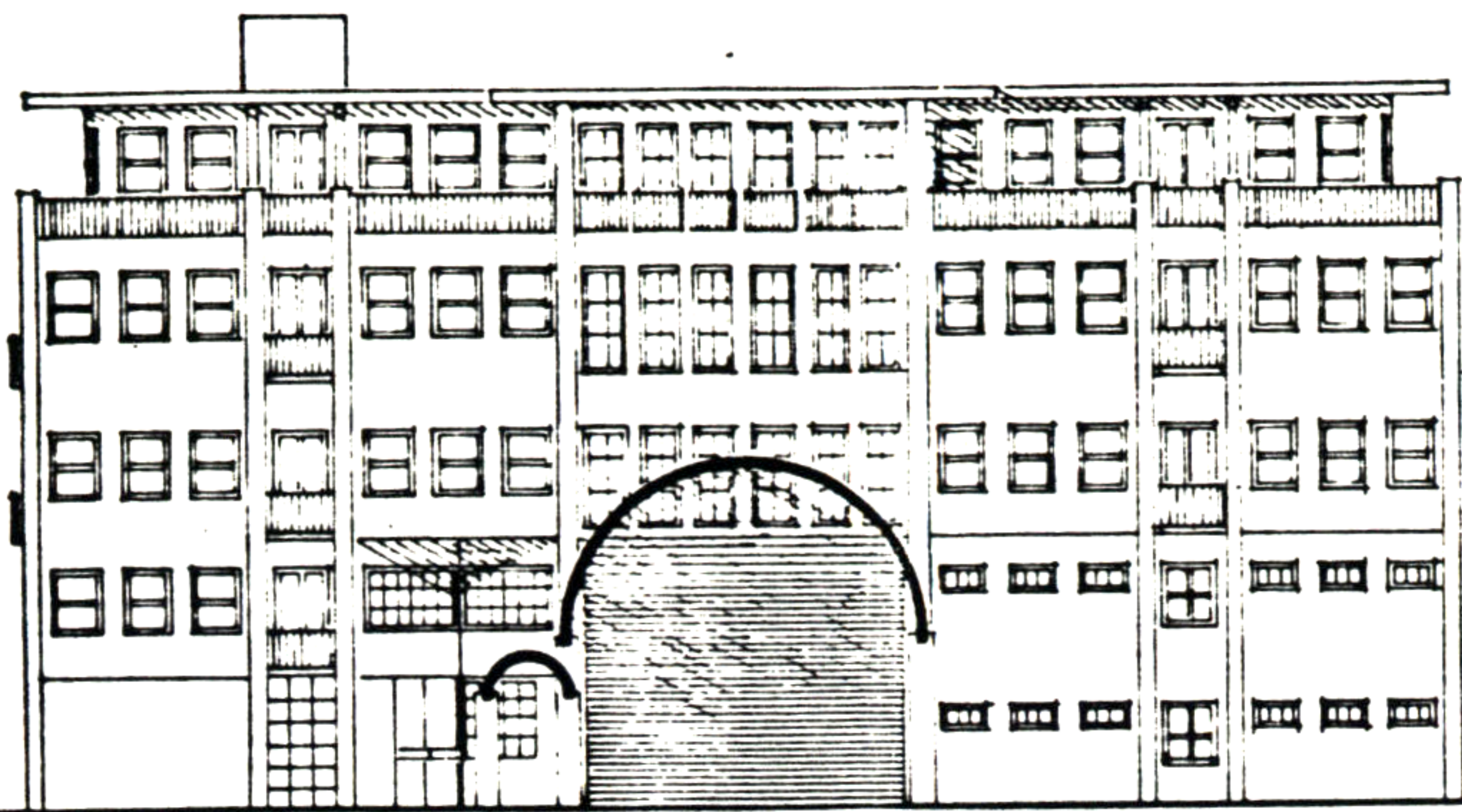
Carsten J. Schmunk

# 43. SHIP REPAIR

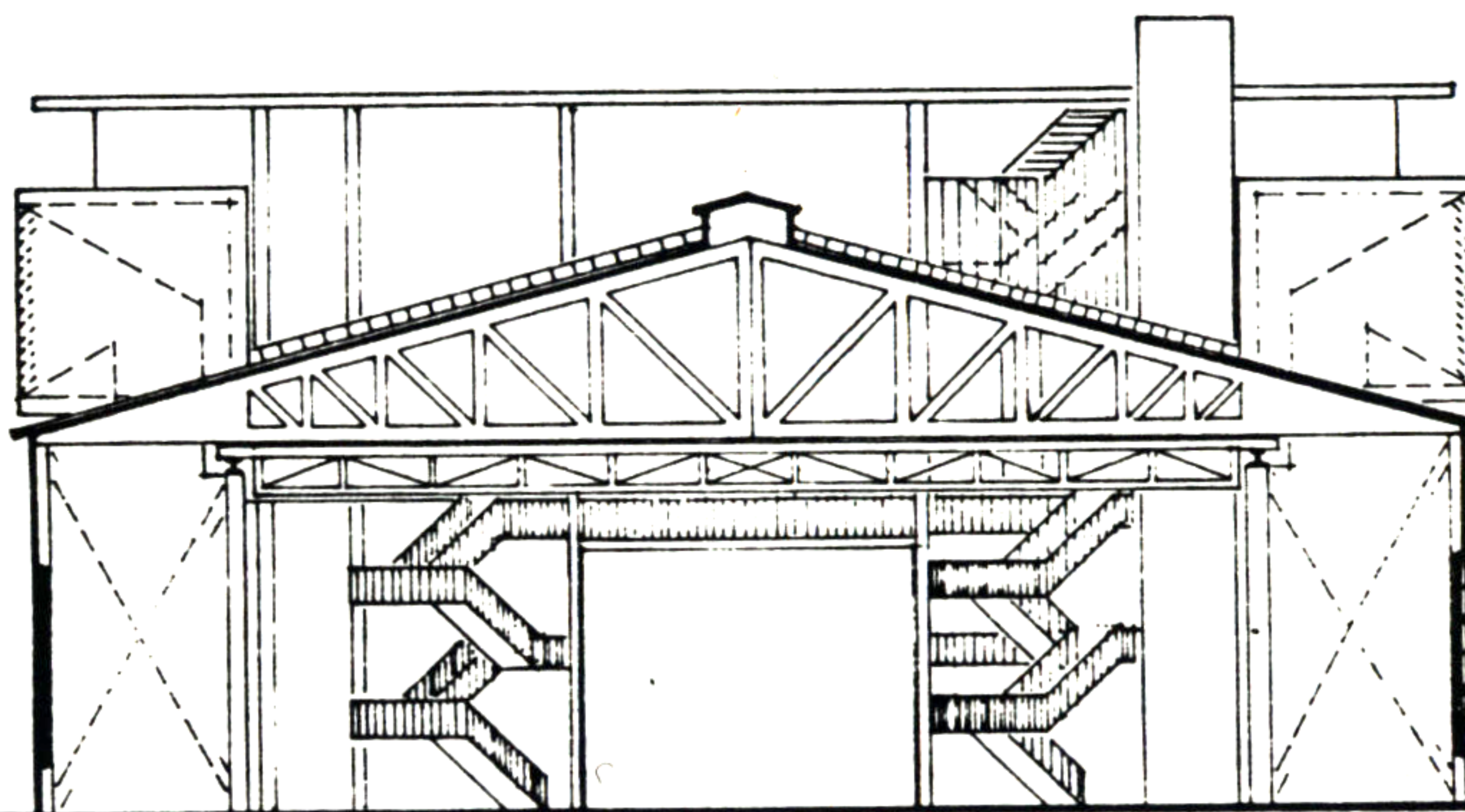


Carsten J. Schmunk

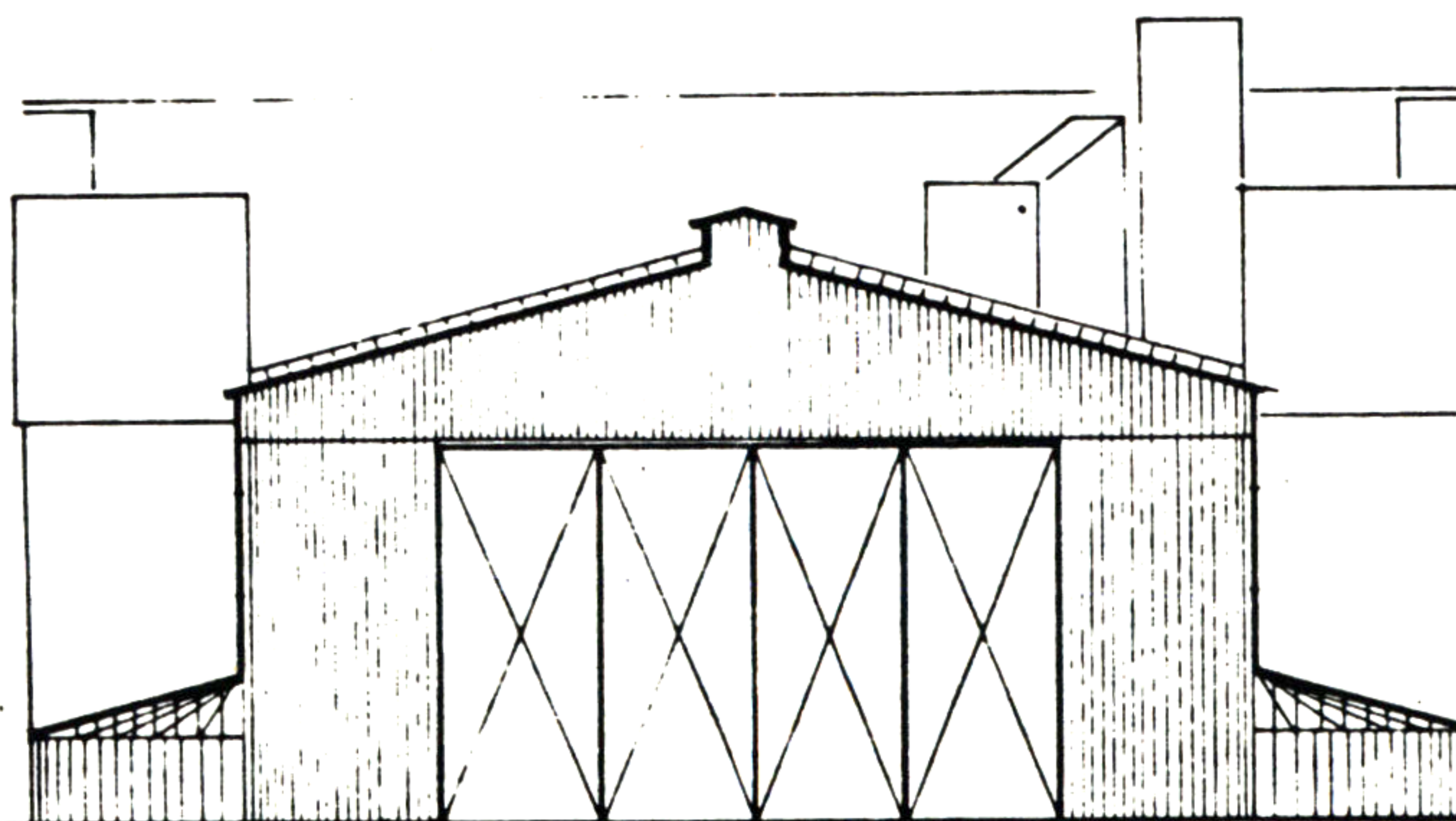
# 43. SHIP REPAIR



FRONT



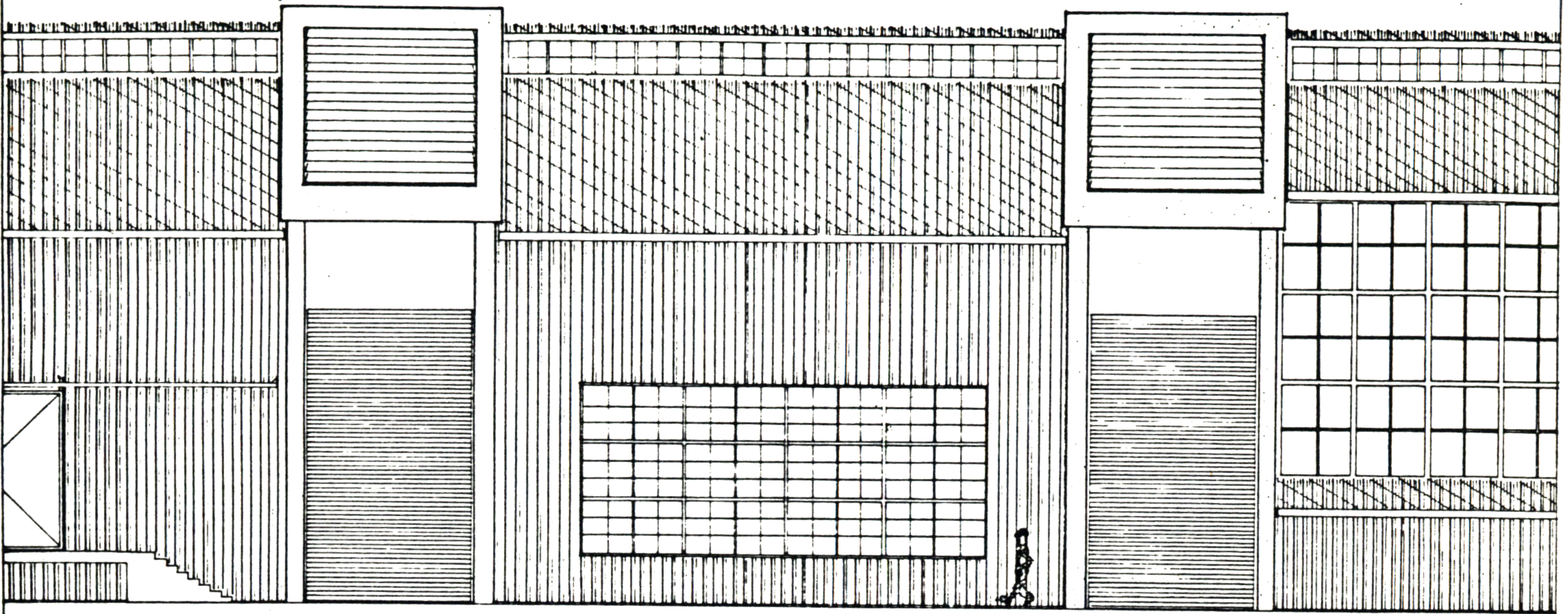
SECTION BB



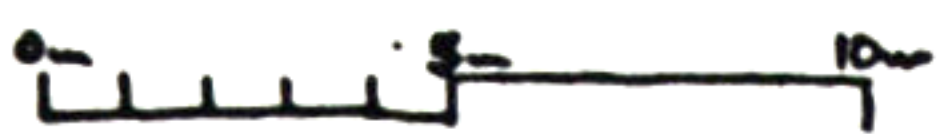
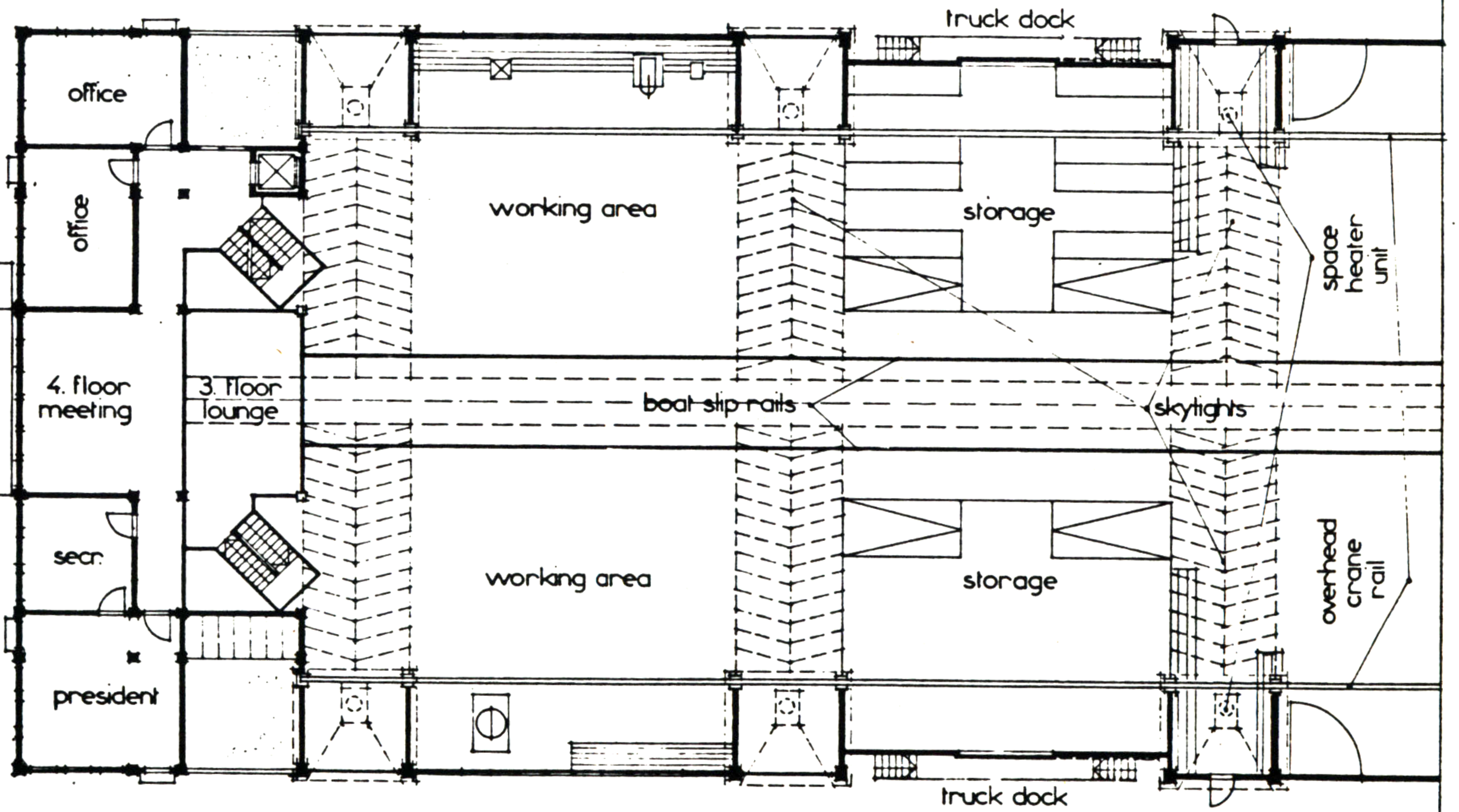
BACK

Carsten J. Schmunk

# 43. SHIP REPAIR



pier elevation  
floorplan



Carsten J. Schmunk