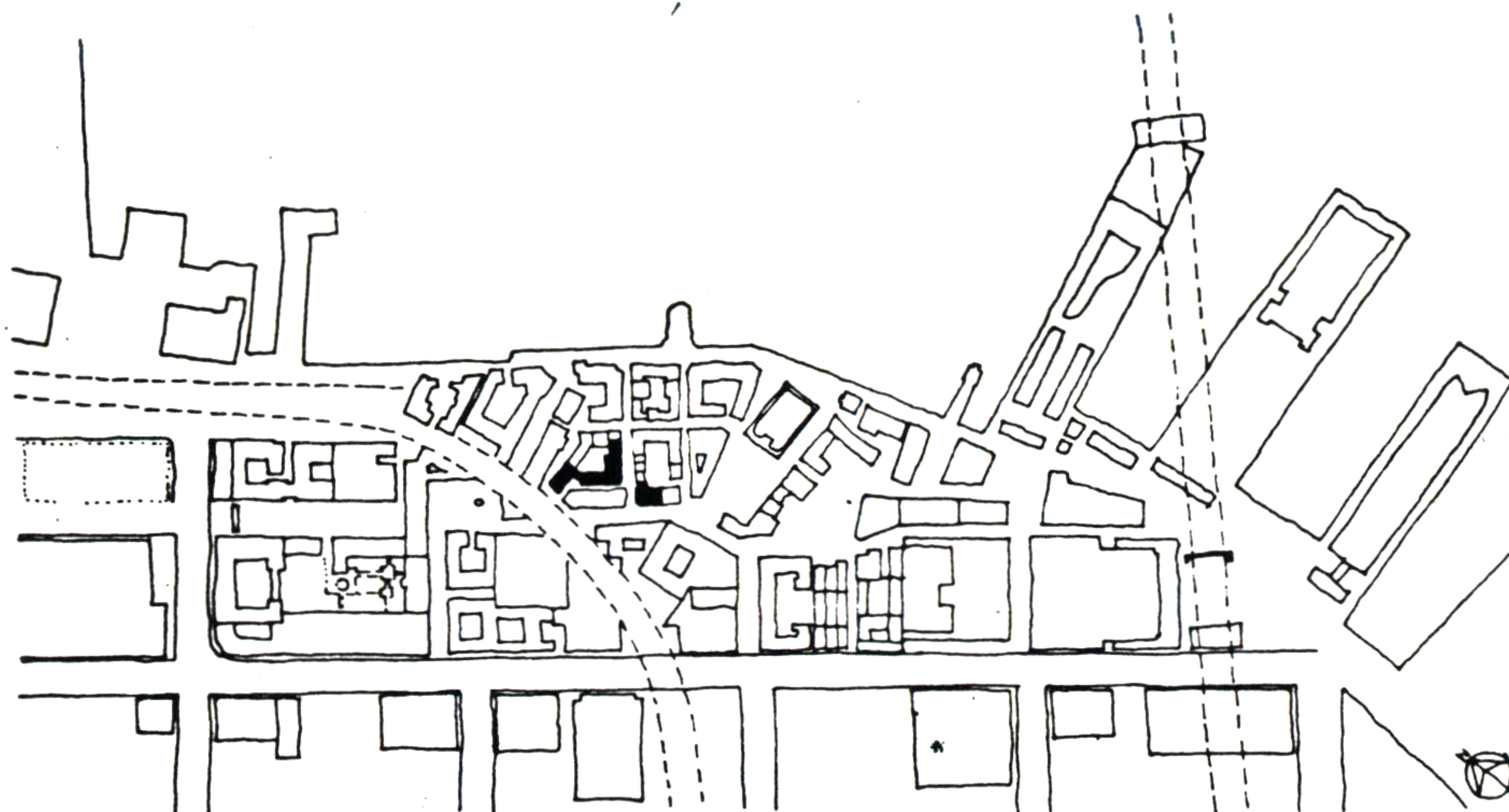


78. APARTMENTS



78 APARTMENTS

THIS PROJECT IS A COHERENT APPROACH TO THE YET UNBUILT AREA IN THE "GRID."
IT CONSISTS BASICALLY OF THREE BUILDINGS.

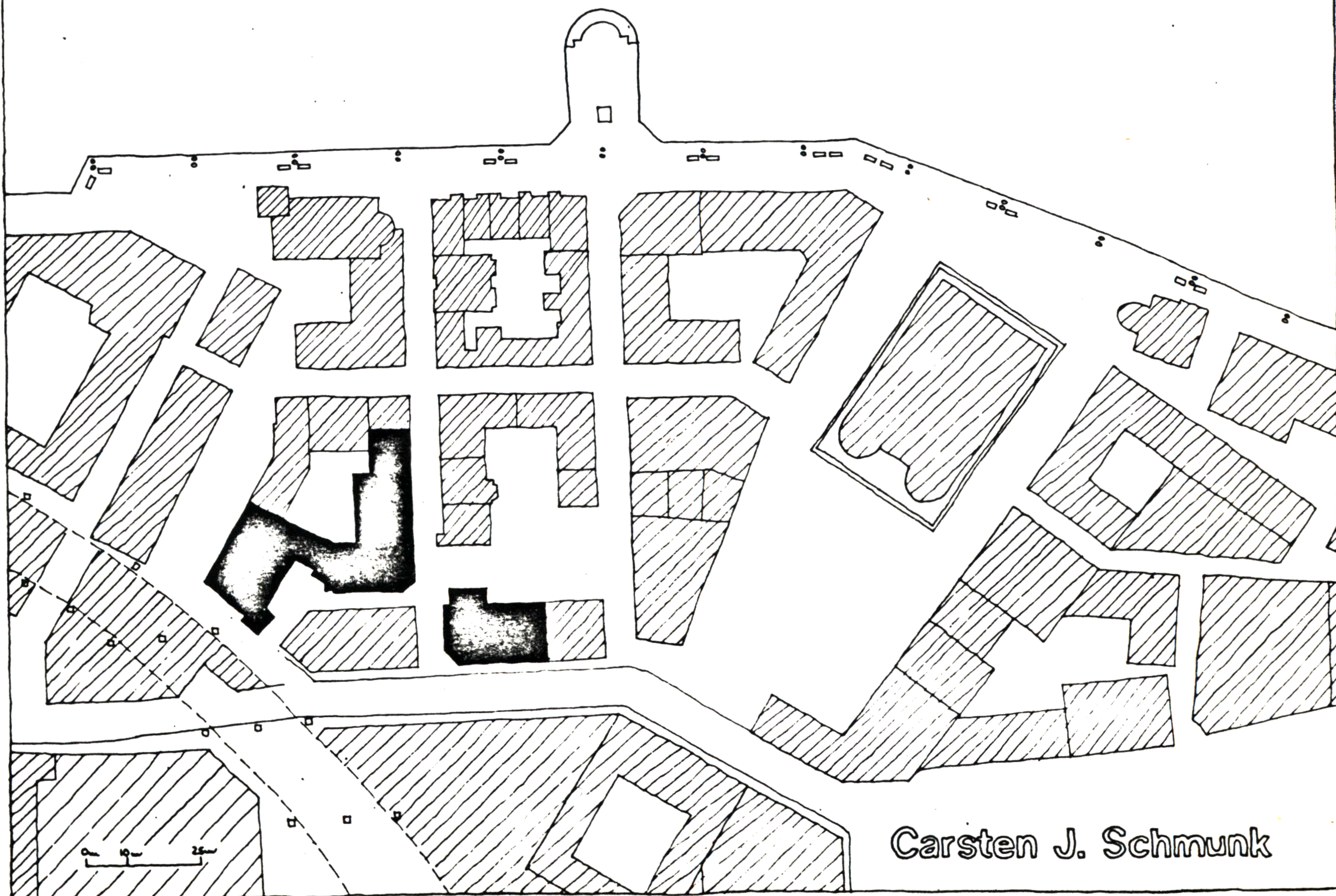
ONE ON THE STREET BETWEEN THE POST OFFICE AND THE DOCTOR'S OFFICES.

IT HAS AN APPLIANCE STORE ON THE GROUND FLOOR AND EIGHT APARTMENTS ABOVE
(2 AND 3 BEDROOM).

THE SECOND STRUCTURE FRONTS THE PATH COMING UP FROM THE WATER, AND LEAVES
A LANE, PARALLEL TO THE STREET, BEHIND THE DOCTOR'S OFFICES. IT IS 4 TO 5 STORIES
HIGH AND CONTAINS 1 AND 2 BEDROOM APARTMENTS, AND HAS A "SALON DE BEAUTE" AT THE
CORNER.

THE THIRD BUILDING COMPLETES THE PATH BEHIND THE ROWHOUSES, BEGINNING FROM
THE BIRTH CENTER AND CONNECTS TO THE SECOND BUILDING WITH A BRIDGE.

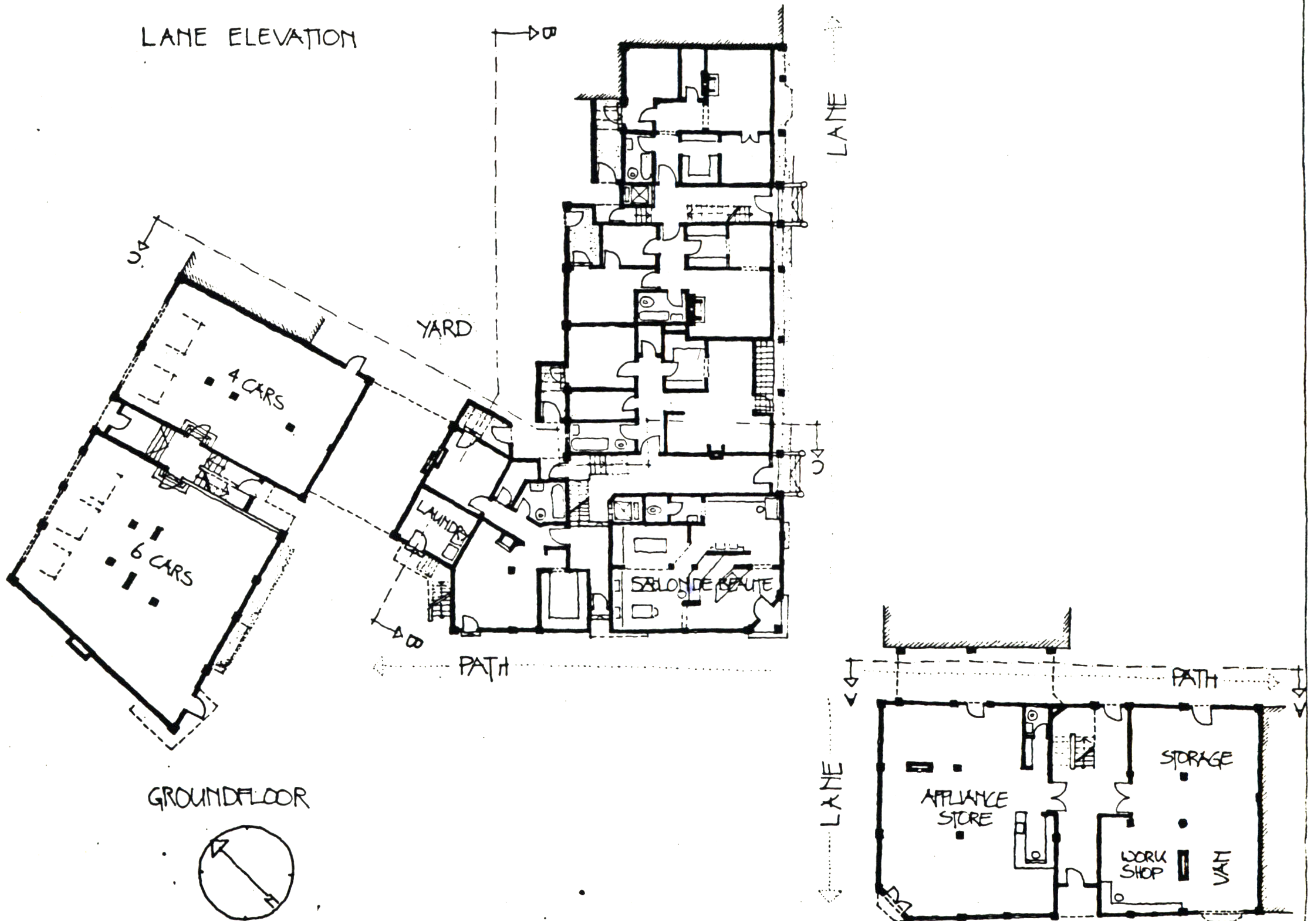
THUS SHAPING AN INNER YARD WHICH IS LOSELY CONNECTED TO THE OPEN SPACE IN
THE NOOK WHICH THESE TWO BUILDINGS FORM.



78. APARTMENTS



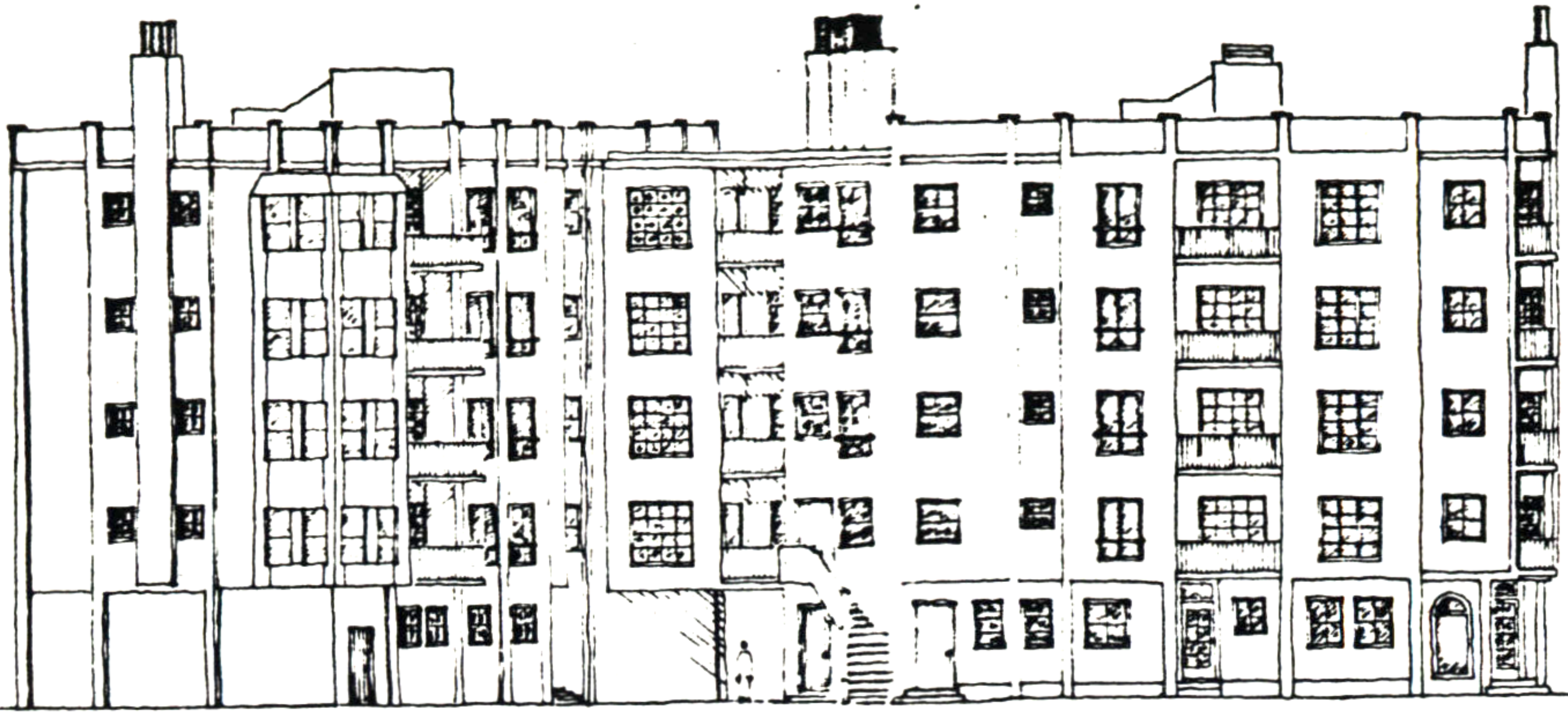
LANE ELEVATION



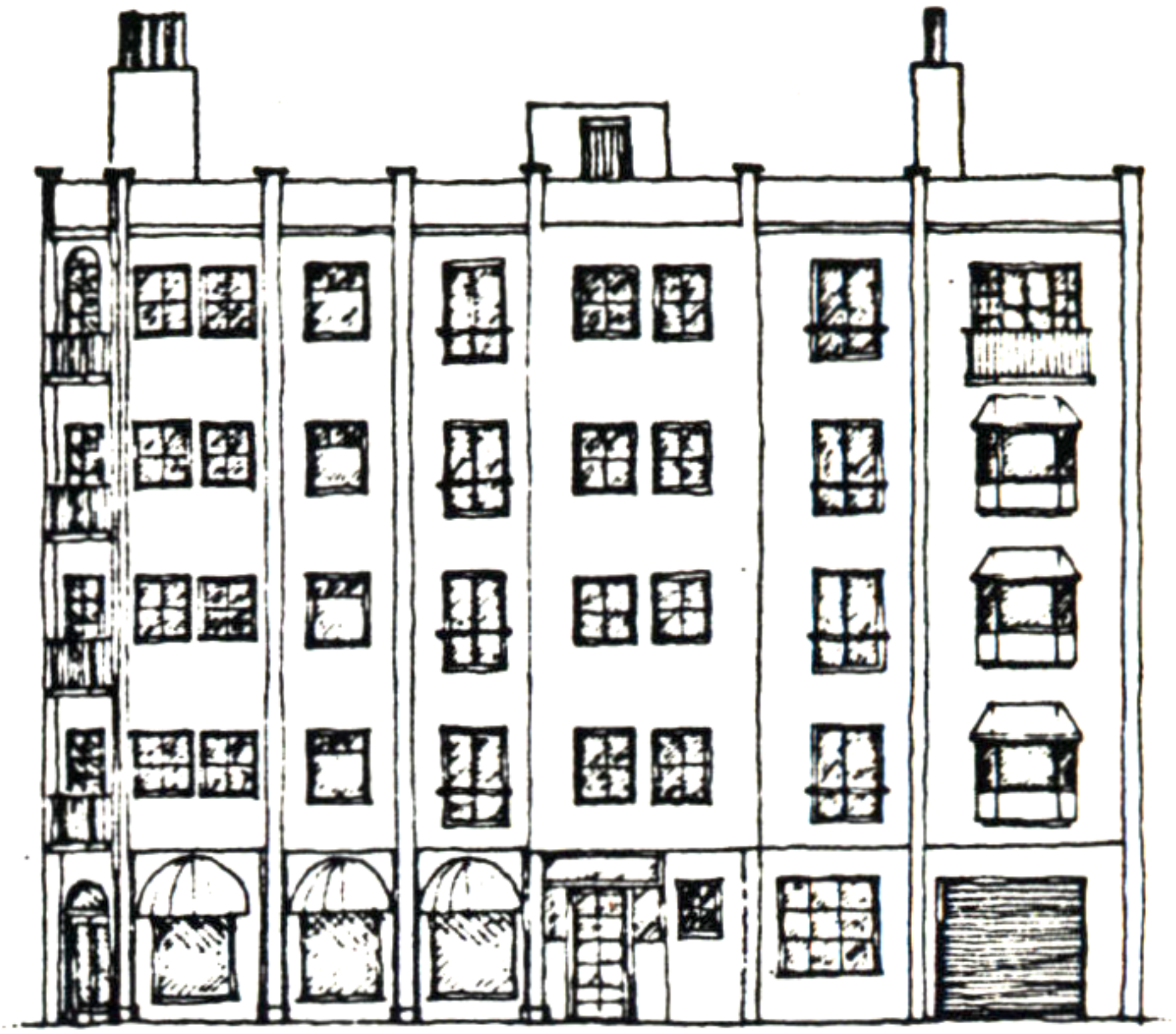
GROUND FLOOR

Carsten J. Schmunk

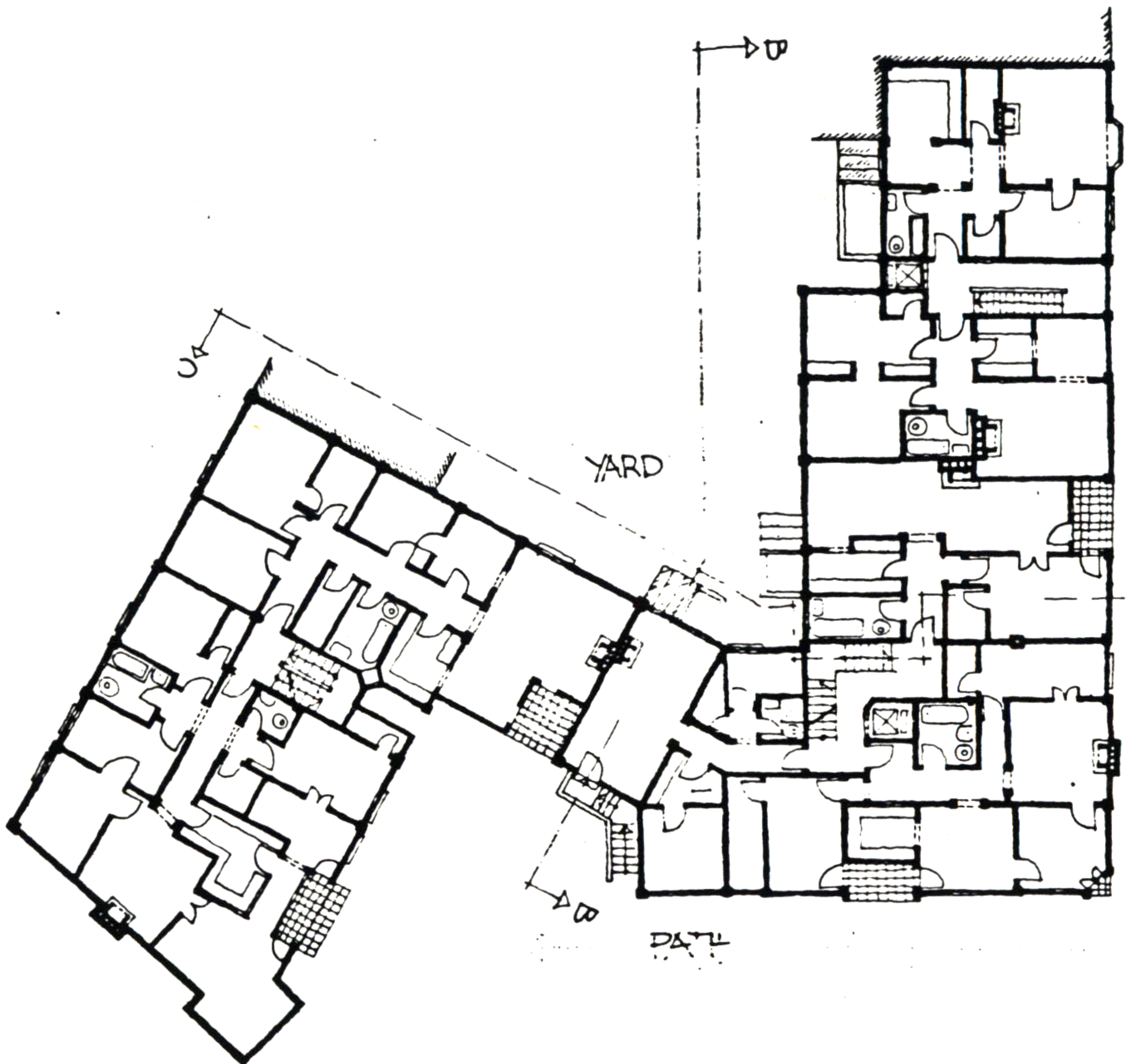
78. APARTMENTS



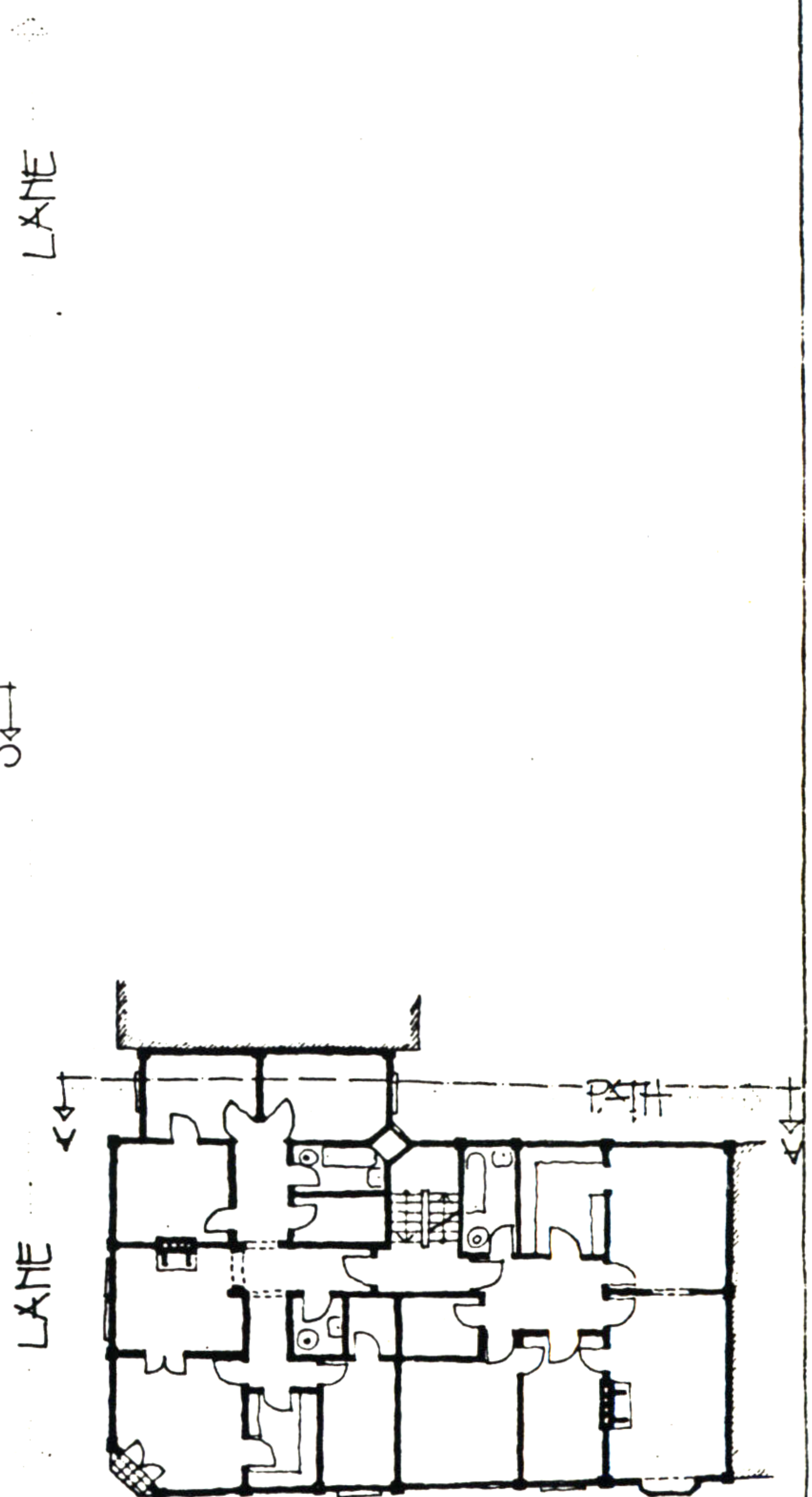
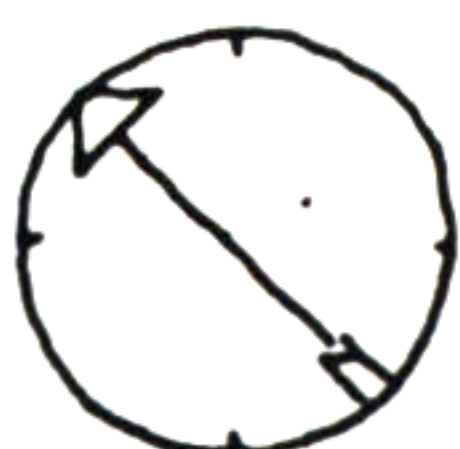
LANE ELEVATION



STREET ELEVATION



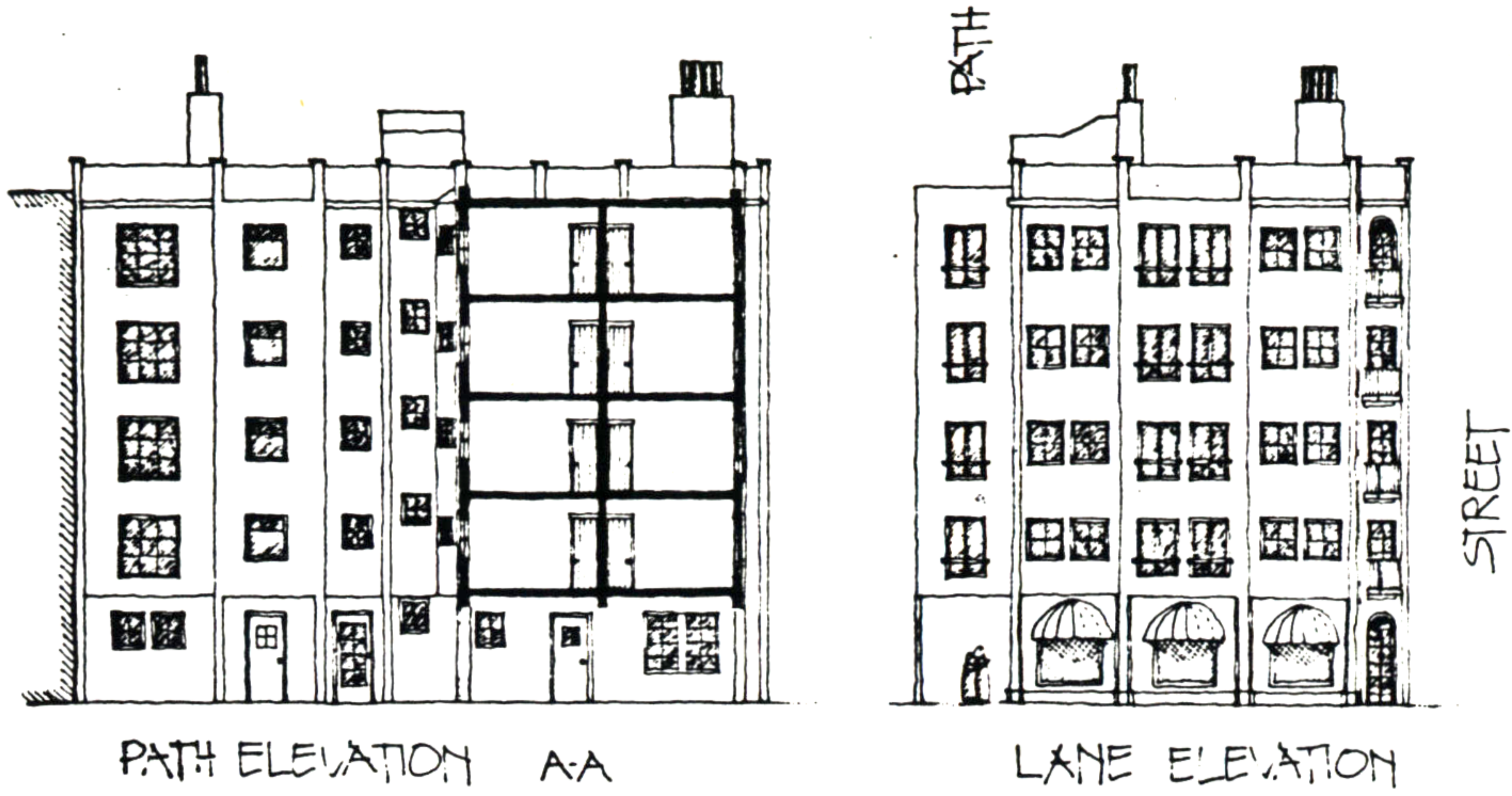
2nd to 5th FLOOR



STREET

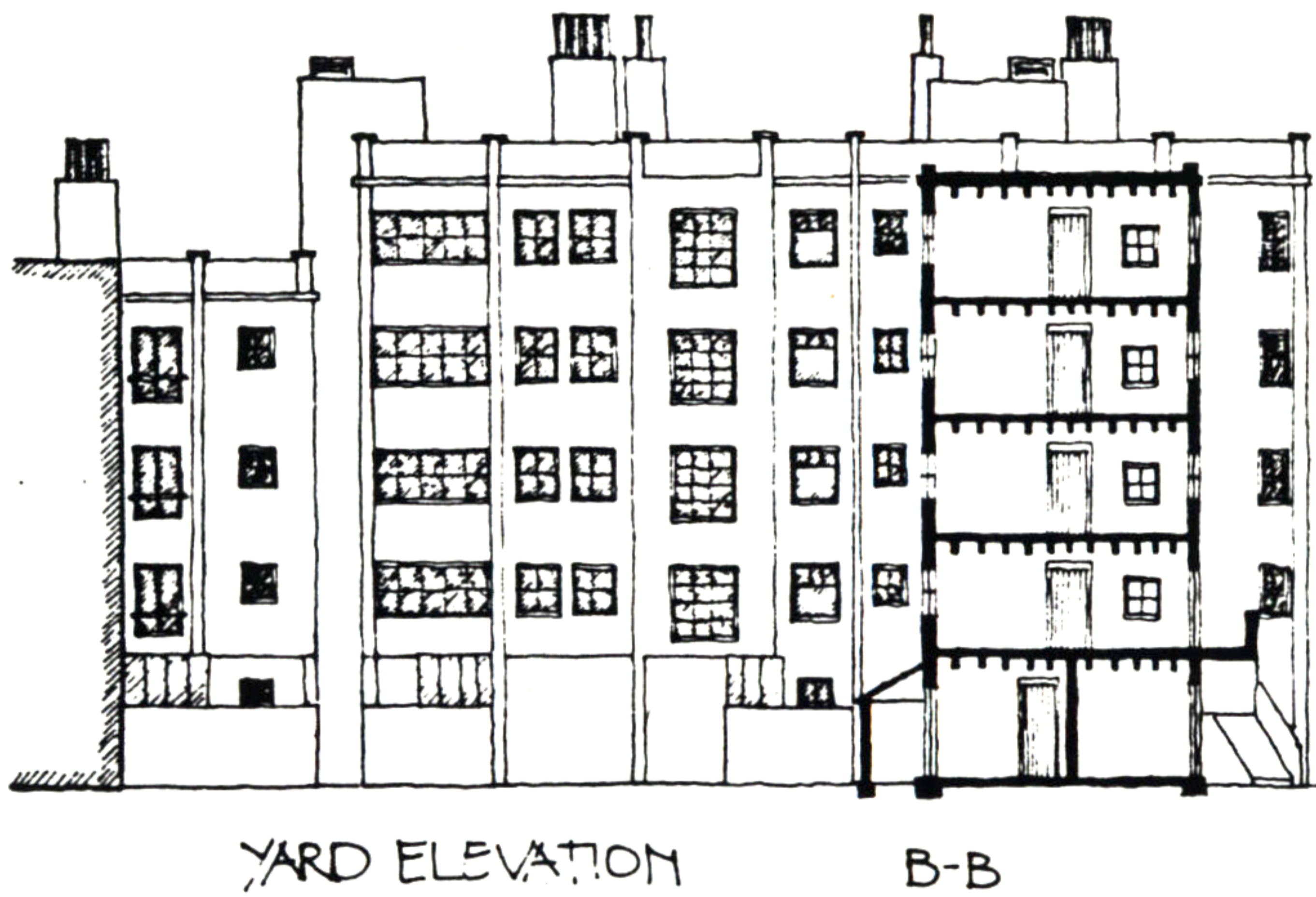
Carsten J. Schmunk

78. APARTMENTS



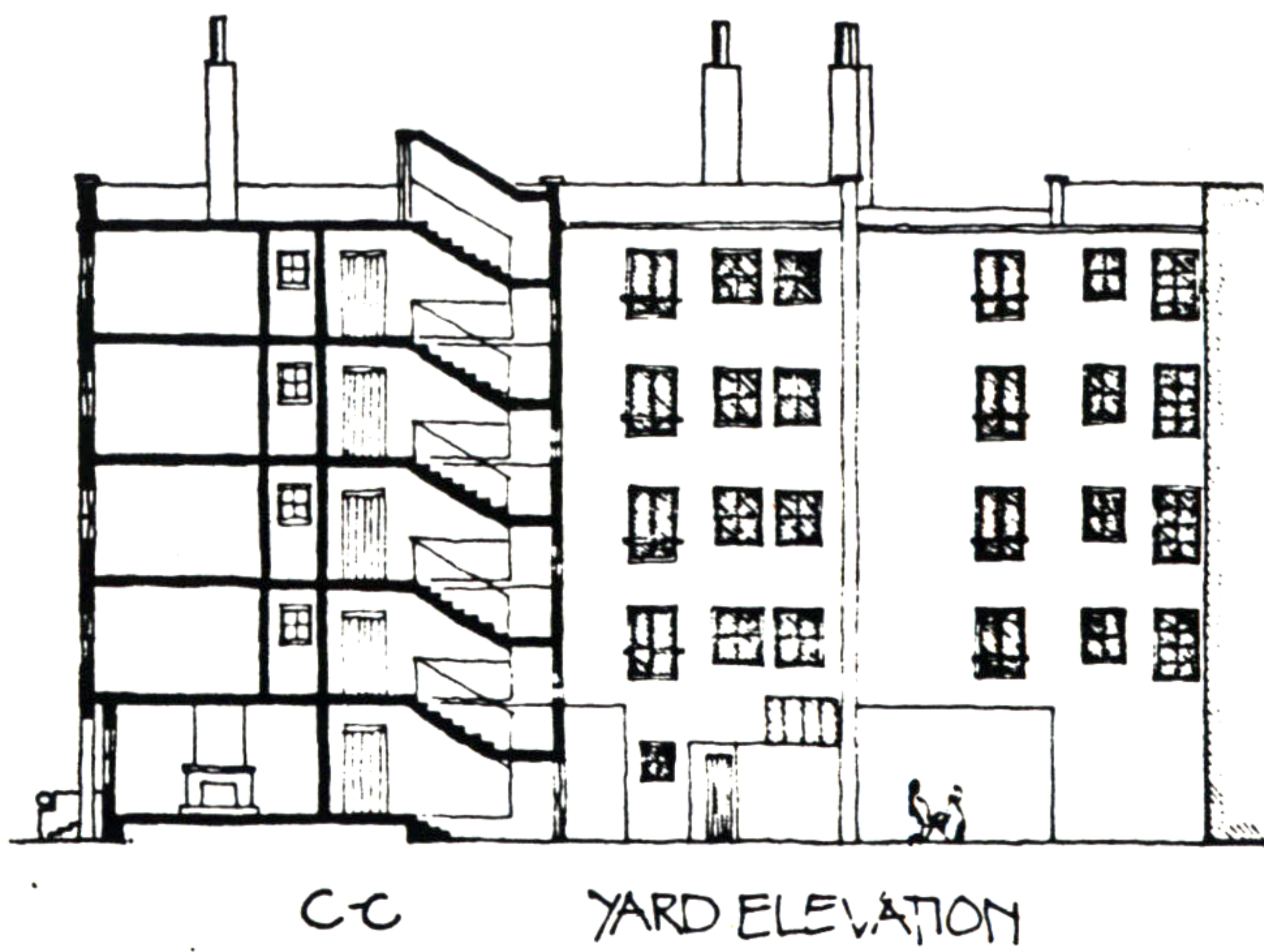
PATH ELEVATION A-A

LANE ELEVATION



YARD ELEVATION

B-B



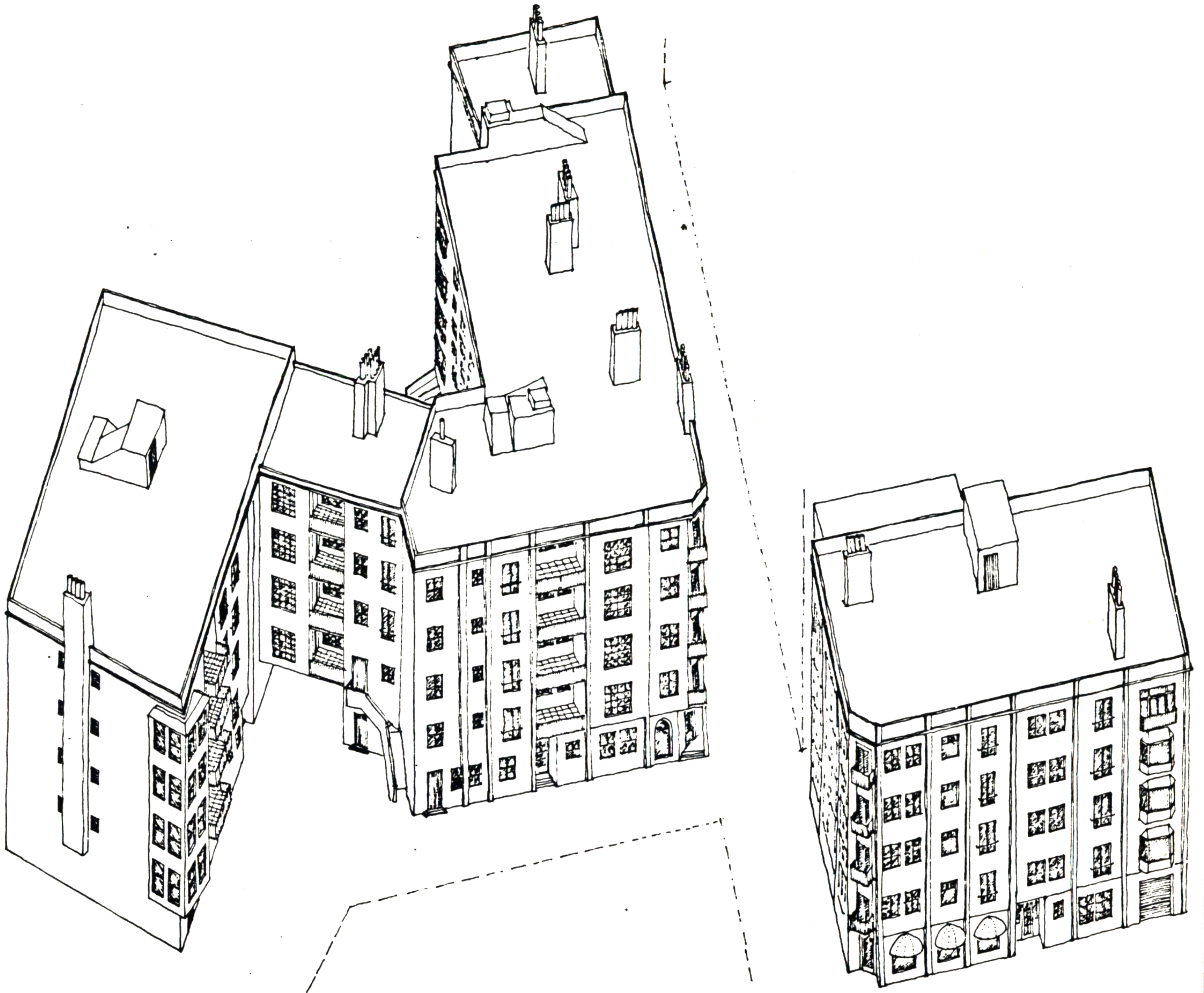
CC

YARD ELEVATION



Carsten J. Schmunk

78. APARTMENTS



Carsten J. Schmunk

APARTMENTS



0 .25 1