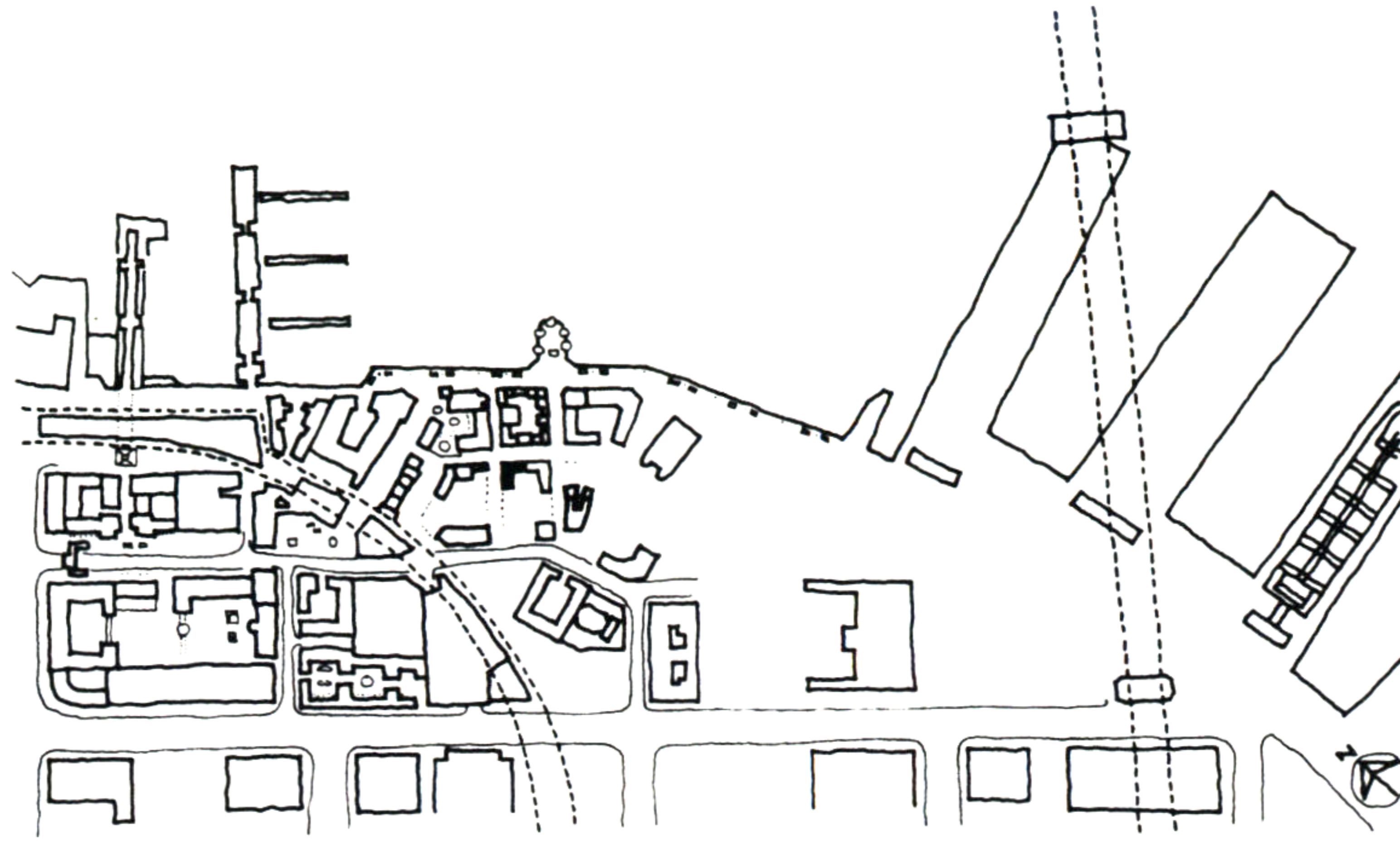
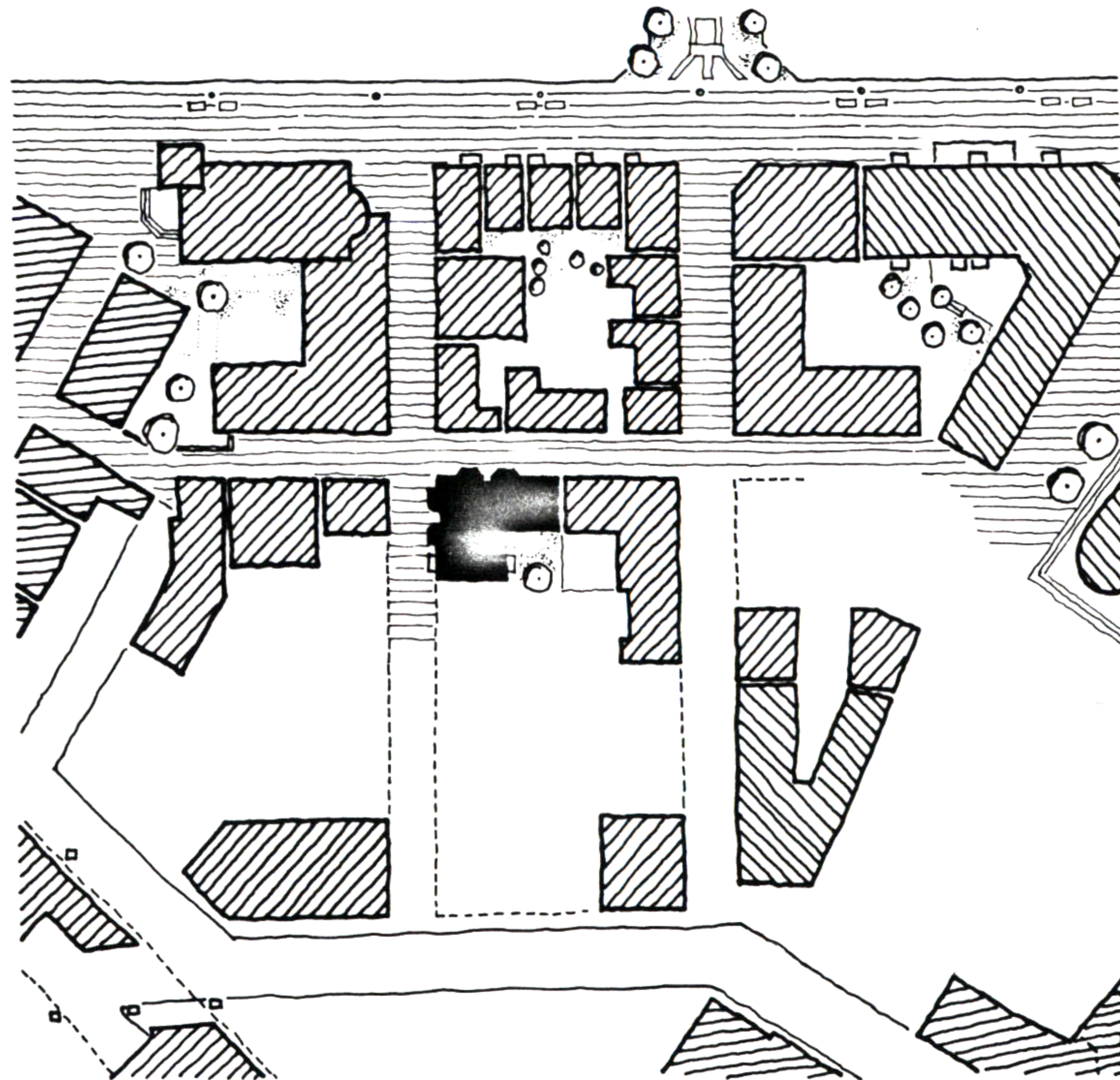


46. HOUSING FOR THE ELDERLY



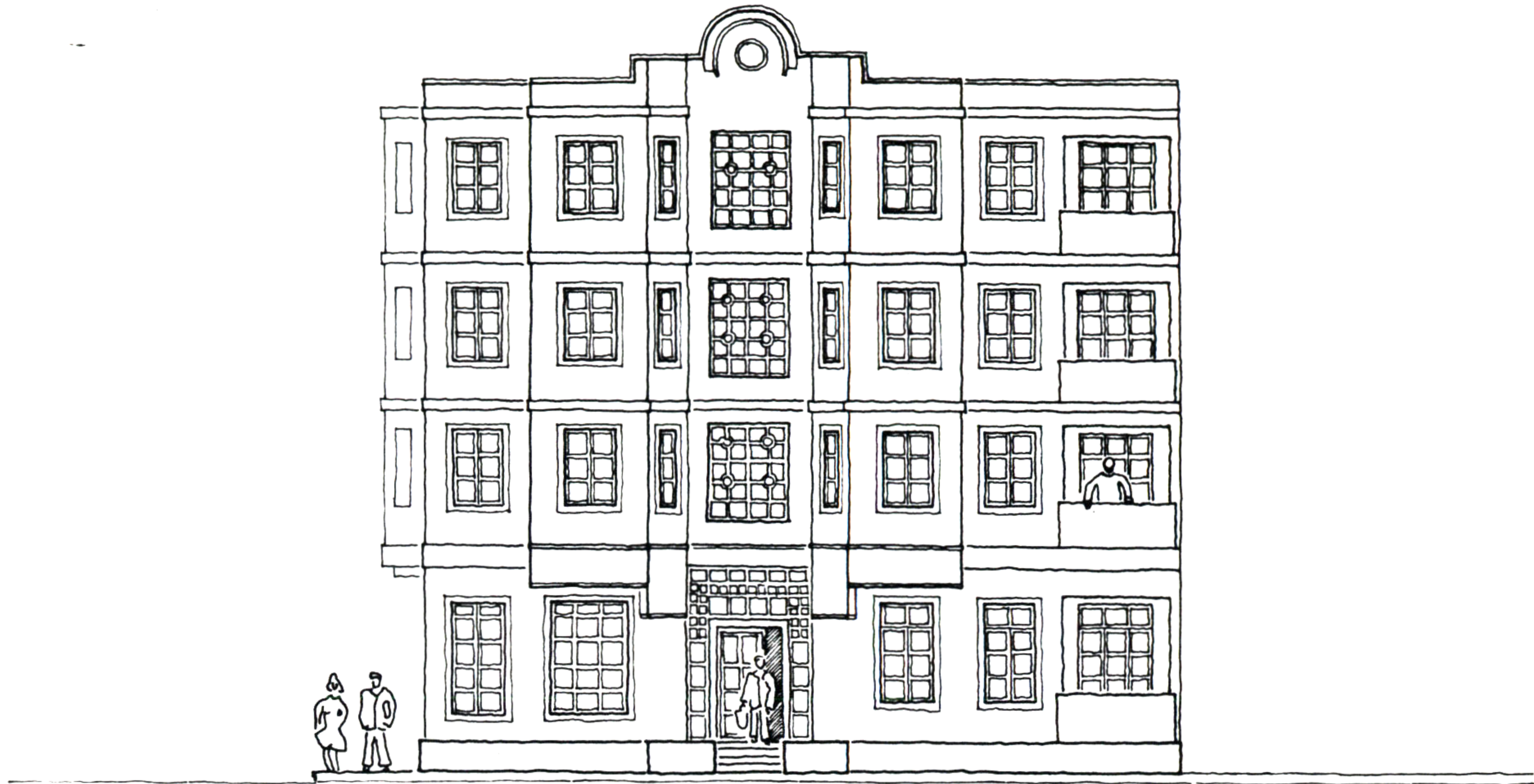
I IMAGINE AN ORDINARY APARTMENT HOUSE CATICORNER TO THE CHURCH, WHICH HAS SOME ADDITIONAL FUNCTIONS FOR THE ELDERLY LIKE A MEETING PLACE ON THE GROUND FLOOR. THE SIZE OF THE BUILDING IS REASONABLY SMALL, SO THAT THE ELDERLY DO NOT BECOME ISOLATED. I SEE HOUSING FOR THE ELDERLY, BECAUSE OF THE NICE AND QUIET AREA, WHICH SUGGESTS THIS TYPE OF HOUSING. IT IS ENVISAGED TO HAVE A MIXTURE OF ONE-PERSON APARTMENTS AND APARTMENTS FOR COUPLES. THE APARTMENTS FOR SINGLE PERSONS WILL BE ESPECIALLY CHARACTERIZED BY A MAIN SPACE FOR LIVING WITH ADDITIONAL NICHES AND ALCOVES. A COMMON MEETING ROOM WILL BE LOCATED ON THE GROUND FLOOR.



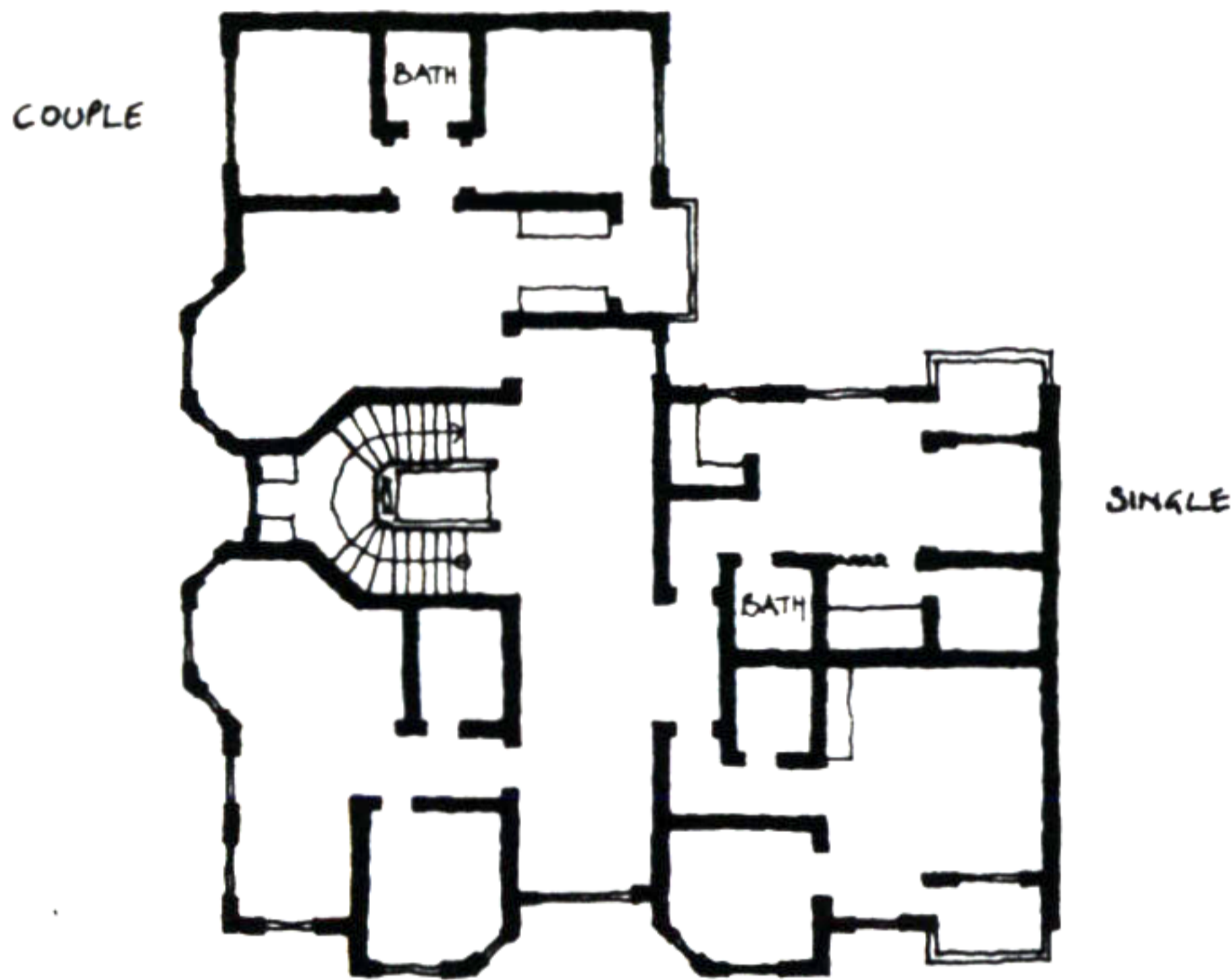
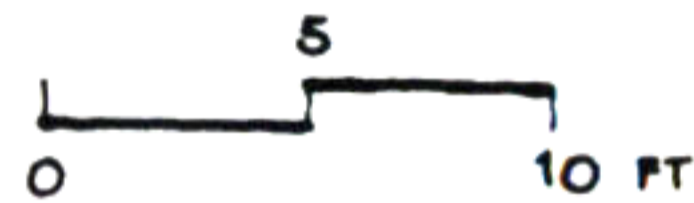
SITE PLAN
0 5 50 100 FT

Hajo Neis

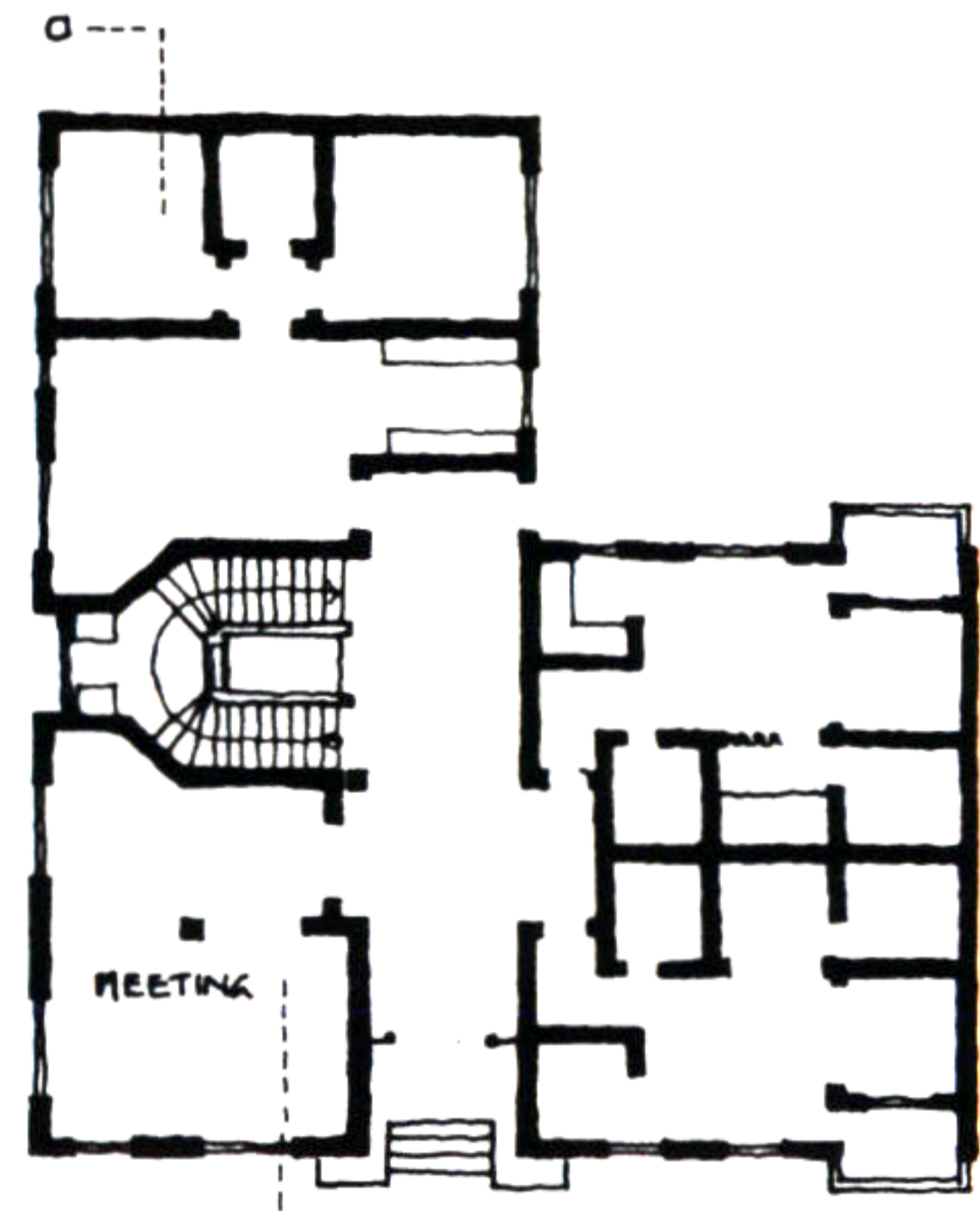
46. HOUSING FOR THE ELDERLY



NORTH - WEST ELEVATION



SECOND FLOOR



GROUND FLOOR



SECTION a - a

