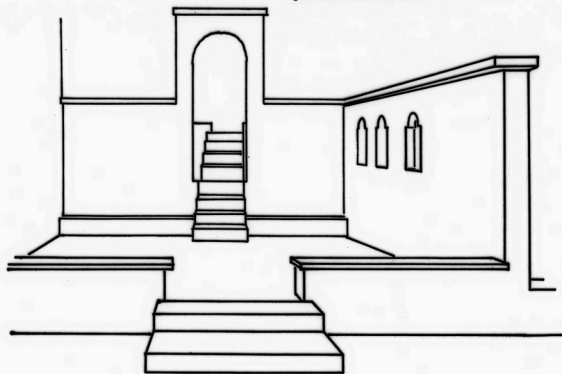
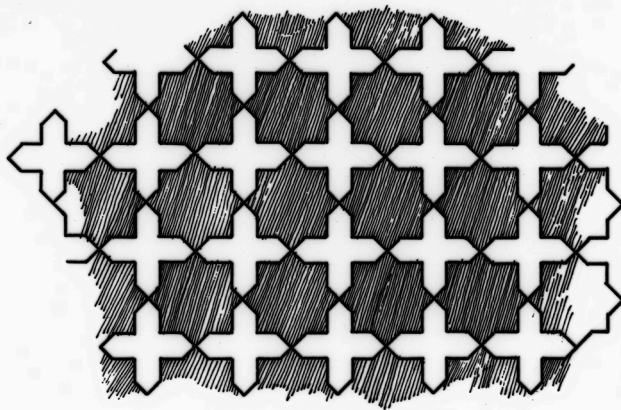


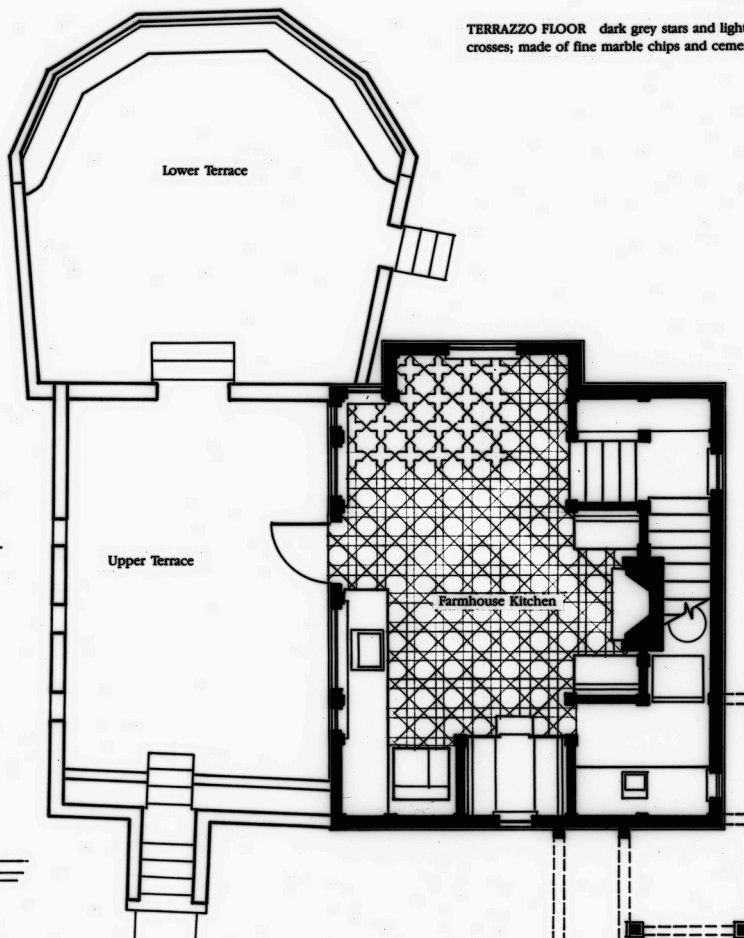
poured concrete arch



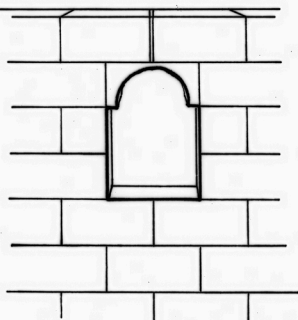
UPPER TERRACE



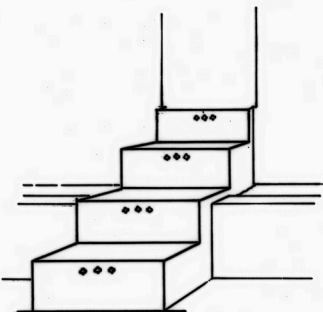
TERRAZZO FLOOR dark grey stars and light green crosses; made of fine marble chips and cement.



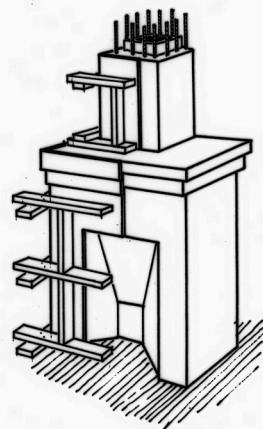
GROUND FLOOR PLAN



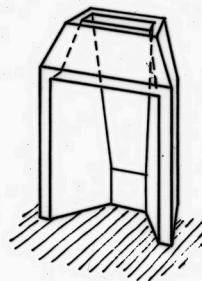
ARCH poured within block wall over styrofoam form.



STAIR ORNAMENTS Shapes created with foam, plastered later.



COUNT RUMFORD FIREPLACE standard concrete poured around firebox and tile flue



FIREBOX fireproof concrete poured in a plywood form